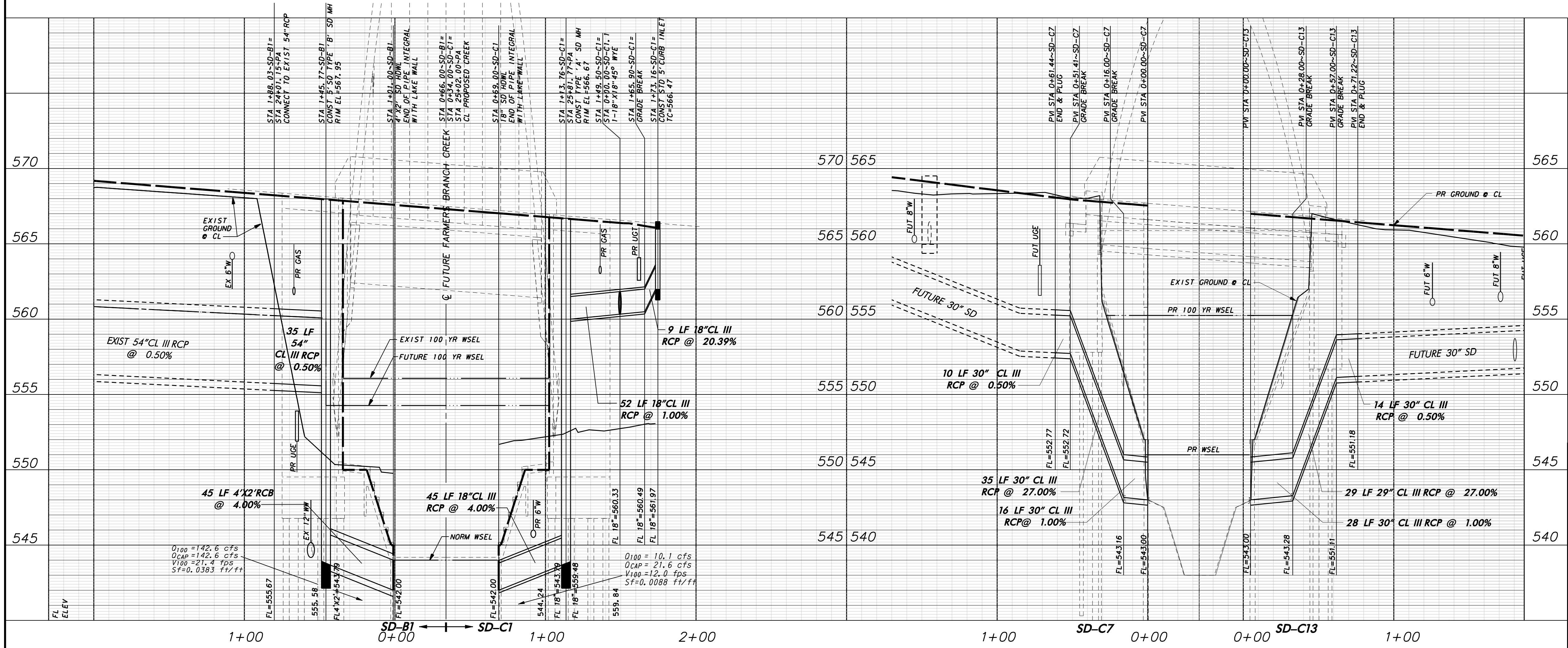
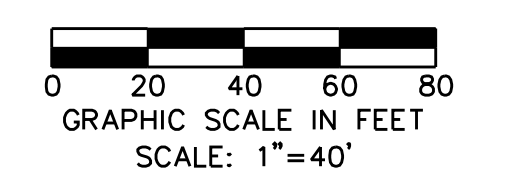


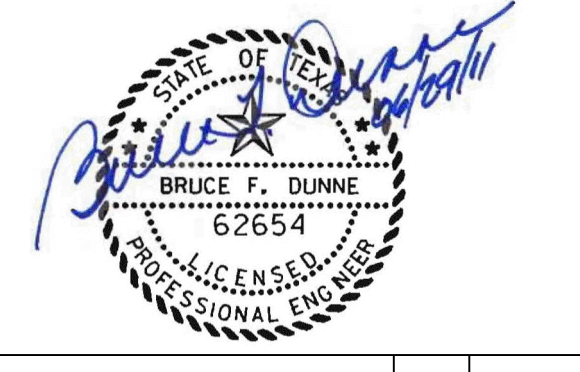
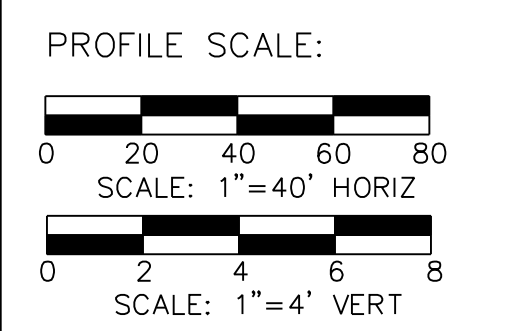
BM #1 REF. ELEVATION = 559.47
 SQUARE CUT IN TOP OF CURB, SOUTH MEDIAN
 END NOSE, MARSH LANE
 1127' NORTH OF VITRUVIAN WAY.

BM #2 REF. ELEVATION = 547.84
 SQUARE CUT IN TOP OF CURB, NORTH MEDIAN
 END NOSE, AT INTERSECTION OF
 VITRUVIAN WAY AND MARSH LANE.



WARNING

CONTRACTOR IS TO CONTACT TEXAS ONE-CALL SYSTEM (1-800-245-4545) OR OTHER UTILITY LOCATING SERVICES AT LEAST 48 HOURS PRIOR TO CONSTRUCTION ACTIVITIES. ICON CONSULTING ENGINEERS, INC. IS NOT RESPONSIBLE FOR KNOWING ALL EXISTING UTILITIES IN THE PROJECT AREA NOR FOR DEPENDING ON THE EXACT LOCATIONS OF UTILITIES ON THESE DRAWINGS.



NO.	REVISION	BY	DATE

Addison! TOWN OF ADDISON
 DALLAS COUNTY, TEXAS

PARK AND STREETSCAPE IMPROVEMENTS
 VITRUVIAN PARK

**STORM DRAIN PLAN & PROFILE-PA & BL
 LINES B1 & C1 AND C7 & C13**

icon Consulting Engineers, Inc. 250 W. Southlake Blvd., Suite 117
 Civil Engineers - Designers - Planners Southlake, Tx 76092 (817) 552-6210

PROJECT	DESIGN	DRAWN	DATE	FILE	SHEET
5029-01	ICE	ICE	APR 26, 2010	PW# 2009-04	C404

PARK AND STREETSCAPE IMPROVEMENTS - VITRUVIAN PARK