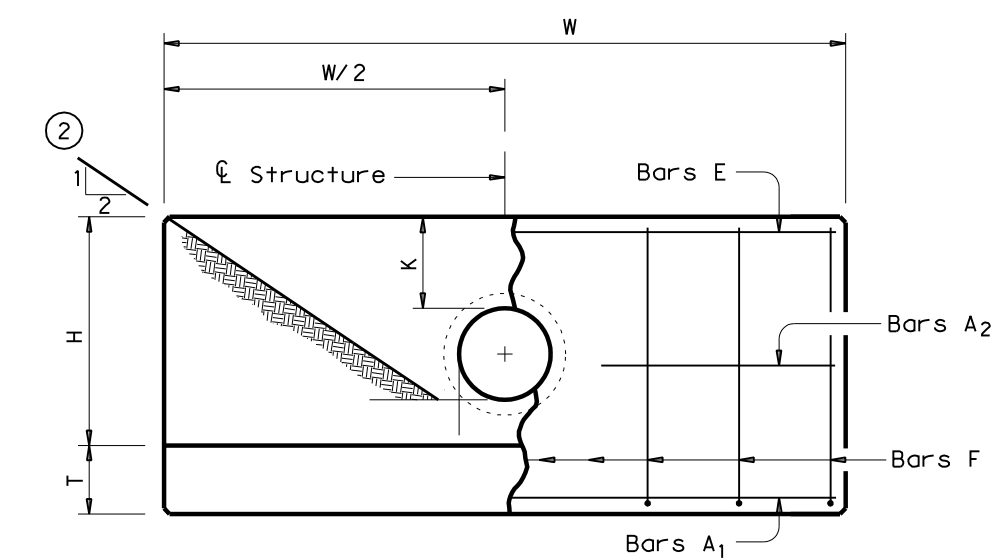


LOAD RATING HEAVY DUTY	COATING DIPPED	ESTIMATED WEIGHT COVER: 193 LBS FRAME: 151 LBS	MATERIAL SPECIFICATION COVER - GRAY IRON ASTM A48 CL35B FRAME - GRAY IRON ASTM A48 CL35B
---------------------------	-------------------	--	--

DESIGNATES MACHINE SURFACE

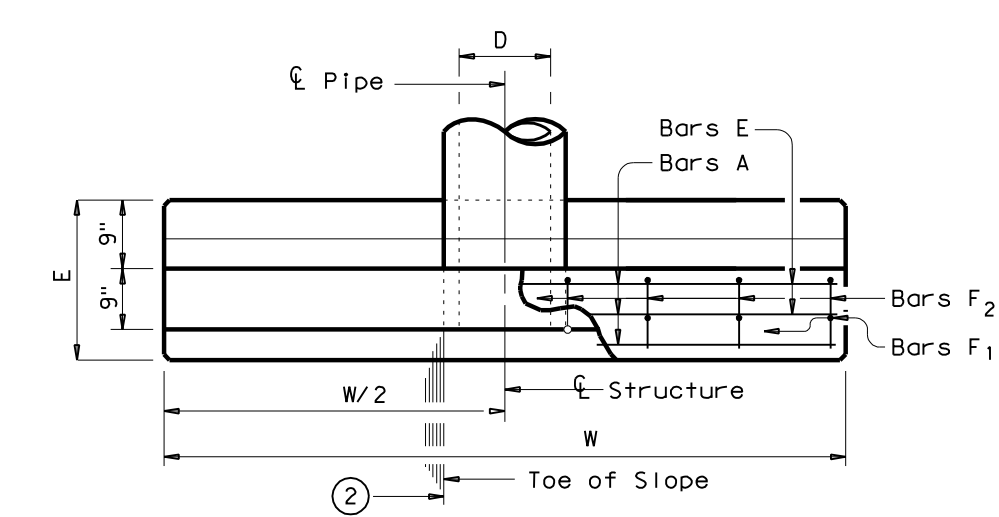
CAST IRON FRAME AND COVER



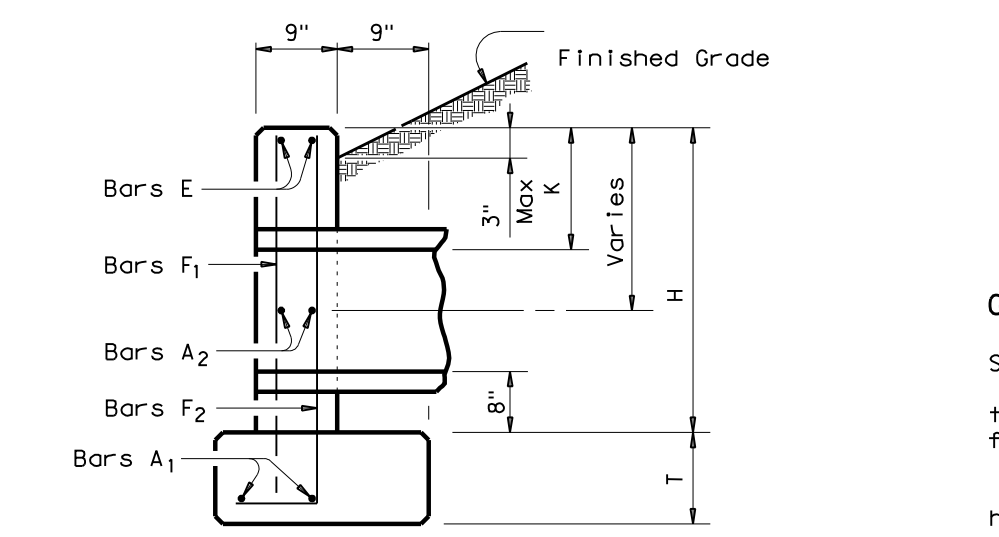
ELEVATION

PIPE DIA. (D)	W	K	H	T	E
12"	9'-0"	1'-0"	2'-8"	9"	1'-9"
15"	10'-3"	1'-0"	2'-11"	9"	1'-9"
18"	11'-6"	1'-0"	3'-2"	9"	1'-9"
21"	12'-9"	1'-0"	3'-5"	9"	2'-0"
24"	14'-0"	1'-0"	3'-8"	9"	2'-0"
30"	16'-6"	1'-0"	4'-2"	9"	2'-3"
36"	19'-0"	1'-0"	4'-8"	1'-0"	2'-6"
42"	21'-6"	1'-0"	5'-2"	1'-0"	2'-9"

TABLE OF CONSTANT DIMENSIONS



PLAN OF NON-SKEWED PIPE



SECTION

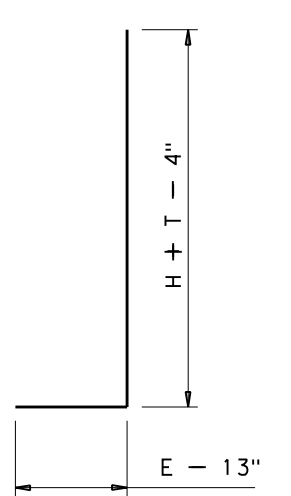
CONCRETE HEADWALL WITH PARALLEL WINGS FOR NON-SKEWED PIPE CULVERT

NOT TO SCALE

GENERAL NOTES:
 Designed according to current AASHTO Standard and Interim Specifications.
 Reinforcing steel shall be placed with the center of the outside layer of bars 2" from the surface of the concrete.
 All concrete shall be Class "C" and shall have a minimum compressive strength of 3600 psi.
 No bridge rails of any type may be mounted directly to these culvert headwalls.

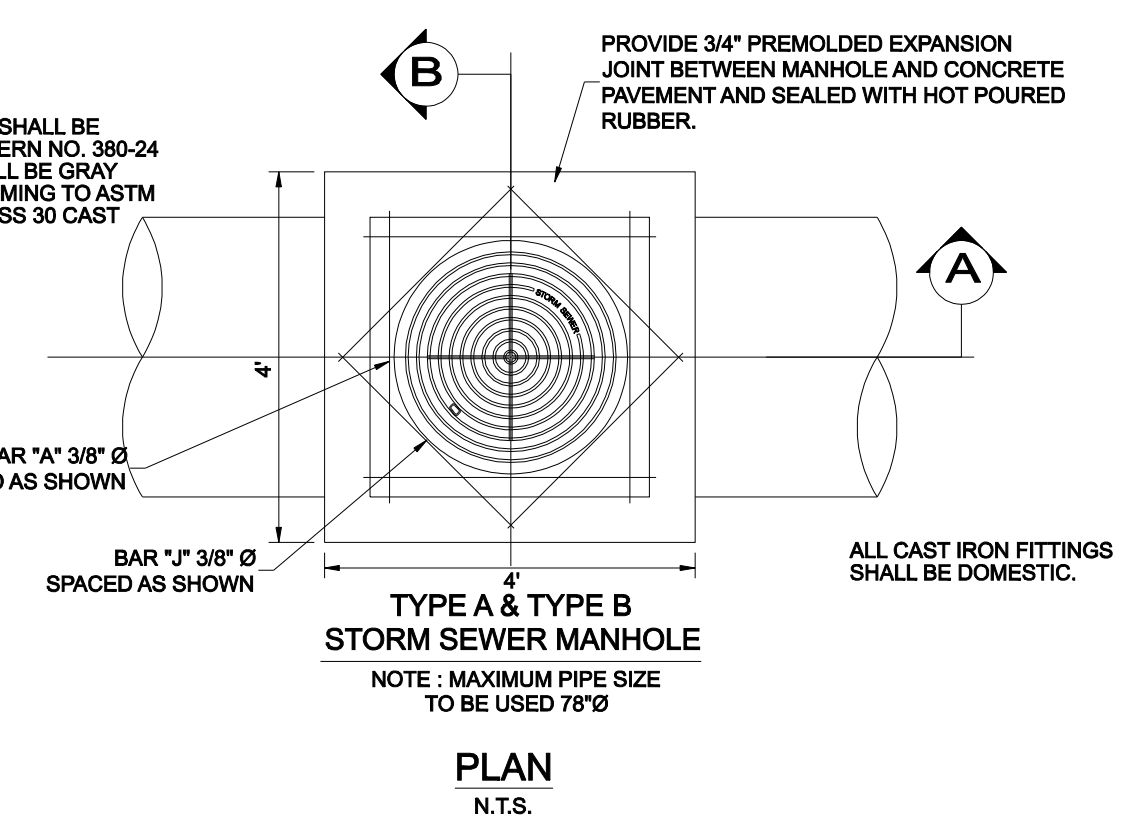
Bar	Size	Spa	No.
A1	# 5	~	2
A2	# 5	1'-6"	~
E	# 5	~	2
F	# 5	1'-0"	~

Quantities shown are for one structure end. (One headwall)



BARS F2

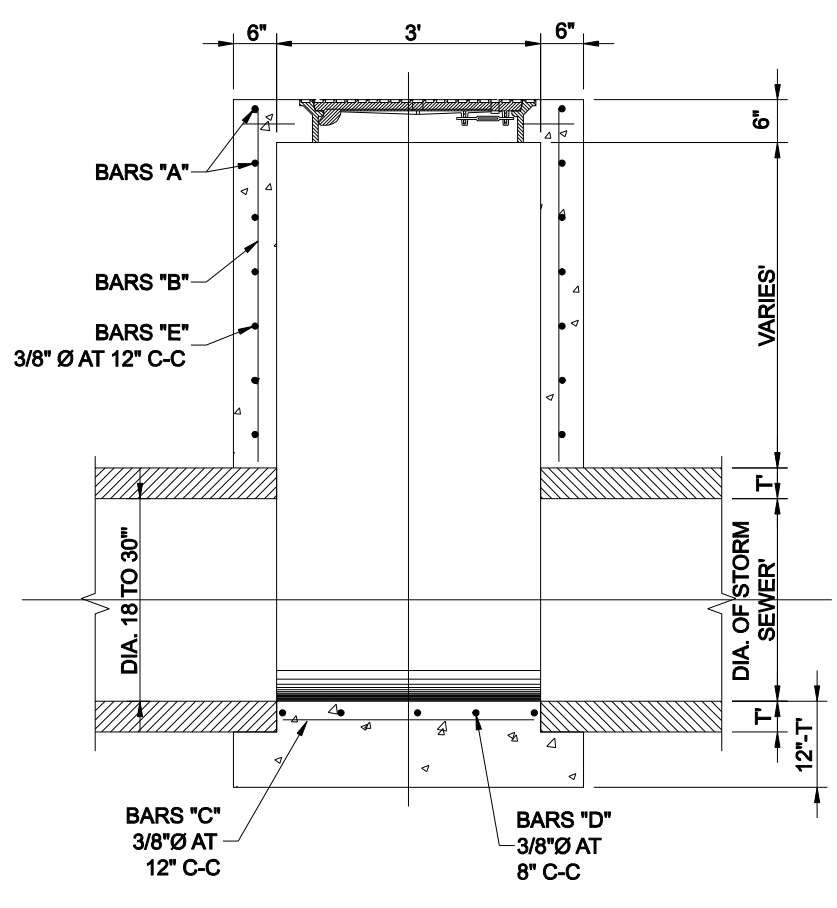
NOTE:
 FRAME AND COVER SHALL BE BASS & HAYES PATTERN NO. 380-24 OR EQUAL AND SHALL BE GRAY CAST IRON CONFORMING TO ASTM SPEC. A-48 FOR CLASS 30 CAST IRON.



TYPE A & TYPE B STORM SEWER MANHOLE

NOTE: MAXIMUM PIPE SIZE TO BE USED 78"

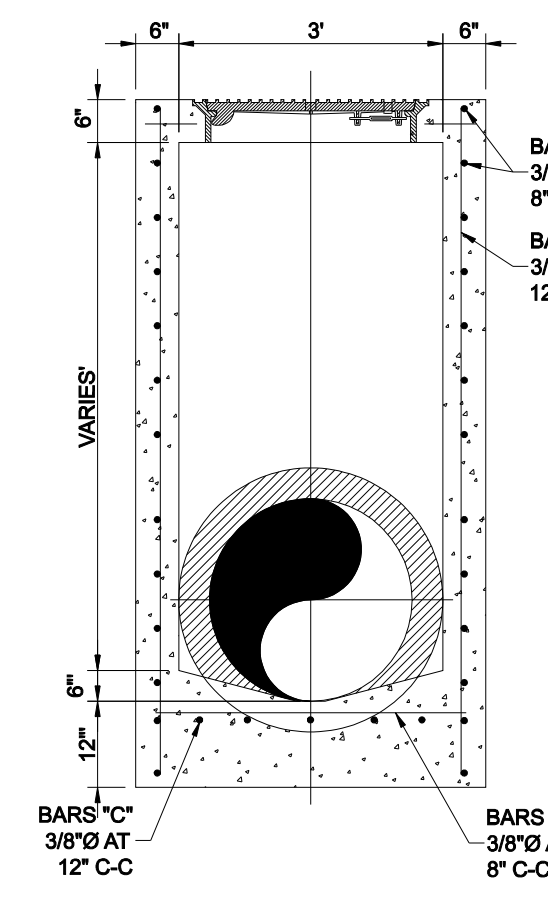
PLAN N.T.S.



SECTION A N.T.S.

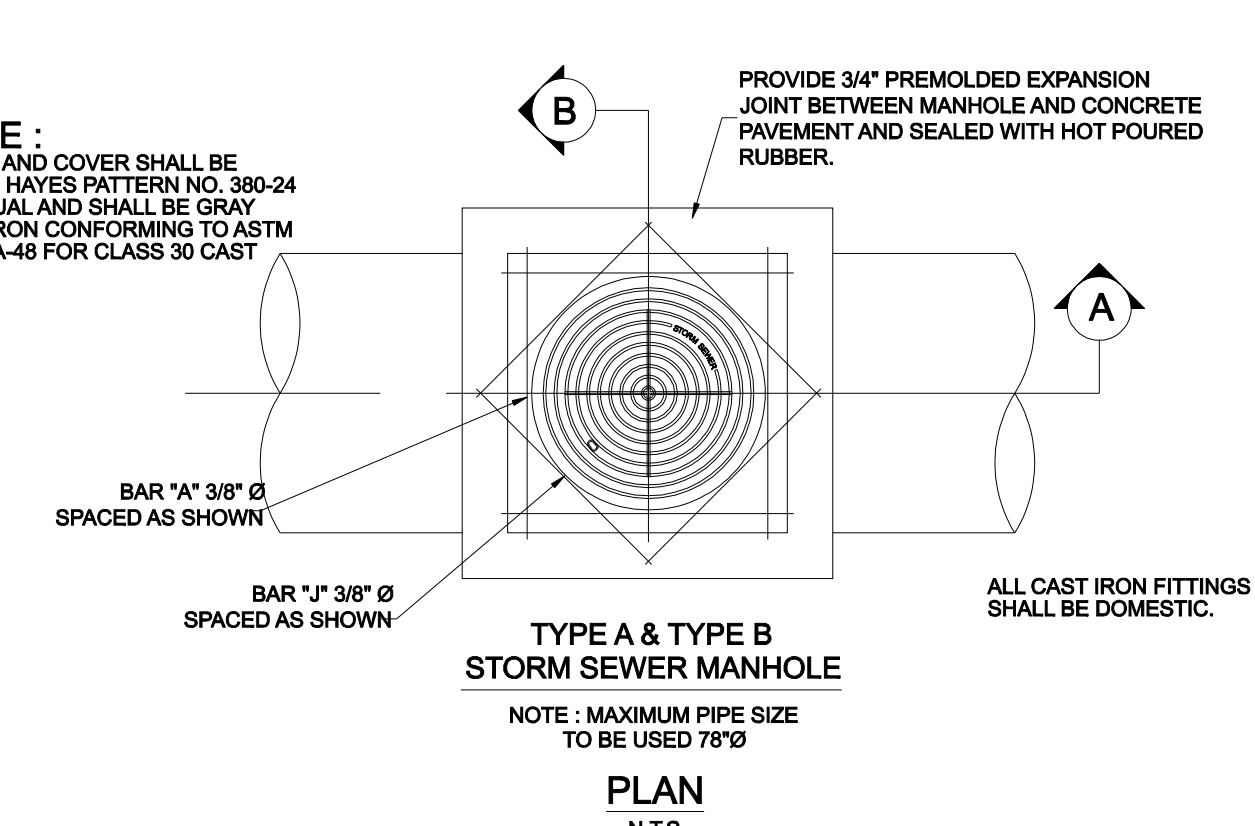
TYPE 'A' STORM DRAIN MANHOLE

N.T.S.



SECTION B N.T.S.

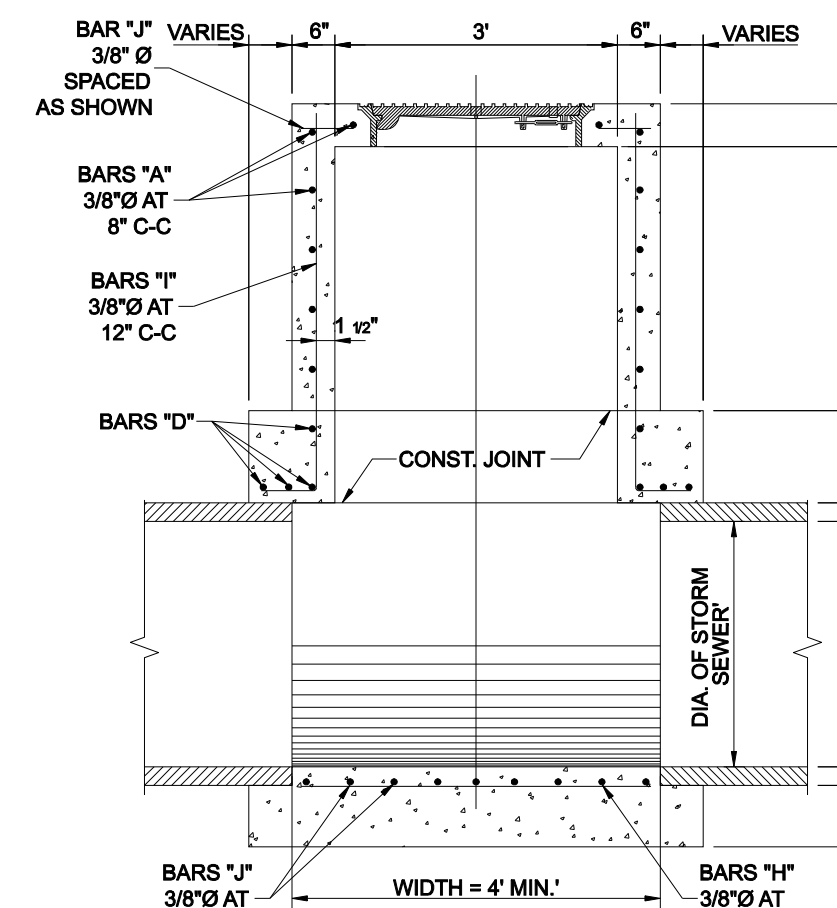
NOTE:
 FRAME AND COVER SHALL BE BASS & HAYES PATTERN NO. 380-24 OR EQUAL AND SHALL BE GRAY CAST IRON CONFORMING TO ASTM SPEC. A-48 FOR CLASS 30 CAST IRON.



TYPE A & TYPE B STORM SEWER MANHOLE

NOTE: MAXIMUM PIPE SIZE TO BE USED 78"

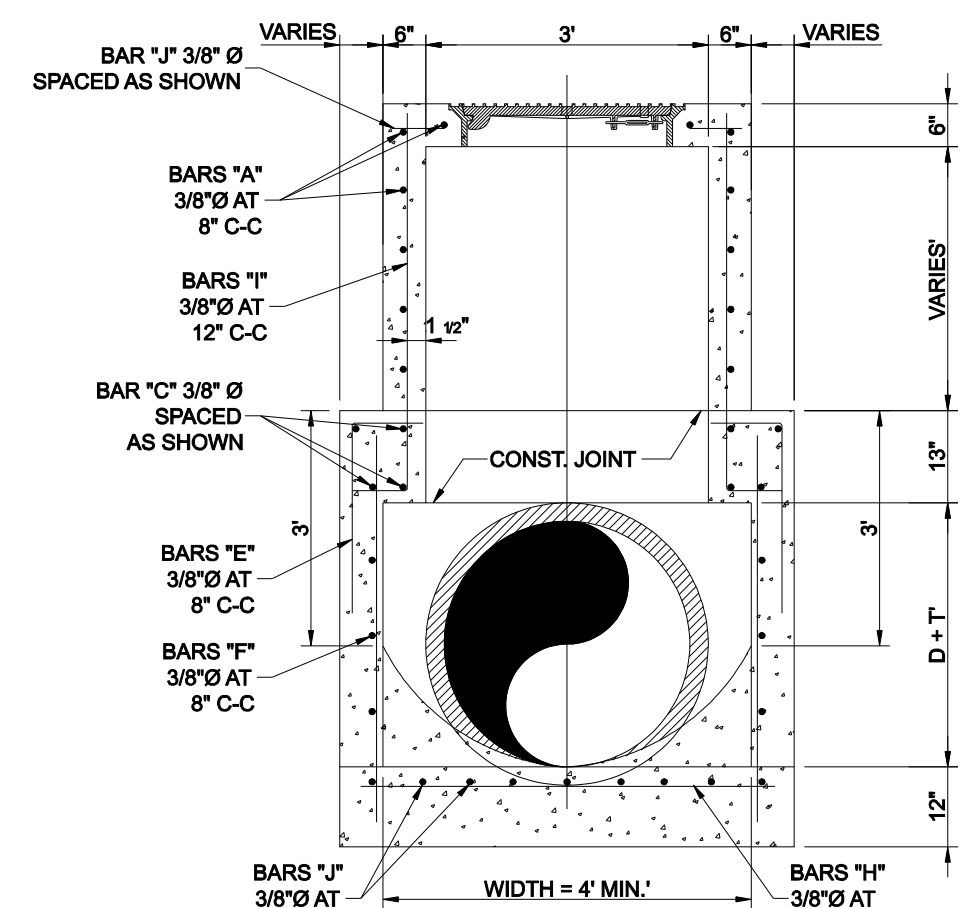
PLAN N.T.S.



SECTION A N.T.S.

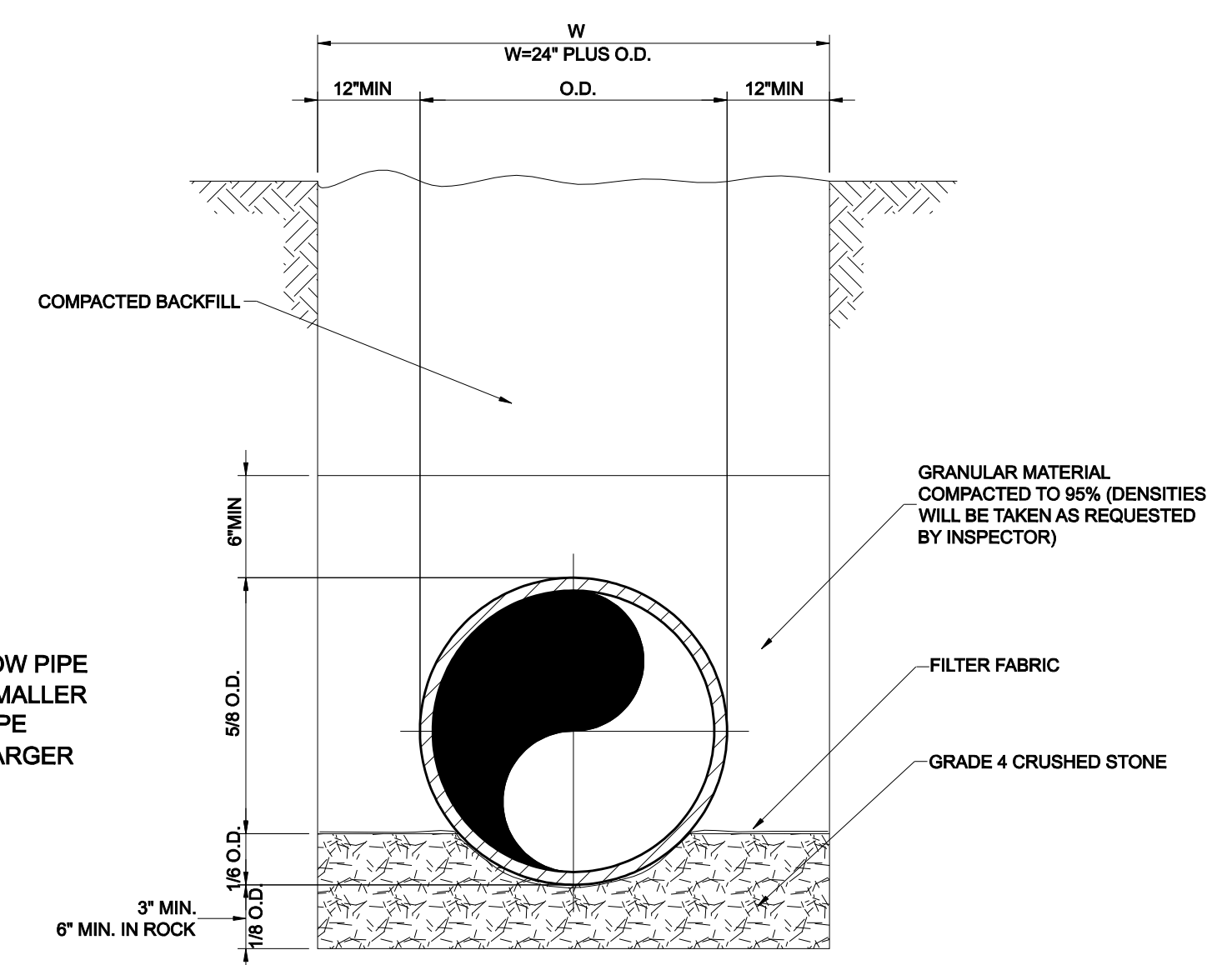
TYPE 'B' STORM DRAIN MANHOLE

N.T.S.



SECTION B N.T.S.

NOTE:
 DEPTH OF TRENCH BELOW PIPE 3" MIN. FOR 27" PIPE & SMALLER 4" MIN. FOR 30" TO 60" PIPE 6" MIN. FOR 66" PIPE & LARGER



RCP STORM SEWER PIPE BEDDING



NO.	REVISION	BY	DATE
-----	----------	----	------

ADDISON TOWN OF ADDISON DALLAS COUNTY, TEXAS
PARK AND STREETSCAPE IMPROVEMENTS VITRUVIAN PARK

STORM DRAIN DETAILS

icon Consulting Engineers, Inc.	250 W. Southlake Blvd., Suite 117
Civil Engineers - Designers - Planners	Southlake, Tx 76092 (817) 552-6210
PROJECT: 5029-01	DESIGN: ICE
DRAWN: ICE	DATE: APR 26, 2010
FILE: PW# 2009-04	SHEET: C405

PARK AND STREETSCAPE IMPROVEMENTS - VITRUVIAN PARK