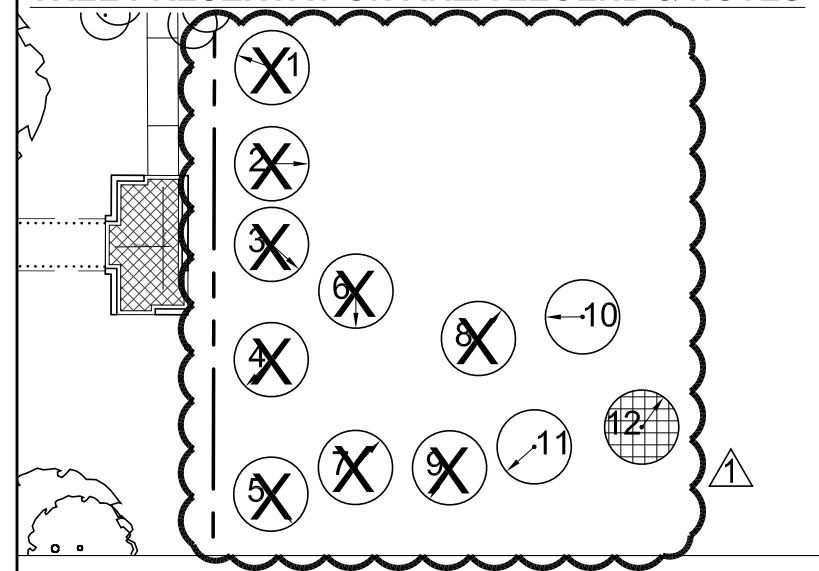


PLANT QUANTITIES

- (G) (1) Shumard Oak
Quercus shumardii
4" cal, B&B.
- (DD) (20) Oklahoma Redbud
Cercis canadensis 'Oklahoma'
3"-3 1/2" cal, 8' ht, B&B.

NOTE: ALL tree locations that are shown shall be staked by the Landscape Contractor and the locations of the stakes approved in writing by the town of Addison and Landscape Architect, prior to any tree planting.

TREE PRESERVATION AREA LEGEND & NOTES



1. Tree diagram represents current tree locations in temporary preservation area south of bridge, east of creek.
2. All trees are tagged with the numbers shown on key plan.
3. Trees with hatch indicate trees called out on current sheet.
4. Arrows indicate side of tree which shall face south when replanted.



PLANTING LEGEND	
(A) Existing Tree to remain Reference specifications for existing tree protection and treatment.	(CC) Natchez Crape Myrtle <i>Lagerstroemia indica 'Natchez'</i> 12'-14' ht, multi trunk, 3-5 canes, grown for height.
(B) Preserved Live Oak <i>Quercus virginiana</i> On-site, field dug specimen, requires 168" tree spade to move, LA to select and place. Ref. to "Tree Preservation Area Legend & Notes" (Inset on sheets L11-03, L11-04, L11-05 & L11-08) for number suffix.	(CC-2) Natchez Crape Myrtle <i>Lagerstroemia indica 'Natchez'</i> 10'-12' ht, multi trunk, 3-5 canes, grown for height.
(C) Live Oak <i>Quercus virginiana</i> 4" cal, single trunk, container grown.	(DD) Oklahoma Redbud <i>Cercis canadensis 'Oklahoma'</i> 3"-3 1/2" cal, 8' ht, container grown
(C1) Live Oak, 'High Rise' <i>Quercus virginiana, 'QVTIA'</i> 4" cal, single trunk, container grown.	(EE) Weeping Love Grass <i>Eragrostis curvula</i>
(D) NOT USED.	(FF) Vitex <i>Vitex agnus-castus</i> 65 gal, 10' ht, container, grown for height.
(E) NOT USED.	(GG) Asian Jasmine <i>Trachelospermum asiaticum</i> 1 gal, plant 18" o.c.
(F) Red Oak <i>Quercus texana</i> 4" cal, container grown.	(HH) Horsetail Reed <i>Equisetum hyemale</i> 1 gal, plant 18" o.c.
(G) Shumard Oak <i>Quercus shumardii</i> 4" cal, container grown.	(II) Grass Mix for Hydromulch Reference specifications for percentage of each seed for mixture: 1. Sideoats Grama, <i>Bouteloua curtipendula</i> ; 2. Inland Sea Oats, <i>Chasmanthium latifolium</i> ; 3. Prairie Wild Rye, <i>Elymus canadensis</i> ; 4. Purple Top, <i>Tridens flavus</i> ; 5. Virginia Wild Rye, <i>Elymus virginicus</i> ; 6. Plains Bristlegrass, <i>Setaria vulpiseta</i> .
(H) Chinkapin Oak <i>Quercus muhlenbergii</i> 4" cal, container grown.	(JJ) Midiron Bermuda <i>Cynodon dactylon 'Midiron'</i> sod, pinned on slopes greater than 6:1.
(I) Bald Cypress <i>Taxodium distichum</i> 4" cal, container grown.	(KK) Harbor Dwarf Nandina <i>Nandina domestica 'Harbor Dwarf'</i> 15 gal., 3' ht., 36" o.c.
(J) Pond Cypress <i>Taxodium ascendens</i> 4" cal, container grown.	(LL) Dwarf Chinese Holly <i>Ilex cornuta 'Rotunda'</i> 15 gal., 3' ht., 36" o.c.
(K) Texas Ash <i>Fraxinus texensis</i> 4" cal, container grown.	(MM) Creeping Fig <i>Ficus Pumila</i> 1 gal., staggered 18"-24" o.c.
(L) Lacebark Elm <i>Ulmus parvifolia</i> 4" caliper, container grown.	(NN) Mondo Grass <i>Ophiopogon japonicus</i> 4" pot, max. 8" o.c., diamond pattern.
(M) River Birch <i>Betula nigra</i> 12-14' ht., 3-5 canes each, B&B.	
(AA) NOT USED.	
(BB) Savannah Holly <i>Ilex opaca x attenuata 'Savannah'</i> 4" cal, single trunk, 12' ht, tree form, container grown.	

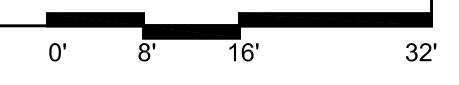
- PLANTING NOTES:**
1. All tree locations that are shown shall be staked by the Landscape Contractor and the stakes approved in writing by the town of Addison and Landscape Architect, prior to any tree planting.
 2. Any and all tree plantings shall not be planted less than five feet (clear) to the back of the pond edge walls.
 3. See planting detail (1/L1-22) for special staking detail for tree plantings located on the islands.
 4. Civil information for reference only. Verify actual location of utilities with Civil drawings.
 5. All undimensioned trees for contractor to stake.
 6. Contractor to provide aeration, pruning, and fertilization of preserved live oaks by an ISA certified arborist prior to construction around the trees.
 7. Landscape contractor's scope of work to begin at finished grade minus 4".

NO.	REVISION	BY	DATE
1	PLANTING REVISIONS	KSS	2/14/11

TOWN OF ADDISON
 DALLAS COUNTY, TEXAS
PARK AND STREETSCAPE IMPROVEMENTS
 VITRUVIAN PARK
SOUTHERN PARK AREA -B
PLANTING PLAN - TREES

KEVIN SLOAN STUDIO 2400 Empire Central, Suite F
 Dallas, Texas 75235 (214) 459-1784

PROJECT	DESIGN	DRAWN	DATE	FILE	SHEET
5029-01	KWS	JP	APR 26, 2010	PW # 2009-04	L11-04



PARK AND STREETSCAPE IMPROVEMENTS - VITRUVIAN PARK