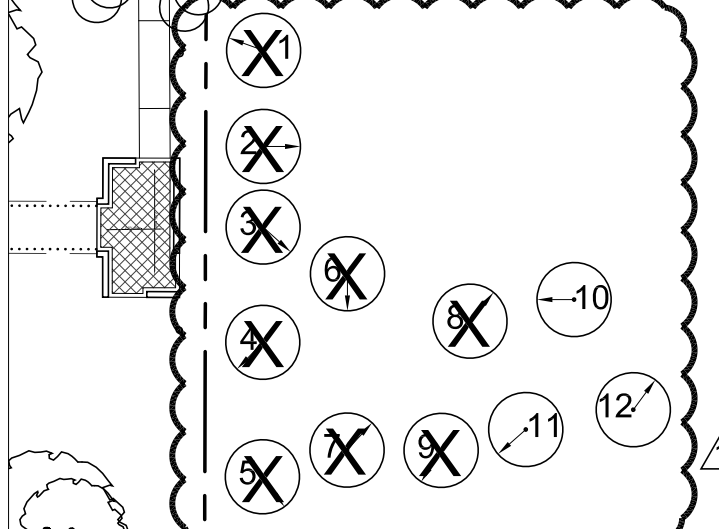


PLANT QUANTITIES

- (J) (26) Pond Cypress
Taxodium ascendens
4" caliper, container matched
- (M) (15) River Birch
Betula nigra
12-14' ht., 3-5 canes, B&B.
- (DD) (22) Oklahoma Redbud
Cercis canadensis 'Oklahoma'
3"-3 1/2" cal, 8' ht, B&B.

NOTE: ALL tree locations that are shown shall be staked by the Landscape Contractor and the locations of the stakes approved in writing by the town of Addison and Landscape Architect, prior to any tree planting.

TREE PRESERVATION AREA LEGEND & NOTES



1. Tree diagram represents current tree locations in temporary preservation area south of bridge, east of creek.
2. All trees are tagged with the numbers shown on key plan.
3. Trees with hatch indicate trees called out on current sheet.
4. Arrows indicate side of tree which shall face south when replanted.

PLANTING LEGEND

<p>(A) Existing Tree to remain Reference specifications for existing tree protection and treatment.</p> <p>(B) Preserved Live Oak <i>Quercus virginiana</i> On-site, field dug specimen, requires 168" tree spade to move, LA to select and place. Ref. to "Tree Preservation Area Legend & Notes" (Inset on sheets L11-03, L11-04, L11-05 & L11-08) for number suffix.</p> <p>(C) Live Oak <i>Quercus virginiana</i> 4" cal, single trunk, container grown.</p> <p>(C1) Live Oak, 'High Rise' <i>Quercus virginiana, 'QV7IA'</i> 4" cal, single trunk, container grown.</p> <p>(D) NOT USED.</p> <p>(E) NOT USED.</p> <p>(F) Red Oak <i>Quercus texana</i> 4" cal, container grown.</p> <p>(G) Shumard Oak <i>Quercus shumardii</i> 4" cal, container grown.</p> <p>(H) Chinkapin Oak <i>Quercus muhlenbergii</i> 4" cal, container grown.</p> <p>(I) Bald Cypress <i>Taxodium distichum</i> 4" cal, container grown.</p> <p>(J) Pond Cypress <i>Taxodium ascendens</i> 4" cal, container grown.</p> <p>(K) Texas Ash <i>Fraxinus texensis</i> 4" cal, container grown.</p> <p>(L) Lacebark Elm <i>Ulmus parvifolia</i> 4" caliper, container grown.</p> <p>(M) River Birch <i>Betula nigra</i> 12-14' ht., 3-5 canes each, B&B.</p> <p>(AA) NOT USED.</p> <p>(BB) Savannah Holly <i>Ilex opaca x attenuata 'Savannah'</i> 4" cal, single trunk, 12' ht, tree form, container grown.</p>	<p>(CC) Natchez Crape Myrtle <i>Lagerstroemia indica 'Natchez'</i> 12-14' ht, multi trunk, 3-5 canes, grown for height.</p> <p>(CC-2) Natchez Crape Myrtle <i>Lagerstroemia indica 'Natchez'</i> 10-12' ht, multi trunk, 3-5 canes, grown for height.</p> <p>(DD) Oklahoma Redbud <i>Cercis canadensis 'Oklahoma'</i> 3"-3 1/2" cal, 8' ht, container grown</p> <p>(EE) Weeping Love Grass <i>Eragrostis curvula</i></p> <p>(FF) Vitex <i>Vitex agnus-castus</i> 65 gal, 10' ht, container, grown for height.</p> <p>(GG) Asian Jasmine <i>Trachelospermum asiaticum</i> 1 gal, plant 18" o.c.</p> <p>(HH) Horsetail Reed <i>Equisetum hyemale</i> 1 gal, plant 18" o.c.</p> <p>(II) Grass Mix for Hydromulch Reference specifications for percentage of each seed for mixture: 1. Sideoats Grama, <i>Bouteloua curtipendula</i>; 2. Inland Sea Oats, <i>Chasmanthium latifolium</i>; 3. Prairie Wild Rye, <i>Elymus canadensis</i>; 4. Purple Top, <i>Tridens flavus</i>; 5. Virginia Wild Rye, <i>Elymus virginicus</i>; 6. Plains Bristlegrass, <i>Setaria vulpiseta</i>.</p> <p>(JJ) Midiron Bermuda <i>Cynodon dactylon 'Midiron'</i> sod, pinned on slopes greater than 6:1.</p> <p>(KK) Harbor Dwarf Nandina <i>Nandina domestica 'Harbor Dwarf'</i> 15 gal., 3' ht., 36" o.c.</p> <p>(LL) Dwarf Chinese Holly <i>Ilex cornuta 'Rotunda'</i> 15 gal., 3' ht., 36" o.c.</p> <p>(MM) Creeping Fig <i>Ficus Pumila</i> 1 gal., staggered 18"-24" o.c.</p> <p>(NN) Mondo Grass <i>Ophiopogon japonicus</i> 4" pot, max. 8" o.c., diamond pattern.</p>
---	--

PLANTING NOTES:

1. All tree locations that are shown shall be staked by the Landscape Contractor and the stakes approved in writing by the town of Addison and Landscape Architect, prior to any tree planting.
2. Any and all tree plantings shall not be planted less than five feet (clear) to the back of the pond edge walls.
3. See planting detail (1/L1-22) for special staking detail for tree plantings located on the islands.
4. Civil information for reference only. Verify actual location of utilities with Civil drawings.
5. All undimensioned trees for contractor to stake.
6. Contractor to provide aeration, pruning, and fertilization of preserved live oaks by an ISA certified arborist prior to construction around the trees.
7. Landscape contractor's scope of work to begin at finished grade minus 4".

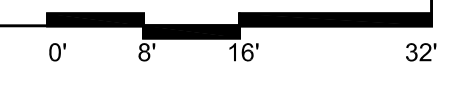
PLANTING REVISIONS		KSS	2/14/11
NO.	REVISION	BY	DATE

TOWN OF ADDISON
 DALLAS COUNTY, TEXAS
PARK AND STREETSCAPE IMPROVEMENTS
 VITRUVIAN PARK

**SOUTHERN PARK AREA - C
PLANTING PLAN - TREES**

KEVIN SLOAN STUDIO 2400 Empire Central, Suite F
 Dallas, Texas 75235 (214) 459-1784

PROJECT	DESIGN	DRAWN	DATE	FILE	SHEET
5029-01	KWS	JP	APR 26, 2010	PW # 2009-04	L11-05



PARK AND STREETSCAPE IMPROVEMENTS - VITRUVIAN PARK