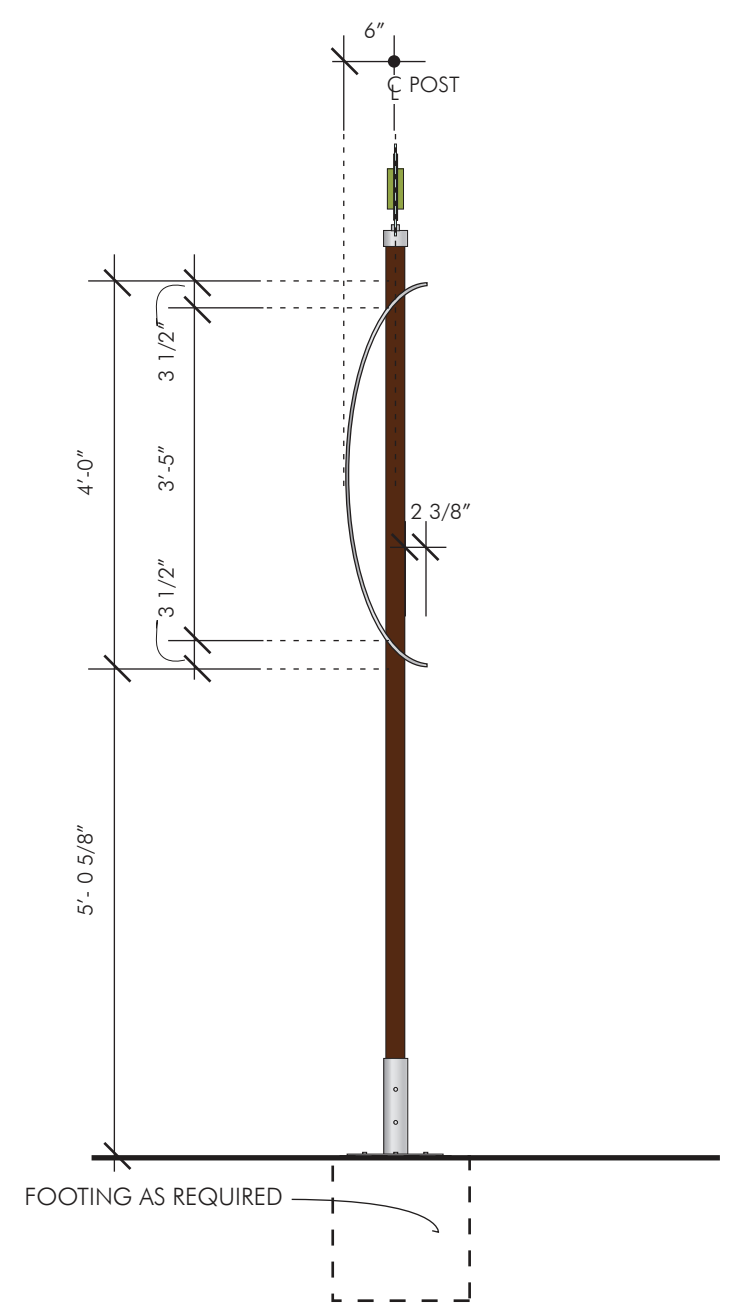
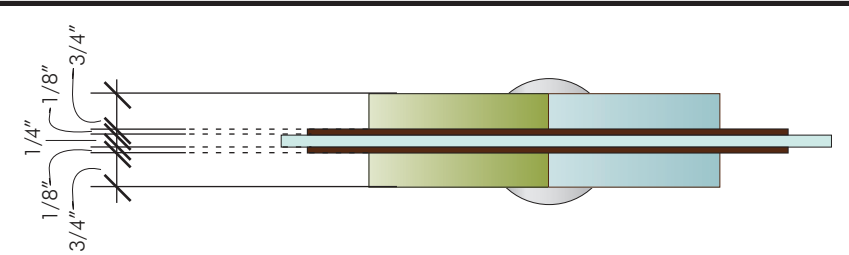


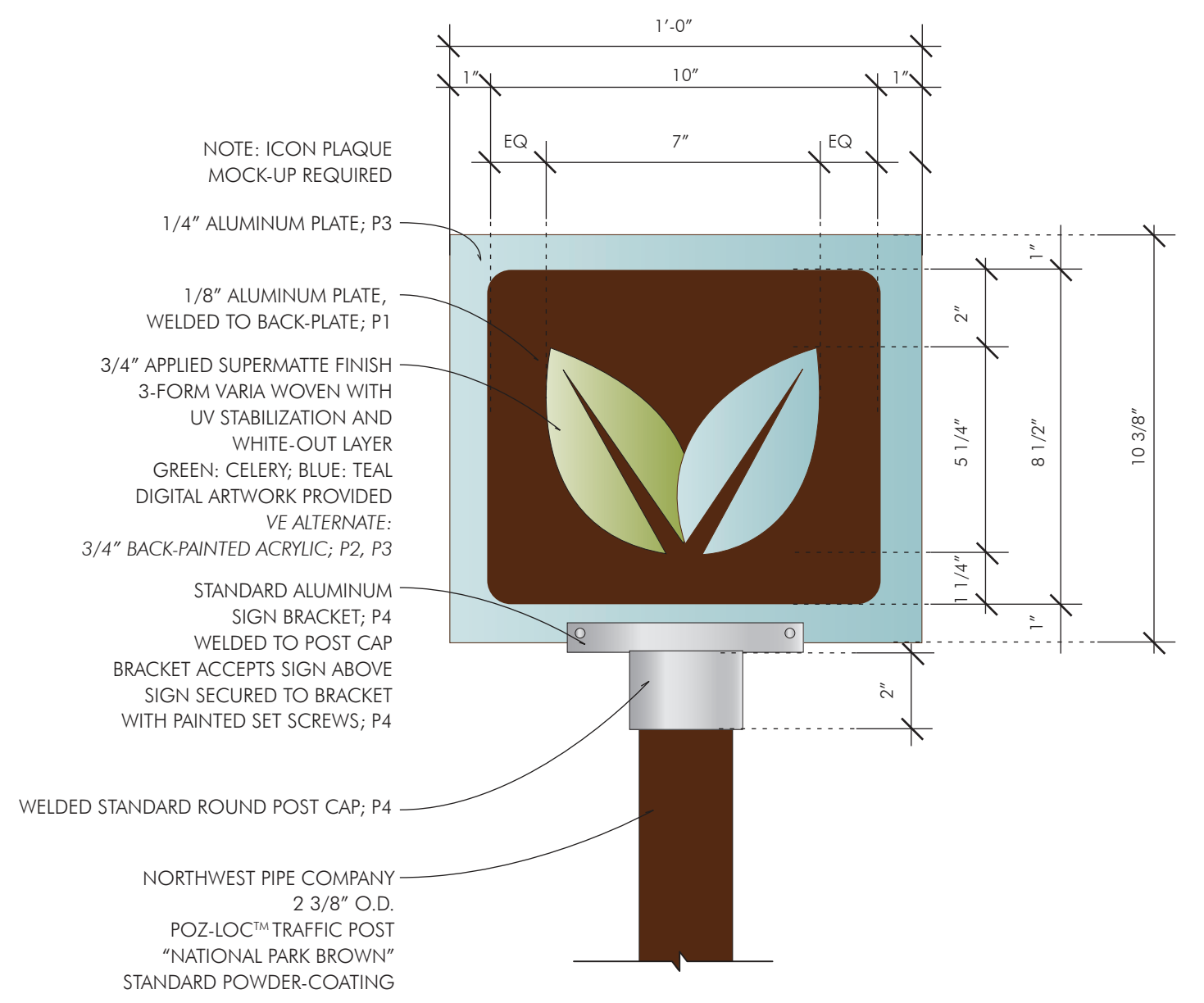
1 PR. 1: FRONT ELEVATION  
1/2" = 1'-0"



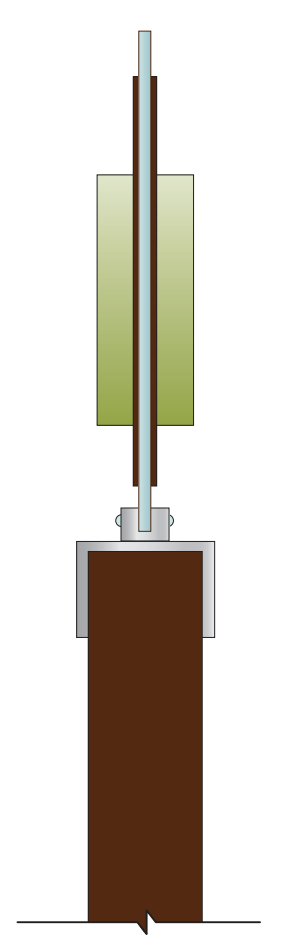
2 PR. 1: SIDE ELEVATION  
1/2" = 1'-0"



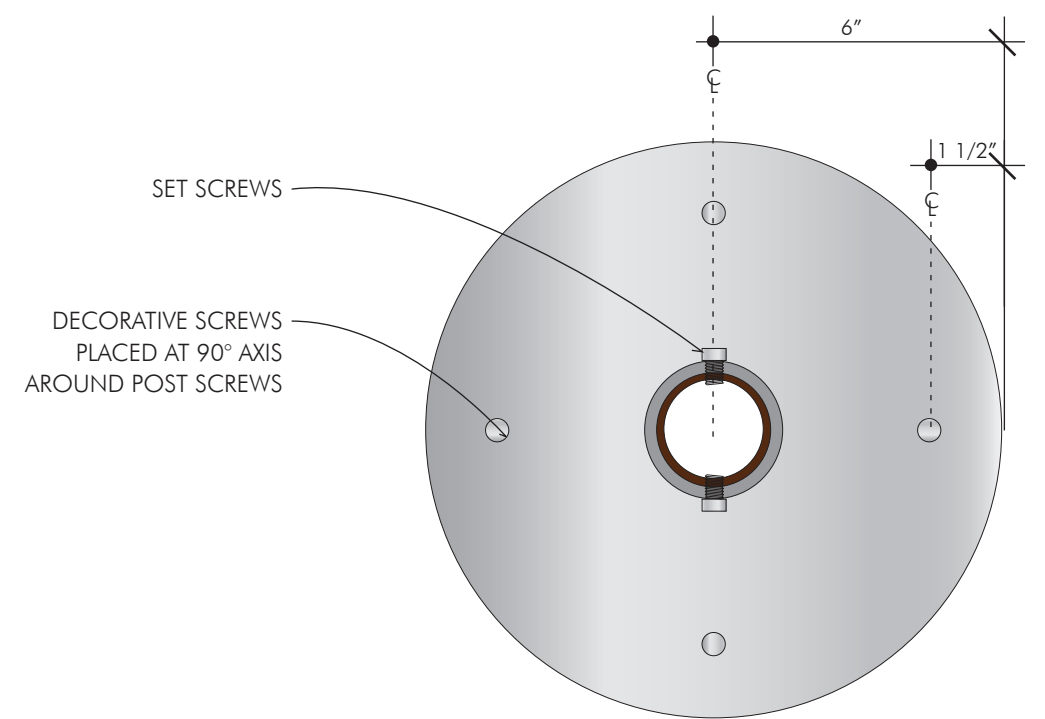
3 TYPICAL ICON PLAQUE PLAN  
3" = 1'-0"



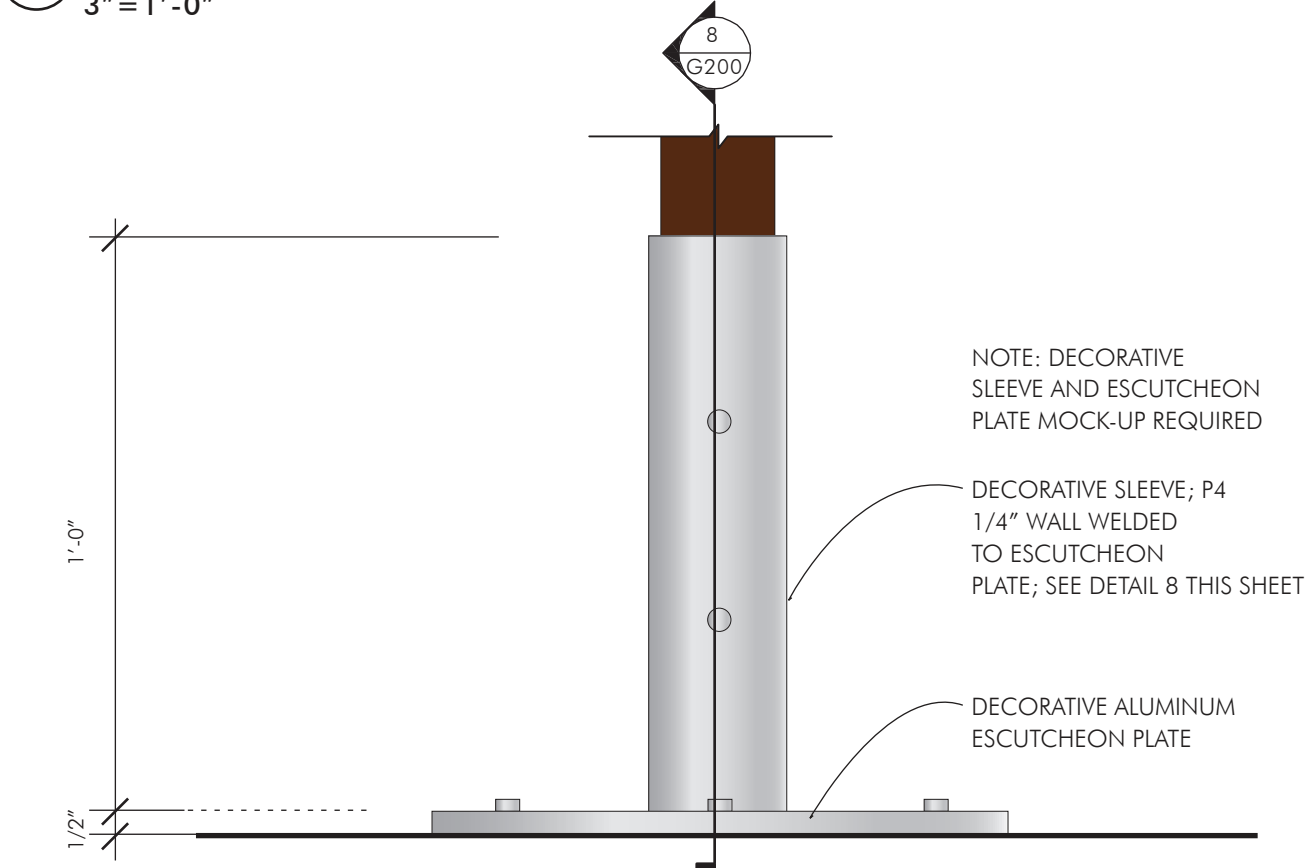
4 TYPICAL ICON PLAQUE FRONT ELEVATION  
3" = 1'-0"



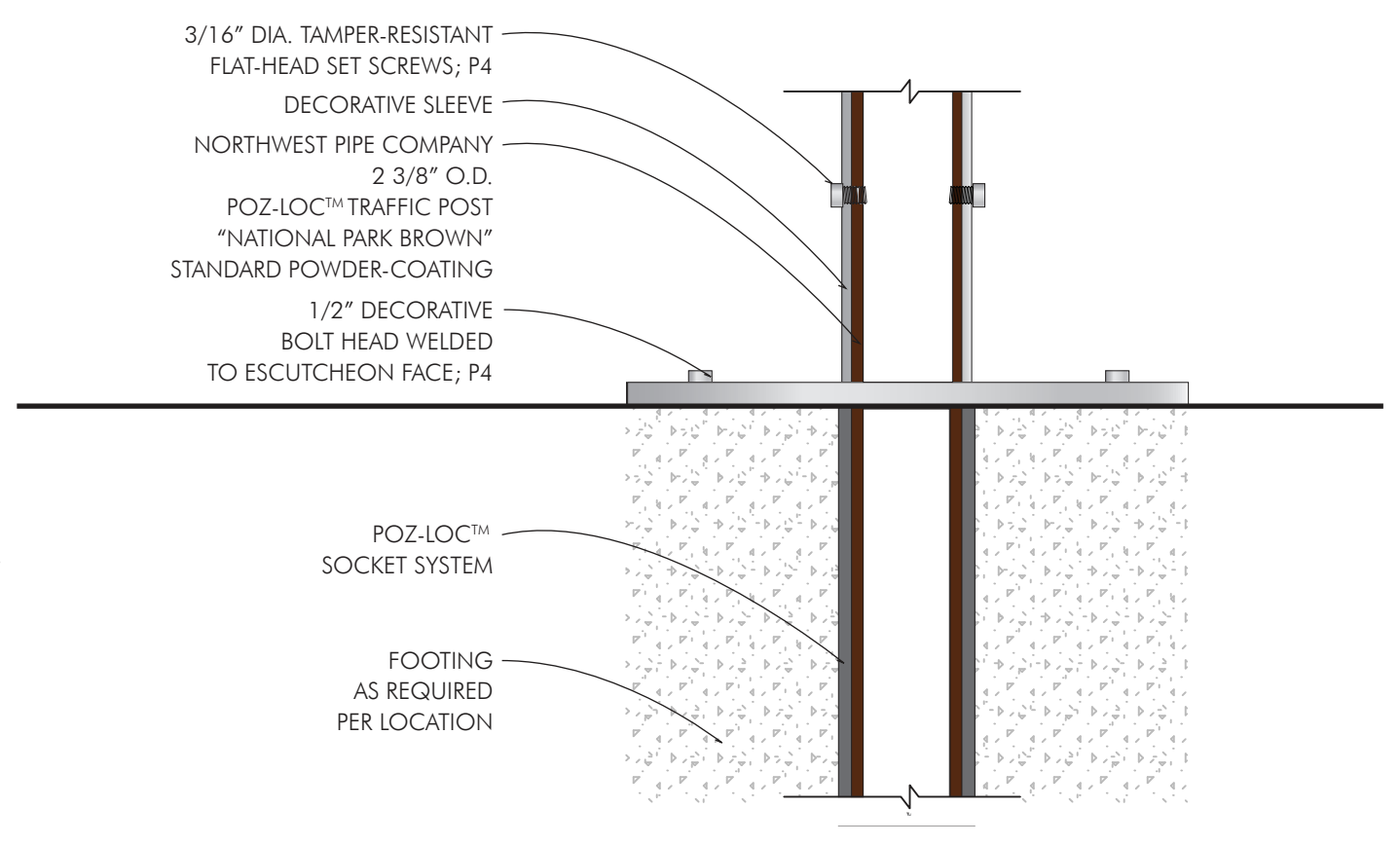
5 TYPICAL ICON PLAQUE SIDE ELEVATION  
3" = 1'-0"



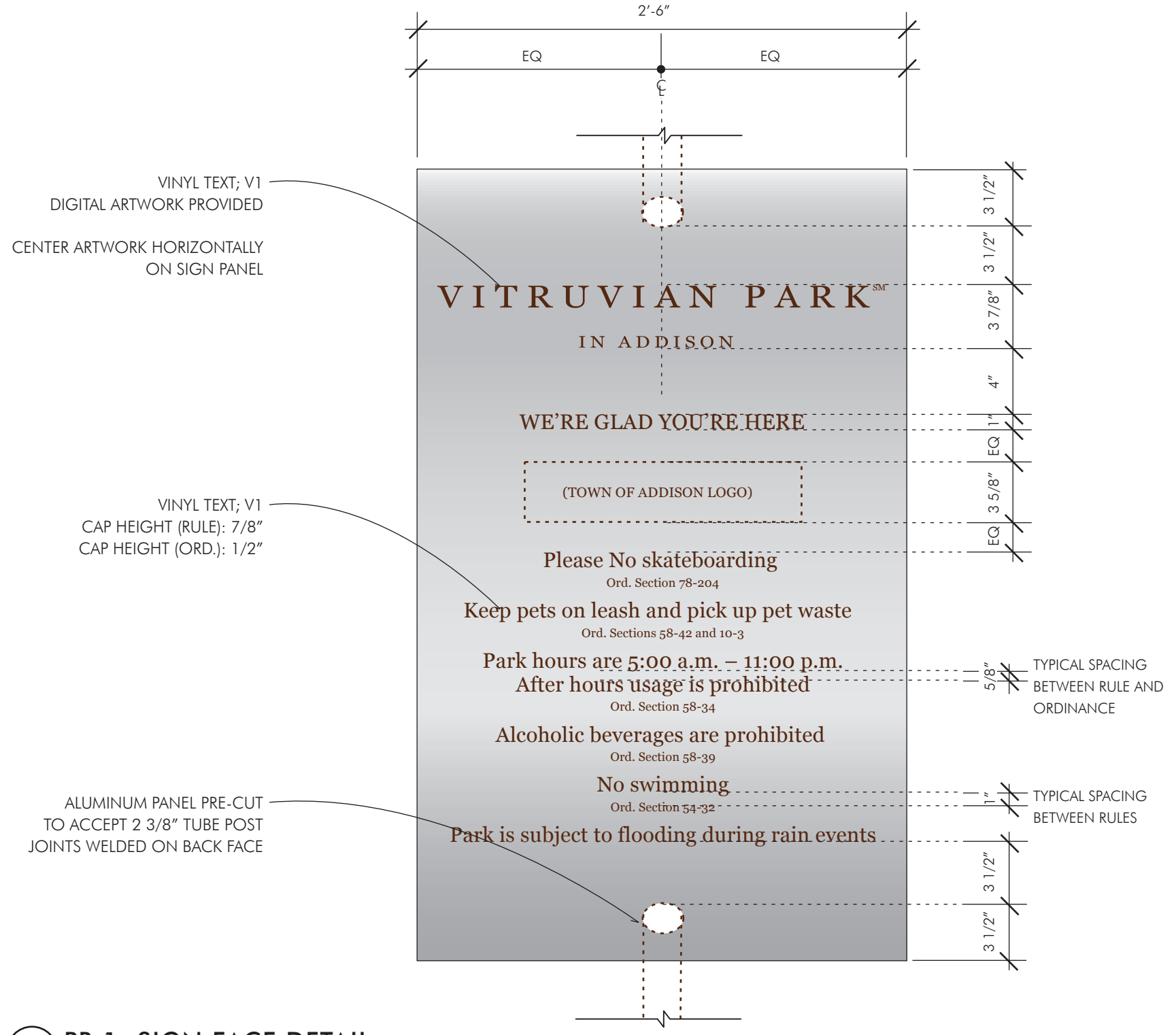
6 TYPICAL SLEEVE BASE PLAN  
3" = 1'-0"



7 TYPICAL SLEEVE BASE FRONT ELEVATION  
3" = 1'-0"



8 TYPICAL SLEEVE BASE SECTION  
3" = 1'-0"



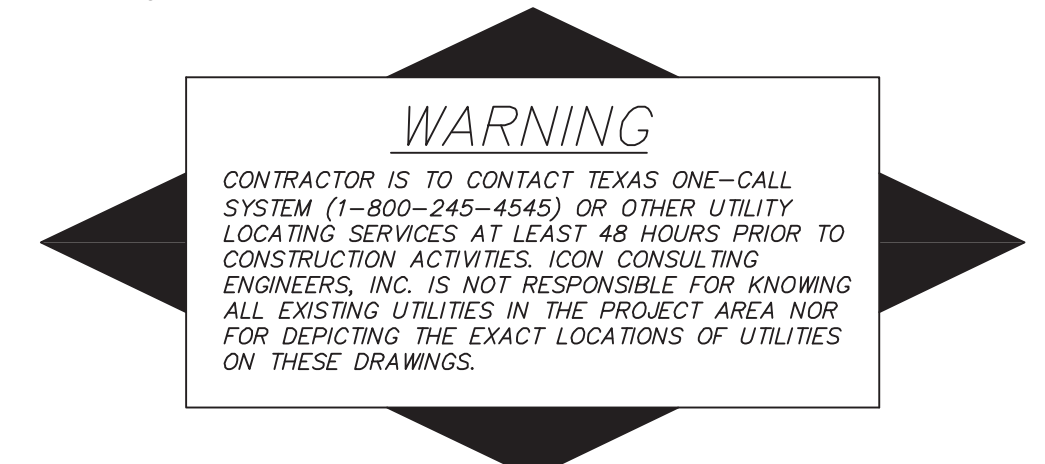
9 PR. 1: SIGN FACE DETAIL  
1 1/2" = 1'-0"

100% DESIGN INTENT DRAWINGS.  
NOT INTENDED FOR CONSTRUCTION.

These drawings are intended to convey design intent only. Final engineering, materials, and fabrication shall remain the responsibility of the Fabricator to ensure quality fit and finish for all components.

Colors are shown for reference only, and are subject to the limitations of the printing process. Refer to finish samples and/or color system swatches for accurate reference.

Messages shown in the drawings are for reference only. Refer to Message Schedule for actual messages required for each sign location.



BM #1 REF. ELEVATION = 559.47  
SQUARE CUT IN TOP OF CURB, SOUTH MEDIAN  
END NOSE, MARSH LANE

1127' NORTH OF VITRUVIAN WAY.  
BM #2 REF. ELEVATION = 547.84  
SQUARE CUT IN TOP OF CURB, NORTH MEDIAN  
END NOSE, AT INTERSECTION OF  
VITRUVIAN WAY AND MARSH LANE.

NO.	REVISION	BY	DATE
TOWN OF ADDISON DALLAS COUNTY, TEXAS  PARK AND STREETSCAPE IMPROVEMENTS VITRUVIAN PARK  PARK SIGNAGE DESIGN INTENT PLANS AND ELEVATIONS			
L.R. KICKS ARCHITECTS 175 LOCUST BLVD., SUITE 500 MCKINNEY, TEXAS 75069 PHONE: 972.527.1440 FAX: 972.527.2760 WWW.LRK.COM			
© 2010 Looney Ricks Kiss Architects, Inc. All Rights Reserved.			
PROJECT	DESIGN	DRAWN	DATE
5029-01	LR	LR	APR 26, 2010
FILE	SHEET		
LRK 0109107-G200	G200		

PARK AND STREETSCAPE IMPROVEMENTS - VITRUVIAN PARK