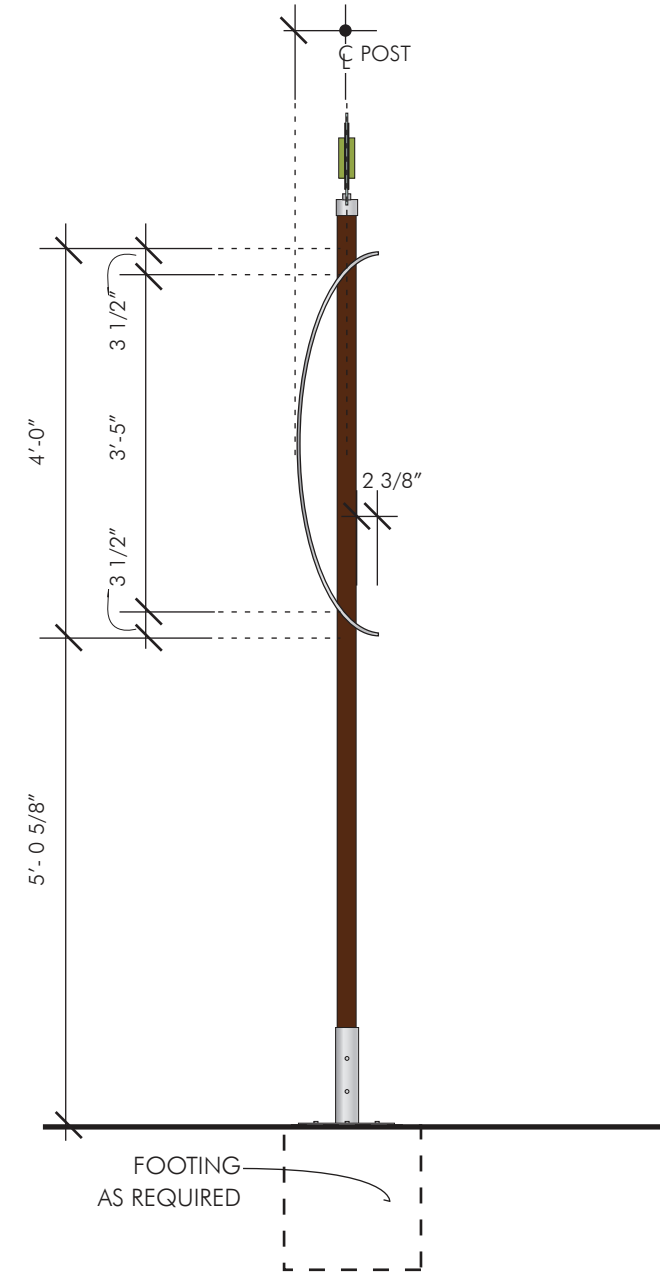
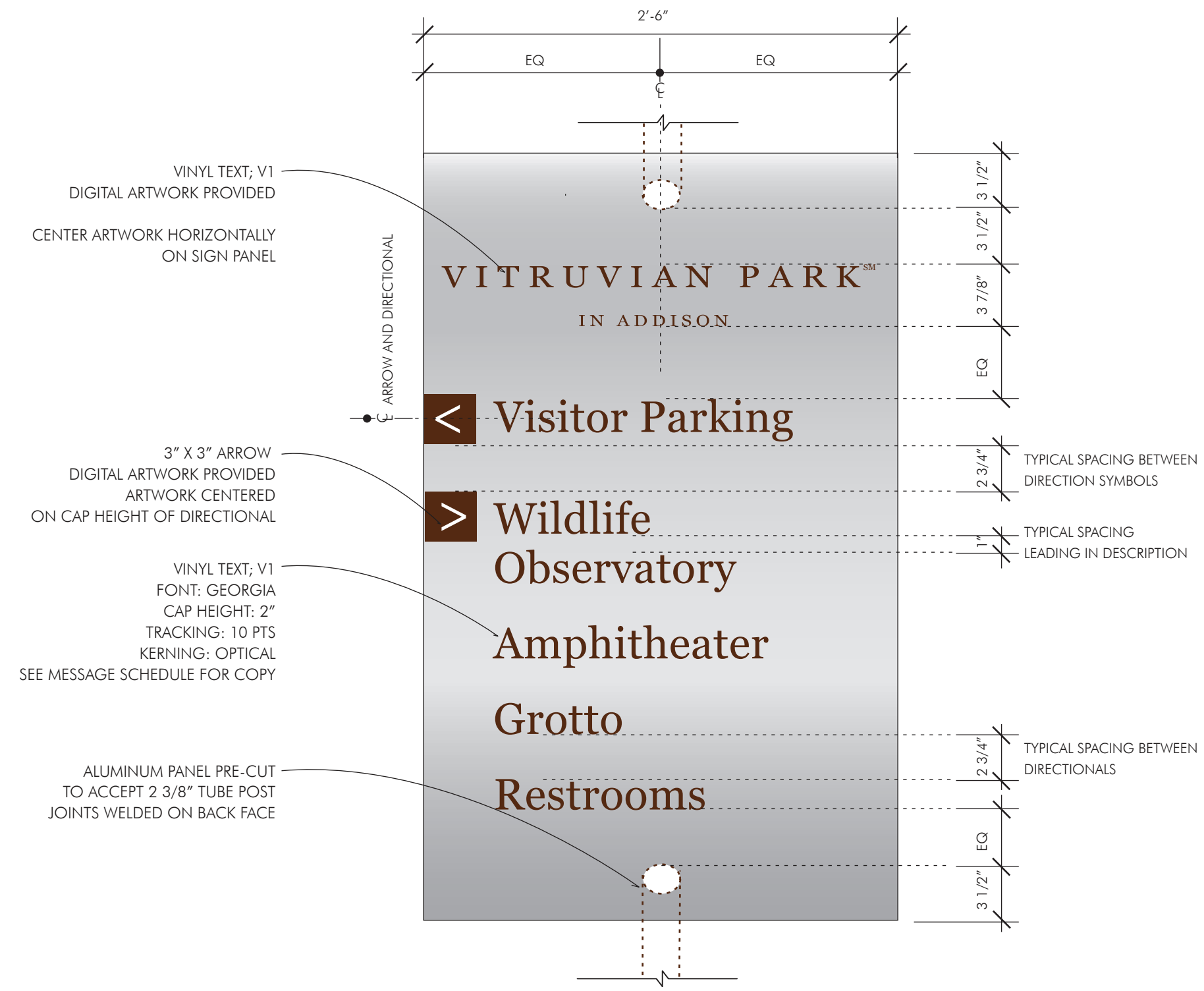


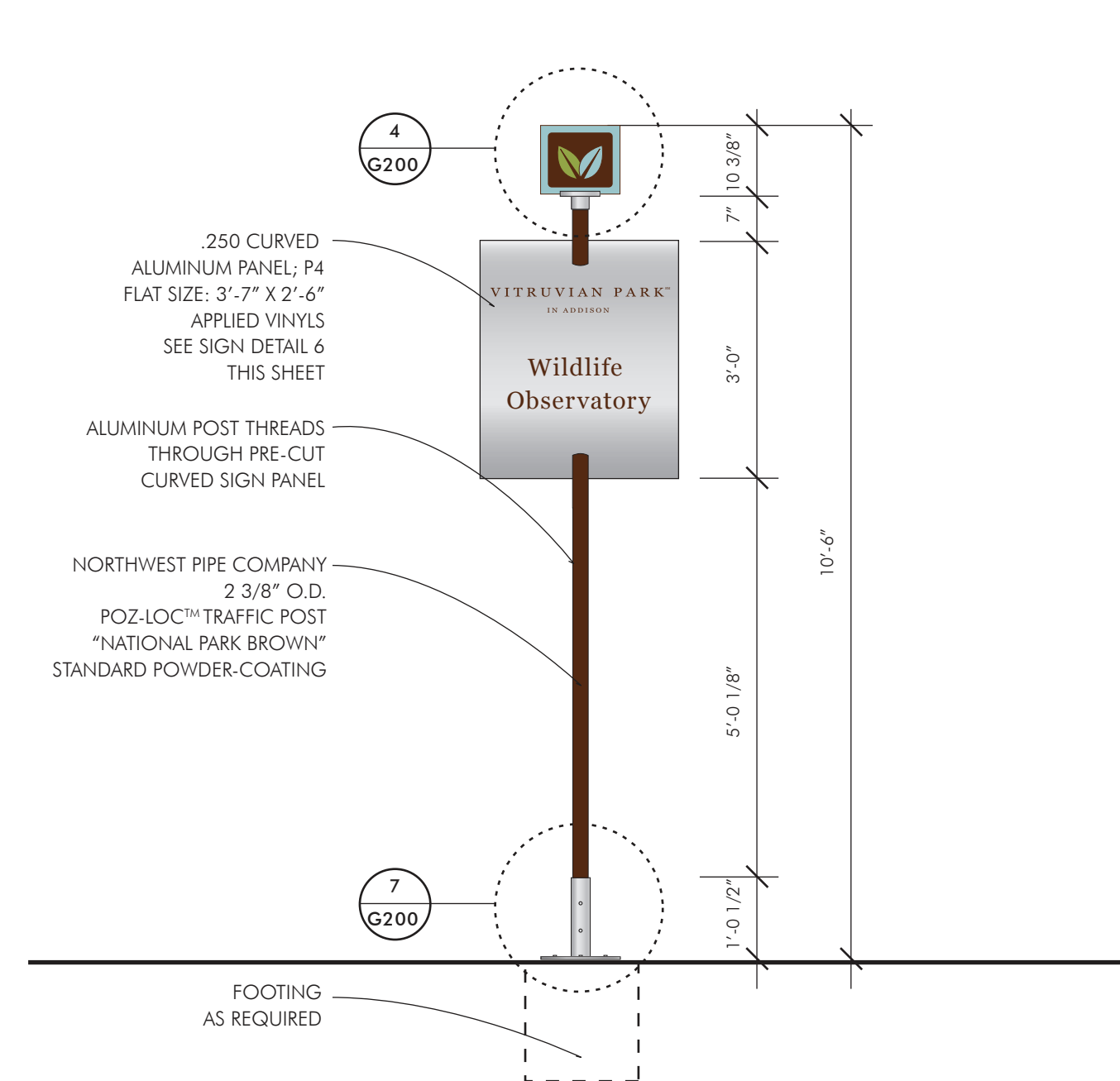
1 PW.1: FRONT ELEVATION
1/2"=1'-0"



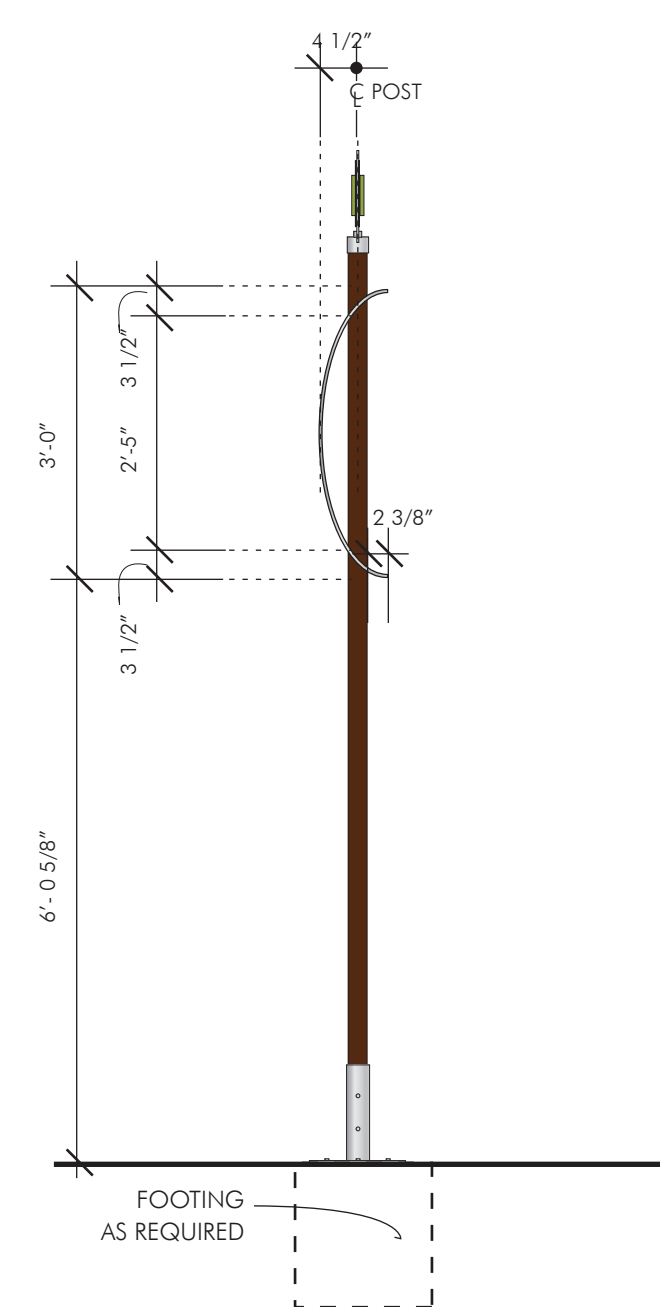
2 PW.1: SIDE ELEVATION
1/2"=1'-0"



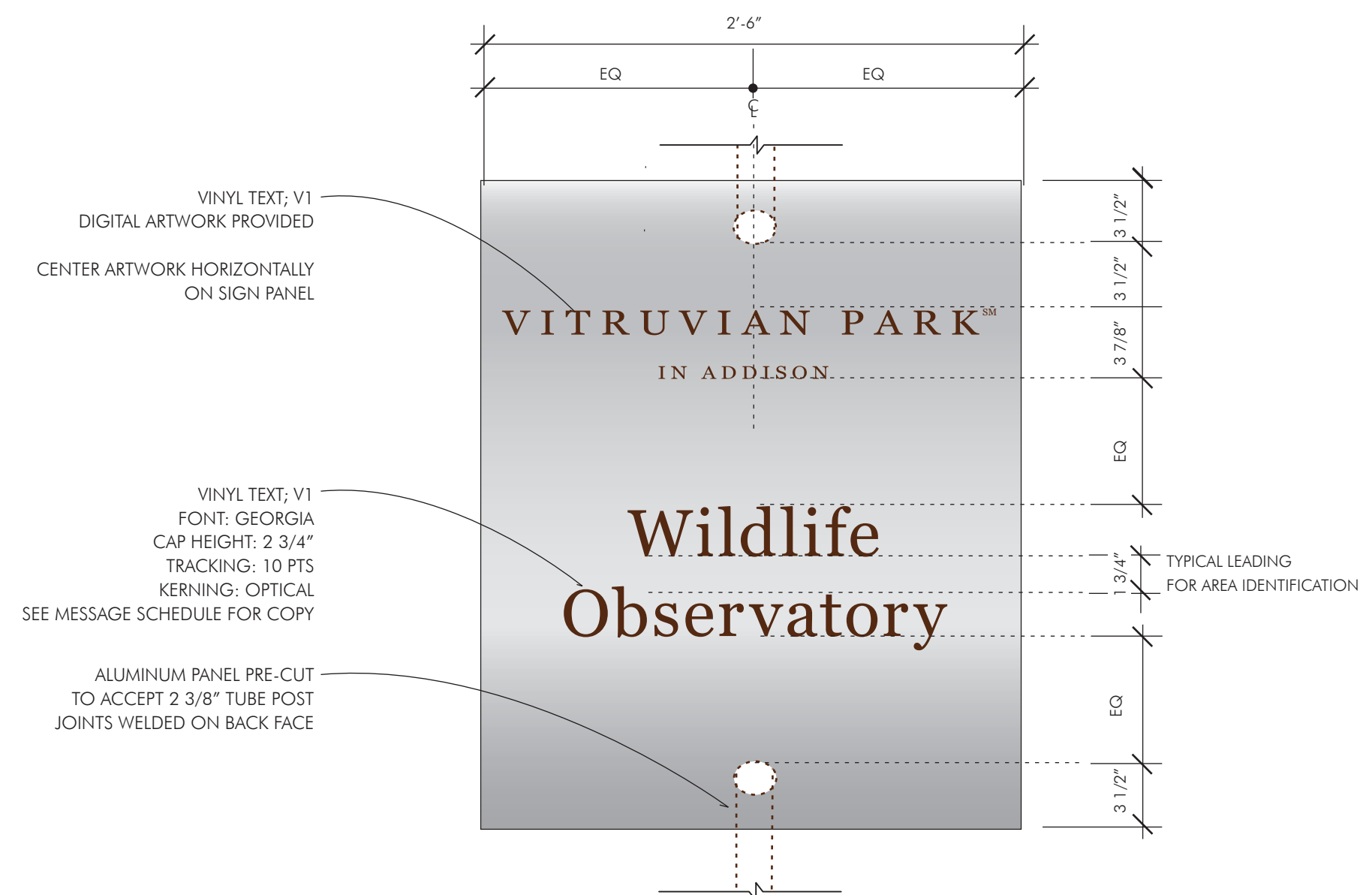
3 PW.1: SIGN FACE DETAIL
1 1/2"=1'-0"



4 PI.1: FRONT ELEVATION
1/2"=1'-0"



5 PI.1: SIDE ELEVATION
1/2"=1'-0"



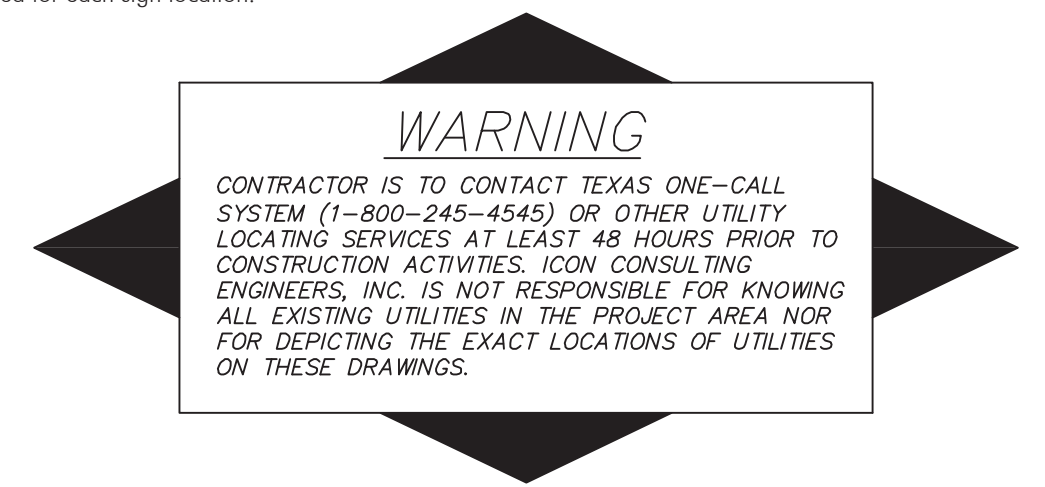
6 PI.1: SIGN FACE DETAIL
1 1/2"=1'-0"

**100% DESIGN INTENT DRAWINGS.
NOT INTENDED FOR CONSTRUCTION.**

These drawings are intended to convey design intent only. Final engineering, materials, and fabrication shall remain the responsibility of the Fabricator to ensure quality fit and finish for all components.

Colors are shown for reference only, and are subject to the limitations of the printing process. Refer to finish samples and/or color system swatches for accurate reference.

Messages shown in the drawings are for reference only. Refer to Message Schedule for actual messages required for each sign location.



BM #1 REF. ELEVATION = 559.47
SQUARE CUT IN TOP OF CURB, SOUTH MEDIAN
END NOSE, MARSH LANE

112' NORTH OF VITRUVIAN WAY,
BM #2 REF. ELEVATION = 547.84
SQUARE CUT IN TOP OF CURB, NORTH MEDIAN
END NOSE, AT INTERSECTION OF

VITRUVIAN WAY AND MARSH LANE.

NO.	REVISION	BY	DATE		
TOWN OF ADDISON DALLAS COUNTY, TEXAS					
PARK AND STREETScape IMPROVEMENTS VITRUVIAN PARK					
PARK SIGNAGE DESIGN INTENT PLANS AND ELEVATIONS					
175 Taylor Road, Suite 600 Weslaco, Texas 75783 Telephone 901.521.1440 Fax 901.525.9760 Internet www.lrk.com					
© 2010 Looney Ricks Kiss Architects, Inc. All Rights Reserved.					
PROJECT	DESIGN	DRAWN	DATE	FILE	SHEET
5029-01	LR	LR	APR 26, 2010	LRK 0109107-G201	G201

PARK AND STREETScape IMPROVEMENTS - VITRUVIAN PARK