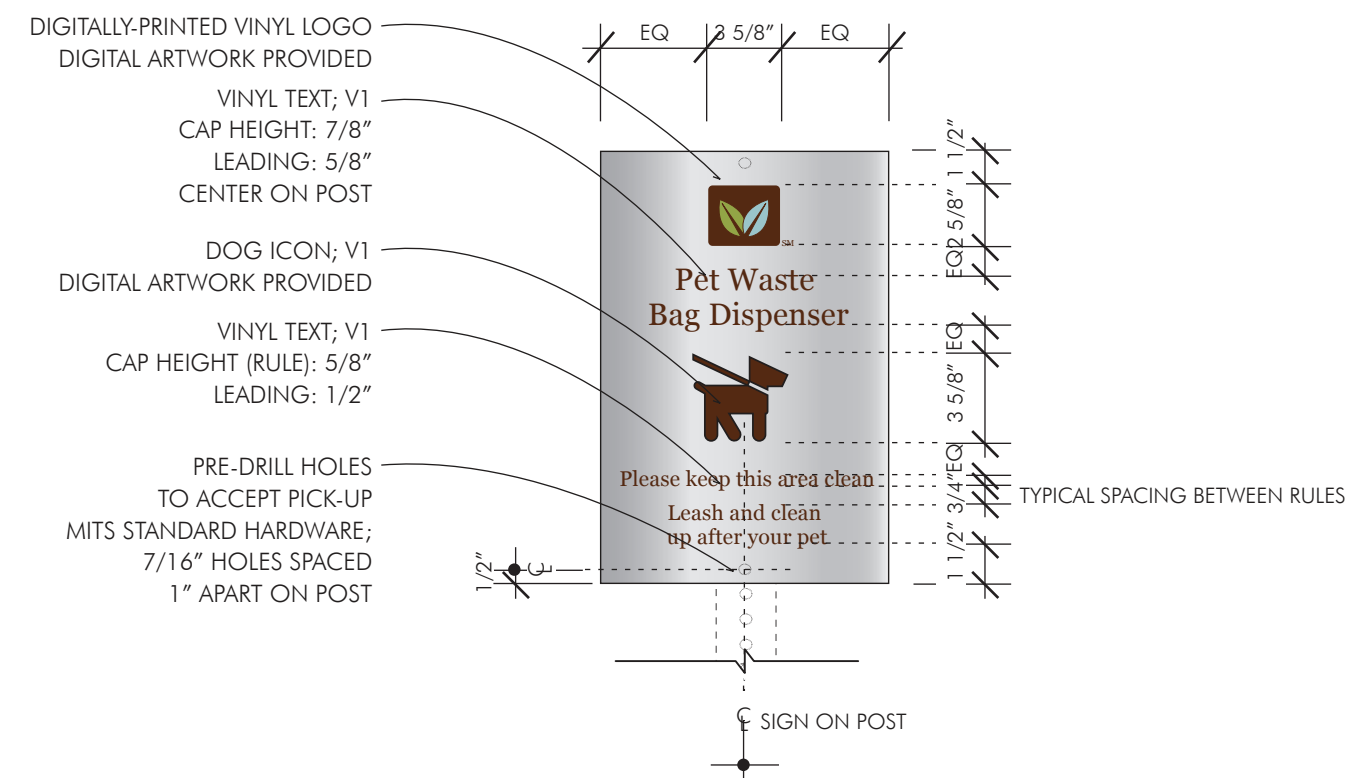
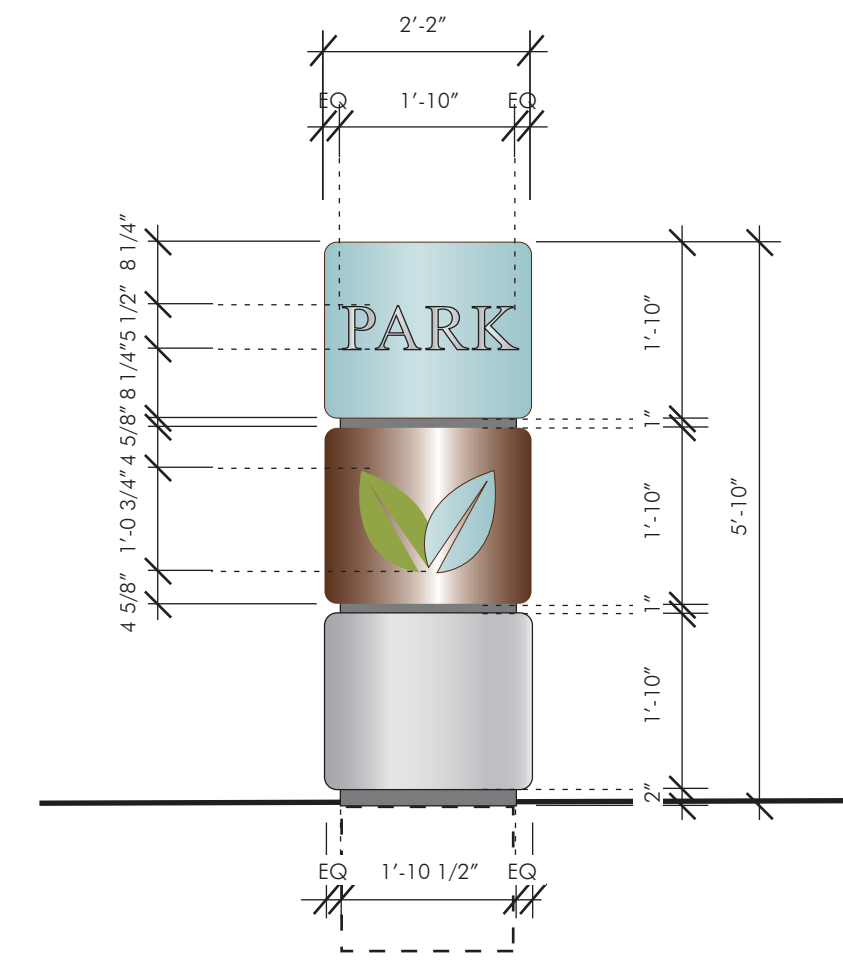


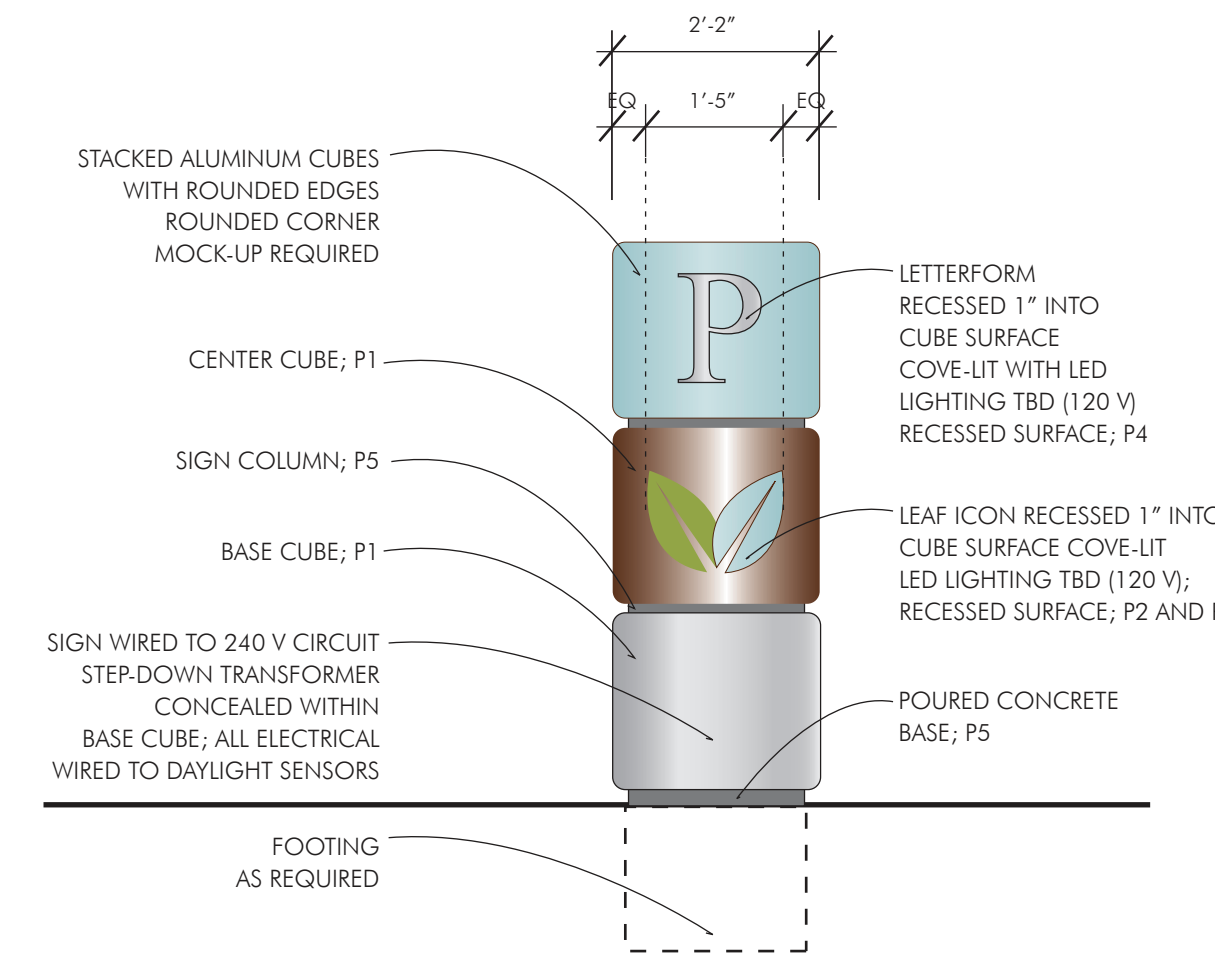
1 PB.1: FRONT ELEVATION  
1/2" = 1'-0"



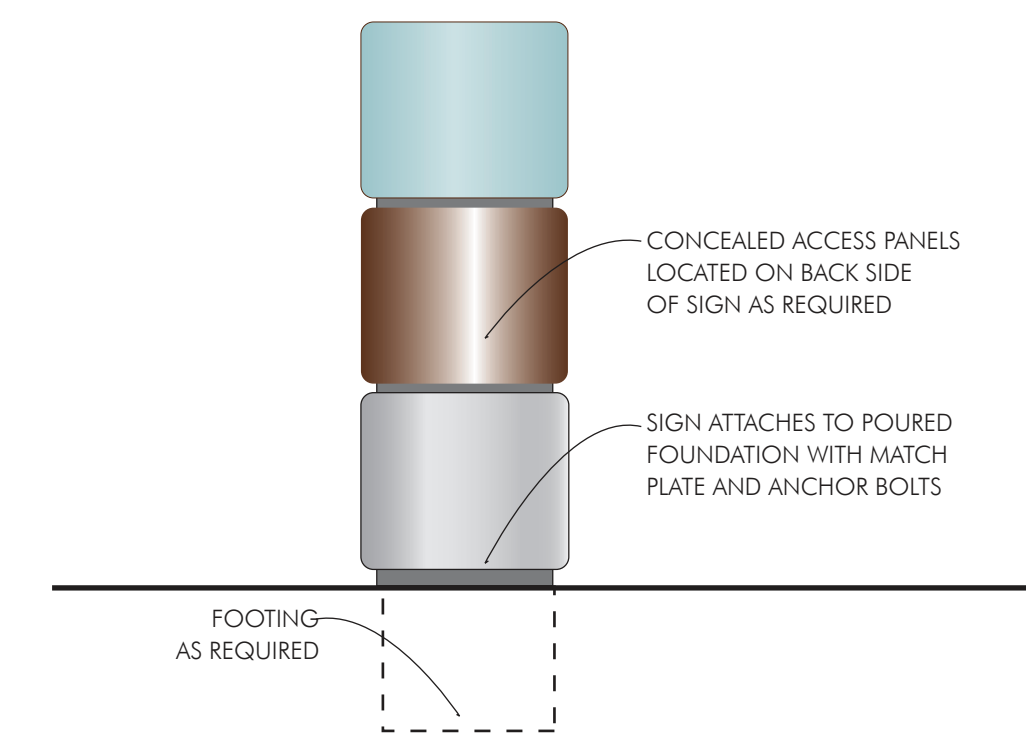
2 PB.1: DETAIL  
1 1/2" = 1'-0"



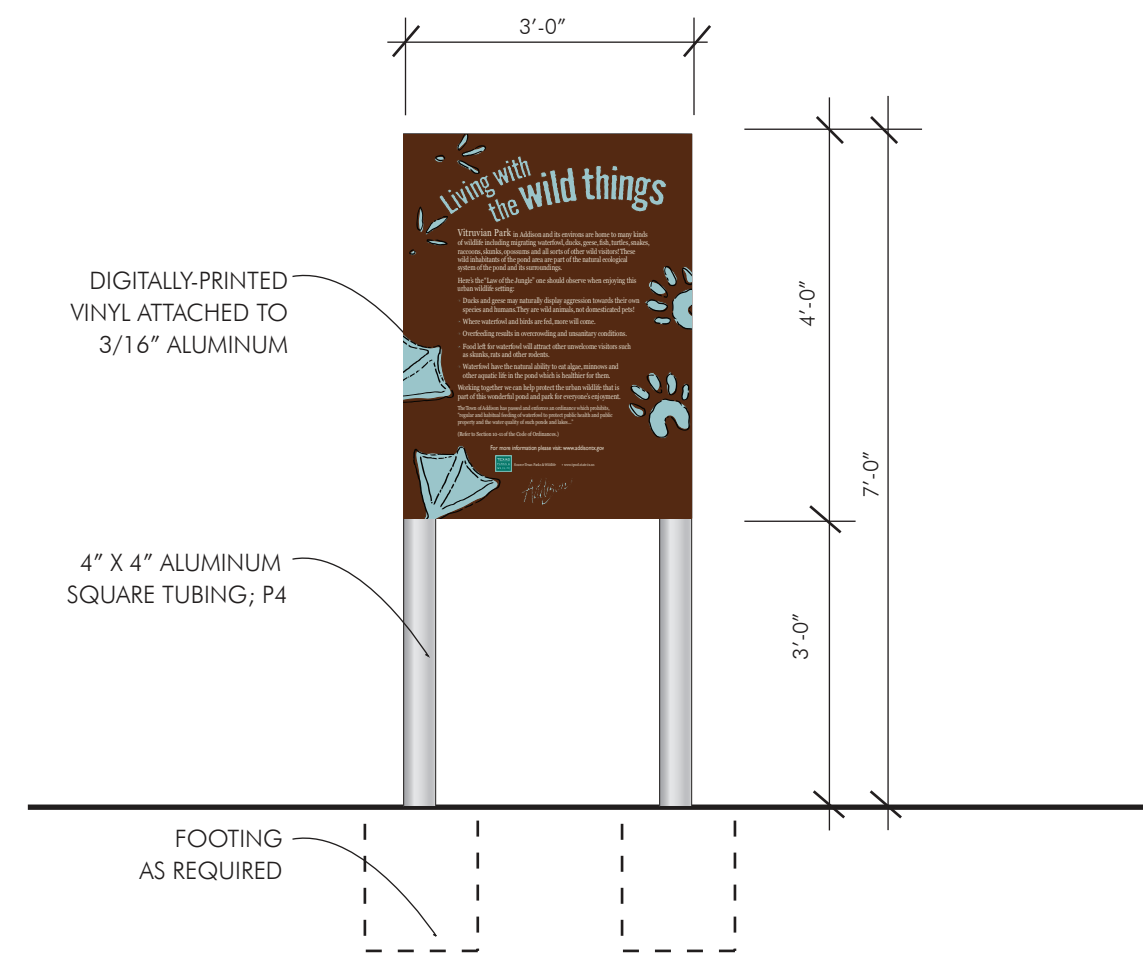
3 PK.1: FRONT ELEVATION  
1/2" = 1'-0"



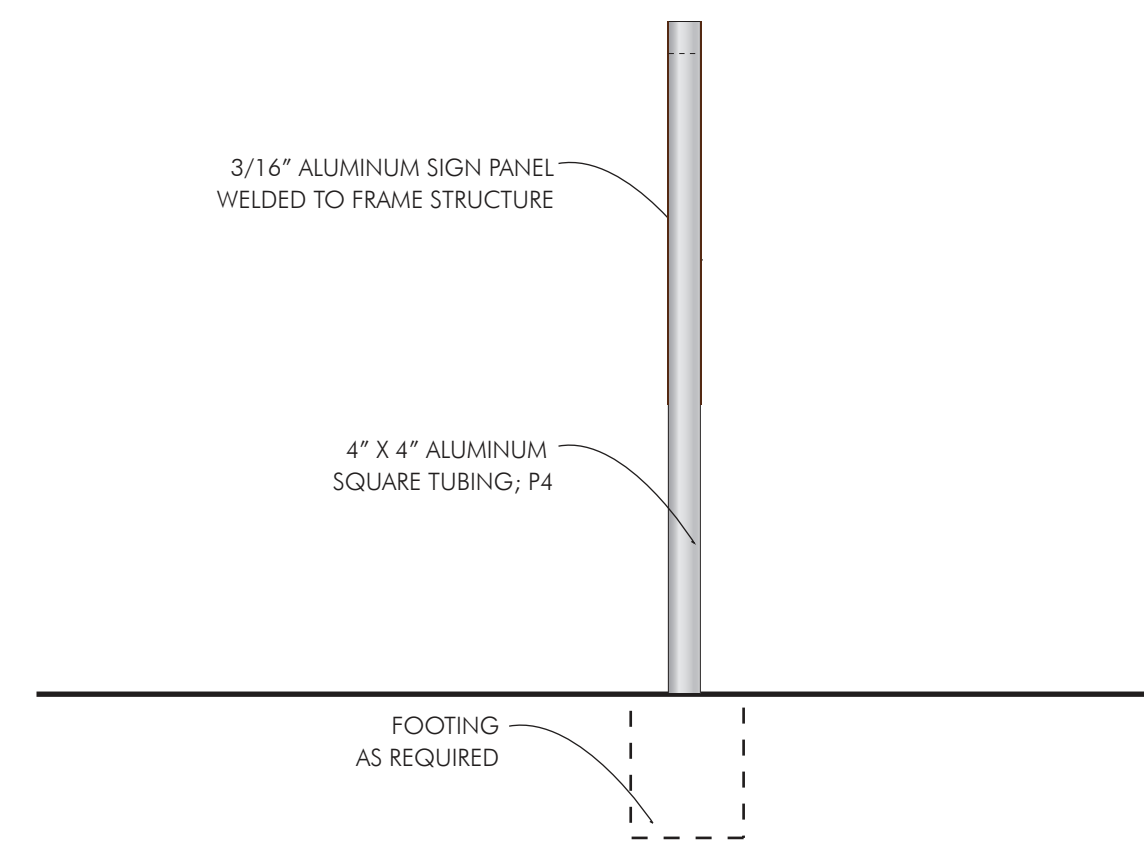
4 PK.1: SIDE ELEVATION  
1/2" = 1'-0"



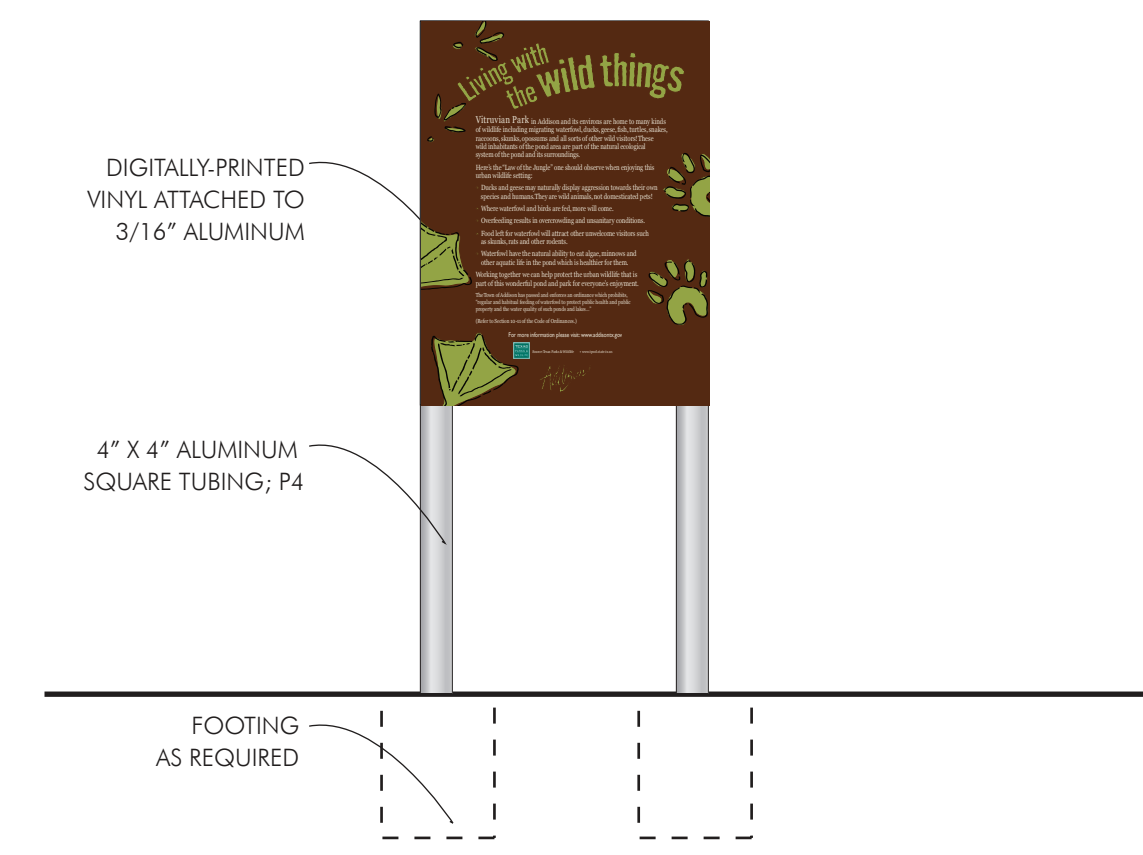
5 PK.1: BACK ELEVATION  
1/2" = 1'-0"



6 PE.1: FRONT ELEVATION  
1/2" = 1'-0"



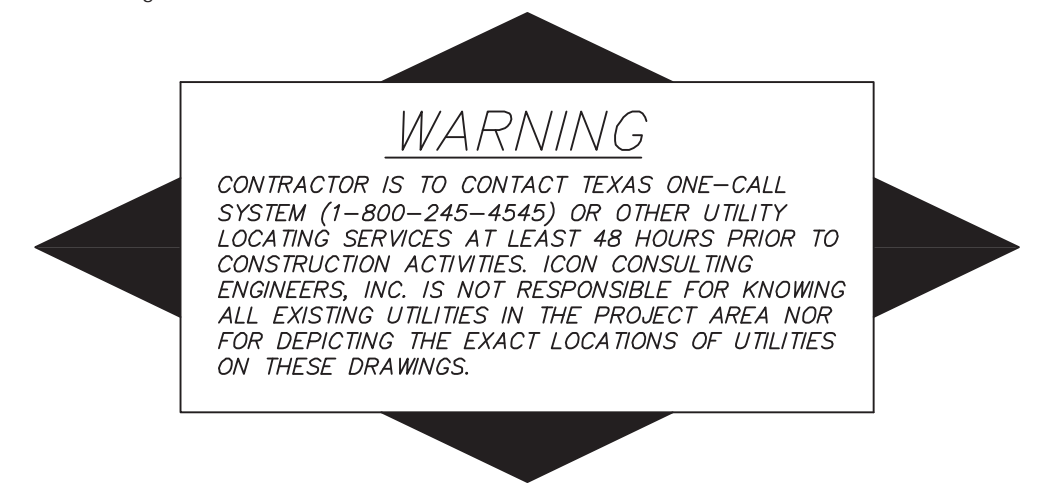
7 PE.1: FRONT ELEVATION  
1/2" = 1'-0"



8 PE.1: BACK ELEVATION  
1/2" = 1'-0"

**100% DESIGN INTENT DRAWINGS.  
NOT INTENDED FOR CONSTRUCTION.**

These drawings are intended to convey design intent only. Final engineering, materials, and fabrication shall remain the responsibility of the Fabricator to ensure quality fit and finish for all components.  
Colors are shown for reference only, and are subject to the limitations of the printing process. Refer to finish samples and/or color system swatches for accurate reference.  
Messages shown in the drawings are for reference only. Refer to Message Schedule for actual messages required for each sign location.



BM #1 REF. ELEVATION = 559.47  
SQUARE CUT IN TOP OF CURB, SOUTH MEDIAN  
END NOSE, MARSH LANE  
1127' NORTH OF VITRUVIAN WAY,  
BM #2 REF. ELEVATION = 547.84  
SQUARE CUT IN TOP OF CURB, NORTH MEDIAN  
END NOSE, AT INTERSECTION OF  
VITRUVIAN WAY AND MARSH LANE.

NO.	REVISION	BY	DATE
<b>TOWN OF ADDISON</b> DALLAS COUNTY, TEXAS <b>PARK AND STREETScape IMPROVEMENTS</b> VITRUVIAN PARK <b>PARK SIGNAGE DESIGN INTENT</b> PLANS AND ELEVATIONS			
L.R. KISS ARCHITECTS 75 Travis, Reno, Suite 600 Memphis, Tennessee 38103 Telephone 901.537.1440 Fax 901.535.2760 Internet www.lrk.com © 2010 Looney Ricks Kiss Architects, Inc. All Rights Reserved.			
PROJECT	DESIGN	DRAWN	DATE
5029-01	LR	LR	APR 26, 2010
FILE	SHEET		
LRK 0109107-G203	G203		

PARK AND STREETScape IMPROVEMENTS - VITRUVIAN PARK