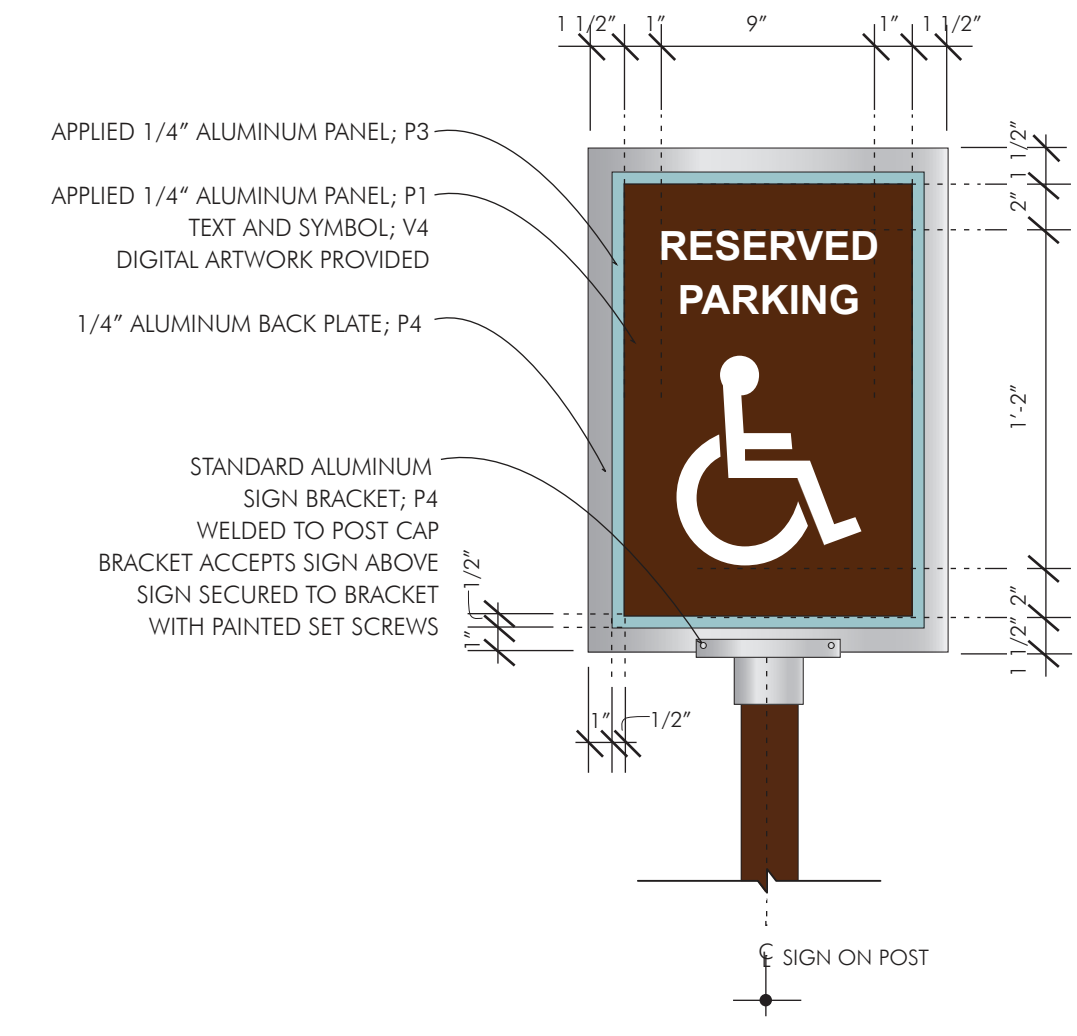
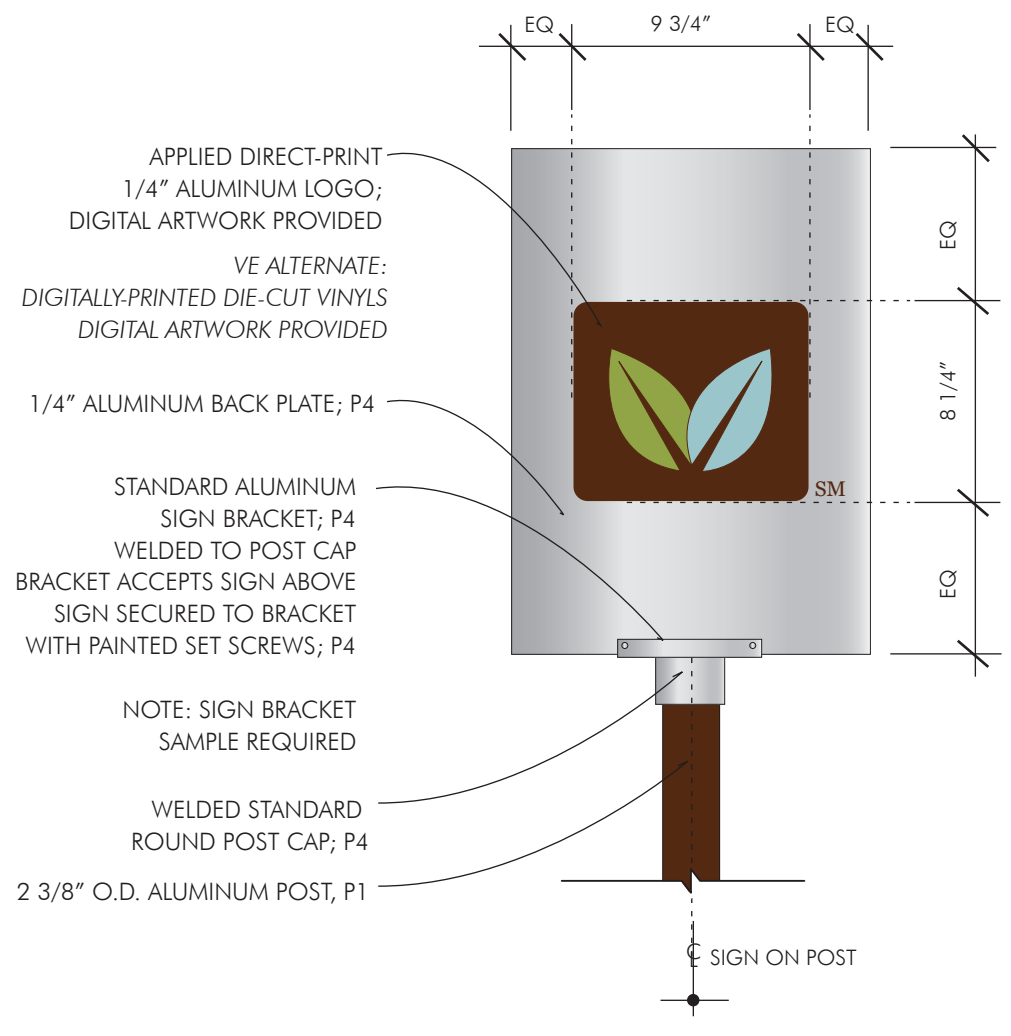


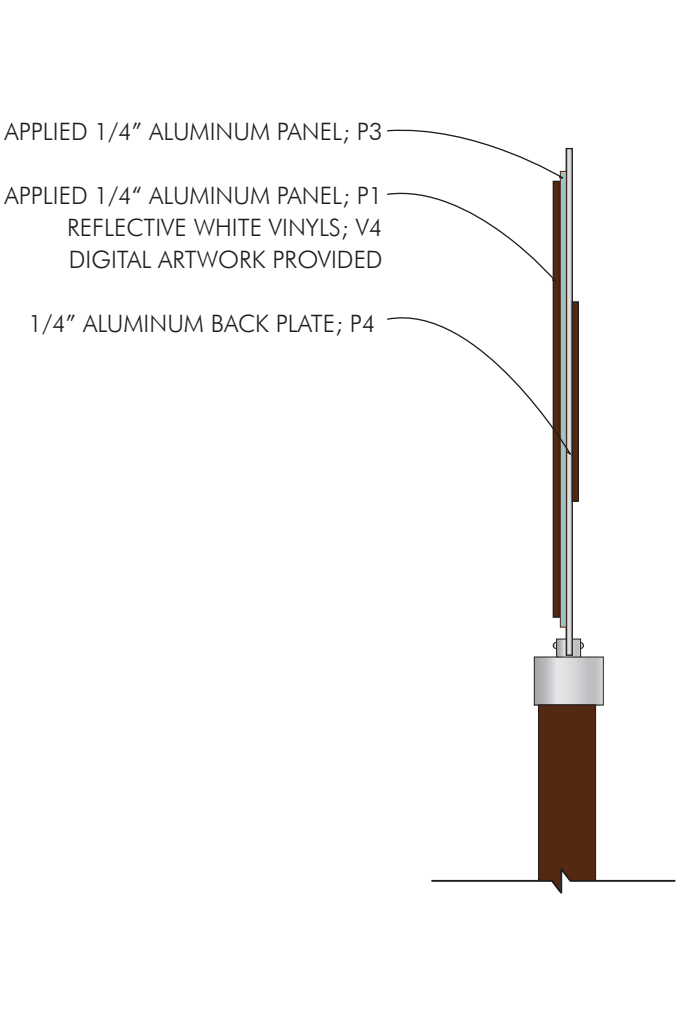
1 PP.1: FRONT ELEVATION  
1/2" = 1'-0"



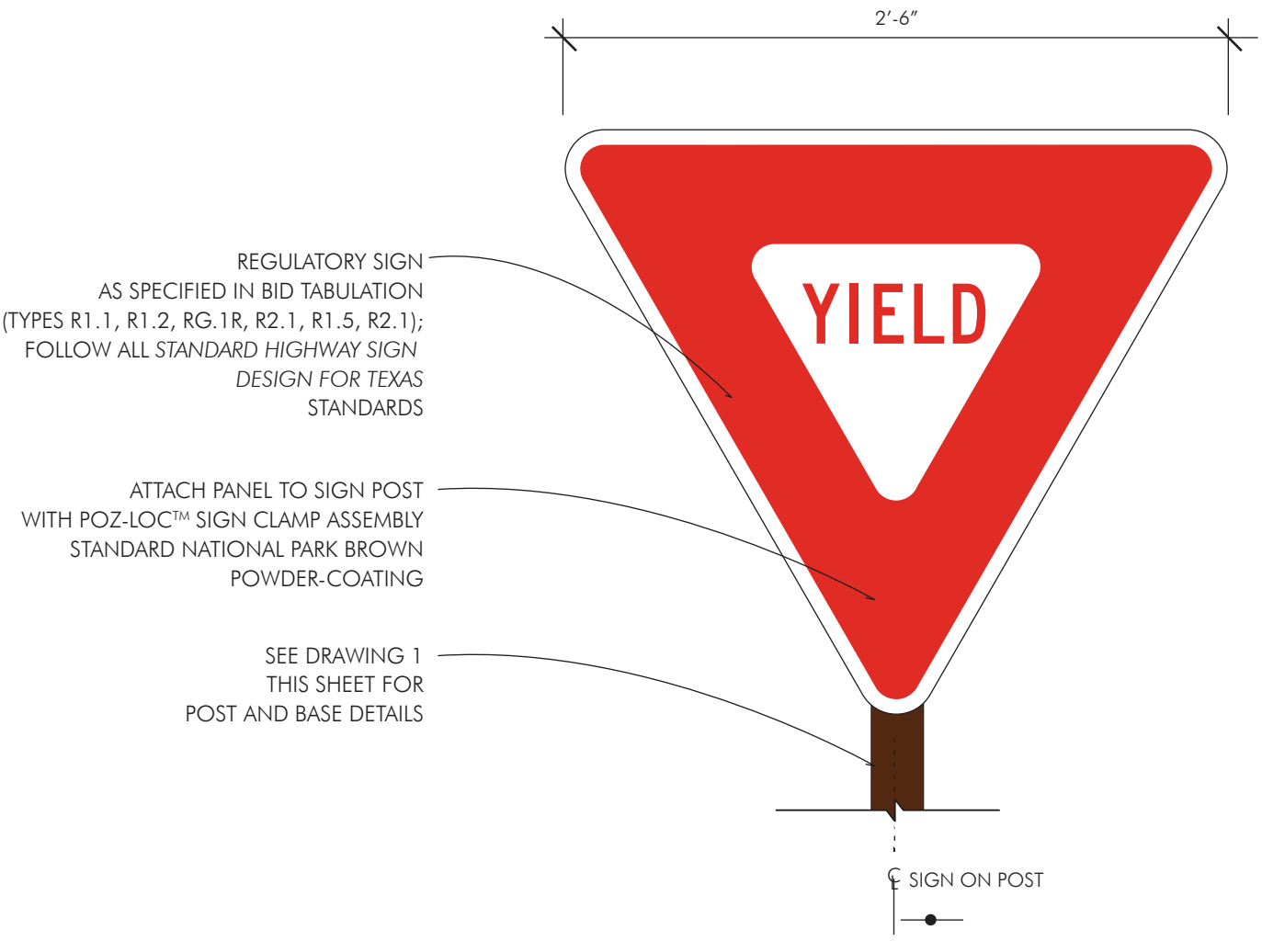
2 PP.1: SIGN FACE DETAIL  
1 1/2" = 1'-0"



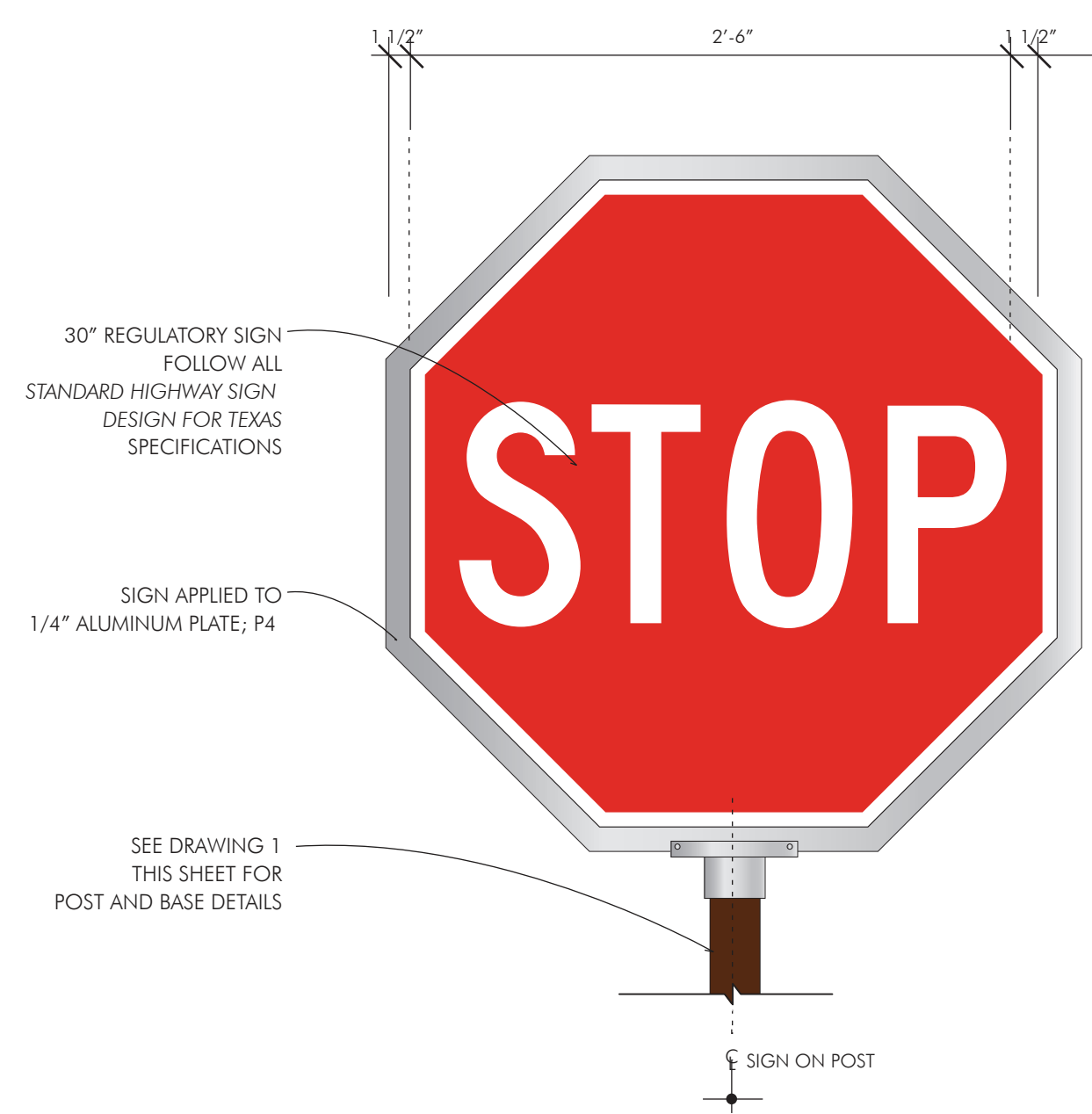
3 PP.1: SIGN BACK FACE DETAIL  
1 1/2" = 1'-0"



4 PP.1: SIGN SIDE ELEVATION DETAIL  
1 1/2" = 1'-0"



5 REGULATORY SIGN POST ATTACHMENT  
1 1/2" = 1'-0"



6 R1.1: SIGN FACE DETAIL  
1 1/2" = 1'-0"

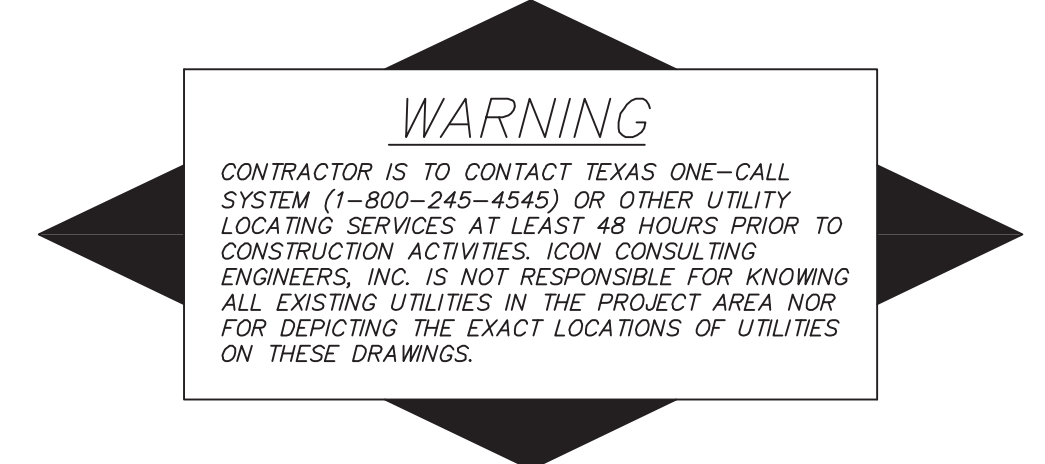


7 R1.1: SIGN BACK FACE DETAIL  
1 1/2" = 1'-0"



8 R1.2: SIGN FACE DETAIL  
1 1/2" = 1'-0"

**100% DESIGN INTENT DRAWINGS. NOT INTENDED FOR CONSTRUCTION.**  
These drawings are intended to convey design intent only. Final engineering, materials, and fabrication shall remain the responsibility of the Fabricator to ensure quality fit and finish for all components.  
Colors are shown for reference only, and are subject to the limitations of the printing process. Refer to finish samples and/or color system swatches for accurate reference.  
Messages shown in the drawings are for reference only. Refer to Message Schedule for actual messages required for each sign location.



BM #1 REF. ELEVATION = 559.47  
SQUARE CUT IN TOP OF CURB, SOUTH MEDIAN  
END NOSE, MARSH LANE  
1127' NORTH OF VITRUVIAN WAY.  
BM #2 REF. ELEVATION = 547.84  
SQUARE CUT IN TOP OF CURB, NORTH MEDIAN  
END NOSE, AT INTERSECTION OF  
VITRUVIAN WAY AND MARSH LANE.

NO.	REVISION	BY	DATE		
TOWN OF ADDISON DALLAS COUNTY, TEXAS PARK AND STREETScape IMPROVEMENTS VITRUVIAN PARK PARK SIGNAGE DESIGN INTENT PLANS AND ELEVATIONS					
175 Toyota Plaza, Suite 600 Memphis, Tennessee 38103 Telephone 901.521.1440 Fax 901.525.2760 Internet www.lrk.com © 2010 Looney Ricks Kiss Architects, Inc. All Rights Reserved.					
PROJECT	DESIGN	DRAWN	DATE	FILE	SHEET
5029-01	LR	LR	APR 26, 2010	LRK 0109107-G204	G204

PARK AND STREETScape IMPROVEMENTS - VITRUVIAN PARK