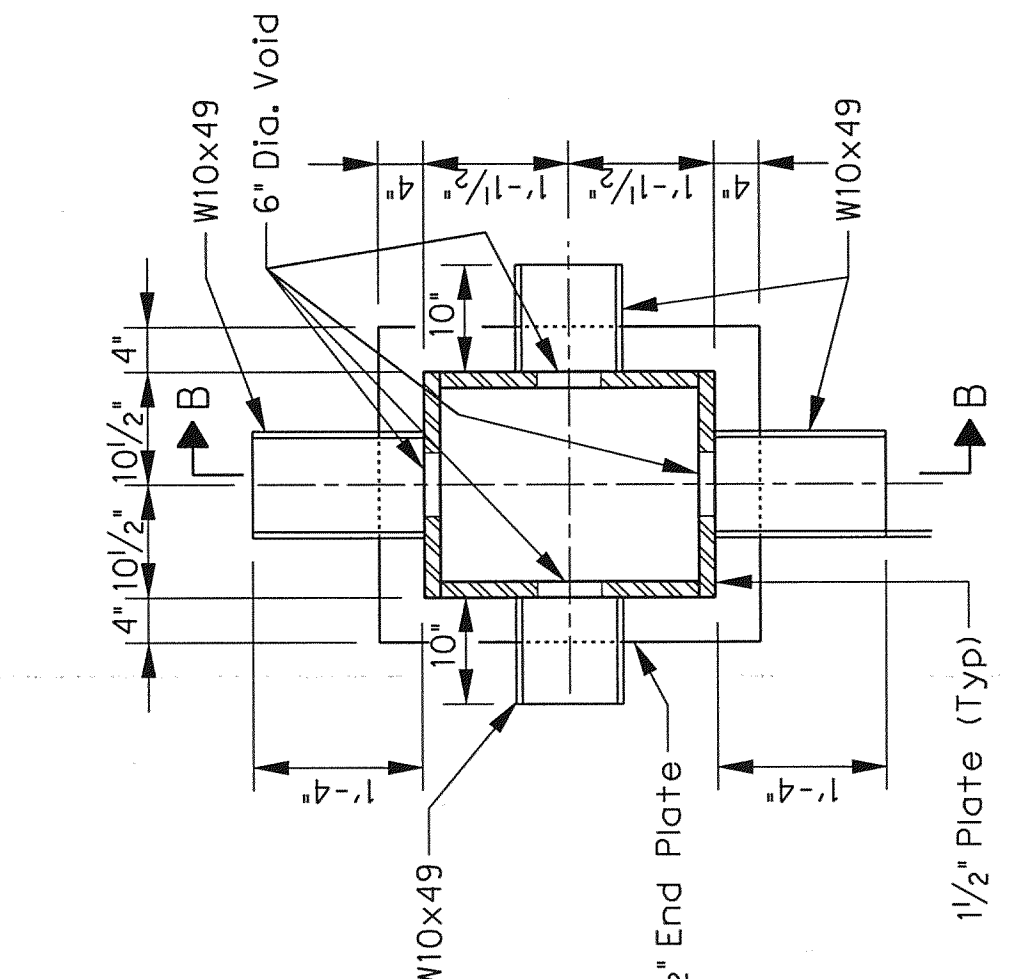


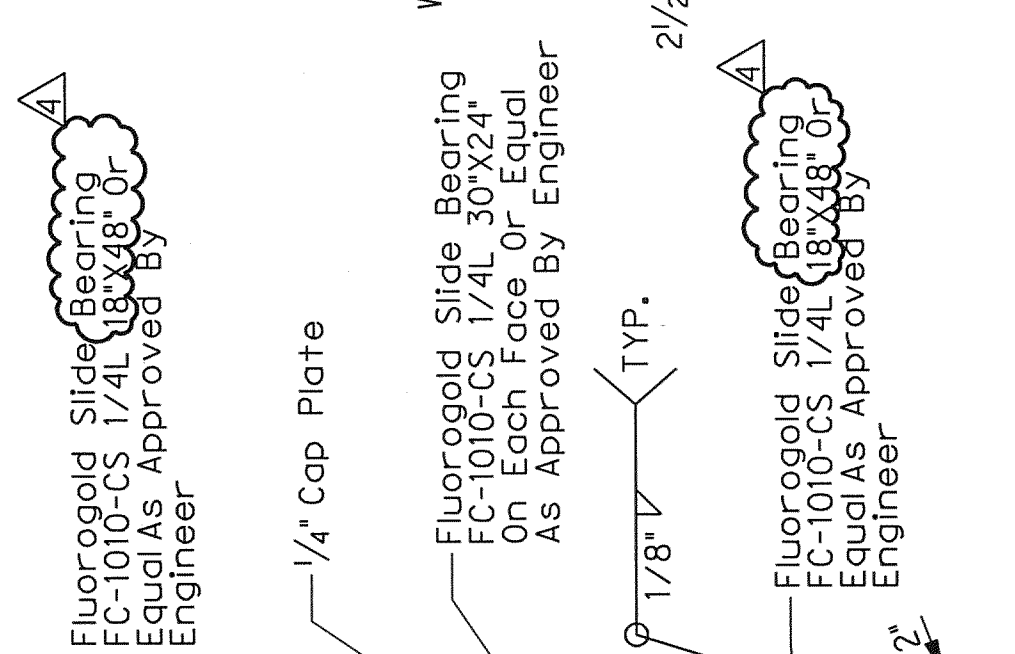
EMBED ANCHOR ELEVATION
SCALE: 3/4" = 1'-0"

Note: Slide bearings to be installed at time of arch erection.

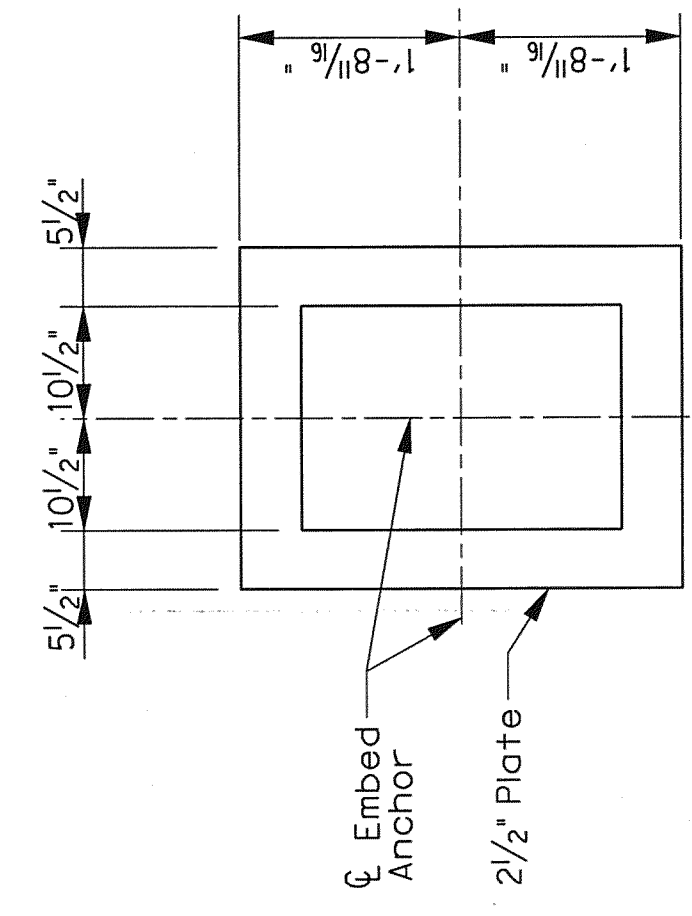
2 1/2" x 2'-5" x 2'-11" End Plate
W10x49
6" Dia. Void (Typ)
2 1/2" Face Plate
Face Of Abut
1/4" Cap Plate
Fluorogold Slide Bearing FC-1010-CS 1/4L 18x48
As Approved By Engineer
1/8" TYP.
Fluorogold Slide Bearing FC-1010-CS 1/4L 18x48
As Approved By Engineer



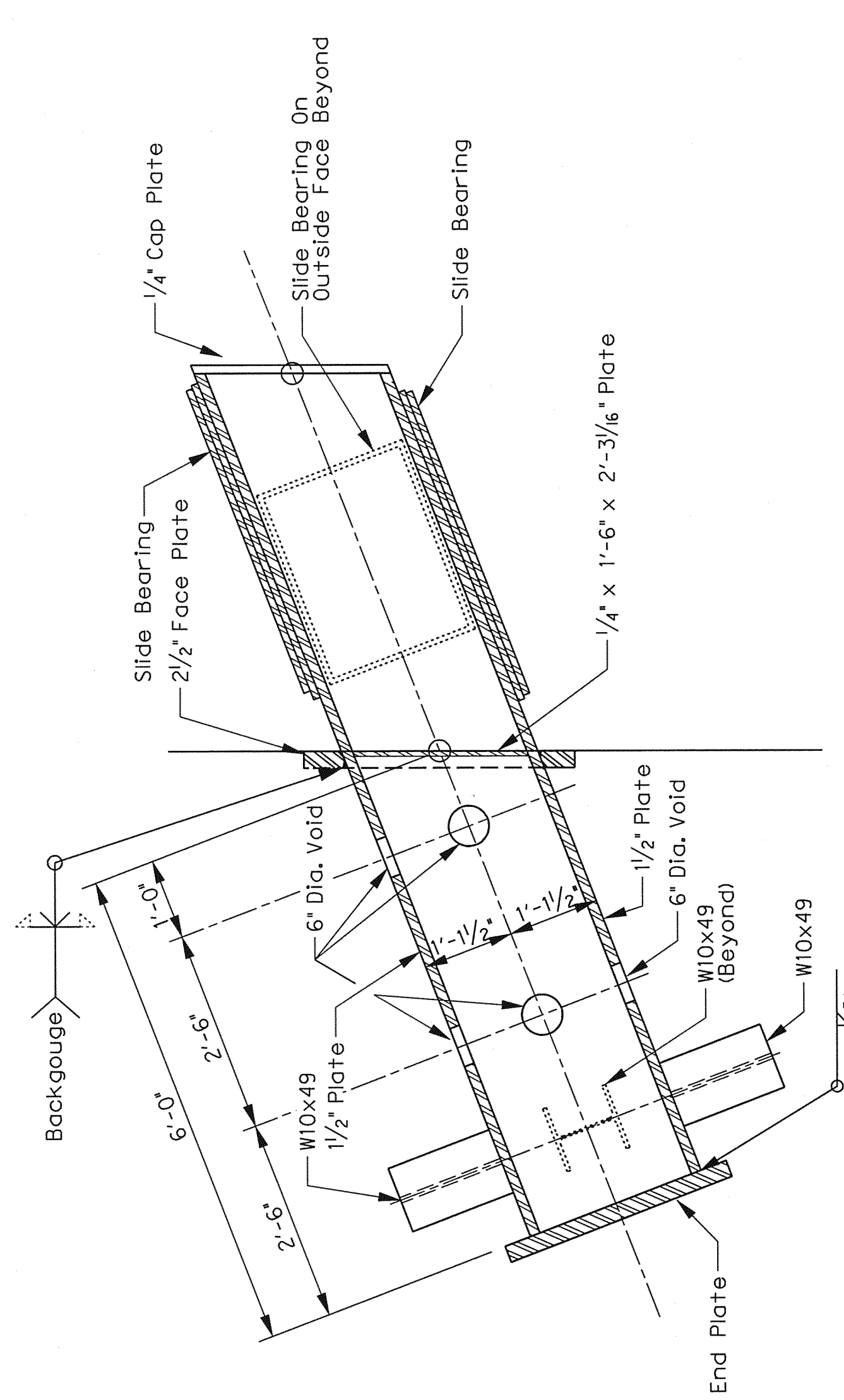
SECTION A-A
SCALE: N.T.S.



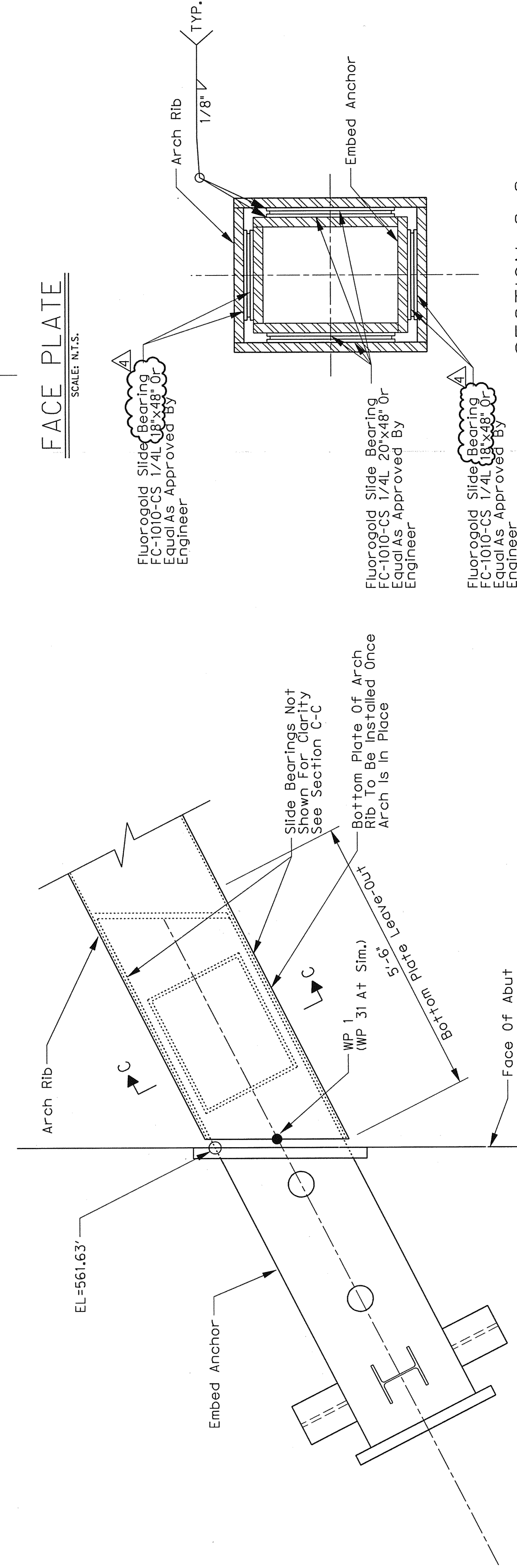
FACE PLATE
SCALE: N.T.S.



SECTION B-B
SCALE: 3/4" = 1'-0"



SECTION C-C
SCALE: N.T.S.



Note: Do not weld arch to embed anchor.

ARCH / EMBED ANCHOR CONNECTION
SCALE: 3/4" = 1'-0"



THE SEAL APPEARING ON THIS DOCUMENT WAS ISSUED ON 07-28-2010. ALTERATION OF A SEALED DOCUMENT WITHOUT THE SIGNATURE OF THE SEALING ENGINEER IS AN OFFENSE UNDER THE TEXAS PROFESSIONAL ENGINEERING ACT. THIS SEALING ENGINEER'S SIGNATURE AND SEAL ARE VALID FOR THE PROJECT DESCRIBED IN THIS DRAWING. SEE THE OFFICE OF HALFF ASSOCIATES, 1201 NORTH BOWSER ROAD, RICHARDSON, TEXAS 75081, TYPE FORM #0322.

NO.	REVISION	BY	DATE
4	ESC	07/28/10	

Addendum #4
 TOWN OF ADDISON
 DALLAS COUNTY, TEXAS
 VITRUVIAN PARK BRIDGES
 BELLA LANE

HALFF 1201 NORTH BOWSER ROAD, RICHARDSON, TEXAS 75081-2275
 TEL (214) 946-6200 FAX (214) 796-0085

PROJECT	DESIGN	DRAWN	DATE	FILE	SHEET
27379	ESC	AHH	APRIL 2010		S2-19