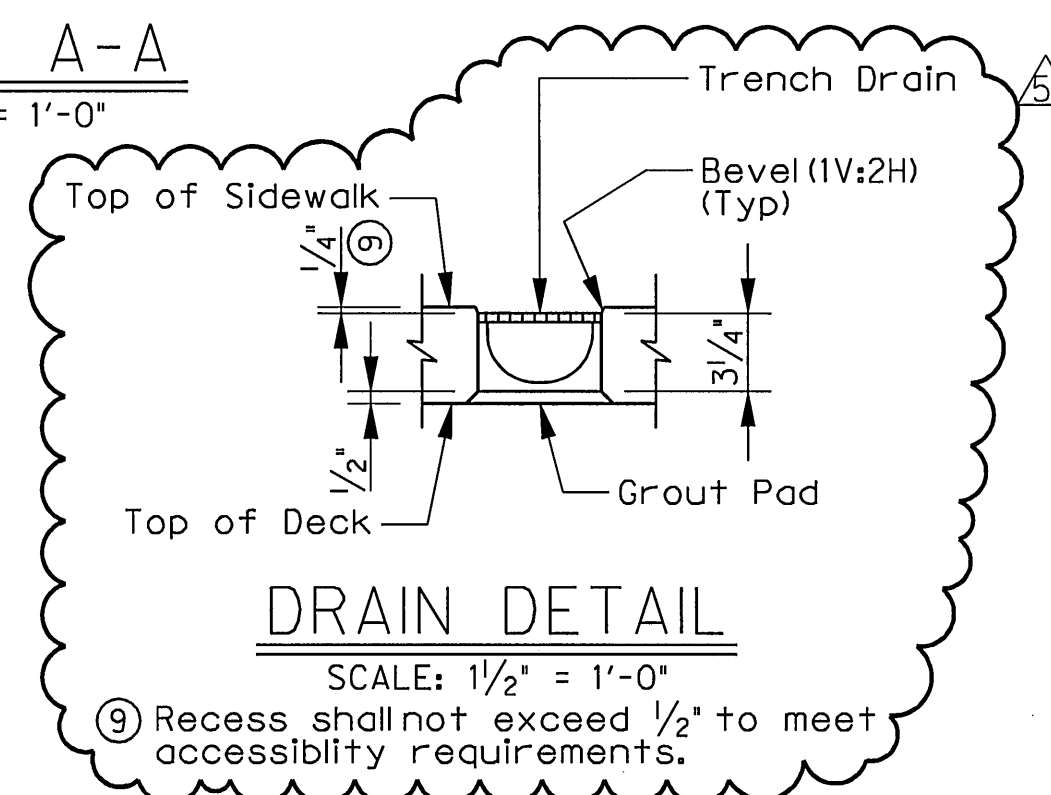


BARS UP

BARS P

SECTION A-A

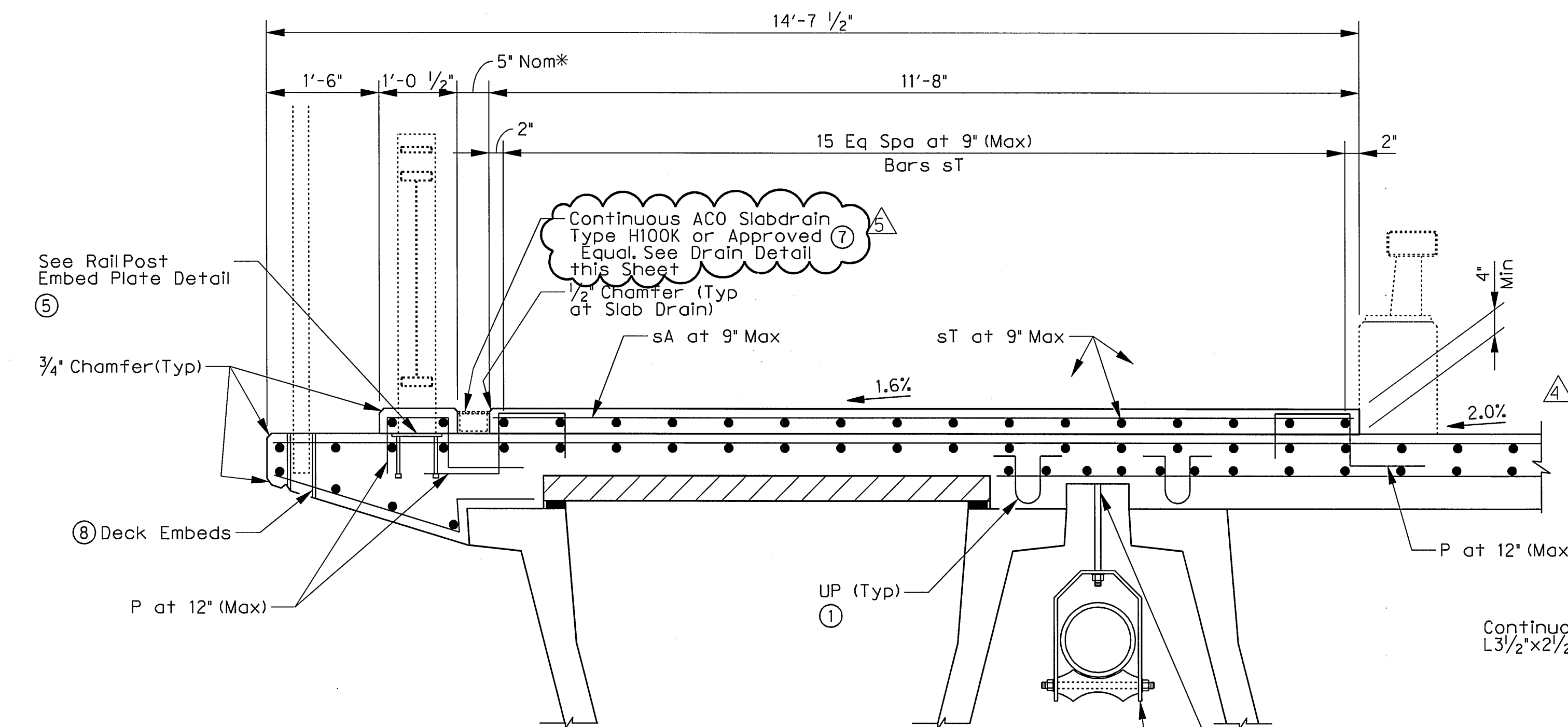
SCALE: 3/8" = 1'-0"



DRAIN DETAIL

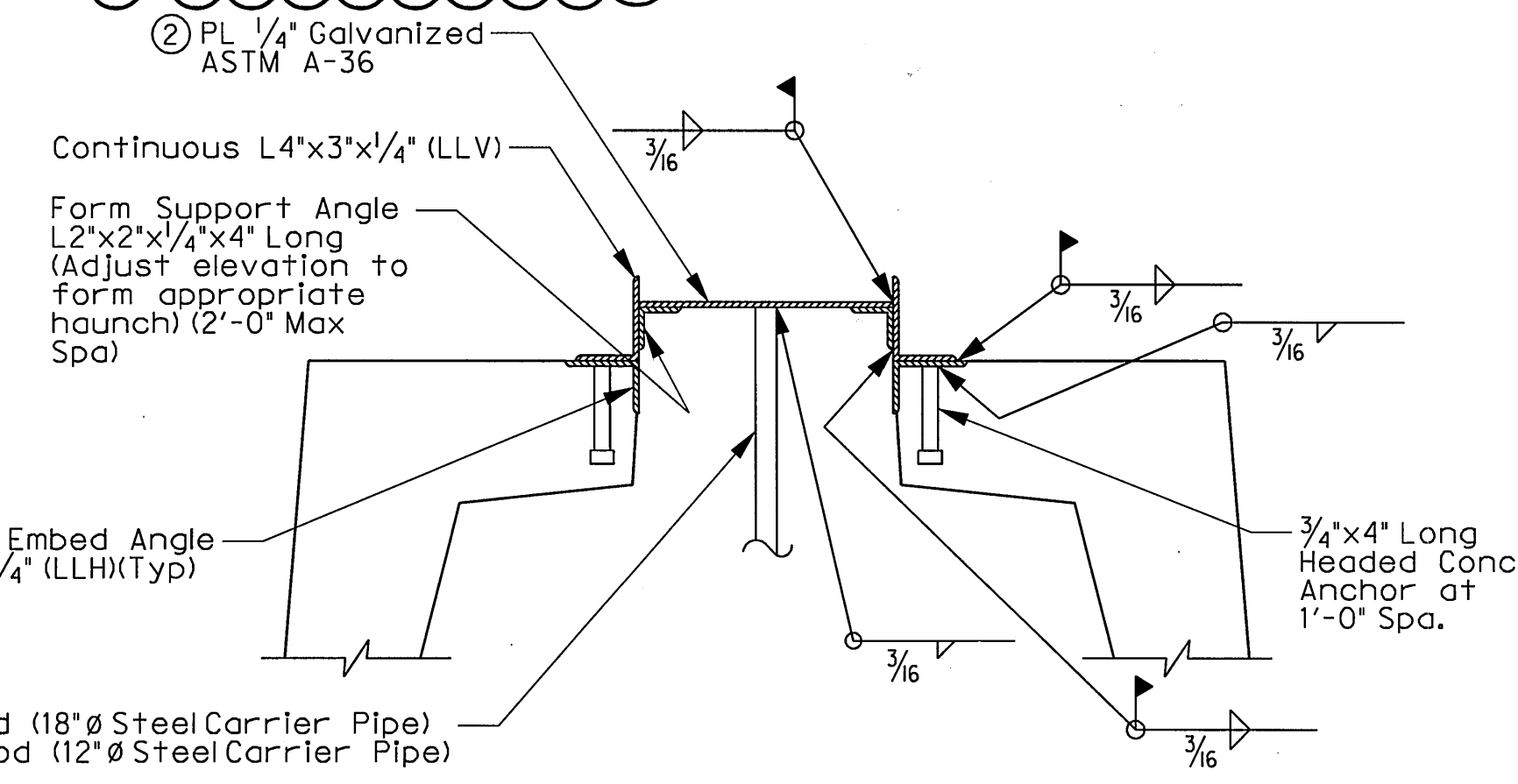
SCALE: 1/2" = 1'-0"

- ① Space bars UP with beam bars R in all areas where measured haunch exceeds 3".
- ② Replace galvanized sheet steel with a 1/4" galvanized steelplate see UBMS standard for galvanized sheet steel detail.
- ③ Copper B-line B3110-18 (18" Ø steel carrier pipe) spaced at 6'-0" Max C.C. Copper B-line B3110-12 (12" Ø steel carrier pipe) spaced at 6'-0" Max C.C. Pipe supports are subsidiary to Steel Pipe Item 442, Misc. Steel.
- ④ See sheet 1 of 2 for table of dimensions.
- ⑤ Leave the bottom 1 inch of post ungalvanized.
- ⑥ 18" Ø steel pipe shall be schedule 40 pipe with 18" O.D. 12" Ø steel pipe shall be schedule 40 with 12" O.D. All steel pipes shall be galvanized.
- ⑦ Use grate Type 4100 or 4120 galvanized steel, or approved equal. The contractor shall submit a sample of the grate prior to installation.
- ⑧ See Drawing No. S1-24 for additional details.



DETAIL A

SCALE: 3/4" = 1'-0"



DETAIL B

SCALE: NTS

* Refer To Manufacturer For Slab Drain Dimensions.



ADDENDUM #5	ESC	8/18/10
ADDENDUM #4	ESC	7/28/10
ADDENDUM #1	ESC	5/14/10
NO.	REVISION	BY DATE

Addison TOWN OF ADDISON
DALLAS COUNTY, TEXAS

VITRUVIAN PARK BRIDGES
PONTE AVENUE

DECK DETAILS

HALFF 1201 NORTH BOWSER ROAD, RICHARDSON, TEXAS 75081-2275
TEL (214) 346-6200 FAX (214) 739-0085

PROJECT	DESIGN	DRAWN	DATE	FILE	SHEET
27379	ESC	AHH	APRIL 2010	-	S1-17