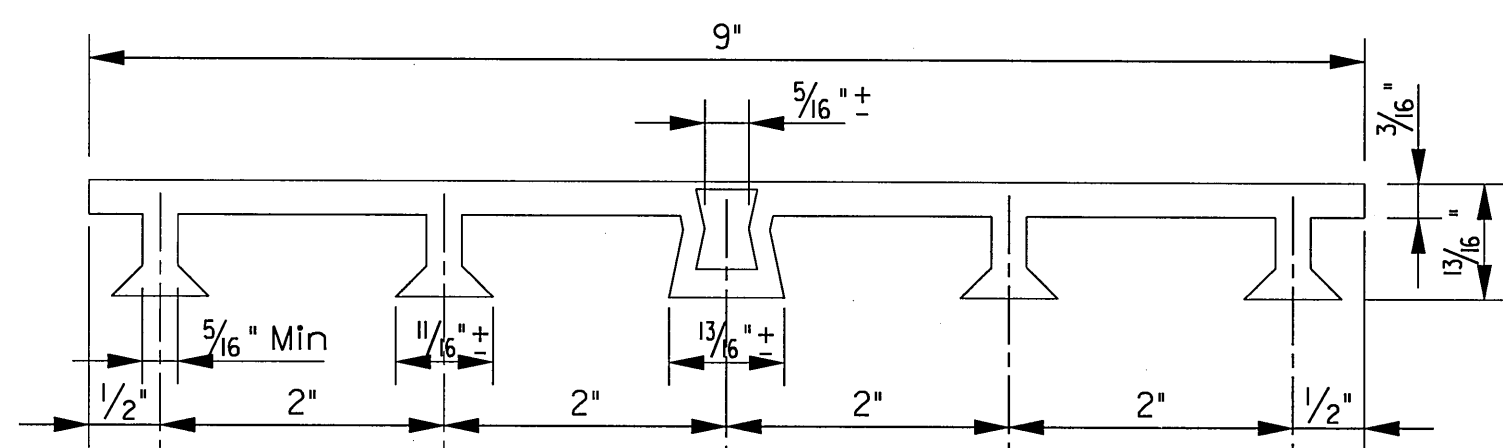


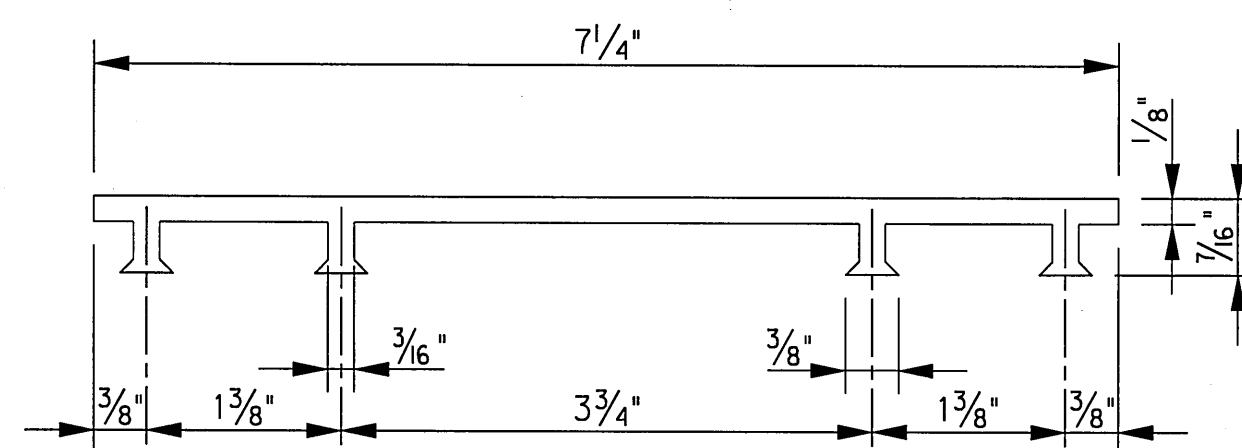
EXPANSION JOINT

CONSTRUCTION JOINT

④ Dowels and joint material shall be provided along all mating concrete surfaces.

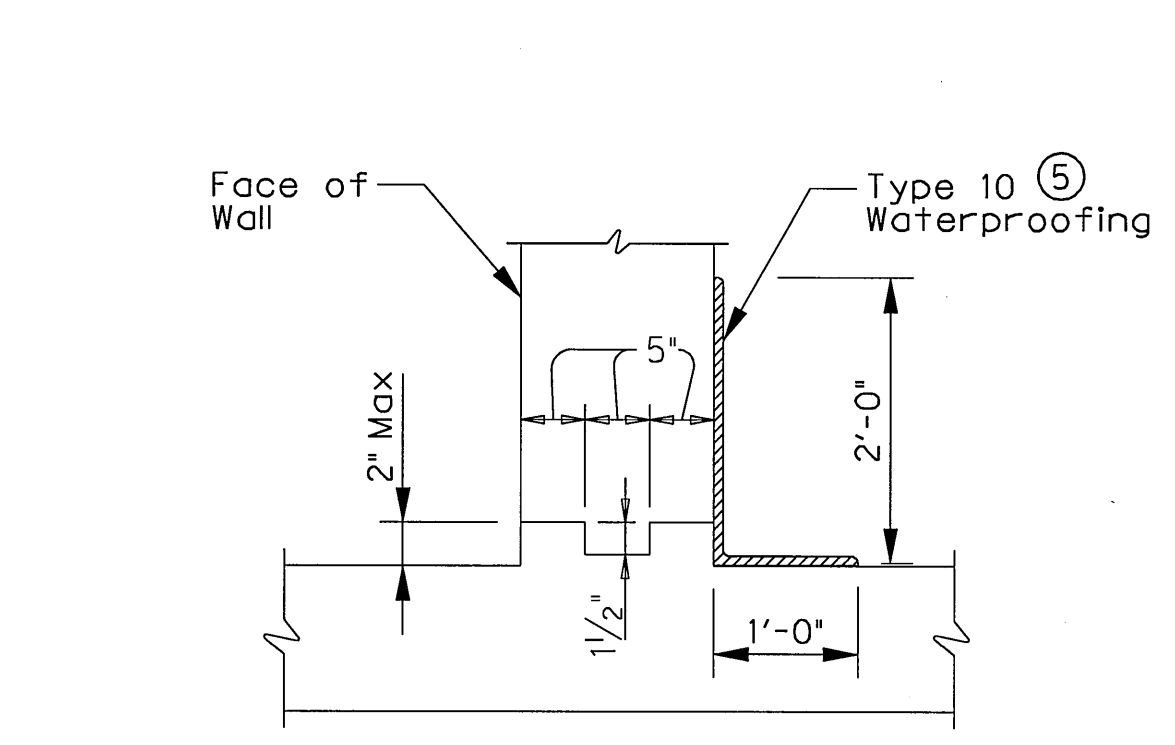


PVC WATERSTOP TYPE "A"

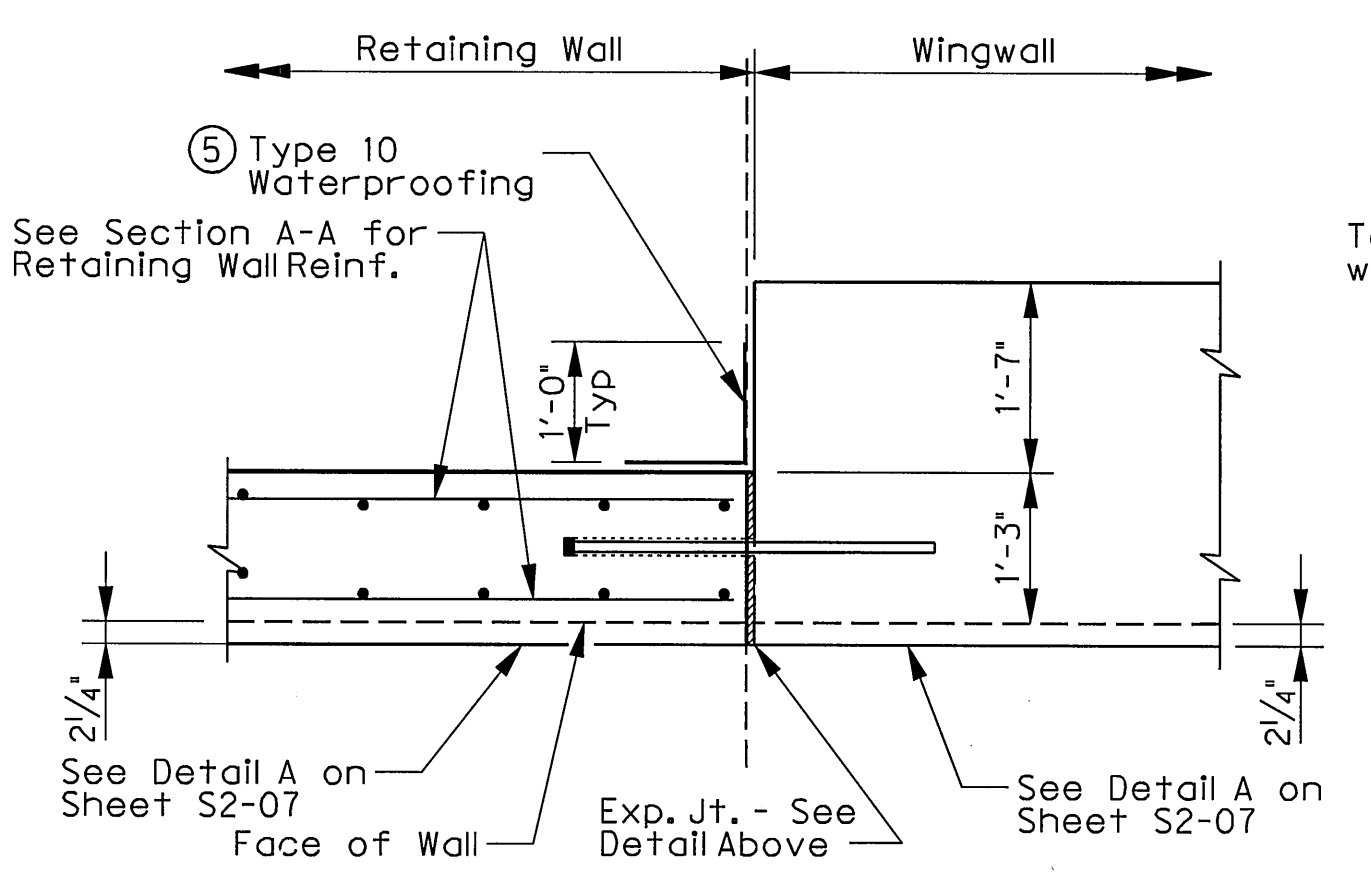


PVC WATERSTOP TYPE "B"

Note: Dimensions and shapes may vary slightly depending on manufacturer.

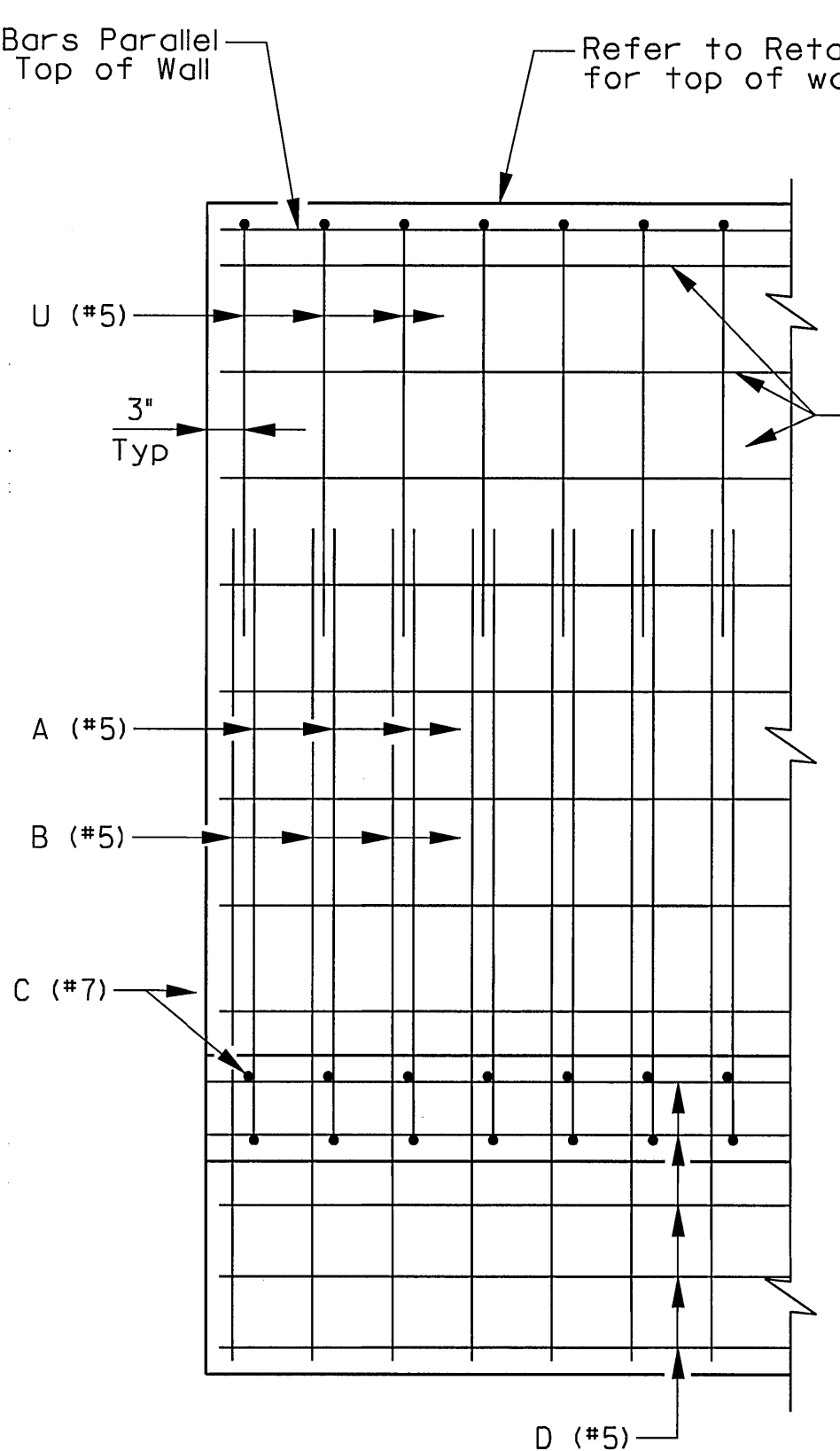
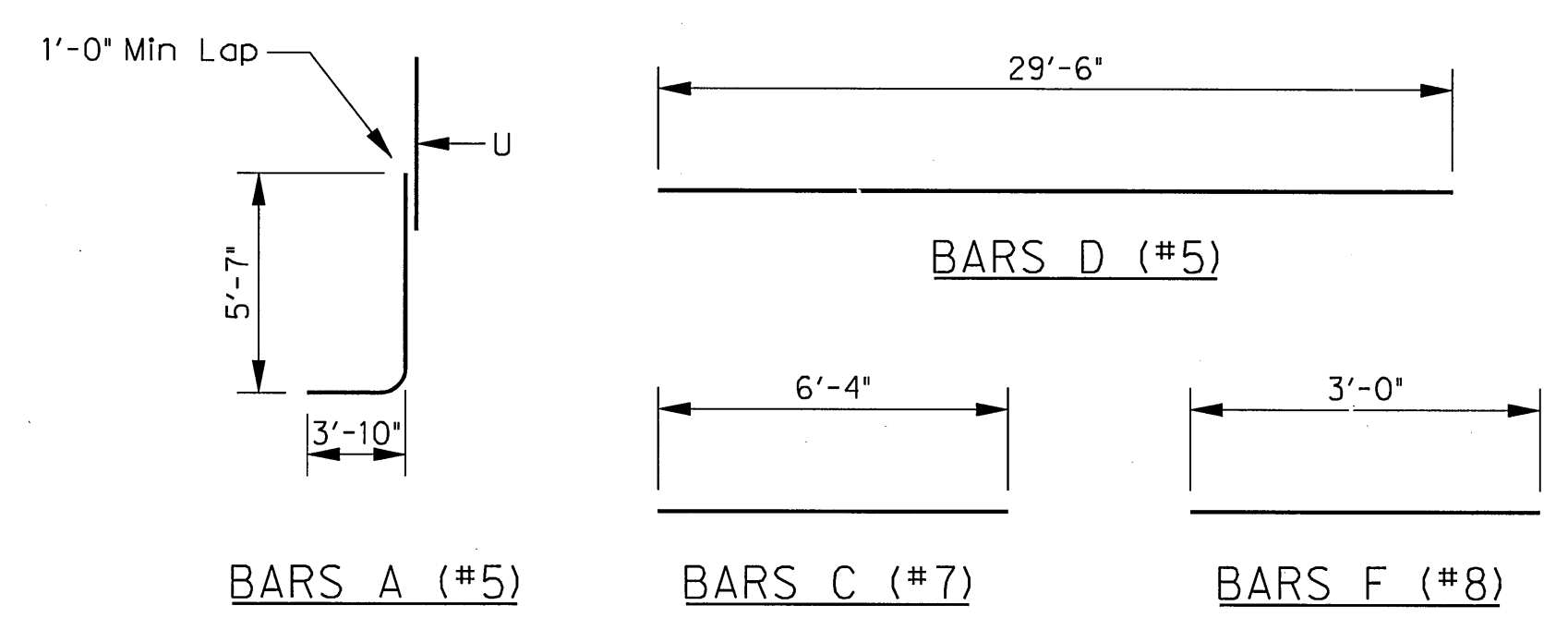


JOINT AND WATERSTOP DETAIL

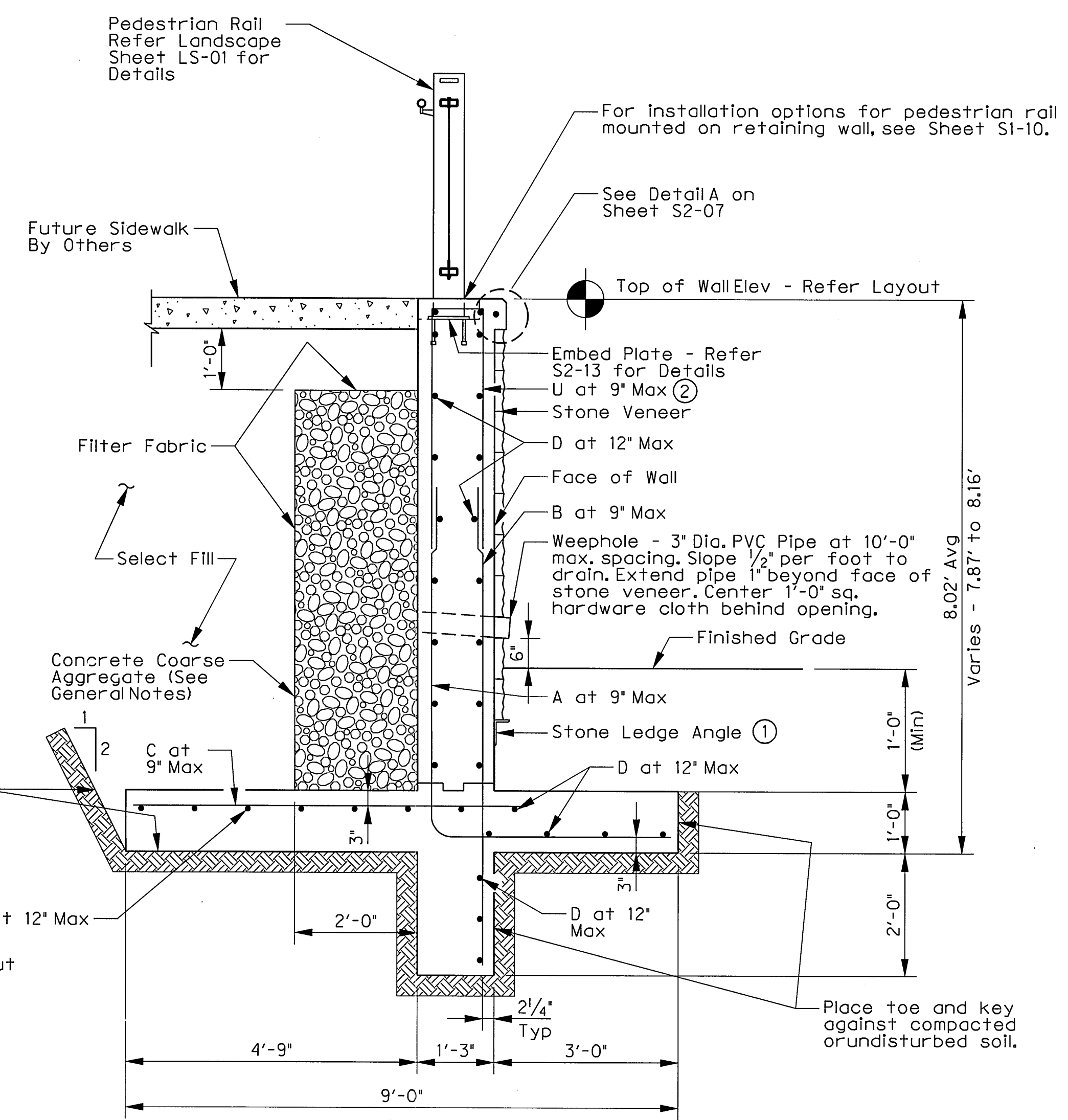


EXPANSION JOINT AT WINGWALL

⑤ See Item 458 in TxDOT specifications.



PARTIAL WALL DETAIL



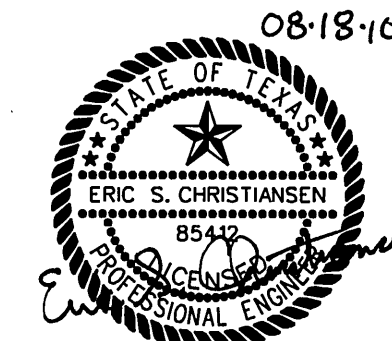
SECTION A-A

- ① Stone ledge angle shall be L5x3x1/4 with 1/2 inch diameter Hi-Tek Bolt 3 expansion anchors embedded a minimum of 3 1/2 inches and spaced at 1'-6" c-c. Refer to Landscape Sheets for location of stone veneer and stone ledges.
- ② U bars located at railpost connection shall be lowered to accommodate railpost embed plates and block-outs.

ESTIMATED QUANTITIES

Item	Unit	QUANTITY
③ C/C Conc Retaining Wall	CY	60.1
③ Reinf Steel	LB	5,480

③ For contractor's information only.



THE SEAL APPEARING ON THIS DOCUMENT WAS AUTHORIZED BY ERIC S. CHRISTENSEN, P.E. #95422 ON 08-18-2010. ALTERATION OF A SEALED DOCUMENT WITHOUT PROPER NOTIFICATION TO THE RESPONSIBLE ENGINEER IS AN OFFENSE UNDER THE TEXAS ENGINEERING PRACTICE ACT. THE RECORD COPY OF THIS DRAWING IS ON FILE AT THE OFFICES OF HALFF ASSOCIATES, 1201 NORTH BOWSER ROAD, RICHARDSON, TEXAS, 75081. TDFE FIRM #F-312.

Addendum #5		ESC	08/18/10
REVISION		BY	DATE
TOWN OF ADDISON DALLAS COUNTY, TEXAS			
VITRUVIAN PARK BRIDGES BELLA LANE			
RETAINING WALL DETAILS			
HALFF 1201 NORTH BOWSER ROAD, RICHARDSON, TEXAS 75081-2275 TEL (214) 346-6200 FAX (214) 739-0085			
PROJECT	DESIGN	DRAWN	DATE
27379	ESC	AHH	APRIL 2010
FILE	SHEET		
-	S2-23		