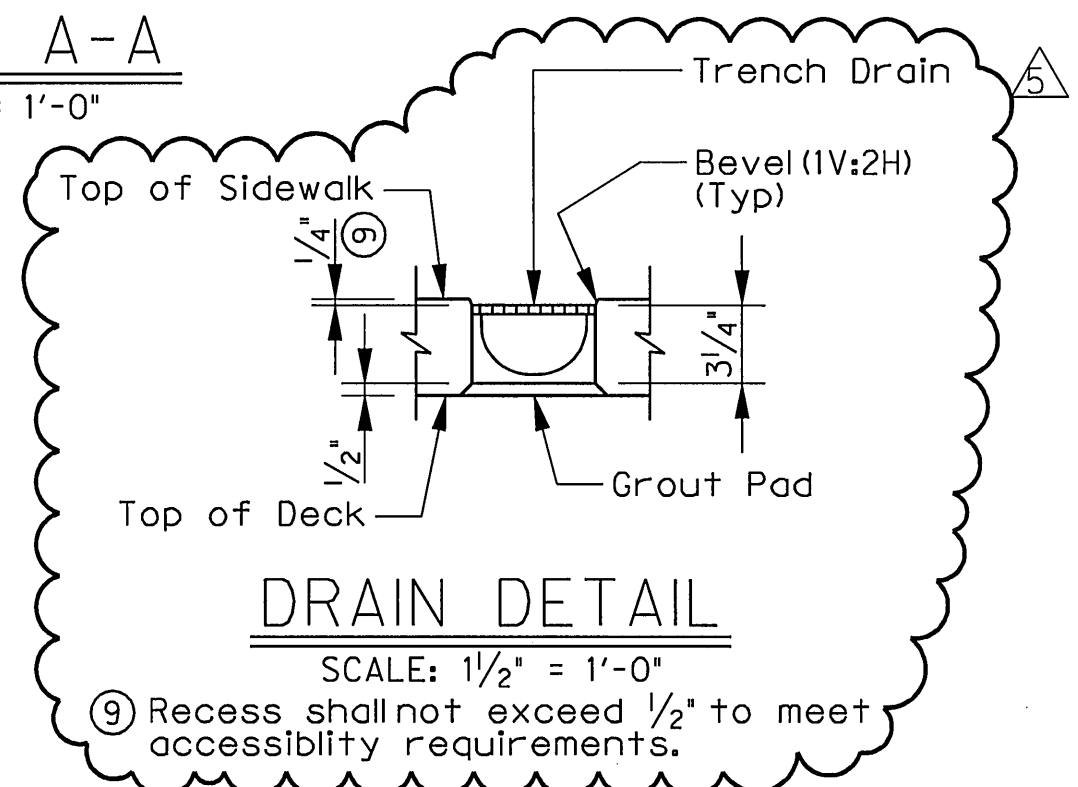


BARS UP

BARS P

SECTION A-A

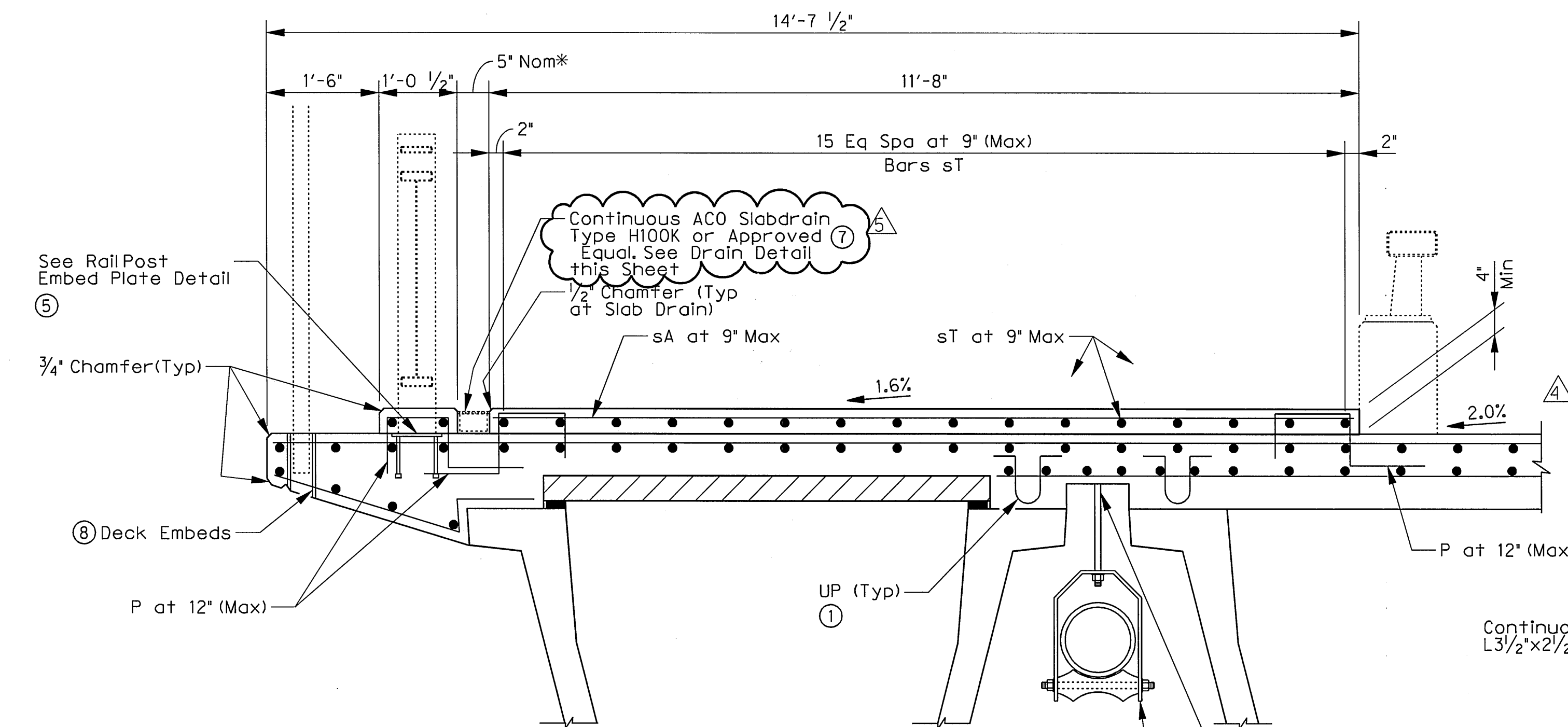
SCALE: 3/8" = 1'-0"



DRAIN DETAIL

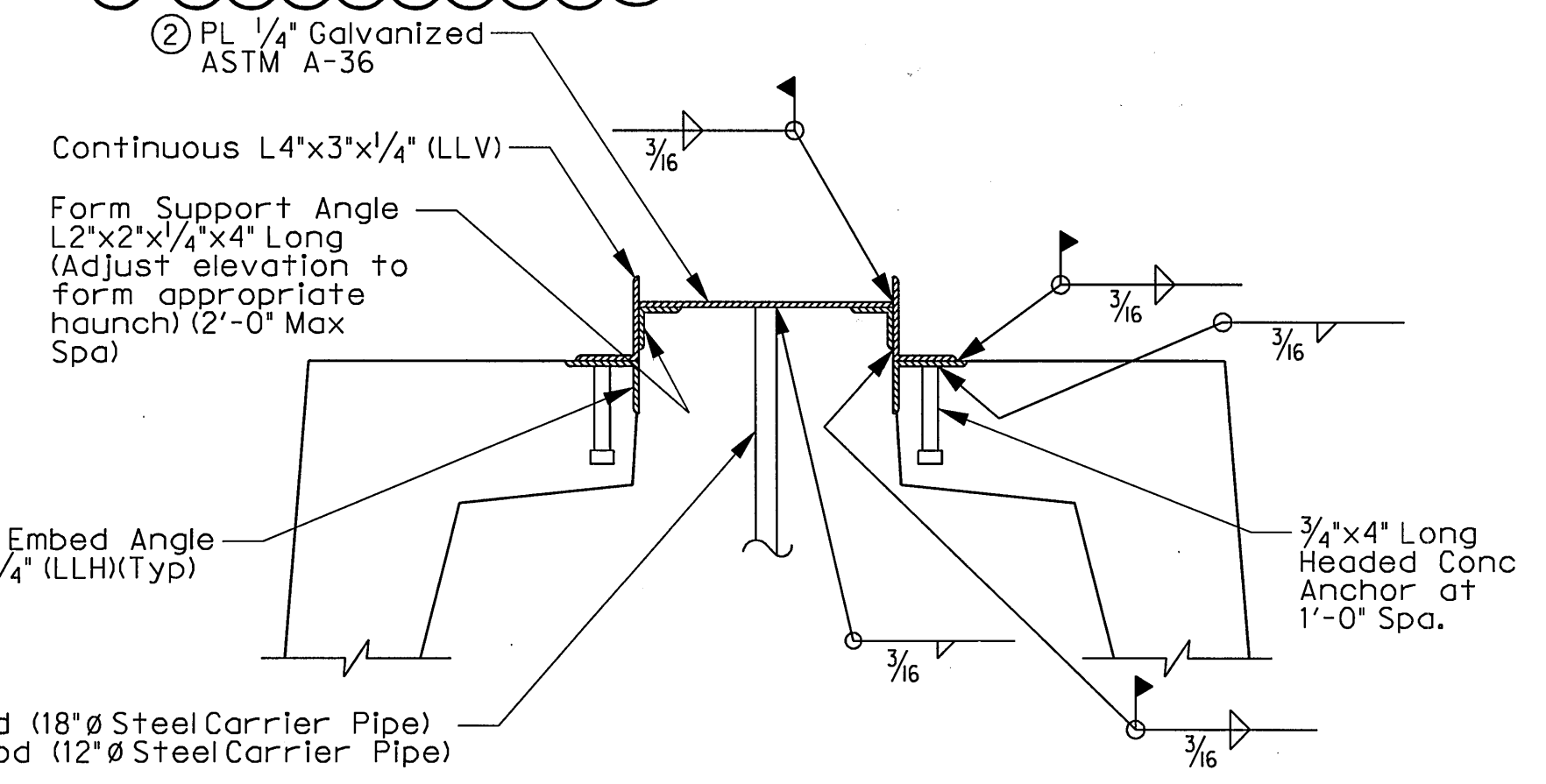
SCALE: 1/2" = 1'-0"

- ① Space bars UP with beam bars R in all areas where measured haunch exceeds 3".
- ② Replace galvanized sheet steel with a 1/4" galvanized steelplate see UBMS standard for galvanized sheet steel detail.
- ③ Copper B-line B3110-18 (18" Ø steel carrier pipe) spaced at 6'-0" Max C.C. Copper B-line B3110-12 (12" Ø steel carrier pipe) spaced at 6'-0" Max C.C. Pipe supports are subsidiary to Steel Pipe Item 442, Misc. Steel.
- ④ See sheet 1 of 2 for table of dimensions.
- ⑤ Leave the bottom 1 inch of post ungalvanized.
- ⑥ 18" Ø steel pipe shall be schedule 40 pipe with 18" O.D. 12" Ø steel pipe shall be schedule 40 with 12" O.D. All steel pipes shall be galvanized.
- ⑦ Use grate Type 4100 or 4120 galvanized steel, or approved equal. The contractor shall submit a sample of the grate prior to installation.
- ⑧ See Drawing No. S1-24 for additional details.



DETAIL A

SCALE: 3/4" = 1'-0"



DETAIL B

SCALE: NTS

* Refer To Manufacturer For Slab Drain Dimensions.



ADDENDUM #5	ESC	8/18/10
ADDENDUM #4	ESC	7/28/10
ADDENDUM #1	ESC	5/14/10
NO.	REVISION	BY DATE

ADDISON TOWN OF ADDISON
DALLAS COUNTY, TEXAS

VITRUVIAN PARK BRIDGES
PONTE AVENUE

DECK DETAILS

HALFF 1201 NORTH BOWSER ROAD, RICHARDSON, TEXAS 75081-2275
TEL (214) 346-6200 FAX (214) 739-0085

PROJECT	DESIGN	DRAWN	DATE	FILE	SHEET
27379	ESC	AHH	APRIL 2010	-	S1-17

USER: ah2140

OFFICE: RCH

PROJECT # 27379

FILE: 27379-SC-BELLABL-AB01-01.dgn

TIME: 2:16:28 PM

DATE: 8/18/2010

BAR SCHEDULE ~ ONE CAP

Bar	Type	No.	Size	Length	Weight	
A	S+	28	#11	58'-1"	8,641	
H	S+	8	#6	57'-8"	693	
L1	B+	12	#6	5'-0"	91	
L2	B+	24	#6	12'-6"	451	
S1	B+	55	#5	18'-2"	1,043	
V	B+	59	#5	9'-2 1/2"	567	
wH1	S+	22	#6	21'-2"	700	
wH2	S+	38	#6	10'-2"	581	
wH3	S+	22	#6	10'-8"	353	
wU	B+	26	#8	26'-2 1/2"	1,820	
wV1	S+	24	#8	11'-8 3/4"	752	
wV2	S+	24	#6	9'-8 3/4"	351	
wZ	B+	22	#6	6'-2 1/2"	206	
① Total Reinforcing Steel					LB	16,250
C/C Conc (Abut)					CY	47.9
C/C Conc (Mass Placement)					CY	72.5

ESTIMATED QUANTITIES

Item	Unit	QUANTITY
Drilled Shaft (48 IN)	FT	44
Drilled Shaft (30 IN)	FT	150
C/C Conc (Abut)	CY	47.9
C/C Conc (Mass Placement)	CY	72.5
Reinf Steel	LB	16,250

① For contractor's information only.

General Notes:

Designed per AASHTO LRFD Bridge Design Specifications (2007) with interim specifications thereto.

Concrete strength $f'c = 3,600$ psi.

The price bid per foot of Drilled Shaft shall include the reinforcing extending from the shaft into the cap.

Spiral steel shall have one extra turn at the top, bottom and at splices.

All cap and wall reinforcing shall be grade 60 steel.

Drilled shaft reinforcing may be grade 40.

Calculated drilled shaft foundation load is as follows:
146 tons per shaft (48")
104 tons per shaft (30")



THE SEAL APPEARING ON THIS DOCUMENT WAS AUTHORIZED BY ERIC S. CHRISTIANSEN, P.E. #5412 ON 08-18-2010. ALTERATION OF A SEALED DOCUMENT WITHOUT PROPER NOTIFICATION TO THE RESPONSIBLE ENGINEER IS AN OFFENSE UNDER THE TEXAS ENGINEERING PRACTICE ACT. THE RECORD COPY OF THIS DRAWING IS ON FILE AT THE OFFICES OF HALFF ASSOCIATES, 1201 NORTH BOWSER ROAD, RICHARDSON, TEXAS 75081-1996, FIRM #2-312.

NO.	REVISION	BY	DATE
①	Addendum #5	ESC	08/18/10
②	Addendum #4	ESC	07/28/10
③	Addendum #3	ESC	05/24/10
④	Addendum #2	ESC	05/19/10

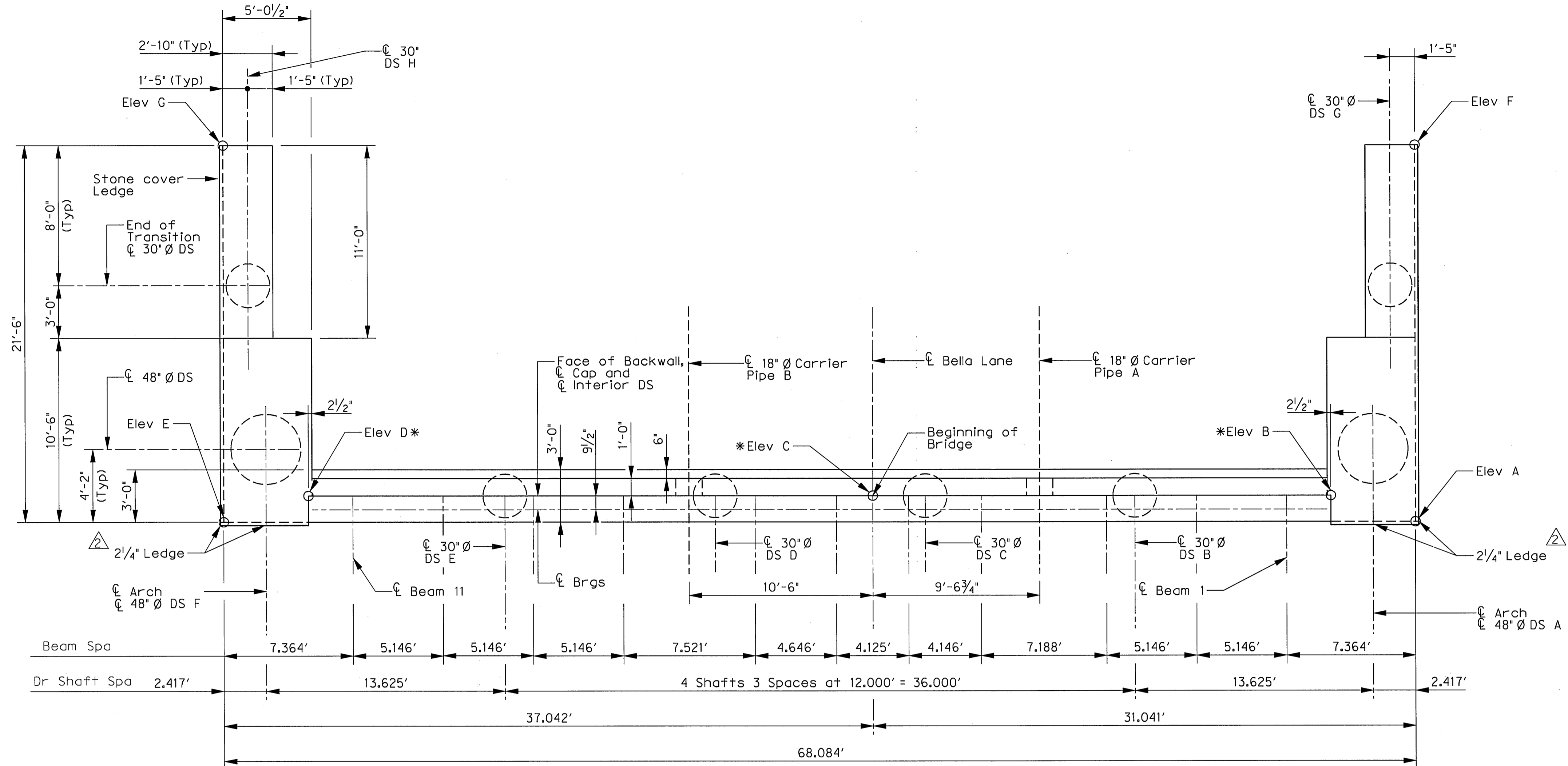
ADDISON TOWN OF ADDISON DALLAS COUNTY, TEXAS

VITRUVIAN PARK BRIDGES BELLA LANE

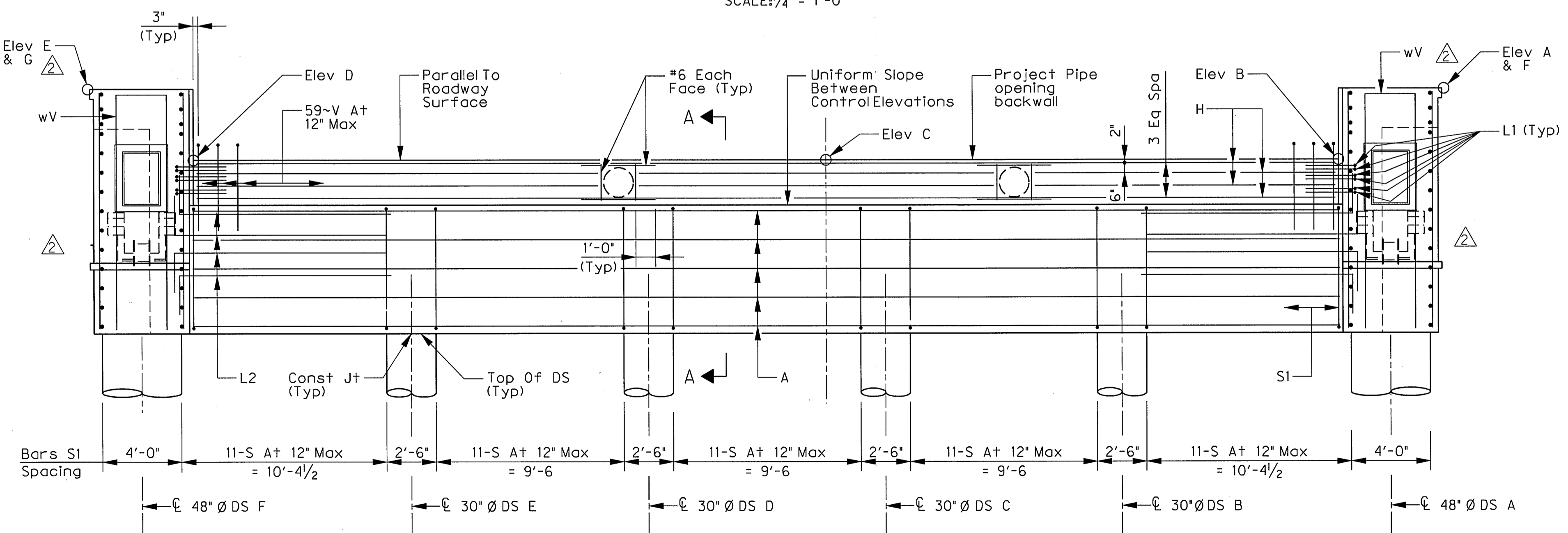
ABUTMENT No. 1 PLAN AND ELEVATION

HALFF 1201 NORTH BOWSER ROAD, RICHARDSON, TEXAS 75081-2275 TEL (214) 346-6200 FAX (214) 738-0095

PROJECT	DESIGN	DRAWN	DATE	FILE	SHEET
27379	ESC	AHH	APRIL 2010	-	S2-04



PLAN SCALE: 1/4" = 1'-0" *Denotes elevation taken at top, frontface of backwall along centerline of abutment.



ELEVATION SCALE: 1/4" = 1'-0"

Note: For information not shown see Section A-A/S2-07

CONTROL ELEVATIONS

Abutment	Station	Top of Abutment						Top of Drilled Shafts								
		Elev A	Elev B	Elev C	Elev D	Elev E	Elev F	DS A	DS B	DS C	DS D	DS E	DS F	DS G	DS H	
1	28+58.50	564.94	561.34	561.87	561.23	564.84	563.45	563.35	552.54	552.80	553.04	552.92	552.68	552.42	552.48	552.36

USER: ah2140

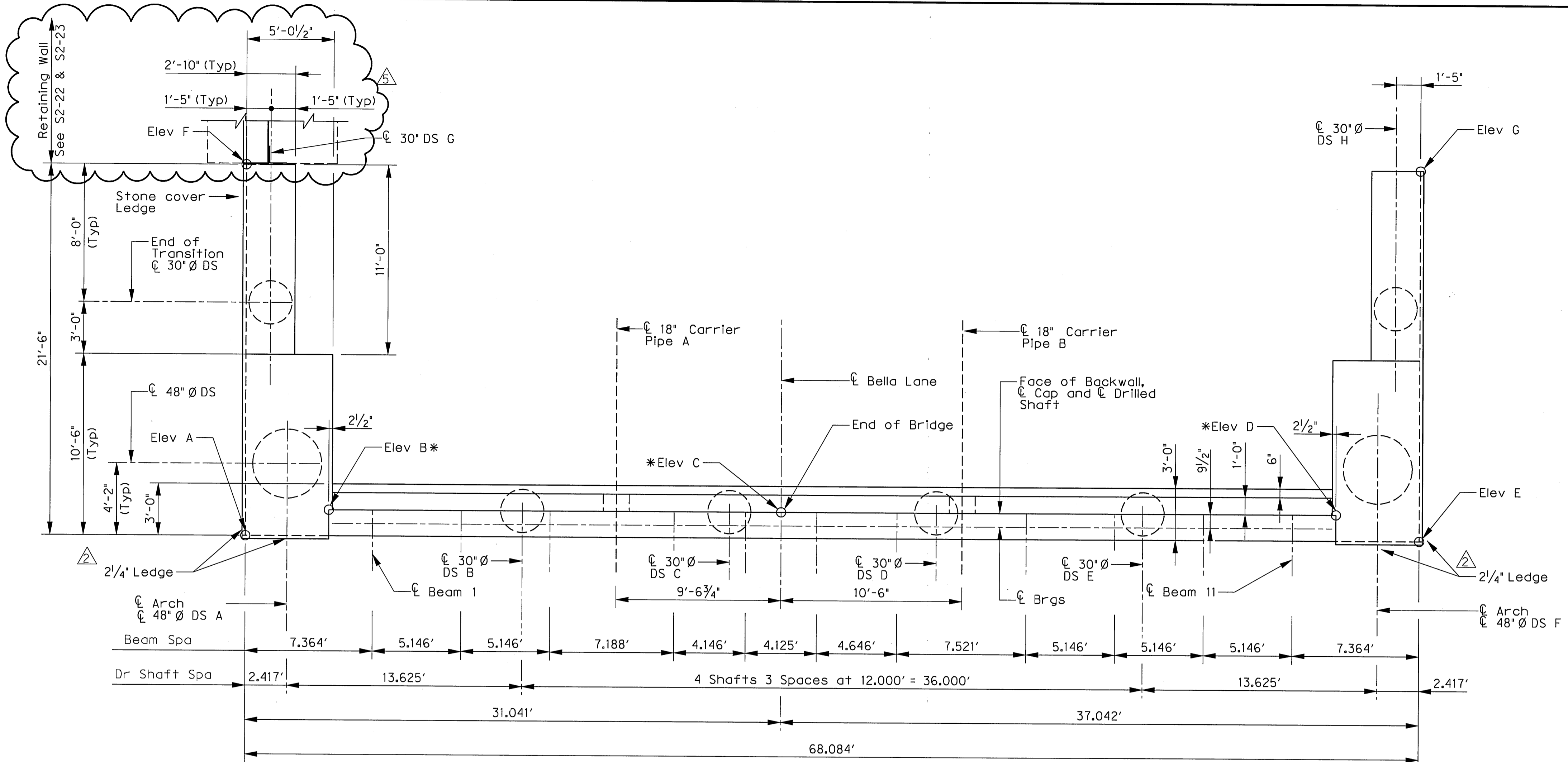
OFFICE: RCH

PROJECT # 27379

FILE: 27379-SC-BELLABL-AB01-02.dgn

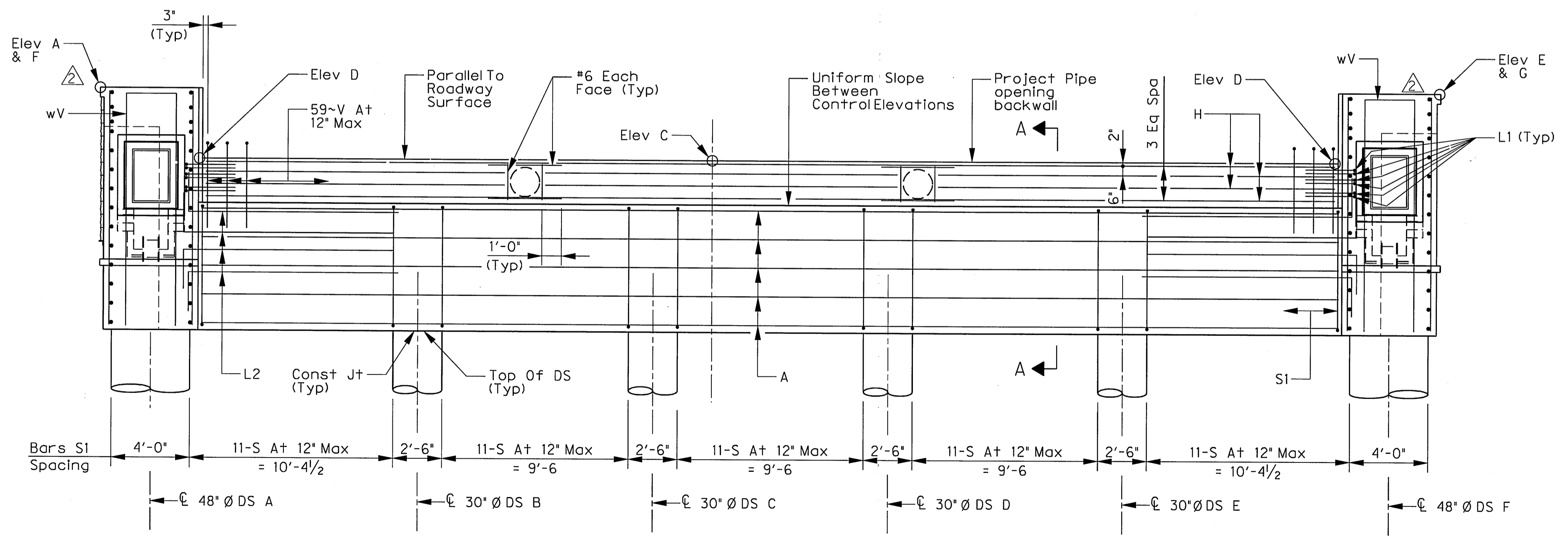
TIME: 2:16:43 PM

DATE: 8/18/2010



PLAN
SCALE: 1/4" = 1'-0"

*Denotes elevation taken at top, frontface of backwall along centerline of abutment.



ELEVATION
SCALE: 1/4" = 1'-0"

Note: For information not shown see Section A-A/S2-07

CONTROL ELEVATIONS

Abutment	Station	Top of Abutment							Top of Drilled Shafts							
		Elev A	Elev B	Elev C	Elev D	Elev E	Elev F	Elev G	DS A	DS B	DS C	DS D	DS E	DS F	DS G	DS H
4	29+99.50	563.84	560.21	560.74	560.10	563.74	562.01	561.91	551.37	551.67	551.91	551.79	551.55	551.25	551.16	551.04

BAR SCHEDULE ~ ONE CAP

Bar	Type	No.	Size	Length	Weight
A	S+	28	#11	58'-1"	8,641
H	S+	8	#6	57'-8"	693
L1	B+	12	#6	5'-0"	91
L2	B+	24	#6	12'-6"	451
S1	B+	55	#5	18'-2"	1,043
V	B+	59	#5	9'-2 1/2"	567
wH1	S+	22	#6	21'-2"	700
wH2	S+	38	#6	10'-2"	581
wH3	S+	22	#6	10'-8"	353
wU	B+	26	#8	26'-2 1/2"	1,820
wV1	S+	24	#8	11'-8 3/4"	752
wV2	S+	24	#6	9'-8 3/4"	351
wZ	B+	22	#6	6'-2 1/2"	206
① Total Reinforcing Steel				LB	16,250
② CI C Conc (Abut)				CY	47.9
③ CI C Conc (Mass Placement)				CY	72.5

ESTIMATED QUANTITIES

Item	Unit	QUANTITY
Drilled Shaft (48 IN)	FT	44
Drilled Shaft (30 IN)	FT	150
CI C Conc (Abut)	CY	47.9
CI C Conc (Mass Placement)	CY	72.5
Reinf Steel	LB	16,250
Sidewalk Drain Pipe (4')	LF	70

- ① For contractor's information only.
- ② Sidewalk drains are subsidiary to Item 420.



THE SEAL APPEARING ON THIS DOCUMENT WAS AUTHORIZED BY ERIC S. CHRISTIANSEN, P.E. #5412 ON 08-18-2010, ALTERATION OF A SEALED DOCUMENT WITHOUT PROPER NOTIFICATION TO THE RESPONSIBLE ENGINEER IS AN OFFENSE UNDER THE TEXAS ENGINEERING PRACTICE ACT. THE RECORD COPY OF THIS DRAWING IS ON FILE AT THE OFFICES OF HALFF ASSOCIATES, 1201 NORTH BOWSER ROAD, RICHARDSON, TEXAS, 75081, TYPE FIRM #F-312.

NO.	REVISION	BY	DATE
①	Addendum #5	ESC	08/18/10
②	Addendum #4	ESC	07/28/10
③	Addendum #3	ESC	05/24/10
④	Addendum #2	ESC	05/19/10

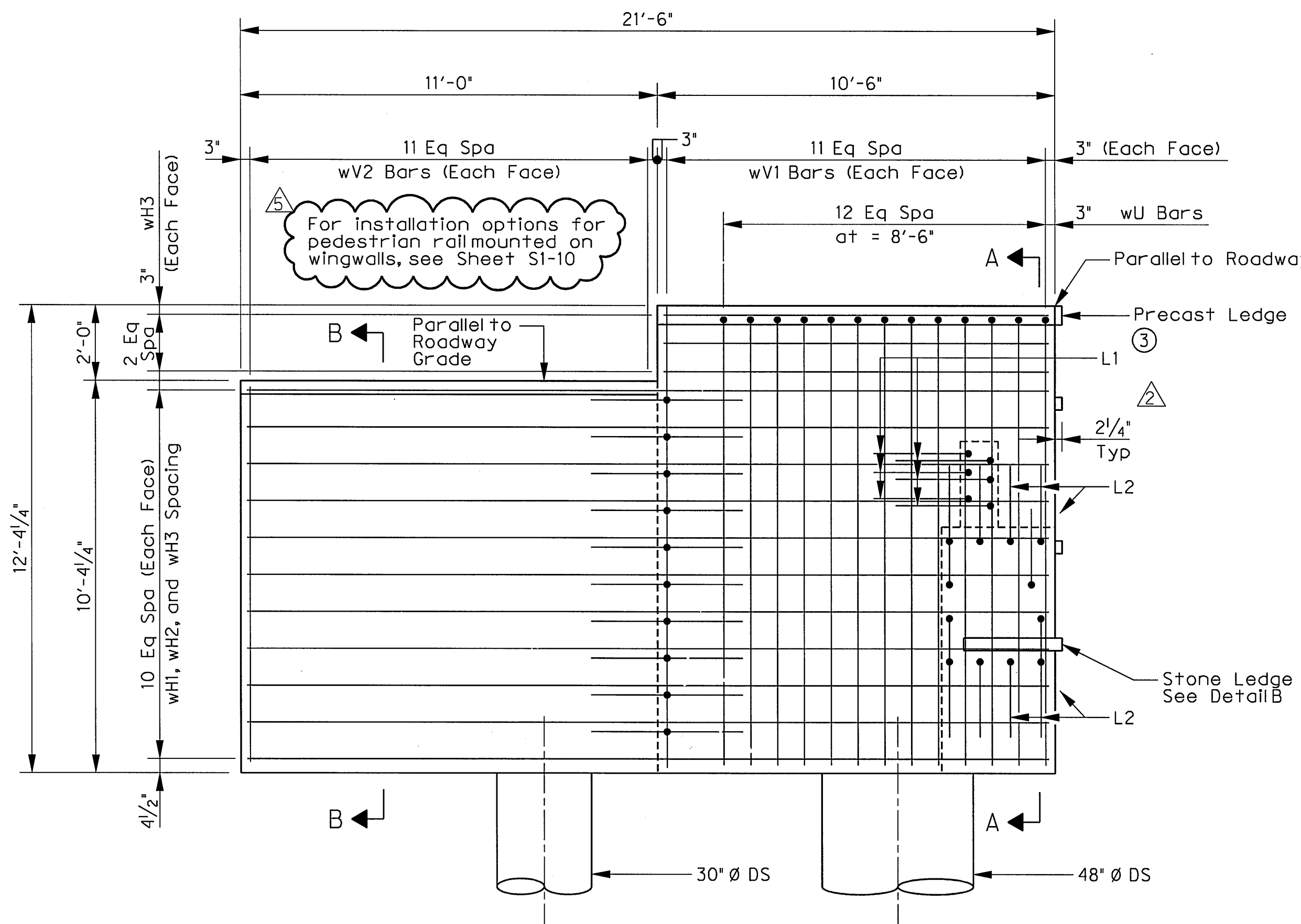
ADDISON TOWN OF ADDISON DALLAS COUNTY, TEXAS

VITRUVIAN PARK BRIDGES BELLA LANE

ABUTMENT NO. 4 PLAN AND ELEVATION

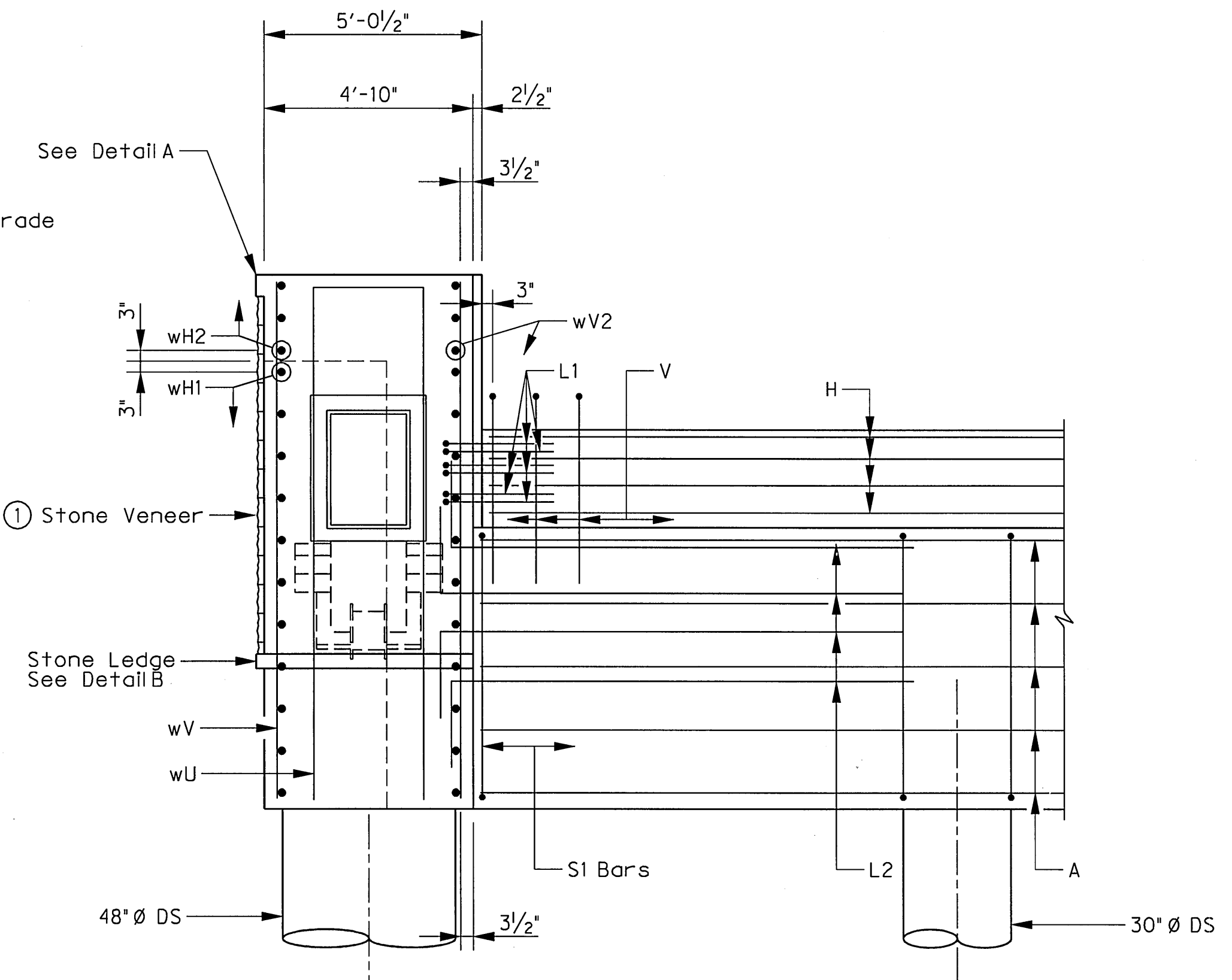
HALFF 1201 NORTH BOWSER ROAD, RICHARDSON, TEXAS 75081-2275
TEL (214) 346-0200 FAX (214) 739-0095

PROJECT	DESIGN	DRAWN	DATE	FILE	SHEET
27379	ESC	AHH	APRIL 2010	-	S2-05



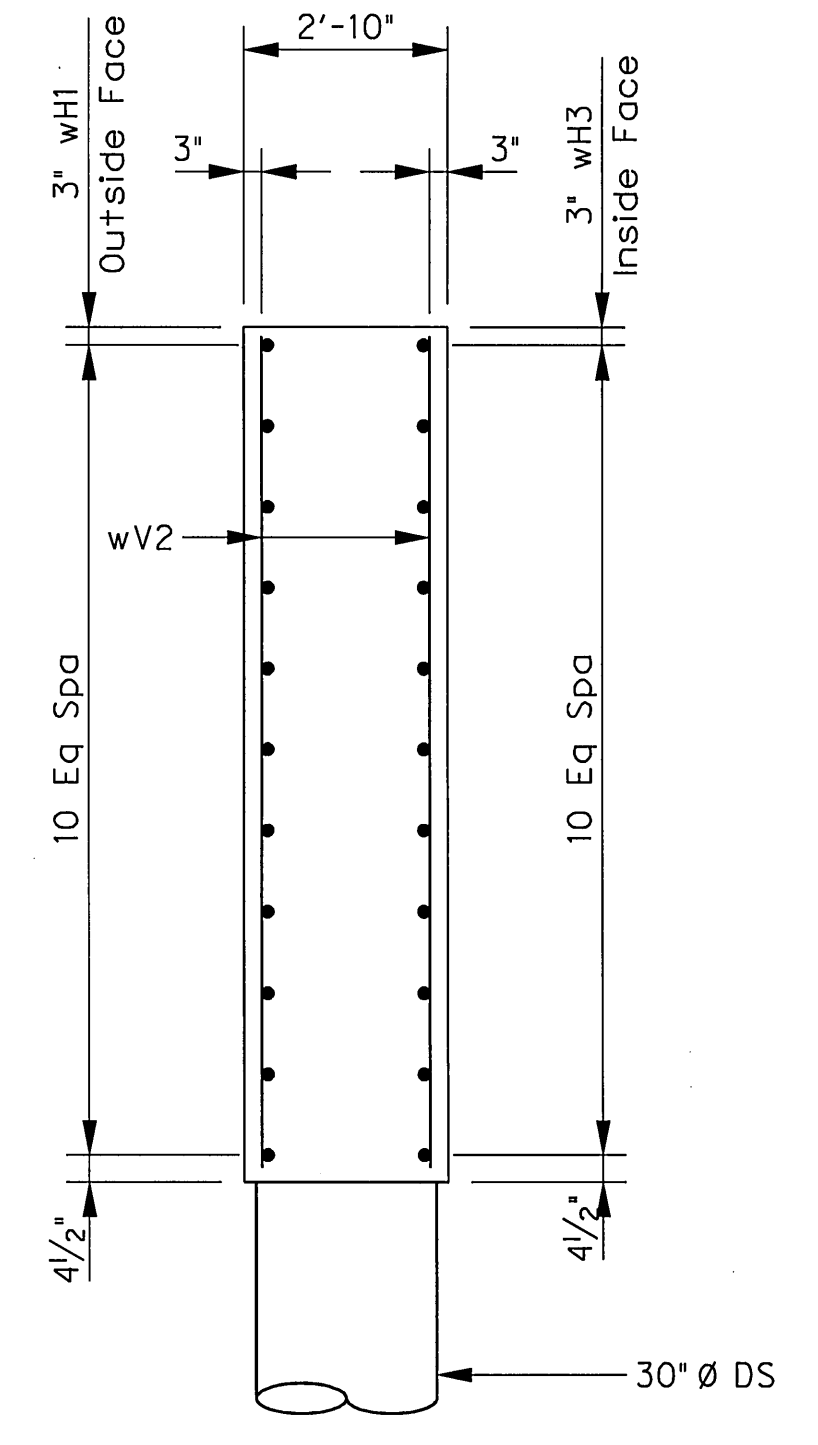
WINGWALL ELEVATION
SCALE: 3/8" = 1'-0"

③ Precast ledge to be installed after arch is erected. See Note 2 below for attachment.



SECTION A-A
SCALE: 3/8" = 1'-0"

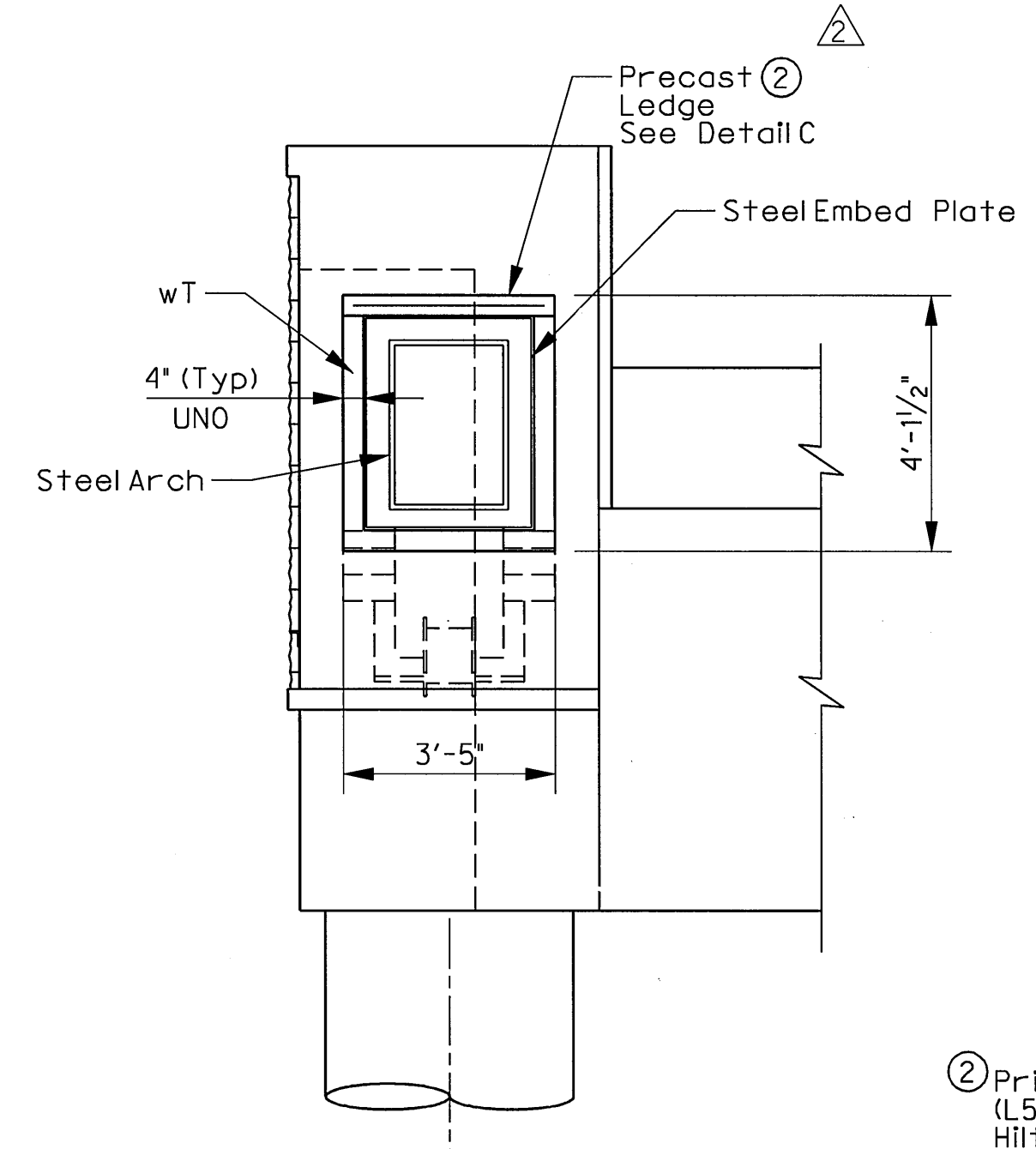
① Stone ledge shall be a 5 x 3 x 1/4" angle with 1/2" Ø Hilti Kwik Bolt 3 expansion anchors embedded a minimum of 3 1/2" and spaced at 1'-6" C.C. Refer to landscape architecture sheets for location of stone veneer and stone ledges.



SECTION B-B
SCALE: 3/8" = 1'-0"

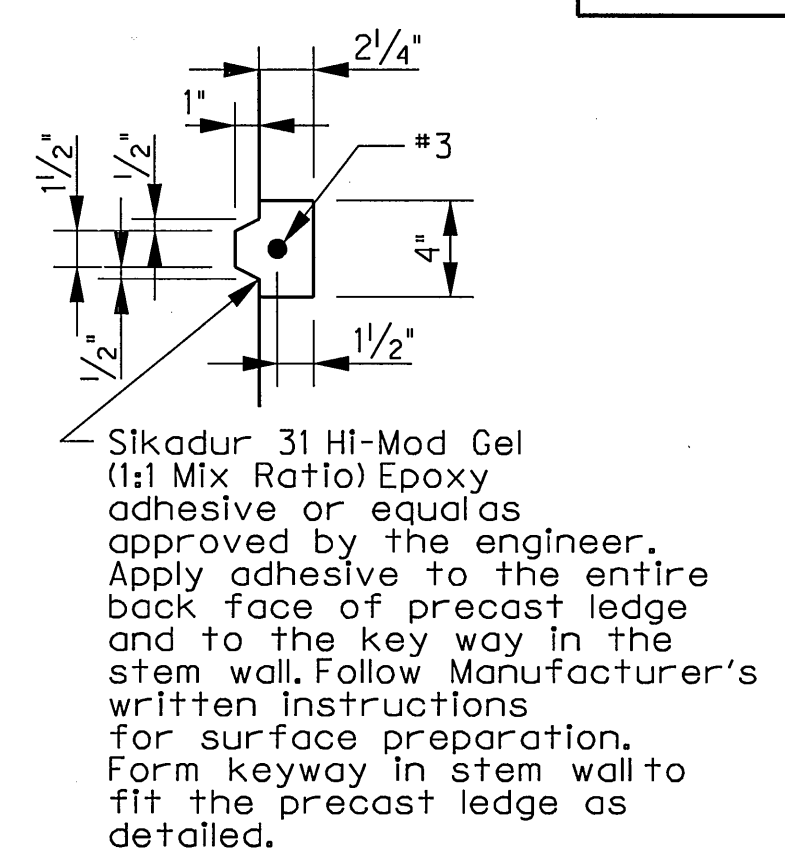
TABLE A - WINGWALL LEDGE ELEVATIONS

NORTH ABUTMENT		SOUTH ABUTMENT	
EAST WW	WEST WW	EAST WW	WEST WW
557.0	555.0	557.0	557.0



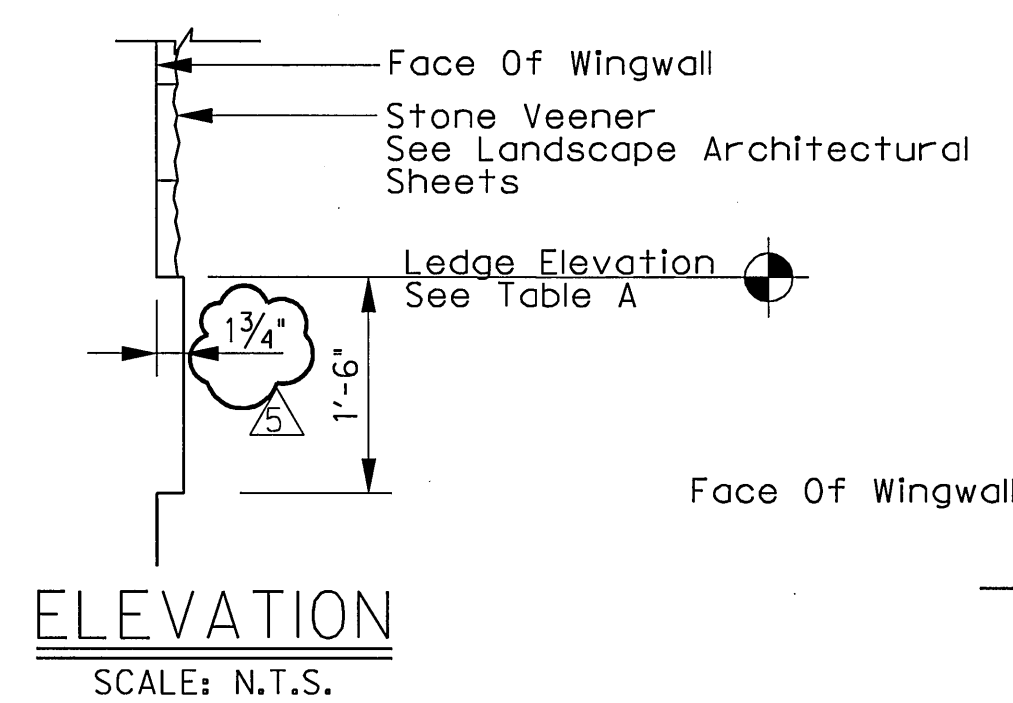
STONE COLLAR DETAILS
SCALE: 3/8" = 1'-0"

Note: See Wingwall Elevation and Section A-A for abutment details and reinforcing not shown.

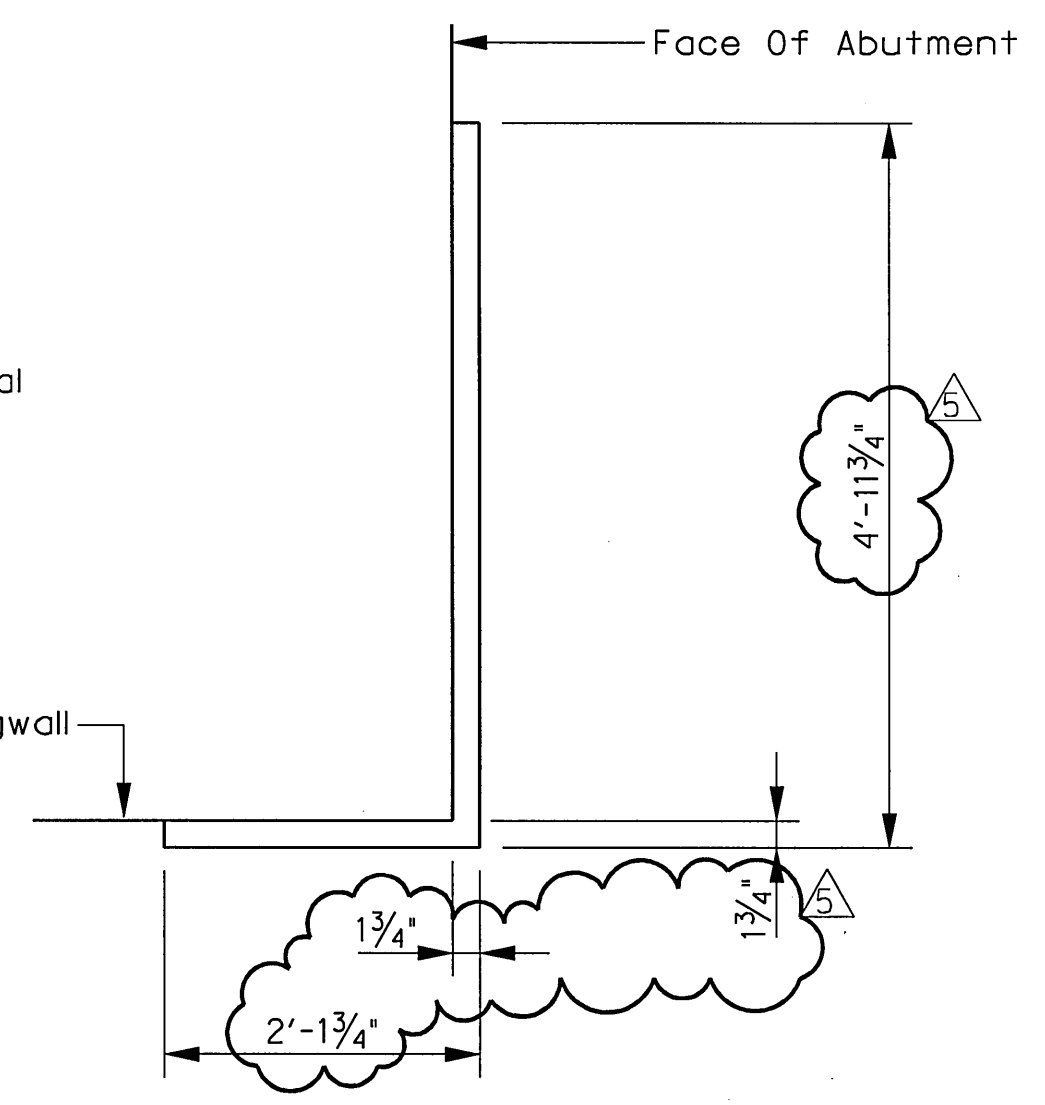


DETAIL C
SCALE: N.T.S.

② Prior to Arch Installation a temporary stone support (L5 x 3 x 1/4" (LLV)) shall be used. Installation with three 1/2" Ø Hilti Kwik Bolt 3 expansion anchors embedded 3 1/2" min. Coordinate removal of stone veneer and temporary stone support with steel arch erector. Replace the temporary stone ledge with precast ledge after arch has been installed. At the Contractor's option, the stone veneer may be installed after the Arch is fully erected. If this option is used, the temporary stone support (L5 x 3 x 1/4") is not needed. For either option, the precast ledge shall be installed only after the Arch is fully erected.

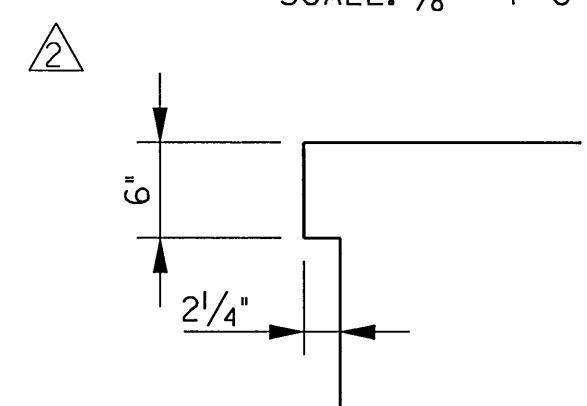


ELEVATION
SCALE: N.T.S.

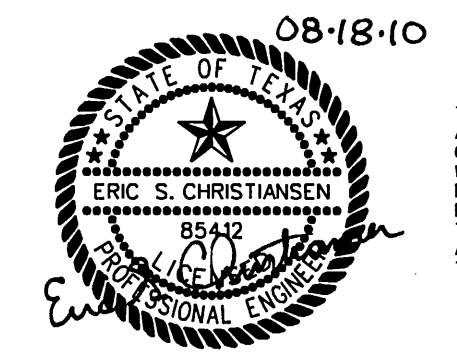


PLAN
SCALE: N.T.S.

DETAIL B
SCALE: N.T.S.



DETAIL A
SCALE: 3/8" = 1'-0"



08-18-10
THE SEAL APPEARING ON THIS DOCUMENT WAS AUTHORIZED BY ERIC S. CHRISTIANSEN, P.E. #8542 ON 08-18-2010. ALTERATION OF A SEALED DOCUMENT WITHOUT PROPER NOTIFICATION TO THE RESPONSIBLE ENGINEER IS AN OFFENSE UNDER THE TEXAS ENGINEERING PRACTICE ACT. THE RECORD COPY OF THIS DRAWING IS ON FILE AT THE OFFICES OF HALFF ASSOCIATES, 1201 NORTH BOWSER ROAD, RICHARDSON, TEXAS, 75081. TYPE FIRM #P-312.

NO.	REVISION	BY	DATE
①	Addendum #5	ESC	08/18/10
②	Addendum #2	ESC	05/19/10

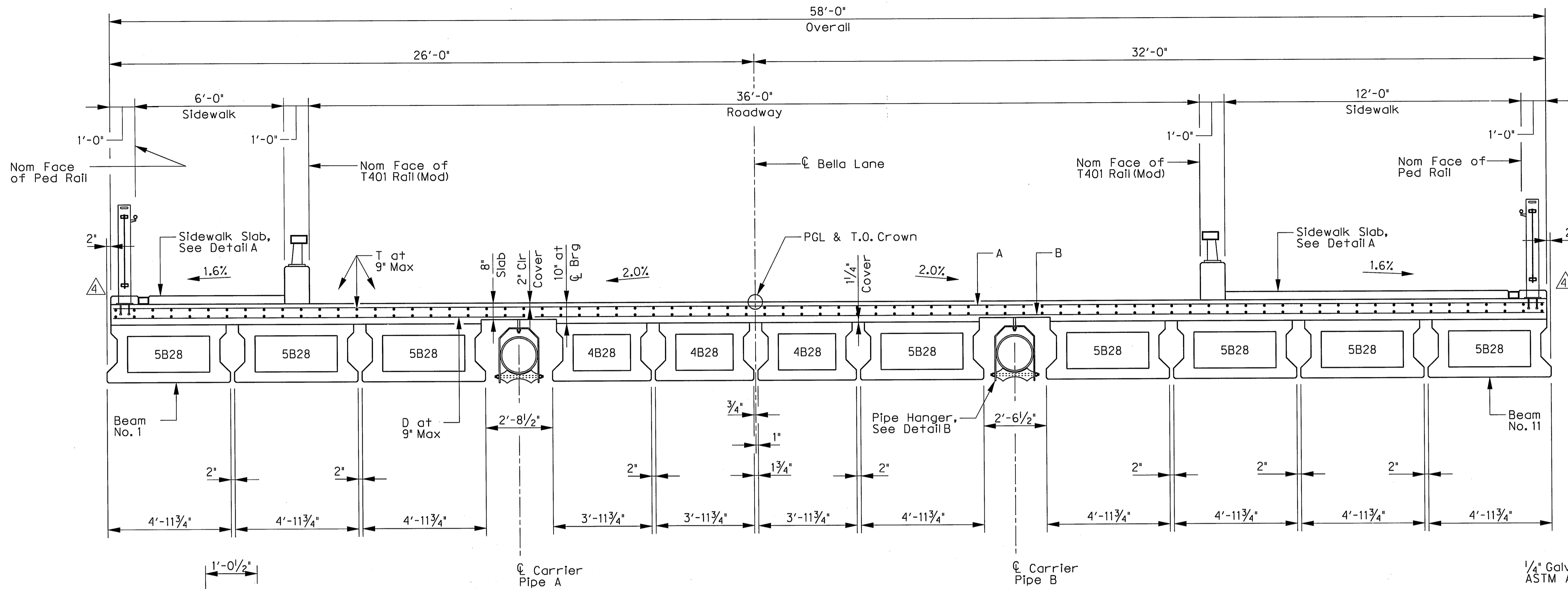
ADDISON TOWN OF ADDISON DALLAS COUNTY, TEXAS

VITRUVIAN PARK BRIDGES BELLA LANE

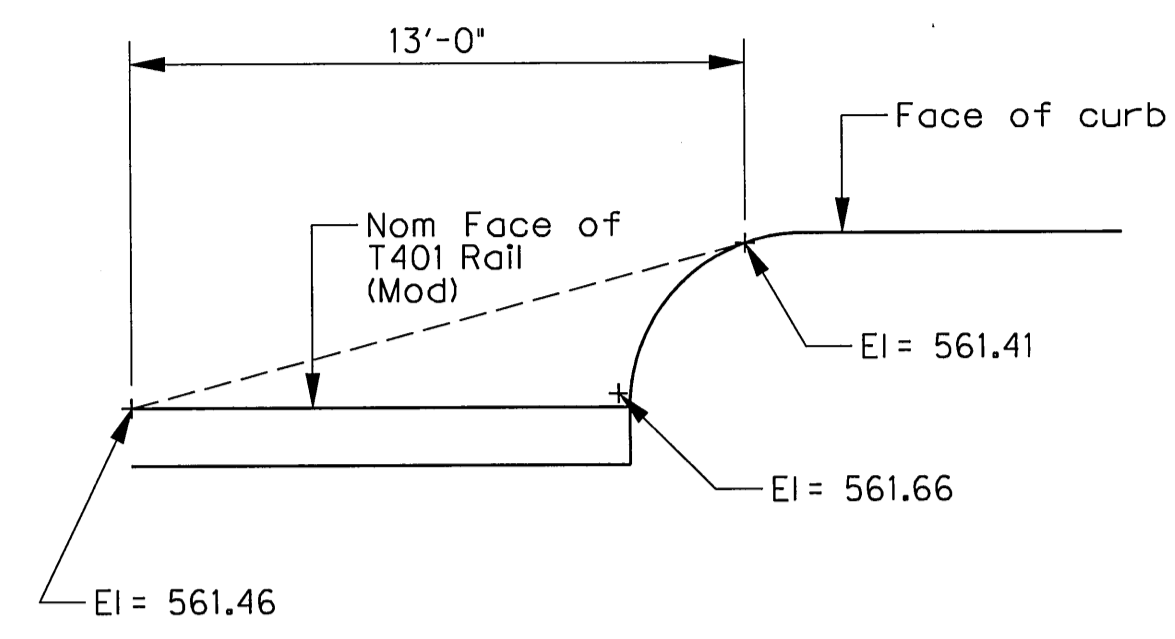
ABUTMENT DETAILS WINGWALL DETAILS

HALFF 1201 NORTH BOWSER ROAD, RICHARDSON, TEXAS 75081-2275
TEL (214) 348-6200 FAX (214) 739-0095

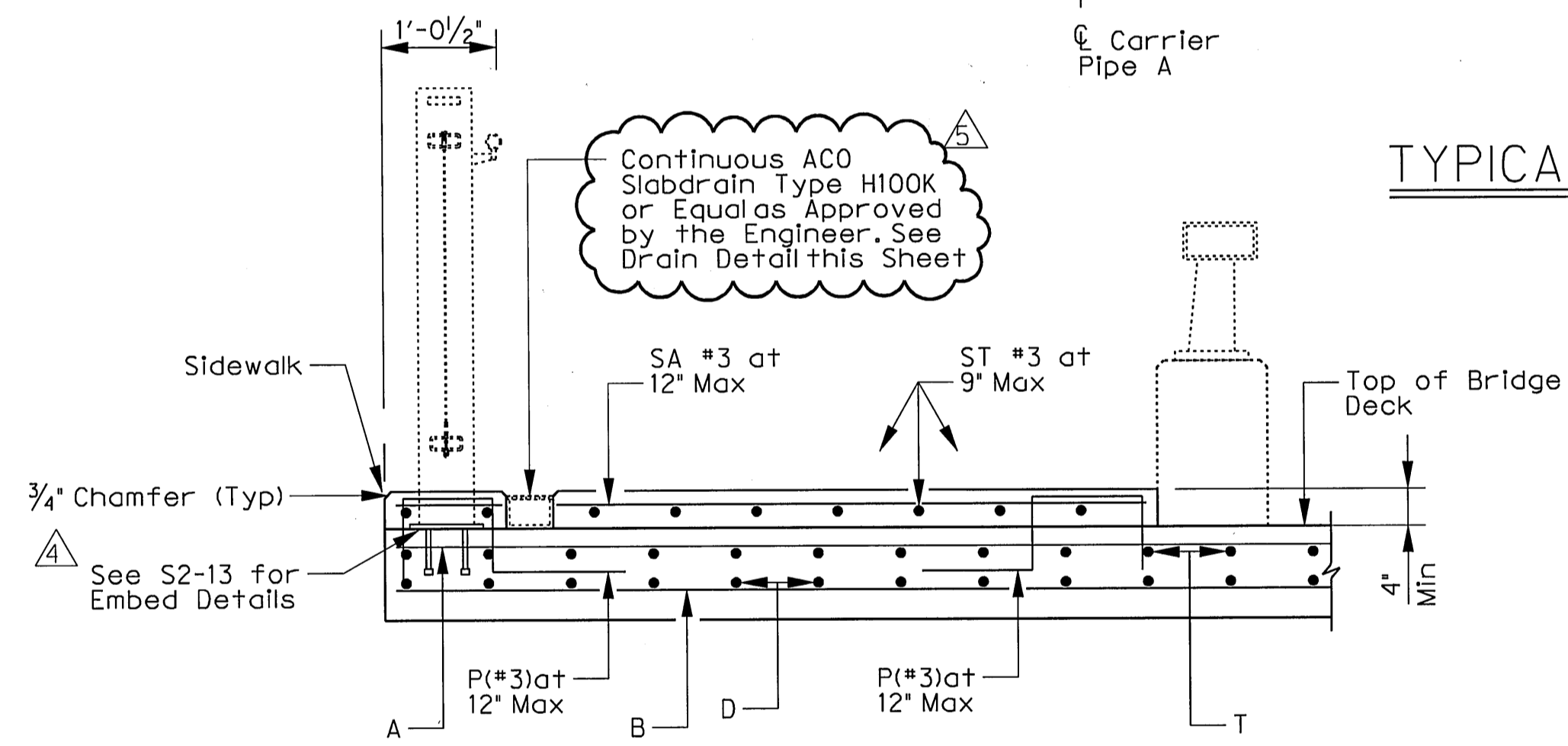
PROJECT	DESIGN	DRAWN	DATE	FILE	SHEET
27379	ESC	AHH	APRIL 2010	-	S2-07



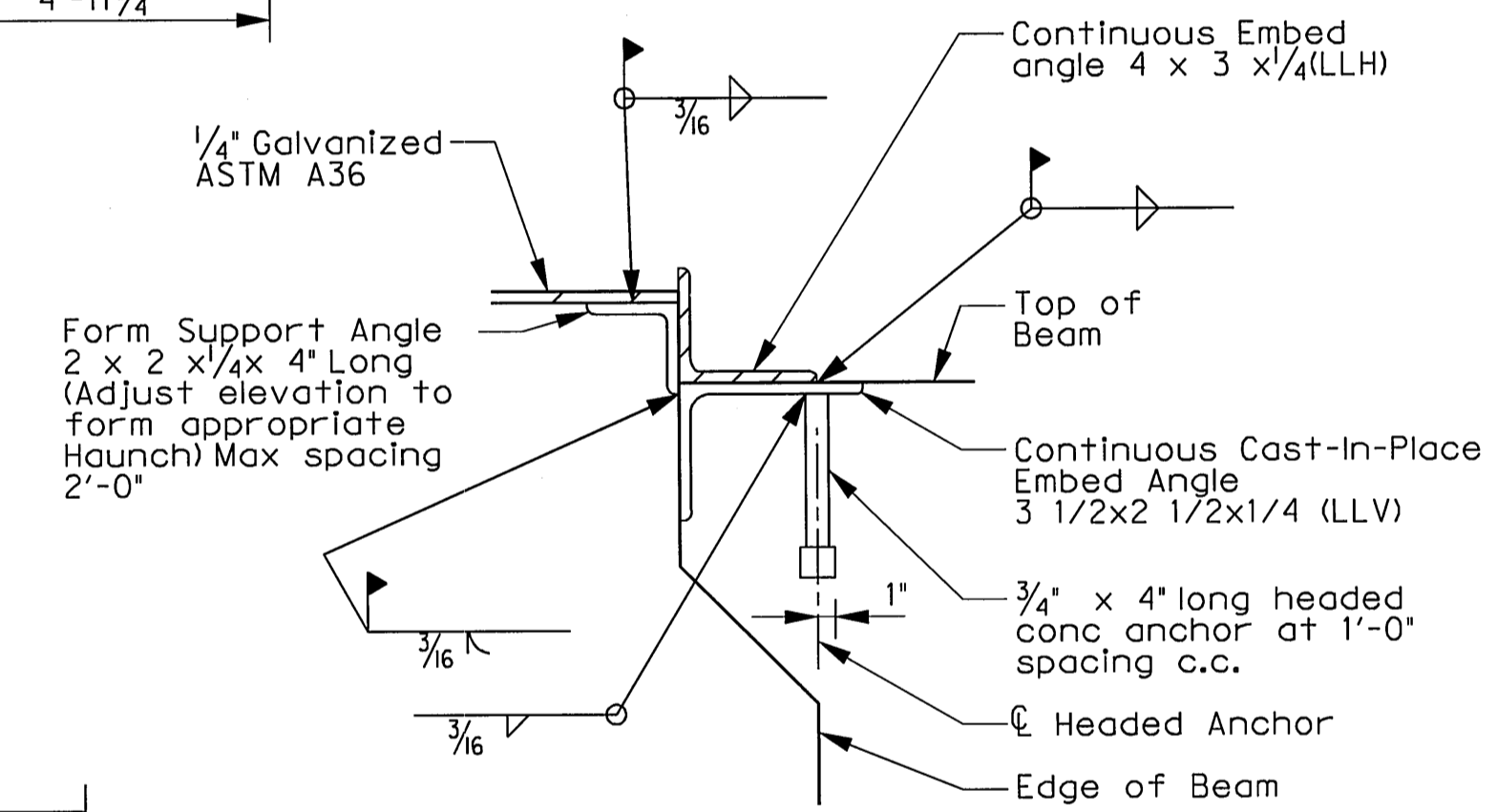
TYPICAL TRANSVERSE SECTION
 SCALE: 3/8" = 1'-0"



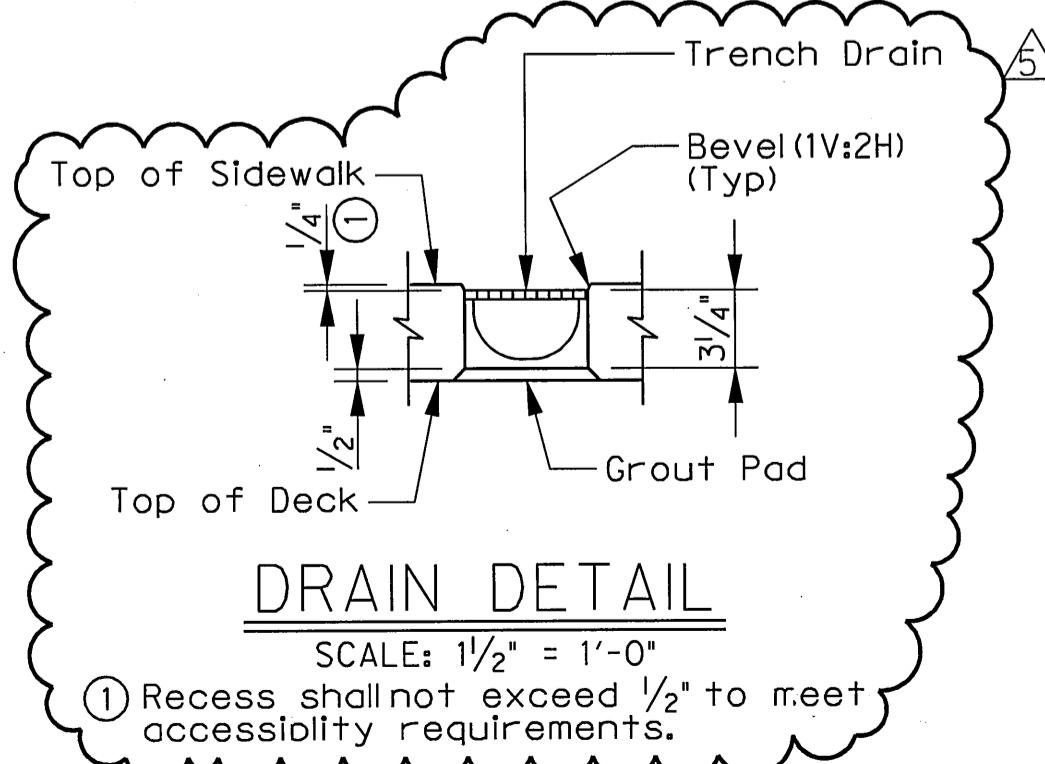
CURB DRAINAGE DETAIL
 SCALE: NTS
 (DETAIL IS TYPICAL AT ABUTMENT 4)



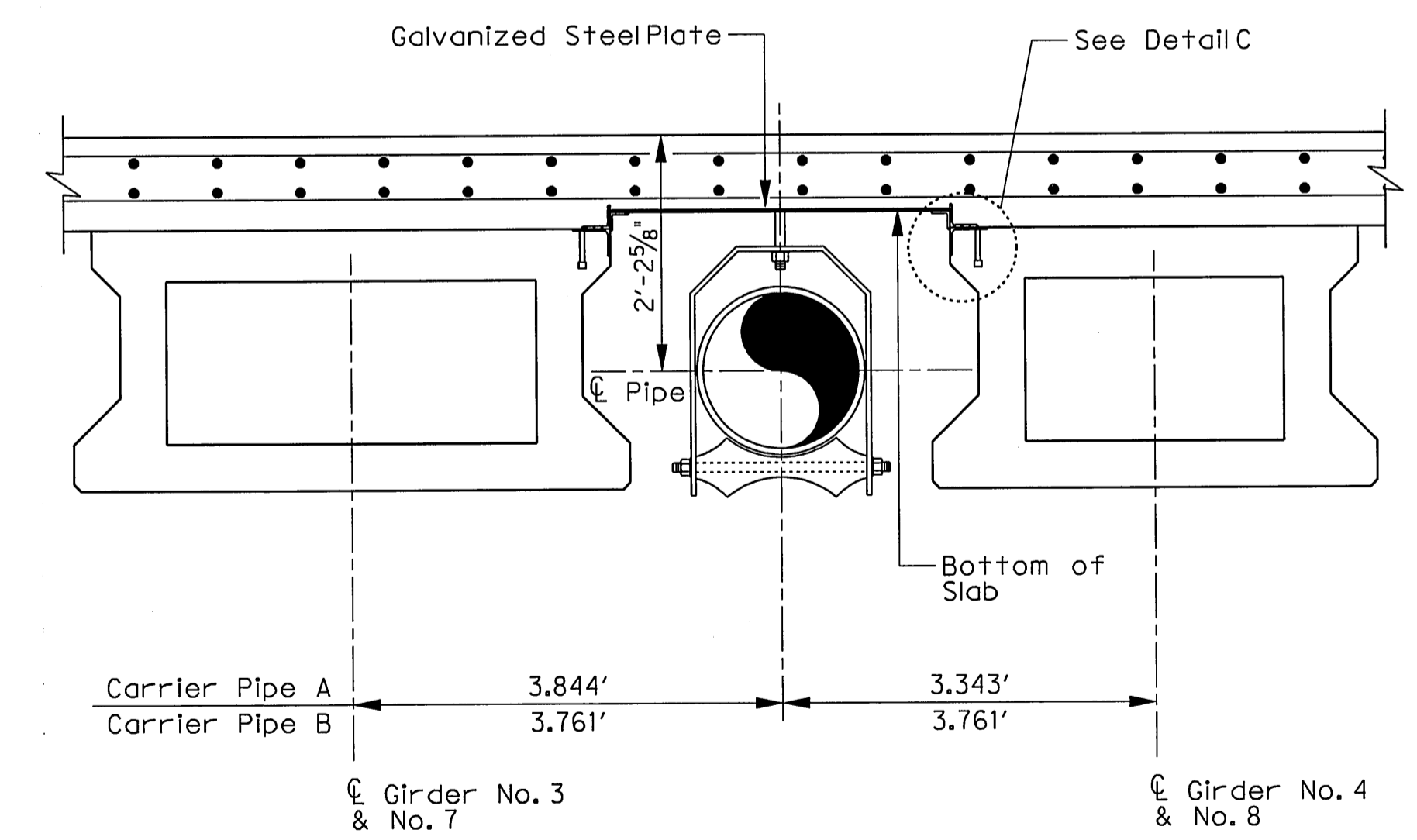
DETAIL A
 SCALE: 3/4" = 1'-0"
 (Beams not shown for clarity)



DETAIL C
 SCALE: 3" = 1'-0"

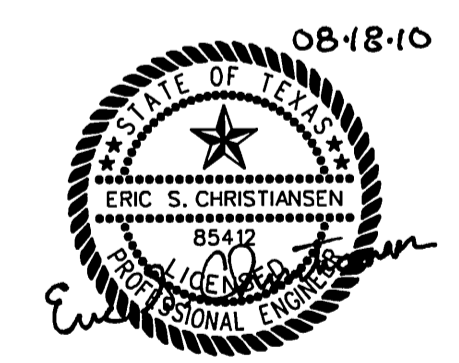


DRAIN DETAIL
 SCALE: 1/2" = 1'-0"
 ① Recess shall not exceed 1/2" to meet accessibility requirements.



DETAIL B
 SCALE: 3/4" = 1'-0"

Notes: For information not shown see Pipe Hanger Assembly Typical Section/S2-14
 Steel Carrier Pipe shall be 18" diameter schedule 40 pipe.

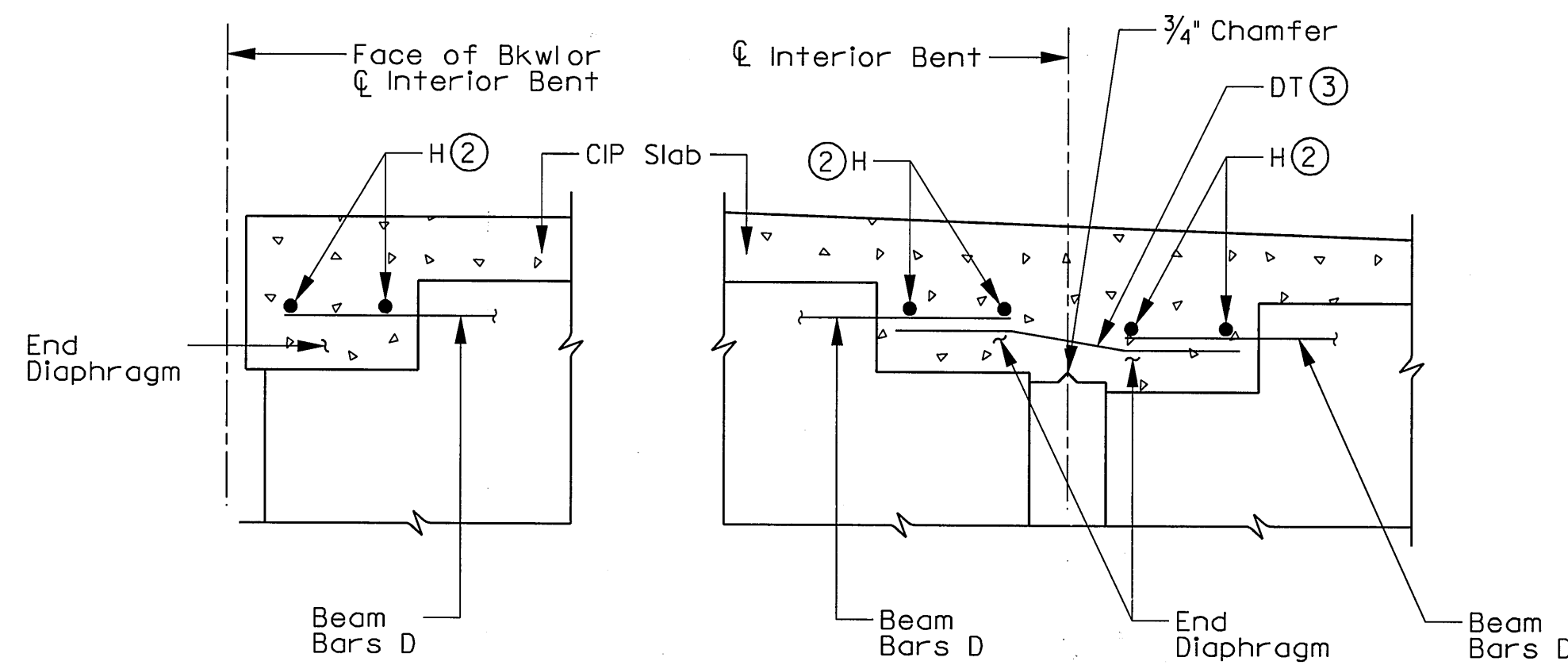


THE SEAL APPEARING ON THIS DOCUMENT WAS AUTHORIZED BY ERIC S. CHRISTENSEN, P.E. #85412 ON 08-18-2010. ALTERATION OF A SEALED DOCUMENT WITHOUT PROPER NOTIFICATION TO THE RESPONSIBLE ENGINEER IS AN OFFENSE UNDER THE TEXAS ENGINEERING PRACTICE ACT. THE RECORD COPY OF THIS DRAWING IS ON FILE AT THE OFFICES OF HALFF ASSOCIATES, 1201 NORTH BOWSER ROAD, RICHARDSON, TEXAS, 75081, TBPE FIRM #F-312.

Addendum No. 5		ESC	08/18/10
Addendum No. 4		ESC	07/28/10
NO.	REVISION	BY	DATE
Addison TOWN OF ADDISON DALLAS COUNTY, TEXAS VITRUVIAN PARK BRIDGES BELLA LANE DECK DETAILS			
HALFF 1201 NORTH BOWSER ROAD, RICHARDSON, TEXAS 75081-2275 TEL (214) 348-6200 FAX (214) 739-0085			
PROJECT	DESIGN	DRAWN	DATE
27379	ESC	AHH	APRIL 2010
FILE	SHEET		
-	S2-12		

TABLE OF ESTIMATED QUANTITIES - UNIT 1

SPAN NO.	REINF CONCRETE SLAB	PRSTR CONCRETE BEAM (4B28)	PRSTR CONCRETE BEAM (5B28)	CLASS S CONCRETE (SLAB)	CLASS S CONCRETE (SDWLK)	REINF STEEL
	SF	LF	LF	CY	CY	LB
1	1,786	91.96	235.45	47.3	18.0	11,609
2	4,111	211.14	563.04	105.6	17.5	26,720
3	2,281	115.40	317.51	59.7	20.1	14,828
TOTAL	8,178	418.50	1,116.00	212.7	55.5	53,157

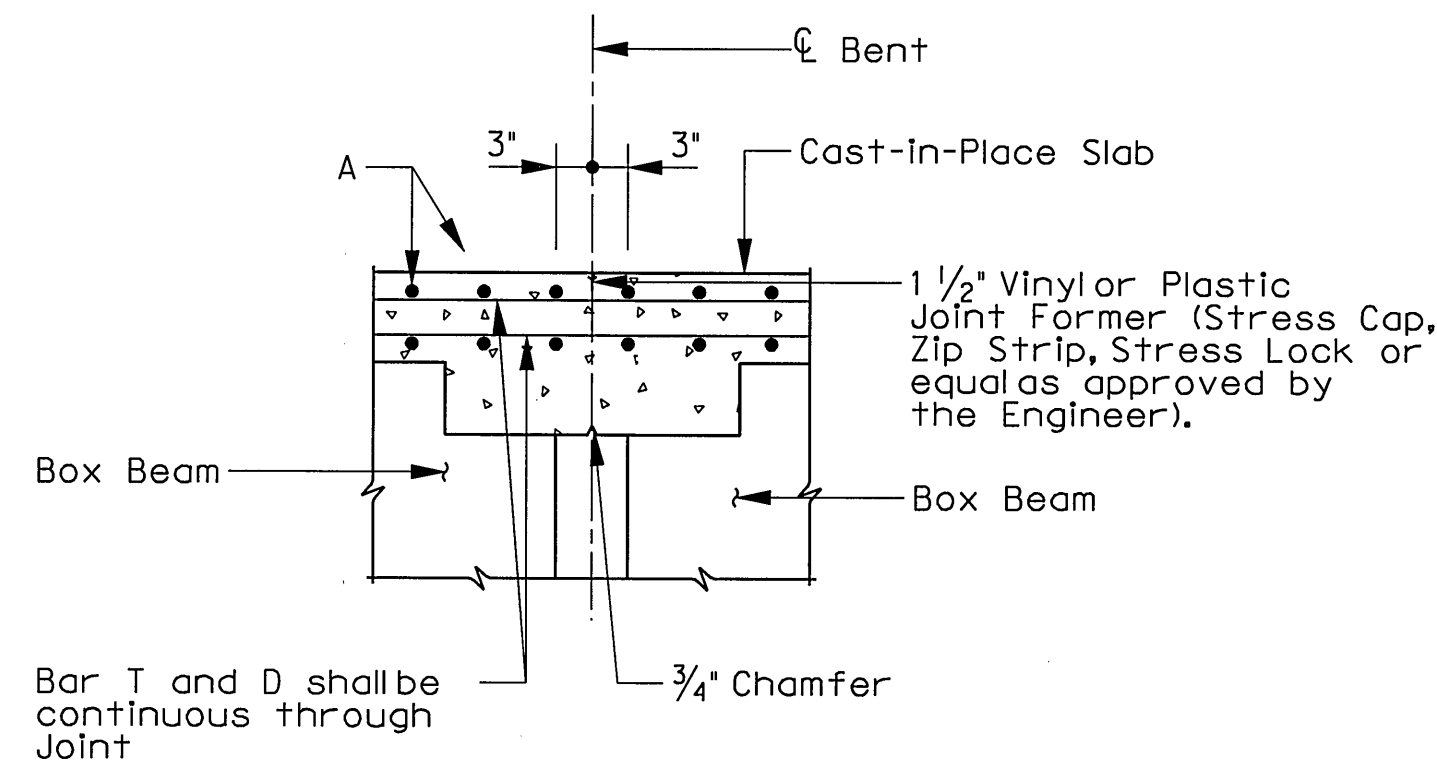


ABUTMENT OR INTERIOR BENT

INTERIOR BENT (Without Expansion Joint)

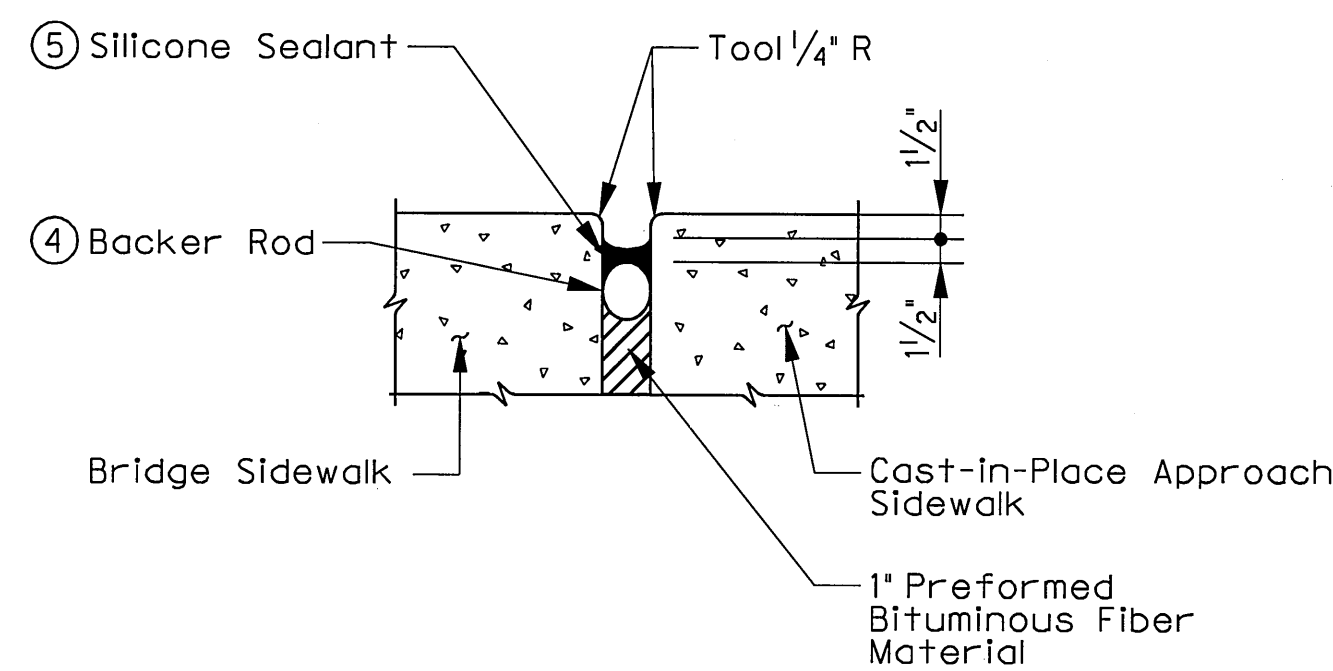
TYPICAL END DIAPHRAGM SECTIONS

SCALE: NTS
(Along centerline of Box Beam)
(Slab reinforcing not shown for clarity)



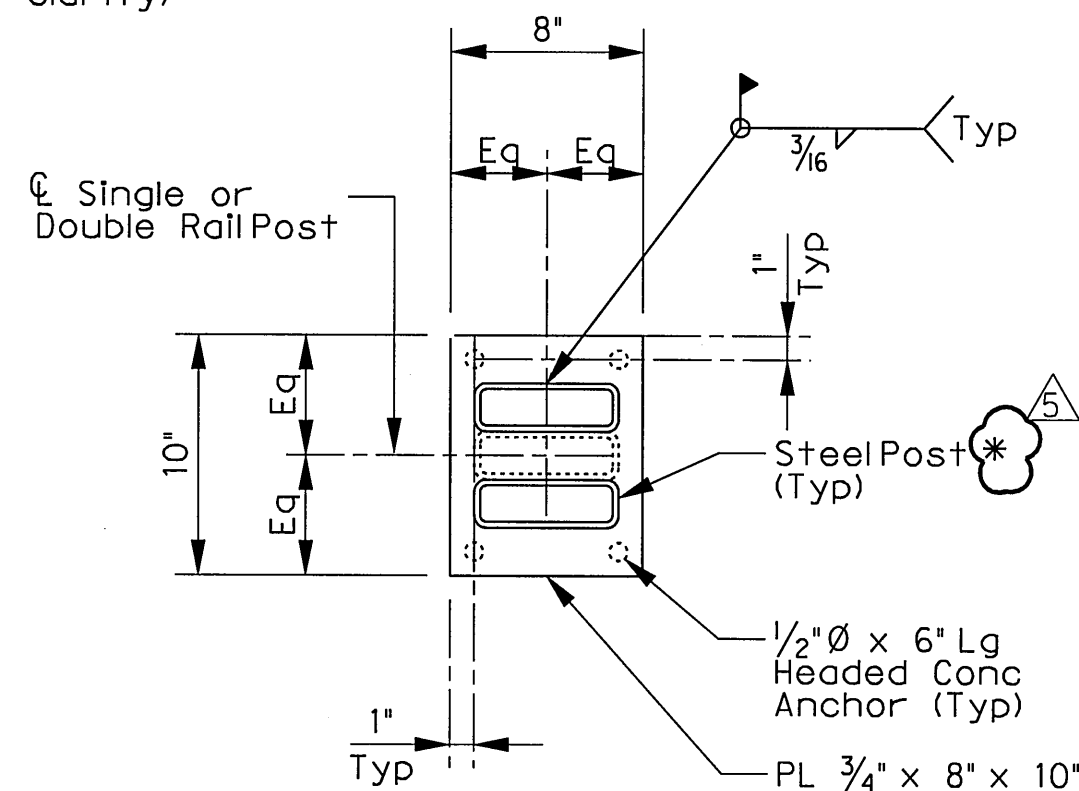
CONTINUOUS SLAB DETAIL

SCALE: NTS
(Diaphragm reinforcing not shown for clarity)



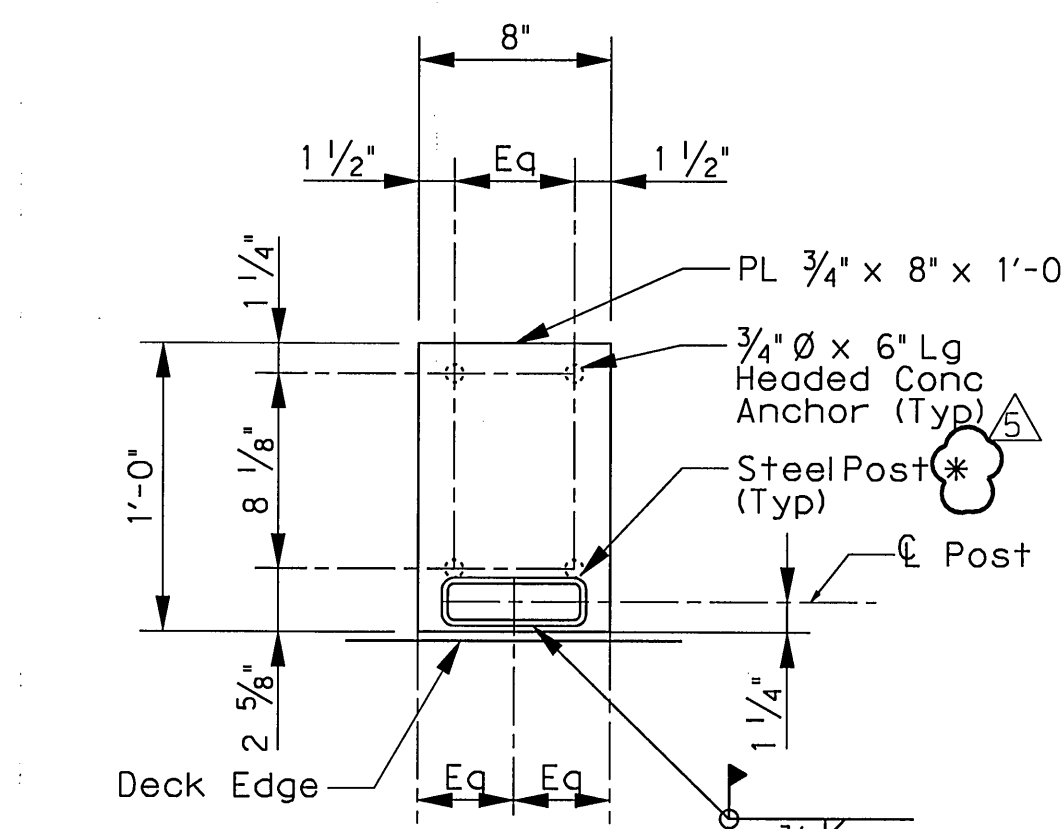
CONTINUOUS SLAB DETAIL

SCALE: NTS



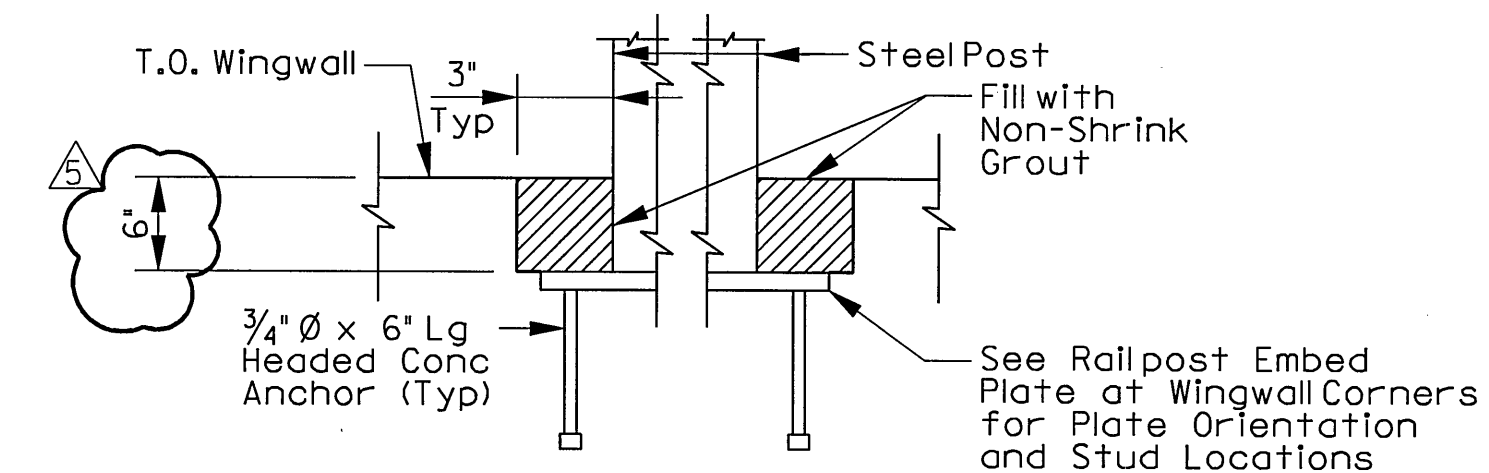
TYPICAL RAIL POST EMBED PLATE DETAIL

SCALE: 1/4" = 1'-0"



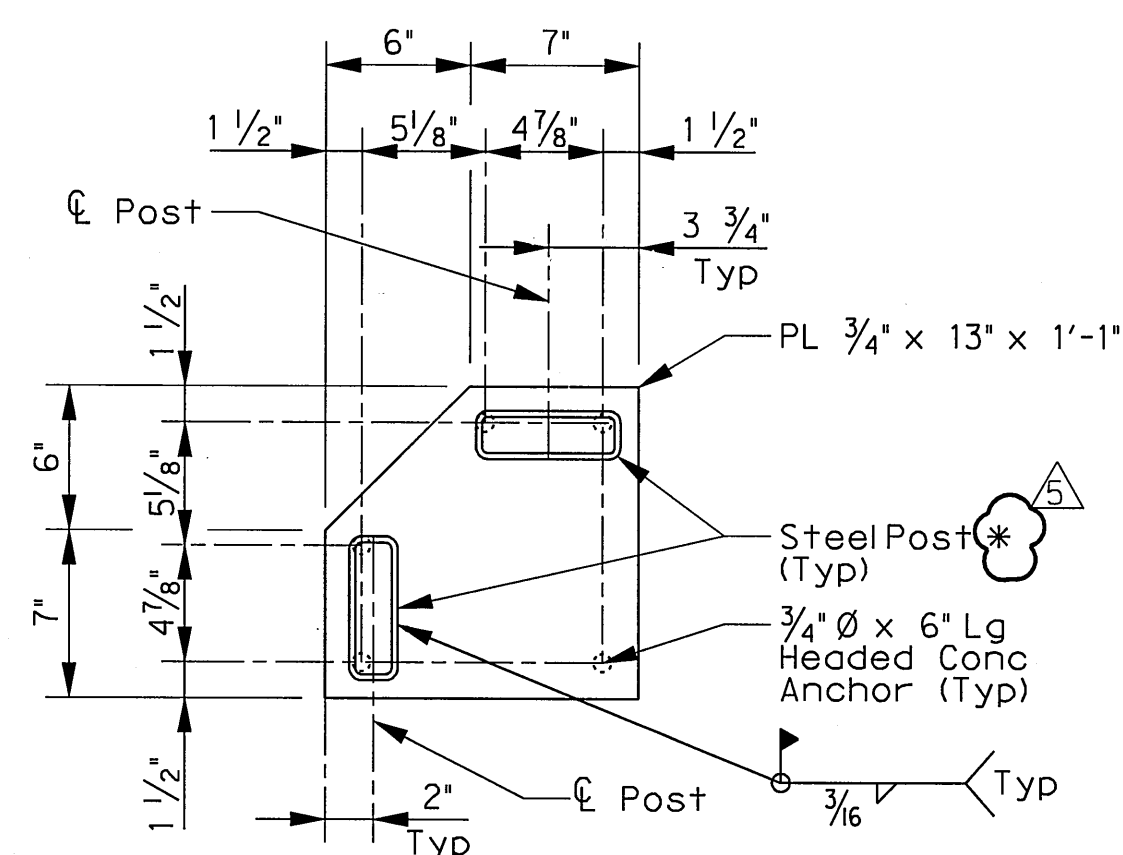
RAIL POST EMBED PLATE AT BRIDGE SEJ DETAIL

SCALE: 1/4" = 1'-0"



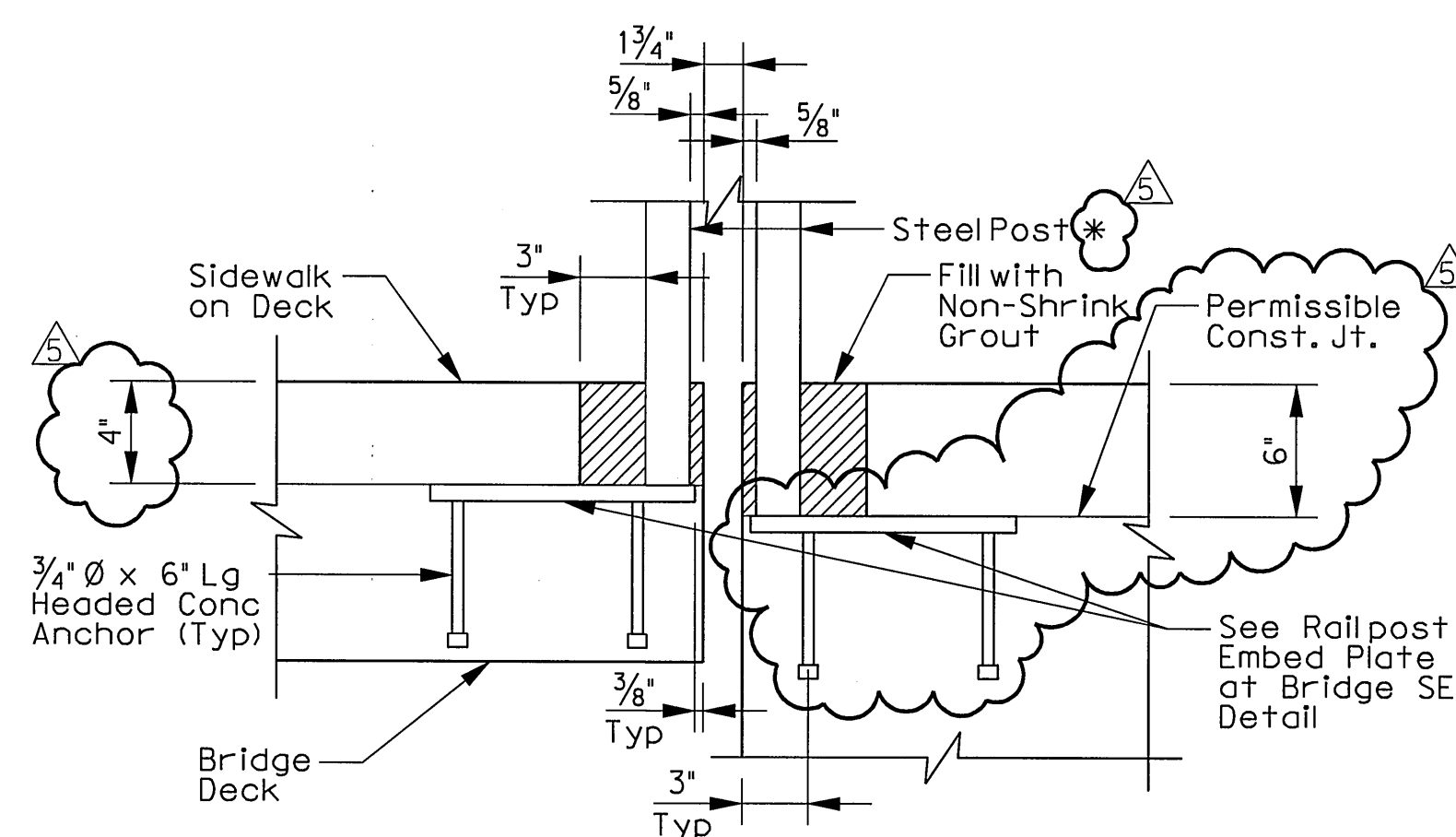
RAIL POST EMBED PLATE AT WINGWALL CORNERS SECTION

SCALE: 1/4" = 1'-0"



RAIL POST EMBED PLATE AT WINGWALL CORNERS DETAIL

SCALE: 1/4" = 1'-0"



RAIL POST EMBED PLATE AT BRIDGE SEJ SECTION

SCALE: 1/4" = 1'-0"

Bar	Size
A	#5
B	#5
D	#5
DT	#5
H	#5
SA	#3
ST	#3
T	#4

TABLE OF SECTION DEPTHS - UNIT 1

SPAN NO.	BEAM NO.	*X* AT C.L. BRG	*Y* AT C.L. BRG	*Z* AT C.L. SPAN
1	1, 10 & 11	9 1/2"	3'-1 1/2"	9 1/2"
	2-9	9 1/2"	3'-1 1/2"	9 1/4"
2	1, 10 & 11	11"	3'-3"	9 3/4"
	2-9	11"	3'-3"	9 1/2"
3	ALL	9 1/2"	3'-1 1/2"	9 1/4"

* Do not galvanize bottom one inch of post to allow for field welding.

- See Bridge Layout for Joint type.
- Provide 1 1/2" end cover to Bars H. After allbeams have been placed, weld one Bar H to two Bars D at each end of allbeams.
- Lap Bars DT 9" Min with each Beam Bar D at Interior Bents without Expansion Joints. Bars DT shown bent for clarity only.
- Backer Rod shall be 25% larger than joint opening and shall be compatible with the sealant; no reaction shall occur between the rod and the sealant.
- Sealant shall be Class 7 silicone sealant. Install when ambient temperature is between 55° F and 85° F and rising. Engineer is to determine allowable hours for sealant application.
- Reinforcing steel weight is calculated using an approximate factor of 6.5 lbs/SF.
- Theoretical Dimension.
- Quantity is for contractor's information only. Quantity includes sidewalk on approach slab.



Addendum #5	ESC	08/18/10
Addendum #1	ESC	5/14/10
NO.	REVISION	BY DATE

TOWN OF ADDISON
 DALLAS COUNTY, TEXAS
VITRUVIAN PARK BRIDGES
 BELLA LANE
DECK DETAILS

 1201 NORTH BOWSER ROAD, RICHARDSON, TEXAS 75081-2275
 TEL (214) 348-6200 FAX (214) 739-0095
 PROJECT: 27379 DESIGN: ESC DRAWN: AHH DATE: APRIL 2010 FILE: SHEET: S2-13

USER: ah2140

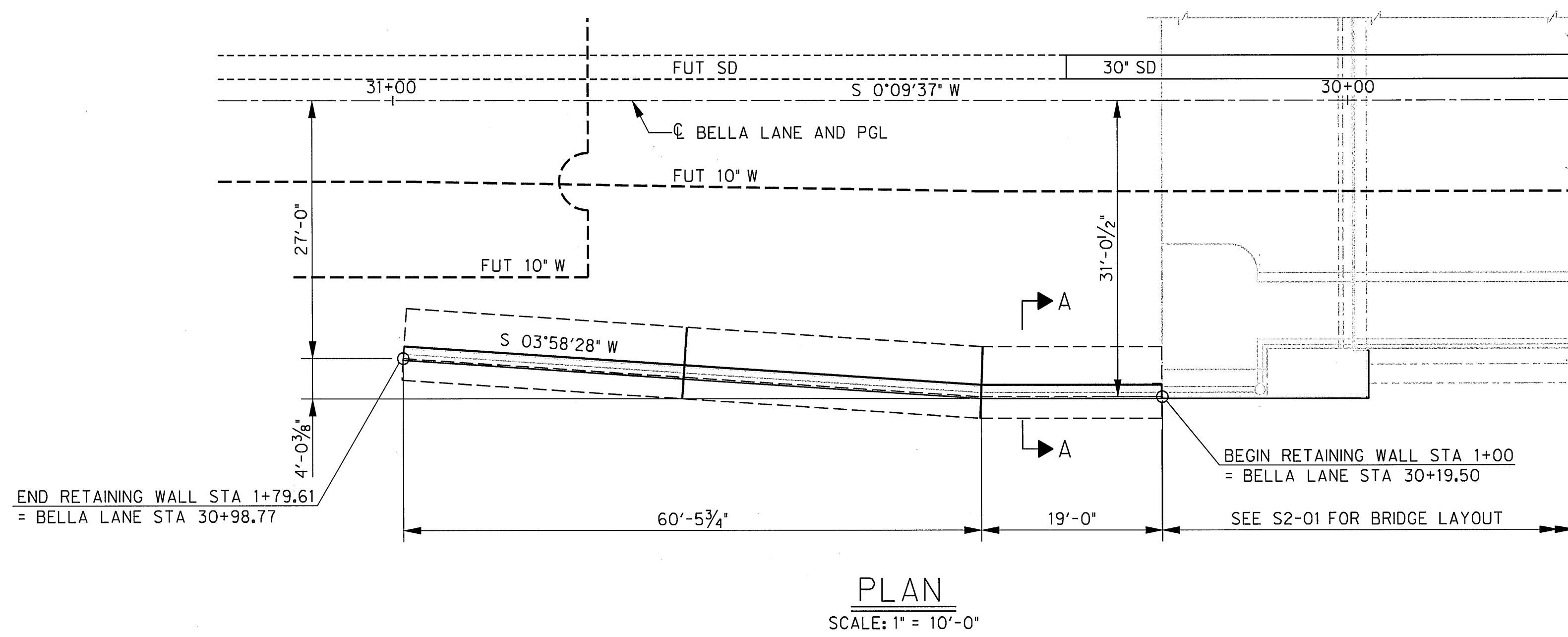
OFFICE: RCH

PROJECT # 27379

FILE: 27379-SC-BELLAB-RT01.dgn

TIME: 2:18:07 PM

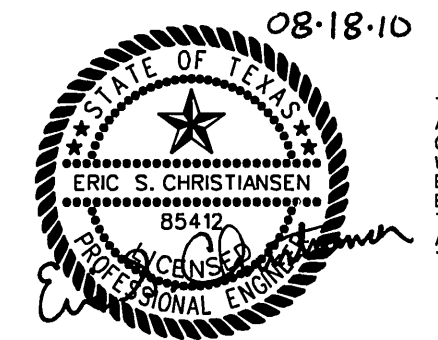
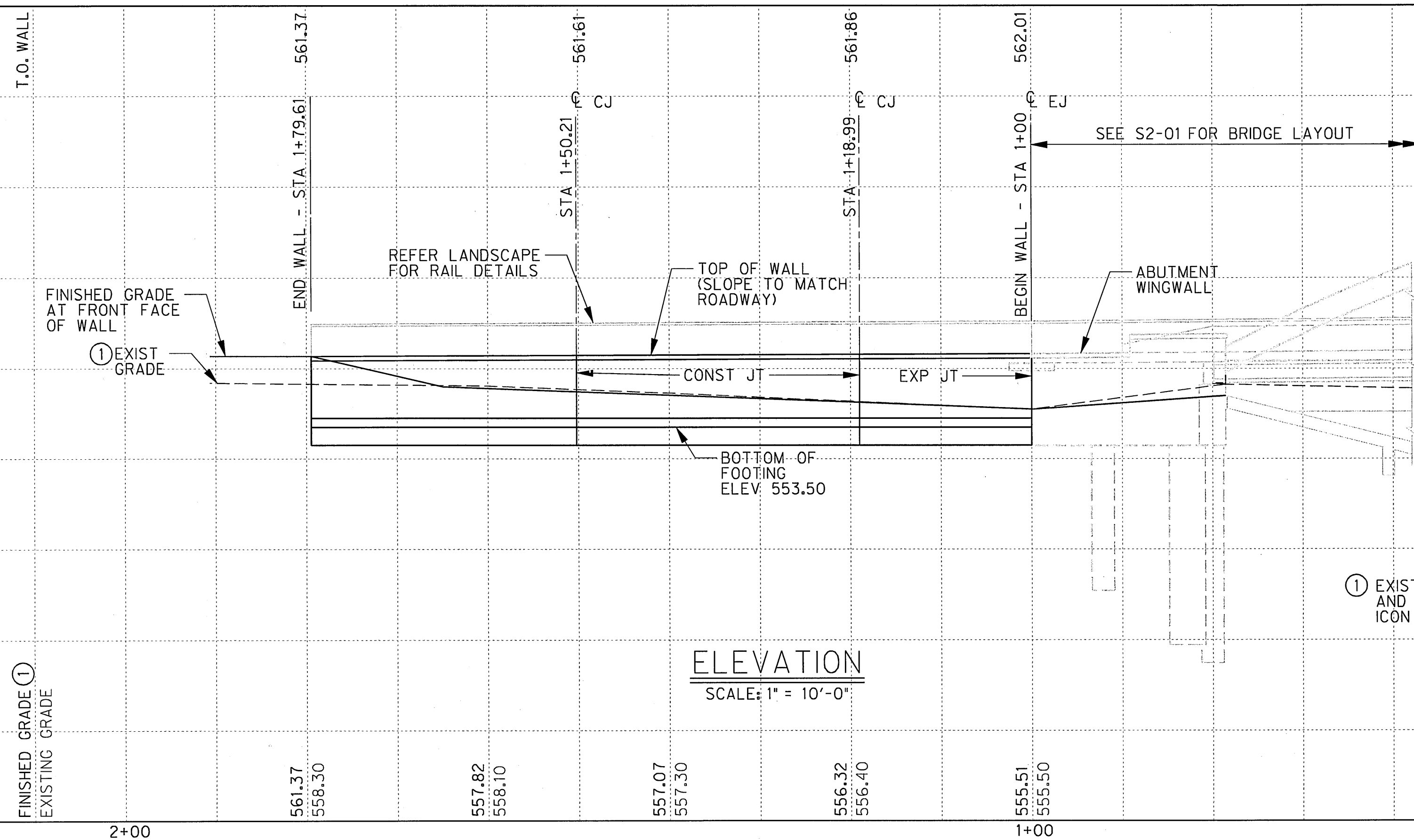
DATE: 8/18/2010



GENERAL NOTES:

- ALL CONSTRUCTION MATERIALS AND WORKMANSHIP SHALL BE IN ACCORDANCE WITH THESE DRAWINGS AND TxDOT 2004 SPECIFICATIONS FOR CONSTRUCTION OF HIGHWAYS, STREETS AND BRIDGES (ITEM 423).
- CONTRACTOR SHALL LOCATE EXISTING UTILITIES PRIOR TO COMMENCING CONSTRUCTION OF THIS RETAINING WALL. CONTRACTOR SHALL NOTIFY OWNER OF ANY POTENTIAL CONFLICT IN A TIMELY MANNER (ITEM 400).
- CONTRACTOR SHALL PROVIDE TEMPORARY ERECTION BRACING AND SHORING OF ALL STRUCTURAL WORK AS REQUIRED FOR STABILITY OF THE STRUCTURE DURING ALL PHASES OF CONSTRUCTION.
- ALL CONCRETE SHALL BE CLASS C (ITEM 421) WITH A MINIMUM COMPRESSIVE STRENGTH EQUAL TO 3,600 PSI, AND COARSE AGGREGATE GRADE NOS. 2-5 ARE PERMITTED.
- ALL REINFORCING STEEL SHALL COMPLY WITH ASTM A615, GRADE 60.
- CONCRETE COARSE AGGREGATE SHALL BE GRADES 2 OR 3 (ITEM 421) AND SHALL BE WRAPPED AS SHOWN WITH FILTER FABRIC.
- FILTER FABRIC SHALL CONFORM TO TxDOT DEPARTMENTAL MATERIAL SPECIFICATION D-9-6200. FILTER FABRIC SPLICES SHALL HAVE A MINIMUM OVERLAP OF 18 INCHES.
- DESIGN OF RETAINING WALLS IS BASED ON THE FOLLOWING VALUES:

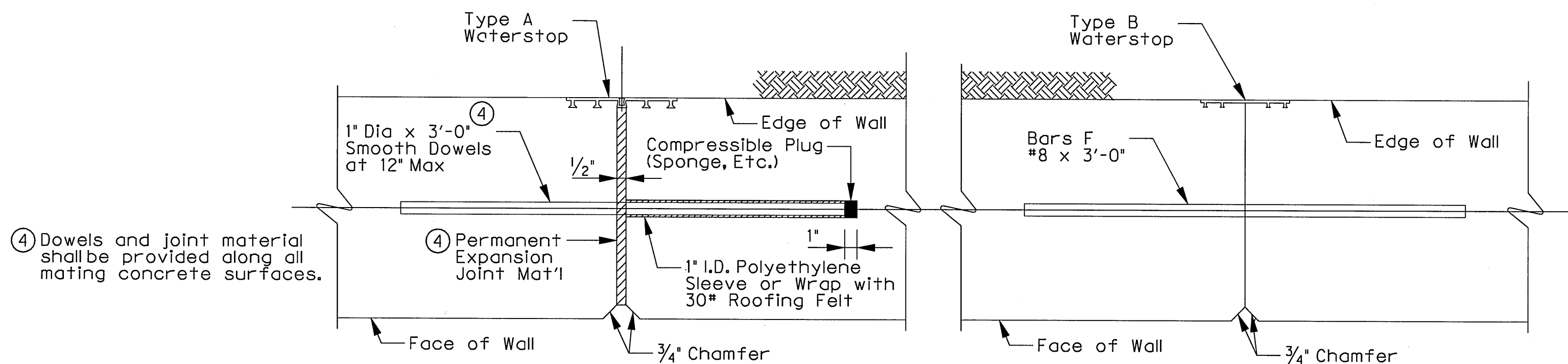
EQUIVALENT ACTIVE LATERAL FLUID PRESSURE	45 PCF
EQUIVALENT PASSIVE LATERAL FLUID PRESSURE	120 PCF
TOTAL SOIL UNIT WEIGHT	130 PCF
ALLOWABLE SOIL BEARING PRESSURE	1500 PSF
SURCHARGE	250 PSF
- COMPACTION WITHIN FIVE FEET OF WALLS SHALL BE ACHIEVED WITH HAND COMPACTION EQUIPMENT. THE CONTRACTOR SHALL RELEVEL ALL AREAS OF BACKFILL WHERE SETTLEMENT OCCURS. THIS WORK SHALL BE CONSIDERED INCIDENTAL, AND NOT A SEPARATE PAY ITEM.
- WEEPHOLE COVERING SHALL BE ONE OF THE FOLLOWING MATERIAL TYPES:
 - GALVANIZED STEEL WIRE CLOTH WITH 1/2" TO 1/4" MESH, MINIMUM WIRE DIAMETER 1/16".
 - STAINLESS STEEL TYPE 304 OR 316 WIRE CLOTH WITH 1/2" TO 1/4" MESH, MINIMUM WIRE DIAMETER 1/16".
 - POLYETHYLENE OR POLYPROPYLENE GEONET WITH 1/8" MINIMUM THICKNESS SUCH AS TENSAR DN-4 OR EQUAL.
- GEOTECHNICAL INFORMATION IS BASED ON A REPORT NO. E08-130 AND NO. E10-129 BY GEOTEL ENGINEERING DATED MARCH 6, 2008 AND APRIL 22, 2010, RESPECTIVELY.
- SELECT FILL WITHIN INDICATED AREAS SHALL CONSIST OF PIT RUN MATERIAL WITH A LIQUID LIMIT LESS THAN 40 AND A PLASTICITY INDEX LESS THAN 15. ALL BACKFILL SHALL BE SPREAD IN 8 INCH LOOSE LIFTS AND UNIFORMLY COMPACTED TO 95 PERCENT OF MAXIMUM STANDARD PROCTOR (ASTM D698) DRY DENSITY BETWEEN -2 AND +2 PERCENTAGE POINTS OF OPTIMUM MOISTURE CONTENT.
- PAYMENT FOR CONCRETE RETAINING WALLS WILL BE MADE IN ACCORDANCE WITH ITEM 423.5 AT THE UNIT PRICE BID PER SQUARE FOOT OF RETAINING WALL.



THE SEAL APPEARING ON THIS DOCUMENT WAS AUTHORIZED BY ERIC S. CHRISTIANSEN, P.E. #85412 ON 08-18-2010. ALTERATION OF A SEALED DOCUMENT WITHOUT PROPER NOTIFICATION TO THE RESPONSIBLE ENGINEER IS AN OFFENSE UNDER THE TEXAS ENGINEERING PRACTICE ACT. THE RECORD COPY OF THIS DRAWING IS ON FILE AT THE OFFICES OF HALFF ASSOCIATES, 1201 NORTH BOWSER ROAD, RICHARDSON, TEXAS, 75081. TPBE FIRM #F-312.

① EXISTING GRADES AND ELEVATIONS ARE APPROXIMATE AND ARE BASED ON INFORMATION PROVIDED BY ICON CONSULTING ENGINEERS, INC.

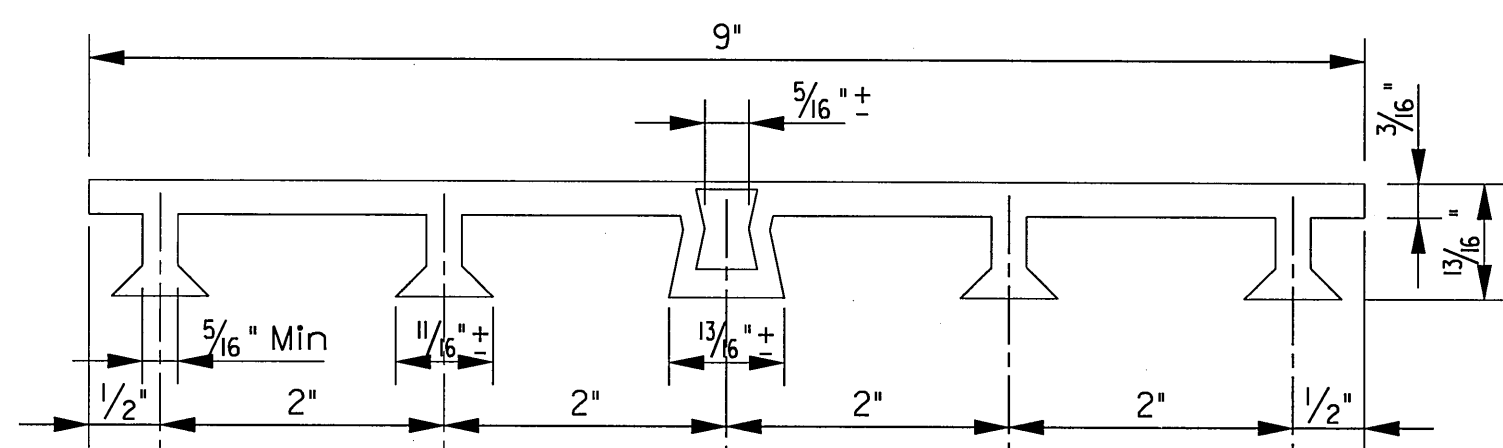
Addendum #5		ESC	08/18/10
NO.	REVISION	BY	DATE
TOWN OF ADDISON DALLAS COUNTY, TEXAS VITRUVIAN PARK BRIDGES BELLA LANE RETAINING WALL PLAN AND ELEVATION			
HALFF		1201 NORTH BOWSER ROAD, RICHARDSON, TEXAS 75081-2275 TEL (214) 346-8200 FAX (214) 738-0095	
PROJECT	DESIGN	DRAWN	DATE
27379	ESC	AHH	APRIL 2010
FILE	SHEET		
-	S2-22		



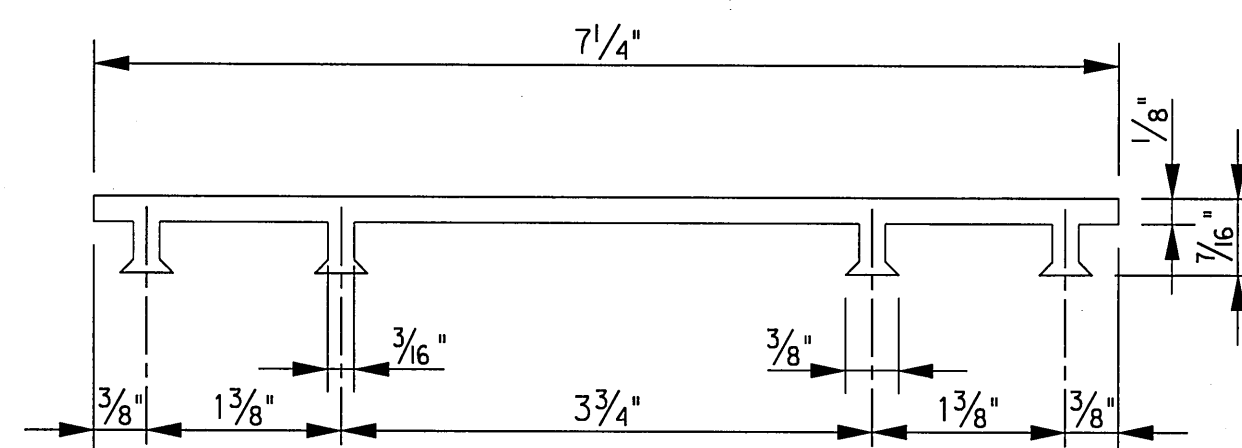
EXPANSION JOINT

CONSTRUCTION JOINT

④ Dowels and joint material shall be provided along all mating concrete surfaces.

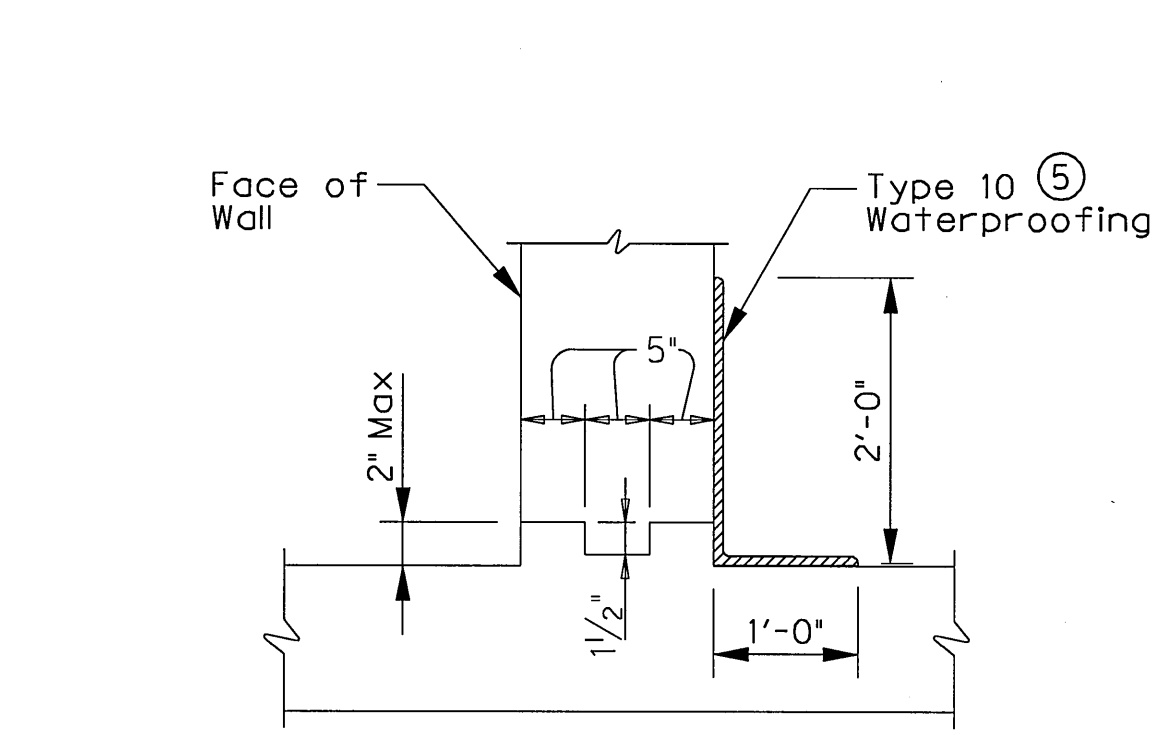


PVC WATERSTOP TYPE "A"

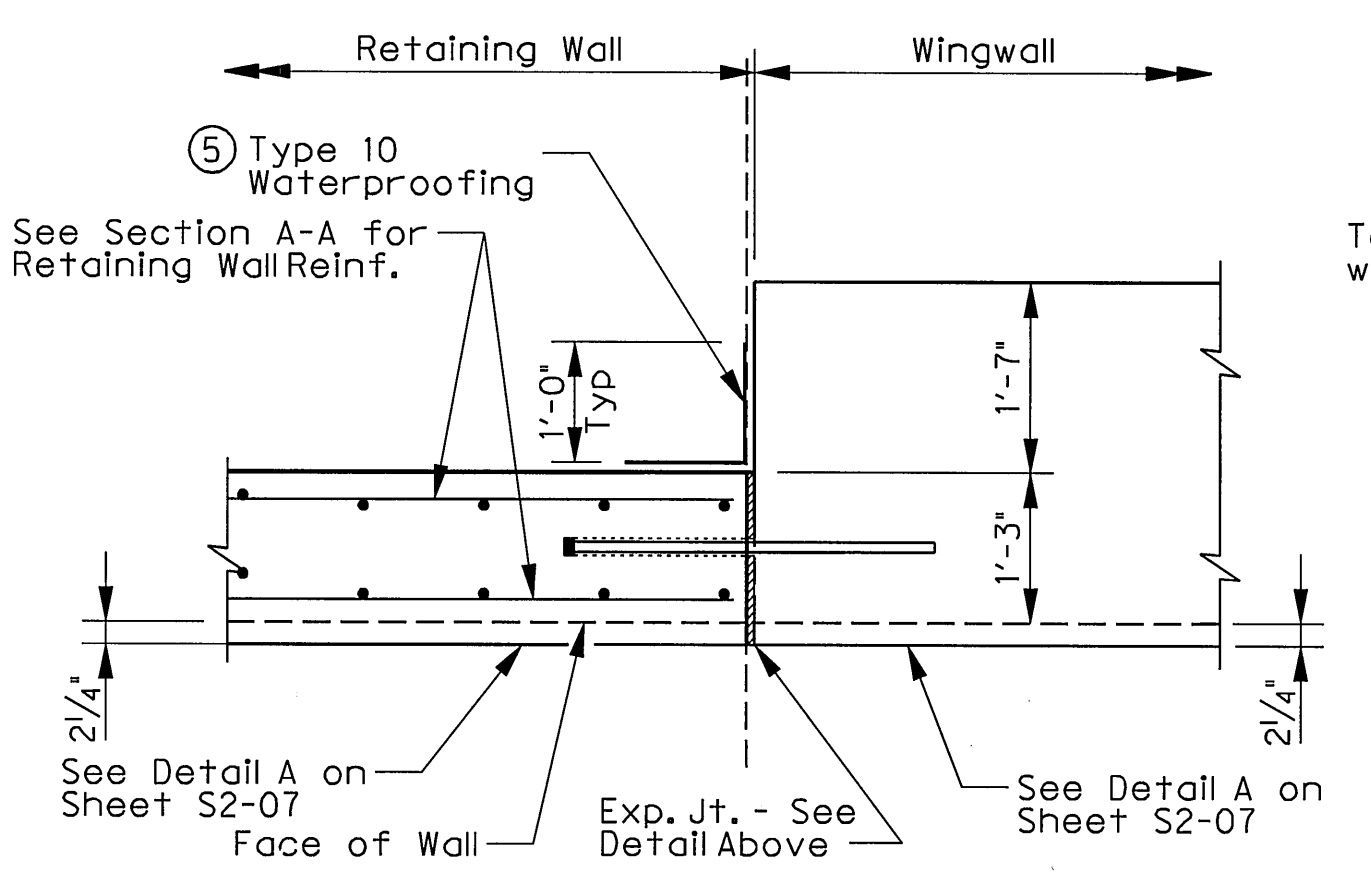


PVC WATERSTOP TYPE "B"

Note: Dimensions and shapes may vary slightly depending on manufacturer.

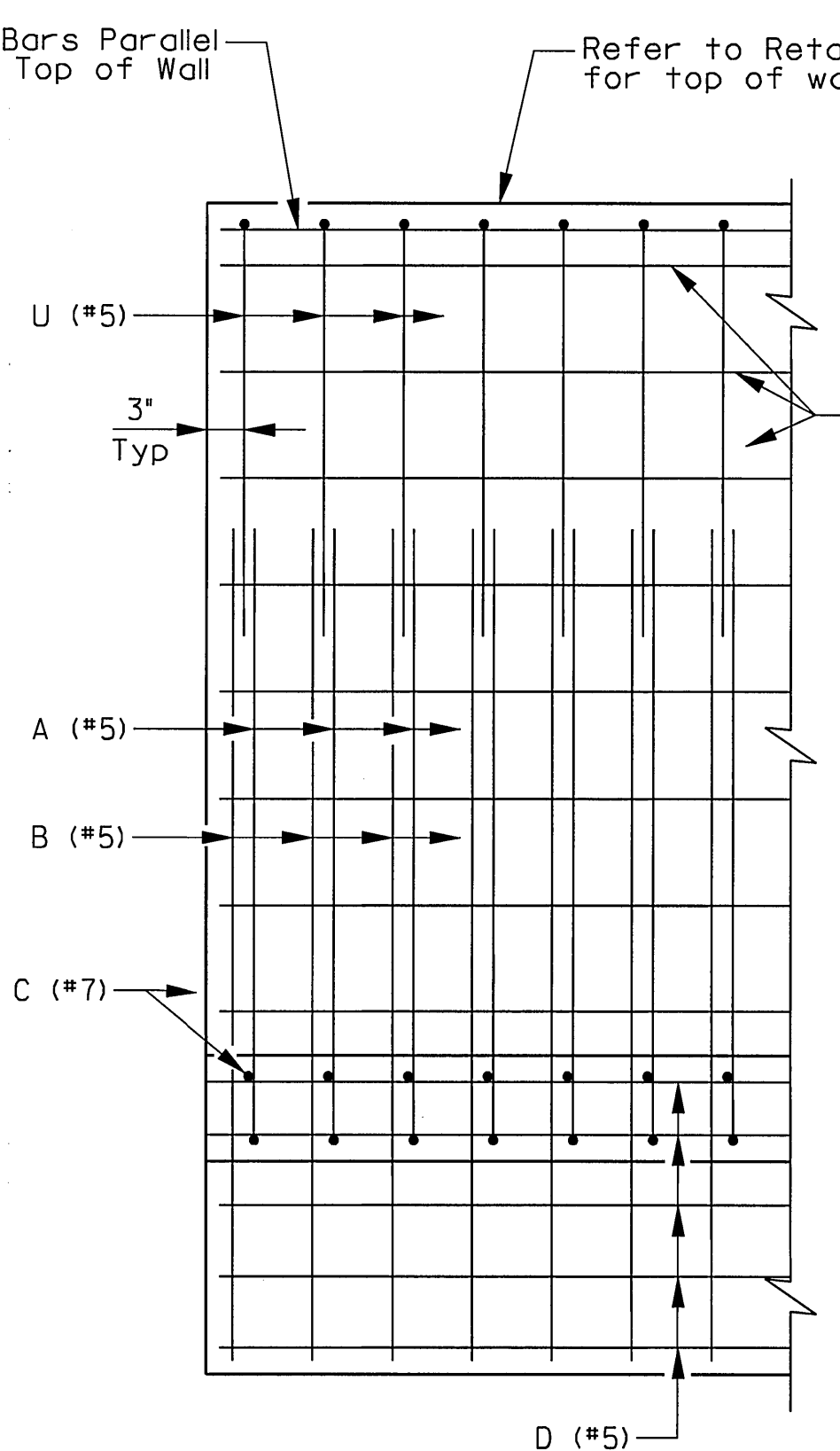
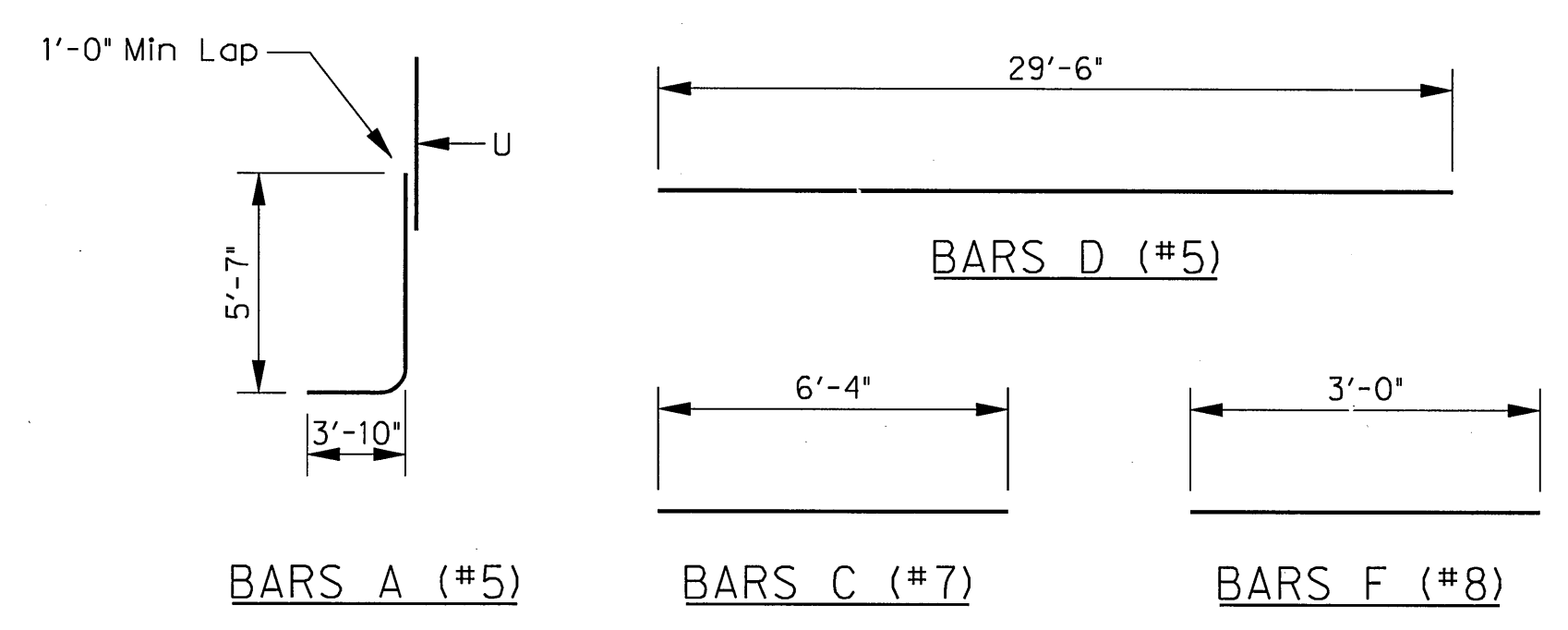


JOINT AND WATERSTOP DETAIL

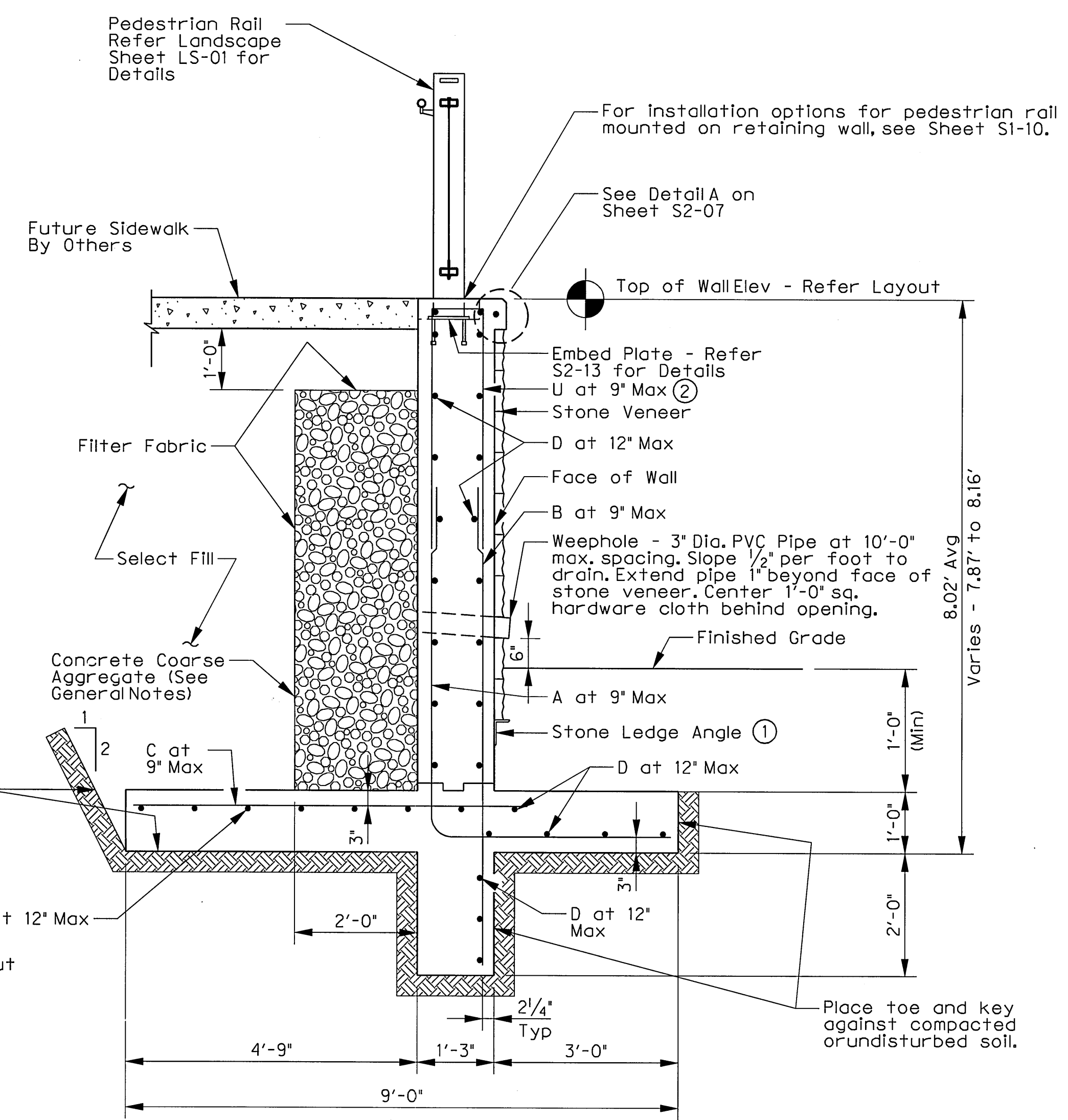


EXPANSION JOINT AT WINGWALL

⑤ See Item 458 in TxDOT specifications.



PARTIAL WALL DETAIL



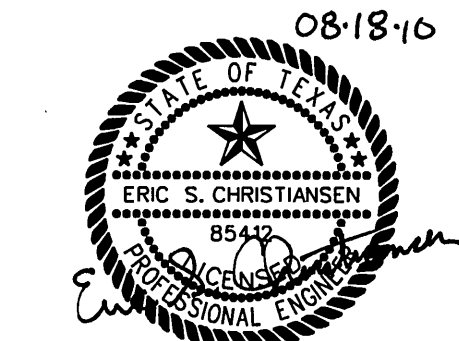
SECTION A-A

- ① Stone ledge angle shall be L5x3x1/4 with 1/2" dia Hilti Kwik Bolt 3 expansion anchors embedded a minimum of 3 1/2" and spaced at 1'-6" c-c. Refer to Landscape Sheets for location of stone veneer and stone ledges.
- ② U bars located at railpost connection shall be lowered to accommodate railpost embed plates and block-outs.

ESTIMATED QUANTITIES

Item	Unit	QUANTITY
③ C/C Conc Retaining Wall	CY	60.1
③ Reinf Steel	LB	5,480

③ For contractor's information only.



THE SEAL APPEARING ON THIS DOCUMENT WAS AUTHORIZED BY ERIC S. CHRISTENSEN, P.E. #95422 ON 08-18-2010. ALTERATION OF A SEALED DOCUMENT WITHOUT PROPER NOTIFICATION TO THE RESPONSIBLE ENGINEER IS AN OFFENSE UNDER THE TEXAS ENGINEERING PRACTICE ACT. THE RECORD COPY OF THIS DRAWING IS ON FILE AT THE OFFICES OF HALFF ASSOCIATES, 1201 NORTH BOWSER ROAD, RICHARDSON, TEXAS, 75081. TYPE FIRM "P-312."

Addendum #5		ESC	08/18/10
REVISION		BY	DATE
TOWN OF ADDISON DALLAS COUNTY, TEXAS			
VITRUVIAN PARK BRIDGES BELLA LANE			
RETAINING WALL DETAILS			
HALFF 1201 NORTH BOWSER ROAD, RICHARDSON, TEXAS 75081-2275 TEL (214) 346-6200 FAX (214) 739-0085			
PROJECT	DESIGN	DRAWN	DATE
27379	ESC	AHH	APRIL 2010
FILE	SHEET		
-	S2-23		

