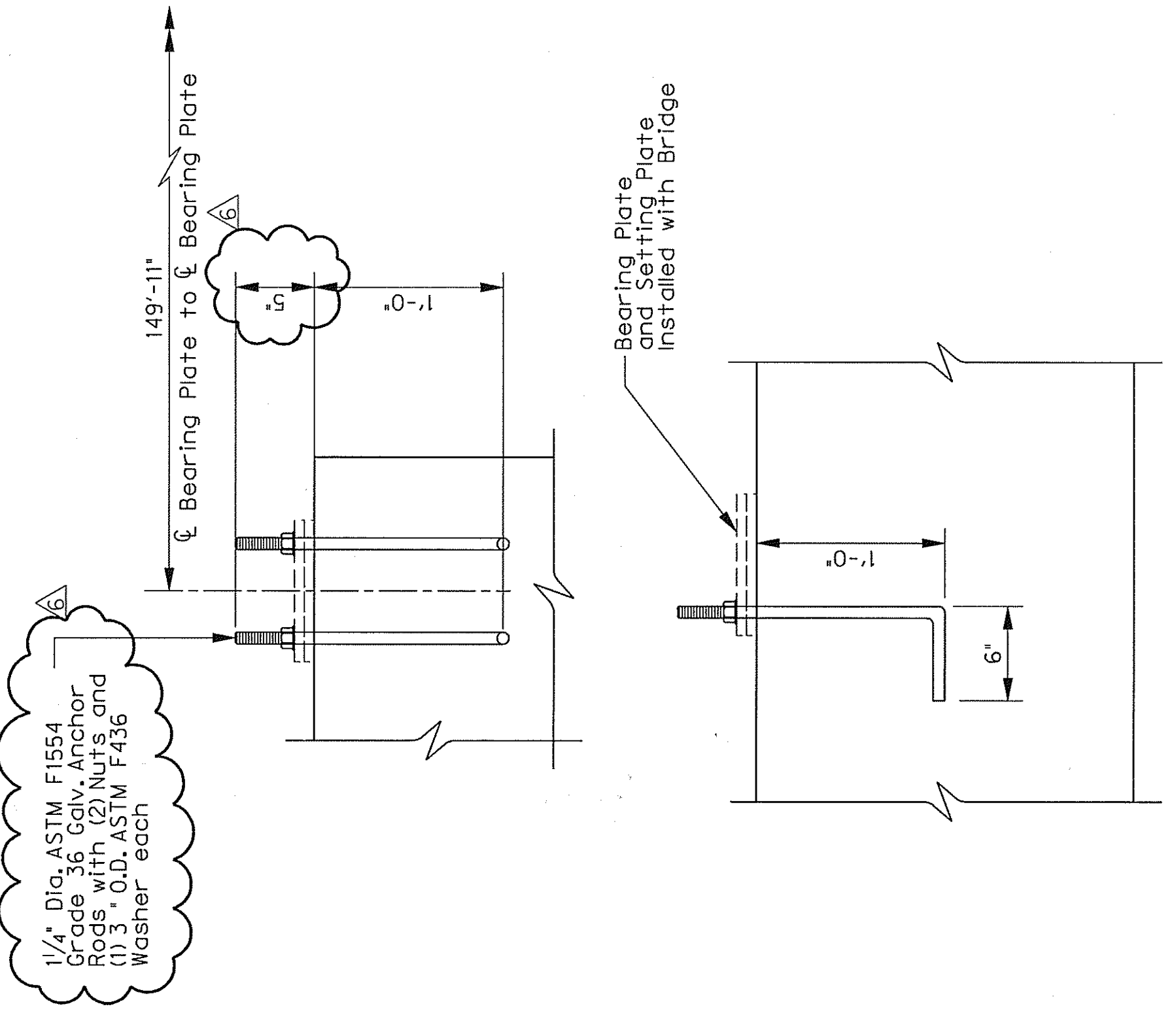
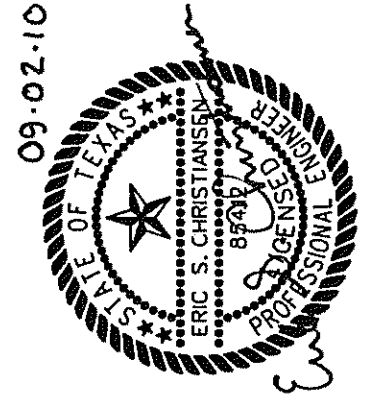


- ① Length of Drilled Shafts for Contractor's information only.
- ② Drill Shafts to the depth shown or deeper, as necessary, to Penetrate Gray Soils to Min Embed.



- NOTES:**
1. Abutment dimensions and anchor rod locations are to be coordinated with bridge manufacturer prior to construction. Abutment dimensions shown are per detail provided by CONTECH for Keystone Pedestrian Truss Bridge.
  2. Anchor Rods and Washers to be subsidiary to the concrete Abutment.



09-02-10

NO.	ADDENDUM #6	REVISION	BY	DATE
		ESC		9/02/10
<b>HALFF</b> TOWN OF ADDISON DALLAS COUNTY, TEXAS SOUTHERN PEDESTRIAN BRIDGE ABUTMENT PLAN ELEVATION AND DETAILS				
PROJECT	DESIGN	DRAWN	DATE	FILE
27379	ESC	AHH	APRIL 2010	-
				SHEET
				S3-03

1201 NORTH BOWSER ROAD, RICHARDSON, TEXAS 75081-2275  
TEL (214) 346-6200 FAX (214) 739-0895