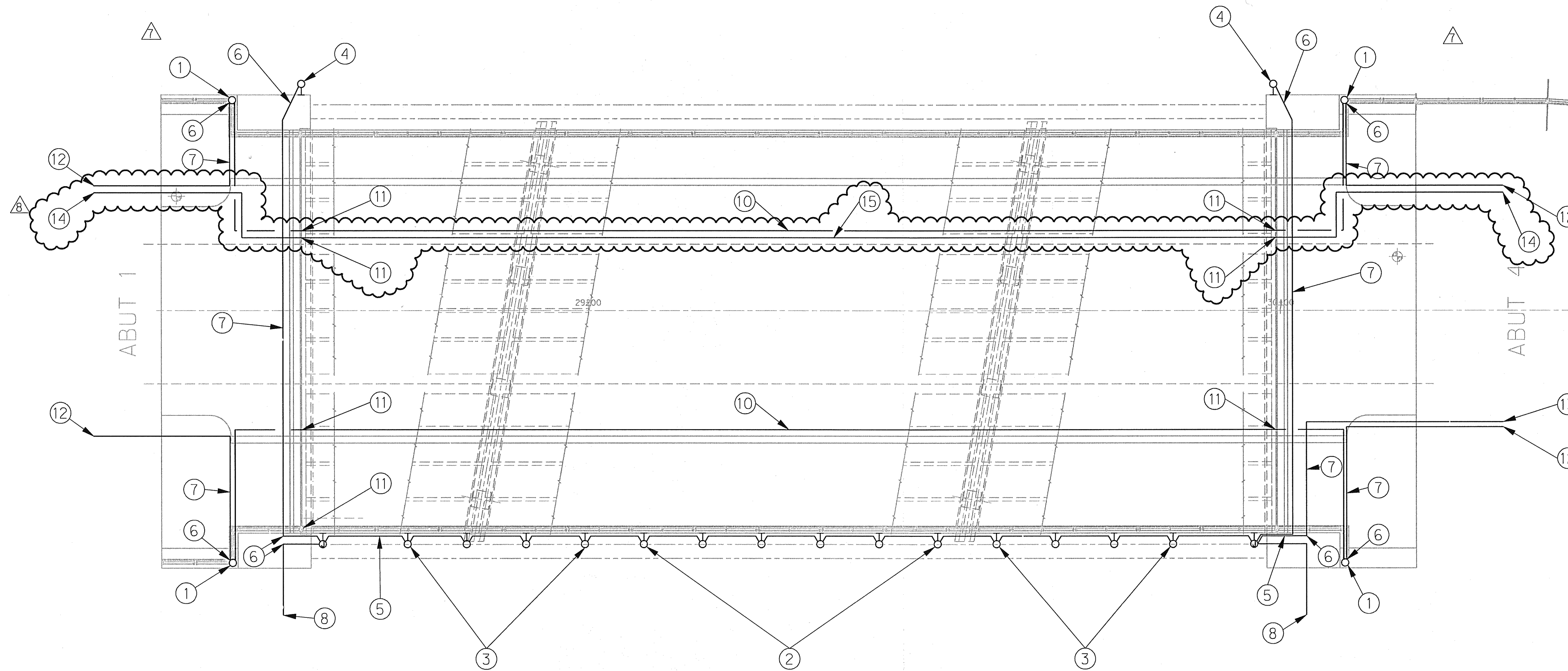


GENERAL NOTES

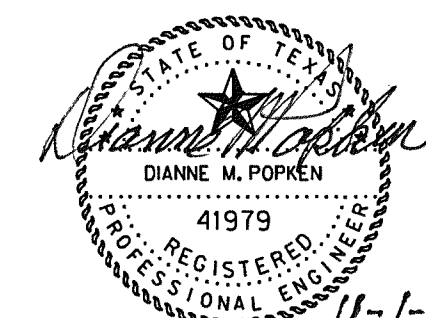
A. THE LIGHTING DESIGN FOR THE BELLA BRIDGE WILL REQUIRE SOME CHANGES TO THE PARK LIGHTING & ELECTRICAL DESIGN PREVIOUSLY REPRESENTED ON SHEET C801 OF THE PARK AND STREETScape IMPROVEMENTS FOR THE VITRUVIAN PARK PUBLIC INFRASTRUCTURE-PHASE 1C AND NOW SHOWN ON SHEET 23 OF THE PAVING DRAINAGE & UTILITY IMPROVEMENTS PHASE 1B. THE NECESSARY CHANGES IN THE 1B DESIGN WILL BE PERFORMED BY THE CONTRACTOR FOR PHASE 1B. THE CHANGES ARE REPRESENTED ON THIS DESIGN PLAN SO THE CONTRACTOR WILL HAVE ACCESS TO THE RELEVANT DATA FOR CONSTRUCTION COORDINATION.

B. PROVIDE ALL FIXTURES, RACEWAYS, CONDUCTORS, AND ACCESSORIES SCHEDULED AND SPECIFIED FOR THE BRIDGE.
 C. COORDINATE INSTALLATION WITH THE BRIDGE CONSTRUCTION.
 D. POWER TO SERVE LIGHTING ON THE BELLA BRIDGE IS IN THE PHASE 1B CONTRACT. REFERENCE THE LEGEND NOTES FOR THE SPECIFIC LIMITS OF CONSTRUCTION UNDER THIS CONTRACT.
 E. COORDINATE THE CONNECTION OF THE BRIDGE CIRCUITS TO THE PHASE 1B CIRCUITS WITH THE PHASE 1B CONTRACTORS.
 F. ALL CONDUITS SHALL BE CONCEALED IN THE BRIDGE CONSTRUCTION UNLESS OTHERWISE NOTED OR DETAILED. CONDUIT IN CONCRETE SHALL BE SCHEDULE 40 PVC. ALL EXPOSED CONDUIT SHALL BE RIGID GALVANIZED STEEL.
 G. FIXTURES TYPE SA1+BL1 AND SA3+BL1 ARE PROVIDED UNDER THE PARK IMPROVEMENTS CONTRACTS-PHASE 1C. TWO FLOOD LIGHTS (TYPE ABS 3) WILL BE ADDED TO EACH POLE AND FOCUSED ON THE UPPER PART OF THE OUTSIDE OF THE ARCH. PROVIDE EQUIPMENT AND LABOR FOR THE NIGHT-TIME SETTING OF THE TWO FIXTURES MOUNTED ON EACH POLE SA1-BL1 AND SA3-BL1.
 H. JUNCTION BOXES MOUNTED ON THE BRIDGE SHALL BE MALLEABLE IRON WITH HUBS FOR THREADED RIGID STEEL CONDUIT WITH WEATHERPROOF CAST COVER AND NEOPRENE GASKET.
 I. SUBMIT SHOP DRAWINGS FOR MOUNTING OF ALL FIXTURES AND THE ROUTE OF CONDUITS IN AND ON THE BRIDGE CONSTRUCTION.
 J. REFERENCE THE UTILITY IMPROVEMENTS PHASE 1B, REVISED SHEET 23 FOR CIRCUITS TO THE BRIDGE LIGHTING. THE UTILITY IMPROVEMENTS WILL PROVIDE CONDUCTORS AND FINAL CONNECTIONS TO THE STREET LIGHT ON THE BRIDGE AND IN THE ACCENT LIGHTING JUNCTION BOX.
 K. PROVIDE IN-LINE 20 AMP FUSES IN THE BASE OF FIXTURES TYPE B.



LEGEND NOTES

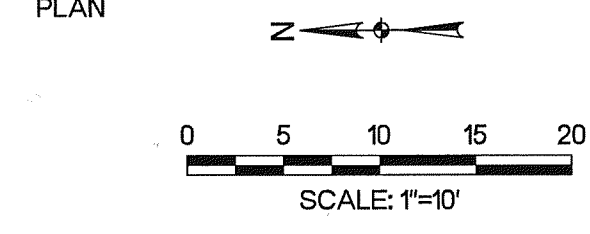
1. MOUNT FIXTURES TYPE B ON WING WALL. REFERENCE STRUCTURAL DETAIL FOR ANCHOR BOLT REQUIREMENT.
2. MOUNT FIXTURE TYPE D3 (TYPICAL OF 6) ON OUTSIDE OF BRIDGE DECK. REFERENCE DETAIL 02/E2.03.
3. MOUNT FIXTURES TYPE D4 (TYPICAL OF 8) ON THE OUTSIDE OF BRIDGE DECK. REFERENCE DETAIL 02/E2.03.
4. MOUNT FIXTURE TYPE D5 ON BRIDGE ABUTMENT. REFERENCE DETAIL 02/E2.03.
5. SURFACE MOUNT CONDUIT TO FIXTURES TYPE D ON EDGE OF BRIDGE BEAM. REFERENCE DETAIL 02/E2.03.
6. ROUTE CONDUIT CONCEALED DOWN IN WING WALL.
7. ROUTE CONDUIT BELOW APPROACH SLAB.
8. STUB OUT A 3/4" CONDUIT UNDERGROUND, WITH 24" COVER FOR PARK POLE FIXTURE TYPE SA.
9. APPROXIMATE LOCATION OF PARK FIXTURES SA1+BL1 AND SA3+BL1 ARE SHOWN.
10. ROUTE RIGID STEEL CONDUIT SURFACE MOUNTED IN SPACE BELOW DECK, BETWEEN BRIDGE BEAMS AND IN SPACE FOR 18" DIA. CARRIER PIPE. REFERENCE TYPICAL BRIDGE SECTION ON SHEET S2-02. CIRCUIT BETWEEN STREET LIGHTS ON BRIDGE SHALL BE 2 #6, #126 IN 1/4" C.
11. PROVIDE CONDUIT EXPANSION FITTING WHERE CONDUIT CROSSES BRIDGE EXPANSION JOINT.
12. CONNECT 1/4" C FROM POLE MOUNTED FIXTURE TYPE B TO STREET LIGHT CONDUIT. REF SHEET 23 OF THE PAVING, DRAINAGE & UTILITY IMPROVEMENTS, PHASE 1B. CIRCUIT SHALL BE 2 #6, #8G.
13. CONNECT 3/4" C TO BRIDGE ACCENT LIGHT CIRCUIT. THE CONTRACTOR FOR UTILITY IMPROVEMENTS WILL PULL CONDUCTORS TO JUNCTION BOX AND MAKE ALL FINAL CONNECTIONS IN THE JUNCTION BOX. ALL CIRCUITS FROM JUNCTION BOX TO FIXTURES SHALL BE 2 #12, #12C MINIMUM 1/2" C.
14. END AND PLUG 2" CONDUIT AT LEAST 10' BEYOND THE APPROACH SLAB WITH 24" COVER.
15. ROUTE RIGID STEEL CONDUIT SURFACE MOUNTED IN SPACE BELOW DECK, BETWEEN BRIDGE BEAMS AND IN SPACE FOR 18" DIA. CARRIER PIPE. REFERENCE TYPICAL BRIDGE SECTION ON SHEET S2-02.



THE SEAL APPEARING ON THIS DOCUMENT WAS AUTHORIZED BY DIANNE M. POPKEN, P.E. #41979 ON 11-01-2010. ALTERATION OF A SEALED DOCUMENT WITHOUT PROPER NOTIFICATION TO THE RESPONSIBLE ENGINEER IS AN OFFENSE UNDER THE TEXAS ENGINEERING PRACTICE ACT. THE RECORD COPY OF THIS DRAWING IS ON FILE AT THE OFFICES OF HALFF ASSOCIATES, 1201 NORTH BOWSER ROAD, RICHARDSON, TEXAS, 75081, TYPE FIRM #F-312.

01 ELECTRICAL SITE LAYOUT PLAN

SCALE: 1"=10'-0"



ADDENDUM #8	DMP	11/01/10			
ELECTRICAL SERVICE	DMP	10/06/10			
REVISION	BY	DATE			
HALFF TOWN OF ADDISON DALLAS COUNTY, TEXAS					
VITRUVIAN PARK BRIDGES BELLA LANE					
ELECTRICAL PLAN					
HALFF 7201 NORTH BOWSER ROAD, RICHARDSON, TEXAS 75081-2275 TEL (214) 346-6200 FAX (214) 739-0095					
PROJECT	DESIGN	DRAWN	DATE	FILE	SHEET
27379	DMP	AHH	APRIL 2010	-	E2-01