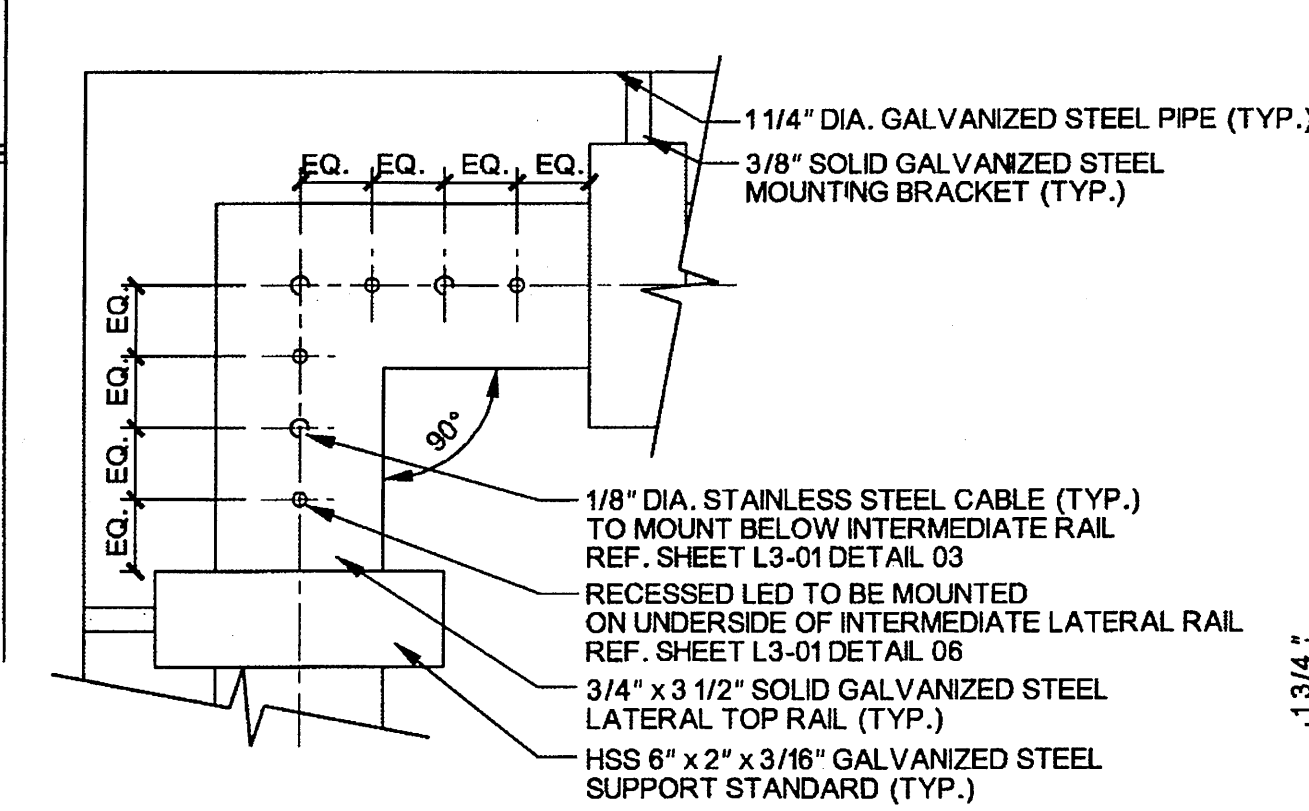
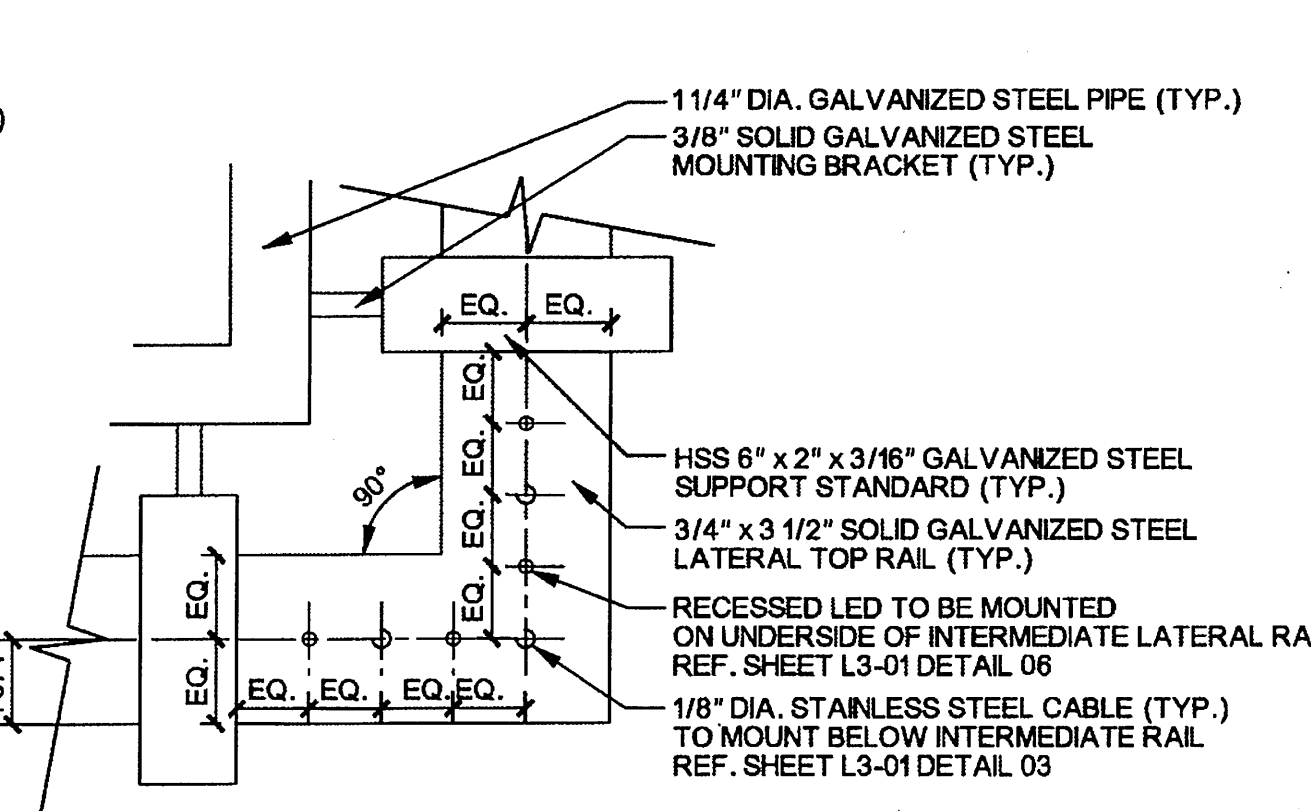


01 PIPE SPLICE (TYP.)
SCALE: 3"=1'-0"

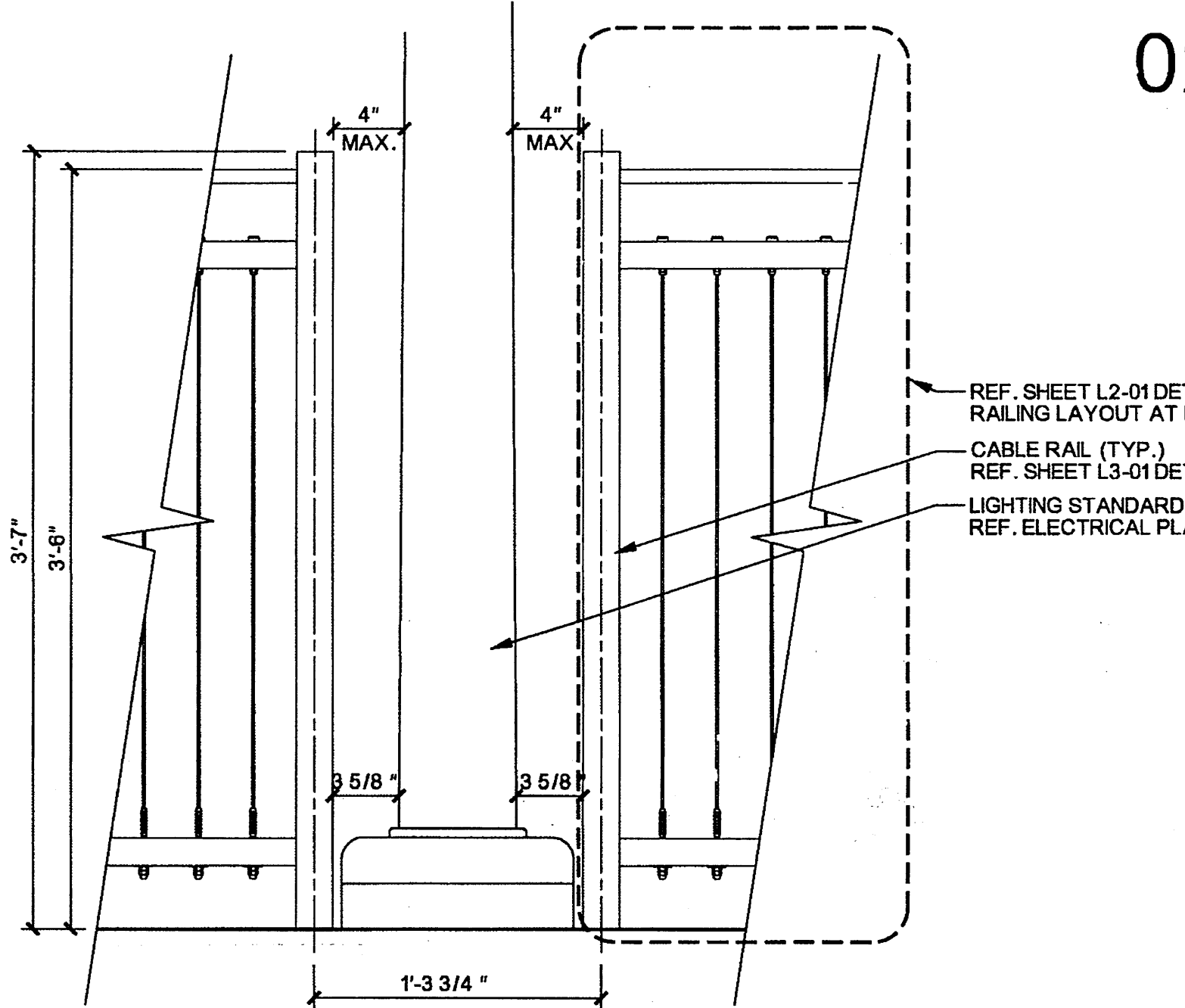
NOTE:
1. SPLICE PIPE AT BRIDGE EXPANSION JOINTS AND AT EACH DOUBLE SUPPORT STANDARD SECTION. REF. SHEET L3-01 DETAIL 02



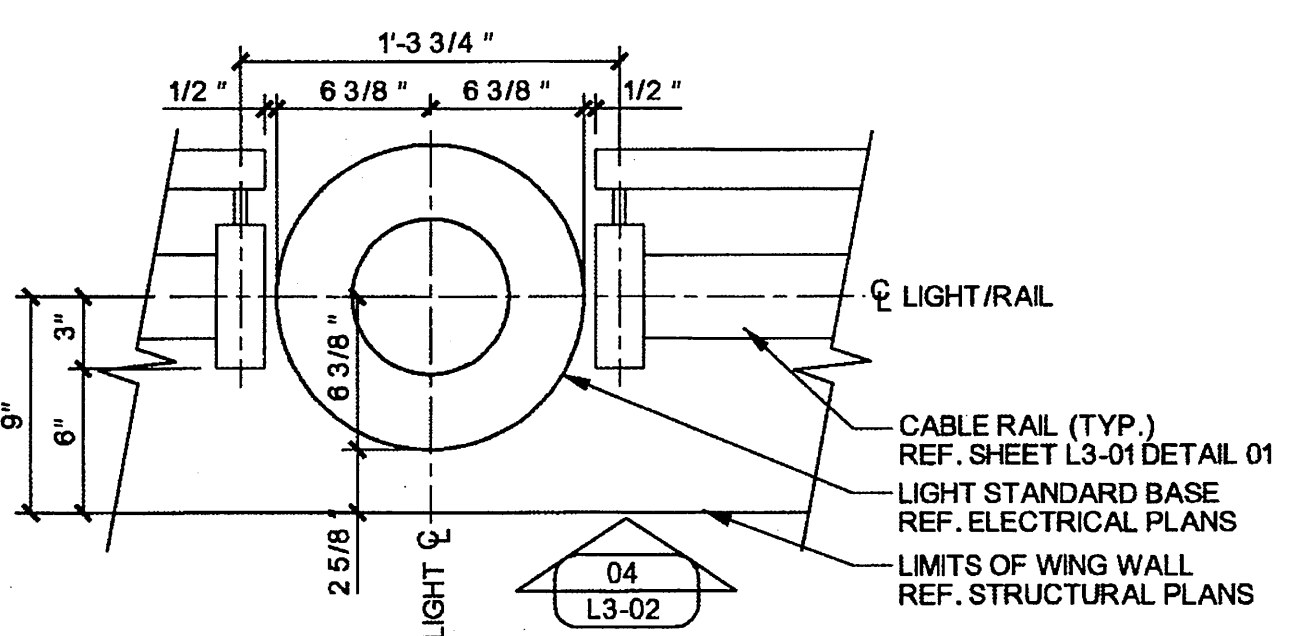
02 CORNER TREATMENT TYPE 'A'
SCALE: 3"=1'-0"



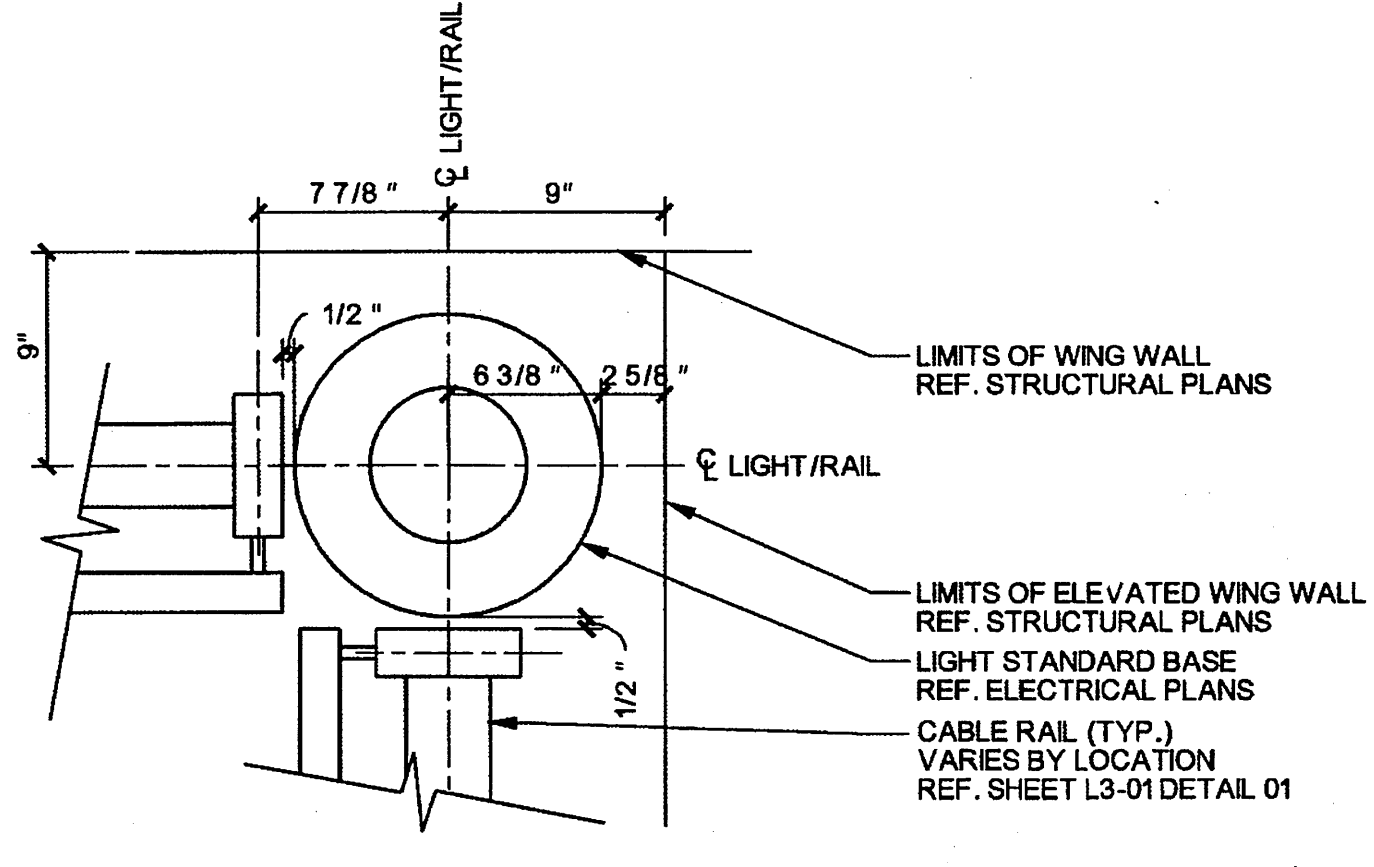
03 CORNER TREATMENT TYPE 'B'
SCALE: 3"=1'-0"



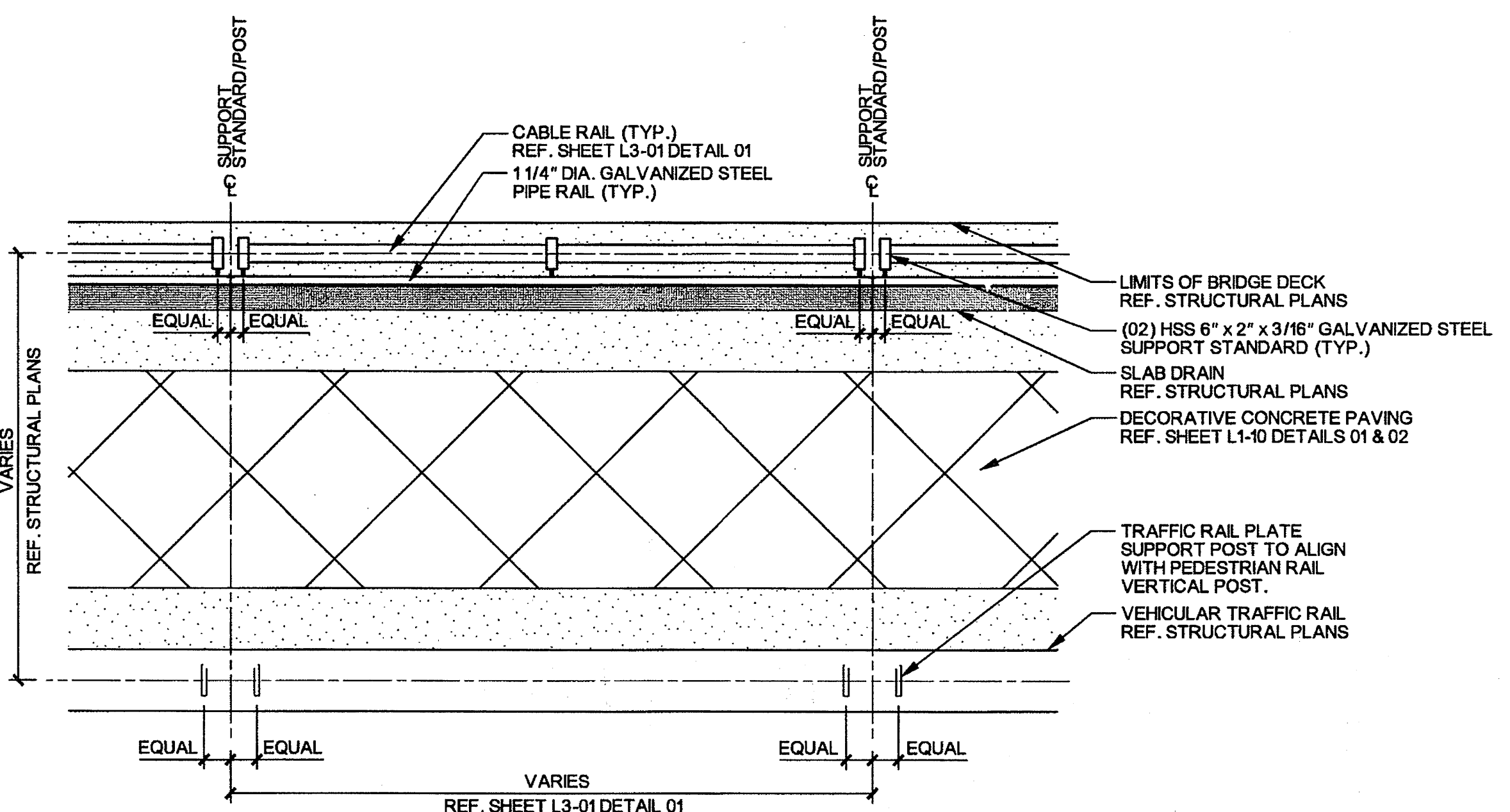
04 CABLE RAIL AT LIGHT STANDARD (TYP.)
SCALE: 1 1/2"=1'-0"



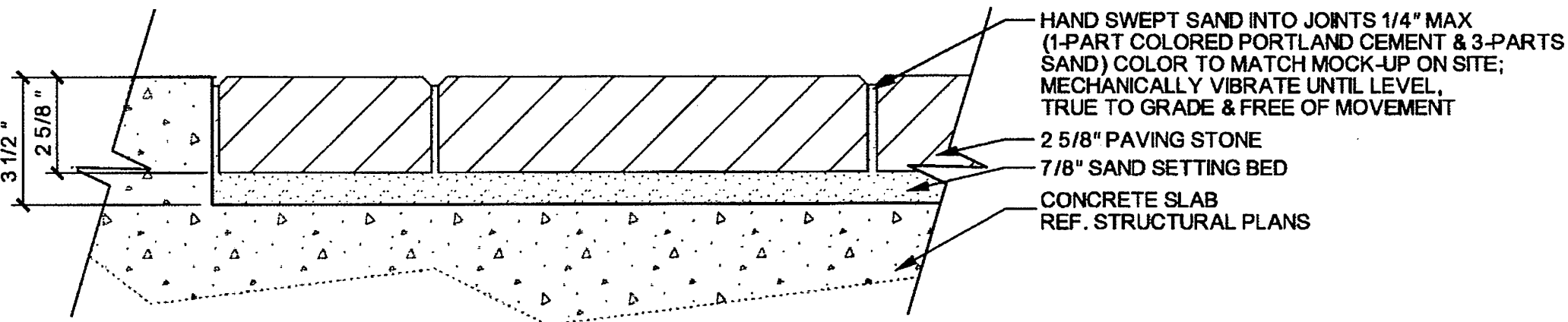
05 RAIL AT LIGHT STANDARD-PONTE (TYP.)
SCALE: 1 1/2"=1'-0"



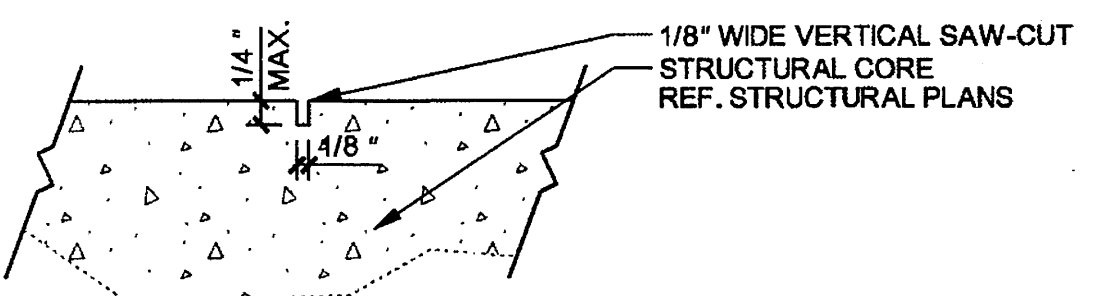
06 RAIL AT LIGHT STANDARD-BELLA (TYP.)
SCALE: 1 1/2"=1'-0"



07 SUPPORT ALIGNMENTS (TYP.)
SCALE: 1"=2'-0"



08 CONCRETE PAVER INLAY (TYP.)
SCALE: 3"=1'-0"



09 SAW CUT JOINT (TYP.)
SCALE: 1 1/2"=1'-0"

DESIGN SELECTION: PAVING

CONCRETE PAVERS:

CONCRETE PAVER TYPE 'A'
CITY STONE I
SIZE: 11 3/4" x 5 13/16" x 2 3/8"
COLOR: TRAVERTINE BLEND
PATTERN: HERRINGBONE

CONCRETE PAVER TYPE 'B'
CITY STONE I
SIZE: 11 3/4" x 5 13/16" x 2 3/8"
COLOR: BELLOW BROWN
PATTERN: SINGLE BRICK HEADER

CONCRETE PAVING:

CONCRETE PAVING TYPE 'A'
FINISH: HEAVY SANDBLAST
COLOR: ELEPHANT GREY

CONCRETE PAVING TYPE 'B'
FINISH: ROCK SALT
COLOR: ELEPHANT GREY
SAW-CUT PATTERN

PAVING GENERAL NOTES:

- SEE ON-SITE MOCK-UP FOR ALL REFERENCED CONCRETE AND STONE COLORS AND TEXTURES.
- CONTRACTOR TO PROVIDE A 4' x 4' MOCK-UP OF ALL REFERENCED CONCRETE PAVING AND PAVER COLOR, PATTERNS AND TEXTURES FOR APPROVAL PRIOR TO WORK COMMENCEMENT.

DESIGN SELECTION: RAILING

CONNECTORS / FITTINGS:

FIXED BUTTON HEAD CONNECTOR
MODEL #: 3287
CONTACT: FEEENEY ARCHITECTURAL PRODUCTS
OR APPROVED EQUAL

THREADED TERMINAL CABLE FITTING
MODEL #: 3191
CONTACT: FEEENEY ARCHITECTURAL PRODUCTS
OR APPROVED EQUAL

CABLES:

1/8" DIA. STAINLESS STEEL CABLE
MODEL #: 4140
CONTACT: FEEENEY ARCHITECTURAL PRODUCTS
OR APPROVED EQUAL

FEEENEY ARCHITECTURAL PRODUCTS
TRANG NGUYEN
1-800-888-2418
WWW.FEEENEY-ARCHITECTURAL.COM
OR APPROVED EQUAL

- RAILING GENERAL NOTES:**
- ALL STEEL COMPONENTS TO BE GALVANIZED UNLESS OTHERWISE NOTED.
 - ALL LATERAL AND INTERMEDIATE STEEL RAILS TO BE PARALLEL TO SIDEWALK SLOPES UNLESS OTHERWISE NOTED.
 - HSS 6" x 2" x 3/16" GALVANIZED STEEL SUPPORT STANDARDS TO BE PLUMB.
 - EXPOSED EDGES OF ALL STEEL MEMBERS SHALL BE ROUNDED TO MIN. 1/16" BY GRINDING UNLESS OTHERWISE NOTED.
 - ALL STANDARD TXDOT TYPE T401 VEHICULAR RAILING POSTS TO BE CENTERED WITH THE PEDESTRIAN RAIL STEEL SUPPORT STANDARDS AS SHOWN ON SHEET L3-02 DETAIL 07.
 - CONTRACTOR TO SUBMIT PEDESTRIAN RAIL SHOP DRAWINGS FOR APPROVAL.
 - MAXIMUM 4" SPACING BETWEEN ALL RAIL AND CABLE MEMBERS.
 - 3/16" WELD REQUIRED FOR ALL STEEL MEMBER CONNECTIONS UNLESS OTHERWISE NOTED.
 - REF. STRUCTURAL PLANS FOR ALL POST EMBEDMENT DETAILS.
 - CONTRACTOR TO PROVIDE A 20' CABLE RAIL MOCK-UP ON SITE FOR APPROVAL PRIOR TO WORK COMMENCEMENT.



THE SEAL APPEARING ON THIS DOCUMENT WAS AUTHORIZED BY LENNY L. HUGHES, R.L.A. #2067 ON 04-29-2010. ALTERATION OF A SEALED DOCUMENT WITHOUT PROPER NOTIFICATION TO THE RESPONSIBLE LANDSCAPE ARCHITECT IS AN OFFENSE UNDER THE TEXAS ENGINEERING PRACTICE ACT. THE RECORD COPY OF THIS DRAWING IS ON FILE AT THE OFFICES OF HALFF ASSOCIATES, INC., 1201 NORTH BOWSER, RICHARDSON, TEXAS 75081. T&E FIRM #F-312

NO.	REVISION	BY	DATE
Alignm. TOWN OF ADDISON DALLAS COUNTY, TEXAS			
VITRUVIAN PARK BRIDGES			
GENERAL DETAILS			
HALFF 1201 NORTH BOWSER ROAD, RICHARDSON, TEXAS 75081-2275 TEL (214) 348-6200 FAX (214) 738-0095			
PROJECT	DESIGN	DRAWN	DATE
27379	JDB	AHH	APRIL 2010
FILE	SHEET		
-	L3-02		