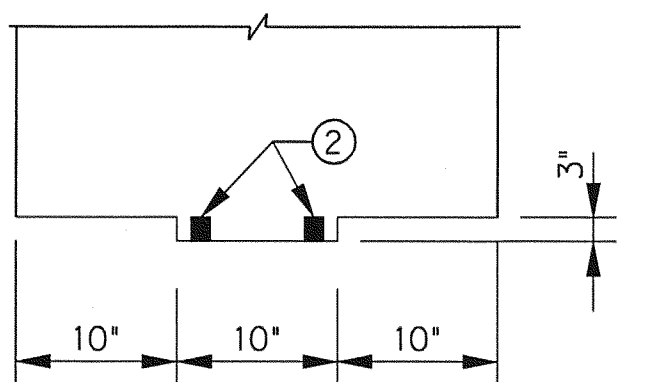
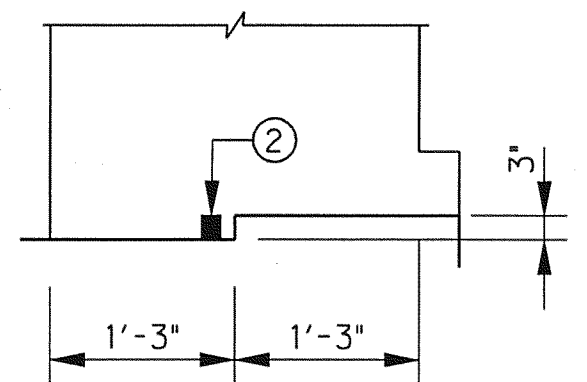
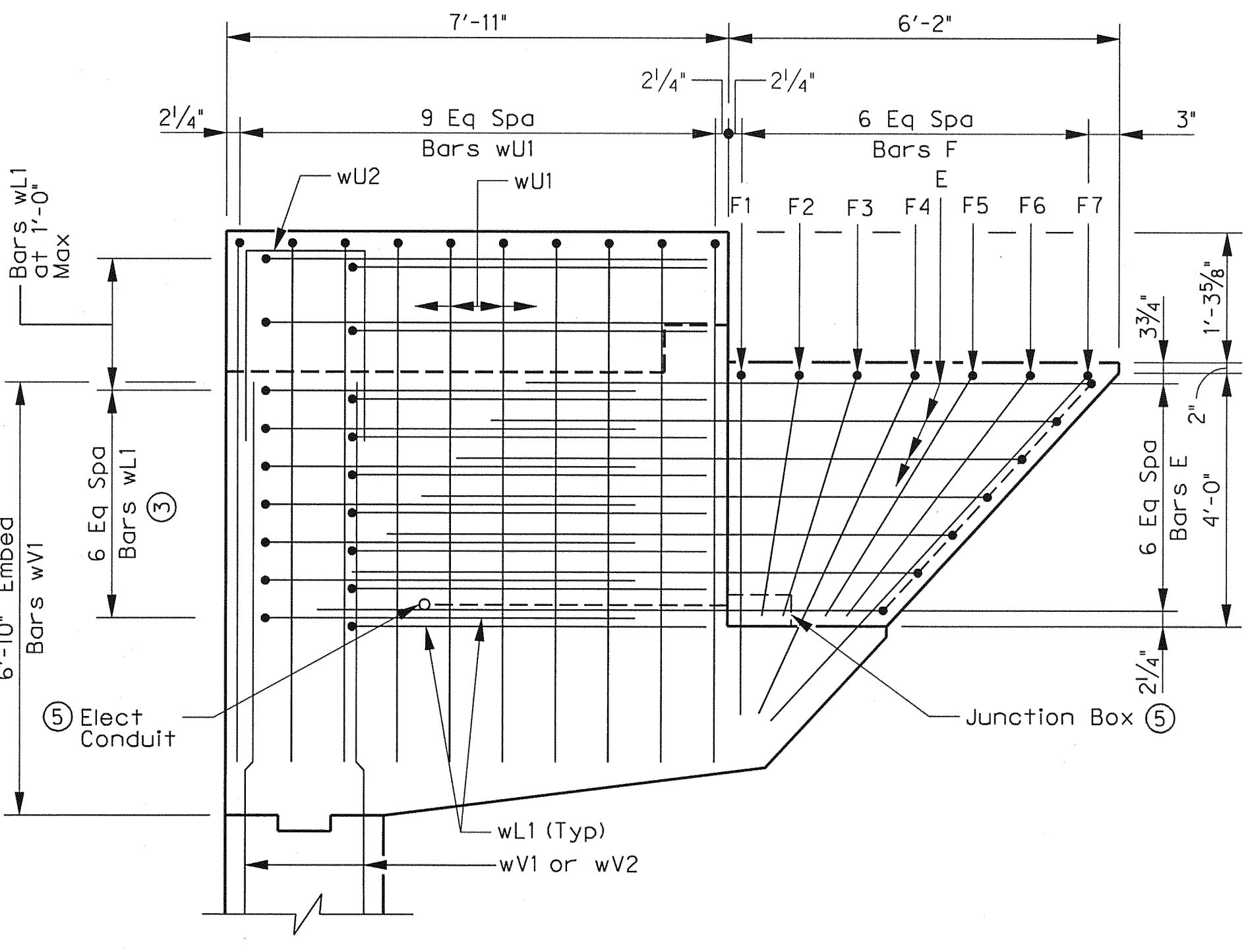
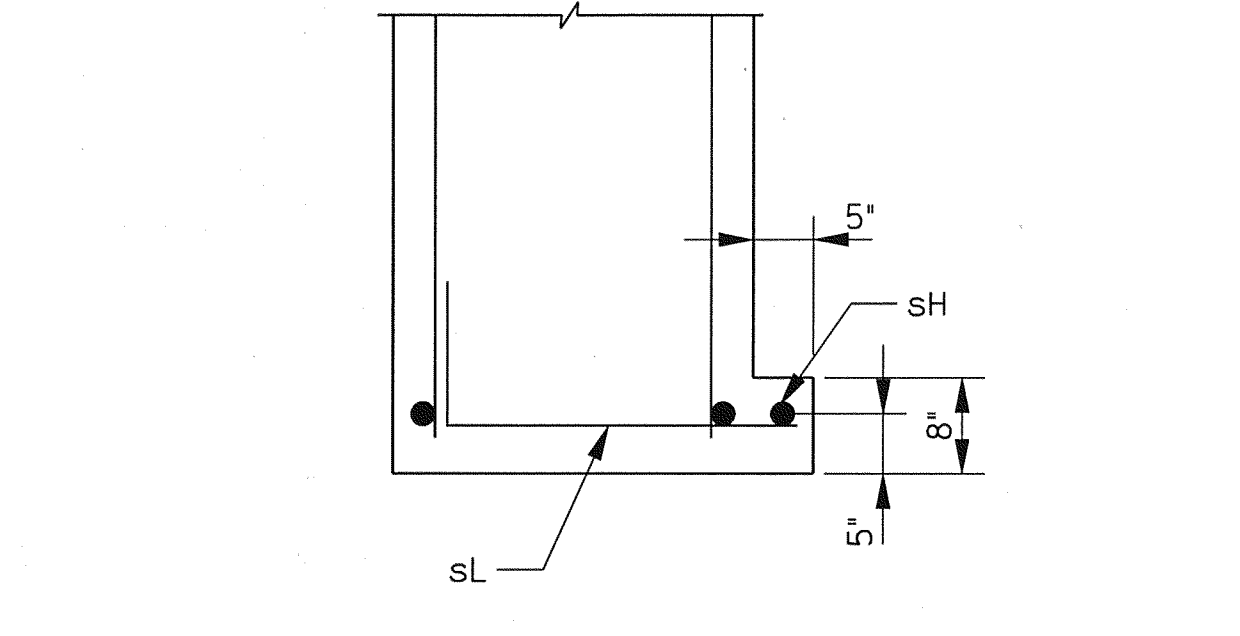
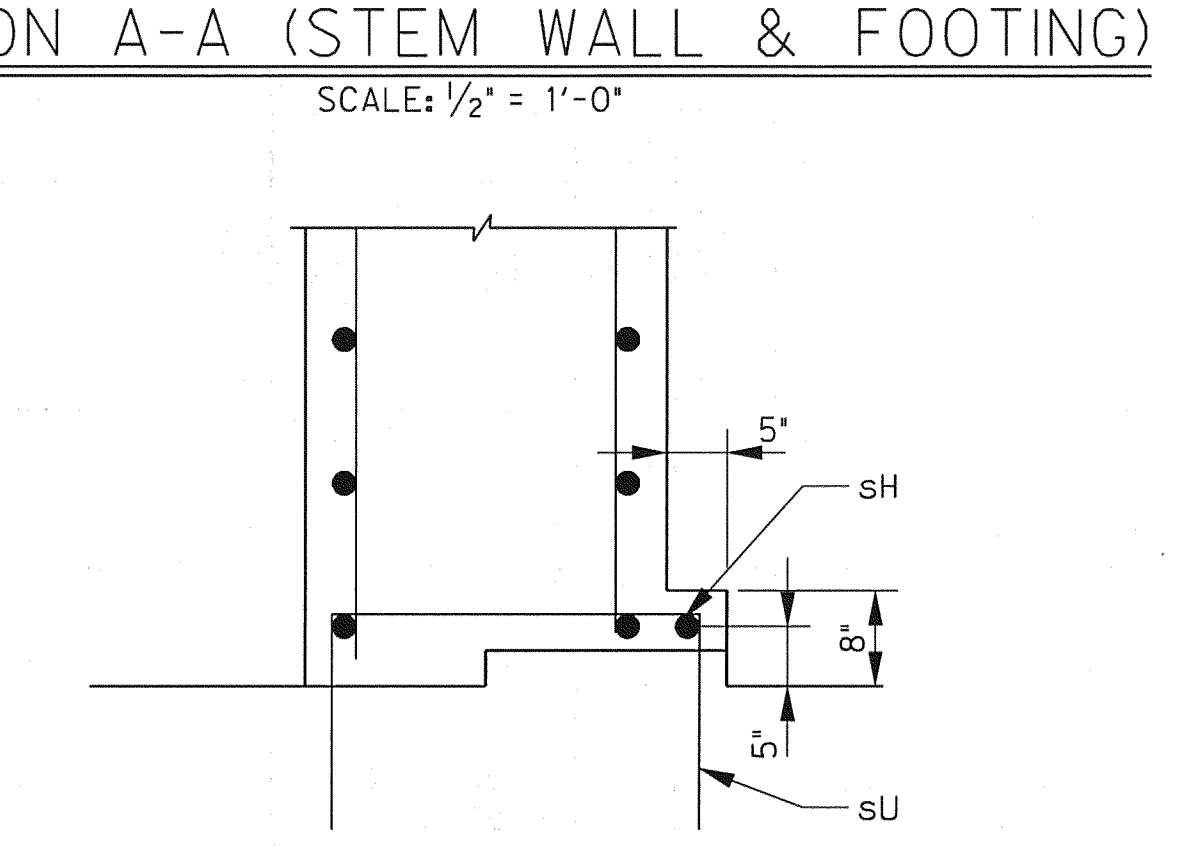
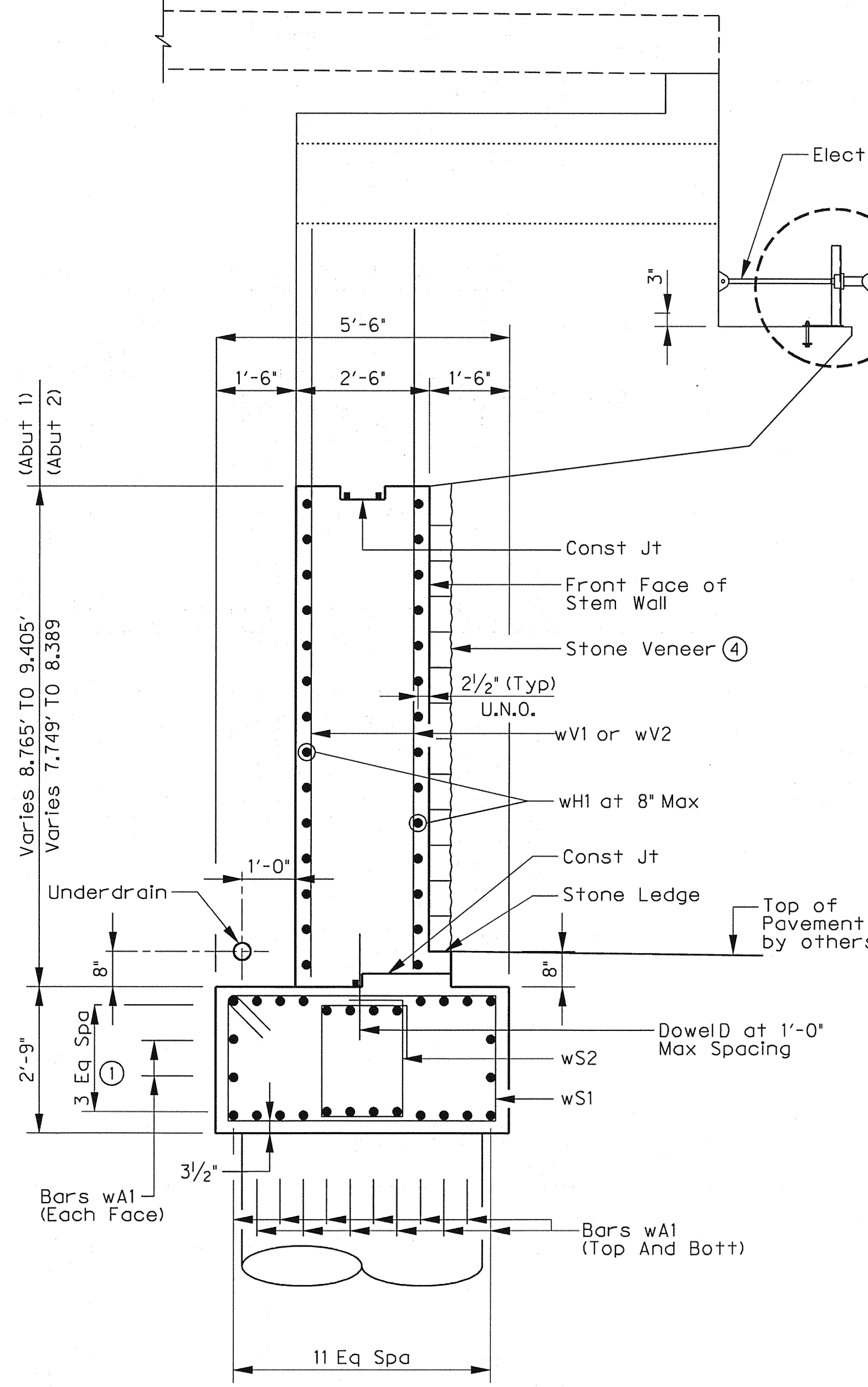


Notes:
All steel components shall be galvanized.
Two light mounting supports shall be located as follows on both abutments:
centered between Bm Nos 2 and 3
centered between Bm Nos 5 and 6



- Adjust top and bottom rows of Bars wA1 to allow for embedment of wA2 and wA3 from support wall and wingwall footings.
- Greenstreak 1" x 3/4" Lockstop waterstop or approved equal
- Lap Bars wL1 with Bars E where possible.
- See landscape architecture drawings for stone veneer details.
- See electrical drawings for details.



THE SEAL APPEARING ON THIS DOCUMENT WAS AUTHORIZED BY ERIC S. CHRISTIANSEN, P.E. #5412 ON 04-29-2010. ALTERATION OF A SEALED DOCUMENT WITHOUT PROPER NOTIFICATION TO THE RESPONSIBLE ENGINEER IS AN OFFENSE UNDER THE TEXAS ENGINEERING PRACTICE ACT. THE RECORD COPY OF THIS DRAWING IS ON FILE AT THE OFFICES OF HALFF ASSOCIATES, 1201 NORTH BOWSER ROAD, RICHARDSON, TEXAS 75081. TYPE, FIRM #2-312.

NO.	REVISION	BY	DATE		
TOWN OF ADDISON DALLAS COUNTY, TEXAS VITRUVIAN PARK BRIDGES PONTE AVENUE					
ABUTMENT DETAILS - SECTIONS					
1201 NORTH BOWSER ROAD, RICHARDSON, TEXAS 75081-2275 TEL (214) 346-6200 FAX (214) 738-0085					
PROJECT	DESIGN	DRAWN	DATE	FILE	SHEET
27379	ESC	AHH	APRIL 2010	-	S1-07