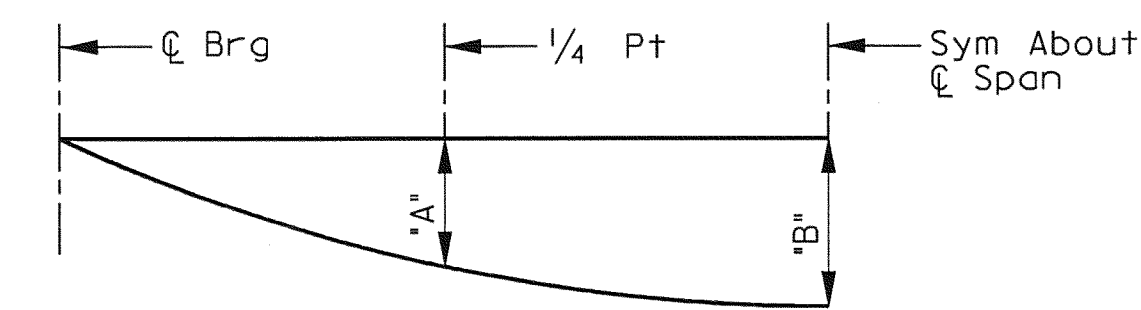


FRAMING PLAN

SCALE: 1" = 10'-0"

Dimensions shown thus <XXX.XXX'> represents horizontal beam length between front faces of abutment backwalls.

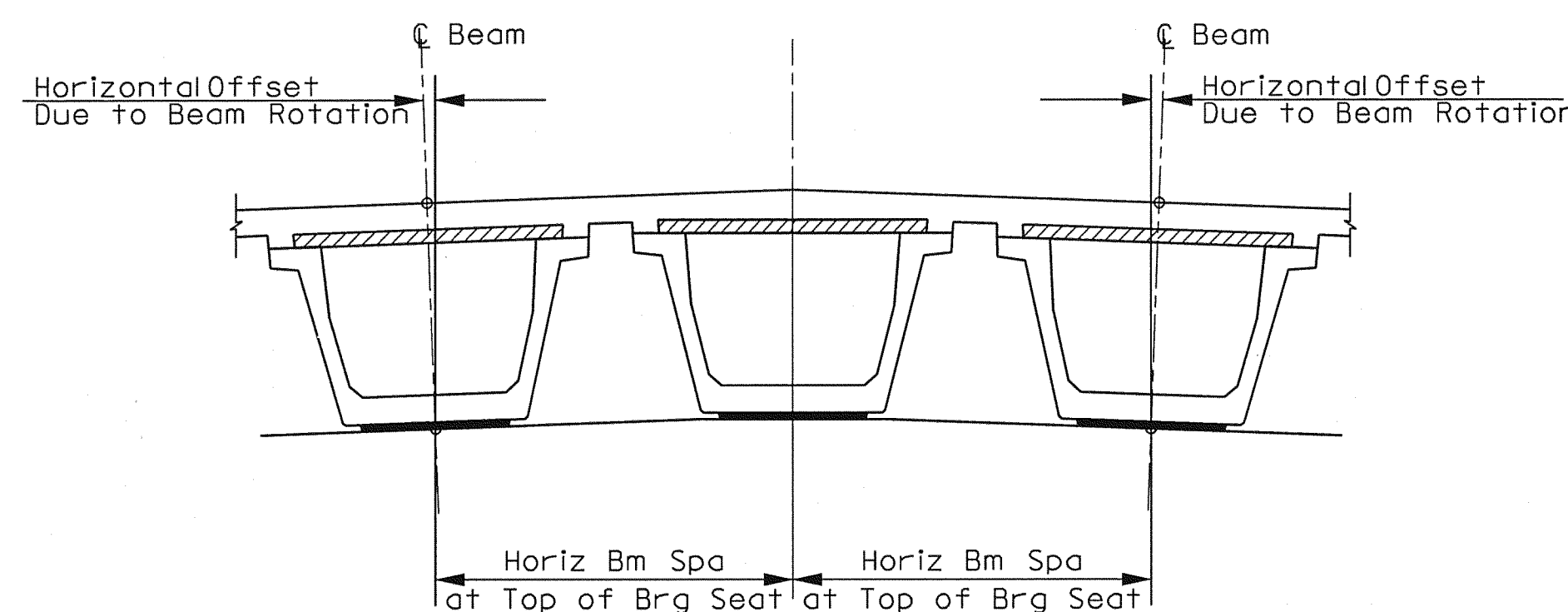


DEAD LOAD DEFLECTION DIAGRAM

Note: Deflections shown are due to concrete slab only (Ec = 5 x 10⁶ psi). Calculated deflections shown are theoretical; actual dimensions may be less.

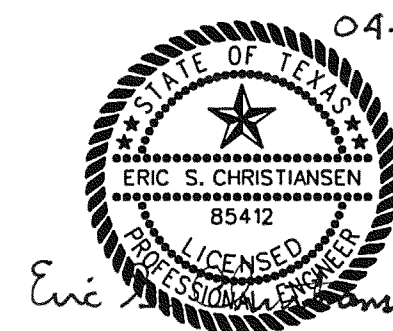
TABLE OF BEAM LENGTHS AND DEAD LOAD DEFLECTIONS				
Span No.	Beam No.	"A"	"B"	Length
		FT	FT	
1	1 & 7	0.156	0.219	126.500
	2 & 6	0.133	0.187	126.500
	3 & 5	0.136	0.191	126.500
	4	0.136	0.191	126.500

Note: All girder lengths are horizontal length end to end of girder.



BEAM SPACING DETAIL

SCALE: NTS



04-29-10

THE SEAL APPEARING ON THIS DOCUMENT WAS AUTHORIZED BY ERIC S. CHRISTENSEN, P.E. #85412 ON 04-29-2010. ALTERATION OF A SEALED DOCUMENT WITHOUT PROPER NOTIFICATION TO THE RESPONSIBLE ENGINEER IS AN OFFENSE UNDER THE TEXAS ENGINEERING PRACTICE ACT. THE RECORD COPY OF THIS DRAWING IS ON FILE AT THE OFFICES OF HALFF ASSOCIATES, 1201 NORTH BOWSER ROAD, RICHARDSON, TEXAS, 75081. TPCE FIRM #F-312.

NO.	REVISION	BY	DATE
TOWN OF ADDISON DALLAS COUNTY, TEXAS			
VITRUVIAN PARK BRIDGES PONTE AVENUE			
FRAMING PLAN			
HALFF 1201 NORTH BOWSER ROAD, RICHARDSON, TEXAS 75081-2275 TEL (214) 346-6200 FAX (214) 739-0095			
PROJECT	DESIGN	DRAWN	DATE
27379	ESC	AHH	APRIL 2010
FILE	SHEET		
-	S1-15		