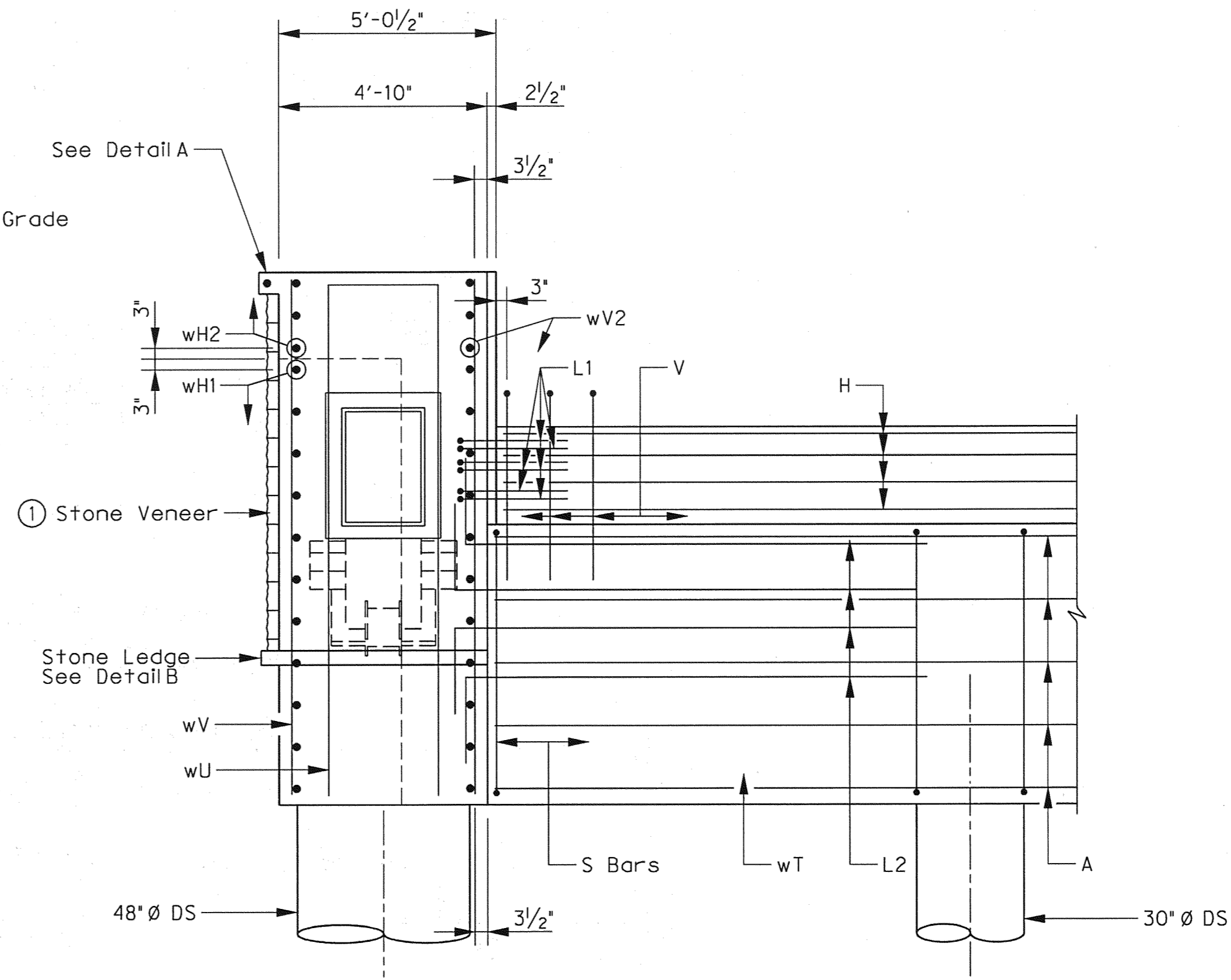
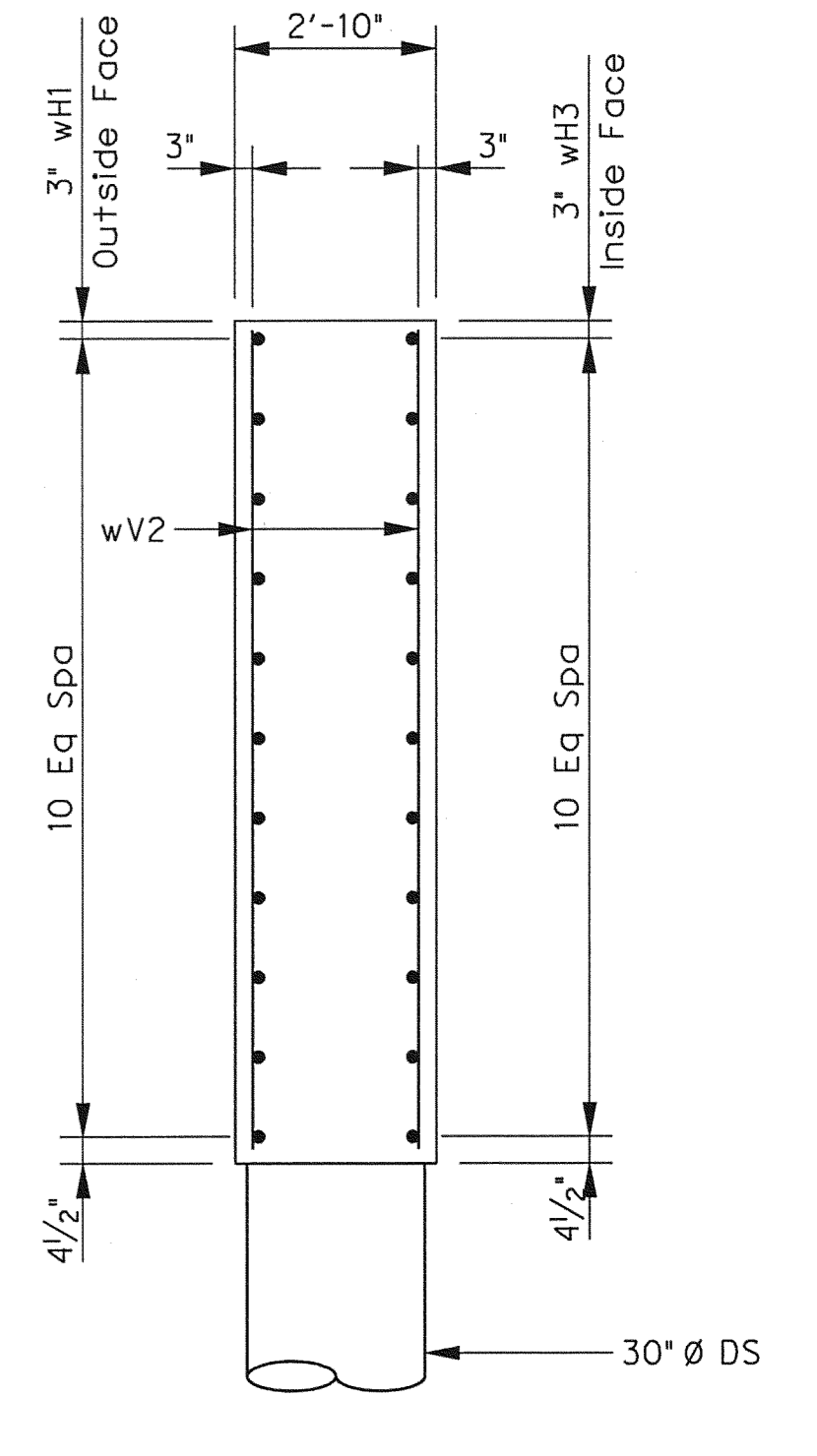


WINGWALL ELEVATION
SCALE: 3/8" = 1'-0"



SECTION A-A
SCALE: 3/8" = 1'-0"



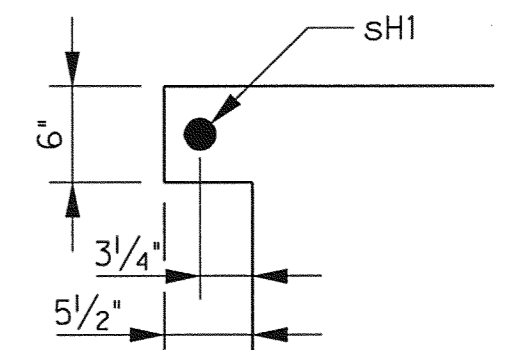
SECTION B-B
SCALE: 3/8" = 1'-0"

③ Precast ledge to be installed after arch is erected. See Note 2 below for attachment.

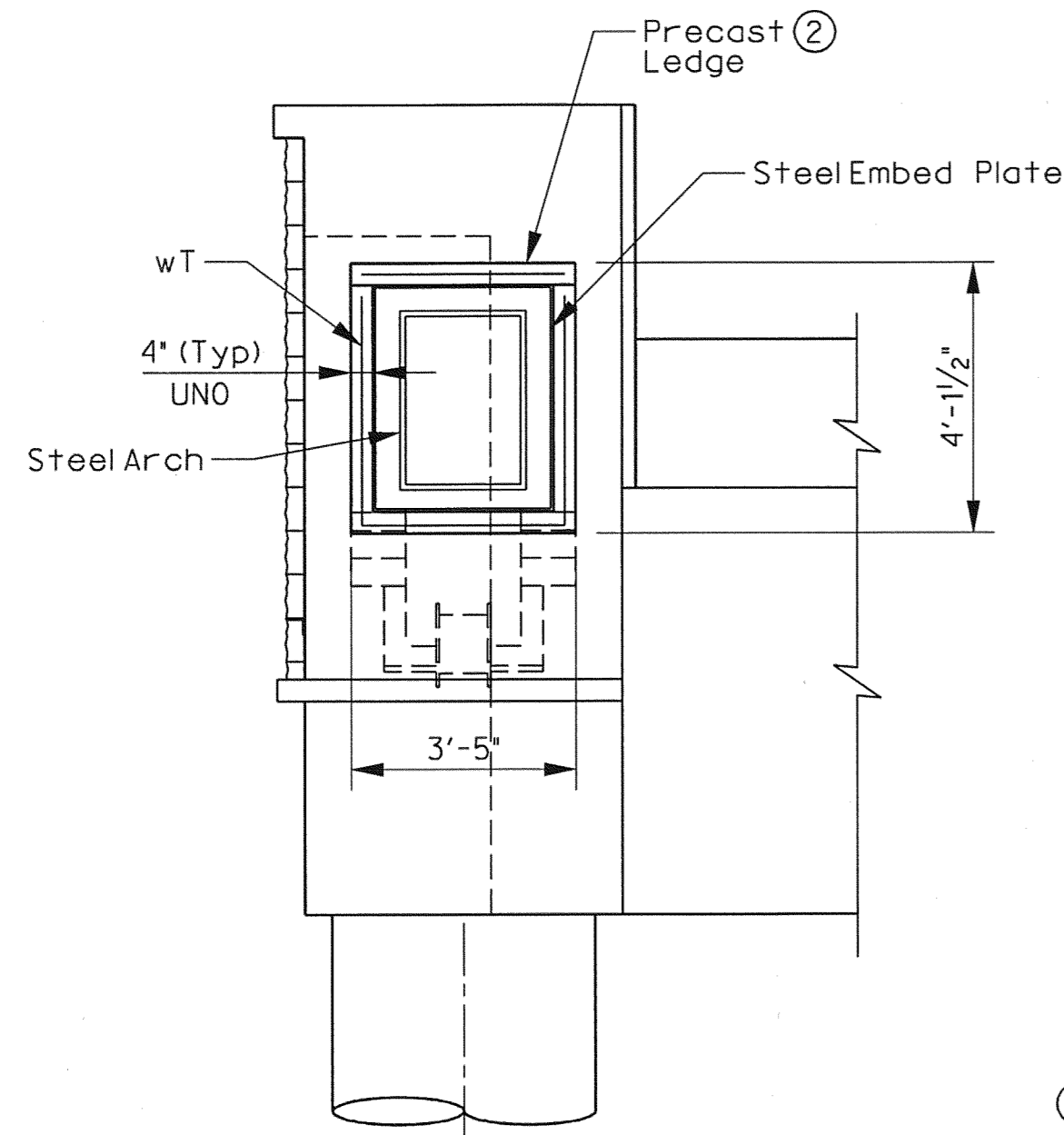
① Stone ledge shall be a 5 x 5 x 3/8" angle with 1/2" Ø Hilti kwik Bolt 3 expansion anchors embedded a minimum of 3/2" and spaced at 1'-6" C.C. Refer to landscape architecture sheets for location of stone veneer and stone ledges.

TABLE A - WINGWALL LEDGE ELEVATIONS

NORTH ABUTMENT		SOUTH ABUTMENT	
EAST WW	WEST WW	EAST WW	WEST WW
557.0	555.0	557.0	555.0

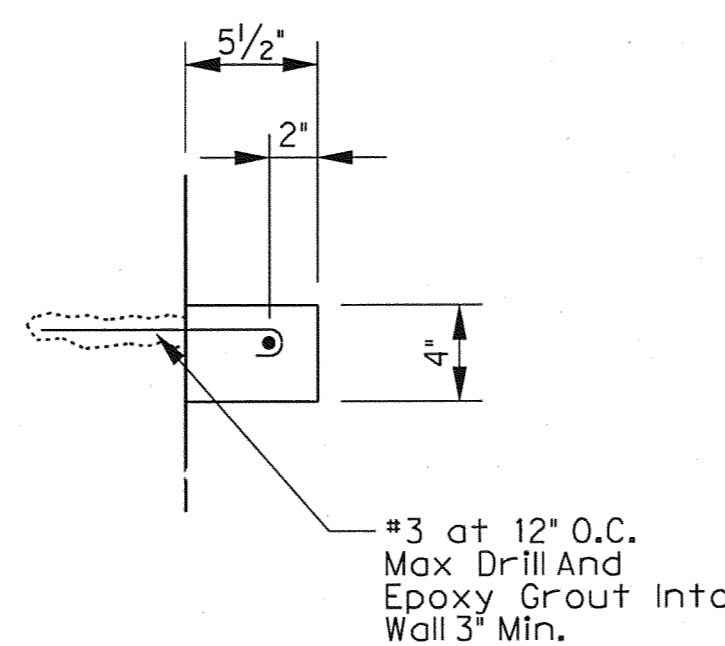


DETAIL A
SCALE: 3/8" = 1'-0"

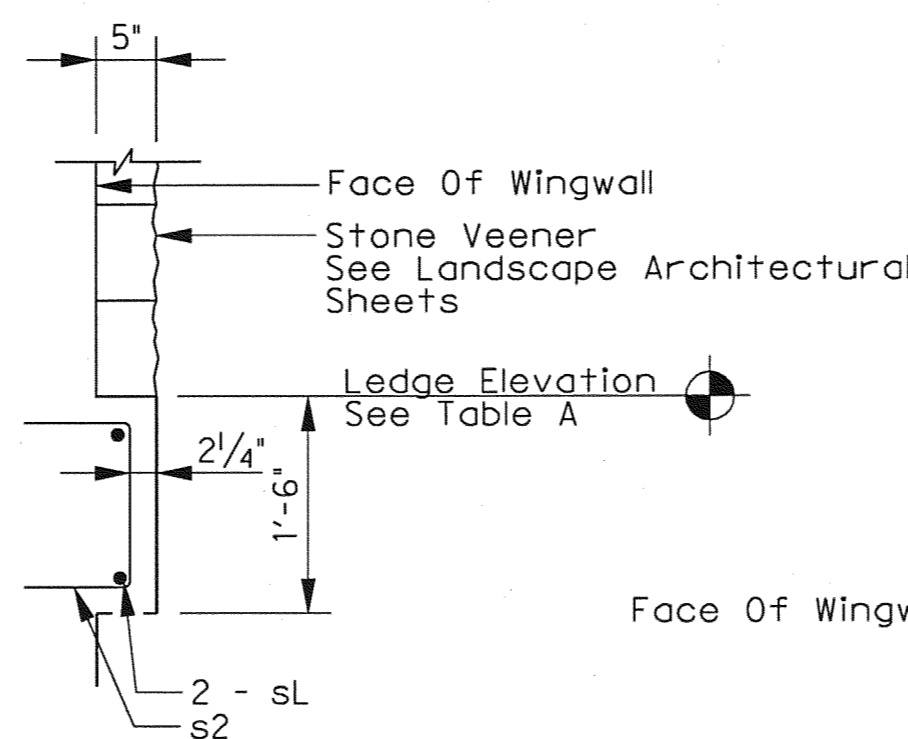


STONE COLLAR DETAILS
SCALE: 3/8" = 1'-0"

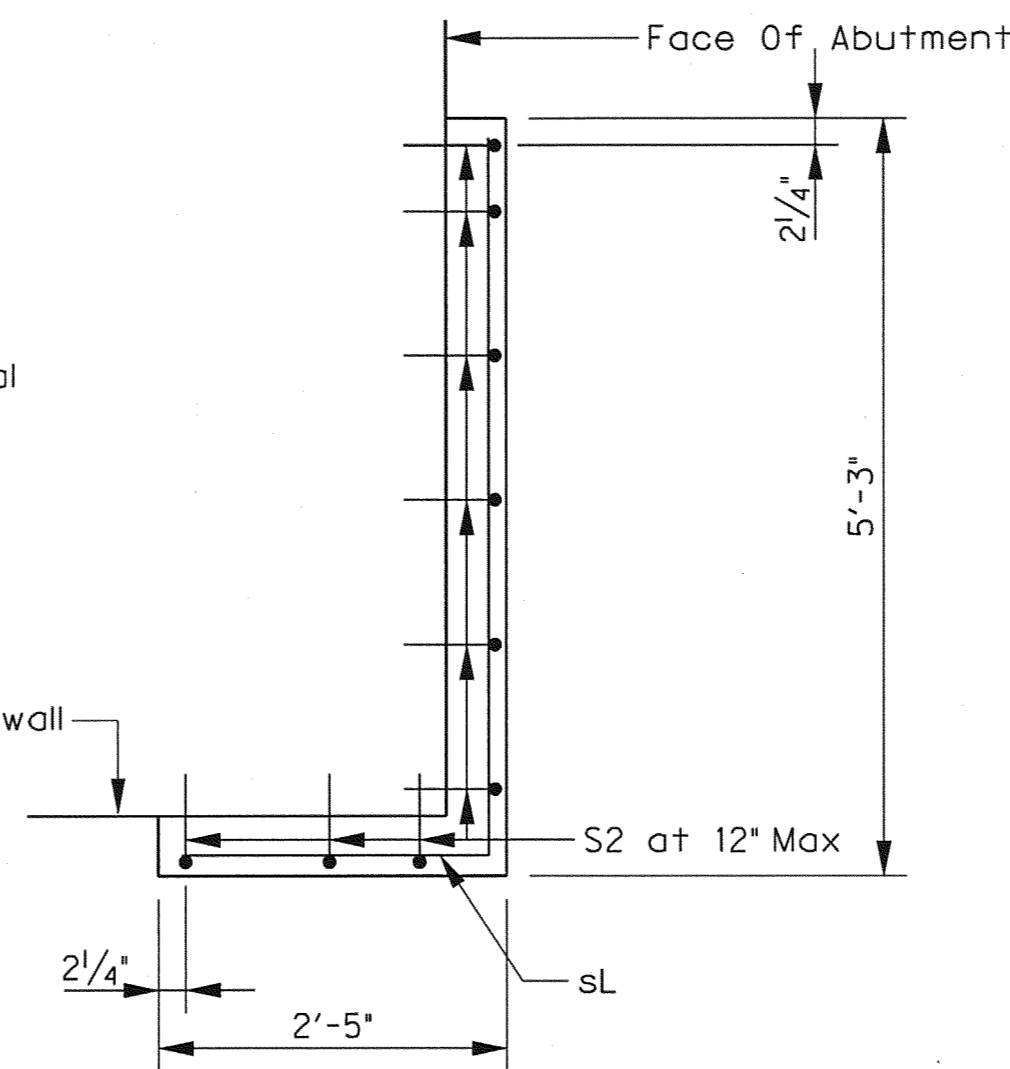
Note: See Wingwall Elevation and Section A-A for abutment details and reinforcing not shown.



SECTION C-C
SCALE: N.T.S.



ELEVATION
SCALE: N.T.S.



PLAN
SCALE: N.T.S.

DETAIL B
SCALE: N.T.S.



NO.	REVISION	BY	DATE
ADDISON TOWN OF ADDISON DALLAS COUNTY, TEXAS VITRUVIAN PARK BRIDGES BELLA LANE ABUTMENT DETAILS WINGWALL DETAILS			
HALFF 1201 NORTH BOWSER ROAD, RICHARDSON, TEXAS 75081-2275 TEL (214) 346-6200 FAX (214) 739-0095			
PROJECT	DESIGN	DRAWN	DATE
27379	ESC	AHH	APRIL 2010
FILE	SHEET		
-	S2-07		