

USER: cjh1940

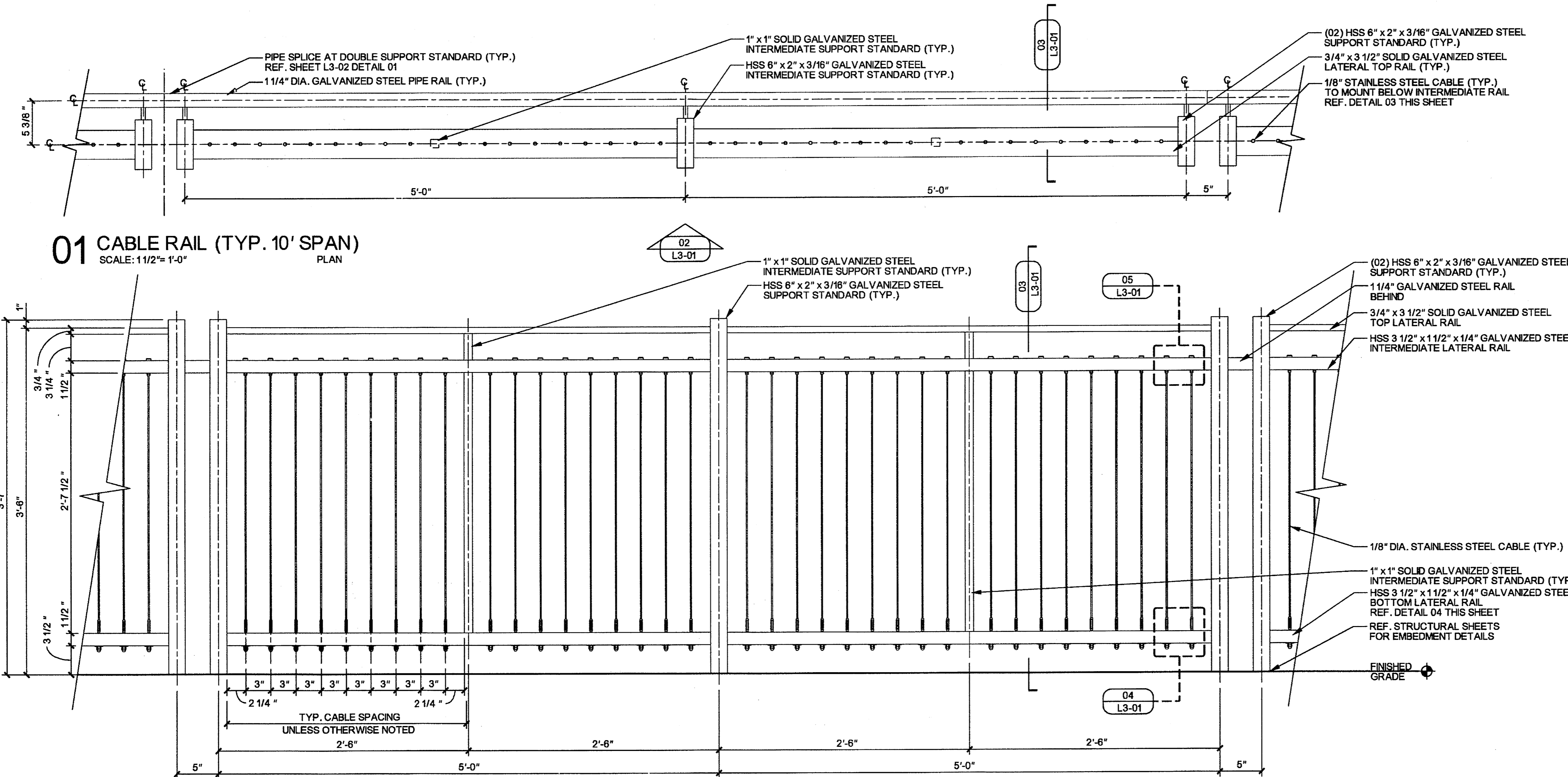
OFFICE: RCH

PROJECT # 27379

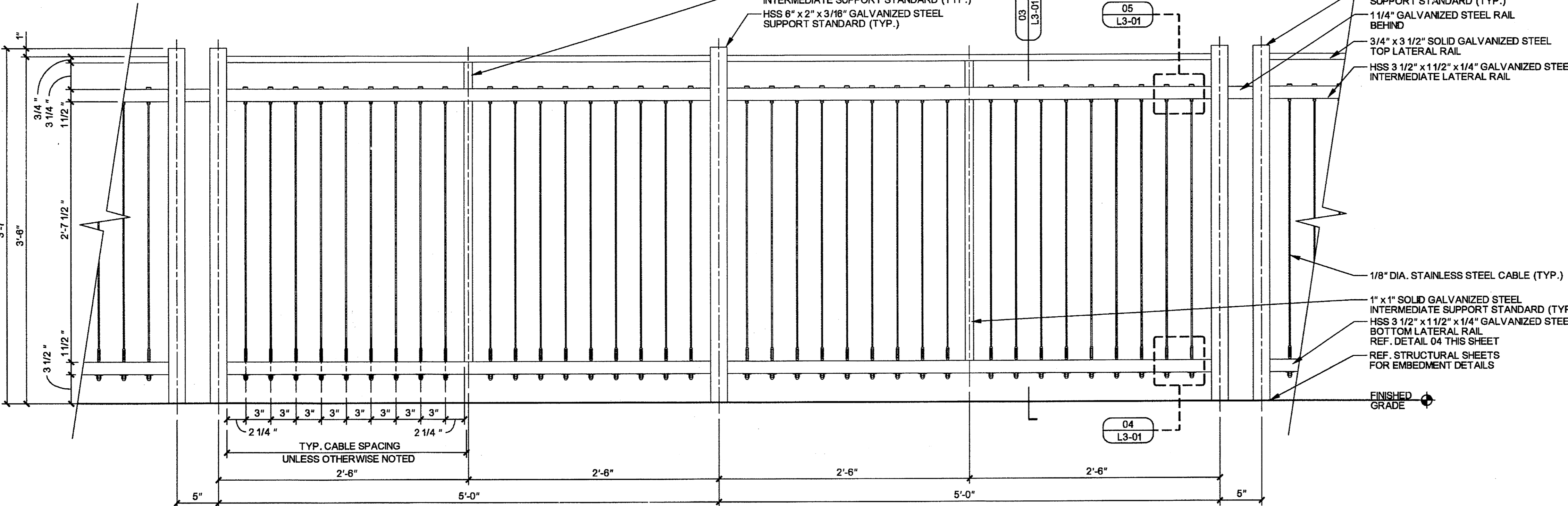
FILE: L301-DT-27379.dgn

TIME: 10:36:26 AM

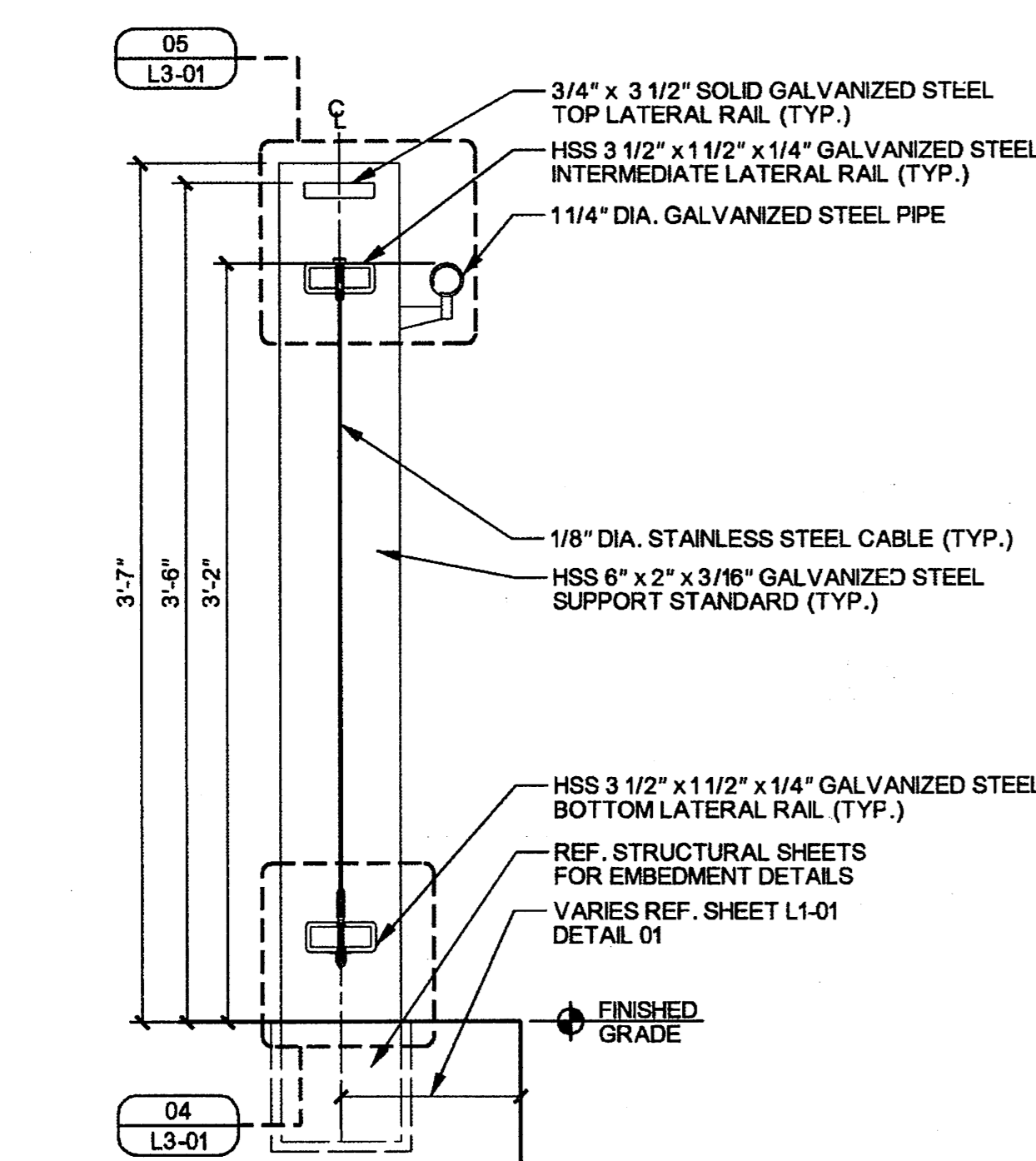
DATE: 4/29/2010



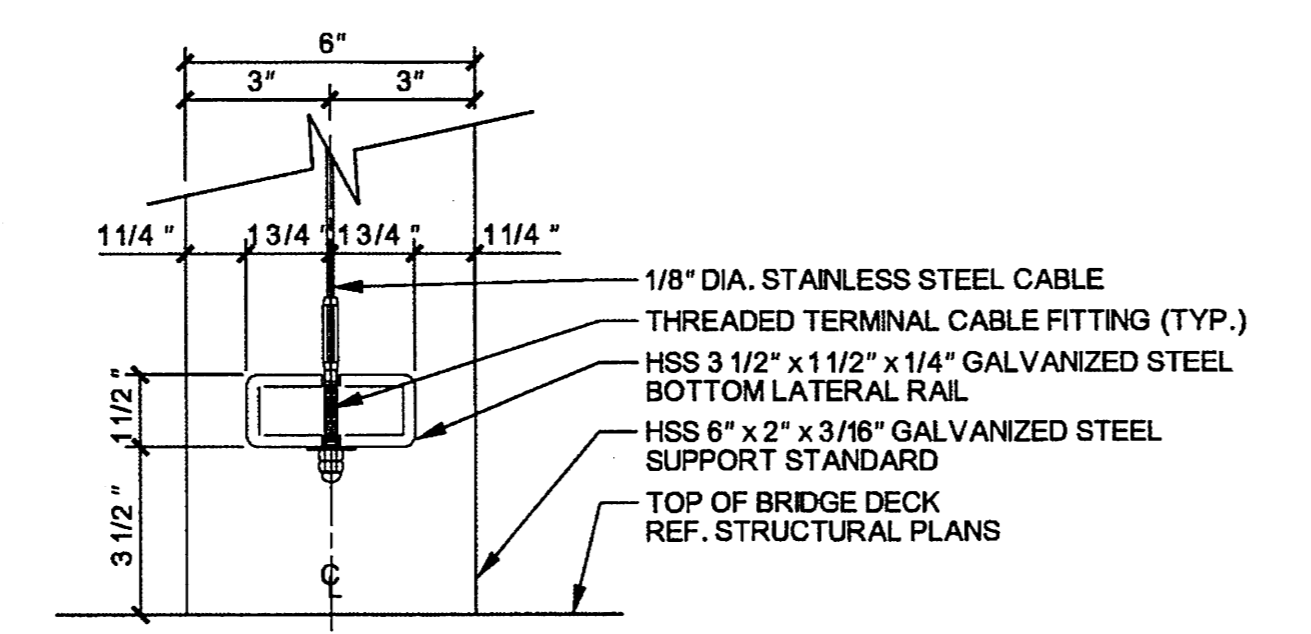
01 CABLE RAIL (TYP. 10' SPAN)
SCALE: 1 1/2" = 1'-0"
PLAN



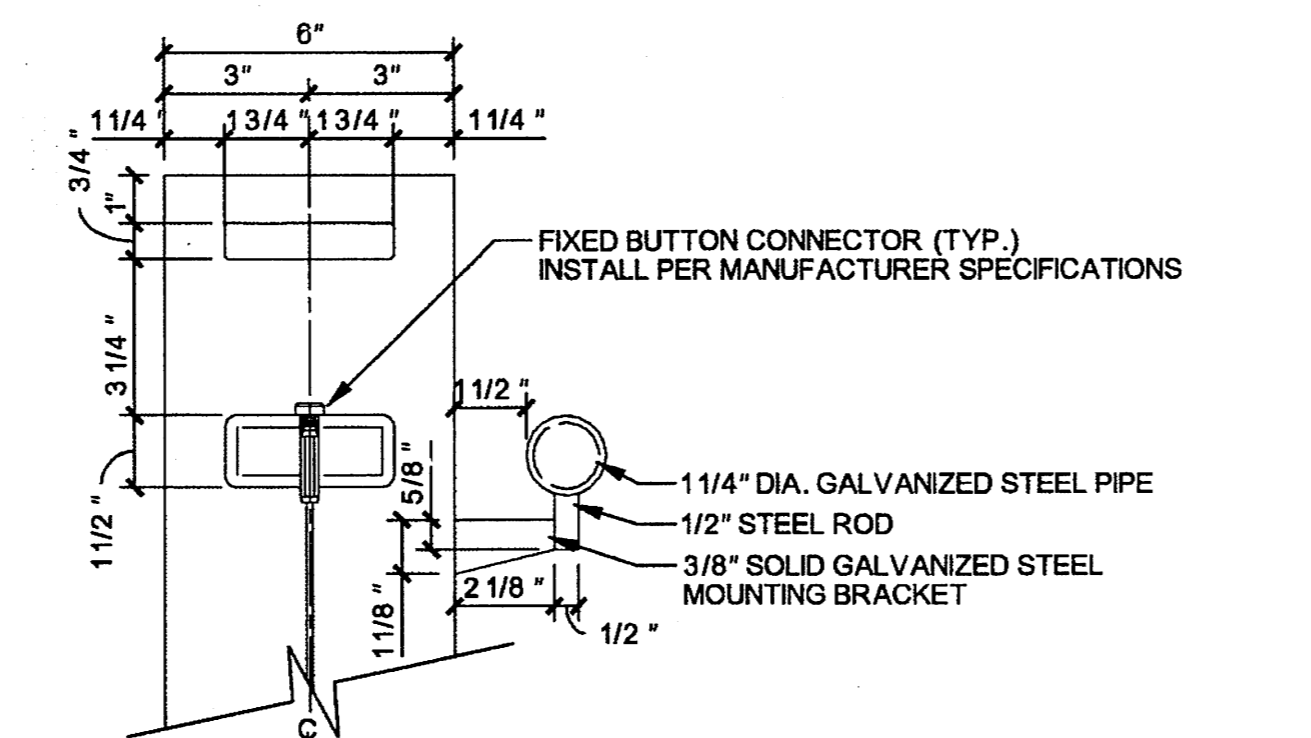
02 CABLE RAIL (TYP. 10' SPAN)
SCALE: 1 1/2" = 1'-0"
ELEVATION



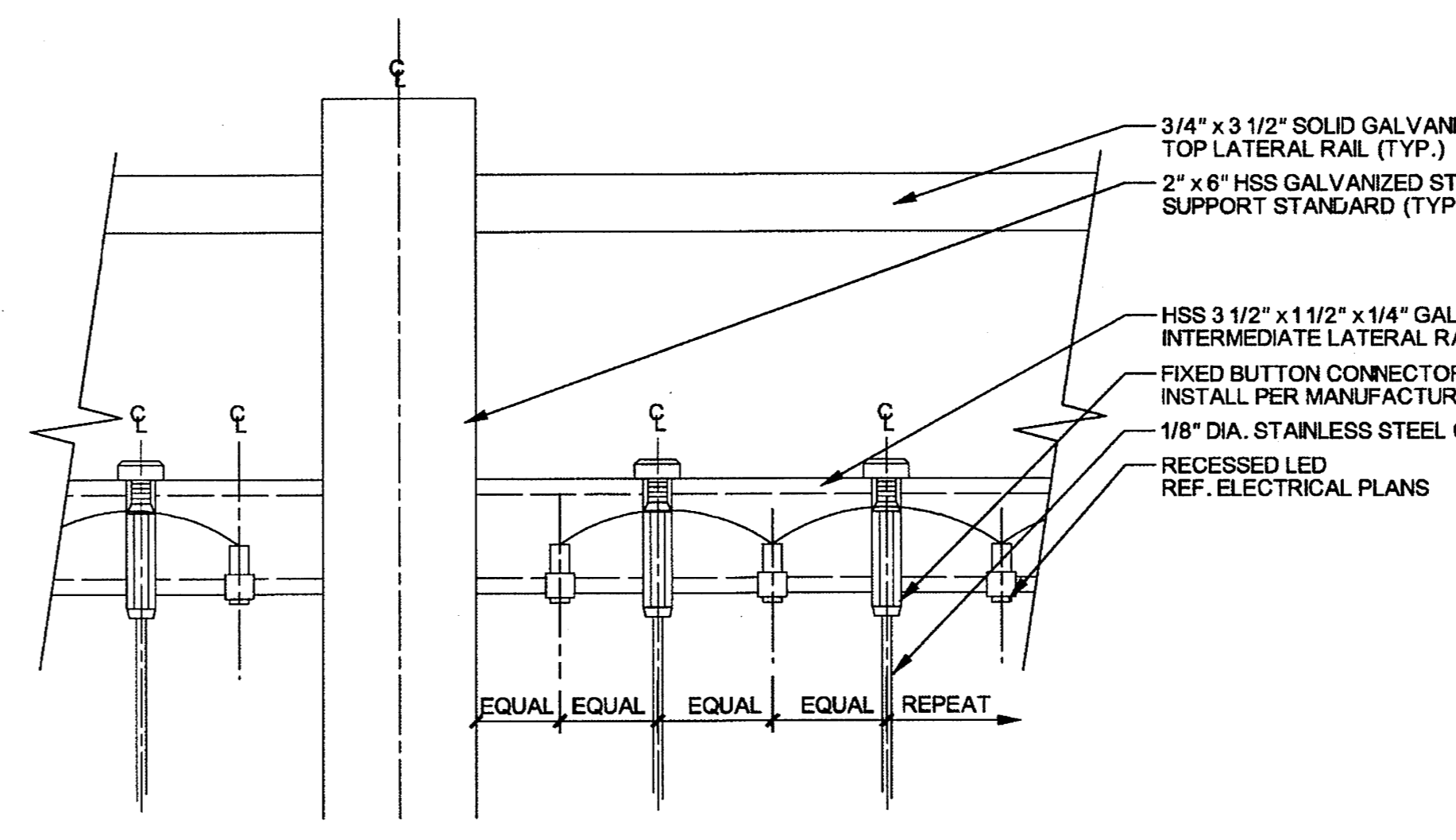
03 CABLE RAIL (TYP.)
SCALE: 1 1/2" = 1'-0"
SECTION



04 CABLE CONNECTION-BOTTOM RAIL (TYP.)
SCALE: 3" = 1'-0"
SECTION



05 CABLE CONNECTION-TOP RAIL (TYP.)
SCALE: 3" = 1'-0"
SECTION



06 UPPER CABLE CONNECTION-PONTE (TYP.)
SCALE: 6" = 1'-0"
SECTION

DESIGN SELECTION: RAILING

- CONNECTORS / FITTINGS:**
- FIXED BUTTON HEAD CONNECTOR
MODEL #: 3287
CONTACT:
FEENEY ARCHITECTURAL PRODUCTS
OR APPROVED EQUAL
 - THREADED TERMINAL CABLE FITTING
MODEL #: 3191
CONTACT:
FEENEY ARCHITECTURAL PRODUCTS
OR APPROVED EQUAL
- CABLES:**
- 1/8" DIA. STAINLESS STEEL CABLE
MODEL #: 4140
CONTACT:
FEENEY ARCHITECTURAL PRODUCTS
OR APPROVED EQUAL
- FEENEY ARCHITECTURAL PRODUCTS**
TRANG NGUYEN
1-800-888-2418
WWW.FEENEYARCHITECTURAL.COM
OR APPROVED EQUAL
- RAILING GENERAL NOTES:**
- ALL STEEL COMPONENTS TO BE GALVANIZED UNLESS OTHERWISE NOTED.
 - ALL LATERAL AND INTERMEDIATE STEEL RAILS TO BE PARALLEL TO SIDEWALK SLOPES UNLESS OTHERWISE NOTED.
 - HSS 6" x 2" x 3/16" GALVANIZED STEEL SUPPORT STANDARDS TO BE PLUMB.
 - EXPOSED EDGES OF ALL STEEL MEMBERS SHALL BE ROUNDED TO MIN. 1/16" BY GRINDING UNLESS OTHERWISE NOTED.
 - ALL STANDARD TXDOT TYPE T401 VEHICULAR RAILING POSTS TO BE CENTERED WITH THE PEDESTRIAN RAIL STEEL SUPPORT STANDARDS AS SHOWN ON SHEET L3-02 DETAIL 07.
 - CONTRACTOR TO SUBMIT PEDESTRIAN RAIL SHOP DRAWINGS FOR APPROVAL.
 - MAXIMUM 4" SPACING BETWEEN ALL RAIL AND CABLE MEMBERS.
 - 3/16" WELD REQUIRED FOR ALL STEEL MEMBER CONNECTIONS UNLESS OTHERWISE NOTED.
 - REF. STRUCTURAL PLANS FOR ALL POST EMBEDMENT DETAILS.
 - CONTRACTOR TO PROVIDE A 20" CABLE RAIL MOCK-UP ON SITE FOR APPROVAL PRIOR TO WORK COMMENCEMENT.



THE SEAL APPEARING ON THIS DOCUMENT WAS AUTHORIZED BY LENNY L. HUGHES, P.E., R.L.A. #2087 ON 04-29-2010. ALTERATION OF A SEALED DOCUMENT WITHOUT PROPER NOTIFICATION TO THE RESPONSIBLE LANDSCAPE ARCHITECT IS AN OFFENSE UNDER THE TEXAS ENGINEERING PRACTICE ACT. THE RECORD COPY OF THIS DRAWING IS ON FILE AT THE OFFICE OF HALFF ASSOCIATES, INC., 1201 NORTH BOWSER, RICHARDSON, TEXAS 75081. TPEE FIRM #F-312

NO.	REVISION	BY	DATE
Align TOWN OF ADDISON DALLAS COUNTY, TEXAS			
VITRUVIAN PARK BRIDGES			
GENERAL DETAILS			
HALFF 1201 NORTH BOWSER ROAD, RICHARDSON, TEXAS 75081-2275 TEL (214) 348-8200 FAX (214) 738-0096			
PROJECT	DESIGN	DRAWN	DATE
27379	JDB	AHH	APRIL 2010
FILE	SHEET		
-	L3-01		