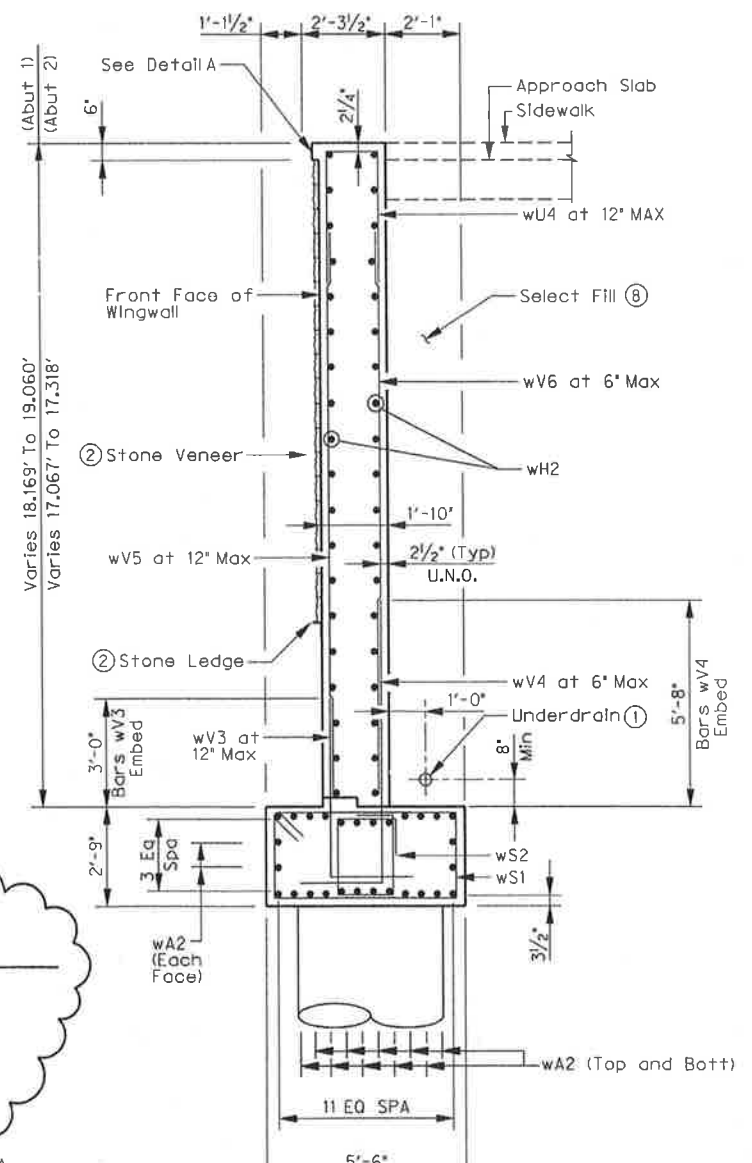
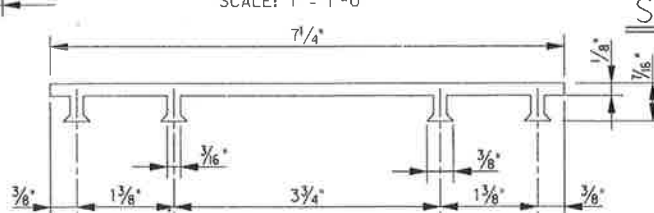
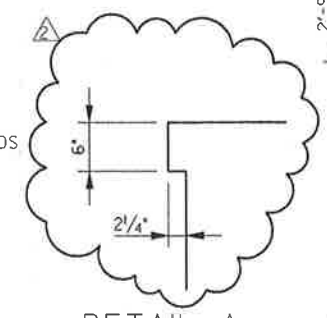


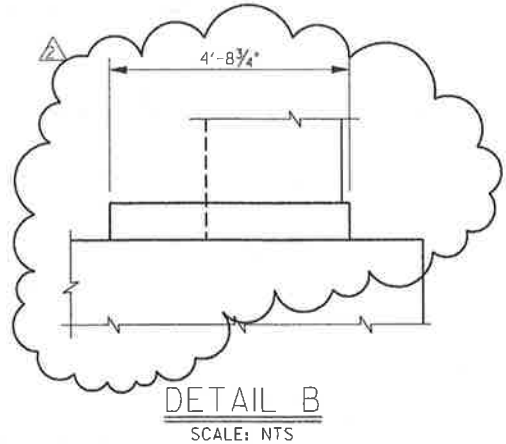
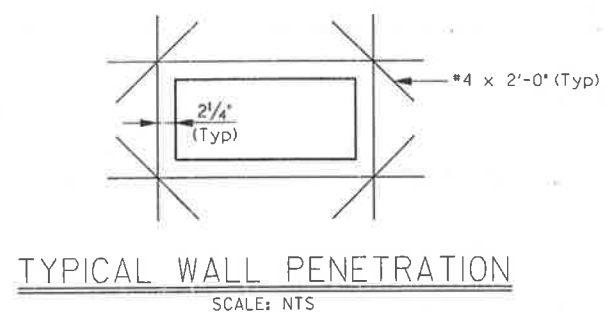
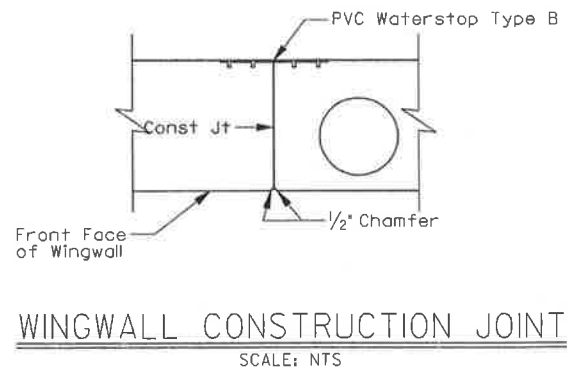
WINGWALL ELEVATION
SCALE: 3/8" = 1'-0"



SECTION A-A
SCALE: 3/8" = 1'-0"



- See Sheet 8 of 10 for underdrain detail.
- Stone ledge shall be a 5" x 3" x 1/4" angle (LLV) with 1/2" dia HiltiKwik Bolt 3 expansion anchors embedded a minimum of 3/2" and spaced at 1'-6" C.C. Refer to landscape architecture sheets for location of stone veneer and stone ledges.
- Field cut bars wH2 2' from steel embed where applicable.
- Flare top bars to match slope of wall.
- See Drawing No. S1-23 and S1-24 for steel embed details.
- See Sheet 6 of 10 for spacing of bars wG.
- See Drawing No. S1-18 for stone collar details.
- See Sheet 1 of 10 for select fill notes.
- Location varies.
- Bars sH2 and sL3 not shown for clarity.



THE SEAL APPEARING ON THIS DOCUMENT WAS AUTHORIZED BY ERIC S. CHRISTENSEN, P.E. #85412 ON 05-19-2010. ALTERATION OF A SEALED DOCUMENT WITHOUT PROPER NOTIFICATION TO THE RESPONSIBLE ENGINEER IS AN OFFENSE UNDER THE TEXAS ENGINEERING PRACTICE ACT. THE SECOND COPY OF THIS DRAWING IS ON FILE AT THE OFFICES OF HALFF ASSOCIATES, 1001 NORTH BOWSER ROAD, RICHARDSON, TEXAS, 75081, TYPE FROM #7-312.

Addendum #2		ESC	05/19/10
NO.	REVISION	BY	DATE
 TOWN OF ADDISON DALLAS COUNTY, TEXAS VITRUVIAN PARK BRIDGES PONTE AVENUE ABUTMENT DETAILS - WINGWALL DETAILS			
HALFF			
1201 NORTH BOWSER ROAD, RICHARDSON, TEXAS 75081-2276 TEL (214) 346-6200 FAX (214) 730-0006			
PROJECT	DESIGN	DRAWN	DATE
27379	ESC	AHH	APRIL 2010
FILE	SHEET		
-	S1-09		