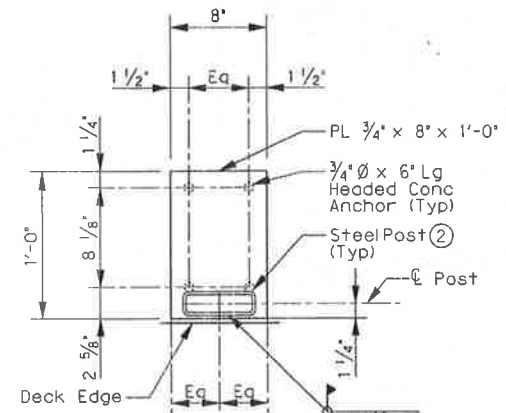
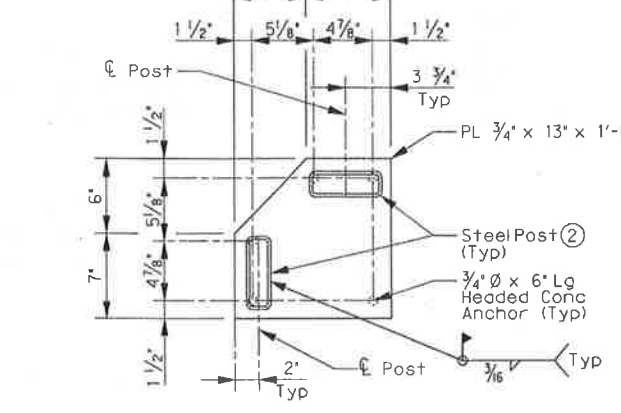


**TYPICAL RAIL POST EMBED PLATE DETAIL ①**  
SCALE: 1 1/2" = 1'-0"

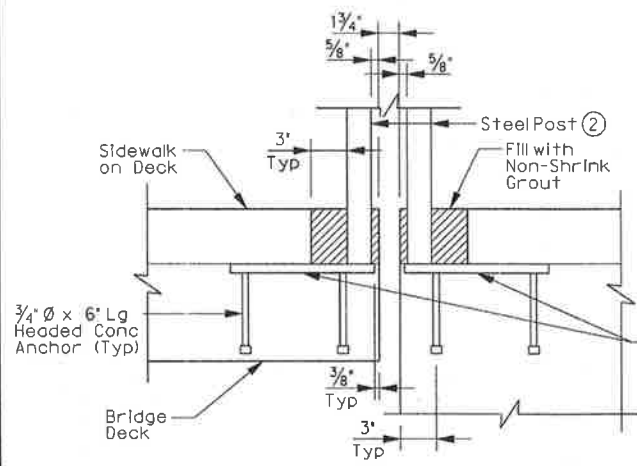


**RAIL POST EMBED PLATE AT BRIDGE SEJ DETAIL ①**  
SCALE: 1 1/2" = 1'-0"

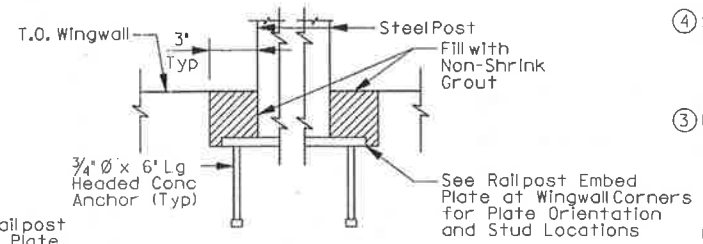


**RAIL POST EMBED PLATE AT WINGWALL CORNERS DETAIL ①**  
SCALE: 1 1/2" = 1'-0"

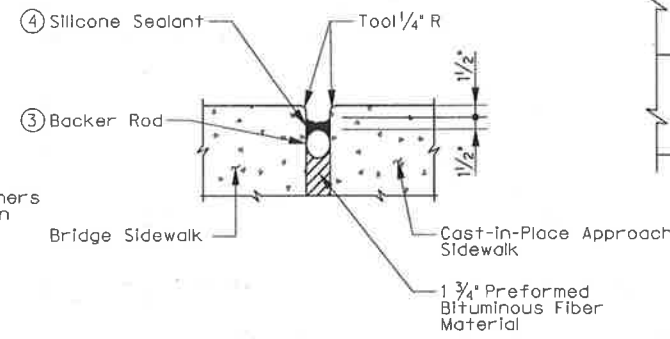
- ① Roll embeds are subsidiary to Ped Rail Item.
- ② Leave the bottom one inch of post ungalvanized.



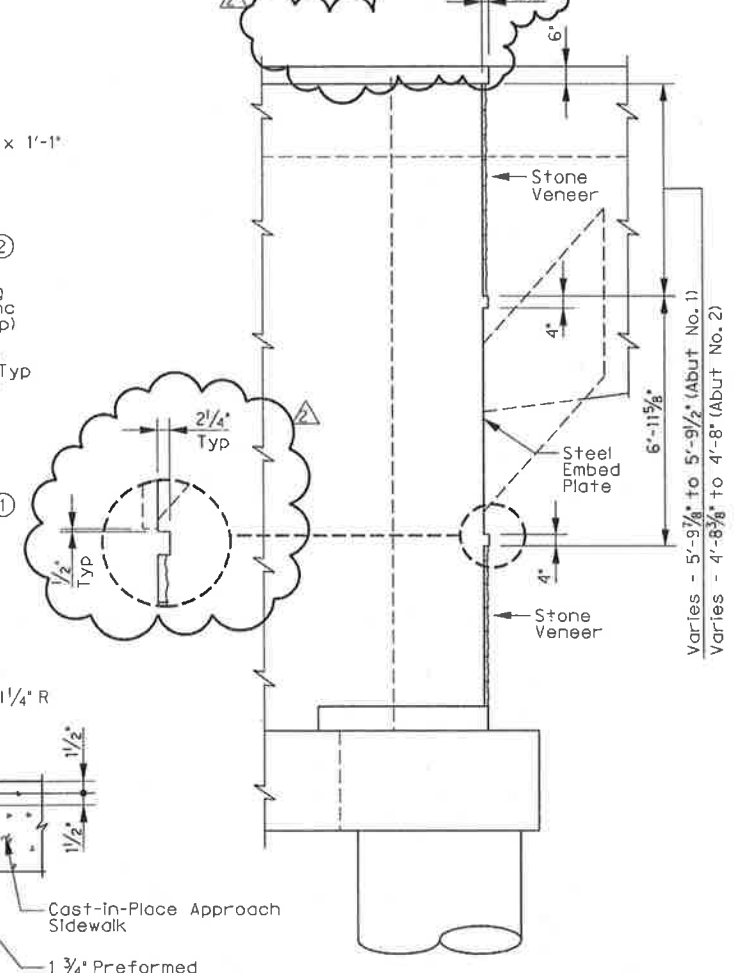
**RAIL POST EMBED PLATE AT BRIDGE SEJ SECTION ①**  
SCALE: 1 1/2" = 1'-0"



**RAIL POST EMBED PLATE AT WINGWALL CORNERS SECTION ①**  
SCALE: 1 1/2" = 1'-0"



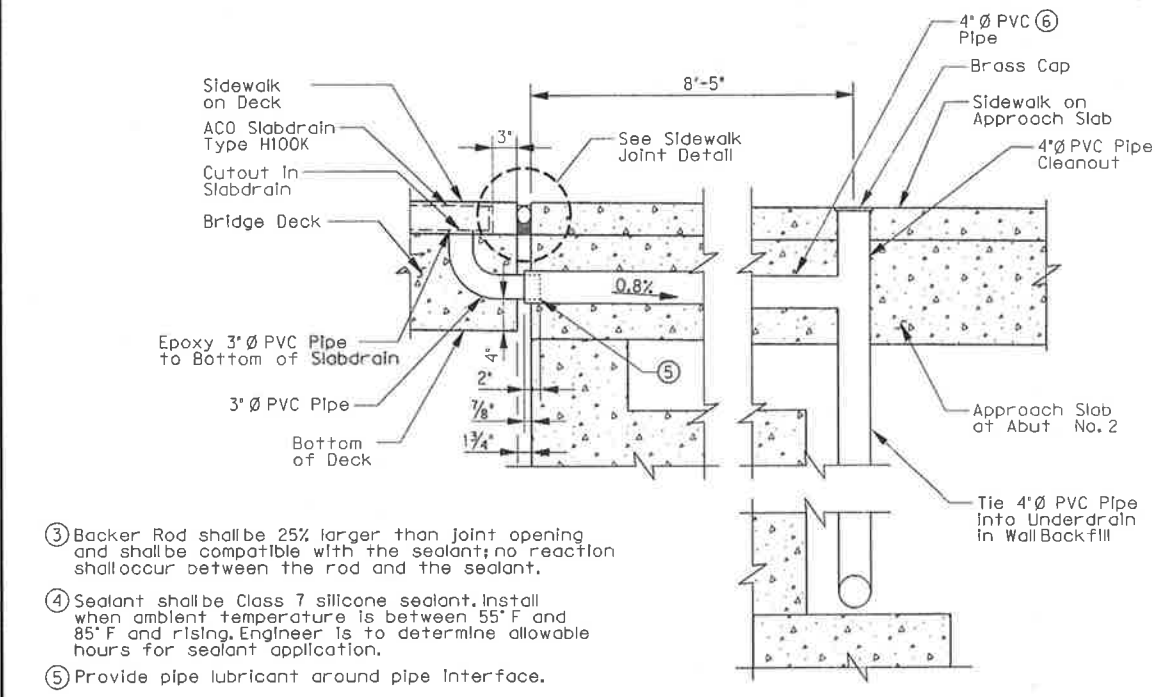
**SIDEWALK JOINT DETAIL**  
SCALE: NTS



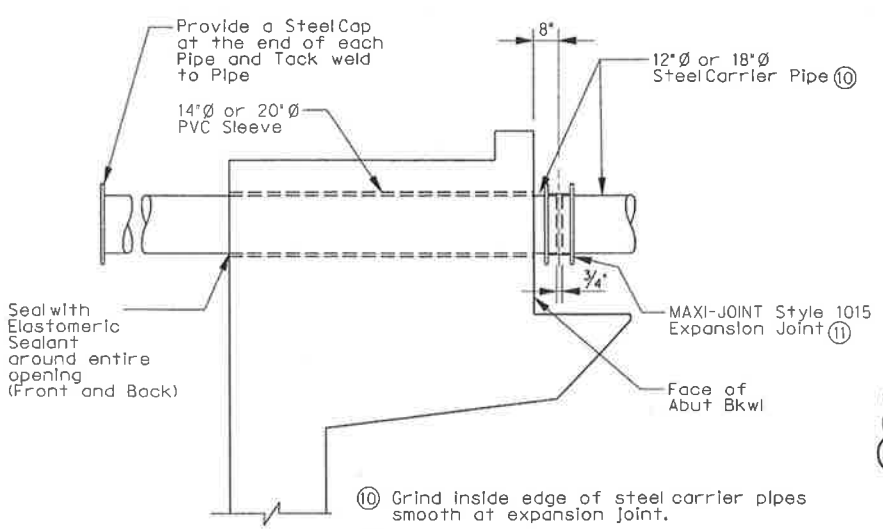
**SECTION** and **ELEVATION**

**STONE COLLAR DETAILS ⑥**  
SCALE: 3/8" = 1'-0"

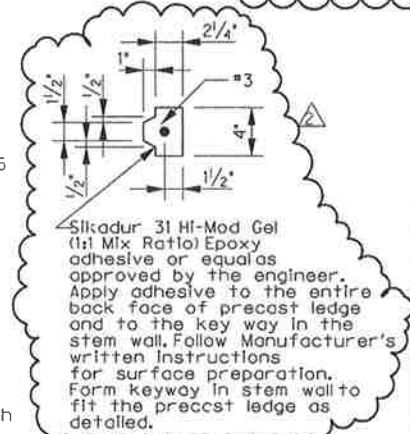
- ⑥ For Abutment details and bar details not shown, see Drawing Nos. S1-05 to S1-14.
- ⑦ Prior to Arch installation a temporary stone support (L5 x 3 x 1/4 (LLV)) shall be used. Installation with three 1/2 inch Hilti Quik Bolt 3 expansion anchors embedded 3 1/2 inches min. Coordinate removal of stone veneer and temporary stone support with steel arch erector. Replace the temporary stone ledge with precast ledge after arch has been installed. At the Contractor's option, the stone veneer may be installed after the Arch is fully erected. If this option is used, the temporary stone support (L5 x 3 x 1/4) is not needed. For either option, the precast ledge shall be installed only after the Arch is fully erected.



**DRAIN DETAIL**  
SCALE: NTS



**STEEL PIPE EMBED AND EXPANSION JOINT DETAIL**  
SCALE: NTS



**PRECAST LEDGE DETAIL**  
SCALE: NTS

- ③ Backer Rod shall be 25% larger than joint opening and shall be compatible with the sealant; no reaction shall occur between the rod and the sealant.
- ④ Sealant shall be Class 7 silicone sealant. Install when ambient temperature is between 55° F and 85° F and rising. Engineer is to determine allowable hours for sealant application.
- ⑤ Provide pipe lubricant around pipe interface.
- ⑥ Provide bends in PVC pipe where necessary to avoid thickened wingwall. See Sheet S1-14 for quantity of drain pipe.
- ⑦ Drain located in both sidewalks at Abut No. 2.

05-19-10

THE SEAL APPEARING ON THIS DOCUMENT WAS AUTHORIZED BY ERIC S. CHRISTENSEN, P.E. #85412 ON 05-19-2010. ALTERATION OF A SEALED DOCUMENT WITHOUT PROPER NOTIFICATION TO THE RESPONSIBLE ENGINEER IS AN OFFENSE UNDER THE TEXAS ENGINEERING PRACTICE ACT. THE RECORD COPY OF THIS DRAWING IS ON FILE AT THE OFFICES OF HALFF ASSOCIATES, 1201 NORTH BOWSER ROAD, RICHARDSON, TEXAS, 75081, TSPC FORM 97-312.

Addendum #2		ESC	05/19/10
NO.	REVISION	BY	DATE
<b>TOWN OF ADDISON</b> DALLAS COUNTY, TEXAS			
<b>VITRUVIAN PARK BRIDGES</b> PONTE AVENUE			
<b>MISCELLANEOUS DETAILS</b>			
<b>HALFF</b> 1201 NORTH BOWSER ROAD, RICHARDSON, TEXAS 75081-2275 TEL (214) 348-0200 FAX (214) 730-0066			
PROJECT	DESIGN	DRAWN	DATE
27379	ESC	AHH	APRIL 2010
			FILE
			SHEET
			S1-18