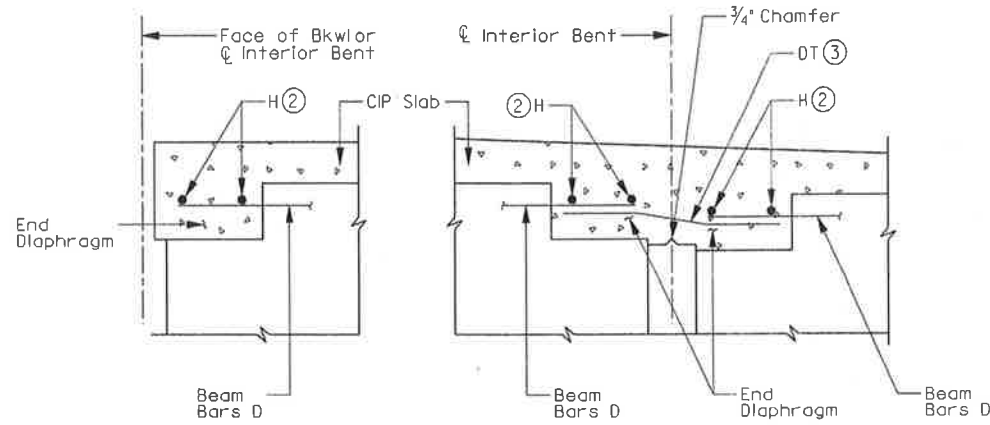


SPAN NO.	REINF CONCRETE SLAB	PRSTR CONCRETE BEAM (4B28)	PRSTR CONCRETE BEAM (5B28)	CLASS S CONCRETE (SLAB)	CLASS (9) S CONCRETE (SOWLK)	REINF STEEL
	SF	LF	LF	CY	CY	LB
1	1,786	91.96	235.45	47.3	18.0	11,609
2	4,111	211.14	563.04	105.6	17.5	26,720
3	2,281	115.40	317.51	59.7	20.1	14,828
TOTAL	8,178	418.50	1,116.00	212.7	55.5	53,157

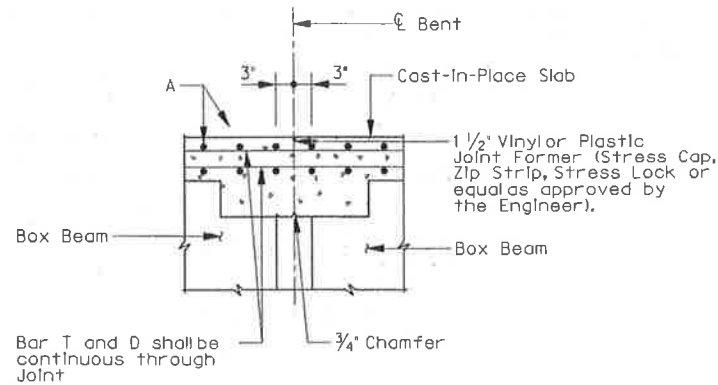


ABUTMENT OR INTERIOR BENT

INTERIOR BENT (Without Expansion Joint)

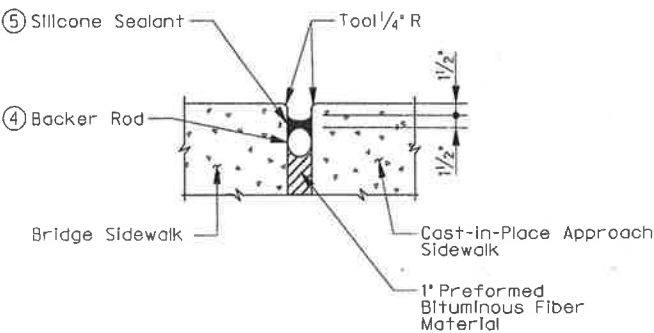
TYPICAL END DIAPHRAGM SECTIONS

SCALE: NTS (Along centerline of Box Beam) (Slab reinforcing not shown for clarity)



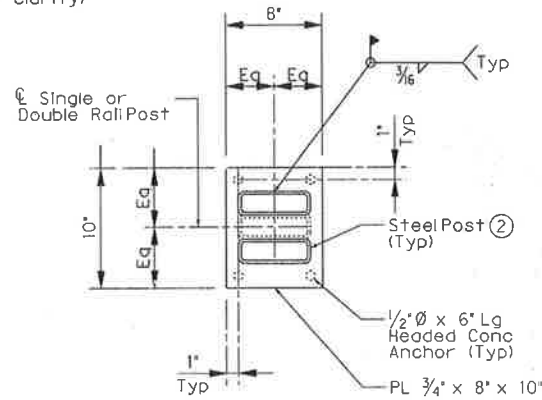
CONTINUOUS SLAB DETAIL

SCALE: NTS (Diaphragm reinforcing not shown for clarity)



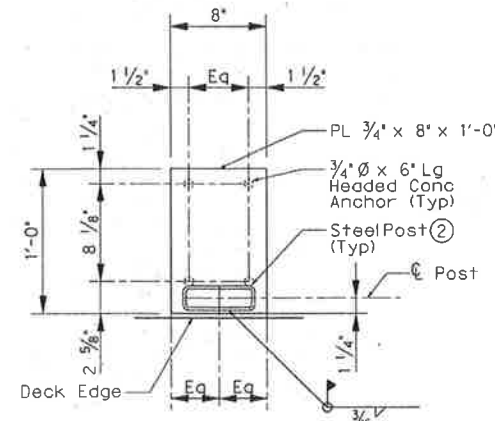
CONTINUOUS SLAB DETAIL

SCALE: NTS



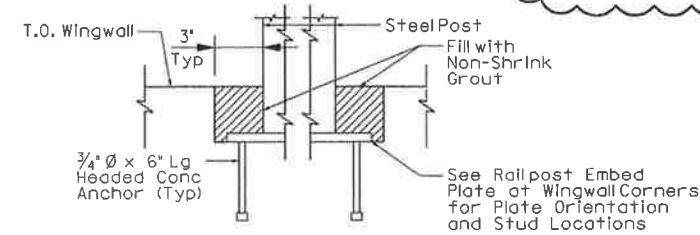
TYPICAL RAIL POST EMBED PLATE DETAIL

SCALE: 1/4" = 1'-0"



RAIL POST EMBED PLATE AT BRIDGE SEJ DETAIL

SCALE: 1/4" = 1'-0"



RAIL POST EMBED PLATE AT WINGWALL CORNERS SECTION

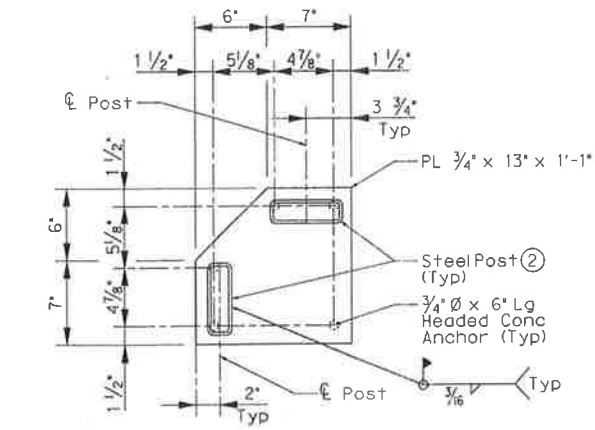
SCALE: 1/4" = 1'-0"



05-14-10

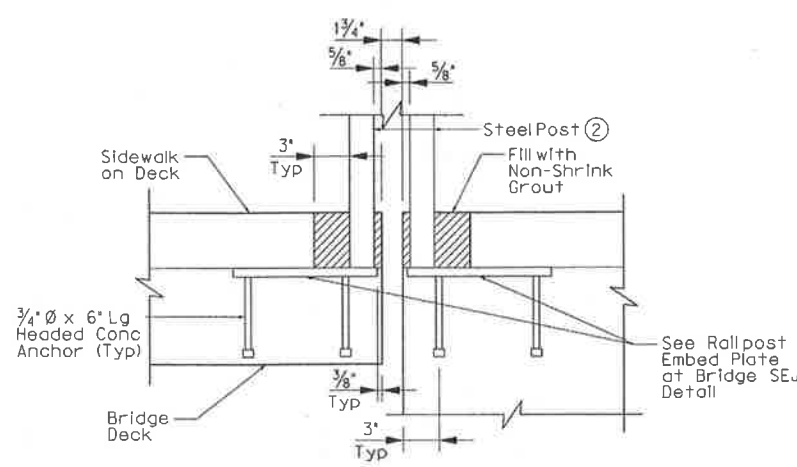
THE SEAL APPEARING ON THIS DOCUMENT WAS AUTHORIZED BY ERIC S. CHRISTIANSEN, P.E. #85412 ON 05-14-2010. ALTERATION OF A SEALED DOCUMENT WITHOUT PROPER NOTIFICATION TO THE RESPONSIBLE ENGINEER IS AN OFFENSE UNDER THE TEXAS ENGINEERING PRACTICE ACT. THE RECORD COPY OF THIS DRAWING IS ON FILE AT THE OFFICES OF HALFF ASSOCIATES, 1201 NORTH BOWSER ROAD, RICHARDSON, TEXAS, 75081. TUBE FROM #7-312.

Bar	Size
A	#5
B	#5
D	#5
DT	#5
H	#5
SA	#3
ST	#3
T	#4



RAIL POST EMBED PLATE AT WINGWALL CORNERS DETAIL

SCALE: 1/4" = 1'-0"



RAIL POST EMBED PLATE AT BRIDGE SEJ SECTION

SCALE: 1/4" = 1'-0"

TABLE OF SECTION DEPTHS - UNIT 1

SPAN NO.	BEAM NO.	*X' AT C.L. BRG	*Y' AT C.L. BRG	(B) *Z' AT C.L. SPAN
1	1, 10 & 11	9 1/2"	3'-1 1/2"	9 1/2"
	2-9	9 1/2"	3'-1 1/2"	9 1/4"
2	1, 10 & 11	11"	3'-3"	9 3/4"
	2-9	11"	3'-3"	9 1/2"
3	ALL	9 1/2"	3'-1 1/2"	9 1/4"

- ① See Bridge Layout for Joint type.
- ② Provide 1 1/2" end cover to Bars H. After all beams have been placed, weld one Bar H to two Bars D at each end of all beams.
- ③ Lap Bars DT 9" Min with each Beam Bar D at Interior Bents without Expansion Joints. Bars DT shown bent for clarity only.
- ④ Backer Rod shall be 25% larger than joint opening and shall be compatible with the sealant; no reaction shall occur between the rod and the sealant.
- ⑤ Sealant shall be Class 7 silicone sealant. Install when ambient temperature is between 55°F and 85°F and rising. Engineer is to determine allowable hours for sealant application.
- ⑦ Reinforcing steel weight is calculated using an approximate factor of 6.5 lbs/SF.
- ⑧ Theoretical Dimension.
- ⑨ Quantity is for contractor's information only. Quantity includes sidewalk on approach slab.

ADDENDUM #1	REVISION	BY	DATE
		ESC	5/14/10

TOWN OF ADDISON, DALLAS COUNTY, TEXAS

VITRUVIAN PARK BRIDGES, BELLA LANE

DECK DETAILS

HALFF 1201 NORTH BOWSER ROAD, RICHARDSON, TEXAS 75081-2276
 TEL (214) 346-6200 FAX (214) 739-0096

PROJECT	DESIGN	DRAWN	DATE	FILE	SHEET
27379	ESC	AHH	APRIL 2010		S2-13