

BAR SCHEDULE ~ ONE CAP

Bar	Type	No.	Size	Length	Weight
A	St	10	#10	15'-0"	646
H	St	8	#5	15'-2"	127
S	Bt	15	#5	9'-4"	147
V	Bt	16	#5	8'-11 1/2"	150
U	Bt	4	#6	7'-6"	46
wH1	Bt	16	#6	3'-9"	91
wH2	St	12	#6	3'-6"	64
wU	Bt	6	#4	2'-4"	10
wV	St	6	#6	10'-6 1/2"	96
Total Reinforcing Steel					LB 1,377
CIC Conc (Abut)					CY 6.2

ESTIMATED QUANTITIES

Item	Unit	QUANTITY
Drilled Shaft (24 IN)	FT	74
CIC Conc (Abut)	CY	6.2
Reinf Steel	LB	1,377

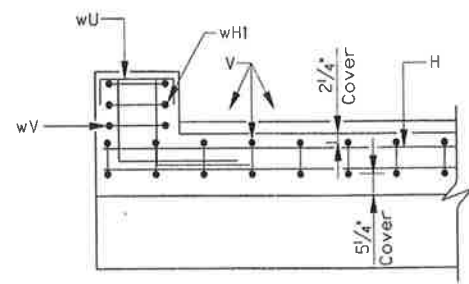
① For Contractor's Information only.

DESIGN NOTES:

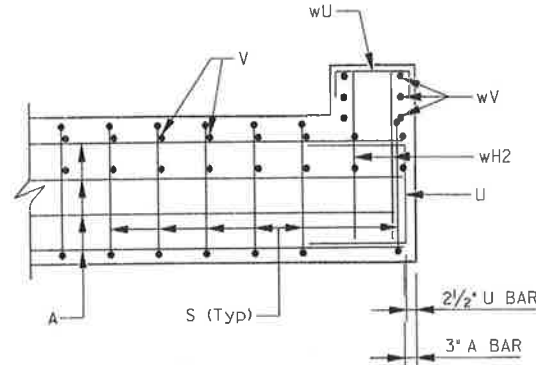
- All concrete excluding the landing shall be Class 'C' with a minimum compressive strength of 3600 PSI and coarse aggregate grade No. 2 - 5.
- All reinforcing steel shall be grade 60.
- Quantities shown are for 1 abutment.
- Splir steel shall have one extra turn at the top, bottom of drilled shafts, and at splices.
- All construction materials and workmanship for abutments shall be in accordance with Texas Department of Transportation 2004 Standard Specifications for Construction of Highways, Streets and Bridges.
- All construction materials & workmanship for the Pedestrian Bridge shall be in accordance with the 'Special Specification for Prefabricated Bridge.'
- Seal exposed surfaces of abutment with Opaque Sealer Finish.

LIGHT POLE SUPPORT NOTES:

- Support to be designed by bridge Manufacturer.
- Supported fixture is a BEGA 9801 MH on a 1108GP Pole Shortened to 9'-0". Total Structure height = 12'-7". Pole EPA = 3 sq ft BEGA 9801 MH EPA = 2.4 sq ft



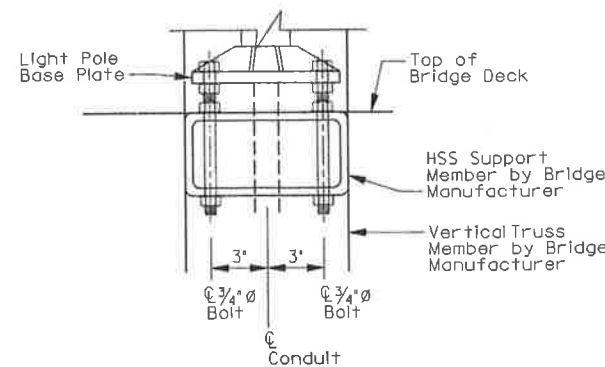
BACKWALL



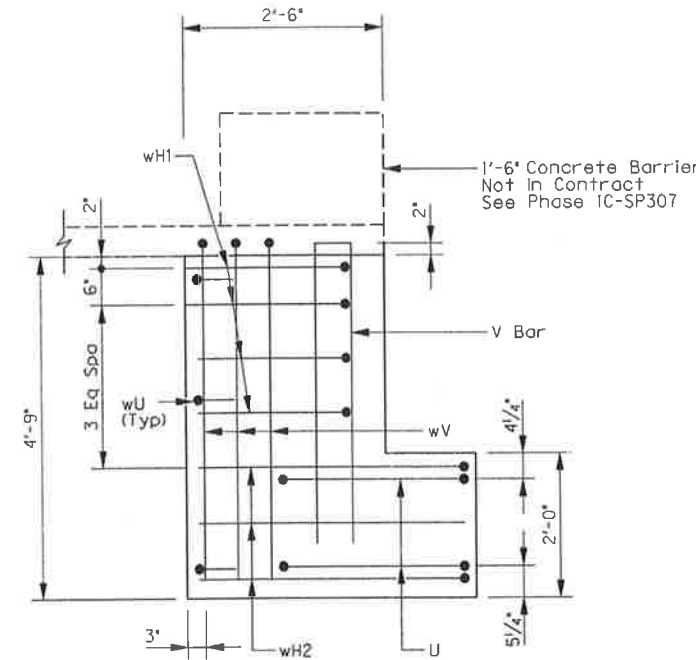
CAP

CORNER DETAILS

SCALE: 1/2" = 1'-0"

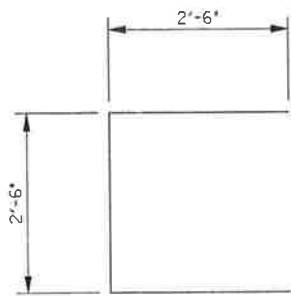


SECTION A-A

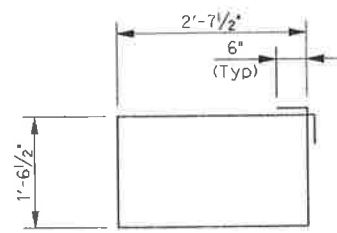


WINGWALL ELEVATION

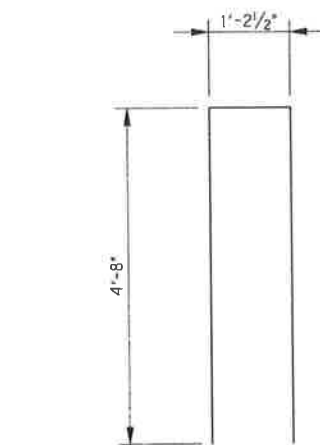
SCALE: 3/4" = 1'-0"



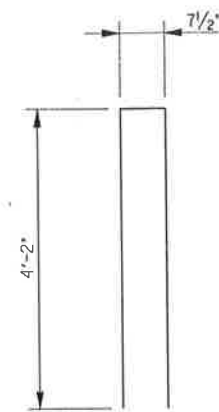
BARS U



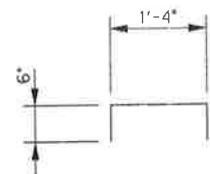
BARS S



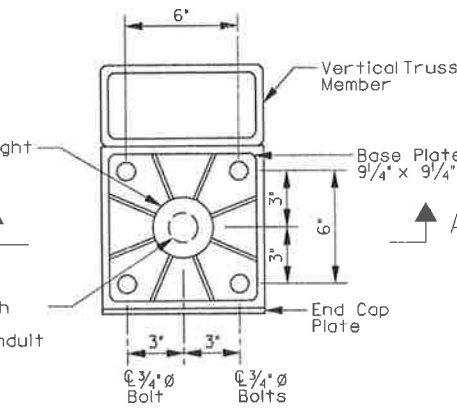
BARS WV



BARS V

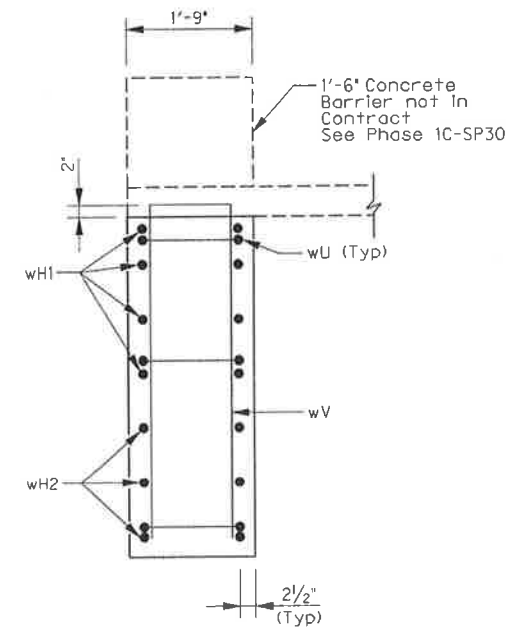


BARS WH1



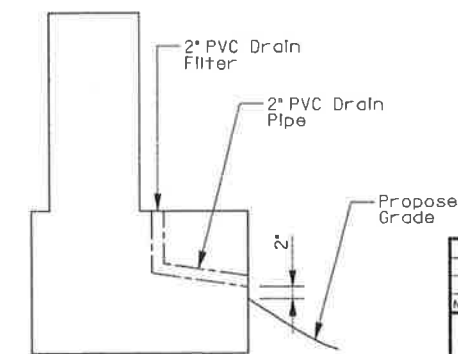
POLE SUPPORT DETAIL

NOT TO SCALE



WINGWALL SECTION

SCALE: 3/4" = 1'-0"



DRAIN DETAIL

NOTE: Slope top of abutment cap from edges toward 2\"/>



THE SEAL APPEARING ON THIS DOCUMENT WAS AUTHORIZED BY ERIC S. CHRISTENSEN, P.E. #85412 ON 04-29-2010. ALTERATION OF A SEALED DOCUMENT WITHOUT PRIOR NOTIFICATION TO THE RESPONSIBLE ENGINEER IS AN OFFENSE UNDER THE TEXAS ENGINEERING PRACTICE ACT. THE RECORD COPY OF THIS DRAWING IS ON FILE AT THE OFFICES OF HALFF ASSOCIATES, 1201 NORTH BOWSER ROAD, RICHARDSON, TEXAS, 75081. TYPE FIRM #F-312.

NO.	REVISION	BY	DATE
TOWN OF ADDISON DALLAS COUNTY, TEXAS VITRUVIAN PARK BRIDGES SOUTHERN PEDESTRIAN BRIDGE ABUTMENT DETAILS			
1201 NORTH BOWSER ROAD, RICHARDSON, TEXAS 75081-2276 TEL (214) 348-8200 FAX (214) 730-0085			
PROJECT	DESIGN	DRAWN	DATE
27379	ESC	AHH	APRIL 2010
FILE	SHEET		
-	S3-04		