

USER: dh1940

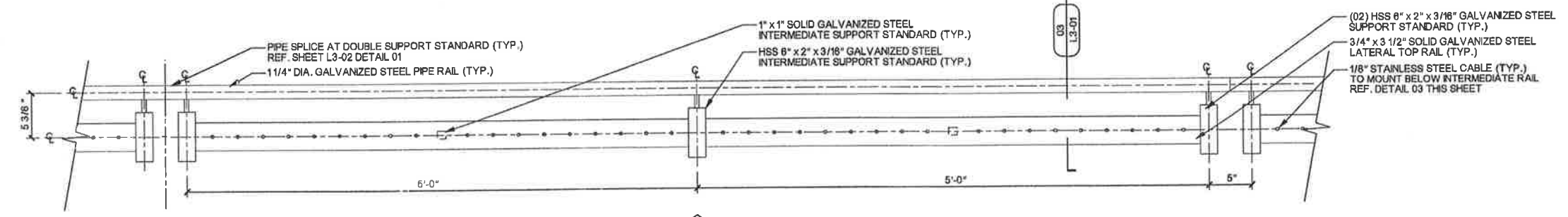
OFFICE: RCH

PROJECT #: 27379

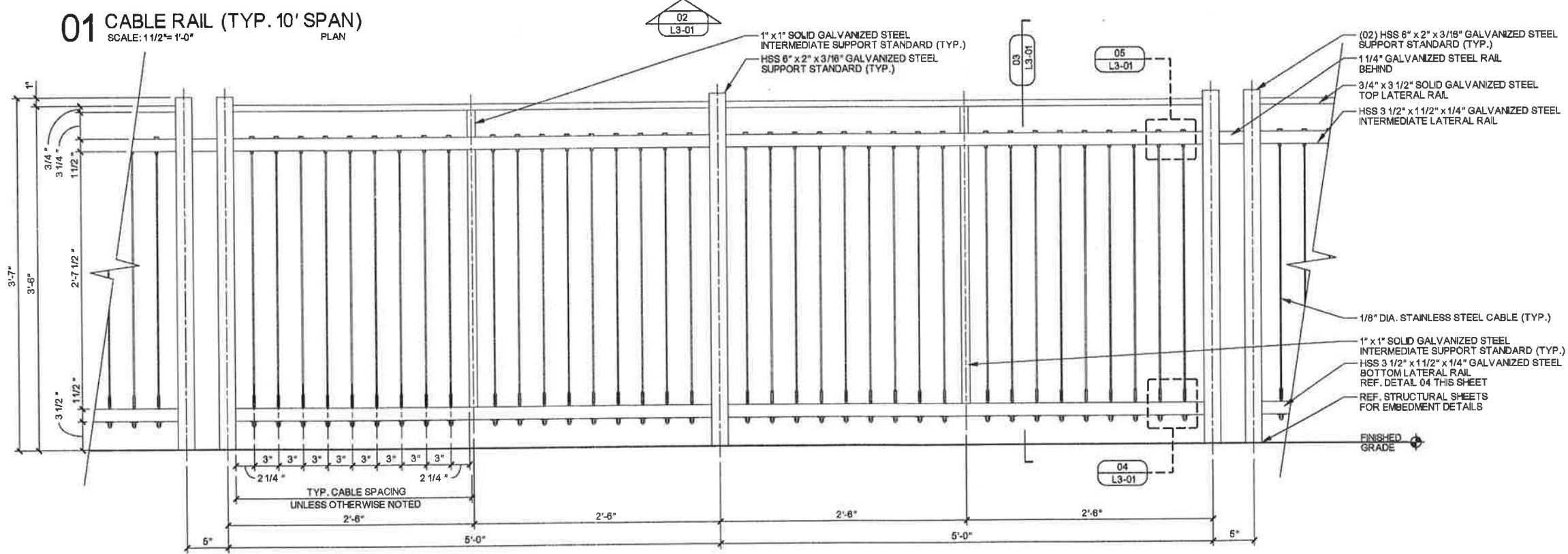
FILE: L301-DT-27379.dgn

TIME: 10:36:26 AM

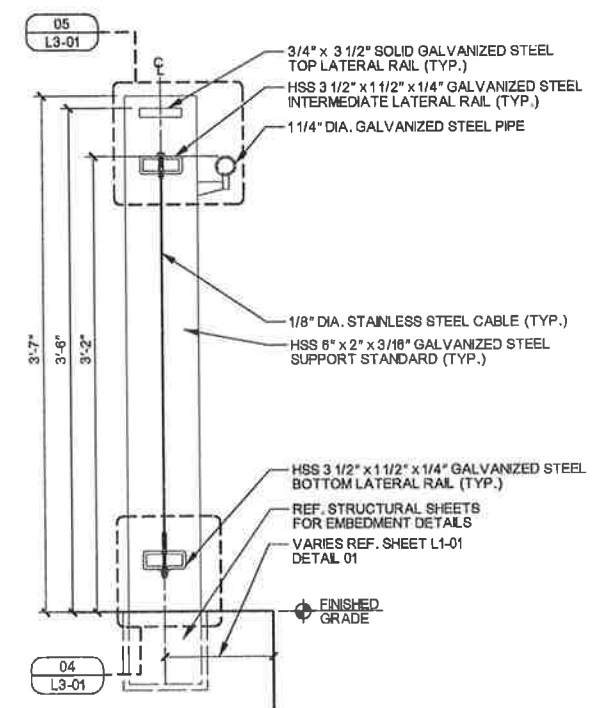
DATE: 4/29/2010



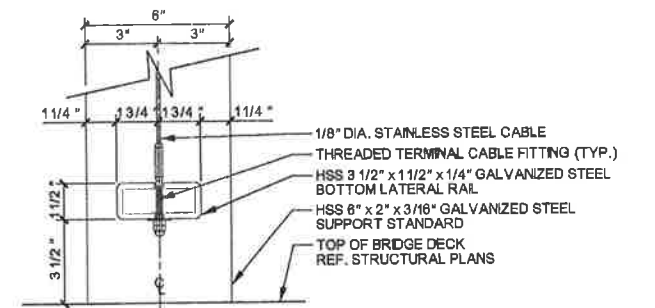
**01 CABLE RAIL (TYP. 10' SPAN)**  
SCALE: 1 1/2"=1'-0" PLAN



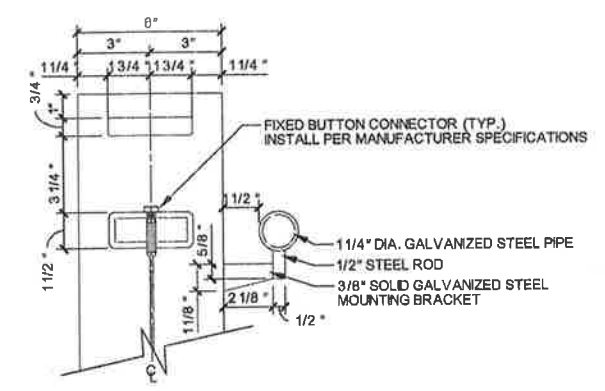
**02 CABLE RAIL (TYP. 10' SPAN)**  
SCALE: 1 1/2"=1'-0" ELEVATION



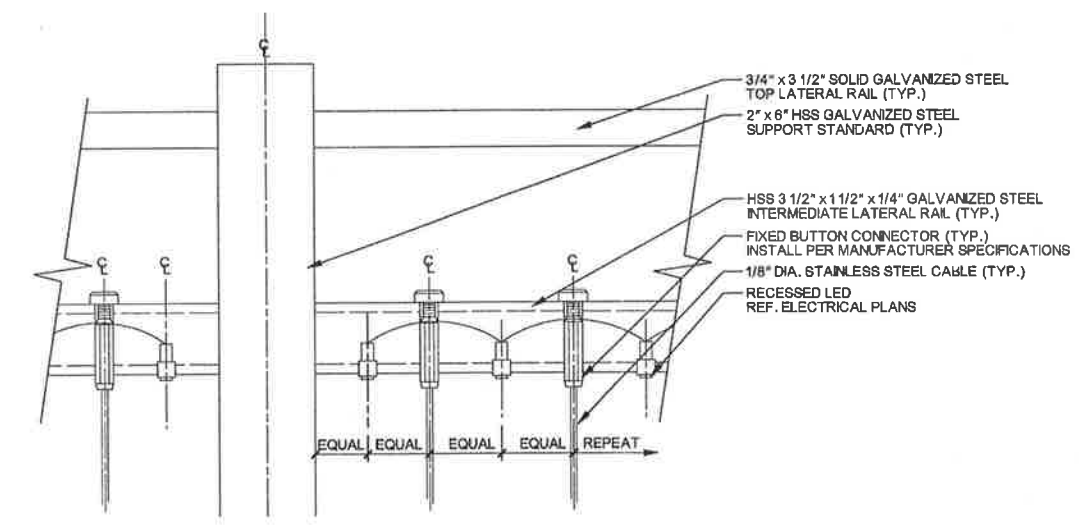
**03 CABLE RAIL (TYP.)**  
SCALE: 1 1/2"=1'-0" SECTION



**04 CABLE CONNECTION-BOTTOM RAIL (TYP.)**  
SCALE: 3"=1'-0" SECTION



**05 CABLE CONNECTION-TOP RAIL (TYP.)**  
SCALE: 3"=1'-0" SECTION



**06 UPPER CABLE CONNECTION-PONTE (TYP.)**  
SCALE: 6"=1'-0" SECTION

**DESIGN SELECTION: RAILING**

<b>CONNECTORS / FITTINGS:</b>	
FIXED BUTTON HEAD CONNECTOR MODEL #: 3287 CONTACT: FEENEY ARCHITECTURAL PRODUCTS OR APPROVED EQUAL	
THREADED TERMINAL CABLE FITTING MODEL #: 3191 CONTACT: FEENEY ARCHITECTURAL PRODUCTS OR APPROVED EQUAL	
<b>CABLES:</b>	
1/8" DIA. STAINLESS STEEL CABLE MODEL #: 4140 CONTACT: FEENEY ARCHITECTURAL PRODUCTS OR APPROVED EQUAL	
FEENEY ARCHITECTURAL PRODUCTS TRANG NGUYEN 1-800-888-2418 WWW.FEENEY-ARCHITECTURAL.COM OR APPROVED EQUAL	
<b>RAILING GENERAL NOTES:</b>	
1. ALL STEEL COMPONENTS TO BE GALVANIZED UNLESS OTHERWISE NOTED.	
2. ALL LATERAL AND INTERMEDIATE STEEL RAILS TO BE PARALLEL TO SIDEWALK SLOPES UNLESS OTHERWISE NOTED.	
3. HSS 6" x 2" x 3/16" GALVANIZED STEEL SUPPORT STANDARDS TO BE PLUMB.	
4. EXPOSED EDGES OF ALL STEEL MEMBERS SHALL BE ROUNDED TO MIN. 1/16" BY GRINDING UNLESS OTHERWISE NOTED.	
5. ALL STANDARD TXDOT TYPE T401 VEHICULAR RAILING POSTS TO BE CENTERED WITH THE PEDESTRIAN RAIL STEEL SUPPORT STANDARDS AS SHOWN ON SHEET L3-02 DETAIL 07.	
6. CONTRACTOR TO SUBMIT PEDESTRIAN RAIL SHOP DRAWINGS FOR APPROVAL.	
7. MAXIMUM 4" SPACING BETWEEN ALL RAIL AND CABLE MEMBERS.	
8. 3/16" WELD REQUIRED FOR ALL STEEL MEMBER CONNECTIONS UNLESS OTHERWISE NOTED.	
9. REF. STRUCTURAL PLANS FOR ALL POST EMBEDMENT DETAILS.	
10. CONTRACTOR TO PROVIDE A 20' CABLE RAIL MOCK-UP ON SITE FOR APPROVAL PRIOR TO WORK COMMENCEMENT.	



THE SEAL APPEARING ON THIS DOCUMENT WAS AUTHORIZED BY LENNY L. HUGHES, R.L.A. #2067 ON 04-29-2010. ALTERATION OF A SEALED DOCUMENT WITHOUT PROPER NOTIFICATION TO THE RESPONSIBLE LANDSCAPE ARCHITECT IS AN OFFENSE UNDER THE TEXAS ENGINEERING PRACTICE ACT. THE RECORD COPY OF THIS DRAWING IS ON FILE AT THE OFFICE OF HALFF ASSOCIATES, INC., 1201 NORTH BOWSER, RICHARDSON, TEXAS 75081. TSP# FIRM #912

NO.	REVISION	BY	DATE
<b>ADDISON TOWN OF ADDISON DALLAS COUNTY, TEXAS</b>			
<b>VITRUVIAN PARK BRIDGES</b>			
<b>GENERAL DETAILS</b>			
<b>HALFF</b> 1201 NORTH BOWSER ROAD, RICHARDSON, TEXAS 75081-2275 TEL (214) 346-8200 FAX (214) 739-0065			
PROJECT	DESIGN	DRAWN	DATE
27379	JDB	AHH	APRIL 2010
			FILE
			SHEET
			L3-01