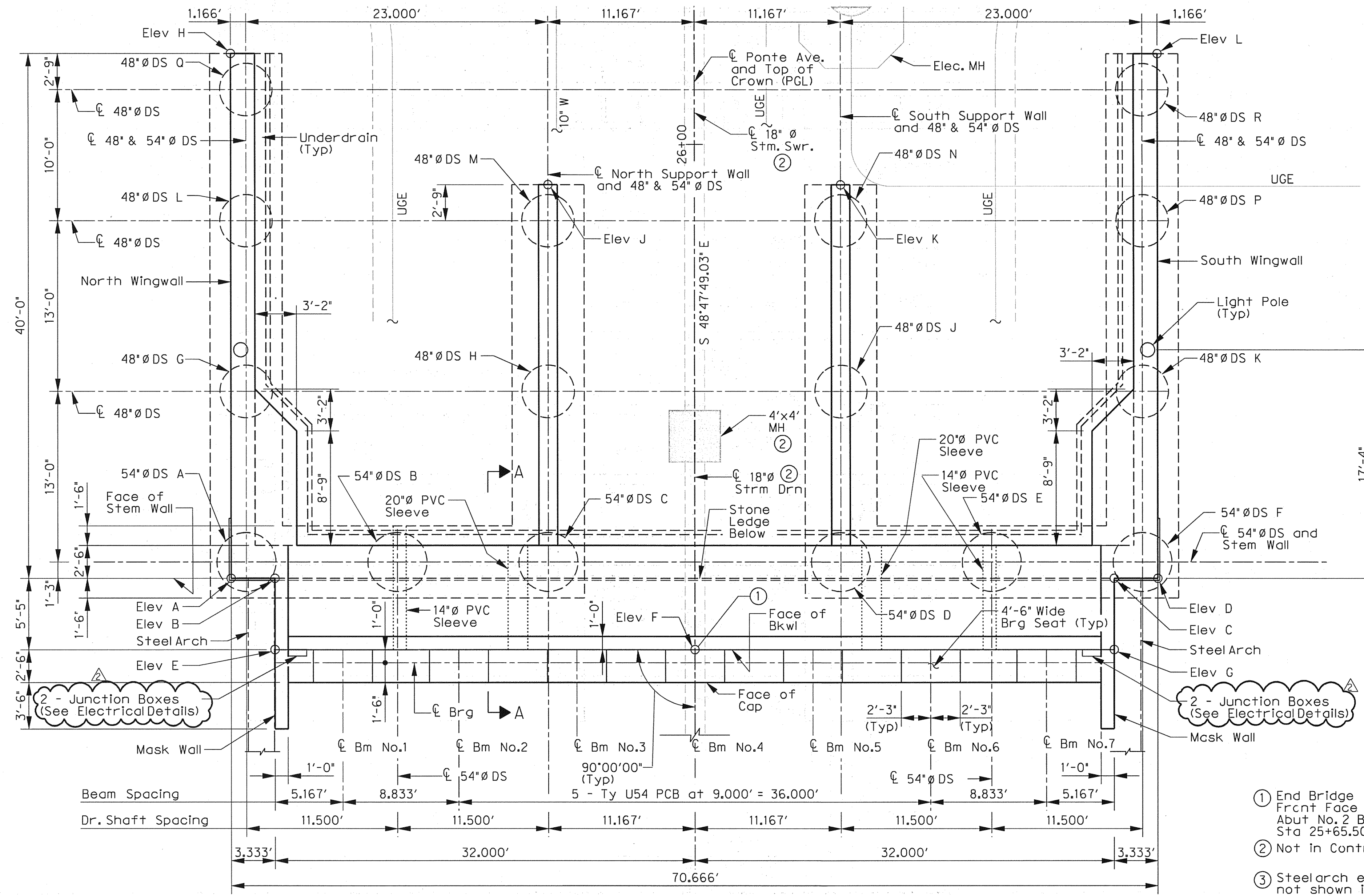
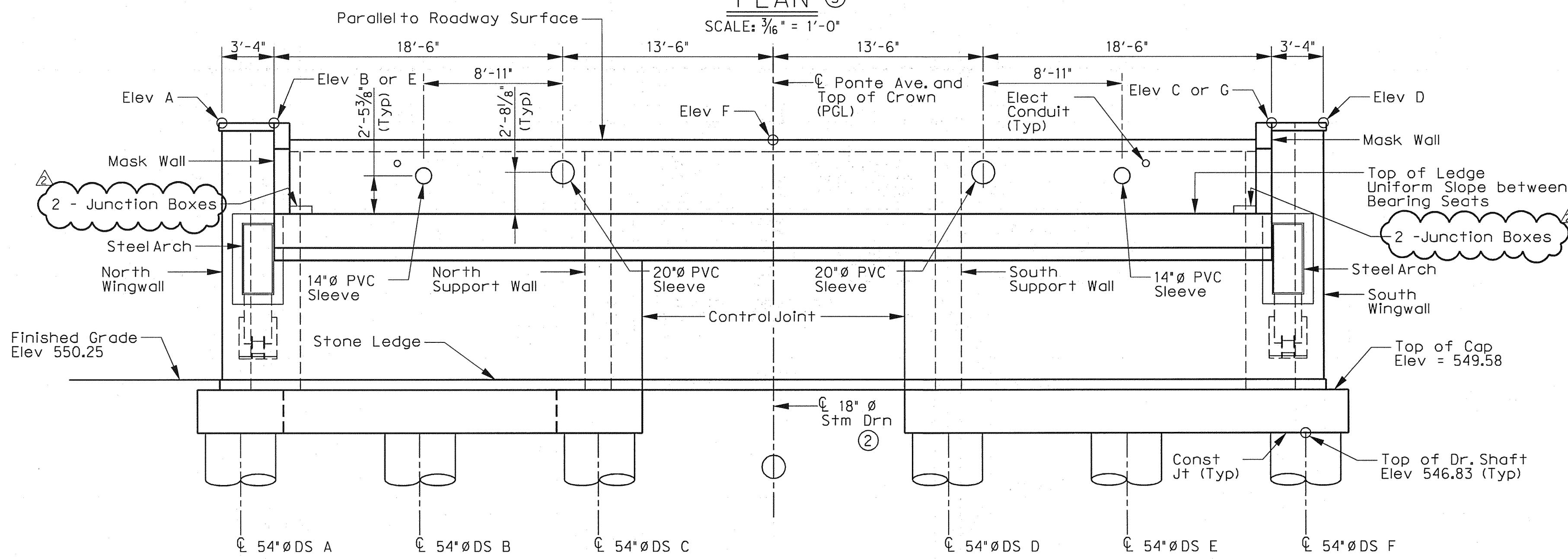


USER: ah2140
 PROJECT # 27379 OFFICE: RCH
 FILE: 27379-SC-PONTIEB-AB01-02.dgn
 TIME: 2:13:50 PM
 DATE: 5/19/2010

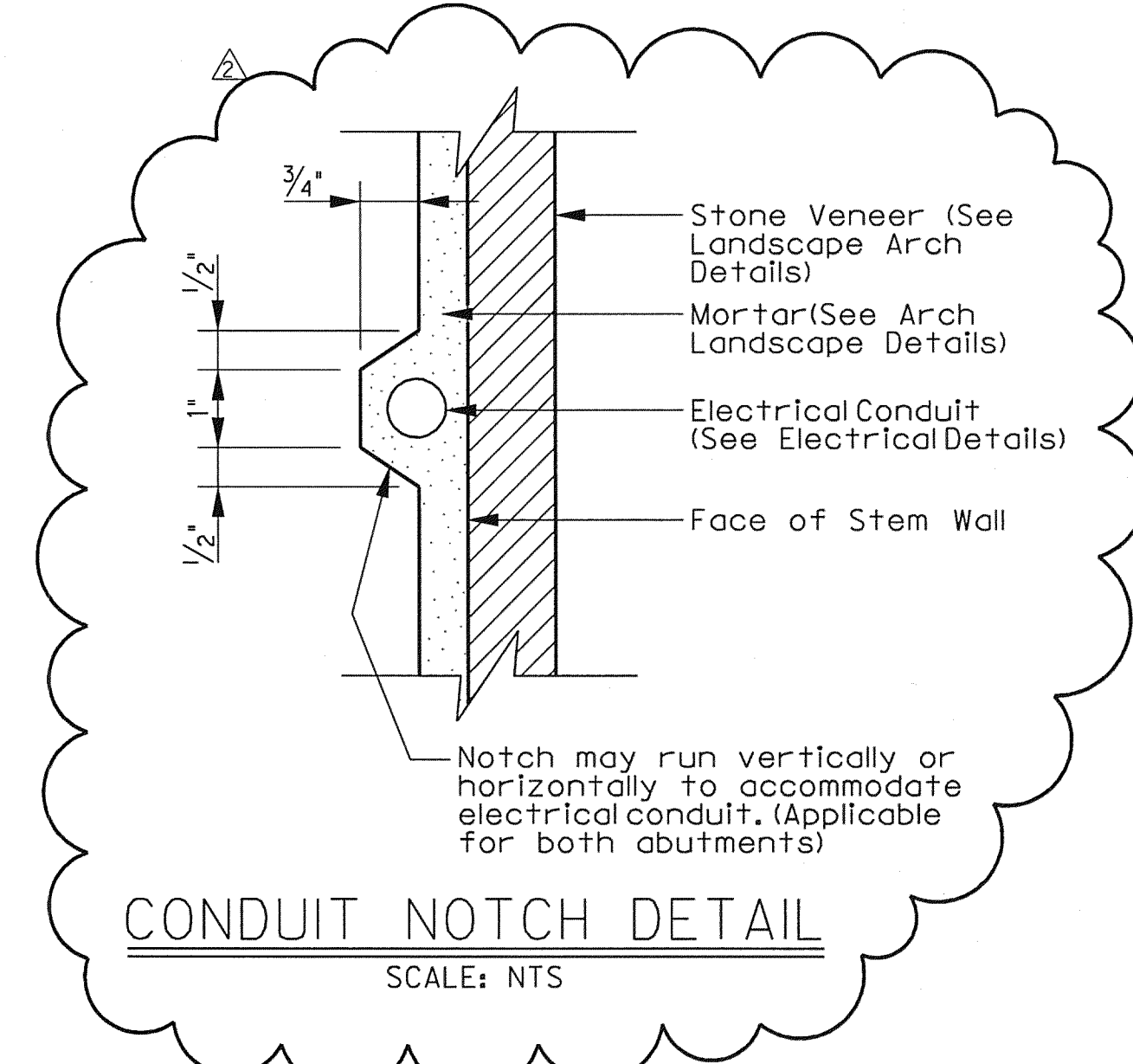


PLAN 3
 SCALE: 3/16" = 1'-0"

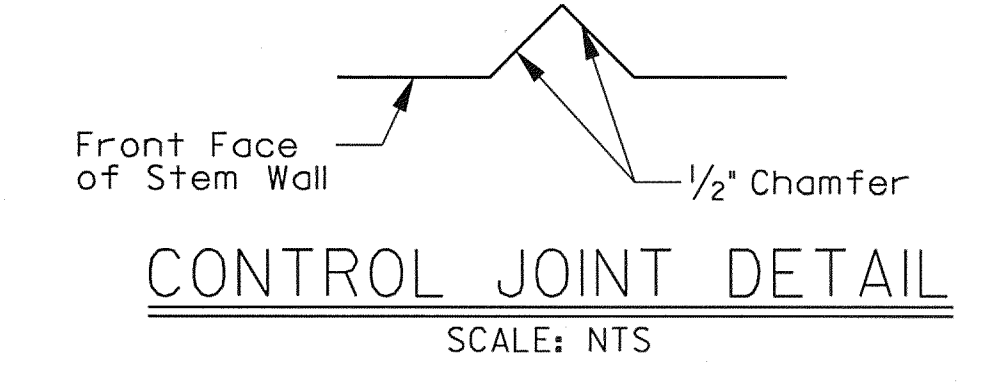


ELEVATION
 SCALE: 3/16" = 1'-0"

General Notes:
 See sheet 1 of 10 for General Notes.



CONDUIT NOTCH DETAIL
 SCALE: NTS



CONTROL JOINT DETAIL
 SCALE: NTS

- ① End Bridge Frnt Face of Abut No. 2 Bkwl Sta 25+65.50
- ② Not in Contract
- ③ Steelarch not shown in plan for clarity.



THE SEAL APPEARING ON THIS DOCUMENT WAS AUTHORIZED BY ERIC S. CHRISTENSEN, P.E., #85412 ON 05-19-2010. ALTERATION OF A SEALED DOCUMENT WITHOUT PROPER NOTIFICATION TO THE RESPONSIBLE ENGINEER IS AN OFFENSE UNDER THE TEXAS ENGINEERING PRACTICE ACT. THE RECORD COPY OF THIS DRAWING IS ON FILE AT THE OFFICES OF HALFF ASSOCIATES, 1201 NORTH BOWSER ROAD, RICHARDSON, TEXAS, 75081, TOLPE FIRM #1-312.

Addendum #2		ESC	05/19/10
NO.	REVISION	BY	DATE
TOWN OF ADDISON DALLAS COUNTY, TEXAS			
VITRUVIAN PARK BRIDGES PONTE AVENUE			
ABUTMENT NO. 2 PLAN AND ELEVATION			
HALFF		1201 NORTH BOWSER ROAD, RICHARDSON, TEXAS 75081-2275 TEL (214) 346-6200 FAX (214) 739-0095	
PROJECT	DESIGN	DRAWN	DATE
27379	ESC	AHH	APRIL 2010
FILE	SHEET		
-	S1-06		