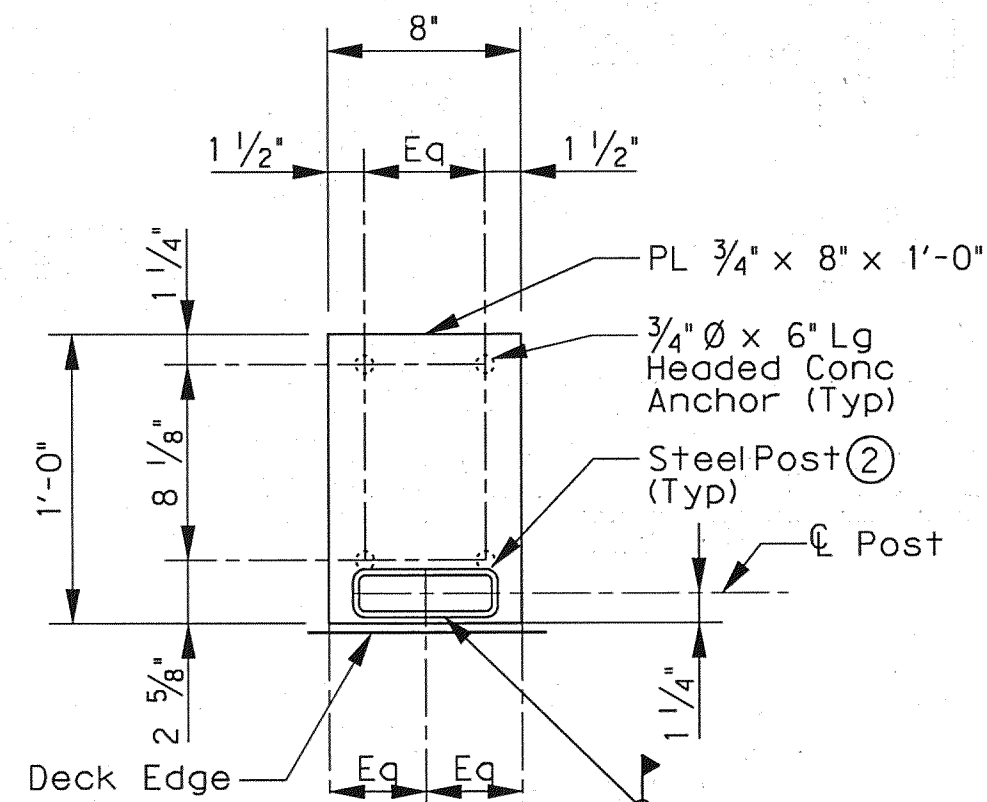


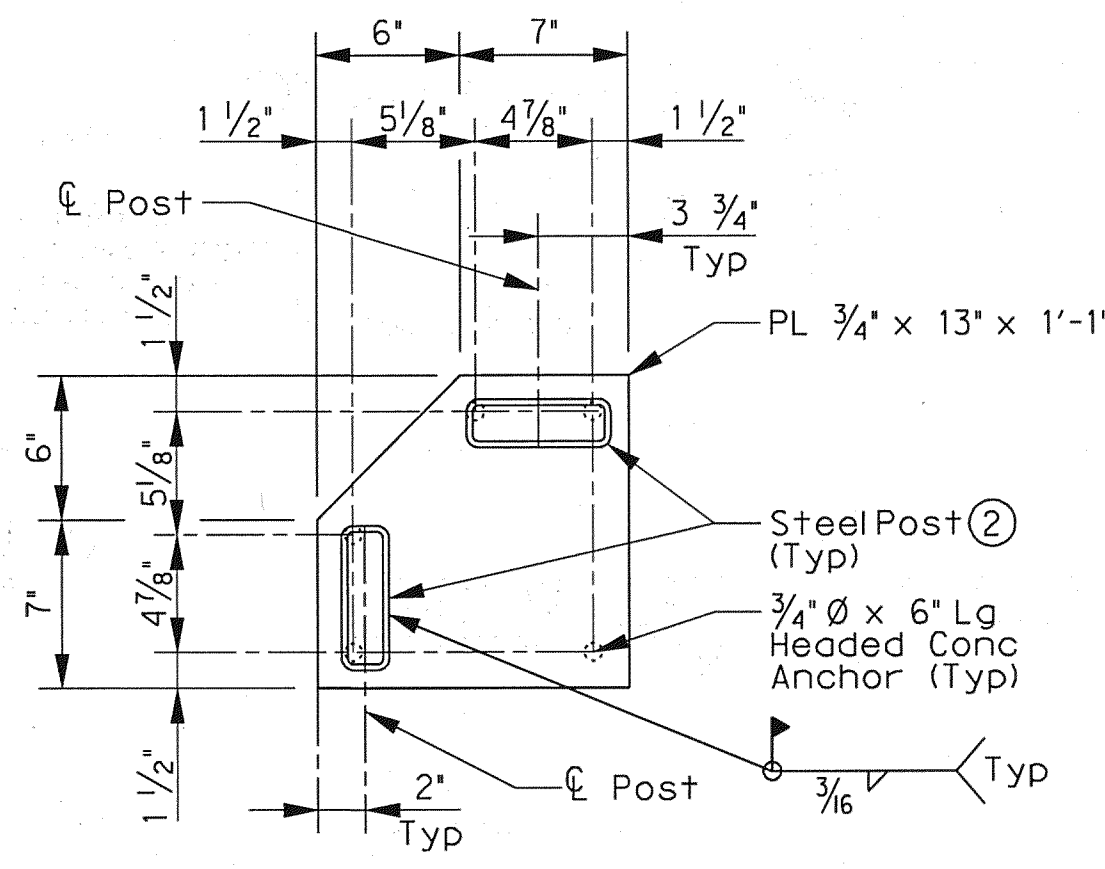
TYPICAL RAIL POST EMBED PLATE DETAIL 1

SCALE: 1 1/2" = 1'-0"



RAIL POST EMBED PLATE AT BRIDGE SEJ DETAIL 1

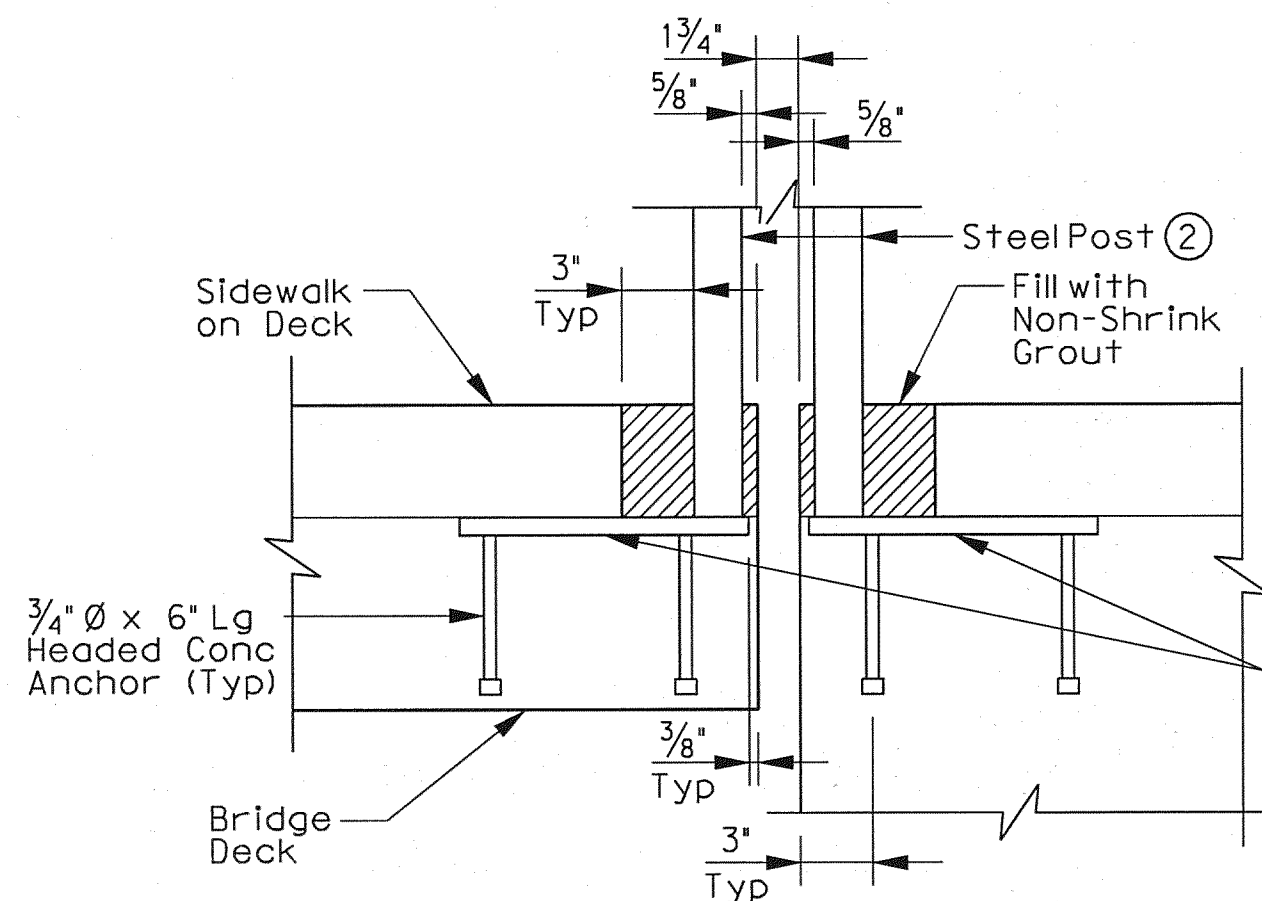
SCALE: 1 1/2" = 1'-0"



RAIL POST EMBED PLATE AT WINGWALL CORNERS DETAIL 1

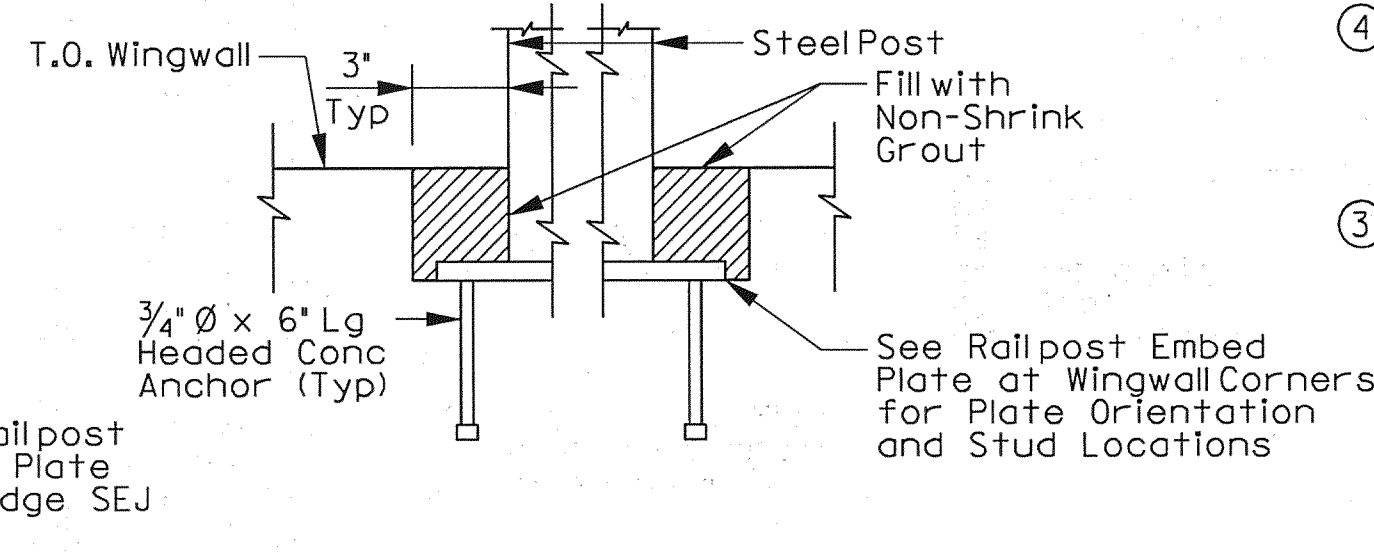
SCALE: 1 1/2" = 1'-0"

- 1 Rail embeds are subsidiary to Ped Rail Item.
- 2 Leave the bottom one inch of post ungalvanized.



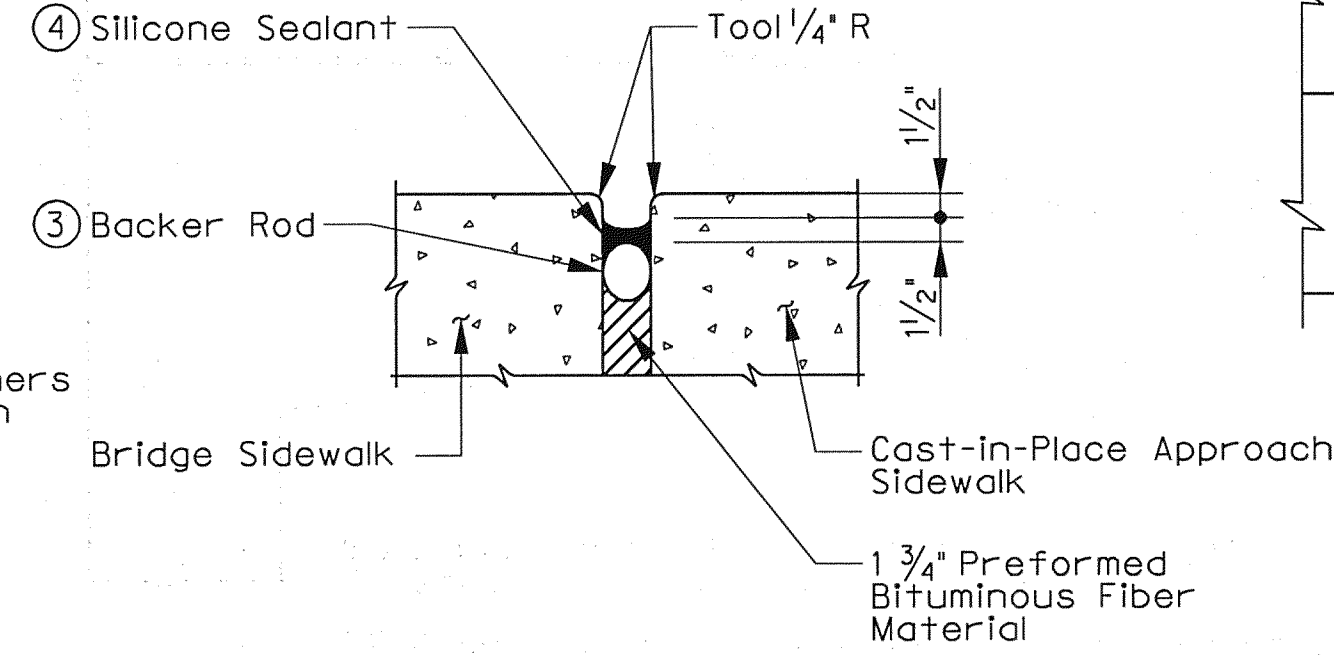
RAIL POST EMBED PLATE AT BRIDGE SEJ SECTION 1

SCALE: 1 1/2" = 1'-0"



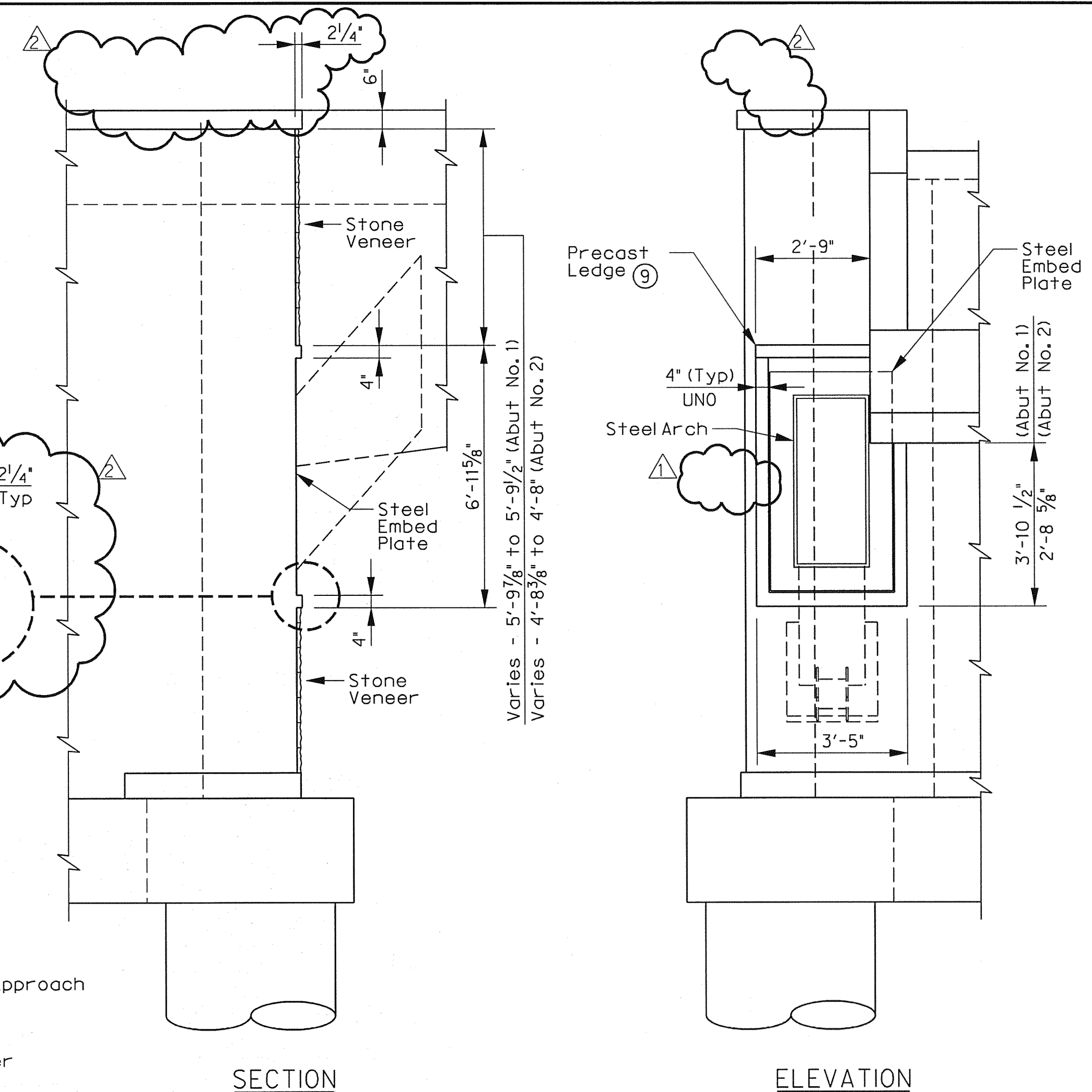
RAIL POST EMBED PLATE AT WINGWALL CORNERS SECTION 1

SCALE: 1 1/2" = 1'-0"



SIDEWALK JOINT DETAIL

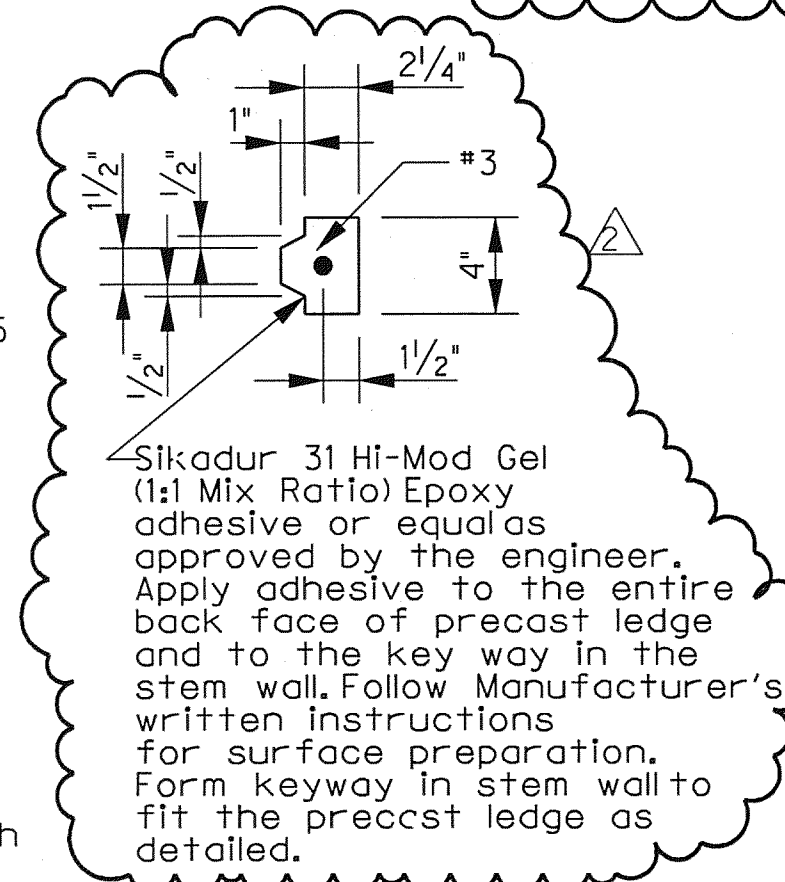
SCALE: NTS



STONE COLLAR DETAILS 2

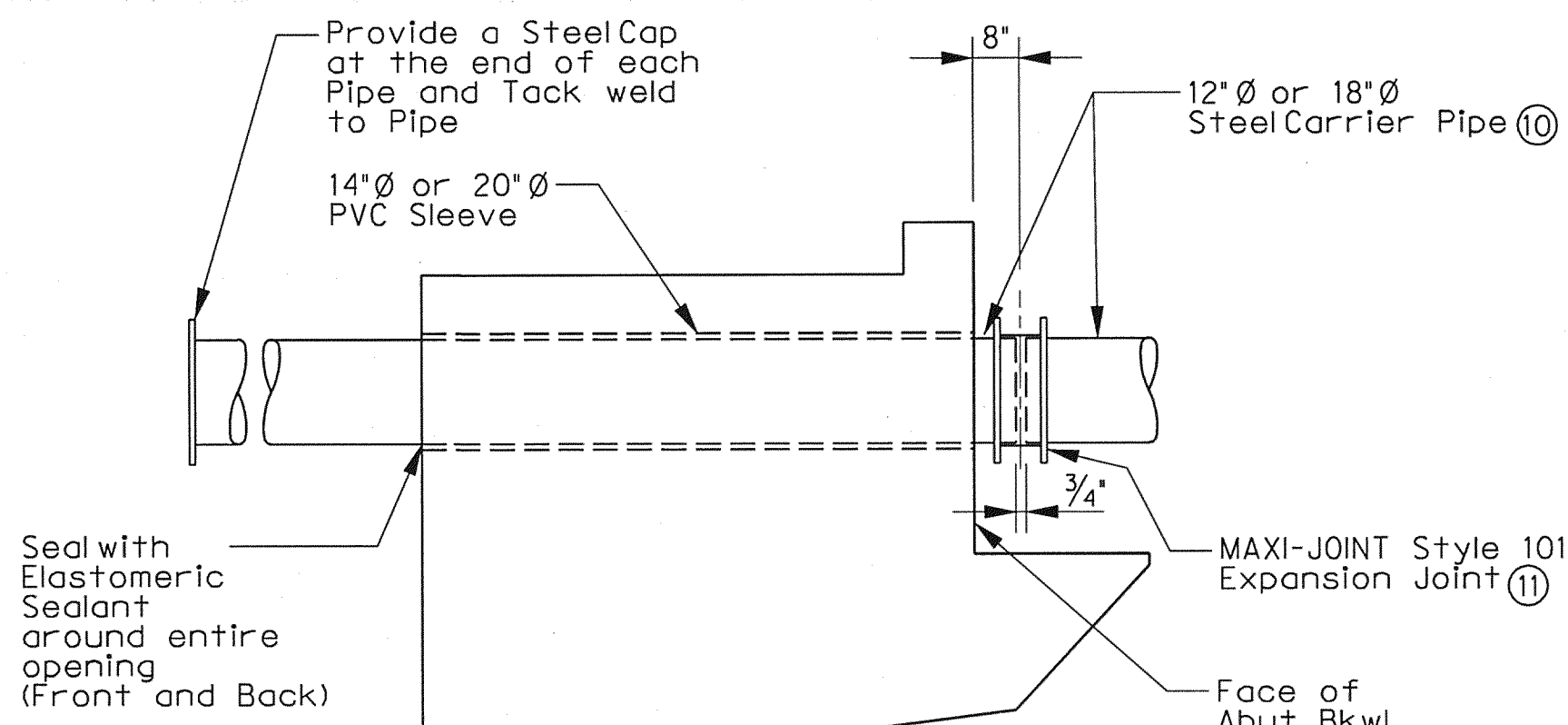
SCALE: 3/8" = 1'-0"

- 8 For Abutment details and bar details not shown, see Drawing Nos. SI-05 to SI-14.
- 9 Prior to Arch Installation a temporary stone support (L5 x 3 x 1/4 (LLV)) shall be used. Installation with three 1/2 inch Hi-Ti Quik Bolt 3 expansion anchors embedded 3 1/2 min. Coordinate removal of stone veneer and temporary stone support with steel arch erector. Replace the temporary stone ledge with precast ledge after arch has been installed. At the Contractor's option, the stone veneer may be installed after the Arch is fully erected. If this option is used, the temporary stone support (L5x3x1/4) is not needed. For either option, the precast ledge shall be installed only after the Arch is fully erected.



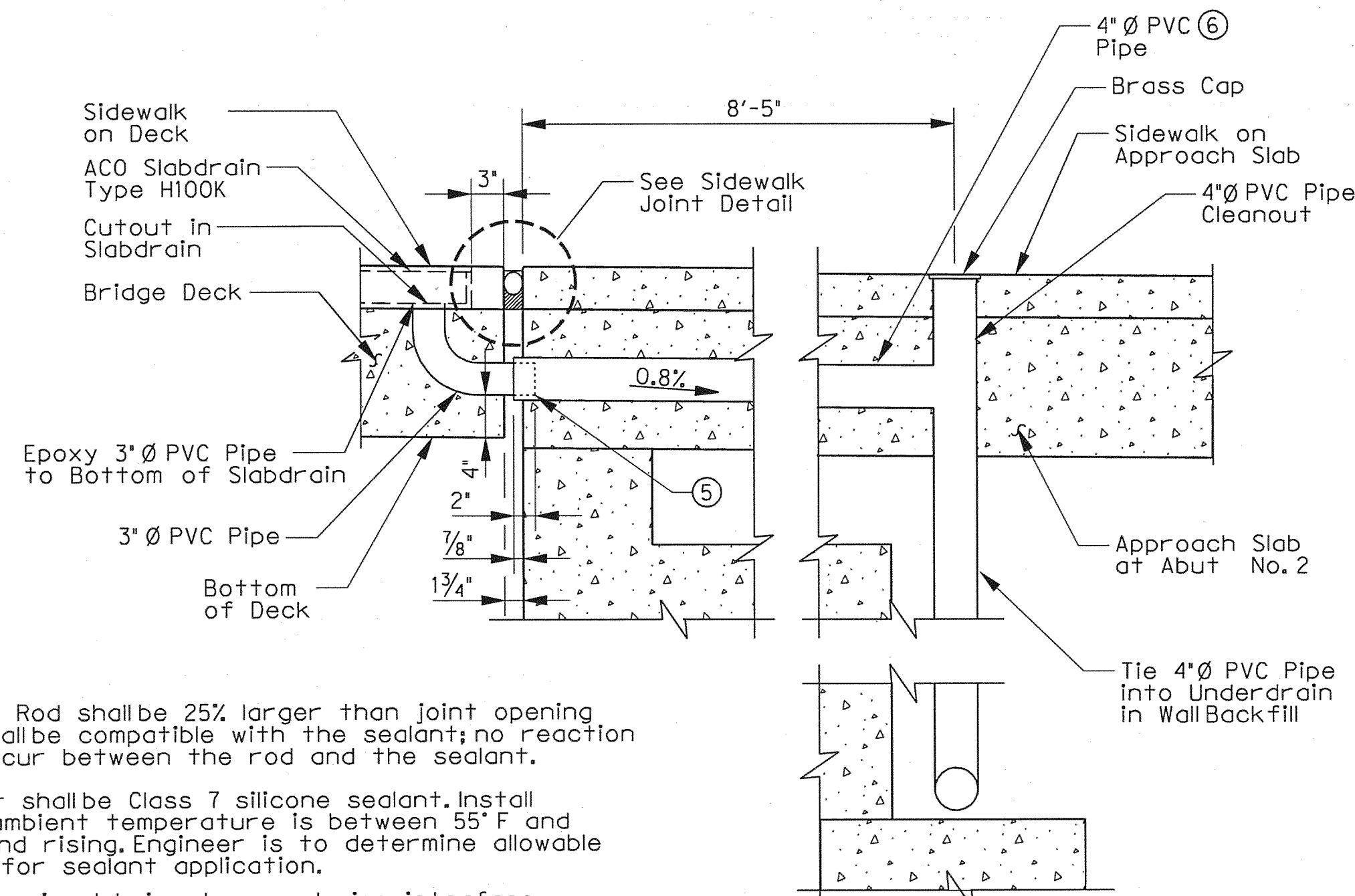
PRECAST LEDGE DETAIL

SCALE: NTS



STEEL PIPE EMBED AND EXPANSION JOINT DETAIL

SCALE: NTS



DRAIN DETAIL

SCALE: NTS

- 3 Backer Rod shall be 25% larger than joint opening and shall be compatible with the sealant; no reaction shall occur between the rod and the sealant.
- 4 Sealant shall be Class 7 silicone sealant. Install when ambient temperature is between 55°F and 85°F and rising. Engineer is to determine allowable hours for sealant application.
- 5 Provide pipe lubricant around pipe interface.
- 6 Provide bends in PVC pipe where necessary to avoid thickened wingwall. See Sheet SI-14 for quantity of drain pipe.
- 7 Drain located in both sidewalks at Abut No. 2.



Addendum #2		ESC	05/19/10
NO.	REVISION	BY	DATE
Addison TOWN OF ADDISON DALLAS COUNTY, TEXAS			
VITRUVIAN PARK BRIDGES PONTE AVENUE			
MISCELLANEOUS DETAILS			
HALFF 1201 NORTH BOWSER ROAD, RICHARDSON, TEXAS 75081-2275 TEL (214) 346-6200 FAX (214) 739-0095			
PROJECT	DESIGN	DRAWN	DATE
27379	ESC	AHH	APRIL 2010
FILE	SHEET		
-	S1-18		