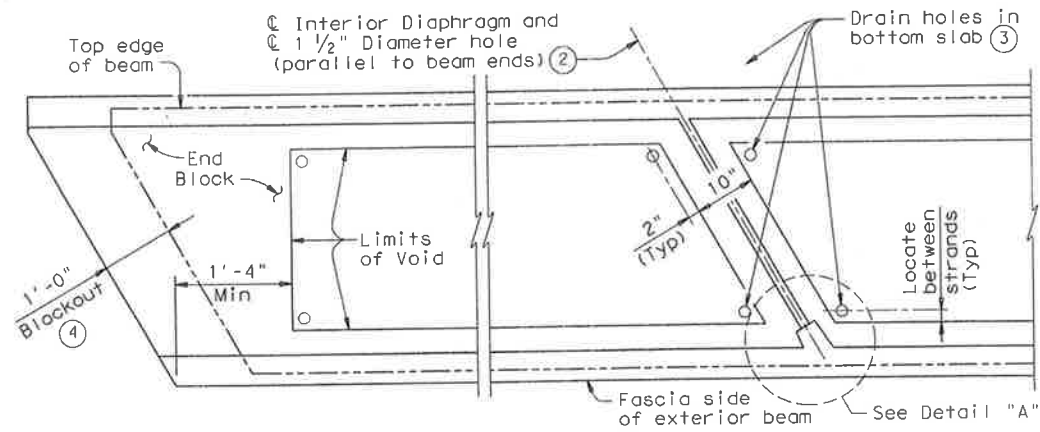


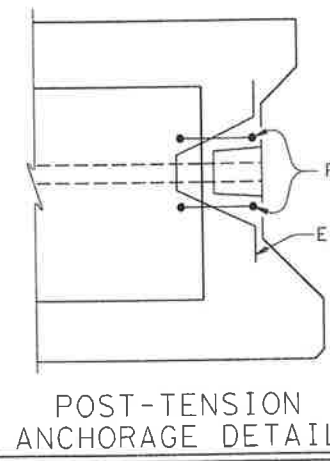
DISCLAIMER: The use of this standard is governed by the "Texas Engineering Practice Act". No warranty of any kind is made by TxDOT for any purpose whatsoever. TxDOT assumes no responsibility for the conversion of this standard to other formats or for incorrect results or damages resulting from its use.

LEVELS DISPLAYED

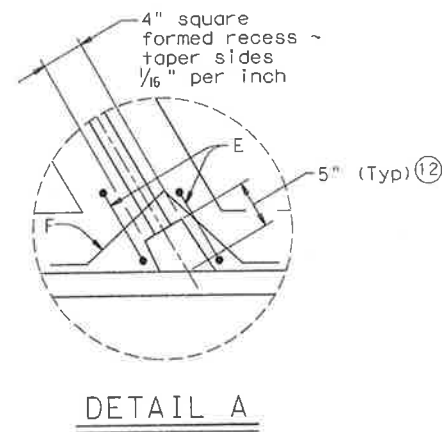


BLOCKOUT, INTERIOR DIAPHRAGM AND DRAIN DETAILS

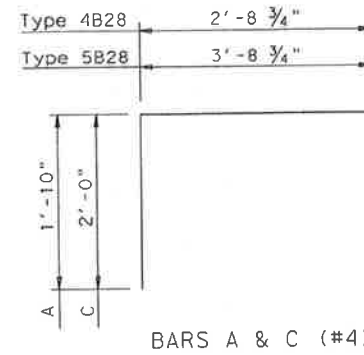
(Showing 30° skew)



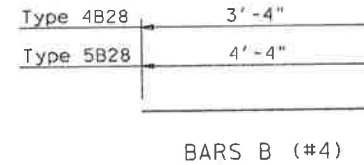
POST-TENSION ANCHORAGE DETAIL



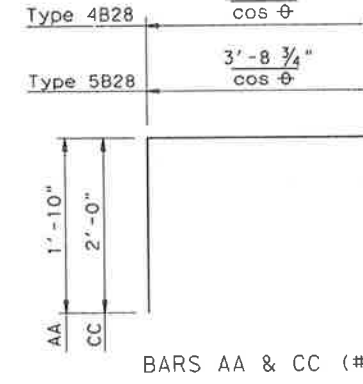
DETAIL A



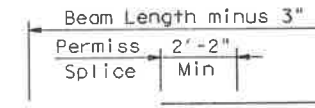
BARS A & C (#4)



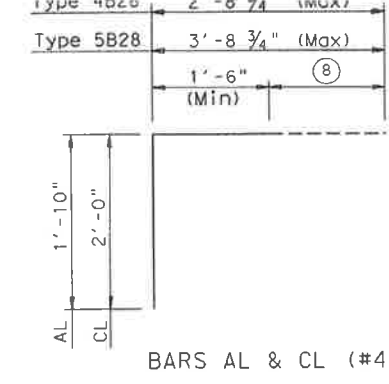
BARS B (#4)



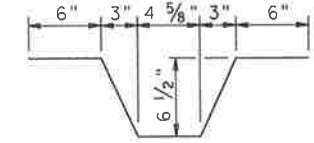
BARS AA & CC (#4)



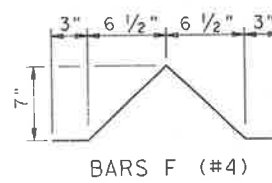
BARS D (#5)
Permissible splices to be placed in middle third of span



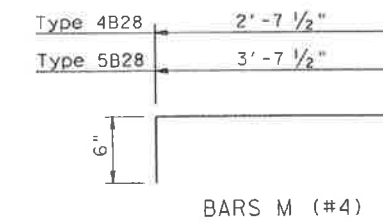
BARS AL & CL (#4)



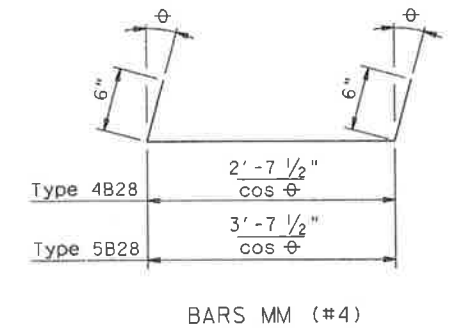
BARS E (#4)



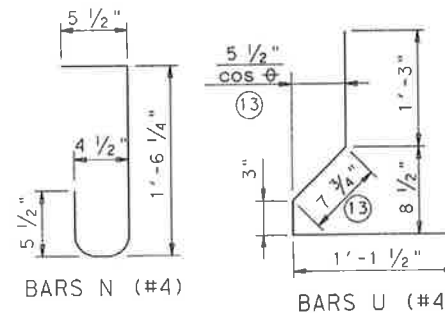
BARS F (#4)



BARS M (#4)

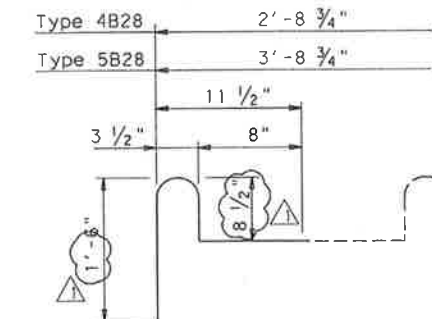


BARS MM (#4)



BARS N (#4)

BARS U (#4)



BARS Z (#4) ①

At fabricator's option, Bars Z pairs may be fabricated using one continuous bar. If this option is used, Bars B at Bar Z locations (only) may be omitted.

- ① Bars Z are required for beams topped with a cast-in-place concrete slab only.
- ② Post-tensioning tendons are required for beams not topped with a Min 5" cast-in-place concrete slab. See span details for number and spacing of transverse tendons. Cast interior diaphragms in exterior beams and beams that serve temporarily as exterior beams in staged constructed bridges. Form 3" Dia holes in interior beams. See "Blockout, Interior Diaphragm, and Drain Details". See standard BBPT for details.
- ③ Place drain holes (1" Dia PVC Sch 40 Pipe) as shown in all beam void corners including each side of interior diaphragms. See "Blockout, Interior Diaphragm, and Drain Details".
- ④ Blockouts required at ends of all beams. Extend beam reinforcement into blockouts.
- ⑧ Cut as required to maintain one inch clear between bars.
- ⑫ 5" (Typ) or sufficient depth to provide 1" Cover on cut-off tendon. See BBPT for details.
- ⑬ Dimension will vary slightly with skew. Adjust as necessary.

Modifications ESC 04/29/10

△ Revised Z bar



THE SEAL APPEARING ON THIS DOCUMENT WAS AUTHORIZED BY ERIC S. CHRISTIANSEN, P.E. 85412 ON 04-29-2010. ALTERATION OF A SEALED DOCUMENT WITHOUT PROPER NOTIFICATION TO THE RESPONSIBLE ENGINEER IS AN OFFENSE UNDER THE TEXAS ENGINEERING PRACTICE ACT. THE RECORD COPY OF THIS DRAWING IS ON FILE AT THE OFFICES OF HALFF ASSOCIATES, 1201 NORTH BOWSER ROAD, RICHARDSON, TEXAS, 75081. TYPE FIRM #F-312.

HL93 LOADING SHEET 3 OF 3

Texas Department of Transportation
Bridge Division
**PRESTRESSED CONCRETE
BOX BEAM DETAILS
(TYPE B28)**

BB-B28 (MOD)

FILE: bbstde02.dgn	DN: TxDOT	CK: TxDOT	DW: TxDOT	CK: TxDOT
© TxDOT December 2006	DISTRICT	FEDERAL AID PROJECT		SHEET
REVISIONS				S4-06
COUNTY	CONTROL	SECT	JOB	HIGHWAY