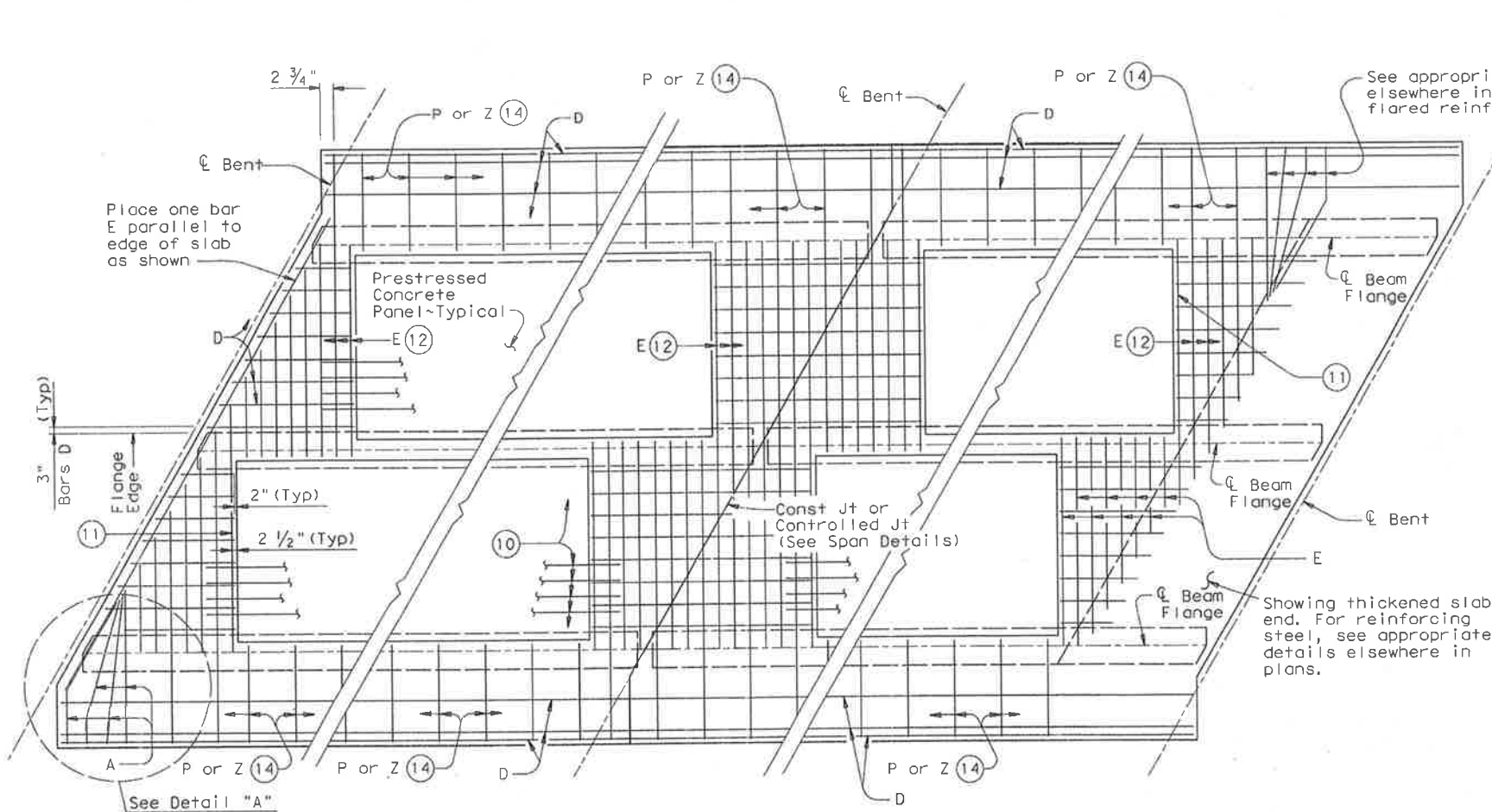


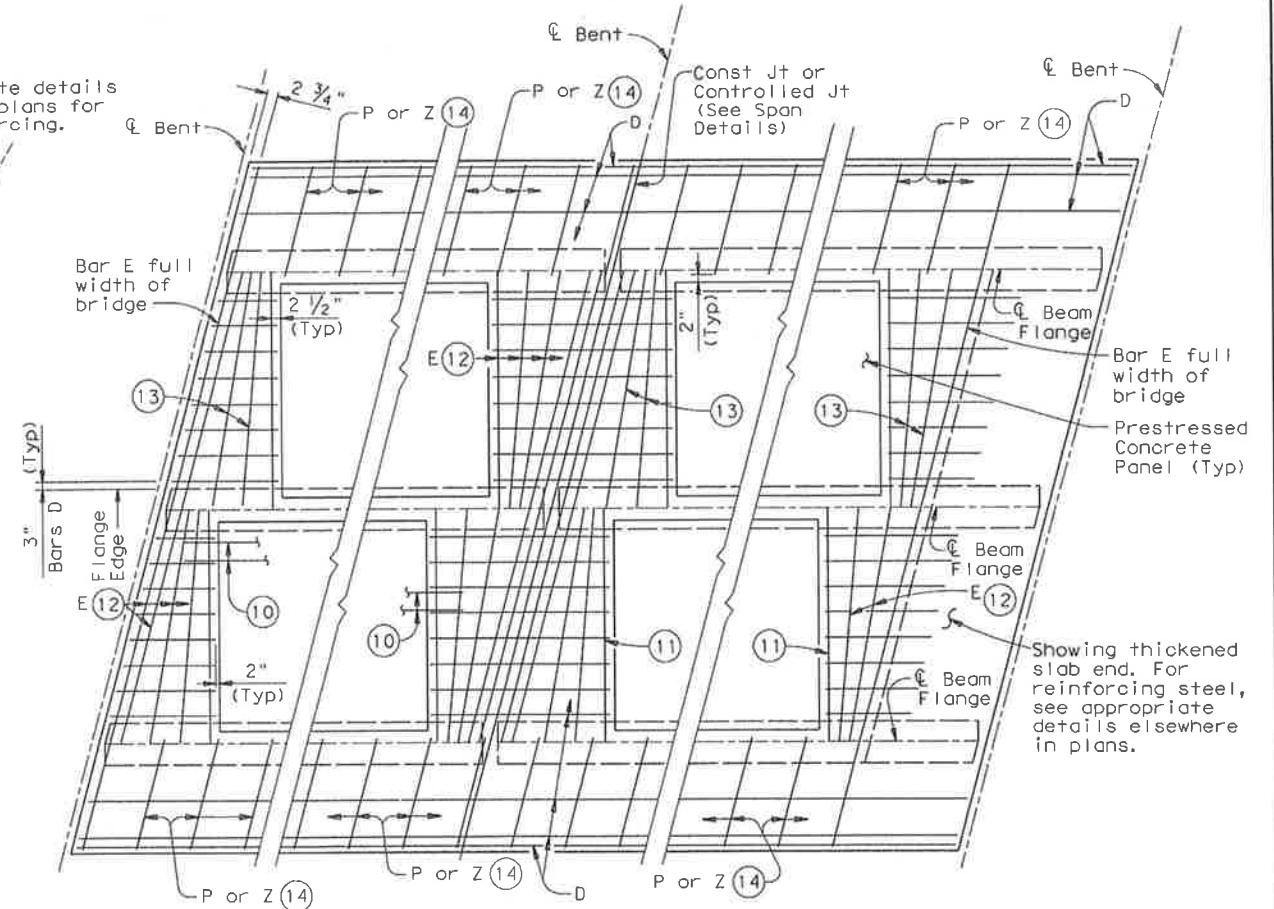
DISCLAIMER: The use of this standard is covered by the "Texas Engineering Practice Act". No warranty or liability is assumed by TxDOT for any purpose whatsoever. TxDOT assumes no liability for the conversion of this standard to other formats or for incorrect results or damages resulting from its use.



AT ALL SPAN ENDS UNLESS NOTED OTHERWISE      AT INTERIOR BENTS      AT THICKENED END SLABS ON STEEL, CONC I-BEAMS, I-GIRDERS OR U-BEAMS

**PLAN OF SLABS WITH NORMAL REINFORCEMENT**

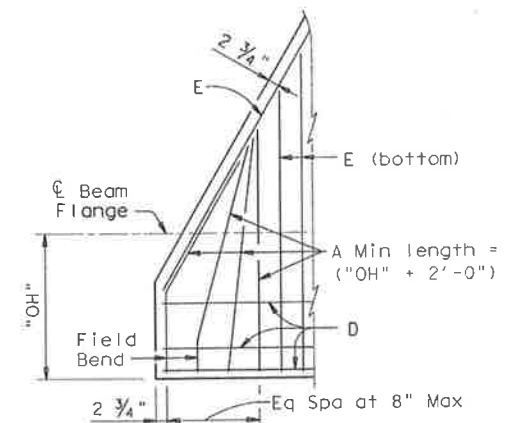
(Showing bottom reinforcing steel. See Span Details for top reinforcement steel.)



AT ALL SPAN ENDS UNLESS NOTED OTHERWISE      AT INTERIOR BENTS      AT THICKENED END SLABS ON STEEL, CONC I-BEAMS, I-GIRDERS OR U-BEAMS

**PLAN OF SLABS WITH SKEWED REINFORCEMENT**

(Showing bottom reinforcing steel. See Span Details for top reinforcement steel.)



**DETAIL "A"**

**APPROXIMATE QUANTITIES FOR ONE SQUARE FOOT OF SLAB (15)**

Slab Thickness (In.)	Class S Concrete CY
8	0.0123
8 1/4	0.0131
8 1/2	0.0139

(For Contractor's information only)

- 8 Max Spacing as listed unless otherwise shown.
- 10 At connection with cast-in-place slab, extend longitudinal panel reinforcement 1'-0" (+2", -0") past panel end. Alternatively, provide (#3) x 2'-0" dowels at 6" Max spacing and extend dowels 1'-0" past panel end.
- 11 Maintain one Bar E(#5) parallel to panel ends (Typ).
- 12 Bars E(#5) not continuous over beam flanges must overlap beam flange 6" Min.
- 13 Add flared Bars E(#5) (Min Spa = 2", Max Spa = 10") as required at panel ends.
- 14 Where possible, Bars E(#5) may be extended into overhangs to replace Bars P(#4). Bars Z(#4) are required for sloped overhangs with U-Beams.
- 15 These approximate quantities are for a typical square foot of cast-in-place slab over the PCP. They do not include an allowance for slab overhangs, thickened ends at diaphragms, or the portion between panels over the beams.

**TABLE OF REINFORCING STEEL (8)**

BAR	SIZE	Max Spa (in.)
A	#5	~
D	#5	9
E	#5	6
P	#4	18
UP	#4	~
Z	#4	18



**PRESTRESSED CONCRETE PANELS  
OPTIONAL DECK DETAILS  
FOR BEAM SPANS**

PCP

FILE: pcpstdel.dgn	DN: TxDOT	CK: TxDOT	DN: TxDOT	CK: TxDOT
© TxDOT April 2006	DISTRICT	FEDERAL AID PROJECT	SHEET	
REVISIONS				
08-07: Added I-Girders and added note to WWR splice detail.	COUNTY	CONTROL	SECT	JOB
				HIGHWAY

S4-10