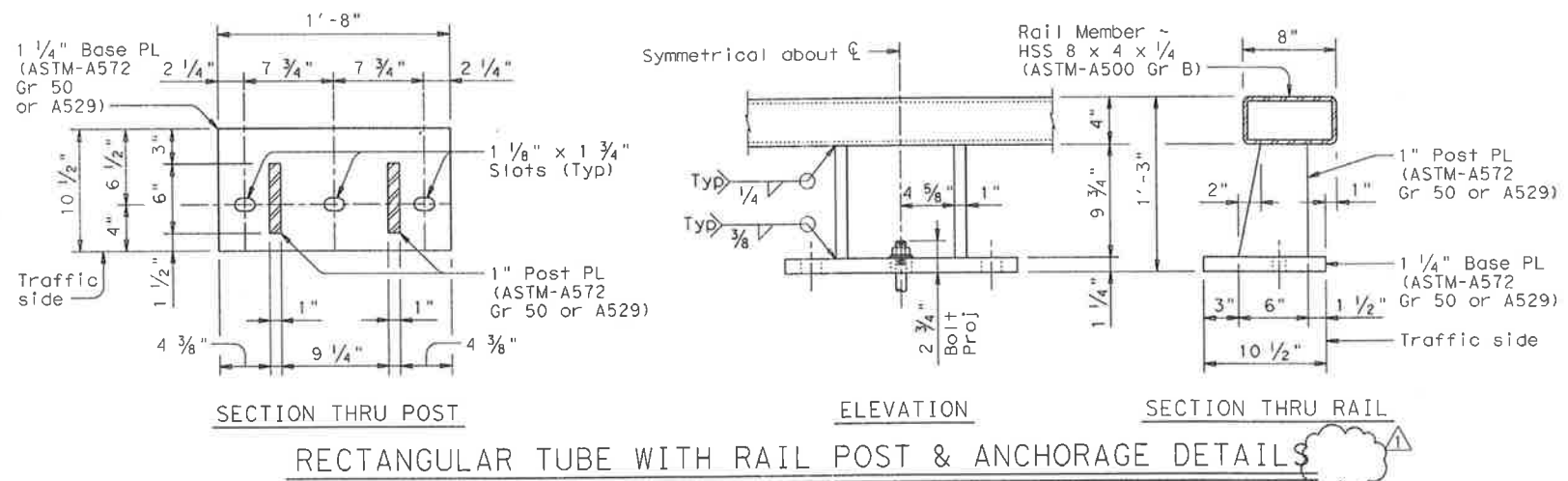


DISCLAIMER: The use of this standard is governed by the "Texas Engineering Practice Act". No warranty of any kind is made by TxDOT for any purpose whatsoever. TxDOT assumes no responsibility for the conversion of this standard to other formats or for incorrect results or damages resulting from its use.

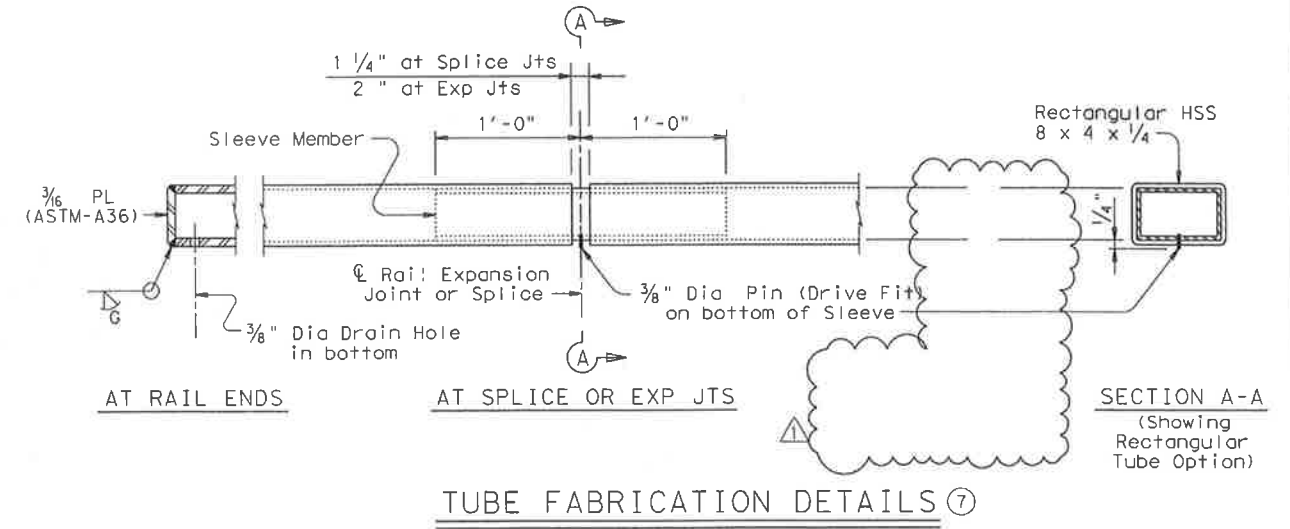
ACC:	
LEVELS DISPLAYED	
1	



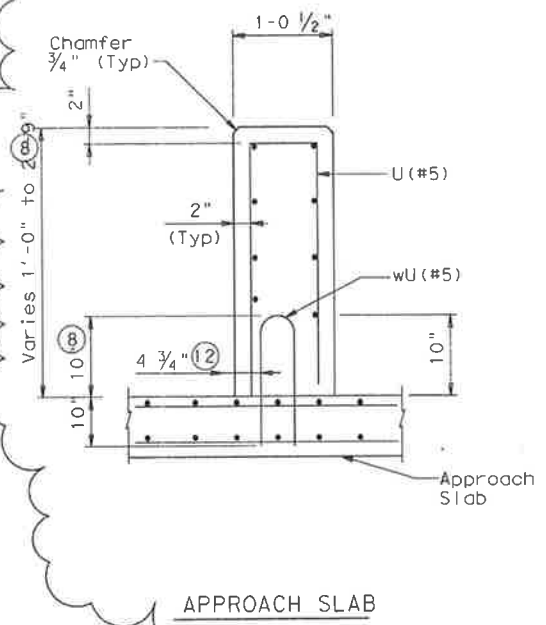
RECTANGULAR TUBE WITH RAIL POST & ANCHORAGE DETAILS



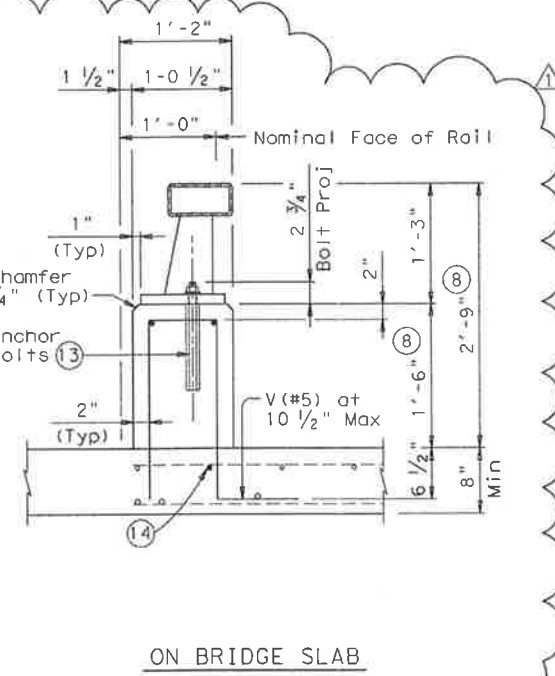
04.29.10
 THE SEAL APPEARING ON THIS DOCUMENT WAS AUTHORIZED BY ERIC S. CHRISTIANSEN, P.E. #85412 ON 04-29-2010. ALTERATION OF A SEALED DOCUMENT WITHOUT PROPER NOTIFICATION TO THE RESPONSIBLE ENGINEER IS AN OFFENSE UNDER THE TEXAS ENGINEERING PRACTICE ACT. THE RECORD COPY OF THIS DRAWING IS ON FILE AT THE OFFICES OF HALFF ASSOCIATES, 1201 NORTH DOWNEY ROAD, RICHARDSON, TEXAS, 75081. TDP# FIRM #F-312.



TUBE FABRICATION DETAILS



APPROACH SLAB



ON BRIDGE SLAB

SECTIONS THRU RAIL

- 8 Increase 2" for structures with overlay.
- 12 5 1/2" when vertical reinforcing has closer clear cover over horizontal reinforcing in abutment wingwalls or retaining walls on traffic side of wall.
- 13 See "General Notes" for anchor bolt information.
- 14 Top longitudinal slab bar may be adjusted laterally 3" plus or minus to tie reinforcing.

Modifications	ESC	04/29/10
Revised End Rail, Eliminate Connections, and modified material notes		

SHEET 2 OF 3



TRAFFIC RAIL

TYPE T401 (MOD)

FILE: r1std006.dgn	DW: TxDOT	CK: TxDOT	DW: JTR	CK: JMH
© TxDOT April 2009	DISTRICT	FEDERAL AID PROJECT		SHEET
REVISIONS				S4-17
COUNTY	CONTROL	SECT	JOB	HIGHWAY