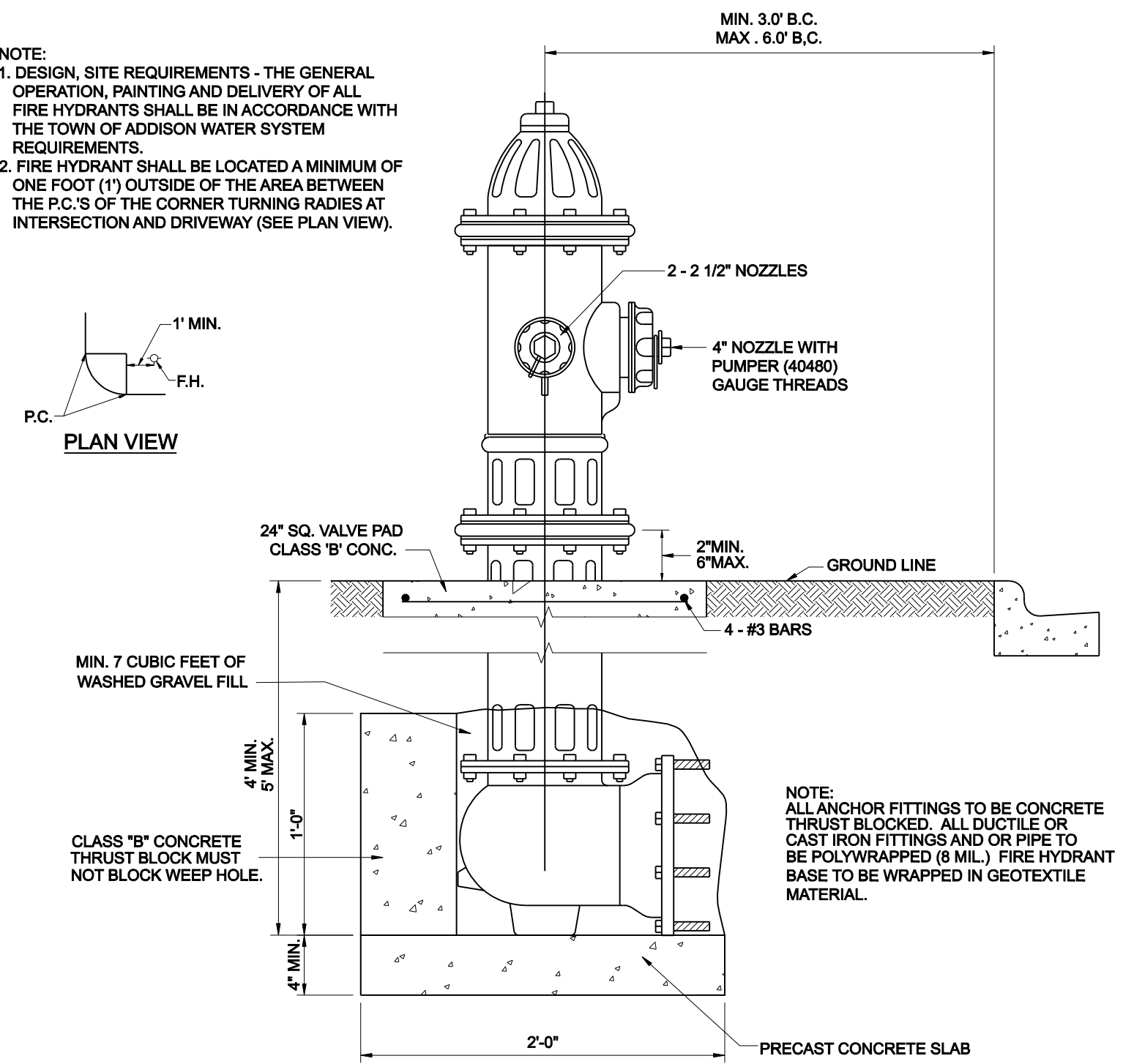
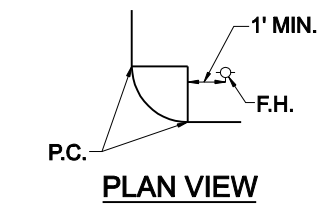
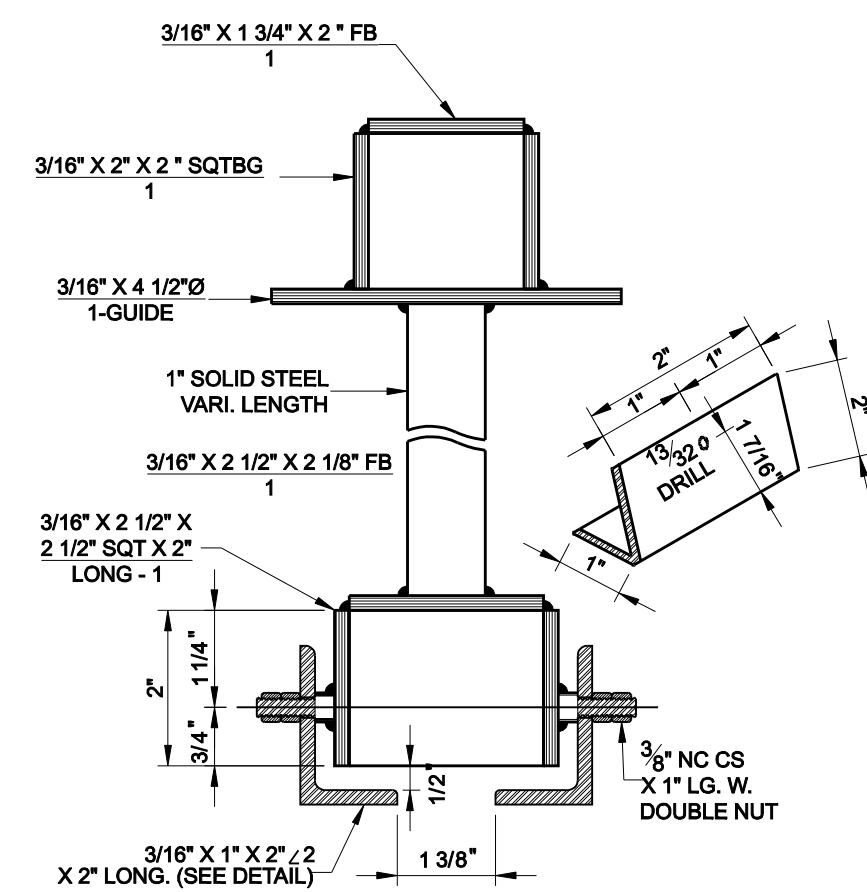


NOTE:
 1. DESIGN, SITE REQUIREMENTS - THE GENERAL OPERATION, PAINTING AND DELIVERY OF ALL FIRE HYDRANTS SHALL BE IN ACCORDANCE WITH THE TOWN OF ADDISON WATER SYSTEM REQUIREMENTS.
 2. FIRE HYDRANT SHALL BE LOCATED A MINIMUM OF ONE FOOT (1') OUTSIDE OF THE AREA BETWEEN THE P.C.'S OF THE CORNER TURNING RADIES AT INTERSECTION AND DRIVEWAY (SEE PLAN VIEW).

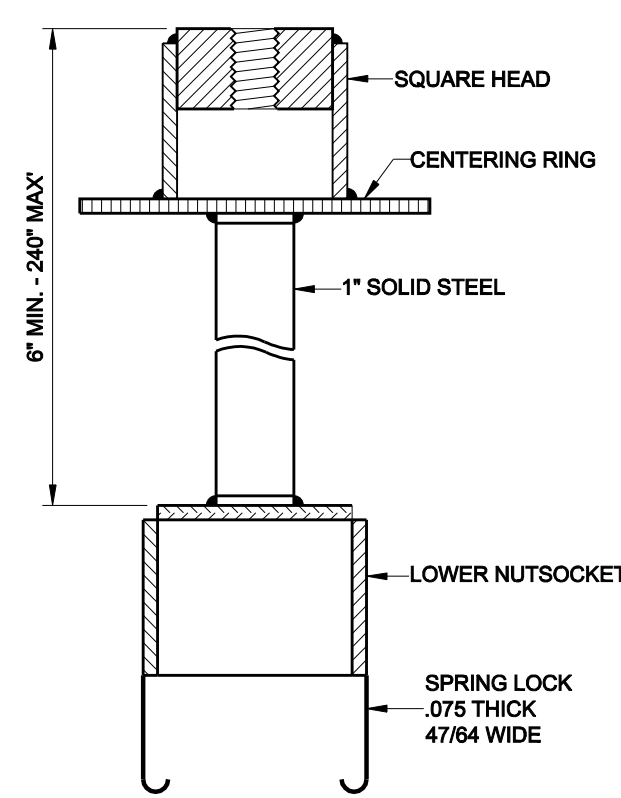


TYPICAL FIRE HYDRANT INSTALLATION

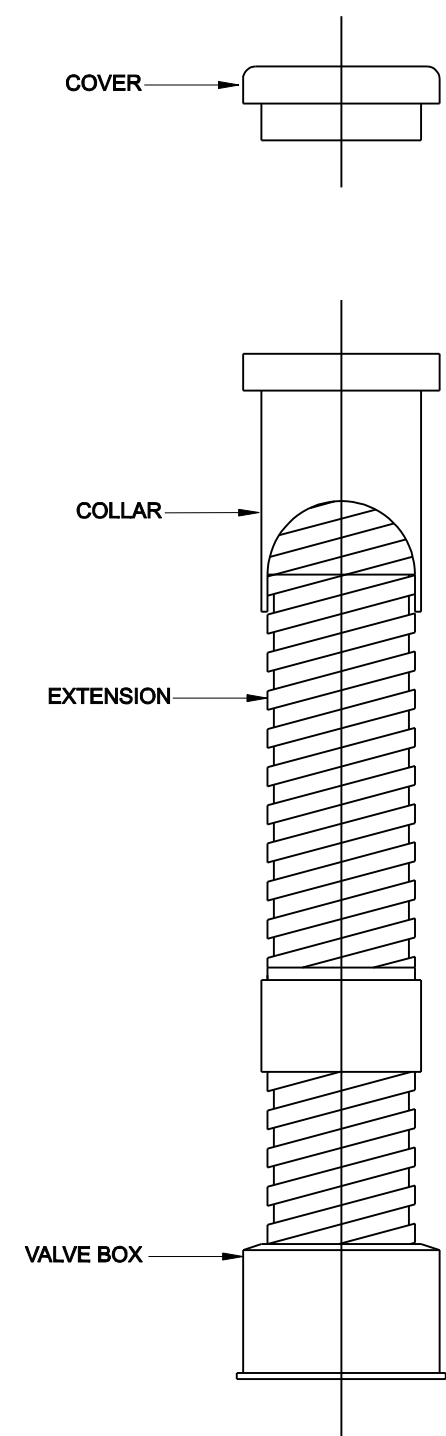


TYPE - B VALVE EXTENSION

NOTE: TO BE USED ON ALL VALVES DEEPER THAN 5'-0\"/>

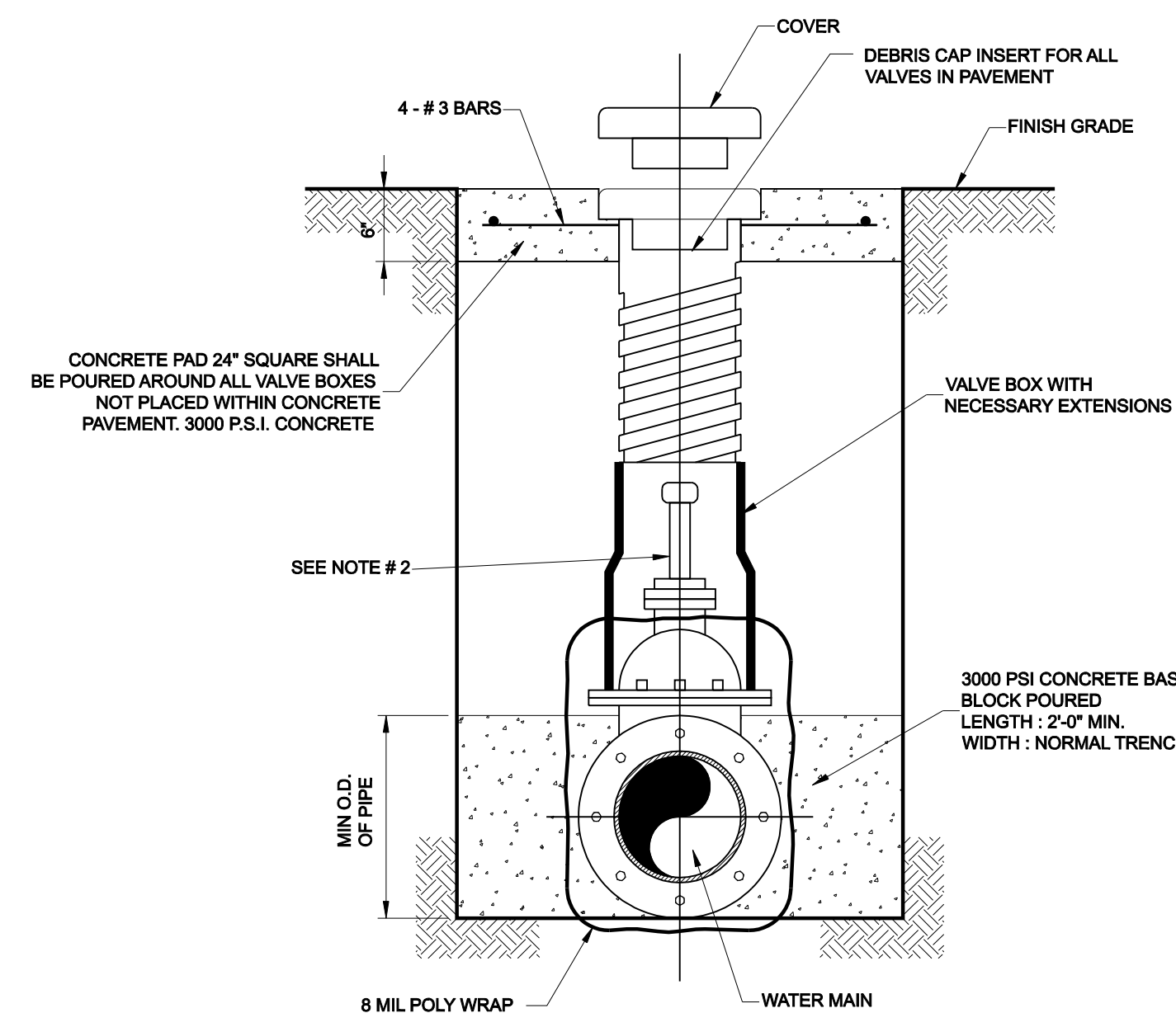


SPRING LOCK VALVE EXTENSION



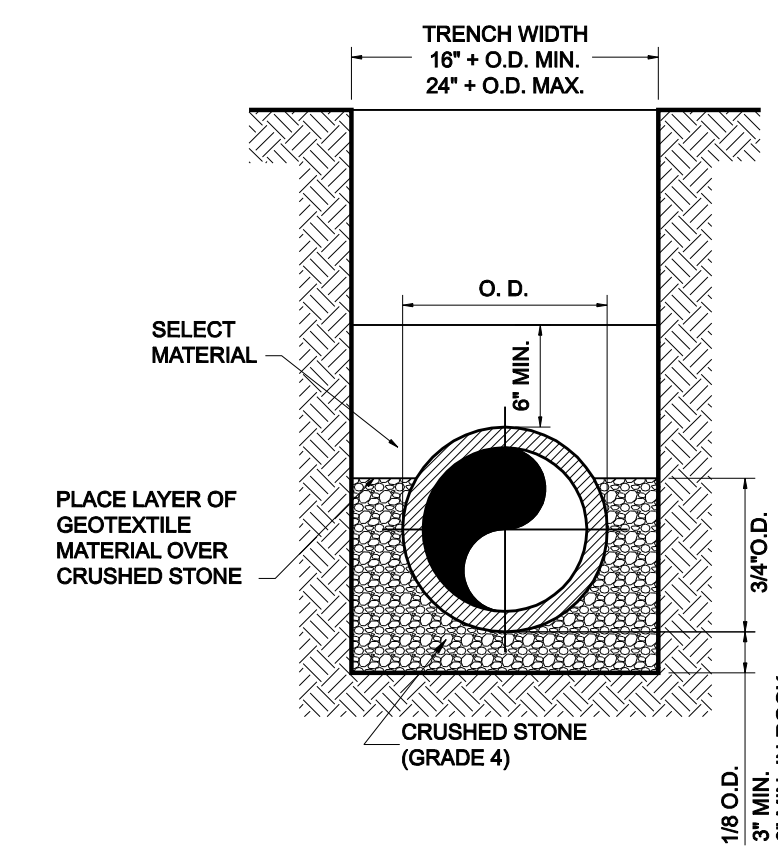
VALVE BOX WITH EXTENSION

ALL CAST IRON FITTINGS SHALL BE DOMESTIC.



TYPICAL VALVE SETTING & BOX

NOTE:
 1. 4\"/>



CLASS \"/>



NO.	REVISION	BY	DATE

Addison TOWN OF ADDISON
DALLAS COUNTY, TEXAS

PAVING, DRAINAGE & UTILITY IMPROVEMENTS
VITRUVIAN WAY EXTENSION

WATER DETAILS

icon Consulting Engineers, Inc. 250 W. Southlake Blvd., Suite 117
Civil Engineers - Designers - Planners Southlake, TX 76092 (817) 552-6210

PROJECT	DESIGN	DRAWN	DATE	FILE	SHEET
5029-01	ICE	ICE	OCT 01 2010	PW# 2010-02	23