

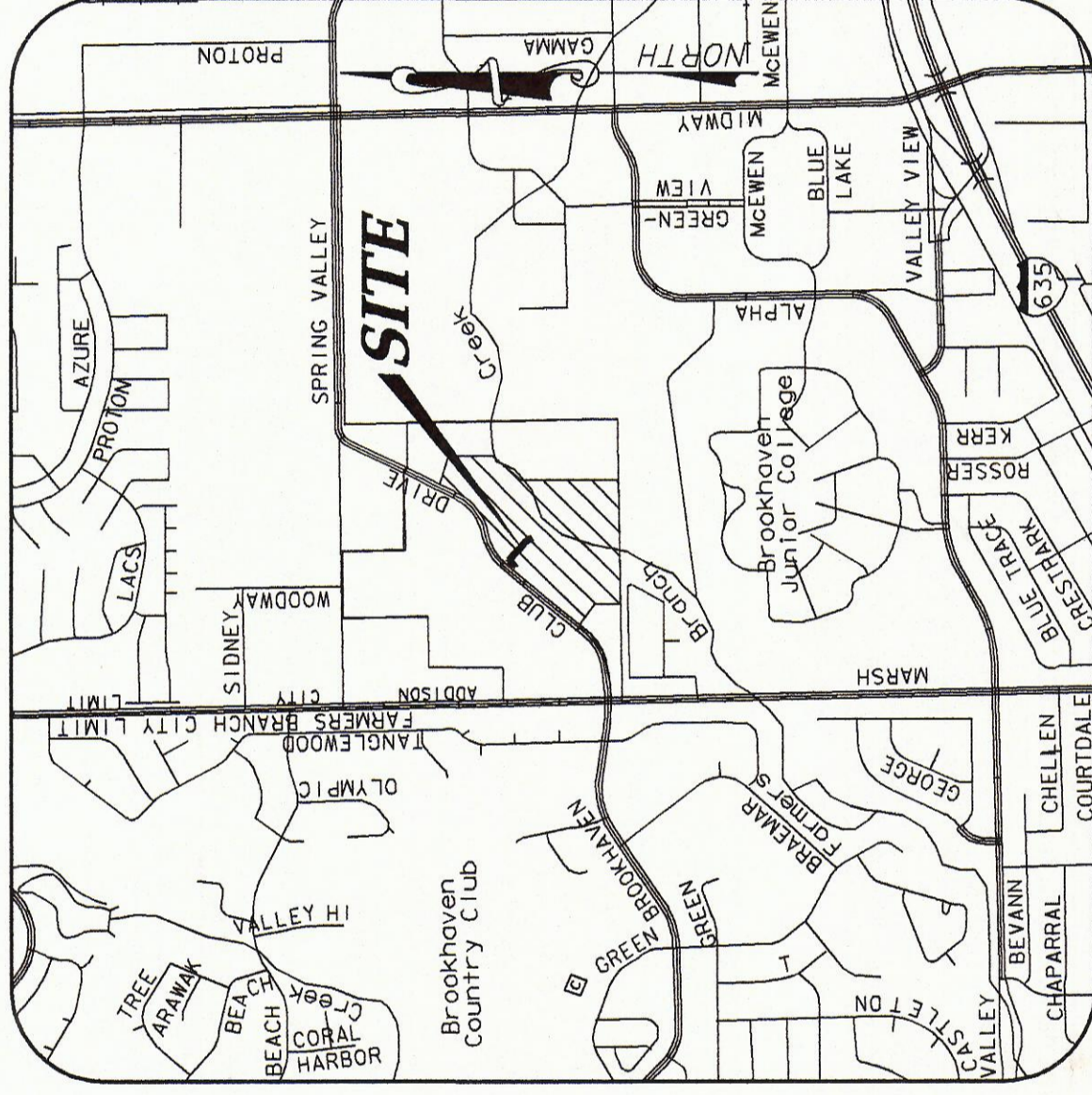
PLANS FOR THE CONSTRUCTION OF
STORM DRAIN RELOCATION
 BROOKHAVEN CLUB DRIVE
 FOR
VITRUVIAN PARK - PHASE 1 - SOUTH
TOWN OF ADDISON, TEXAS

PUBLIC WORKS # 2007-001

OWNER/DEVELOPER:
 UDR
 THREE LINCOLN CENTRE
 5430 LBJ FREEWAY, SUITE 1250
 DALLAS, TEXAS 75240
 PH: (972) 763-3510
 FAX: (972) 866-0163
 CONTACT: MATT BRENDEL

CIVIL ENGINEER:
 ICON CONSULTING ENGINEERS, INC.
 250 W. SOUTHLAKE BLVD., SUITE 117
 SOUTHLAKE, TEXAS 76092
 PH: (817) 552-6210
 FAX: (817) 552-3126
 CONTACT: BRUCE F. DUNNE, P.E.

SURVEYOR:
 LANE'S SOUTHWEST SURVEYING, INC.
 2717 MOTLEY DRIVE, SUITE 'B'
 MESQUITE, TEXAS 95150
 PH: (972) 681-4442
 FAX: (972) 681-4829
 CONTACT: JIM LANE



VICINITY MAP

NOT TO SCALE
 (MAPSCO GRID T3 & T4)

icon Consulting Engineers, Inc.
 Civil Engineers - Designers - Planners

MAY, 2008

| SHEET NO. | DESCRIPTION |
|-----------|---|
| 1 | COVER SHEET |
| 2 | GENERAL CONSTRUCTION NOTES, LEGENDS & ABBREVIATIONS |
| 3 | DRAINAGE AREA MAP & DRAINAGE CALCULATIONS |
| 4 | STORM DRAIN PLAN & PROFILE - LINE B1 |
| 5 | STORM DRAIN DETAILS |
| 6 | GRADING AND EROSION & SEDIMENT CONTROL PLAN & DETAILS |

APPROVED FOR
 CONSTRUCTION
 Town of Addison
 Public Works Department
 APPROVED BY: CLAY BARRETT
 DATE: 5-20-08

All responsibility for the adequacy of these plans remains with the Engineer who prepared them. In approving these plans, the Town of Addison makes no representation of adequacy of the work of the Design Engineer.



LEGEND

| EXISTING | PROPOSED | FUTURE |
|----------------------------|------------|--------|
| PROPERTY LINE | --- | --- |
| BUILDING | ▬ | ▬ |
| FINISH FLOOR ELEVATION | FFE=650.00 | N/A |
| SPOT ELEVATION | 650.00 | N/A |
| CURB | ▬ | ▬ |
| ASPHALT PAVEMENT | ▬ | ▬ |
| RIDGE LINE | RL | N/A |
| SINKLE or VALLEY GUTTER | ▬ | N/A |
| CONTOUR LINE | 675, 21.50 | N/A |
| STORM DRAIN | ▬ | N/A |
| STORM DRAIN MANHOLE | ▬ | N/A |
| CURB INLET | ▬ | N/A |
| RECESSED CURB INLET | ▬ | N/A |
| GRADE INLET | ▬ | N/A |
| WATER LINE | ▬ | N/A |
| FIRE HYDRANT | ▬ | N/A |
| WATER VALVE | ▬ | N/A |
| WATER METER BOX | ▬ | N/A |
| IRRIGATION METER | ▬ | N/A |
| SANITARY SEWER LINE | ▬ | N/A |
| SANITARY SEWER MANHOLE | ▬ | N/A |
| CLEANOUT | ▬ | N/A |
| LIGHT POLE | ▬ | N/A |
| POWER POLE | ▬ | N/A |
| DOWM GUY | ▬ | N/A |
| SIGN | ▬ | N/A |
| ACCESSIBLE PARKING | ▬ | N/A |
| RETAINING WALL | ▬ | N/A |
| WOOD FENCE | ▬ | N/A |
| SCREEN WALL FENCE | ▬ | N/A |
| CHAIN LINK FENCE | ▬ | N/A |
| WIRE FENCE | ▬ | N/A |
| TREE | ▬ | N/A |
| OVERHEAD WIRES | ▬ | N/A |
| OVERHEAD ELECTRIC LINE | ▬ | N/A |
| OVERHEAD TELEPHONE LINE | ▬ | N/A |
| UNDERGROUND ELECTRIC LINE | ▬ | N/A |
| UNDERGROUND TELEPHONE LINE | ▬ | N/A |
| UNDERGROUND CABLE LINE | ▬ | N/A |
| ELECTRIC METER | ▬ | N/A |
| ELECTRIC TRANSFORMER | ▬ | N/A |
| GAS METER | ▬ | N/A |
| GAS LINE | ▬ | N/A |
| AIR CONDITIONING UNIT | ▬ | N/A |

ABBREVIATIONS

| APPROXIMATELY | FW | FW | CEWER | ON CENTER EACH WAY |
|--------------------------|-------|-------|---------------------|---|
| ASPHALT | G | ASPH | R | OVERHEAD ELECTRIC |
| BACK OF CURB | GM | BC | RI | RADIUS |
| BACK TO BACK OF CURB | GM | B-B | RCI | REINFORCED CONCRETE BOX |
| BENCHMARK | BM | BN | RCP | RECESSED CURB INLET |
| BOTTOM OF WALL | BM | BN | RCCP | HIGH DENSITY POLYETHYLENE PIPE |
| CABLE TV | CA TV | CA TV | REINFORCED CONCRETE | REINFORCED CONCRETE PIPE |
| CUBIC FEET PER SECOND | CFS | CFS | REINFORCED | CIRCUMFERENTIAL PIPE |
| CURB INLET | CI | CI | RL | HORIZONTAL |
| CURB INLET | CI | CI | ROW | HOT MIX ASPHALTIC CONCRETE |
| CLEARANCE | CL | CL | RR | HORIZONTAL |
| CORNER | CO | CO | RT | HEATING, VENTILATION AND AIR CONDITIONING |
| CONCRETE | CONC | CONC | SB | IRRIGATION |
| CONSTRUCT | CONC | CONC | ST | JUNCTION BOX |
| CENTER LINE | CL | CL | SO | SQUARE FEET |
| DOUBLE CLEANOUT | DCO | DCO | SS | STORM DRAIN |
| DIA | DA | DA | SS | SANITARY SEWER |
| DIAMETER | DA | DA | STA | STATION |
| DUCTILE IRON PIPE | DIP | DIP | SY | SQUARE YARD |
| DOMESTIC WATER | DW | DW | T | TELEPHONE |
| ELEVATION | EL | EL | TC | TOP OF CURB |
| ELECTRIC MANHOLE | EMH | EMH | TO | TOP OF GROUND |
| ELECTRIC OF PAVEMENT | EP | EP | TMH | TELEPHONE MANHOLE |
| EXISTING | EX | EX | TOB | TOP OF BANK |
| FACE OF CURB | FC | FC | TOS | TOP OF SLOPE |
| FACE TO FACE OF CURB | F-F | F-F | TP | TOP OF PAVEMENT |
| FINISHED FLOOR ELEVATION | FFE | FFE | TP | TOP OF WALL |
| FIRE HYDRANT | FM | FM | TRC | TYPICAL |
| FORCE MAIN | FM | FM | USE | UNDERGROUND ELECTRIC |
| FIBER OPTICS | FO | FO | W | WATER |
| FINISHED PAD | FP | FP | WP | WATER VALVE |
| FEET PER SECOND | FPS | FPS | WY | WATER VALVE |
| FLOW LINE | FL | FL | | |
| FUTURE | FUT | FUT | | |

GENERAL CONSTRUCTION NOTES

- STANDARDS AND SPECIFICATIONS:** ALL MATERIALS, CONSTRUCTION METHODS, WORKMANSHIP, EQUIPMENT, SERVICES AND TESTING FOR ALL PUBLIC IMPROVEMENTS SHALL BE IN ACCORDANCE WITH THE GOVERNING AUTHORITIES' ORDINANCES, REGULATIONS, REQUIREMENTS, STATUTES, DEPARTMENTAL POLICIES, PROCEDURES, SPECIFICATIONS, AND ALL APPLICABLE FEDERAL, STATE AND LOCAL REGULATIONS. THE CONTRACTOR SHALL BE RESPONSIBLE FOR OBTAINING ALL NECESSARY PERMITS AND APPROVALS FROM THE GOVERNING AUTHORITIES. THE CONTRACTOR SHALL BE RESPONSIBLE FOR OBTAINING ALL NECESSARY PERMITS AND APPROVALS FROM THE GOVERNING AUTHORITIES. THE CONTRACTOR SHALL BE RESPONSIBLE FOR OBTAINING ALL NECESSARY PERMITS AND APPROVALS FROM THE GOVERNING AUTHORITIES.
- CONSTRUCTION OF EXISTING AND BARRICADES:** THE CONTRACTOR SHALL CONFORM WITH THE 2003 TEXAS MANUAL ON UNIFORM TRAFFIC CONTROL DEVICES, AS CURRENTLY AMENDED, TEXAS DEPARTMENT OF HIGHWAYS AND PUBLIC TRANSPORTATION.
- CONSTRUCTION OF EXISTING AND BARRICADES:** THE CONTRACTOR SHALL CONFORM WITH THE 2003 TEXAS MANUAL ON UNIFORM TRAFFIC CONTROL DEVICES, AS CURRENTLY AMENDED, TEXAS DEPARTMENT OF HIGHWAYS AND PUBLIC TRANSPORTATION.
- CONSTRUCTION OF EXISTING AND BARRICADES:** THE CONTRACTOR SHALL CONFORM WITH THE 2003 TEXAS MANUAL ON UNIFORM TRAFFIC CONTROL DEVICES, AS CURRENTLY AMENDED, TEXAS DEPARTMENT OF HIGHWAYS AND PUBLIC TRANSPORTATION.
- CONSTRUCTION OF EXISTING AND BARRICADES:** THE CONTRACTOR SHALL CONFORM WITH THE 2003 TEXAS MANUAL ON UNIFORM TRAFFIC CONTROL DEVICES, AS CURRENTLY AMENDED, TEXAS DEPARTMENT OF HIGHWAYS AND PUBLIC TRANSPORTATION.
- CONSTRUCTION OF EXISTING AND BARRICADES:** THE CONTRACTOR SHALL CONFORM WITH THE 2003 TEXAS MANUAL ON UNIFORM TRAFFIC CONTROL DEVICES, AS CURRENTLY AMENDED, TEXAS DEPARTMENT OF HIGHWAYS AND PUBLIC TRANSPORTATION.
- CONSTRUCTION OF EXISTING AND BARRICADES:** THE CONTRACTOR SHALL CONFORM WITH THE 2003 TEXAS MANUAL ON UNIFORM TRAFFIC CONTROL DEVICES, AS CURRENTLY AMENDED, TEXAS DEPARTMENT OF HIGHWAYS AND PUBLIC TRANSPORTATION.
- CONSTRUCTION OF EXISTING AND BARRICADES:** THE CONTRACTOR SHALL CONFORM WITH THE 2003 TEXAS MANUAL ON UNIFORM TRAFFIC CONTROL DEVICES, AS CURRENTLY AMENDED, TEXAS DEPARTMENT OF HIGHWAYS AND PUBLIC TRANSPORTATION.
- CONSTRUCTION OF EXISTING AND BARRICADES:** THE CONTRACTOR SHALL CONFORM WITH THE 2003 TEXAS MANUAL ON UNIFORM TRAFFIC CONTROL DEVICES, AS CURRENTLY AMENDED, TEXAS DEPARTMENT OF HIGHWAYS AND PUBLIC TRANSPORTATION.
- CONSTRUCTION OF EXISTING AND BARRICADES:** THE CONTRACTOR SHALL CONFORM WITH THE 2003 TEXAS MANUAL ON UNIFORM TRAFFIC CONTROL DEVICES, AS CURRENTLY AMENDED, TEXAS DEPARTMENT OF HIGHWAYS AND PUBLIC TRANSPORTATION.
- CONSTRUCTION OF EXISTING AND BARRICADES:** THE CONTRACTOR SHALL CONFORM WITH THE 2003 TEXAS MANUAL ON UNIFORM TRAFFIC CONTROL DEVICES, AS CURRENTLY AMENDED, TEXAS DEPARTMENT OF HIGHWAYS AND PUBLIC TRANSPORTATION.
- CONSTRUCTION OF EXISTING AND BARRICADES:** THE CONTRACTOR SHALL CONFORM WITH THE 2003 TEXAS MANUAL ON UNIFORM TRAFFIC CONTROL DEVICES, AS CURRENTLY AMENDED, TEXAS DEPARTMENT OF HIGHWAYS AND PUBLIC TRANSPORTATION.
- CONSTRUCTION OF EXISTING AND BARRICADES:** THE CONTRACTOR SHALL CONFORM WITH THE 2003 TEXAS MANUAL ON UNIFORM TRAFFIC CONTROL DEVICES, AS CURRENTLY AMENDED, TEXAS DEPARTMENT OF HIGHWAYS AND PUBLIC TRANSPORTATION.
- CONSTRUCTION OF EXISTING AND BARRICADES:** THE CONTRACTOR SHALL CONFORM WITH THE 2003 TEXAS MANUAL ON UNIFORM TRAFFIC CONTROL DEVICES, AS CURRENTLY AMENDED, TEXAS DEPARTMENT OF HIGHWAYS AND PUBLIC TRANSPORTATION.
- CONSTRUCTION OF EXISTING AND BARRICADES:** THE CONTRACTOR SHALL CONFORM WITH THE 2003 TEXAS MANUAL ON UNIFORM TRAFFIC CONTROL DEVICES, AS CURRENTLY AMENDED, TEXAS DEPARTMENT OF HIGHWAYS AND PUBLIC TRANSPORTATION.

- TRAFFIC CONTROL:** IT SHALL BE THE RESPONSIBILITY OF THE CONTRACTOR TO DEVELOP AND SUBMIT FOR APPROVAL BY THE STATE OF TEXAS GOVERNING AUTHORITIES, A TRAFFIC CONTROL PLAN, PREPARED AND SEALED BY A PROFESSIONAL ENGINEER LICENSED IN THE STATE OF TEXAS. THE CONTRACTOR SHALL BE RESPONSIBLE FOR OBTAINING ALL NECESSARY PERMITS AND APPROVALS FROM THE GOVERNING AUTHORITIES. THE CONTRACTOR SHALL BE RESPONSIBLE FOR OBTAINING ALL NECESSARY PERMITS AND APPROVALS FROM THE GOVERNING AUTHORITIES. THE CONTRACTOR SHALL BE RESPONSIBLE FOR OBTAINING ALL NECESSARY PERMITS AND APPROVALS FROM THE GOVERNING AUTHORITIES.
- CONSTRUCTION OF EXISTING AND BARRICADES:** THE CONTRACTOR SHALL CONFORM WITH THE 2003 TEXAS MANUAL ON UNIFORM TRAFFIC CONTROL DEVICES, AS CURRENTLY AMENDED, TEXAS DEPARTMENT OF HIGHWAYS AND PUBLIC TRANSPORTATION.
- CONSTRUCTION OF EXISTING AND BARRICADES:** THE CONTRACTOR SHALL CONFORM WITH THE 2003 TEXAS MANUAL ON UNIFORM TRAFFIC CONTROL DEVICES, AS CURRENTLY AMENDED, TEXAS DEPARTMENT OF HIGHWAYS AND PUBLIC TRANSPORTATION.
- CONSTRUCTION OF EXISTING AND BARRICADES:** THE CONTRACTOR SHALL CONFORM WITH THE 2003 TEXAS MANUAL ON UNIFORM TRAFFIC CONTROL DEVICES, AS CURRENTLY AMENDED, TEXAS DEPARTMENT OF HIGHWAYS AND PUBLIC TRANSPORTATION.
- CONSTRUCTION OF EXISTING AND BARRICADES:** THE CONTRACTOR SHALL CONFORM WITH THE 2003 TEXAS MANUAL ON UNIFORM TRAFFIC CONTROL DEVICES, AS CURRENTLY AMENDED, TEXAS DEPARTMENT OF HIGHWAYS AND PUBLIC TRANSPORTATION.
- CONSTRUCTION OF EXISTING AND BARRICADES:** THE CONTRACTOR SHALL CONFORM WITH THE 2003 TEXAS MANUAL ON UNIFORM TRAFFIC CONTROL DEVICES, AS CURRENTLY AMENDED, TEXAS DEPARTMENT OF HIGHWAYS AND PUBLIC TRANSPORTATION.
- CONSTRUCTION OF EXISTING AND BARRICADES:** THE CONTRACTOR SHALL CONFORM WITH THE 2003 TEXAS MANUAL ON UNIFORM TRAFFIC CONTROL DEVICES, AS CURRENTLY AMENDED, TEXAS DEPARTMENT OF HIGHWAYS AND PUBLIC TRANSPORTATION.
- CONSTRUCTION OF EXISTING AND BARRICADES:** THE CONTRACTOR SHALL CONFORM WITH THE 2003 TEXAS MANUAL ON UNIFORM TRAFFIC CONTROL DEVICES, AS CURRENTLY AMENDED, TEXAS DEPARTMENT OF HIGHWAYS AND PUBLIC TRANSPORTATION.
- CONSTRUCTION OF EXISTING AND BARRICADES:** THE CONTRACTOR SHALL CONFORM WITH THE 2003 TEXAS MANUAL ON UNIFORM TRAFFIC CONTROL DEVICES, AS CURRENTLY AMENDED, TEXAS DEPARTMENT OF HIGHWAYS AND PUBLIC TRANSPORTATION.
- CONSTRUCTION OF EXISTING AND BARRICADES:** THE CONTRACTOR SHALL CONFORM WITH THE 2003 TEXAS MANUAL ON UNIFORM TRAFFIC CONTROL DEVICES, AS CURRENTLY AMENDED, TEXAS DEPARTMENT OF HIGHWAYS AND PUBLIC TRANSPORTATION.
- CONSTRUCTION OF EXISTING AND BARRICADES:** THE CONTRACTOR SHALL CONFORM WITH THE 2003 TEXAS MANUAL ON UNIFORM TRAFFIC CONTROL DEVICES, AS CURRENTLY AMENDED, TEXAS DEPARTMENT OF HIGHWAYS AND PUBLIC TRANSPORTATION.
- CONSTRUCTION OF EXISTING AND BARRICADES:** THE CONTRACTOR SHALL CONFORM WITH THE 2003 TEXAS MANUAL ON UNIFORM TRAFFIC CONTROL DEVICES, AS CURRENTLY AMENDED, TEXAS DEPARTMENT OF HIGHWAYS AND PUBLIC TRANSPORTATION.
- CONSTRUCTION OF EXISTING AND BARRICADES:** THE CONTRACTOR SHALL CONFORM WITH THE 2003 TEXAS MANUAL ON UNIFORM TRAFFIC CONTROL DEVICES, AS CURRENTLY AMENDED, TEXAS DEPARTMENT OF HIGHWAYS AND PUBLIC TRANSPORTATION.
- CONSTRUCTION OF EXISTING AND BARRICADES:** THE CONTRACTOR SHALL CONFORM WITH THE 2003 TEXAS MANUAL ON UNIFORM TRAFFIC CONTROL DEVICES, AS CURRENTLY AMENDED, TEXAS DEPARTMENT OF HIGHWAYS AND PUBLIC TRANSPORTATION.
- CONSTRUCTION OF EXISTING AND BARRICADES:** THE CONTRACTOR SHALL CONFORM WITH THE 2003 TEXAS MANUAL ON UNIFORM TRAFFIC CONTROL DEVICES, AS CURRENTLY AMENDED, TEXAS DEPARTMENT OF HIGHWAYS AND PUBLIC TRANSPORTATION.

- TRAFFIC CONTROL:** IT SHALL BE THE RESPONSIBILITY OF THE CONTRACTOR TO DEVELOP AND SUBMIT FOR APPROVAL BY THE STATE OF TEXAS GOVERNING AUTHORITIES, A TRAFFIC CONTROL PLAN, PREPARED AND SEALED BY A PROFESSIONAL ENGINEER LICENSED IN THE STATE OF TEXAS. THE CONTRACTOR SHALL BE RESPONSIBLE FOR OBTAINING ALL NECESSARY PERMITS AND APPROVALS FROM THE GOVERNING AUTHORITIES. THE CONTRACTOR SHALL BE RESPONSIBLE FOR OBTAINING ALL NECESSARY PERMITS AND APPROVALS FROM THE GOVERNING AUTHORITIES. THE CONTRACTOR SHALL BE RESPONSIBLE FOR OBTAINING ALL NECESSARY PERMITS AND APPROVALS FROM THE GOVERNING AUTHORITIES.
- CONSTRUCTION OF EXISTING AND BARRICADES:** THE CONTRACTOR SHALL CONFORM WITH THE 2003 TEXAS MANUAL ON UNIFORM TRAFFIC CONTROL DEVICES, AS CURRENTLY AMENDED, TEXAS DEPARTMENT OF HIGHWAYS AND PUBLIC TRANSPORTATION.
- CONSTRUCTION OF EXISTING AND BARRICADES:** THE CONTRACTOR SHALL CONFORM WITH THE 2003 TEXAS MANUAL ON UNIFORM TRAFFIC CONTROL DEVICES, AS CURRENTLY AMENDED, TEXAS DEPARTMENT OF HIGHWAYS AND PUBLIC TRANSPORTATION.
- CONSTRUCTION OF EXISTING AND BARRICADES:** THE CONTRACTOR SHALL CONFORM WITH THE 2003 TEXAS MANUAL ON UNIFORM TRAFFIC CONTROL DEVICES, AS CURRENTLY AMENDED, TEXAS DEPARTMENT OF HIGHWAYS AND PUBLIC TRANSPORTATION.
- CONSTRUCTION OF EXISTING AND BARRICADES:** THE CONTRACTOR SHALL CONFORM WITH THE 2003 TEXAS MANUAL ON UNIFORM TRAFFIC CONTROL DEVICES, AS CURRENTLY AMENDED, TEXAS DEPARTMENT OF HIGHWAYS AND PUBLIC TRANSPORTATION.
- CONSTRUCTION OF EXISTING AND BARRICADES:** THE CONTRACTOR SHALL CONFORM WITH THE 2003 TEXAS MANUAL ON UNIFORM TRAFFIC CONTROL DEVICES, AS CURRENTLY AMENDED, TEXAS DEPARTMENT OF HIGHWAYS AND PUBLIC TRANSPORTATION.
- CONSTRUCTION OF EXISTING AND BARRICADES:** THE CONTRACTOR SHALL CONFORM WITH THE 2003 TEXAS MANUAL ON UNIFORM TRAFFIC CONTROL DEVICES, AS CURRENTLY AMENDED, TEXAS DEPARTMENT OF HIGHWAYS AND PUBLIC TRANSPORTATION.
- CONSTRUCTION OF EXISTING AND BARRICADES:** THE CONTRACTOR SHALL CONFORM WITH THE 2003 TEXAS MANUAL ON UNIFORM TRAFFIC CONTROL DEVICES, AS CURRENTLY AMENDED, TEXAS DEPARTMENT OF HIGHWAYS AND PUBLIC TRANSPORTATION.
- CONSTRUCTION OF EXISTING AND BARRICADES:** THE CONTRACTOR SHALL CONFORM WITH THE 2003 TEXAS MANUAL ON UNIFORM TRAFFIC CONTROL DEVICES, AS CURRENTLY AMENDED, TEXAS DEPARTMENT OF HIGHWAYS AND PUBLIC TRANSPORTATION.
- CONSTRUCTION OF EXISTING AND BARRICADES:** THE CONTRACTOR SHALL CONFORM WITH THE 2003 TEXAS MANUAL ON UNIFORM TRAFFIC CONTROL DEVICES, AS CURRENTLY AMENDED, TEXAS DEPARTMENT OF HIGHWAYS AND PUBLIC TRANSPORTATION.
- CONSTRUCTION OF EXISTING AND BARRICADES:** THE CONTRACTOR SHALL CONFORM WITH THE 2003 TEXAS MANUAL ON UNIFORM TRAFFIC CONTROL DEVICES, AS CURRENTLY AMENDED, TEXAS DEPARTMENT OF HIGHWAYS AND PUBLIC TRANSPORTATION.
- CONSTRUCTION OF EXISTING AND BARRICADES:** THE CONTRACTOR SHALL CONFORM WITH THE 2003 TEXAS MANUAL ON UNIFORM TRAFFIC CONTROL DEVICES, AS CURRENTLY AMENDED, TEXAS DEPARTMENT OF HIGHWAYS AND PUBLIC TRANSPORTATION.
- CONSTRUCTION OF EXISTING AND BARRICADES:** THE CONTRACTOR SHALL CONFORM WITH THE 2003 TEXAS MANUAL ON UNIFORM TRAFFIC CONTROL DEVICES, AS CURRENTLY AMENDED, TEXAS DEPARTMENT OF HIGHWAYS AND PUBLIC TRANSPORTATION.
- CONSTRUCTION OF EXISTING AND BARRICADES:** THE CONTRACTOR SHALL CONFORM WITH THE 2003 TEXAS MANUAL ON UNIFORM TRAFFIC CONTROL DEVICES, AS CURRENTLY AMENDED, TEXAS DEPARTMENT OF HIGHWAYS AND PUBLIC TRANSPORTATION.
- CONSTRUCTION OF EXISTING AND BARRICADES:** THE CONTRACTOR SHALL CONFORM WITH THE 2003 TEXAS MANUAL ON UNIFORM TRAFFIC CONTROL DEVICES, AS CURRENTLY AMENDED, TEXAS DEPARTMENT OF HIGHWAYS AND PUBLIC TRANSPORTATION.

- STANDARDS AND SPECIFICATIONS:** ALL MATERIALS, CONSTRUCTION METHODS, WORKMANSHIP, EQUIPMENT, SERVICES AND TESTING FOR ALL PUBLIC IMPROVEMENTS SHALL BE IN ACCORDANCE WITH THE GOVERNING AUTHORITIES' ORDINANCES, REGULATIONS, REQUIREMENTS, STATUTES, DEPARTMENTAL POLICIES, PROCEDURES, SPECIFICATIONS, AND ALL APPLICABLE FEDERAL, STATE AND LOCAL REGULATIONS. THE CONTRACTOR SHALL BE RESPONSIBLE FOR OBTAINING ALL NECESSARY PERMITS AND APPROVALS FROM THE GOVERNING AUTHORITIES. THE CONTRACTOR SHALL BE RESPONSIBLE FOR OBTAINING ALL NECESSARY PERMITS AND APPROVALS FROM THE GOVERNING AUTHORITIES. THE CONTRACTOR SHALL BE RESPONSIBLE FOR OBTAINING ALL NECESSARY PERMITS AND APPROVALS FROM THE GOVERNING AUTHORITIES.
- CONSTRUCTION OF EXISTING AND BARRICADES:** THE CONTRACTOR SHALL CONFORM WITH THE 2003 TEXAS MANUAL ON UNIFORM TRAFFIC CONTROL DEVICES, AS CURRENTLY AMENDED, TEXAS DEPARTMENT OF HIGHWAYS AND PUBLIC TRANSPORTATION.
- CONSTRUCTION OF EXISTING AND BARRICADES:** THE CONTRACTOR SHALL CONFORM WITH THE 2003 TEXAS MANUAL ON UNIFORM TRAFFIC CONTROL DEVICES, AS CURRENTLY AMENDED, TEXAS DEPARTMENT OF HIGHWAYS AND PUBLIC TRANSPORTATION.
- CONSTRUCTION OF EXISTING AND BARRICADES:** THE CONTRACTOR SHALL CONFORM WITH THE 2003 TEXAS MANUAL ON UNIFORM TRAFFIC CONTROL DEVICES, AS CURRENTLY AMENDED, TEXAS DEPARTMENT OF HIGHWAYS AND PUBLIC TRANSPORTATION.
- CONSTRUCTION OF EXISTING AND BARRICADES:** THE CONTRACTOR SHALL CONFORM WITH THE 2003 TEXAS MANUAL ON UNIFORM TRAFFIC CONTROL DEVICES, AS CURRENTLY AMENDED, TEXAS DEPARTMENT OF HIGHWAYS AND PUBLIC TRANSPORTATION.
- CONSTRUCTION OF EXISTING AND BARRICADES:** THE CONTRACTOR SHALL CONFORM WITH THE 2003 TEXAS MANUAL ON UNIFORM TRAFFIC CONTROL DEVICES, AS CURRENTLY AMENDED, TEXAS DEPARTMENT OF HIGHWAYS AND PUBLIC TRANSPORTATION.
- CONSTRUCTION OF EXISTING AND BARRICADES:** THE CONTRACTOR SHALL CONFORM WITH THE 2003 TEXAS MANUAL ON UNIFORM TRAFFIC CONTROL DEVICES, AS CURRENTLY AMENDED, TEXAS DEPARTMENT OF HIGHWAYS AND PUBLIC TRANSPORTATION.
- CONSTRUCTION OF EXISTING AND BARRICADES:** THE CONTRACTOR SHALL CONFORM WITH THE 2003 TEXAS MANUAL ON UNIFORM TRAFFIC CONTROL DEVICES, AS CURRENTLY AMENDED, TEXAS DEPARTMENT OF HIGHWAYS AND PUBLIC TRANSPORTATION.
- CONSTRUCTION OF EXISTING AND BARRICADES:** THE CONTRACTOR SHALL CONFORM WITH THE 2003 TEXAS MANUAL ON UNIFORM TRAFFIC CONTROL DEVICES, AS CURRENTLY AMENDED, TEXAS DEPARTMENT OF HIGHWAYS AND PUBLIC TRANSPORTATION.
- CONSTRUCTION OF EXISTING AND BARRICADES:** THE CONTRACTOR SHALL CONFORM WITH THE 2003 TEXAS MANUAL ON UNIFORM TRAFFIC CONTROL DEVICES, AS CURRENTLY AMENDED, TEXAS DEPARTMENT OF HIGHWAYS AND PUBLIC TRANSPORTATION.
- CONSTRUCTION OF EXISTING AND BARRICADES:** THE CONTRACTOR SHALL CONFORM WITH THE 2003 TEXAS MANUAL ON UNIFORM TRAFFIC CONTROL DEVICES, AS CURRENTLY AMENDED, TEXAS DEPARTMENT OF HIGHWAYS AND PUBLIC TRANSPORTATION.
- CONSTRUCTION OF EXISTING AND BARRICADES:** THE CONTRACTOR SHALL CONFORM WITH THE 2003 TEXAS MANUAL ON UNIFORM TRAFFIC CONTROL DEVICES, AS CURRENTLY AMENDED, TEXAS DEPARTMENT OF HIGHWAYS AND PUBLIC TRANSPORTATION.
- CONSTRUCTION OF EXISTING AND BARRICADES:** THE CONTRACTOR SHALL CONFORM WITH THE 2003 TEXAS MANUAL ON UNIFORM TRAFFIC CONTROL DEVICES, AS CURRENTLY AMENDED, TEXAS DEPARTMENT OF HIGHWAYS AND PUBLIC TRANSPORTATION.
- CONSTRUCTION OF EXISTING AND BARRICADES:** THE CONTRACTOR SHALL CONFORM WITH THE 2003 TEXAS MANUAL ON UNIFORM TRAFFIC CONTROL DEVICES, AS CURRENTLY AMENDED, TEXAS DEPARTMENT OF HIGHWAYS AND PUBLIC TRANSPORTATION.
- CONSTRUCTION OF EXISTING AND BARRICADES:** THE CONTRACTOR SHALL CONFORM WITH THE 2003 TEXAS MANUAL ON UNIFORM TRAFFIC CONTROL DEVICES, AS CURRENTLY AMENDED, TEXAS DEPARTMENT OF HIGHWAYS AND PUBLIC TRANSPORTATION.

| NO. | REVISION | DATE |
|-----|----------|------|
| | | |
| | | |
| | | |

TOWN OF ADDISON
DALLAS COUNTY, TEXAS

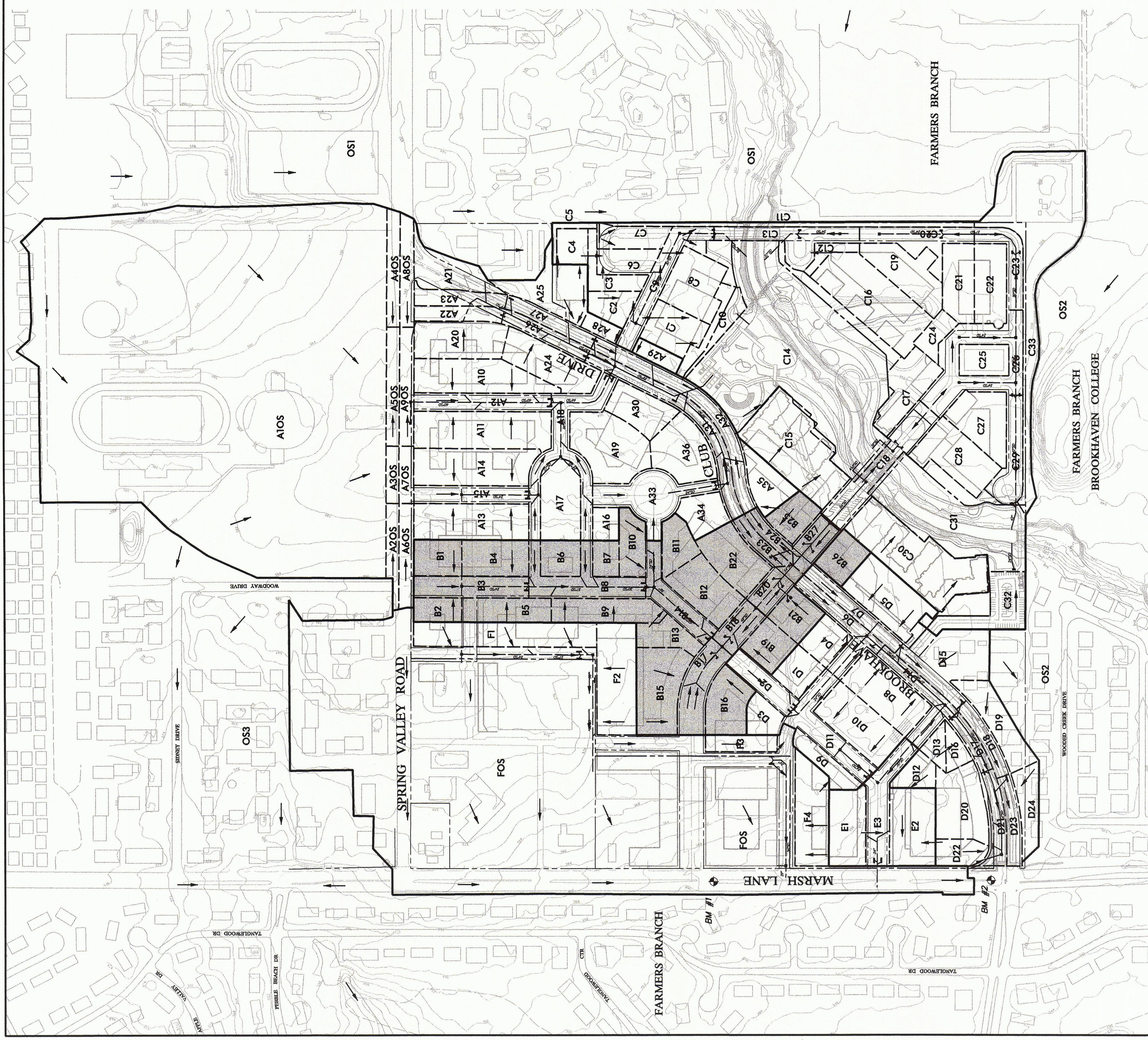
STORM DRAIN RELOCATION
BROOKHAVEN CLUB DRIVE

GENERAL CONSTRUCTION NOTES,
LEGEND & ABBREVIATIONS

icon Consulting Engineers, Inc.
Civil Engineers - Planners
280 W. Southlake Blvd., Suite 117
Southlake, TX 76090 (817) 552-8510

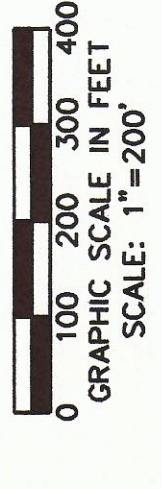
| PROJECT | DESIGN | DRAWN | DATE | FILE | SHEET |
|---------|--------|-------|-------------|---------------|-------|
| 5019-01 | JAM | SAM | MAY 8, 2008 | PW # 2007-001 | 2 |

NO PERSON SHALL WORK WITHIN SIX FEET OF A HIGH VOLTAGE LINE WITHOUT PROTECTION HAVING BEEN TAKEN AS OUTLINED IN PARAGRAPH C. ABOVE.



LEGEND

- A17
- DRAINAGE AREA DESIGNATION
- MAJOR DRAINAGE AREA DIVIDE
- - - MINOR DRAINAGE AREA DIVIDE
- DIRECTION OF FLOW



| DRAINAGE AREA CALCULATIONS - PROPOSED | | | | | | | | | | | | | | | | | |
|---------------------------------------|--------------|---------------|------|----------|------------|------------|------------|-------------|-------------|-------------|-------------|-------------|-------------|--------------|--------------|------------------|--------------------|
| AREA NO. | AREA (acres) | RUNOFF COEFF. | CA | Tc (min) | I2 (in/hr) | O2 (in/hr) | O5 (in/hr) | I10 (in/hr) | O10 (in/hr) | I25 (in/hr) | O25 (in/hr) | I50 (in/hr) | O50 (in/hr) | I100 (in/hr) | O100 (in/hr) | COLLECTION POINT | |
| B1 | 0.60 | 0.90 | 0.54 | 10.0 | 5.2 | 2.8 | 5.9 | 3.2 | 6.5 | 3.5 | 7.4 | 4.0 | 8.2 | 4.4 | 8.9 | 4.8 | Future Storm Drain |
| B2 | 0.40 | 0.90 | 0.36 | 10.0 | 5.2 | 1.9 | 5.9 | 2.1 | 6.5 | 2.3 | 7.4 | 2.7 | 8.2 | 2.9 | 8.9 | 3.2 | Future Storm Drain |
| B3 | 0.80 | 0.95 | 0.76 | 10.0 | 5.2 | 4.0 | 5.9 | 4.5 | 6.5 | 4.9 | 7.4 | 5.7 | 8.2 | 6.2 | 8.9 | 6.7 | Future Storm Drain |
| B4 | 0.80 | 0.90 | 0.72 | 10.0 | 5.2 | 3.8 | 5.9 | 4.2 | 6.5 | 4.7 | 7.4 | 5.4 | 8.2 | 5.9 | 8.9 | 6.4 | Future Storm Drain |
| B5 | 0.70 | 0.90 | 0.63 | 10.0 | 5.2 | 3.3 | 5.9 | 3.7 | 6.5 | 4.1 | 7.4 | 4.7 | 8.2 | 5.1 | 8.9 | 5.6 | Future Storm Drain |
| B6 | 0.50 | 0.40 | 0.20 | 10.0 | 5.2 | 1.0 | 5.9 | 1.2 | 6.5 | 1.3 | 7.4 | 1.5 | 8.2 | 1.6 | 8.9 | 1.8 | Future Storm Drain |
| B7 | 0.30 | 0.90 | 0.27 | 10.0 | 5.2 | 1.4 | 5.9 | 1.6 | 6.5 | 1.8 | 7.4 | 2.0 | 8.2 | 2.2 | 8.9 | 2.4 | Future Storm Drain |
| B8 | 1.20 | 0.95 | 1.14 | 10.0 | 5.2 | 6.0 | 5.9 | 6.7 | 6.5 | 7.4 | 7.4 | 8.5 | 8.2 | 8.3 | 8.9 | 10.1 | Future Storm Drain |
| B9 | 0.90 | 0.90 | 0.81 | 10.0 | 5.2 | 4.2 | 5.9 | 4.8 | 6.5 | 7.4 | 6.0 | 8.2 | 6.6 | 8.9 | 7.2 | 8.9 | Future Storm Drain |
| B10 | 0.60 | 0.90 | 0.54 | 10.0 | 5.2 | 2.8 | 5.9 | 3.2 | 6.5 | 3.5 | 7.4 | 4.0 | 8.2 | 4.4 | 8.9 | 4.8 | Future Storm Drain |
| B11 | 1.00 | 0.90 | 0.90 | 10.0 | 5.2 | 4.4 | 5.9 | 5.0 | 6.5 | 6.8 | 7.4 | 8.2 | 8.2 | 8.9 | 9.6 | 10.4 | Future Storm Drain |
| B12 | 1.00 | 0.90 | 0.90 | 10.0 | 5.2 | 4.4 | 5.9 | 5.0 | 6.5 | 6.8 | 7.4 | 8.2 | 8.2 | 8.9 | 9.6 | 10.4 | Future Storm Drain |
| B13 | 0.50 | 0.90 | 0.45 | 10.0 | 5.2 | 2.4 | 5.9 | 2.8 | 6.5 | 2.9 | 7.4 | 3.3 | 8.2 | 3.7 | 8.9 | 4.0 | Future Storm Drain |
| B14 | 0.80 | 0.95 | 0.76 | 10.0 | 5.2 | 4.0 | 5.9 | 4.5 | 6.5 | 4.9 | 7.4 | 5.7 | 8.2 | 8.9 | 6.7 | 8.9 | Future Storm Drain |
| B15 | 1.30 | 0.90 | 1.17 | 10.0 | 5.2 | 6.1 | 5.9 | 6.9 | 6.5 | 7.6 | 7.4 | 8.7 | 8.2 | 8.5 | 8.9 | 10.4 | Future Storm Drain |
| B16 | 0.80 | 0.90 | 0.72 | 10.0 | 5.2 | 3.8 | 5.9 | 4.2 | 6.5 | 4.7 | 7.4 | 5.4 | 8.2 | 5.9 | 8.9 | 6.4 | Future Storm Drain |
| B17 | 0.80 | 0.95 | 0.85 | 10.0 | 5.2 | 4.5 | 5.9 | 5.0 | 6.5 | 5.5 | 7.4 | 6.4 | 8.2 | 7.0 | 8.9 | 7.6 | Future Storm Drain |
| B18 | 0.50 | 0.95 | 0.48 | 10.0 | 5.2 | 2.5 | 5.9 | 2.8 | 6.5 | 3.1 | 7.4 | 3.5 | 8.2 | 3.9 | 8.9 | 4.2 | Future Storm Drain |
| B19 | 0.80 | 0.90 | 0.72 | 10.0 | 5.2 | 3.8 | 5.9 | 4.2 | 6.5 | 4.7 | 7.4 | 5.4 | 8.2 | 5.9 | 8.9 | 6.4 | Future Storm Drain |
| B20 | 0.50 | 0.95 | 0.48 | 10.0 | 5.2 | 2.5 | 5.9 | 2.8 | 6.5 | 3.1 | 7.4 | 3.5 | 8.2 | 3.9 | 8.9 | 4.2 | Future Storm Drain |
| B21 | 0.60 | 0.90 | 0.54 | 10.0 | 5.2 | 2.8 | 5.9 | 3.2 | 6.5 | 3.5 | 7.4 | 4.0 | 8.2 | 4.4 | 8.9 | 4.8 | Future Storm Drain |
| B22 | 0.90 | 0.90 | 0.81 | 10.0 | 5.2 | 4.2 | 5.9 | 4.8 | 6.5 | 7.4 | 6.0 | 8.2 | 6.6 | 8.9 | 7.2 | 8.9 | Future Storm Drain |
| B23 | 0.30 | 0.95 | 0.28 | 10.0 | 5.2 | 1.5 | 5.9 | 1.7 | 6.5 | 1.8 | 7.4 | 2.1 | 8.2 | 2.3 | 8.9 | 2.5 | Future Storm Drain |
| B24 | 0.50 | 0.90 | 0.45 | 10.0 | 5.2 | 2.4 | 5.9 | 2.8 | 6.5 | 2.9 | 7.4 | 3.3 | 8.2 | 3.7 | 8.9 | 4.0 | Future Storm Drain |
| B25 | 0.50 | 0.90 | 0.45 | 10.0 | 5.2 | 2.4 | 5.9 | 2.8 | 6.5 | 2.9 | 7.4 | 3.3 | 8.2 | 3.7 | 8.9 | 4.0 | Future Storm Drain |
| B26 | 0.50 | 0.90 | 0.45 | 10.0 | 5.2 | 2.4 | 5.9 | 2.8 | 6.5 | 2.9 | 7.4 | 3.3 | 8.2 | 3.7 | 8.9 | 4.0 | Future Storm Drain |
| B27 | 0.50 | 0.95 | 0.48 | 10.0 | 5.2 | 2.5 | 5.9 | 2.8 | 6.5 | 3.1 | 7.4 | 3.5 | 8.2 | 3.9 | 8.9 | 4.2 | Future Storm Drain |
| B28 | 17.8 | | | | | 84.0 | | | | | 94.4 | | | | 131.0 | 142.6 | |
| | | | | | | | | | | | 119.5 | | | | | | |

■ DENOTES AREA CONTRIBUTING TO PROPOSED STORM DRAIN RELOCATION

WARNING
 CONTRACTOR IS TO CONTACT TEXAS ONE-CALL SYSTEM (1-800-245-4545) OR OTHER UTILITY LOCATING SERVICE PRIOR TO ANY CONSTRUCTION ACTIVITIES. ICON CONSULTING ENGINEERS, INC. IS NOT RESPONSIBLE FOR KNOWING ALL EXISTING UTILITIES IN THE PROJECT AREA NOR FOR THE ACCURACY OF THE EXACT LOCATIONS OF UTILITIES ON THESE DRAWINGS.

BM #1 REF. ELEVATION = 559.47
 SQUARE CUT IN TOP OF CURB, SOUTH MEDIAN END NOSE, MARSH LANE
 1127 NORTH OF BROOKHAVEN CLUB DRIVE.

BM #2 REF. ELEVATION = 547.84
 SQUARE CUT IN TOP OF CURB, NORTH MEDIAN END NOSE, AT INTERSECTION OF BROOKHAVEN CLUB DRIVE AND MARSH LANE.



| | | | |
|-----|----------|----|------|
| NO. | REVISION | BY | DATE |
| | | | |

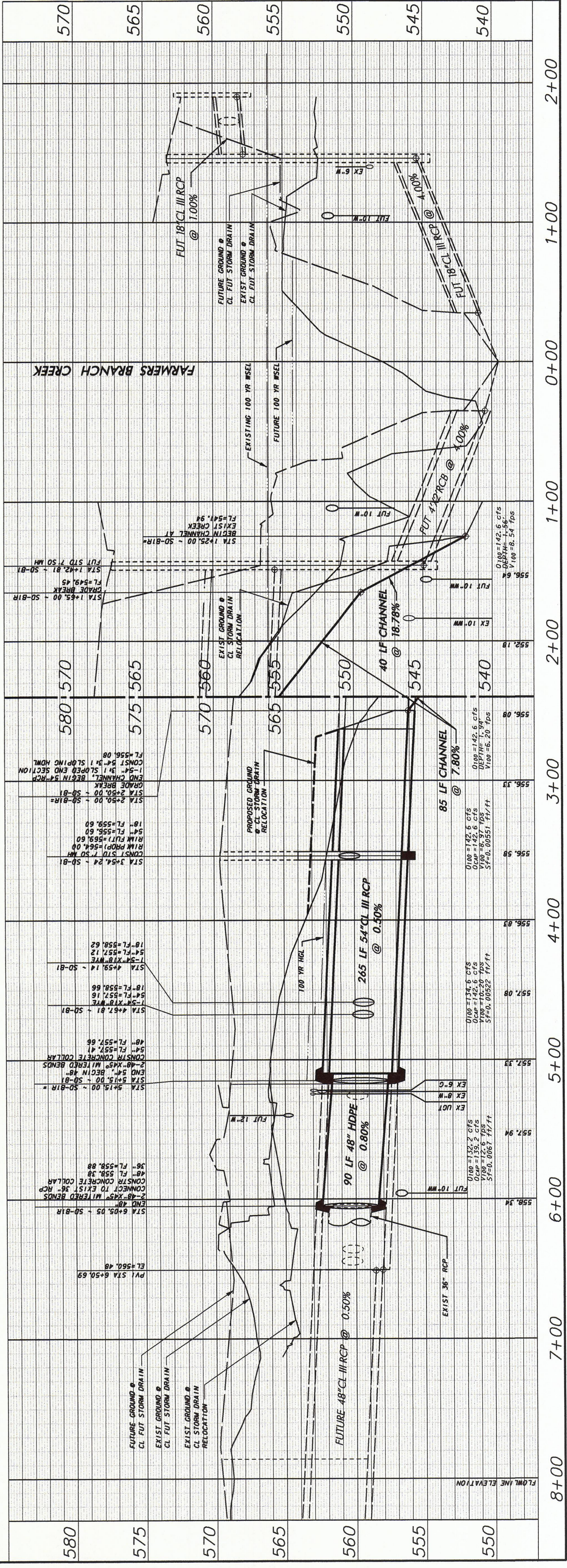
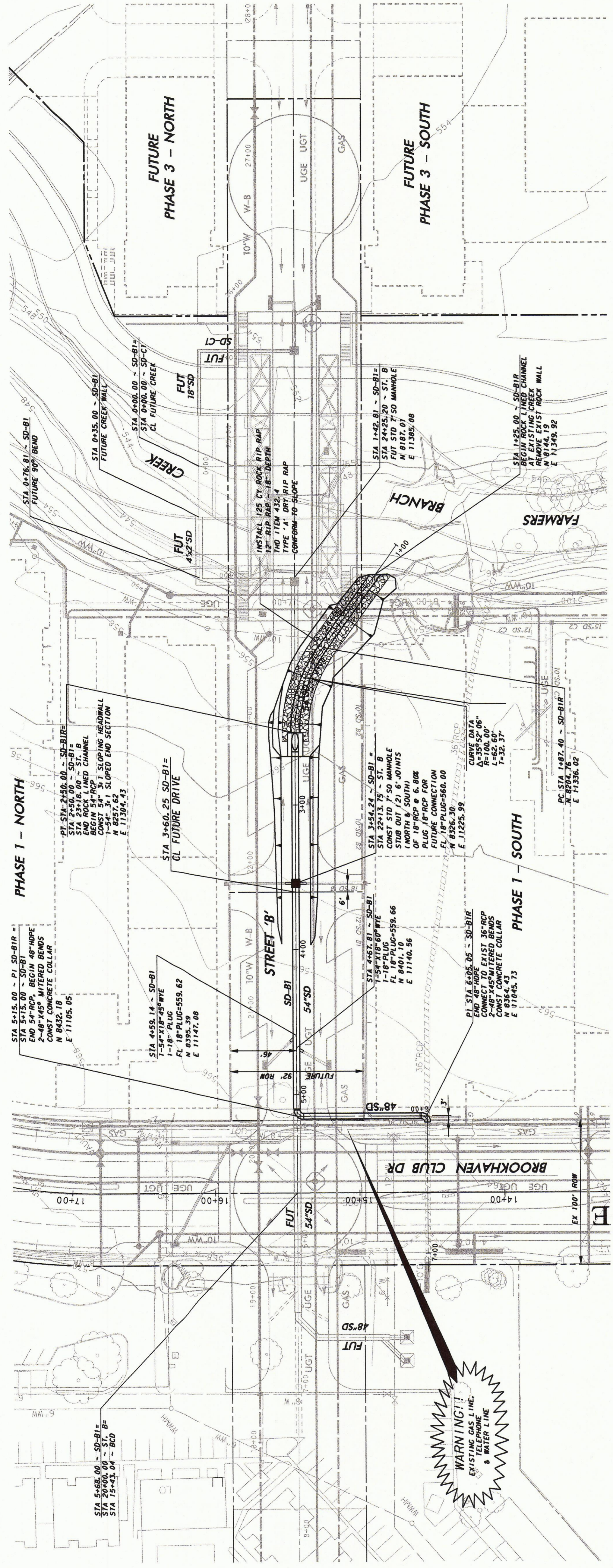
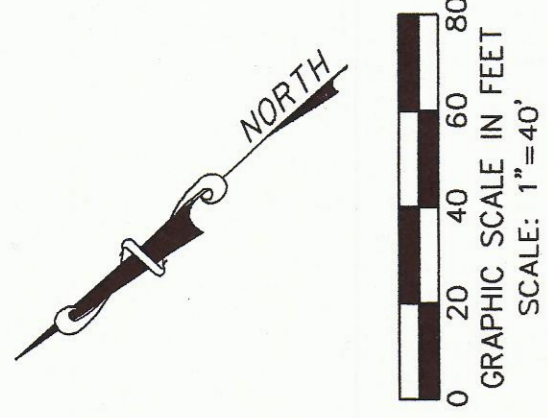
TOWN OF ADDISON
 DALLAS COUNTY, TEXAS

STORM DRAIN RELOCATION
 BROOKHAVEN CLUB DRIVE

DRAINAGE AREA MAP &
 DRAINAGE CALCULATIONS

Consulting Engineers, Inc.
 Civil Engineers - Designers - Planners
 250 W. Southlake Blvd., Suite 117
 Southlake, TX 76092 (817) 552-8210

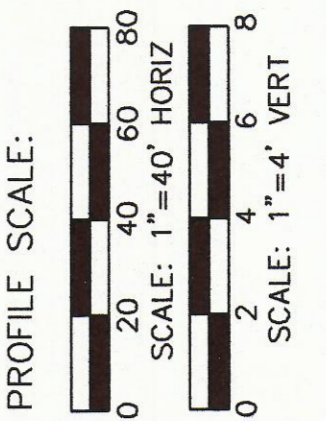
| | | | | | |
|---------|--------|-------|-------------|---------------|-------|
| PROJECT | DESIGN | DRAWN | DATE | FILE | SHEET |
| 5019-01 | JAM | SAM | MAY 8, 2008 | PW # 2007-001 | 3 |



WARNING
 CONTRACTOR IS TO CONTACT TEXAS ONE-CALL SYSTEM (1-800-245-6445) OR OTHER UTILITY LOCATING SERVICES AT LEAST 48 HOURS PRIOR TO ANY EXCAVATION. TEXAS ONE-CALL ENGINEERS, INC. IS NOT RESPONSIBLE FOR KNOWING ALL EXISTING UTILITIES IN THE PROJECT AREA NOR FOR DETECTING THE EXACT LOCATIONS OF UTILITIES ON THESE DRAWINGS.

BM #1 REF. ELEVATION = 559.47
 SQUARE CUT IN TOP OF CURB, SOUTH MEDIAN END NOSE, MARSH LAKE 1127 NORTH OF BROOKHAVEN CLUB DRIVE.

BM #2 REF. ELEVATION = 547.84
 SQUARE CUT IN TOP OF CURB, SOUTH MEDIAN END NOSE, AT INTERSECTION OF BROOKHAVEN CLUB DRIVE AND MARSH LAKE.



PROFILE SCALE:
 0 20 40 60 80
 SCALE: 1"=40' HORIZ
 0 2 4 6 8
 SCALE: 1"=4' VERT

| | | | |
|-----|----------|----|------|
| NO. | REVISION | BY | DATE |
| | | | |

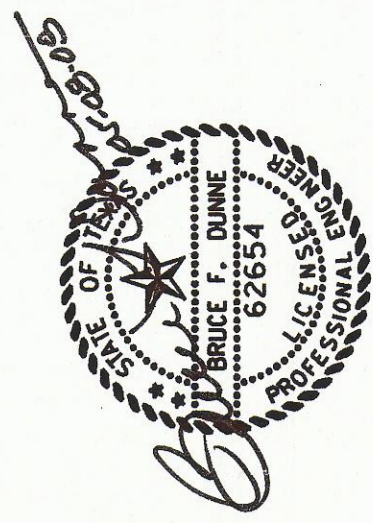
TOWN OF ADDISON
 DALLAS COUNTY, TEXAS

STORM DRAIN RELOCATION
 BROOKHAVEN CLUB DRIVE

STORM DRAIN PLAN & PROFILE-LINE B1
 STA 0+00.00 - 6+50.69

icon Consulting Engineers, Inc.
 250 W. Southlake Blvd., Suite 117
 Southlake, TX 75082 (817) 562-6210
 Civil Engineers - Designers - Planners

| | | | | | |
|---------|--------|-------|-------------|---------------|-------|
| PROJECT | DESIGN | DRAWN | DATE | FILE | SHEET |
| 5019-01 | JAM | SAM | MAY 8, 2008 | PW # 2007-001 | 4 |



| | | | |
|-----|----------|----|------|
| NO. | REVISION | BY | DATE |
| | | | |
| | | | |
| | | | |

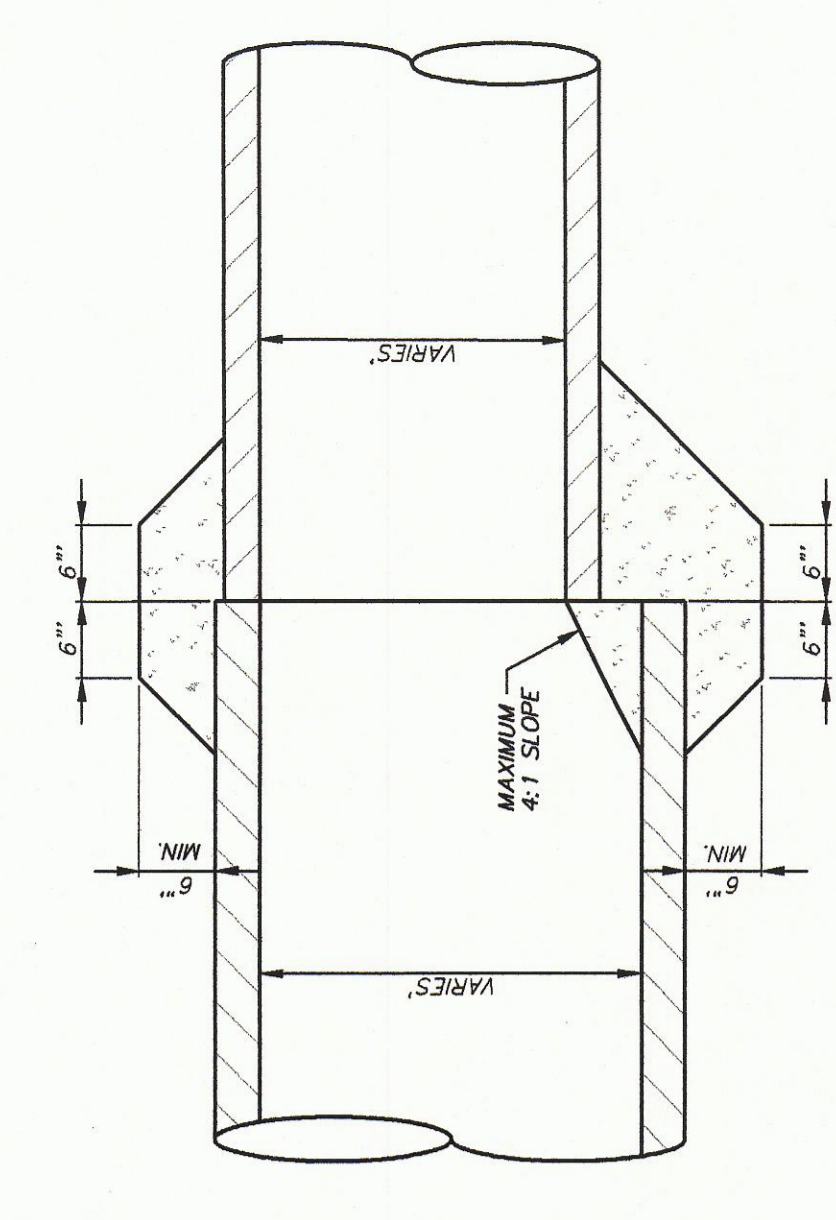
TOWN OF ADDISON
DALLAS COUNTY, TEXAS

STORM DRAIN RELOCATION
BROOKHAVEN CLUB DRIVE

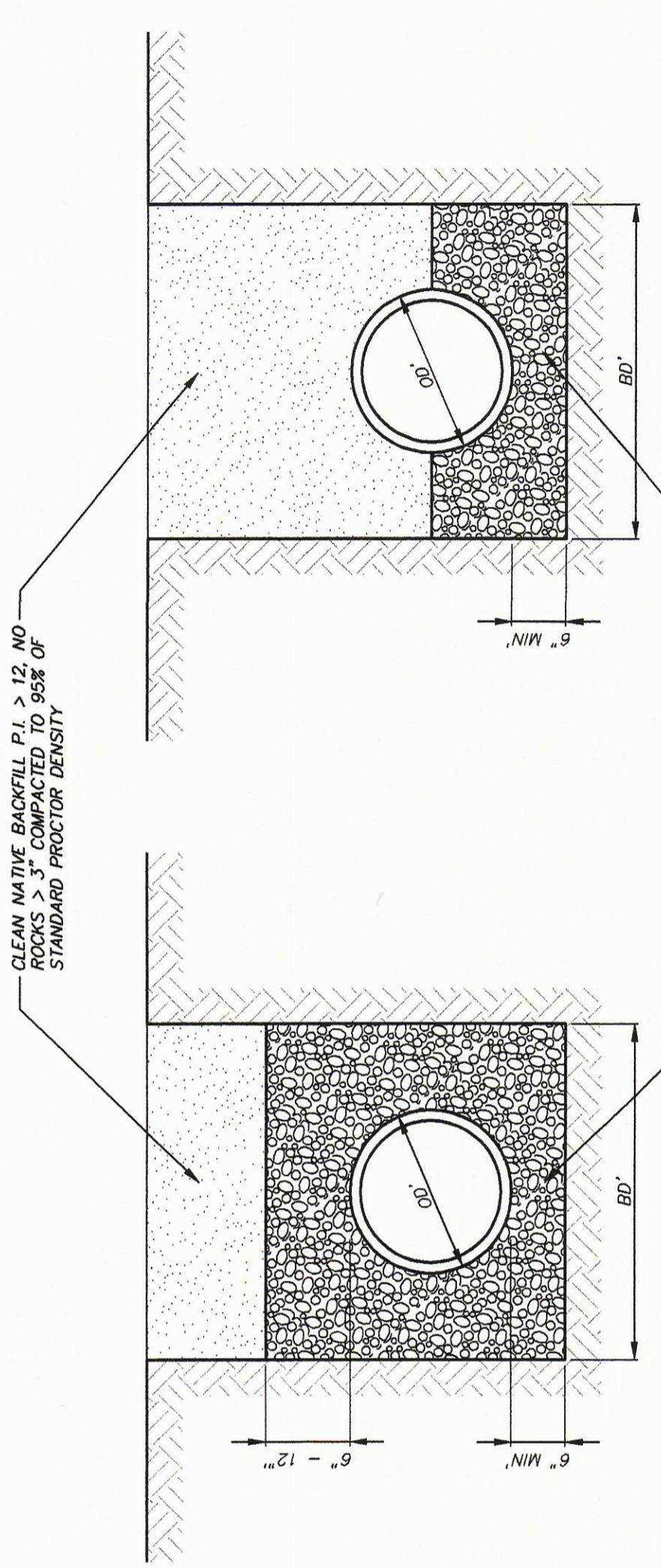
STORM DRAIN DETAILS

Consulting Engineers, Inc.
250 W. Southlake Blvd., Suite 117
Southlake, TX 76092 (817) 552-6210
Civil Engineers - Designers - Planners

| | | | | | |
|---------|--------|-------|-------------|---------------|-------|
| PROJECT | DESIGN | DRAWN | DATE | FILE | SHEET |
| 5019-01 | JAM | SAM | MAY 8, 2008 | PW # 2007-001 | 5 |

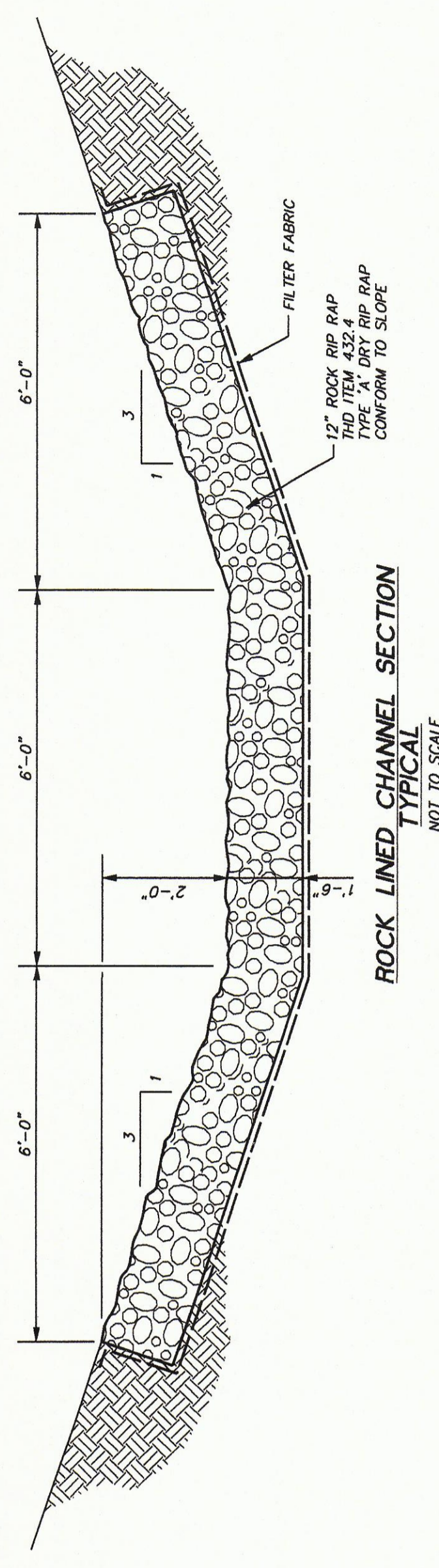


CONCRETE COLLAR
NOT TO SCALE

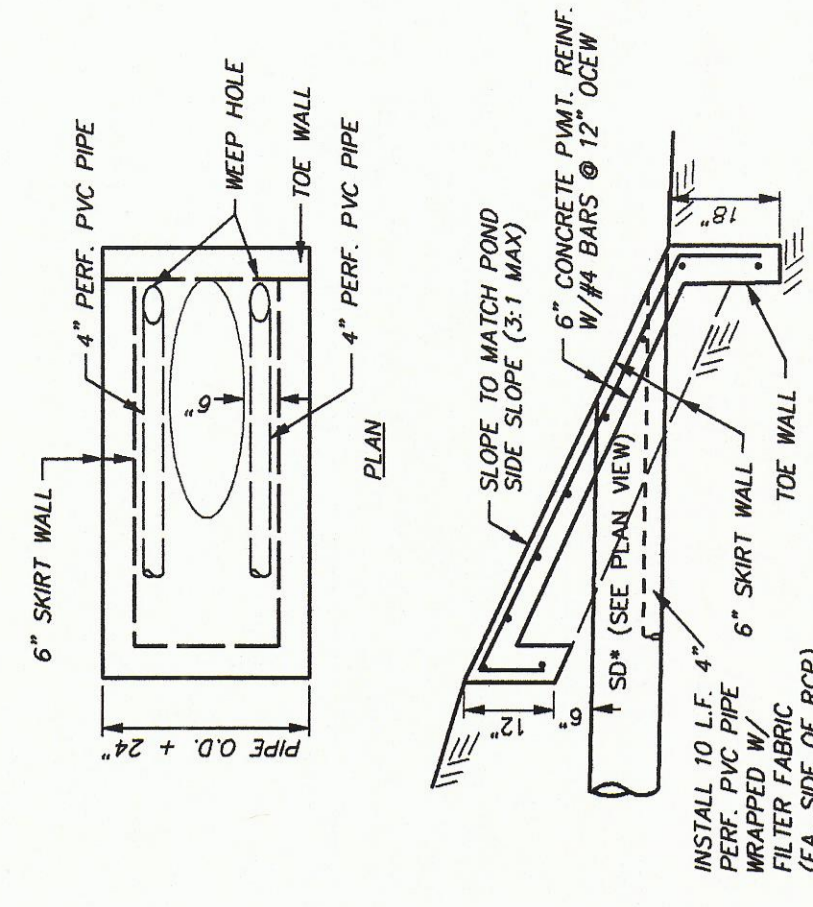


REINFORCED CONCRETE PIPE
24" MINIMUM COVER
(FOR PRIVATE OR PUBLIC USE)

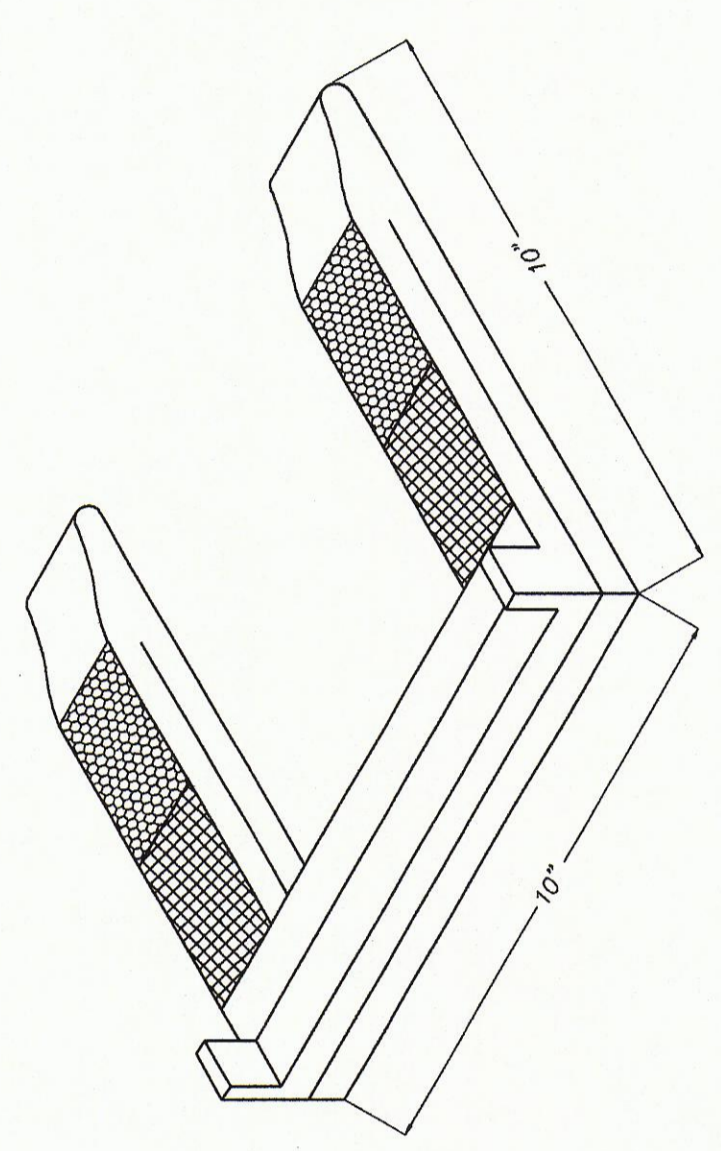
STORM DRAIN EMBEDMENT
NOT TO SCALE



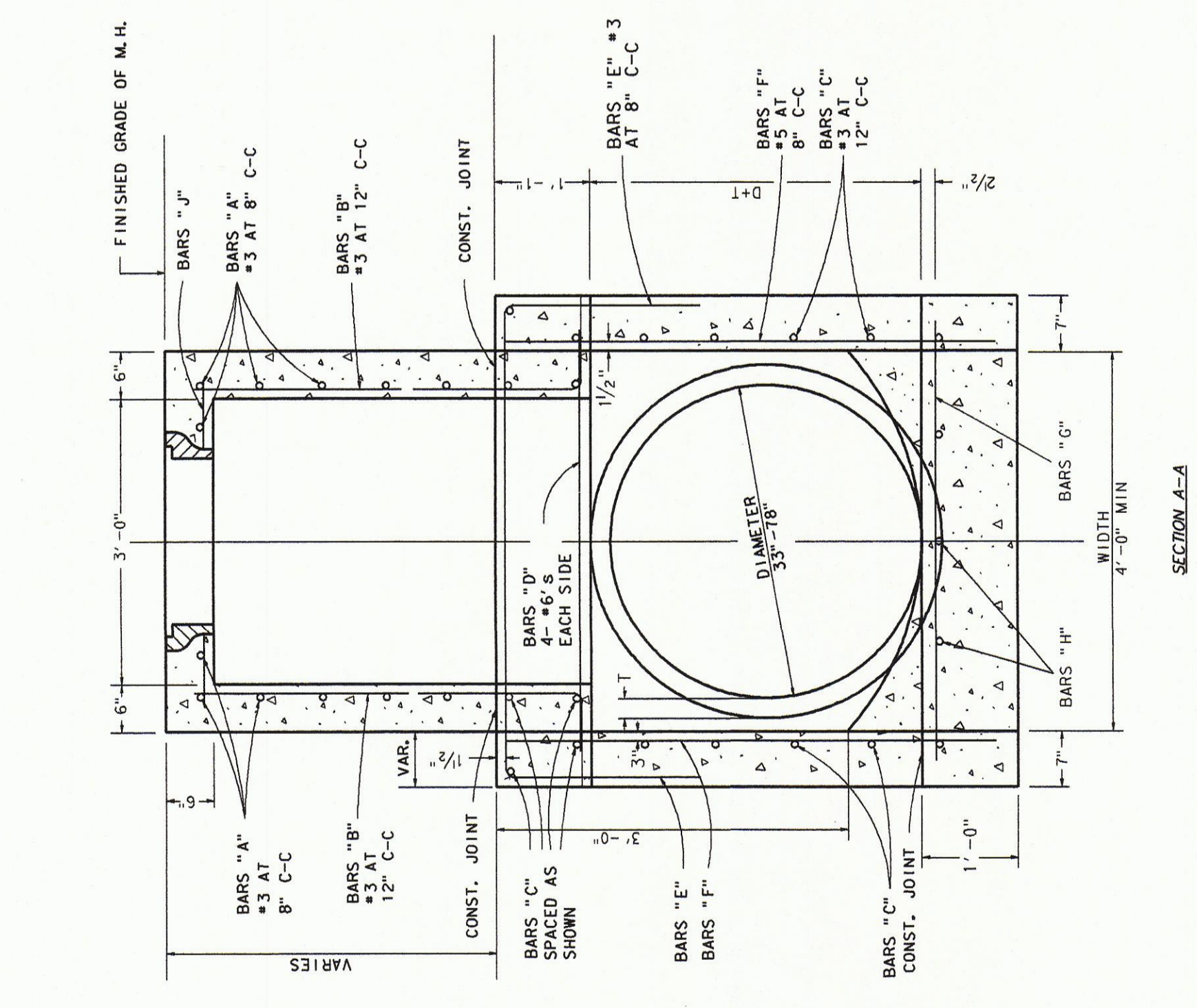
ROCK LINED CHANNEL SECTION
TYPICAL
NOT TO SCALE



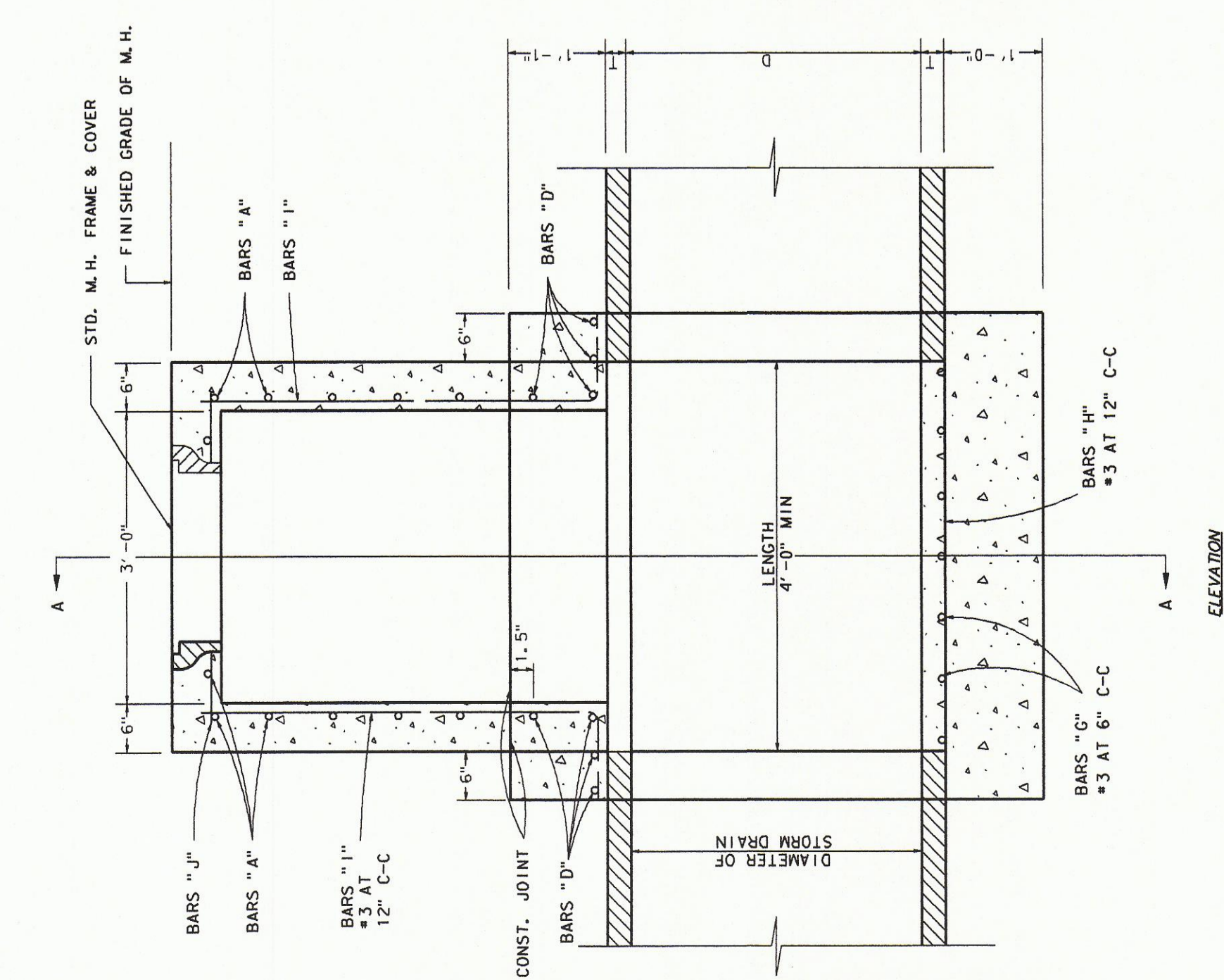
SLOPED HEADWALL
NOT TO SCALE



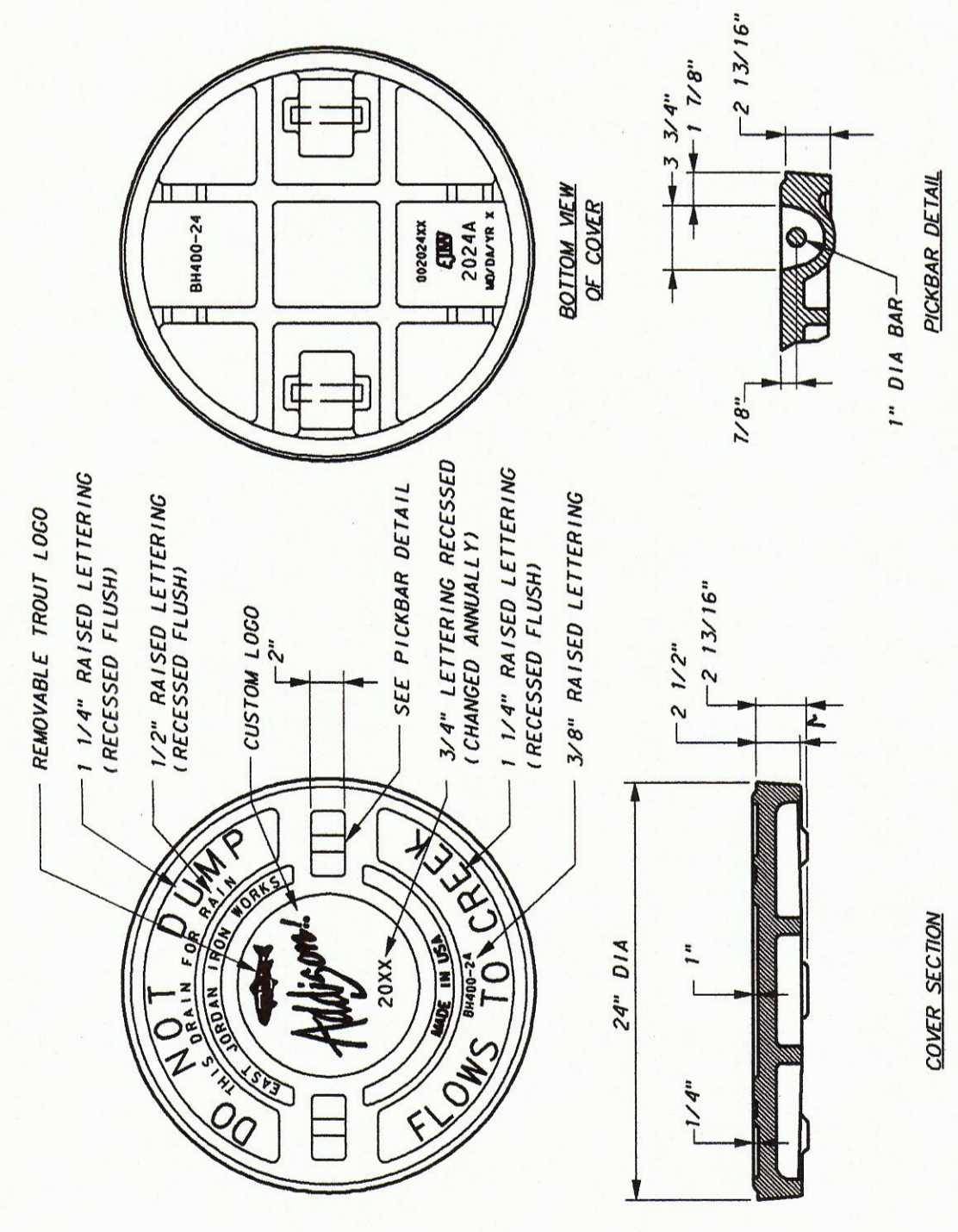
MANHOLE STEP DETAIL
NEOPRENE COATED STEEL OR EQUAL



TYPE B STORM DRAIN MANHOLE
(FOR PIPE 33" TO 78" IN DIAMETER)



TYPE A & TYPE B
STORM DRAIN MANHOLE
NOTE: MAX PIPE SIZE 78"



- NOTES APPLICABLE TO ALL MANHOLES
1. PREFABRICATED MANHOLES OF EQUIVALENT STRENGTH AND DESIGN MAY BE SUBSTITUTED WITH THE APPROVAL OF AN ENGINEER.
 2. CONCRETE SHALL HAVE A MINIMUM COMPRESSIVE STRENGTH OF 4000 LBS. PER SQUARE INCH AT 28 DAYS.
 3. MANHOLES SHALL BE BUILT ON THE MAIN SEWER LINE. LATERAL PIPES MAY ENTER MANHOLES AT ANY LOCATION.
 4. MANHOLES WILL BE MEASURED AND PAID FOR AT THE CONTRACT UNIT PRICE PER EACH REGARDLESS OF MANHOLE DEPTH.
 5. CYLINDRICAL SHAPED MANHOLES MAY BE USED AS DIRECTED BY ENGINEER IN LIEU OF MANHOLE DESIGN SHOWN ON THIS PAGE.
 6. CONCRETE FOR PAVEMENT BLOCKOUTS SHALL BE CLASS HAND FINISH CONCRETE (4500 P.S.I.).

NOTE:
PLASTIC COATED STEEL,
NEOPRENE COATED STEEL STEPS OR EQUAL
SHALL BE PLACED SECURELY INTO MANHOLE
COVERS TO PREVENT LIFTING. CENTERS
STAGGERED ON 12" CENTERS HORIZONTALLY.

NOTE:
FRAME AND COVER SHALL BE EAST JORDAN IRON WORKS
CATALOG NO. V-1874 AND 2024A OR EQUAL AND
SHALL BE OF GRAY CAST IRON CONFORMING TO
ASTM A-48 CL. 35.

PROVIDE 3/4" PREMIXED EXPANSION
JOINT BETWEEN MANHOLE AND COVER.
PAVEMENT AND SEAL WITH HOT PURLED RUBBER.

