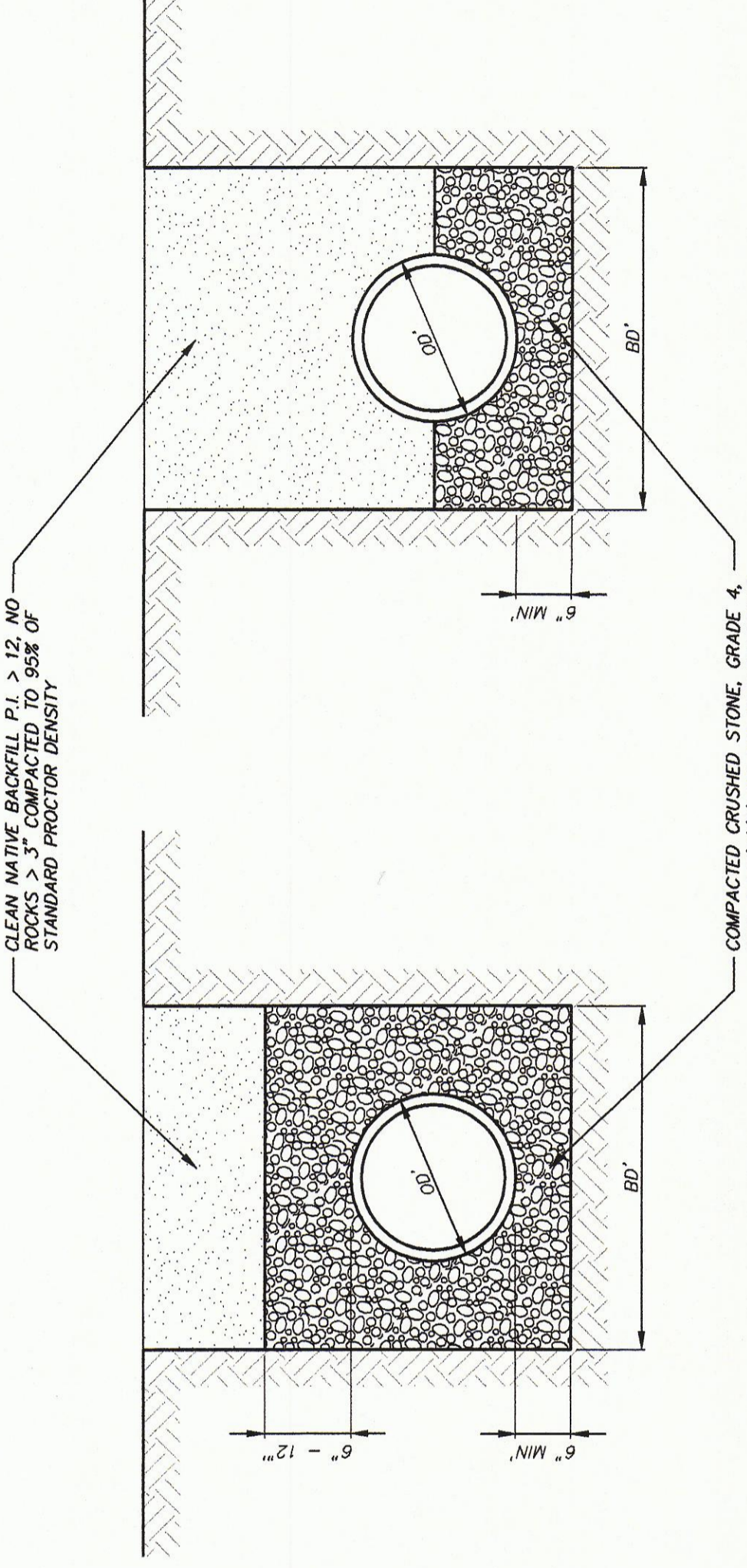
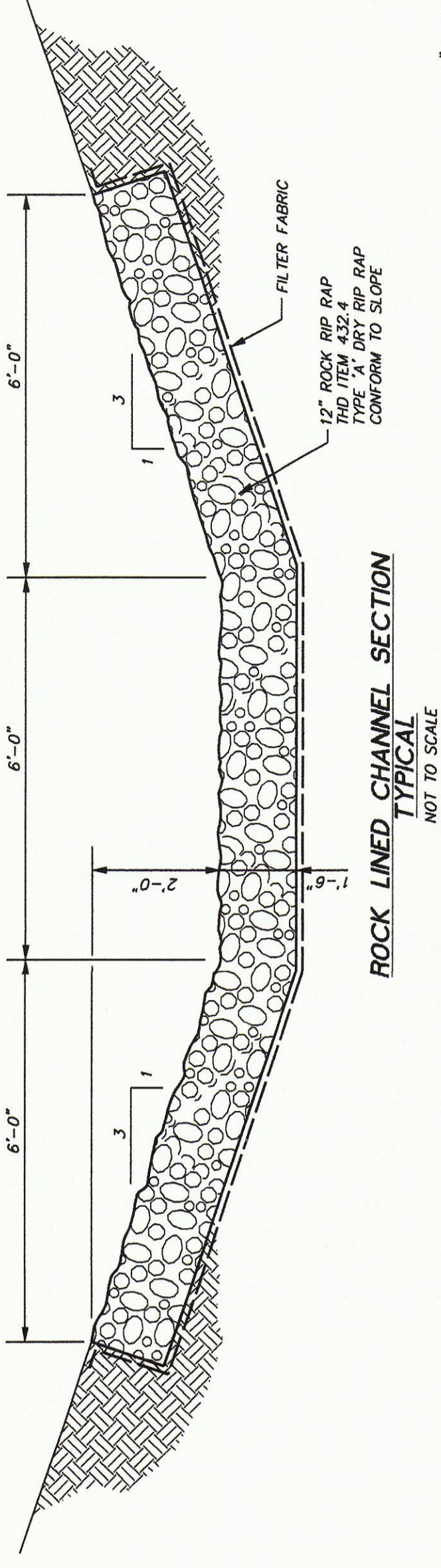


CONCRETE COLLAR  
NOT TO SCALE

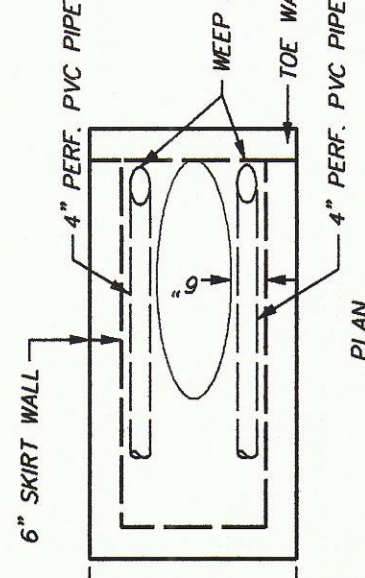


REINFORCED CONCRETE PIPE  
24" MINIMUM COVER  
(FOR PRIVATE OR PUBLIC USE)  
HIGH DENSITY POLYETHYLENE  
(FOR PRIVATE OR PUBLIC USE)  
COMPACTED CRUSHED STONE, GRADE 4,  
ITEM 2.1.8(A)(2) OF THE NCTCOG SPECS.  
24" MINIMUM COVER

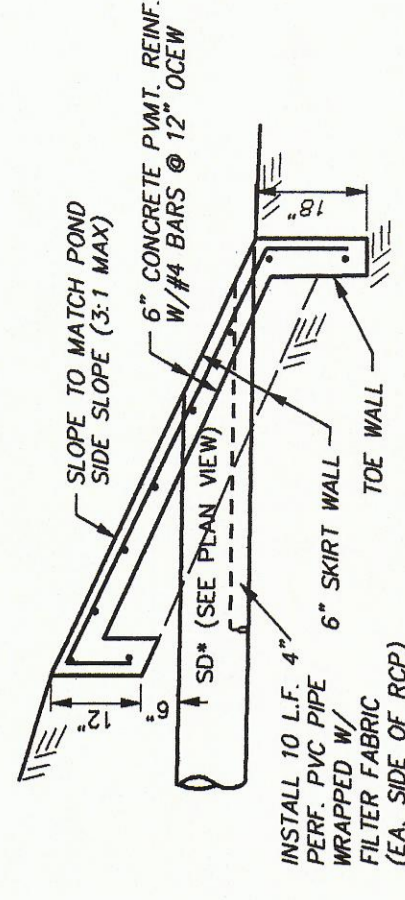
STORM DRAIN EMBEDMENT  
NOT TO SCALE



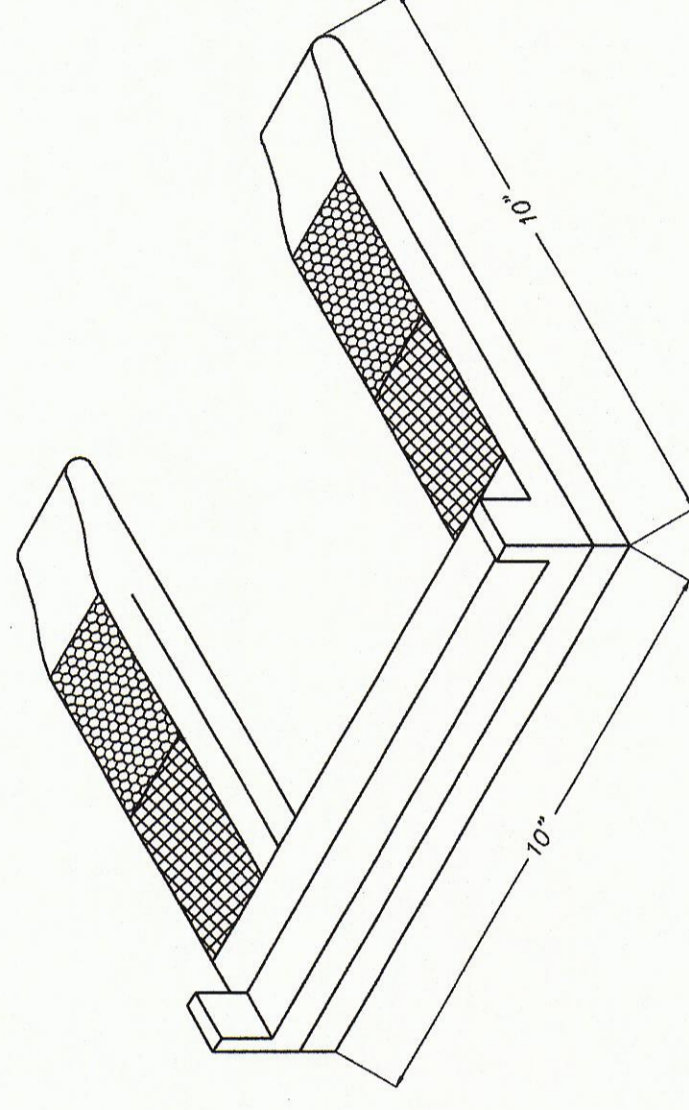
ROCK LINED CHANNEL SECTION  
TYPICAL  
NOT TO SCALE



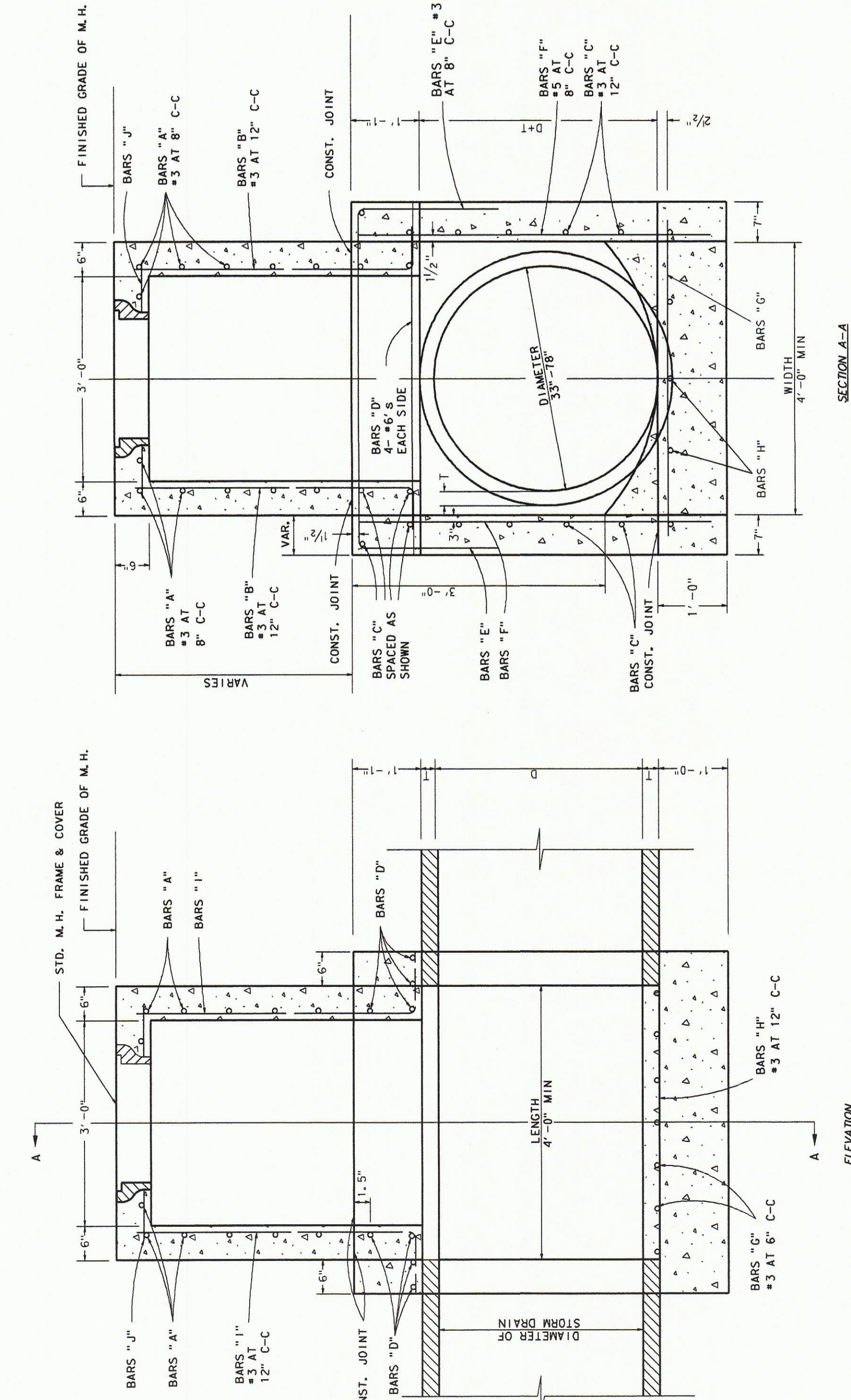
SLOPED HEADWALL  
NOT TO SCALE



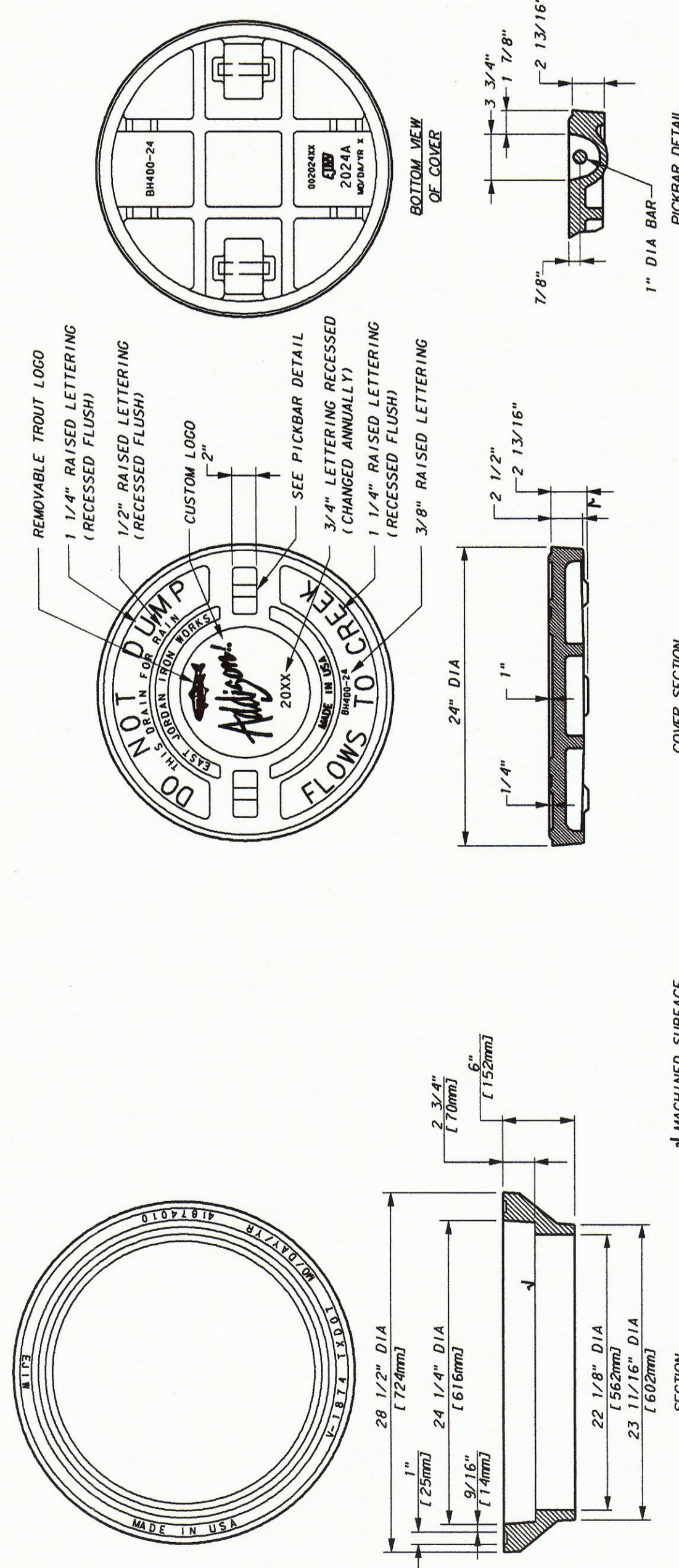
SLOPED HEADWALL  
NOT TO SCALE



MANHOLE STEP DETAIL  
NEOPRENE COATED STEEL OR EQUAL



TYPE B STORM DRAIN MANHOLE  
(FOR PIPE 33" TO 78" IN DIAMETER)

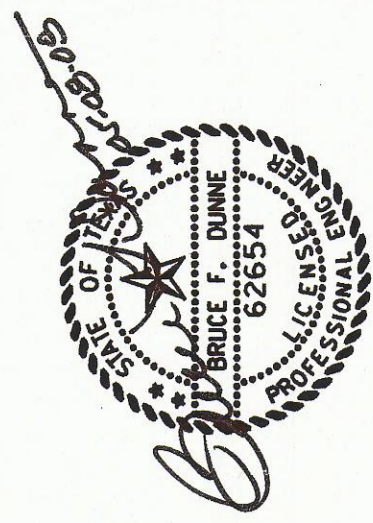


TYPE A & TYPE B  
STORM DRAIN MANHOLE  
NOTE: MAX PIPE SIZE 78"

NOTE: FRAME AND COVER SHALL BE EAST JORDAN IRON WORKS CATALOG NO. V-1874 AND 2024A OR EQUAL AND SHALL BE OF GRAY CAST IRON CONFORMING TO ASTM A-48 CL. 35.  
PROVIDE 3/4" PREMIXED EXPANSION JOINT BETWEEN MANHOLE AND COVER. PROVIDE RUBBER AND SEAL WITH NOT PURLED RUBBER.

- NOTES APPLICABLE TO ALL MANHOLES
1. PREFABRICATED MANHOLES OF EQUIVALENT STRENGTH AND DESIGN MAY BE SUBSTITUTED WITH THE APPROVAL OF AN ENGINEER.
  2. CONCRETE SHALL HAVE A MINIMUM COMPRESSIVE STRENGTH OF 4000 LBS. PER SQUARE INCH AT 28 DAYS.
  3. MANHOLES SHALL BE BUILT ON THE MAIN SEWER LINE. LATERAL PIPES MAY ENTER MANHOLES AT ANY LOCATION.
  4. MANHOLES WILL BE MEASURED AND PAID FOR AT THE CONTRACT UNIT PRICE PER EACH REGARDLESS OF MANHOLE DEPTH.
  5. CYLINDRICAL SHAPED MANHOLES MAY BE USED AS DIRECTED BY ENGINEER IN LIEU OF MANHOLE DESIGN SHOWN ON THIS PAGE.
  6. CONCRETE FOR PAVEMENT BLOCKOUTS SHALL BE CLASS HAND FINISH CONCRETE (4500 P.S.I.).

NOTE:  
PLASTIC COATED STEEL,  
NEOPRENE COATED STEEL STEPS OR EQUAL  
SHALL BE PLACED SECURELY INTO MANHOLE  
AND COVER. THE STEPS SHALL BE STAGGERED  
ON 12" CENTERS HORIZONTALLY.



REVISION  
NO. BY DATE

STORM DRAIN DETAILS

PROJECT	DESIGN	DRAWN	DATE	FILE	SHEET
5019-01	JAM	SAM	MAY 8, 2008	PW # 2007-001	5

Consulting Engineers, Inc.  
250 W. Southlake Blvd., Suite 117  
Southlake, TX 76082 (817) 552-6210  
Civil Engineers - Designers - Planners

TOWN OF ADDISON  
DALLAS COUNTY, TEXAS  
STORM DRAIN RELOCATION  
BROOKHAVEN CLUB DRIVE