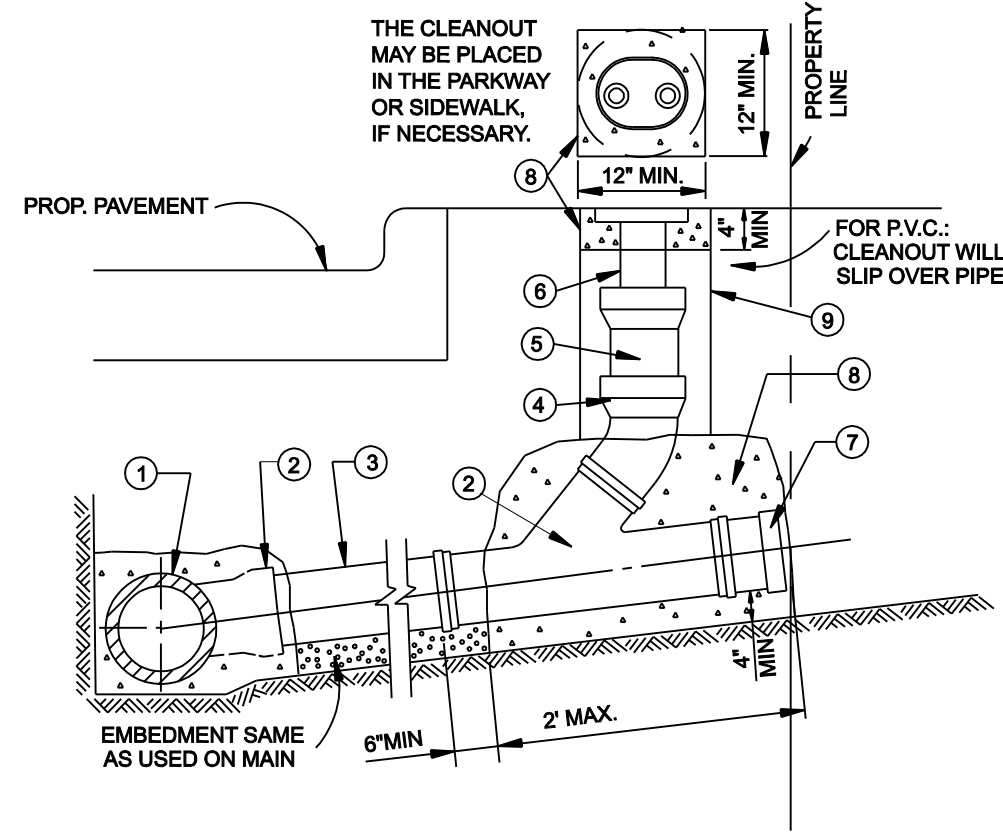


- KEY:
- 1 WASTEWATER MAIN
 - 2 WYE
 - 3 WASTEWATER LAT. (LENGTH VARIES)
 - 4 4" LONG RADIUS 45° BEND
 - 5 4" STACK (LENGTH VARIES)
 - 6 4" WASTEWATER LAT. CLEANOUT CASTING

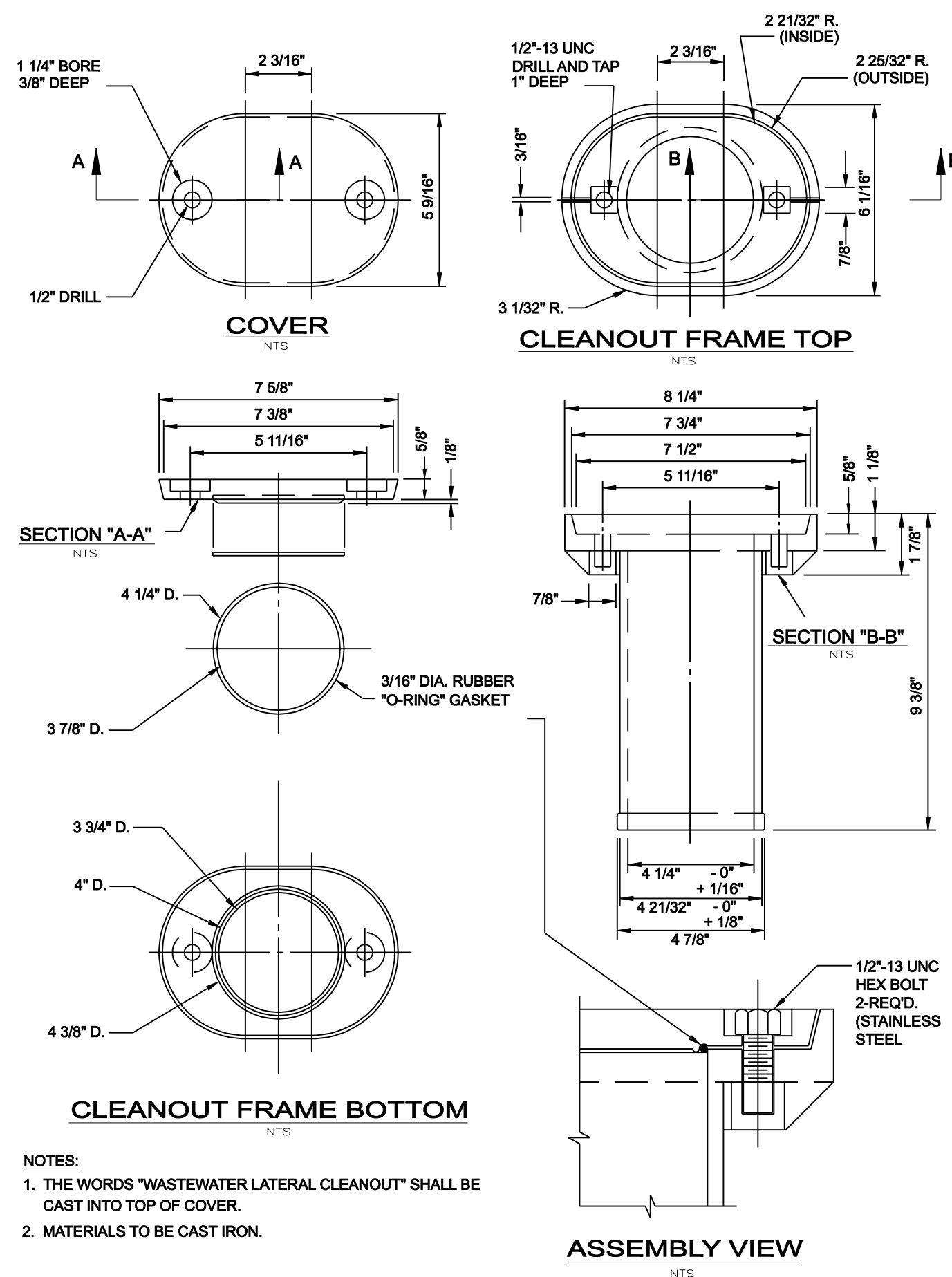
- 7 PLUG
- 8 CLASS "B" CONCRETE
- 9 COMPACTED AS SPECIFIED, OR INUNDATED SAND



NOTES:

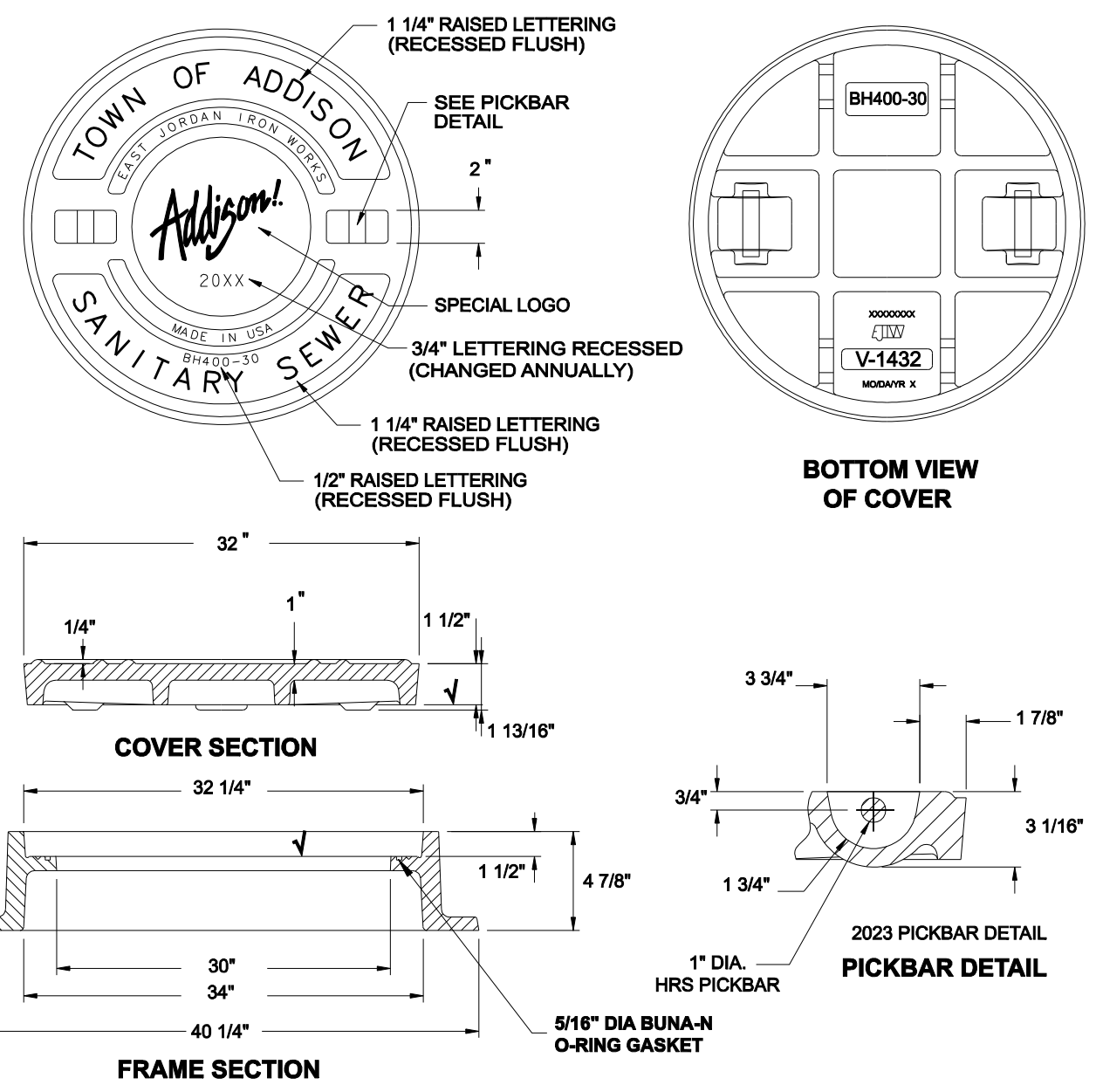
- CLEANOUT CASTING TO BE FURNISHED AND PLACED PER SPECIAL CONDITIONS, IN VEHICLE TRAFFIC AREAS AND FOR COMMERCIAL MAINLINE LATERALS, WASTEWATER CLEANOUT SHALL BE OF CAST IRON.
- SLOPE OF LATERAL TO BE 1% MIN., 2% MAX. UNLESS SHOWN OTHERWISE ON THE PLAN & PROFILE.
- THE CLEANOUT STACK & CASTING MAY BE PLACED IN THE PARKWAY, VEHICLE TRAFFIC AREAS, OR SIDEWALK, IF NECESSARY.

SANITARY SEWER LATERAL CLEANOUT



- NOTES:
- THE WORDS "WASTEWATER LATERAL CLEANOUT" SHALL BE CAST INTO TOP OF COVER.
 - MATERIALS TO BE CAST IRON.

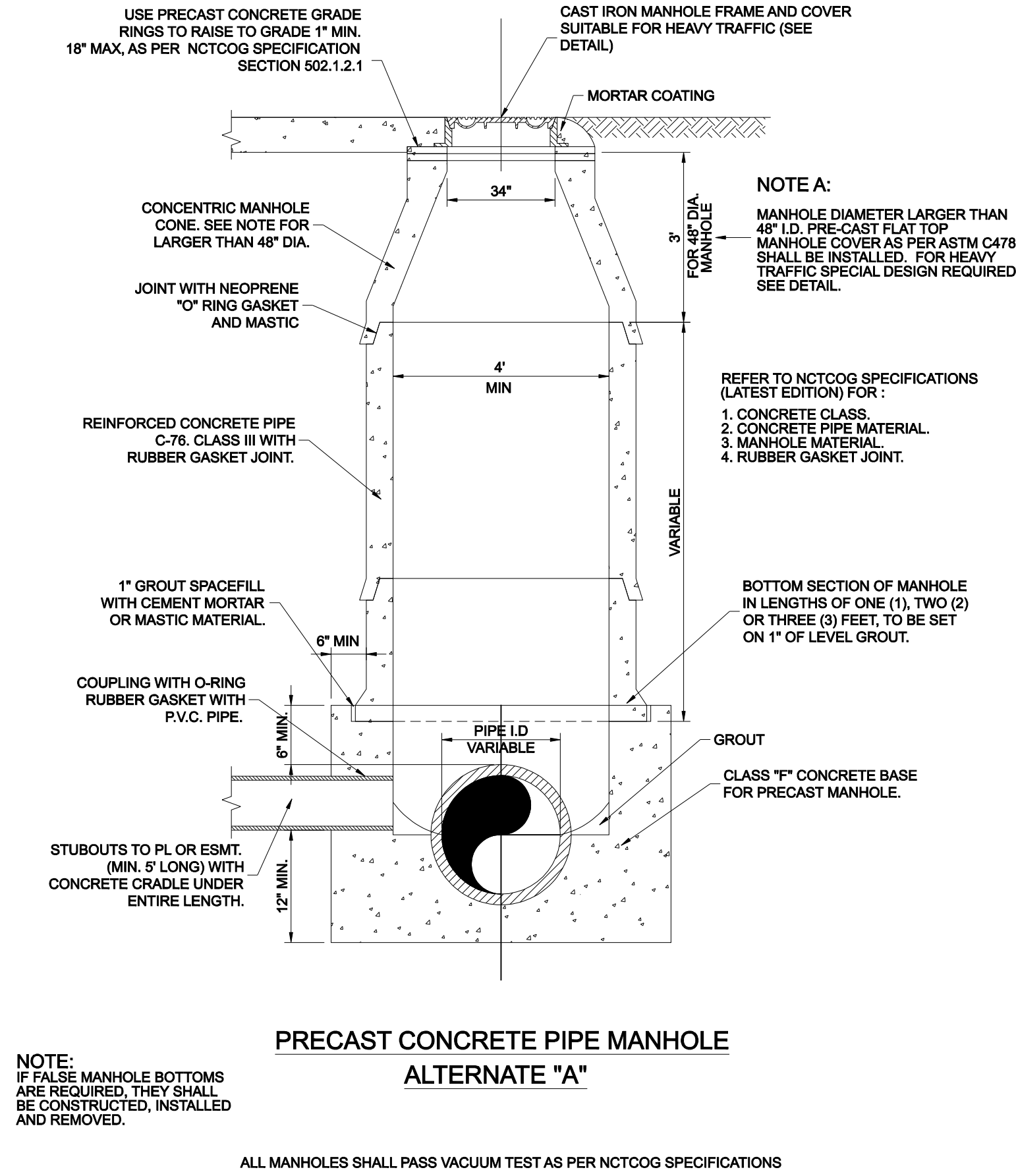
SANITARY SEWER LATERAL CLEANOUT FRAME & COVER



LOAD RATING	COATING	ESTIMATED WEIGHT	MATERIAL SPECIFICATION
HEAVY DUTY	DIPPED	COVER: LBS 86 kg	COVER - GRAY IRON ASTM A48 CL35B

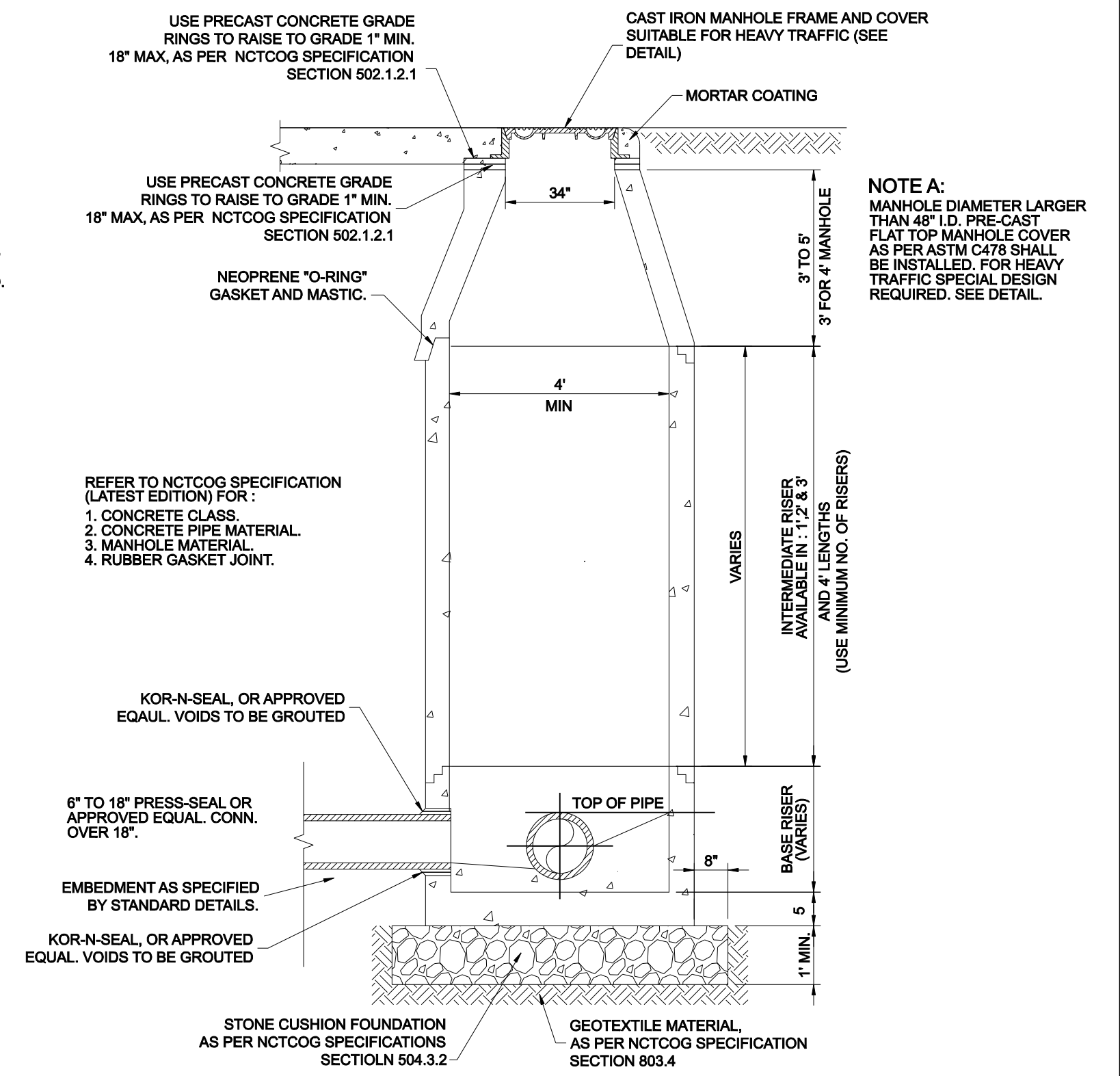
DESIGNATES MACHINE SURFACE

CAST IRON FRAME AND COVER



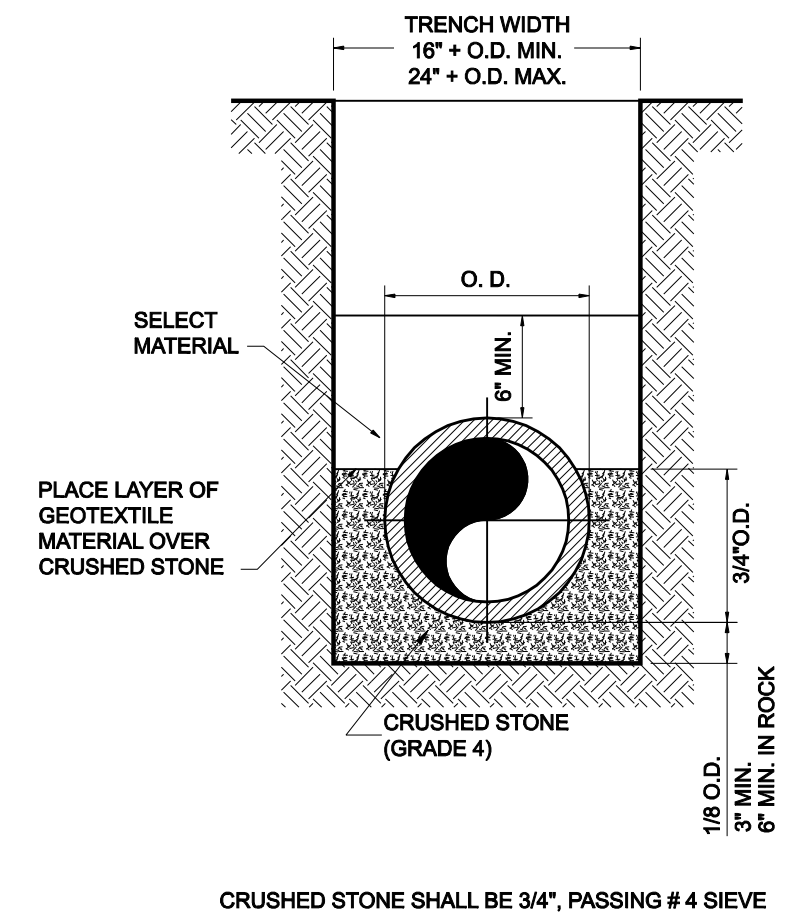
PRECAST CONCRETE PIPE MANHOLE ALTERNATE "A"

ALL MANHOLES SHALL PASS VACUUM TEST AS PER NCTCOG SPECIFICATIONS



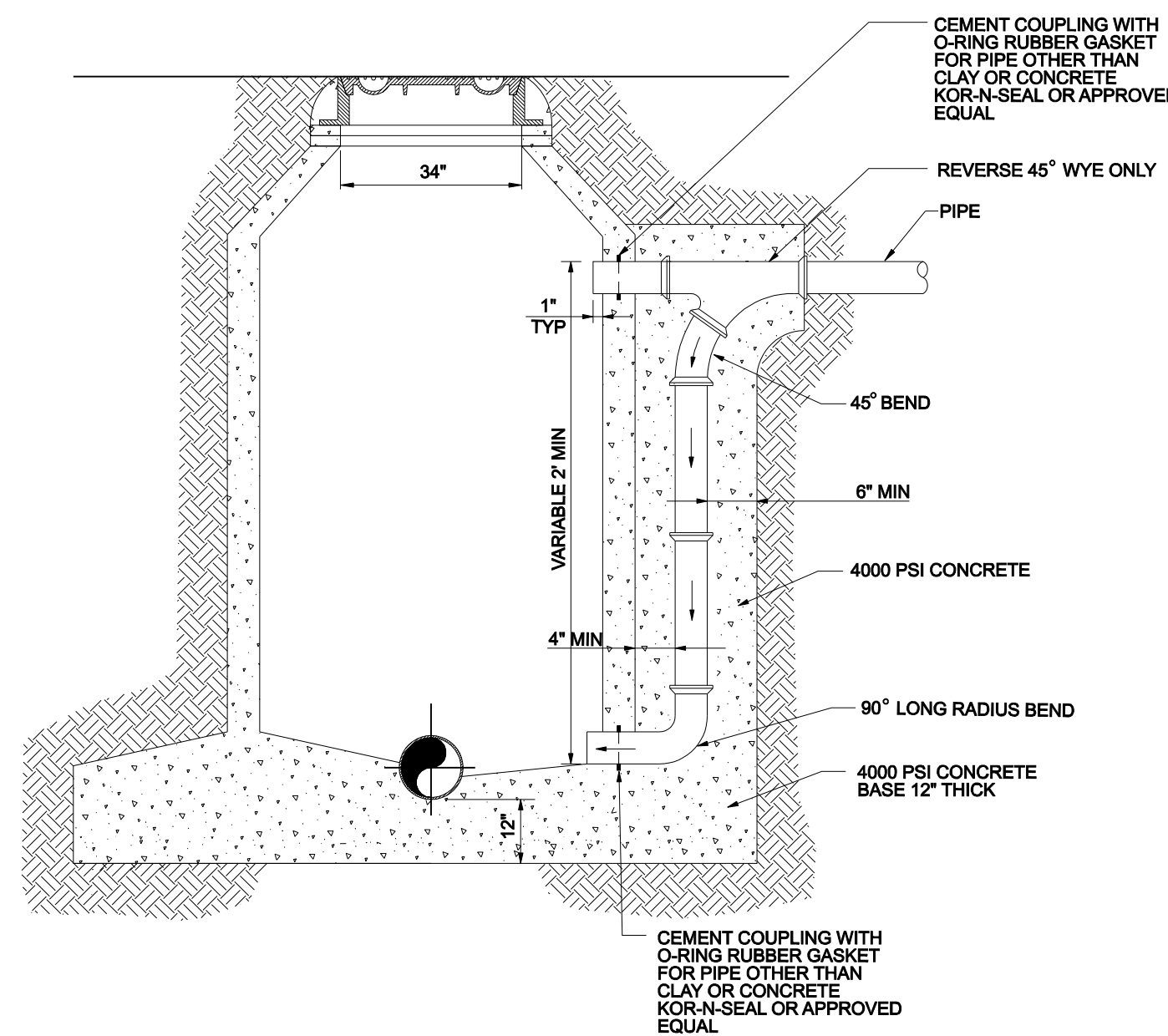
PRECAST CONCRETE MANHOLE ALTERNATE "B"

ALL MANHOLES SHALL PASS VACUUM TEST AS PER NCTCOG SPECIFICATIONS



CLASS "B+" EMBEDMENT

TYPICAL BACKFILL WATER MAIN P.V.C. WATER PIPE



EXTERIOR MANHOLE DROP CONNECTION

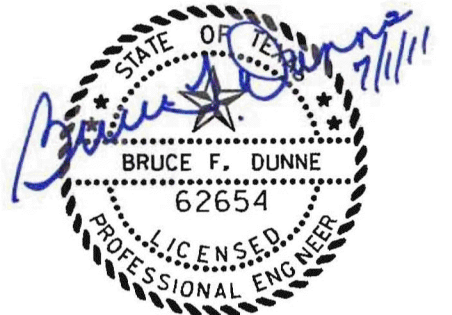
NO.	REVISION	BY	DATE

Addison! TOWN OF ADDISON
DALLAS COUNTY, TEXAS
PAVING, DRAINAGE & UTILITY IMPROVEMENTS
BELLA LANE

SANITARY SEWER DETAILS

icon Consulting Engineers, Inc.		250 W. Southlake Blvd., Suite 117	
Civil Engineers - Designers - Planners		Southlake, TX 76092 (817) 552-6210	
PROJECT	DESIGN	DRAWN	DATE
5029-03	ICE	ICE	FEB 01, 2011
		FILE	SHEET
		PW # 2010-08	34

RECORD DRAWINGS 06/13/12



PAVING, DRAINAGE, & UTILITY IMPROVEMENTS - BELLA LANE