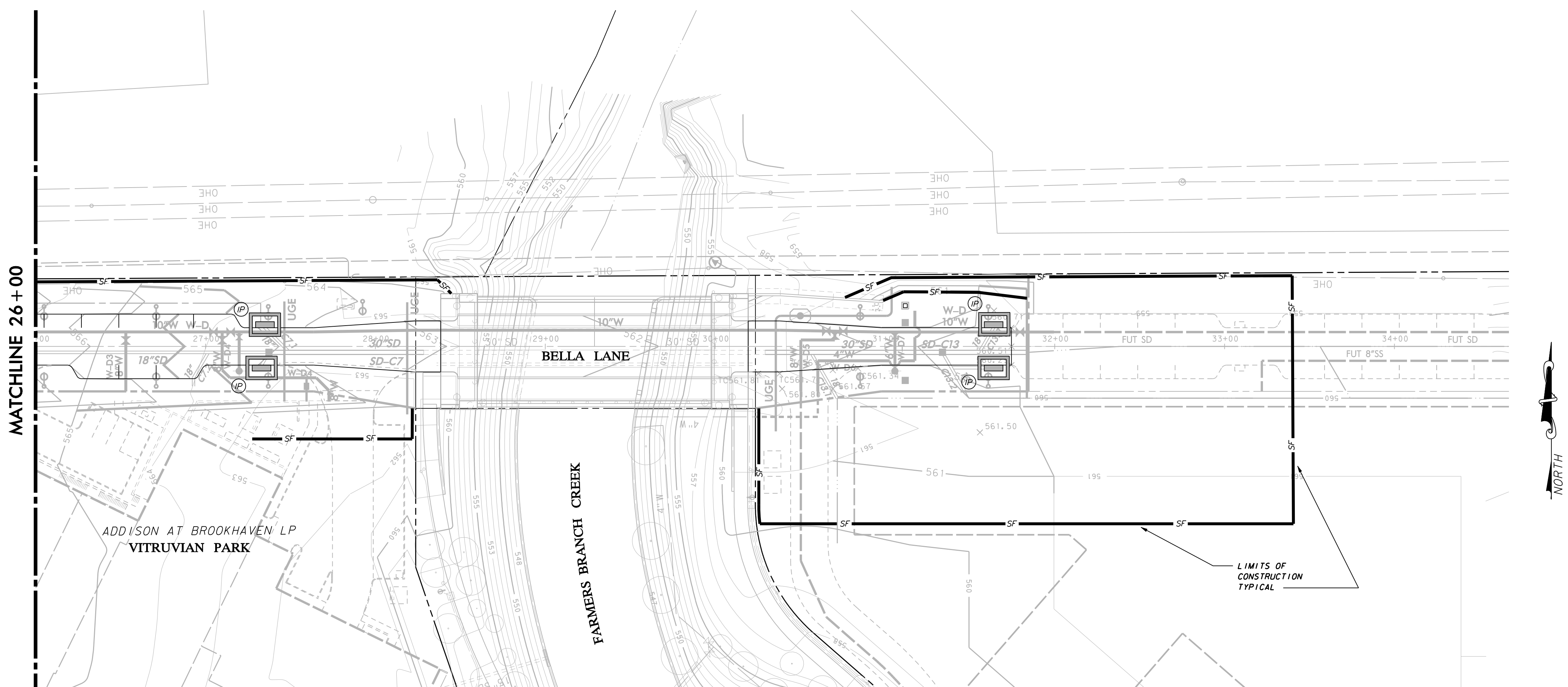


- EROSION CONTROL NOTES**
1. **GENERAL CONSTRUCTION NOTES:** REFER TO SHEET 3 "GENERAL CONSTRUCTION NOTES, LEGEND AND ABBREVIATIONS" FOR THE GENERAL CONSTRUCTION NOTES FOR THE PROJECT.
 2. **SWPPP COMPLIANCE:** THE CONTRACTOR SHALL BE REQUIRED TO COMPLY WITH THE CONDITIONS OF THE STORM WATER POLLUTION PREVENTION PLAN (SWPPP) WHILE CONDUCTING HIS ACTIVITIES ON THIS PROJECT. IN ADDITION TO CONSTRUCTING THOSE ITEMS INDICATED ON THE PLAN SHEETS, COMPLIANCE WITH THE SWPPP INCLUDES CONFORMANCE TO CERTAIN PRACTICES AND PROCEDURES (IDENTIFIED IN THE SWPPP) DURING CONSTRUCTION. THE SWPPP PLANS AND DOCUMENTS ARE PROVIDED FOR THE SOLE BENEFIT OF THE CONTRACTOR AS A PLANNING TOOL FOR COMPLYING WITH THE ENVIRONMENTAL REGULATIONS OF THIS PROJECT. THE CONTRACTOR IS EXPECTED TO PROVIDE, EXPAND, SUBMIT AND MONITOR A FULL COMPREHENSIVE SWPPP BEYOND WHAT IS HEREIN PROVIDED.
 3. **BMP INSTALLATION:** PRIOR TO COMMENCING GRADING OPERATIONS, THE CONTRACTOR SHALL INSTALL ALL SWPPP MEASURES AND DEVICES AS INDICATED ON THE EROSION & SEDIMENT CONTROL PLAN. ALL SWPPP MEASURES AND DEVICES SHALL BE IN ACCORDANCE WITH SPECIFICATIONS AND DETAILS SHOWN IN THE NORTH CENTRAL TEXAS COUNCIL OF GOVERNMENTS CONSTRUCTION "BEST MANAGEMENT PRACTICES" (BMP) MANUAL OR AS MODIFIED BY THE CONTRACT DOCUMENTS.
 4. **CLEANING, REPAIR AND MAINTENANCE:** THE CONTRACTOR SHALL REFER TO THE SWPPP FOR SEQUENCING OF CONSTRUCTION, INSTALLATION OF NEW EROSION CONTROL DEVICES AND CLEANING, REPAIR AND MAINTENANCE OF EXISTING EROSION CONTROL DEVICES. THE CONTRACTOR SHALL REWASH, RELOCATE AND/OR ADD DEVICES TO REFLECT ACTUAL SITE CONDITIONS AND TO ACCOMMODATE LOCATIONS FOR CONSTRUCTION TRAILER AREAS, STORAGE AREAS, FUELING AREAS, TOILETS, TRASH RECEPTACLES AND WASHOUT AREAS. ANY ACCIDENTAL RELEASE OF SEDIMENT OR POLLUTANTS FROM THE SITE SHALL BE CLEANED BY THE CONTRACTOR.
 5. **SITE ENTRY/EXIT LOCATIONS:** SITE ENTRY AND EXIT LOCATIONS SHALL BE MAINTAINED BY THE CONTRACTOR IN A CONDITION THAT WILL PREVENT TRACKING OR FLOWING OF SEDIMENT ONTO PUBLIC ROADWAYS. ALL SEDIMENT SPILLED, DROPPED, WASHED OR TRACKED ONTO PUBLIC ROADWAYS MUST BE REMOVED IMMEDIATELY. WHEN WASHING OF VEHICLES IS REQUIRED TO REMOVE SEDIMENT PRIOR TO ENTRANCE TO A PUBLIC ROADWAY, IT SHALL BE DONE ON AN AREA STABILIZED WITH CRUSHED STONE WHICH DRAINS INTO AN APPROVED SEDIMENT BASIN. ALL FINES IMPOSED FOR TRACKING ONTO PUBLIC ROADS SHALL BE PAID BY THE CONTRACTOR.
 6. **PROTECTION OF ADJACENT PROPERTY:** CONTRACTOR SHALL ASSUME FULL LIABILITY FOR DAMAGE TO ADJACENT PROPERTIES AND/OR PUBLIC RIGHT-OF-WAY RESULTING FROM FAILURE TO FULLY IMPLEMENT AND EXECUTE ALL EROSION CONTROL METHODS AND PROCEDURES SHOWN AND NOTED IN THE PLANS AND SWPPP.
 7. **RE-VEGETATION:** AT THE COMPLETION OF CONSTRUCTION OPERATIONS, ALL DISTURBED AREAS SHALL BE VEGETATED IN ACCORDANCE WITH THE SWPPP. THE CONTRACTOR SHALL PROVIDE HYDROMULCH SEEDING AND/OR SODDING FOR ALL DISTURBED AREAS IN ACCORDANCE WITH ALL GOVERNING AUTHORITIES' SPECIFICATIONS.
 8. **BMP REMOVAL:** THE CONTRACTOR SHALL REMOVE AND DISPOSE OF ALL SEDIMENT BARRIERS AND INLET PROTECTION AFTER VEGETATION HAS BEEN COMPLETED AND ALL AREAS OF THE SITE HAVE BEEN STABILIZED AND ACCEPTED BY THE GOVERNING AUTHORITIES AND THE ENGINEER.

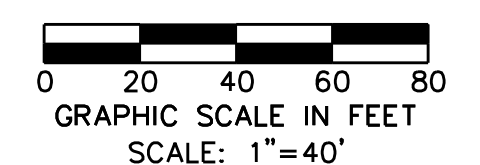


WARNING

CONTRACTOR IS TO CONTACT TEXAS ONE-CALL SYSTEM (1-800-245-4545) OR OTHER UTILITY LOCATING SERVICES AT LEAST 48 HOURS PRIOR TO CONSTRUCTION ACTIVITIES. ICON CONSULTING ENGINEERS, INC. IS NOT RESPONSIBLE FOR KNOWING ALL EXISTING UTILITIES IN THE PROJECT AREA NOR FOR DEPICTING THE EXACT LOCATIONS OF UTILITIES ON THESE DRAWINGS.

BM #1 REF. ELEVATION = 559.47
 SQUARE CUT IN TOP OF CURB, SOUTH MEDIAN END NOSE, MARSH LANE
 1127' NORTH OF VITRUVIAN WAY

BM #2 REF. ELEVATION = 547.84
 SQUARE CUT IN TOP OF CURB, NORTH MEDIAN END NOSE, AT INTERSECTION OF VITRUVIAN WAY AND MARSH LANE.



NO.	REVISION	BY	DATE

TOWN OF ADDISON
 DALLAS COUNTY, TEXAS

PAVING, DRAINAGE & UTILITY IMPROVEMENTS
 BELLA LANE

EROSION & SEDIMENT CONTROL PLAN

icon Consulting Engineers, Inc.		250 W. Southlake Blvd., Suite 117			
Civil Engineers - Designers - Planners		Southlake, TX 76092 (817) 552-8210			
PROJECT	DESIGN	DRAWN	DATE	FILE	SHEET
5029-03	ICE	ICE	FEB 01, 2011	PW # 2010-08	40

PAVING, DRAINAGE, & UTILITY IMPROVEMENTS - BELLA LANE