

**SPACING DIAGRAM FOR JOINT**  
NOT TO SCALE

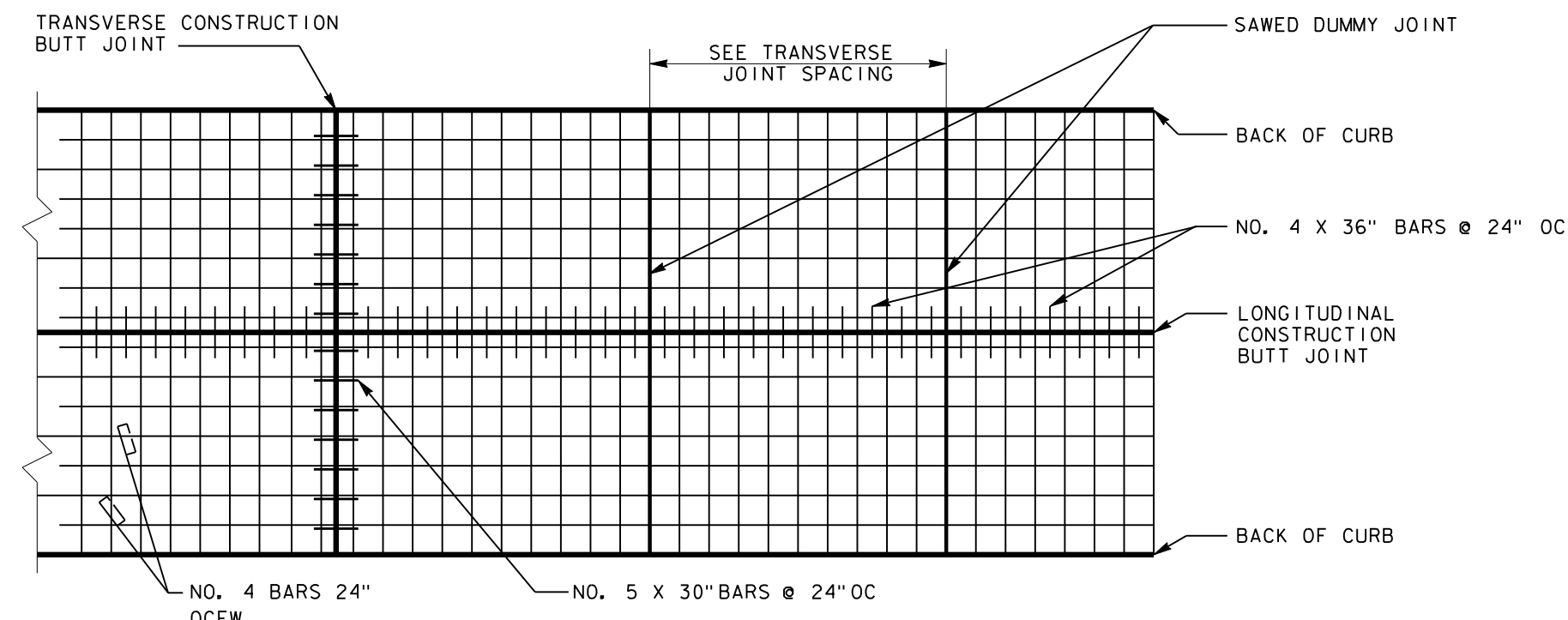
- DRAWING NOTES:
1. ALL BLOCK-OUTS ARE 9" EXCEPT FOR INLETS.
  2. END OF EACH BLOCK-OUT TO HAVE TRANSVERSE JOINT.

TRANSVERSE JOINT SPACING	
PAVEMENT THICKNESS	SPACING
T = 5"	10 FEET
T = 6"	12 FEET
T = 7"	14 FEET
T = 8" OR 10"	16 FEET

LONGITUDINAL JOINT SPACING	
STREET WIDTH	SPACING
22' TO 30'	ON CL
36' & 40'	ON CL & 8' FROM BACK OF CURB
38'	6' LT & RT OFF CL
44'	ON CL AND 11' OFF CL
48'	ON CL AND 12' OFF CL
60'	6' AND 18' OFF CL
76'	8', 20' AND 32' OFF CL

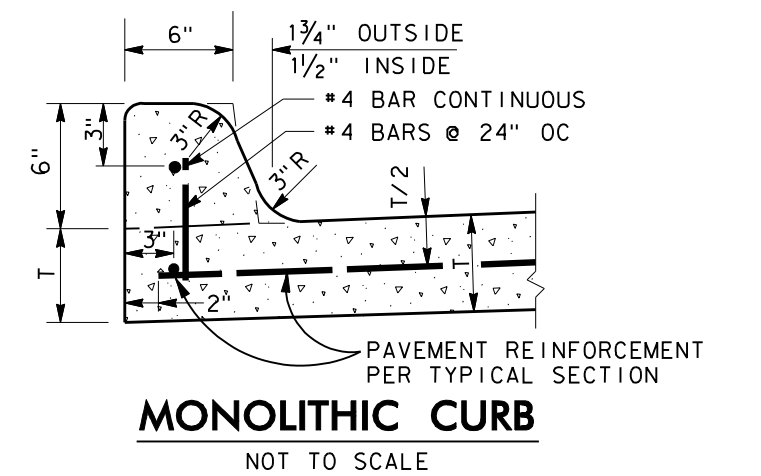
JOINT DEPTH	
PAVEMENT THICKNESS	JOINT DEPTH
T = 5"	1 1/4"
T = 6"	1 1/2"
T = 7"	1 3/4"
T = 8" OR 10"	2"

TRANSVERSE EXPANSION JT SPACING	
VARIES (200' C-C MAXIMUM)	

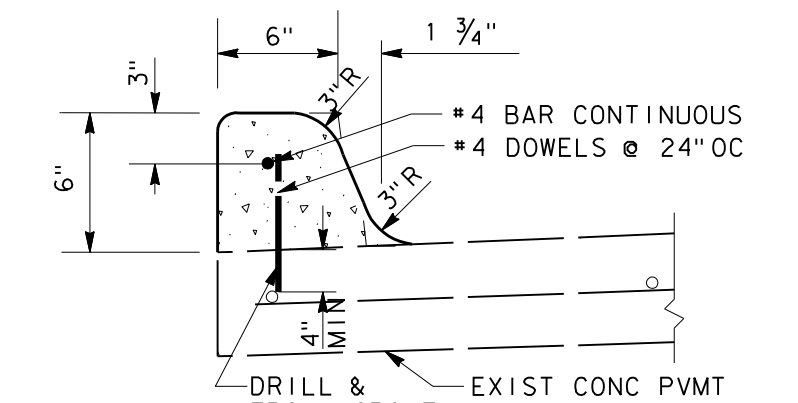


**PLAN OF STEEL LAYOUT**  
NOT TO SCALE

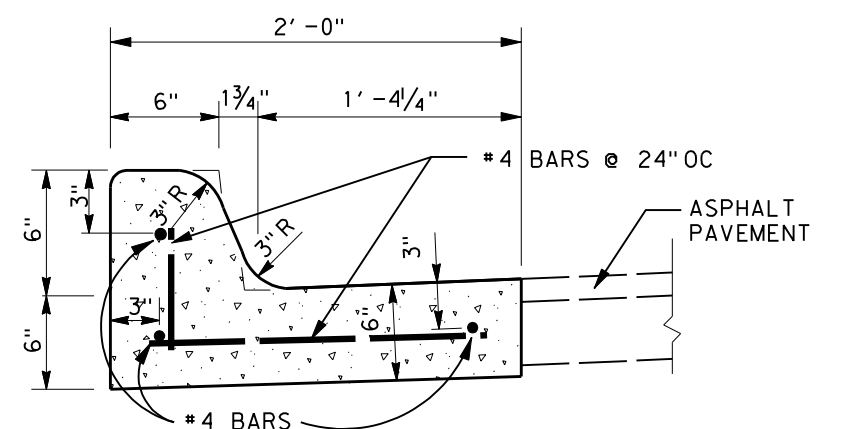
- DRAWING NOTES:
1. THE REINFORCING STEEL WILL EXTEND THROUGH LONGITUDINAL CONSTRUCTION BUTT, SAWED DUMMY, AND TRANSVERSE CONSTRUCTION BUTT JOINTS.



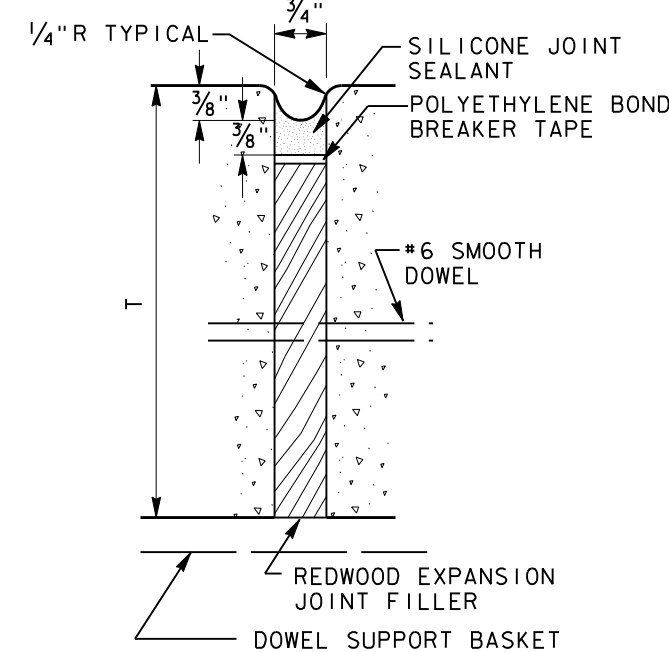
**MONOLITHIC CURB**  
NOT TO SCALE



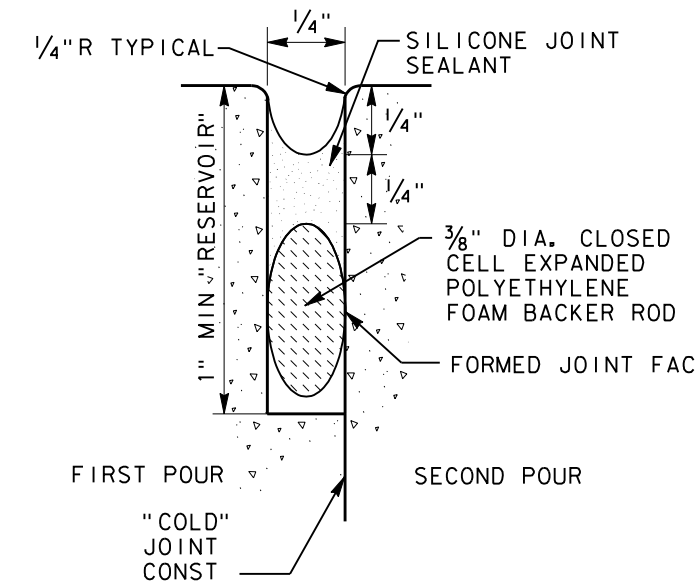
**ATTACHED CURB**  
NOT TO SCALE



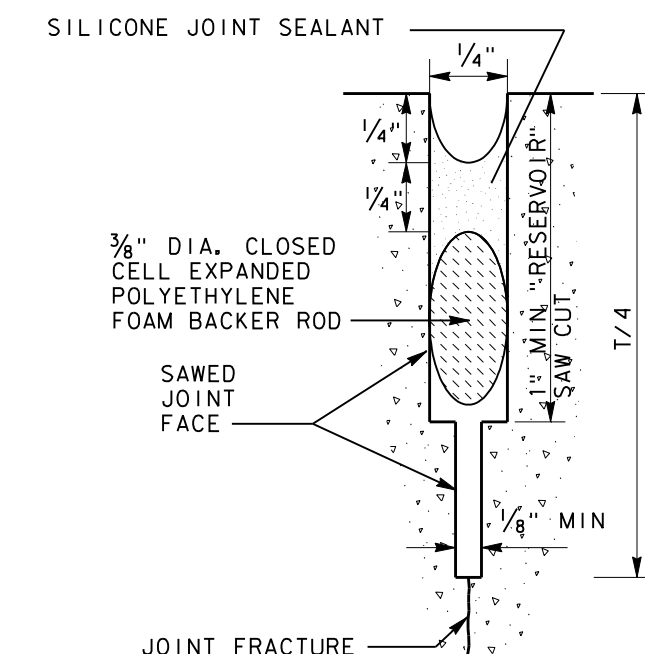
**6" CURB AND GUTTER**  
NOT TO SCALE



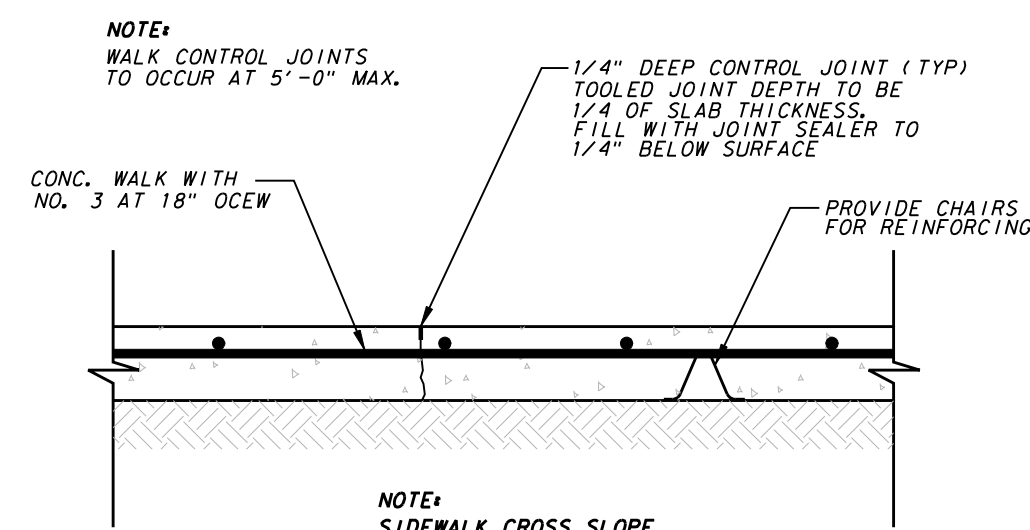
**JOINT DETAIL A SEAL FOR TRANSVERSE EXPANSION JOINT**  
NOT TO SCALE



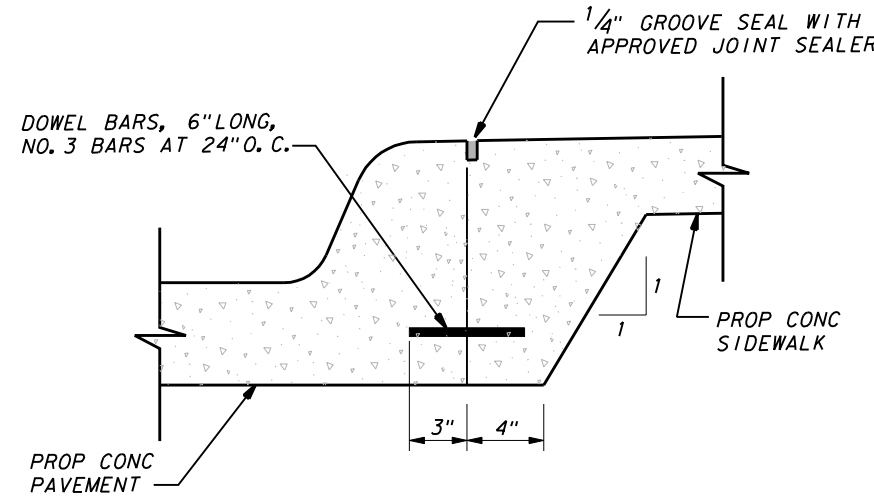
**JOINT DETAIL B SEAL FOR LONGITUDINAL AND TRANSVERSE CONSTRUCTION BUTT JOINT**  
NOT TO SCALE



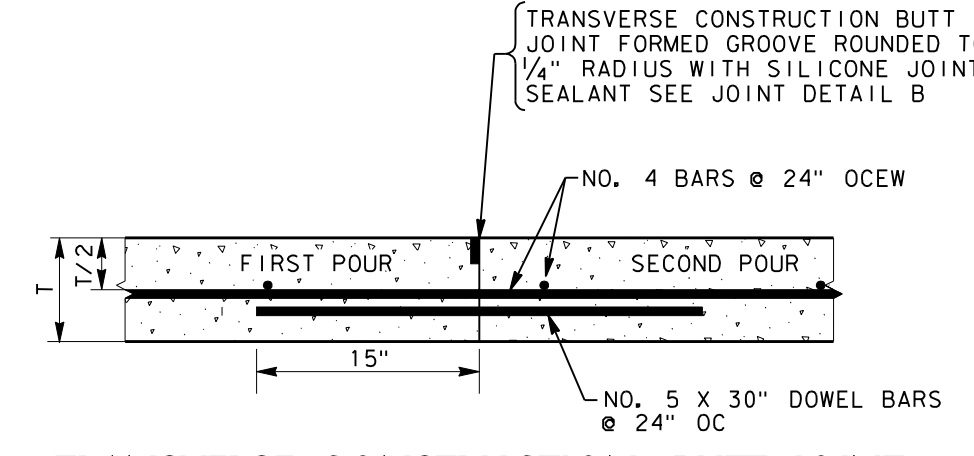
**JOINT DETAIL C SEAL FOR SAWED DUMMY JOINT**  
NOT TO SCALE



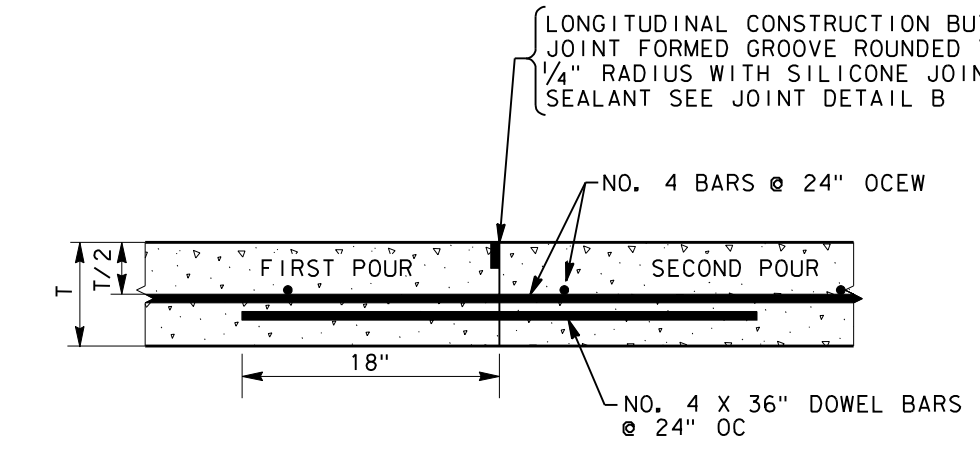
**SIDEWALK CONTROL JOINT**  
NOT TO SCALE



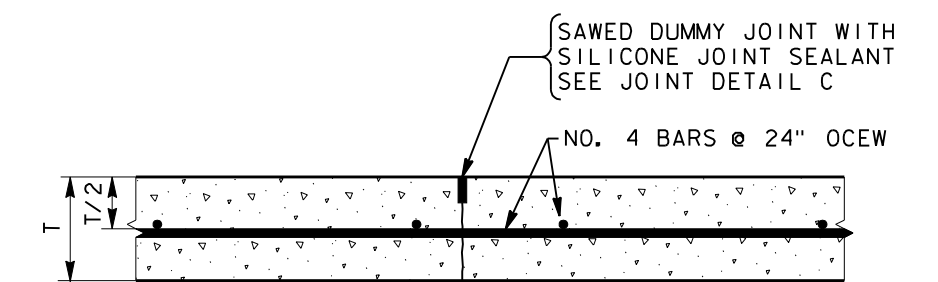
**JOINT DETAIL FOR SIDEWALK ADJACENT TO CURB**  
NOT TO SCALE



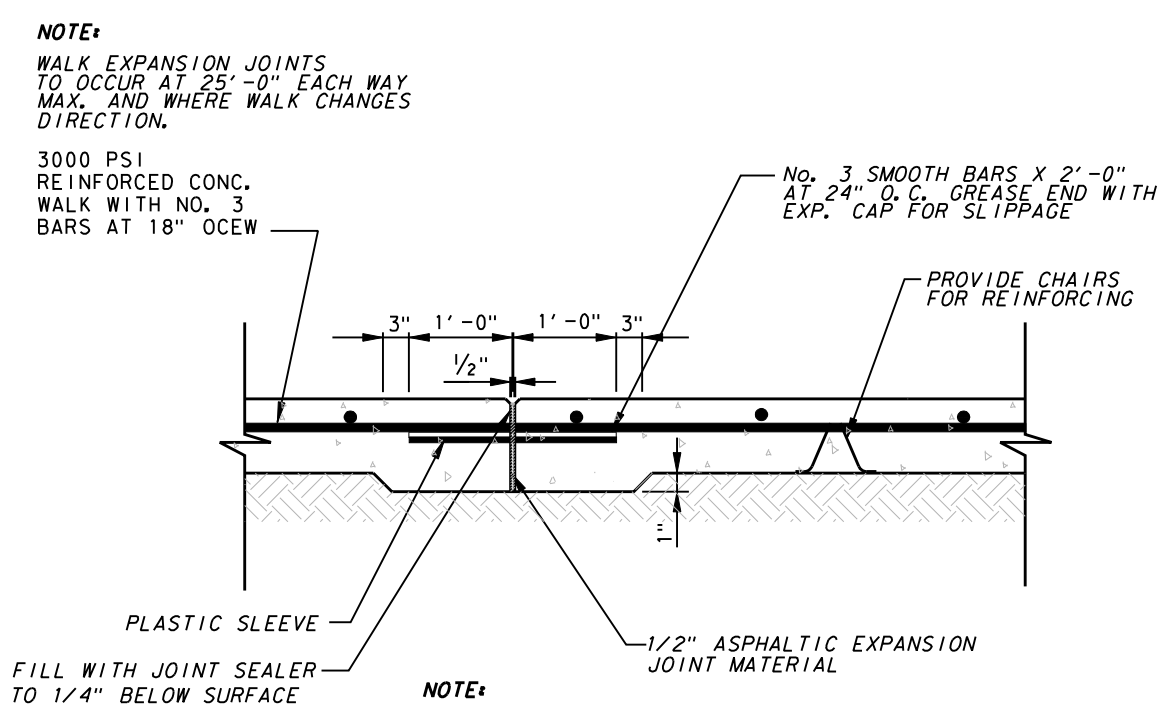
**TRANSVERSE CONSTRUCTION BUTT JOINT**  
NOT TO SCALE



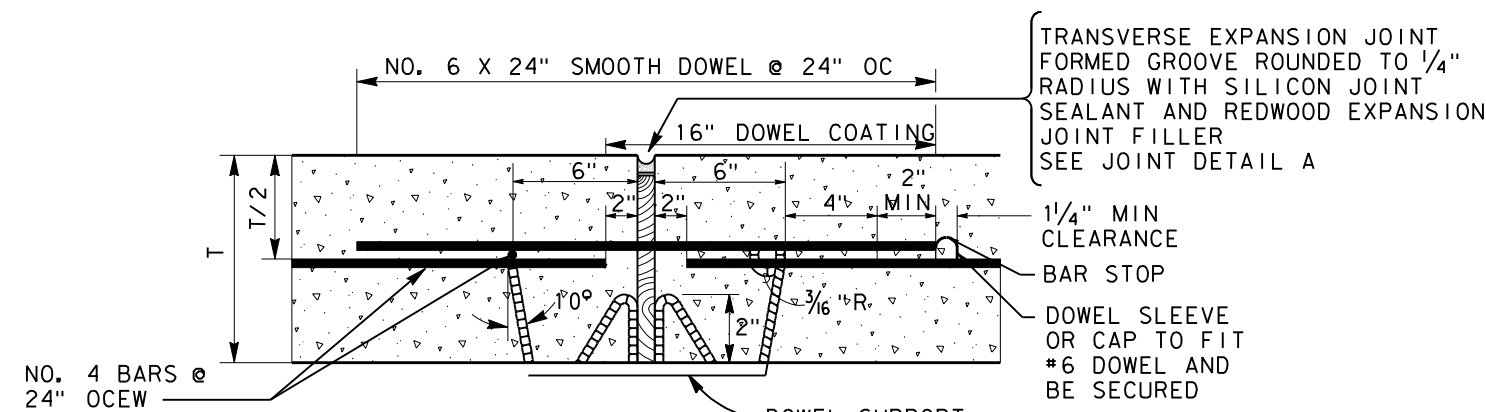
**LONGITUDINAL CONSTRUCTION BUTT JOINT**  
NOT TO SCALE



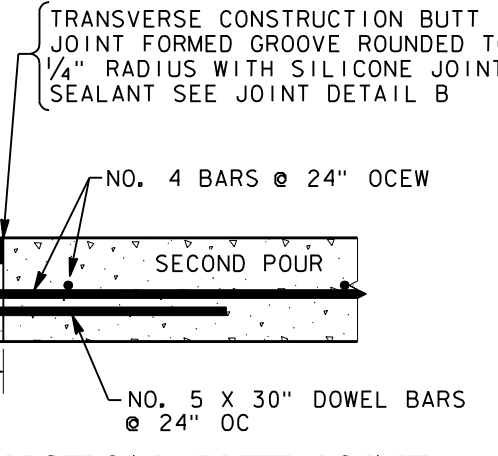
**TRANSVERSE OR LONGITUDINAL SAWED DUMMY JOINT**  
NOT TO SCALE



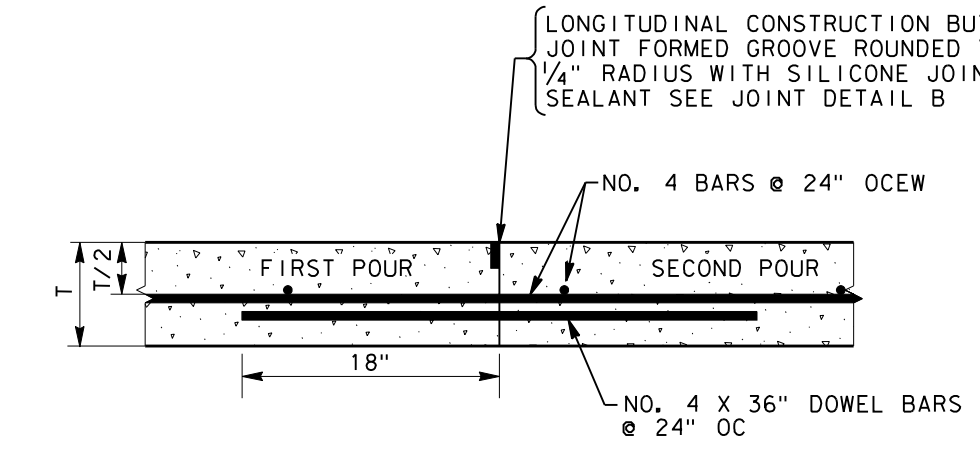
**SIDEWALK EXPANSION JOINT**  
NOT TO SCALE



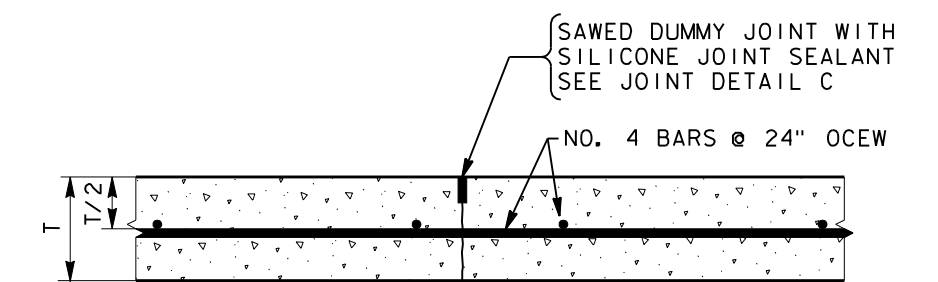
**TRANSVERSE EXPANSION JOINT**  
NOT TO SCALE



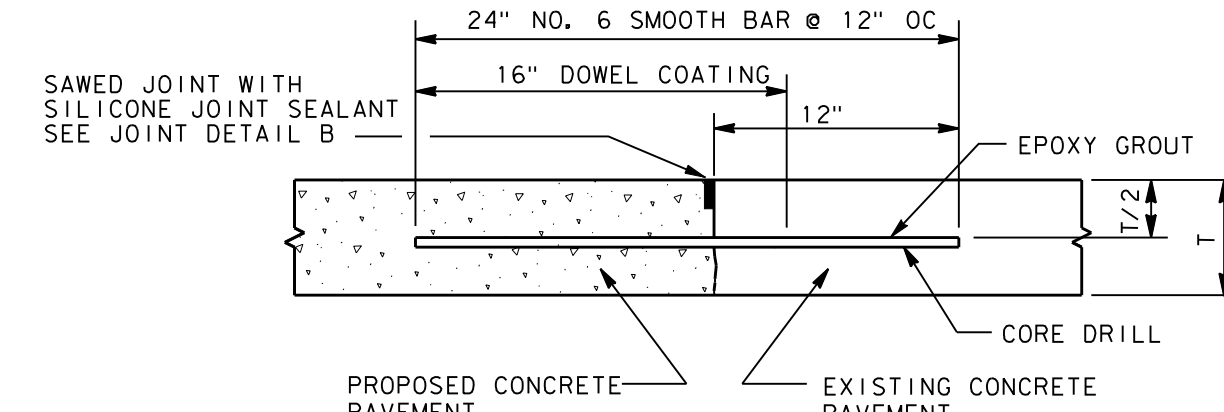
**TRANSVERSE CONSTRUCTION BUTT JOINT**  
NOT TO SCALE



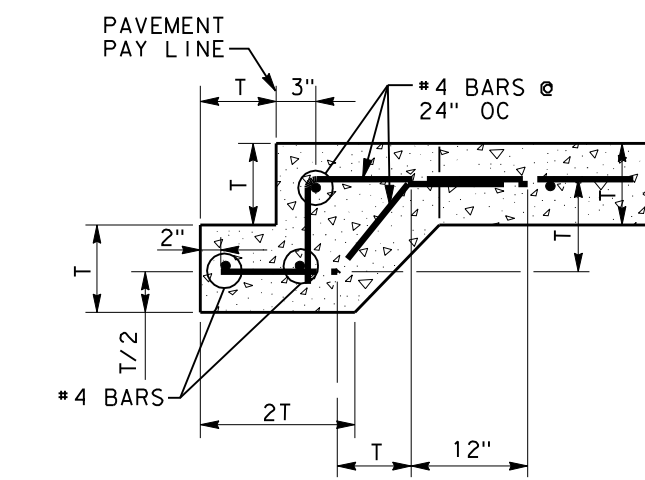
**LONGITUDINAL CONSTRUCTION BUTT JOINT**  
NOT TO SCALE



**TRANSVERSE OR LONGITUDINAL SAWED DUMMY JOINT**  
NOT TO SCALE



**PROPOSED TO EXISTING CONCRETE PAVEMENT**  
NOT TO SCALE



**CONCRETE STREET HEADER**  
NOT TO SCALE



NO.	REVISION	BY	DATE

**Addison!** TOWN OF ADDISON  
DALLAS COUNTY, TEXAS  
PAVING, DRAINAGE & UTILITY IMPROVEMENTS  
PONTE AVENUE CIRCLE

**PAVING DETAILS**

PROJECT	DESIGN	DRAWN	DATE	FILE	SHEET
5019-09	ICE	ICE	SEPT 22, 2011	PW# 2011-03	8

PAVING, DRAINAGE, & UTILITY IMPROVEMENTS - PONTE AVENUE CIRCLE