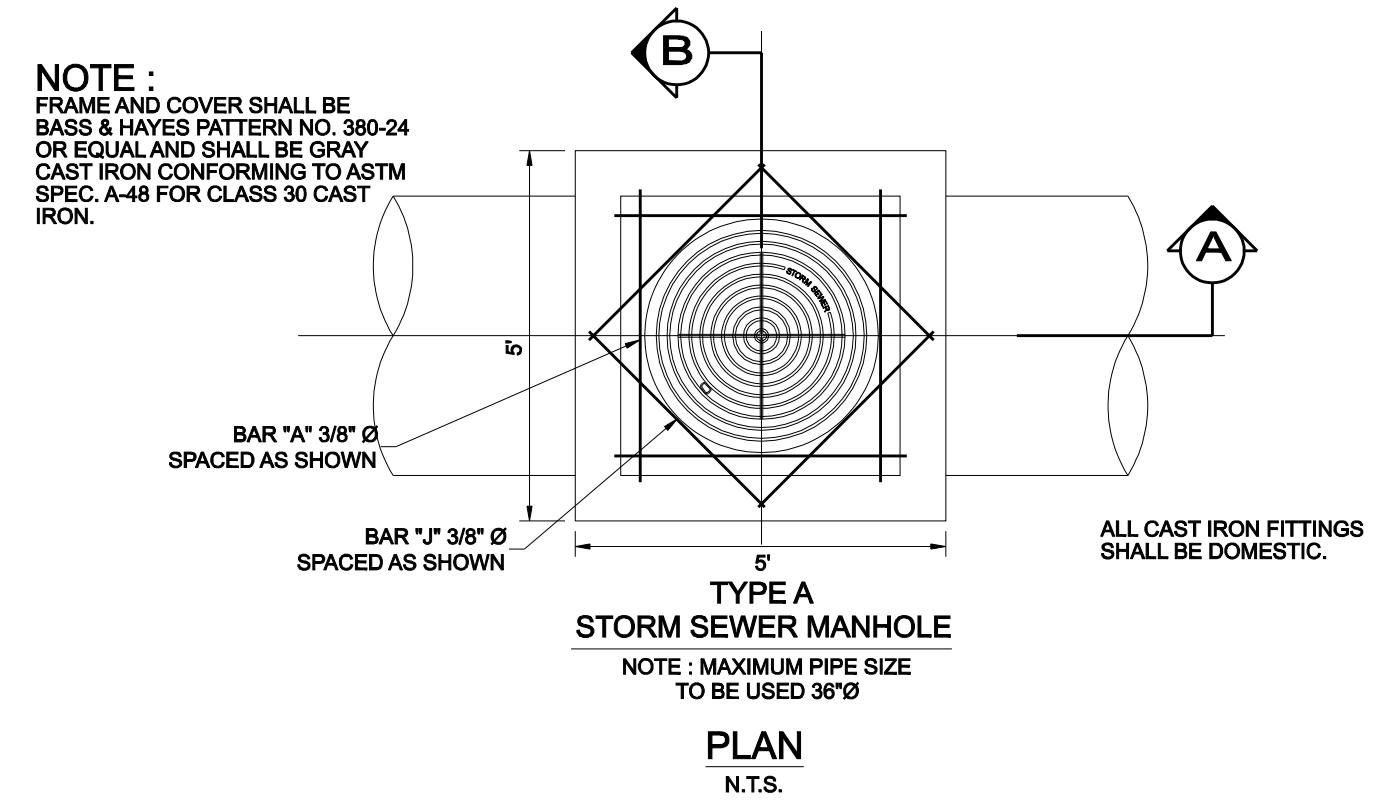
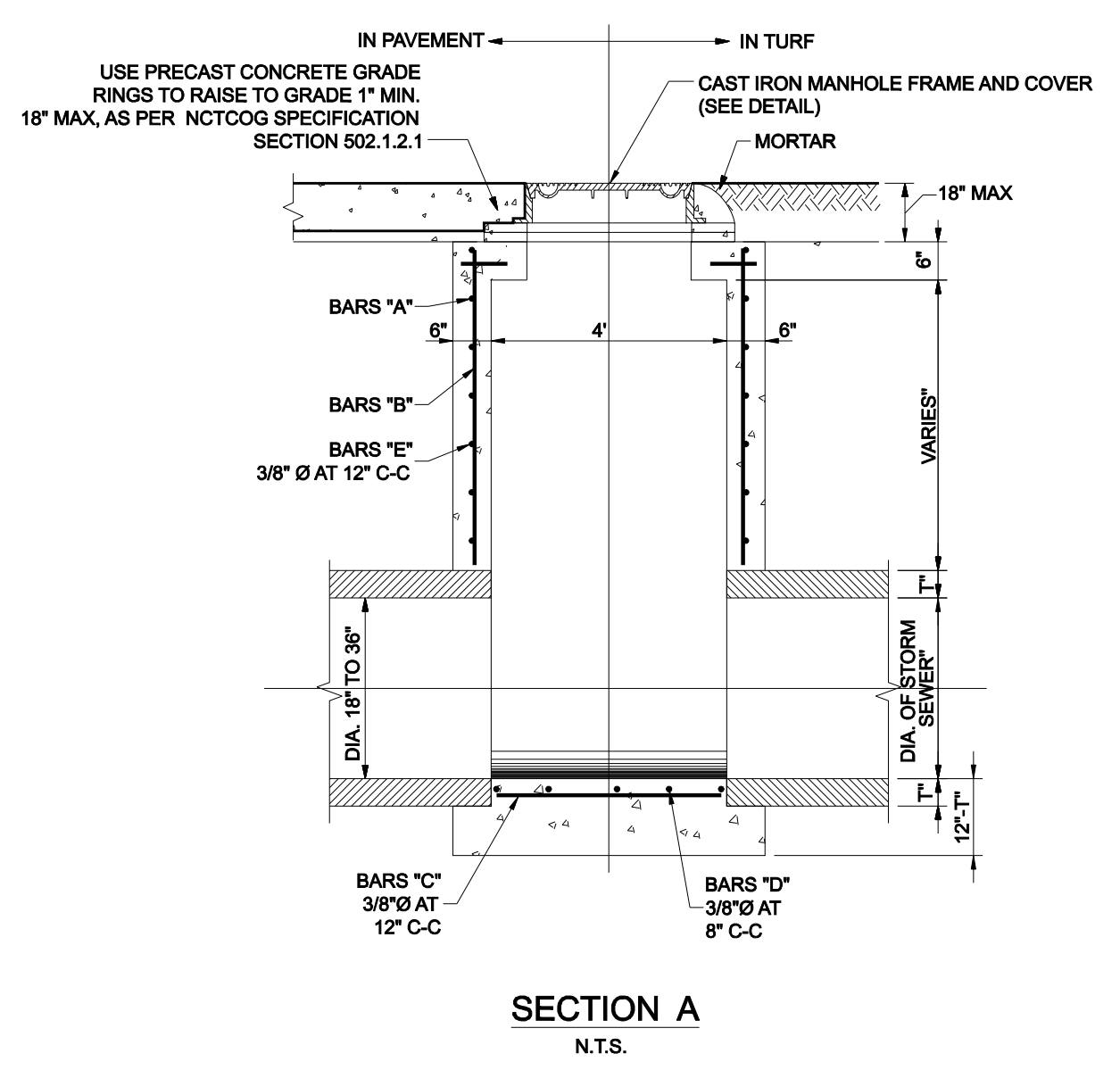


LOAD RATING HEAVY DUTY	COATING DIPPED	ESTIMATED WEIGHT COVER: 193 LBS FRAME: 151 LBS	MATERIAL SPECIFICATION COVER - GRAY IRON ASTM A48 CL35B FRAME - GRAY IRON ASTM A48 CL35B
---------------------------	-------------------	--	--

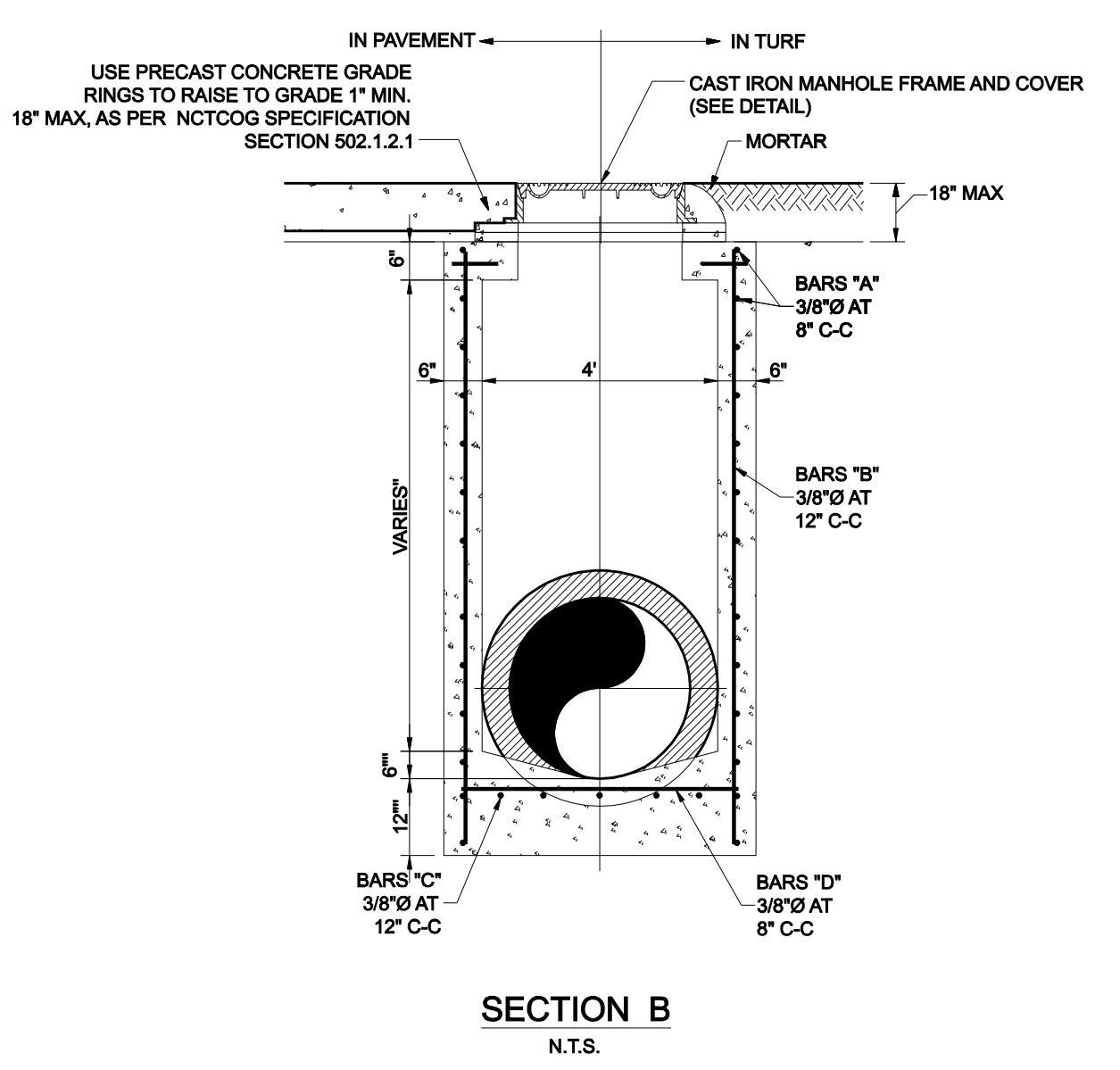
DESIGNATES MACHINE SURFACE
CAST IRON FRAME AND COVER



TYPE A STORM SEWER MANHOLE
NOTE: MAXIMUM PIPE SIZE TO BE USED 36" Ø
PLAN
N.T.S.

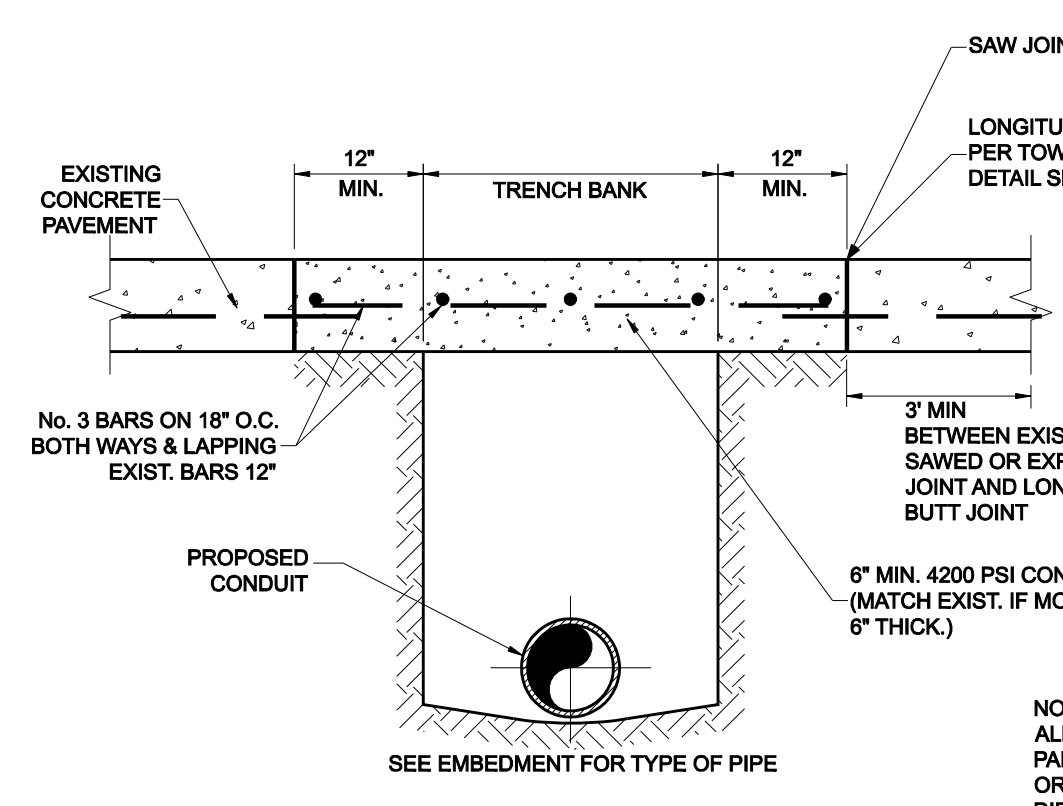


SECTION A
N.T.S.

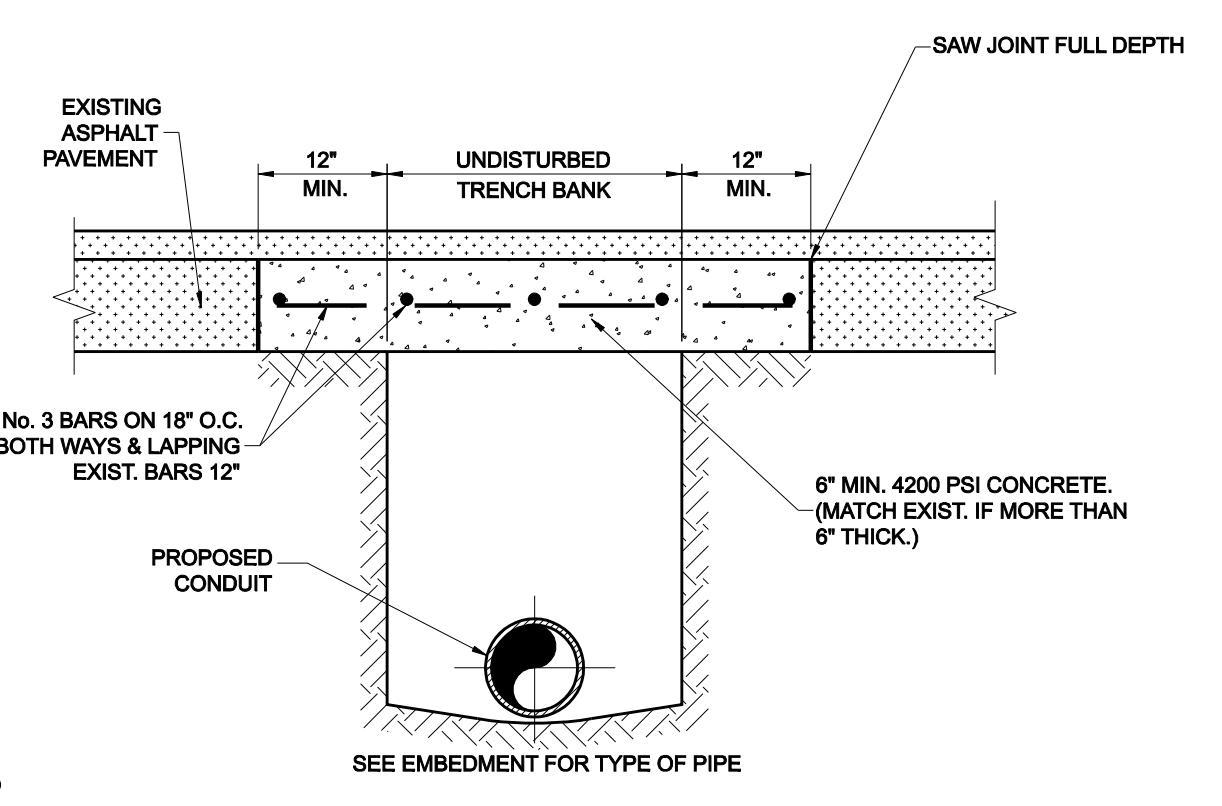


SECTION B
N.T.S.

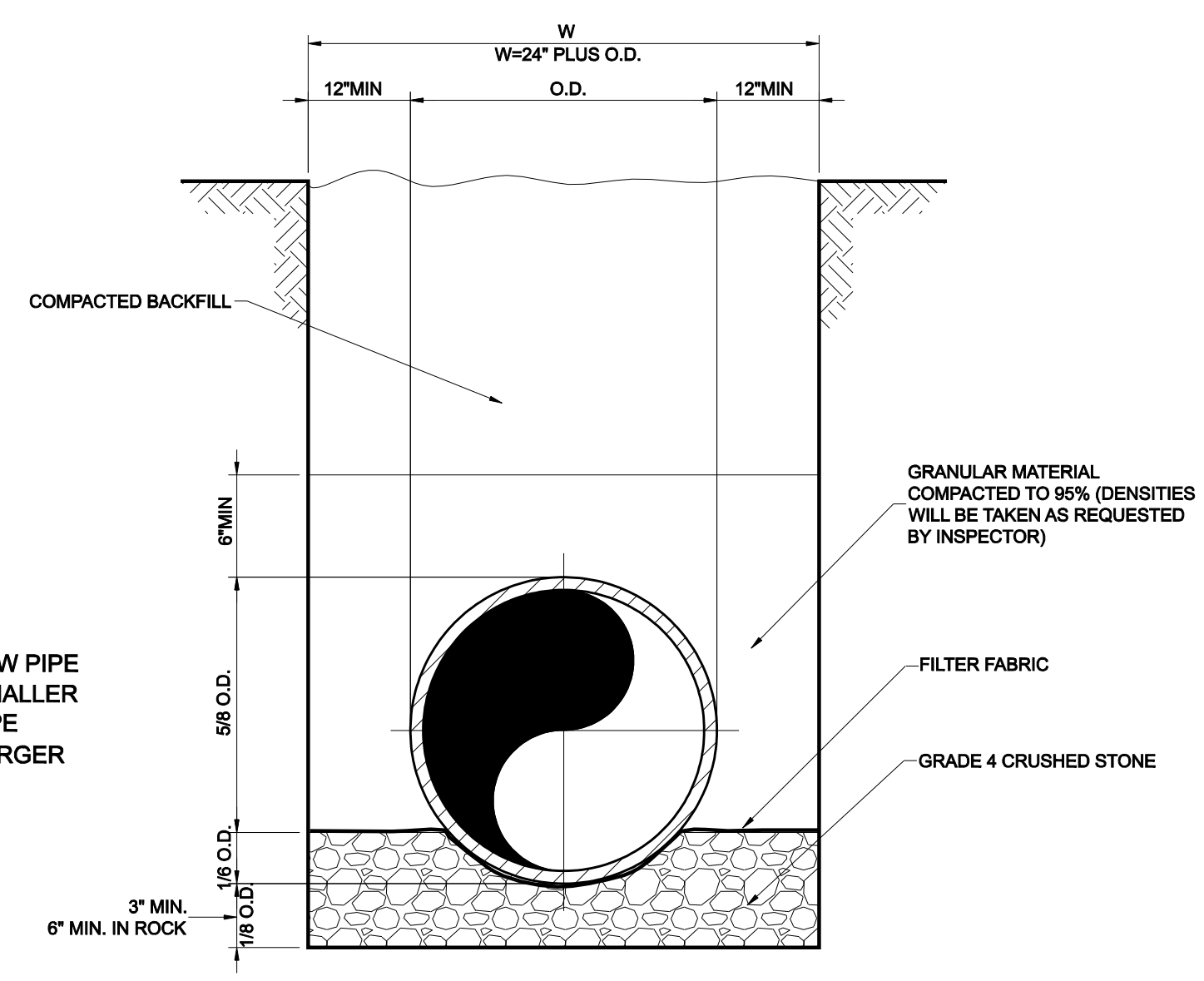
TYPE 'A' STORM DRAIN MANHOLE
N.T.S.



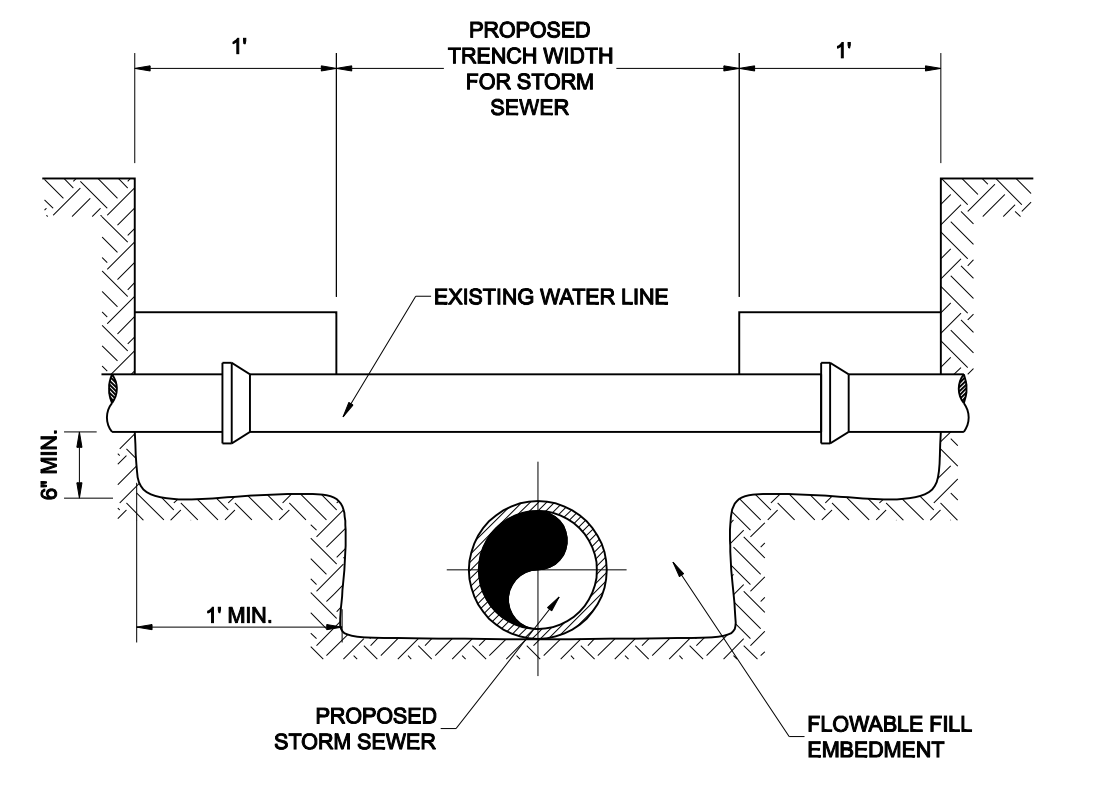
CONCRETE STREET OR DRIVEWAY REPAIR
N.T.S.



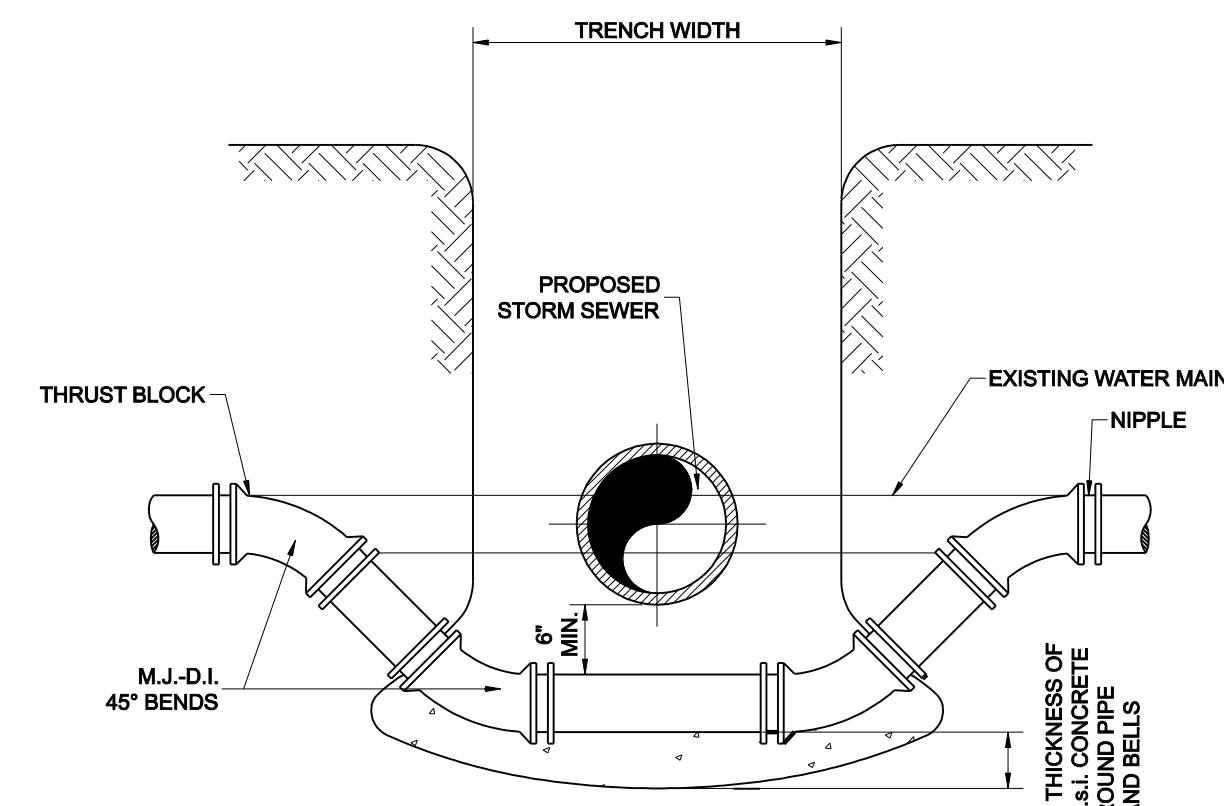
ASPHALT STREET OR DRIVEWAY REPAIR
N.T.S.



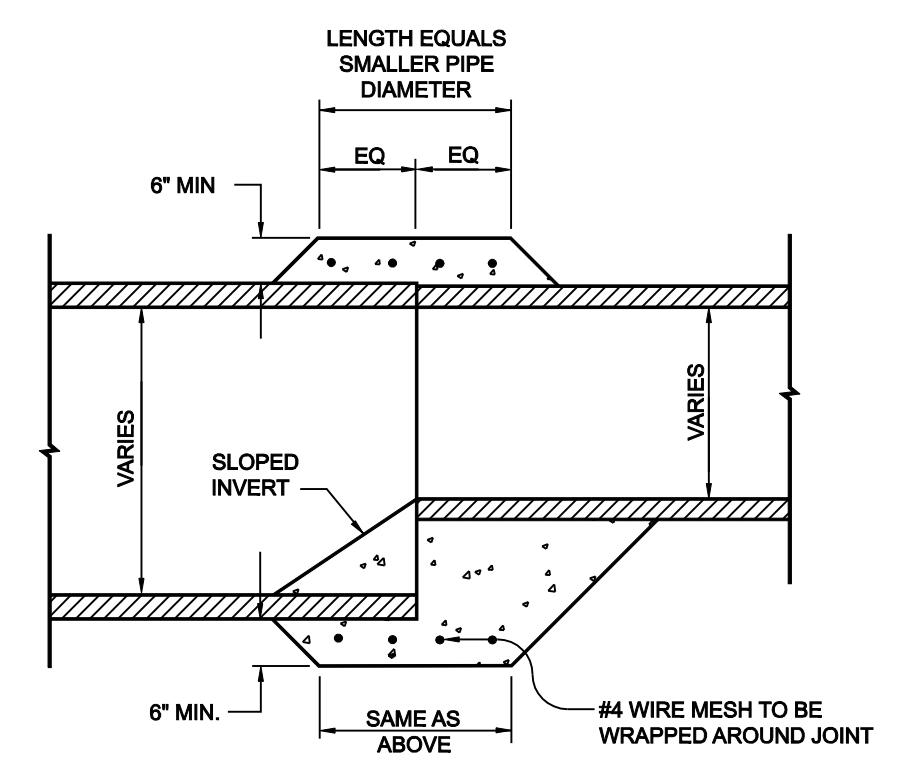
RCP STORM SEWER PIPE BEDDING



DETAIL OF UTILITY SUPPORT



DETAIL FOR WATER MAIN LOWERING



PIPE COLLAR DETAIL

- NOTES
1. THIS PROCEDURE/DETAIL WILL ONLY BE USED WHEN 1 PREFAB REDUCTION IS NOT POSSIBLE.
 2. CONCRETE FOR COLLAR WILL NOT BE PAID FOR DIRECTLY, BUT WILL BE CONSIDERED SUBSIDIARY TO THE VARIOUS OTHER BIDS.
 3. CONCRETE SHALL BE 5 SACK 3000 PSI.

GENERAL NOTES

1. ALL CONCRETE DRAINAGE STRUCTURES SHALL HAVE A MINIMUM COMPRESSED STRENGTH OF 3600 P.S.I.
2. ALL CRUSHED STONE SHALL BE 3/4", PASSING #4 SIEVE.
3. ALL FIELD JOINTS WILL BE APPROVED BY THE CITY ENGINEER IF NECESSARY. FIELD JOINTS SHALL BE WIPED ON THE INSIDE AND OUTSIDE TO PROVIDE FOR SMOOTH FLOW OF WATER.
4. RAMNECK COMPOUND OR APPROVED EQUAL SHALL BE USED FOR JOINT SEALS.
5. ALL STORM SEWER PIPE SHALL BE CAMERA INSPECTED AFTER THE INSTALLATION OF ALL PAVING, UTILITIES, AND PRIOR TO FINAL ACCEPTANCE OF THE PROJECT.



NO.		REVISION		BY		DATE	
TOWN OF ADDISON DALLAS COUNTY, TEXAS PAVING, DRAINAGE & UTILITY IMPROVEMENTS PONTE AVENUE CIRCLE STORM DRAIN DETAILS							
icon Consulting Engineers, Inc.		250 W. Southlake Blvd., Suite 117		Southlake, Tx 76092 (817) 552-6210			
PROJECT	DESIGN	DRAWN	DATE	FILE	SHEET		
5019-09	ICE	ICE	SEPT 22, 2011	PW# 2011-03	13		

PAVING, DRAINAGE, & UTILITY IMPROVEMENTS - PONTE AVENUE CIRCLE