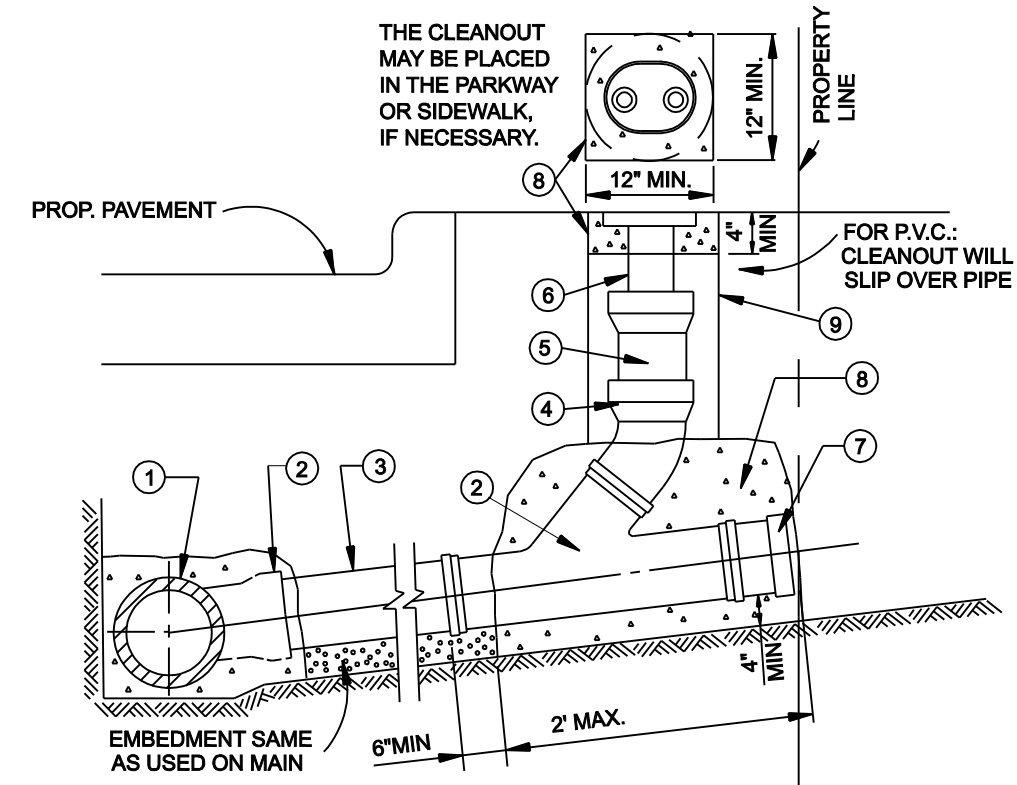


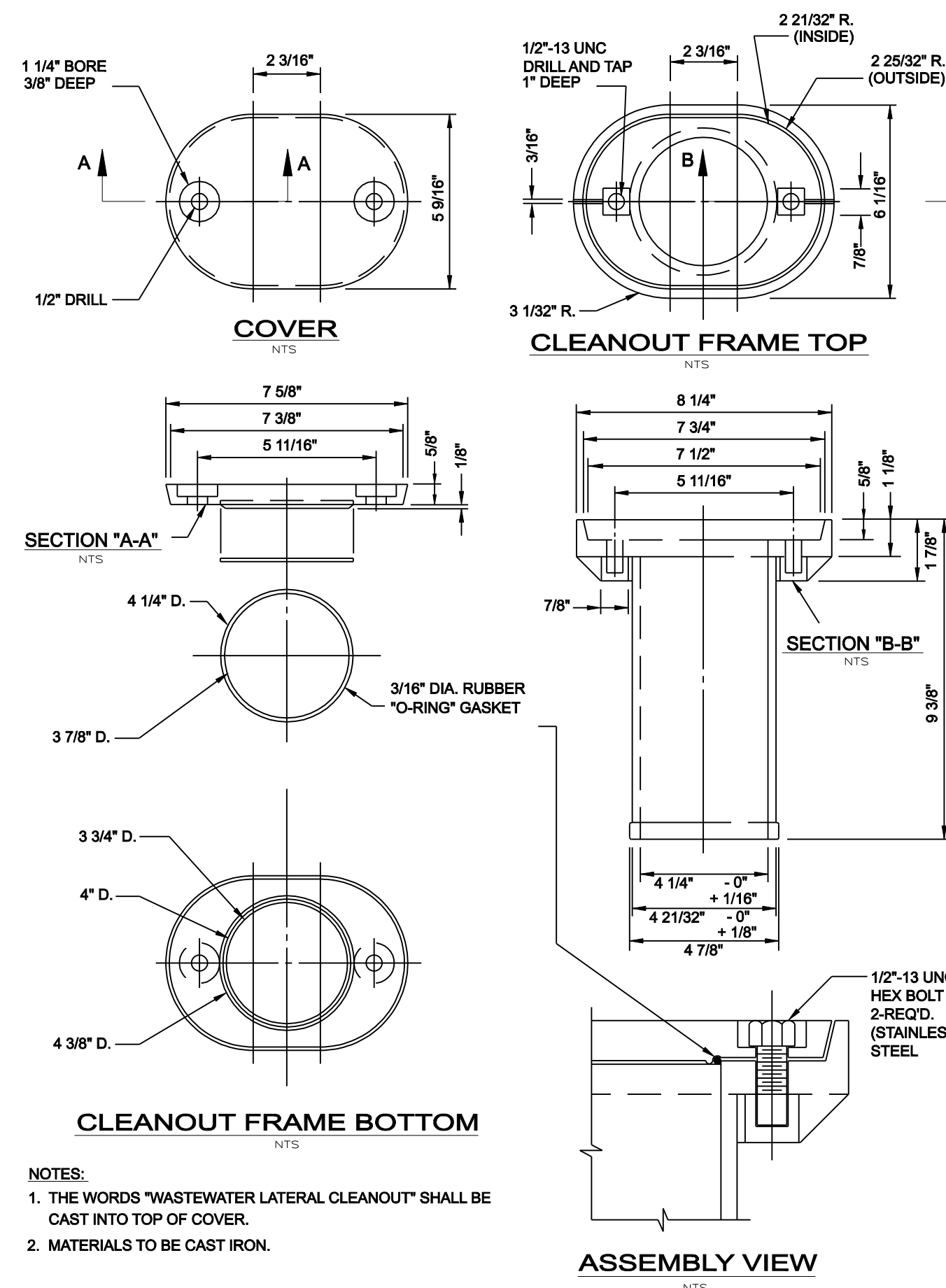
- KEY:
- ① WASTEWATER MAIN
 - ② WYE
 - ③ WASTEWATER LAT. (LENGTH VARIES)
 - ④ 4" LONG RADIUS 45° BEND
 - ⑤ 4" STACK (LENGTH VARIES)
 - ⑥ 4" WASTEWATER LAT. CLEANOUT CASTING

- ⑦ PLUG
- ⑧ CLASS "B" CONCRETE
- ⑨ COMPACTED AS SPECIFIED, OR INUNDATED SAND



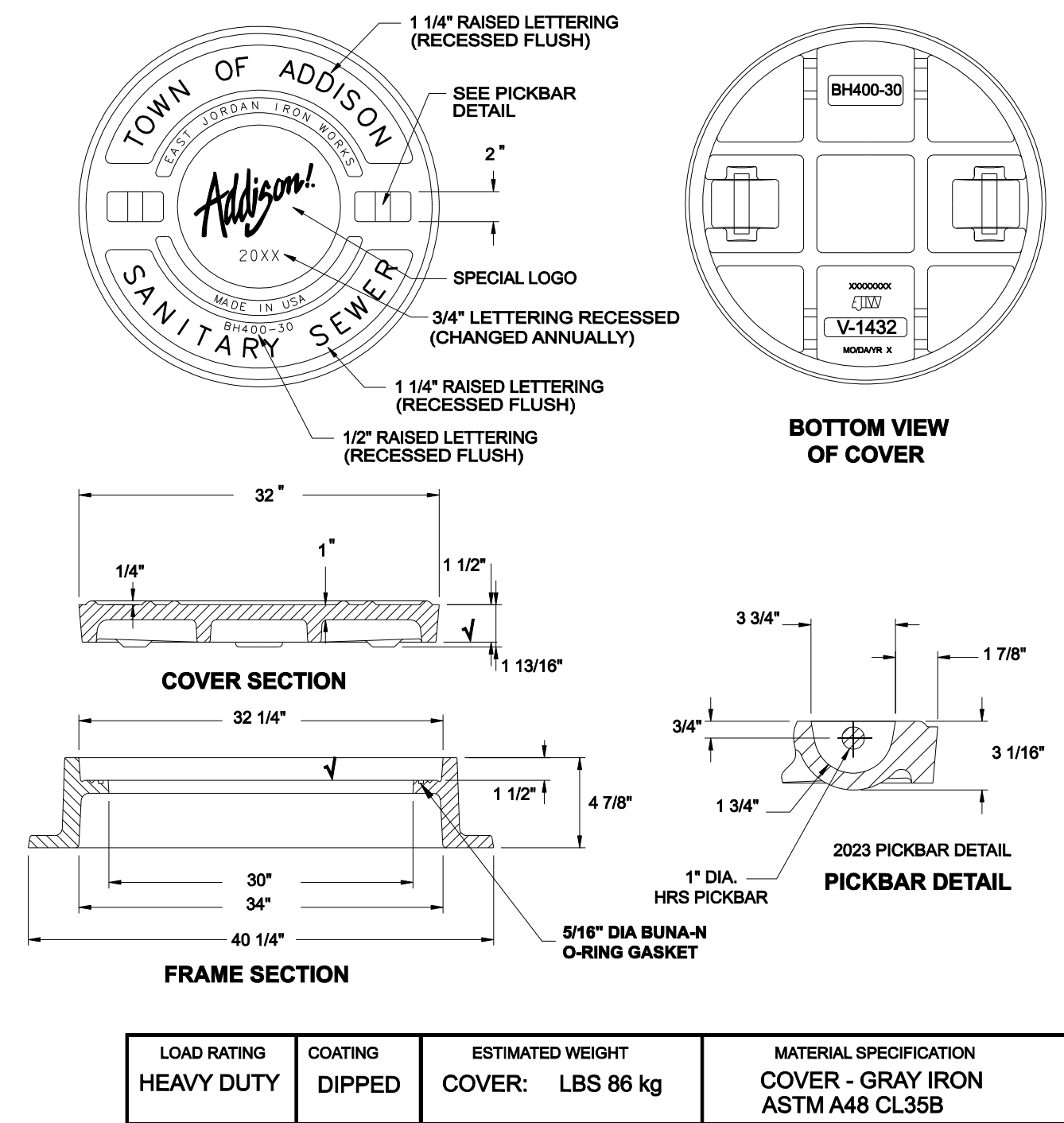
- NOTES:
- CLEANOUT CASTING TO BE FURNISHED AND PLACED PER SPECIAL CONDITIONS. IN VEHICLE TRAFFIC AREAS AND FOR COMMERCIAL MAINLINE LATERALS, WASTEWATER CLEANOUT SHALL BE OF CAST IRON.
 - SLOPE OF LATERAL TO BE 1% MIN., 2% MAX. UNLESS SHOWN OTHERWISE ON THE PLAN & PROFILE.
 - THE CLEANOUT STACK & CASTING MAY BE PLACED IN THE PARKWAY, VEHICLE TRAFFIC AREAS, OR SIDEWALK, IF NECESSARY.

SANITARY SEWER LATERAL CLEANOUT



- NOTES:
- THE WORDS "WASTEWATER LATERAL CLEANOUT" SHALL BE CAST INTO TOP OF COVER.
 - MATERIALS TO BE CAST IRON.

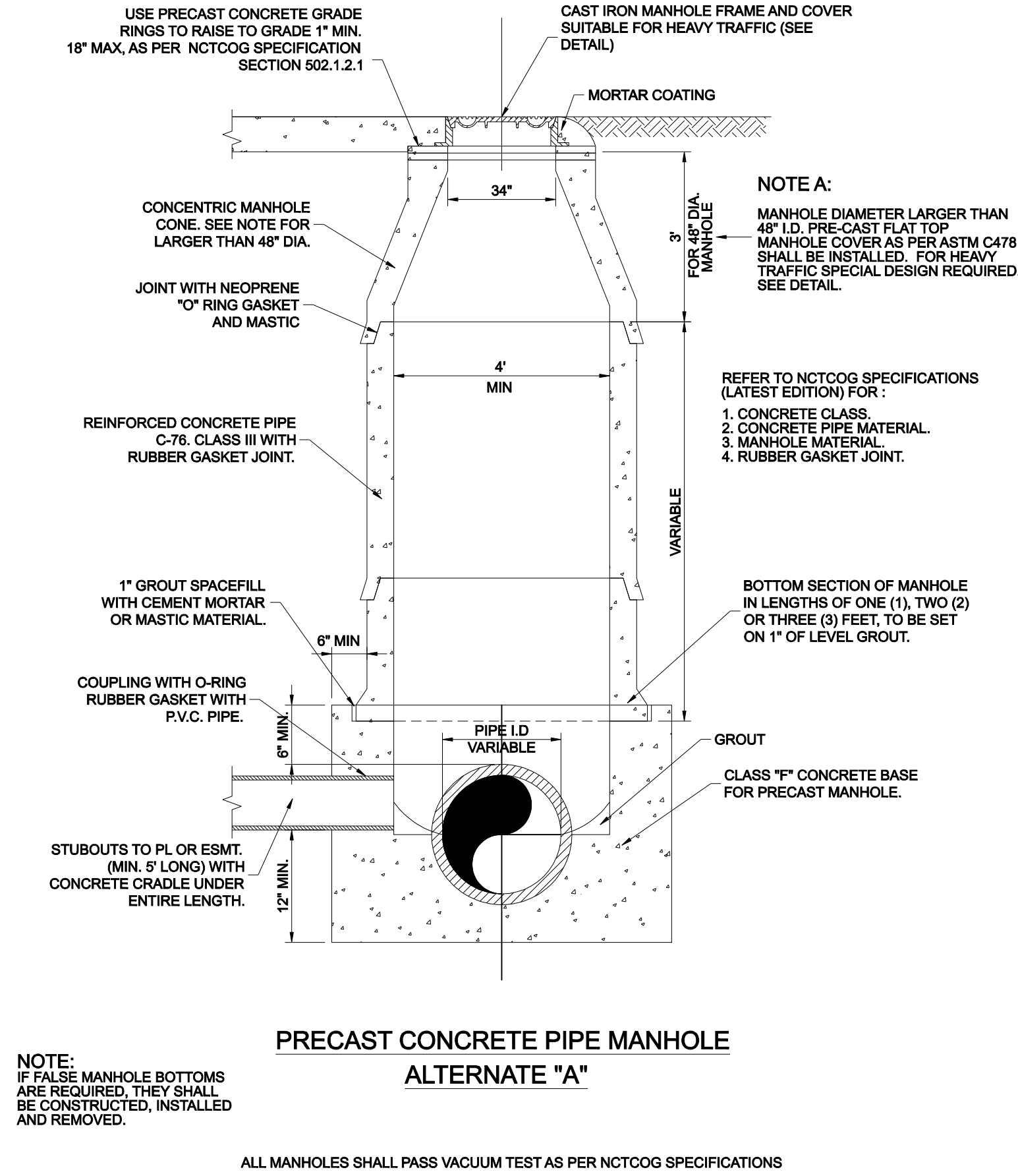
SANITARY SEWER LATERAL CLEANOUT FRAME & COVER



LOAD RATING	COATING	ESTIMATED WEIGHT	MATERIAL SPECIFICATION
HEAVY DUTY	DIPPED	COVER: LBS 86 kg	COVER - GRAY IRON ASTM A48 CL35B

√ DESIGNATES MACHINE SURFACE

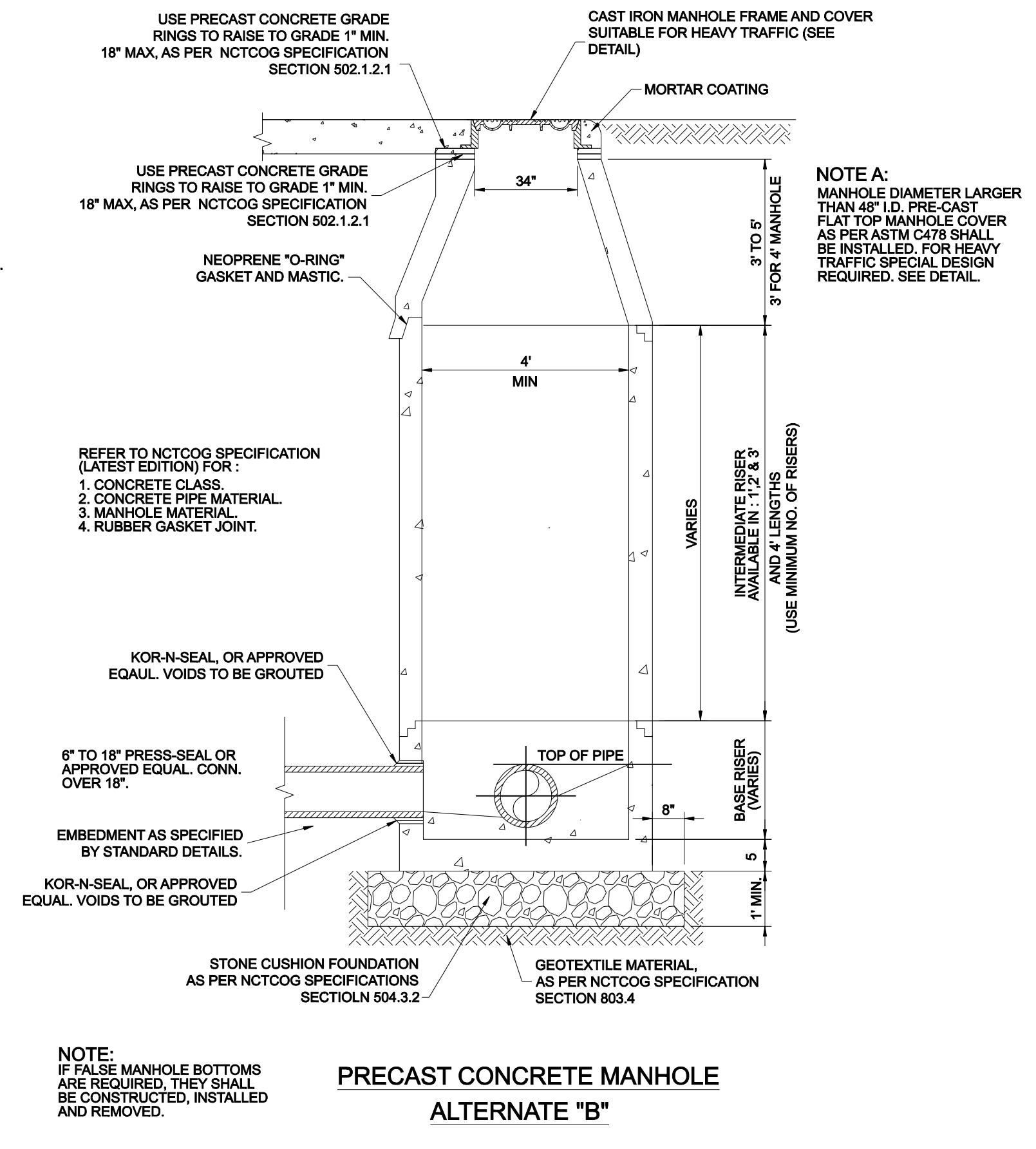
CAST IRON FRAME AND COVER



- NOTE:
- IF FALSE MANHOLE BOTTOMS ARE REQUIRED, THEY SHALL BE CONSTRUCTED, INSTALLED AND REMOVED.

PRECAST CONCRETE PIPE MANHOLE ALTERNATE "A"

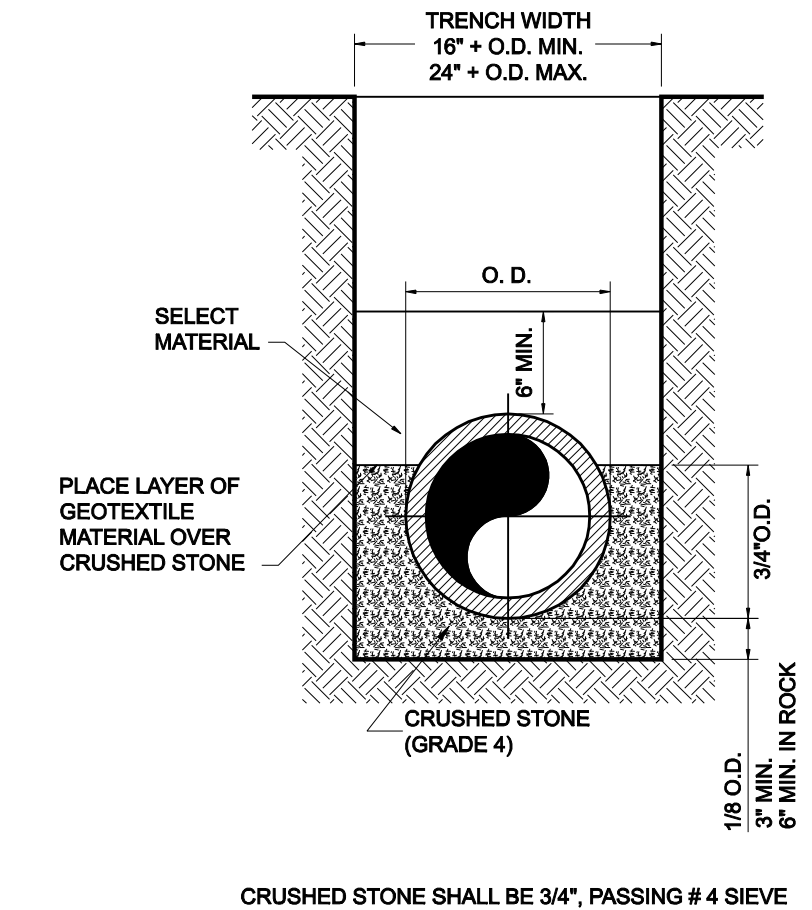
ALL MANHOLES SHALL PASS VACUUM TEST AS PER NCTCOG SPECIFICATIONS



- NOTE:
- IF FALSE MANHOLE BOTTOMS ARE REQUIRED, THEY SHALL BE CONSTRUCTED, INSTALLED AND REMOVED.

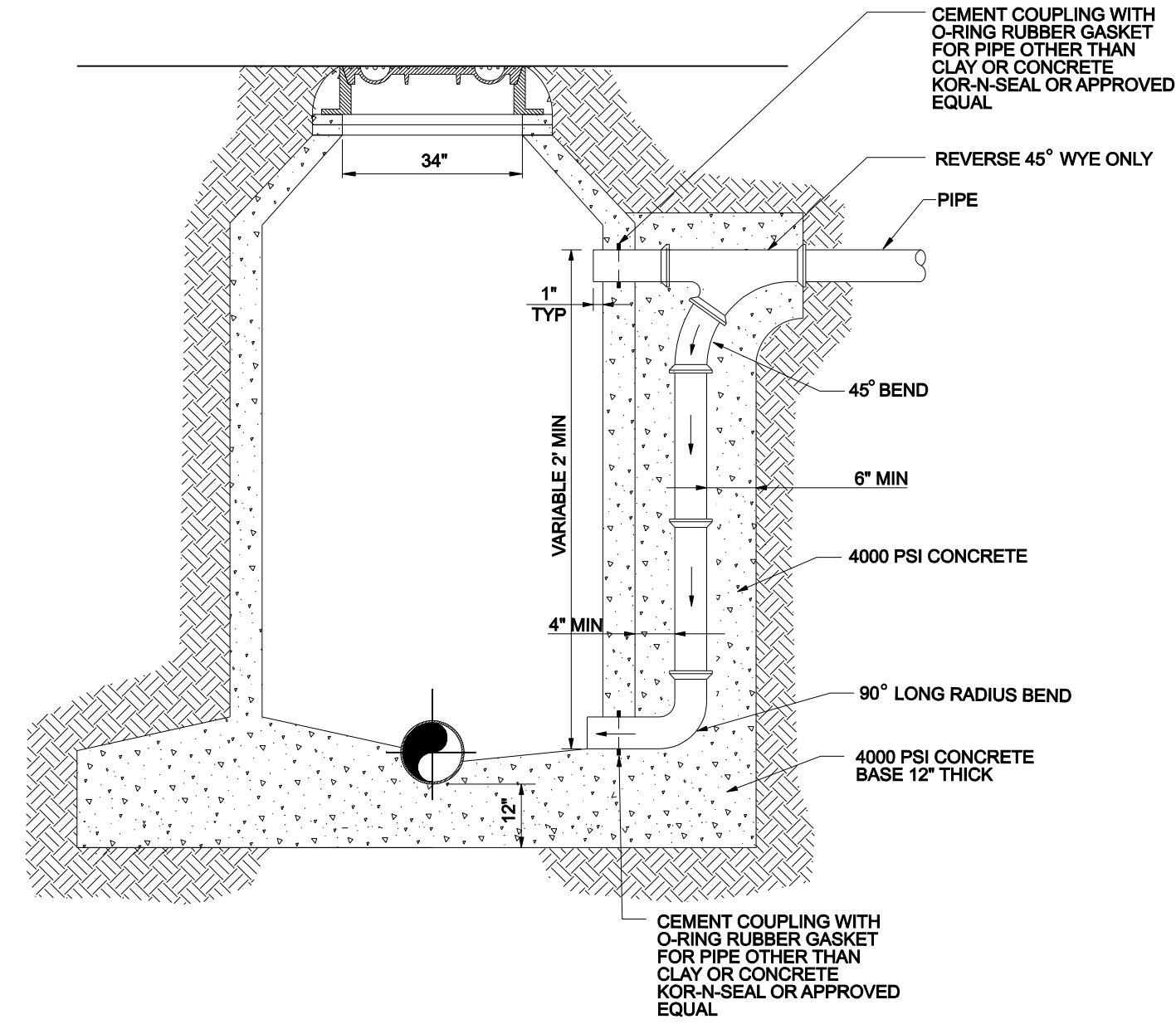
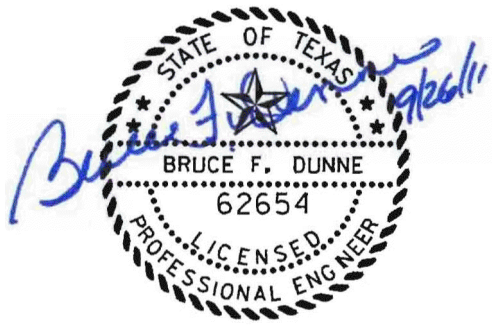
PRECAST CONCRETE MANHOLE ALTERNATE "B"

ALL MANHOLES SHALL PASS VACUUM TEST AS PER NCTCOG SPECIFICATIONS



CRUSHED STONE SHALL BE 3/4", PASSING # 4 SIEVE

CLASS "B+" EMBEDMENT
TYPICAL BACKFILL WATER MAIN P.V.C. WATER PIPE



EXTERIOR MANHOLE DROP CONNECTION

NO.		REVISION		BY		DATE	
TOWN OF ADDISON DALLAS COUNTY, TEXAS PAVING, DRAINAGE & UTILITY IMPROVEMENTS PONTE AVENUE CIRCLE SANITARY SEWER DETAILS							
icon Consulting Engineers, Inc. 250 W. Southlake Blvd., Suite 117 Civil Engineers - Designers - Planners Southlake, Tx 76092 (817) 552-6210							
PROJECT	DESIGN	DRAWN	DATE	FILE	SHEET		
5019-09	ICE	ICE	SEPT 22, 2011	PW# 2011-03	24		

PAVING, DRAINAGE, & UTILITY IMPROVEMENTS - PONTE AVENUE CIRCLE