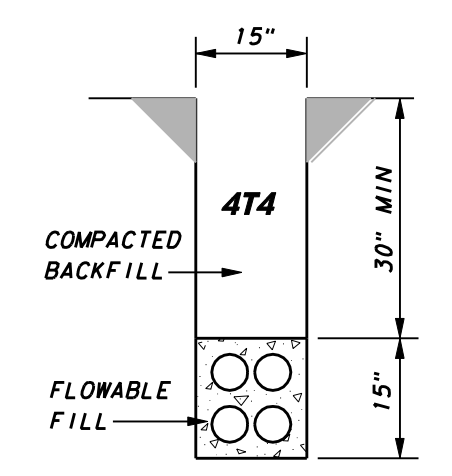
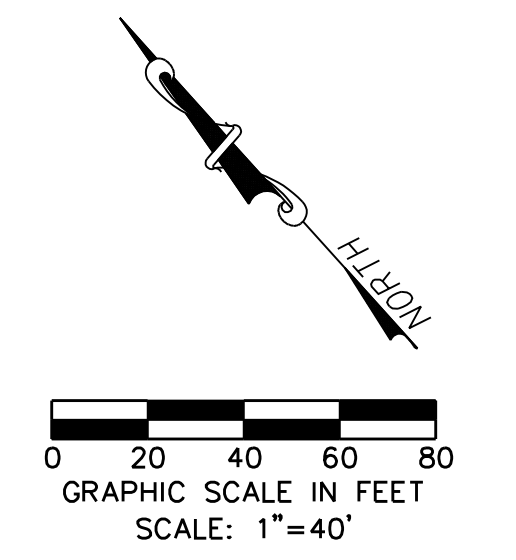


NO	DELTA	RADIUS	LENGTH
1	41° 02' 34"	100.00'	71.63'
2	48° 57' 26"	78.67'	67.22'



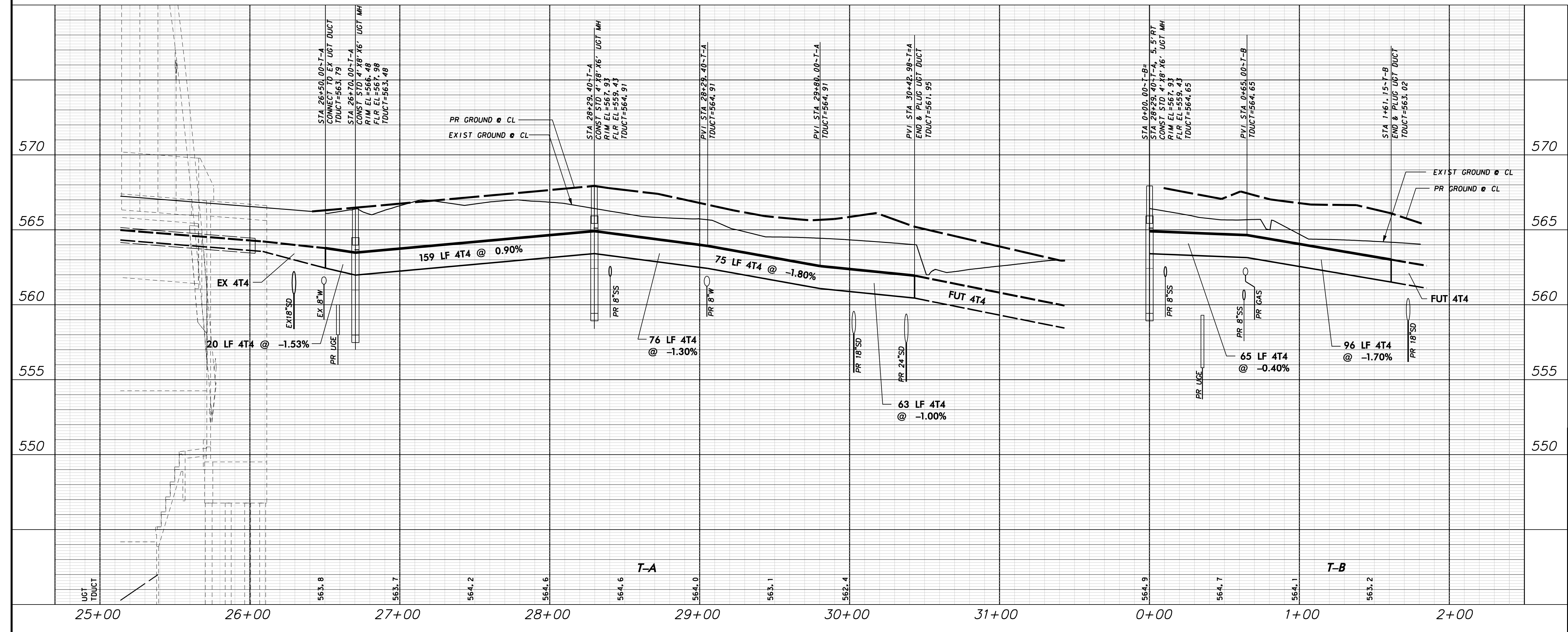
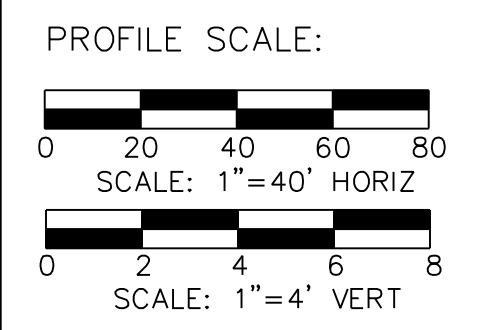
NOTE:  
1. SEE OVERALL DUCT BANK PLAN LAYOUT SHEET FOR UGE AND UGT GENERAL NOTES.

**WARNING**

CONTRACTOR IS TO CONTACT TEXAS ONE-CALL SYSTEM (1-800-245-4545) OR OTHER UTILITY LOCATING SERVICES AT LEAST 48 HOURS PRIOR TO CONSTRUCTION ACTIVITIES. ICON CONSULTING ENGINEERS, INC. IS NOT RESPONSIBLE FOR KNOWING ALL EXISTING UTILITIES IN THE PROJECT AREA NOR FOR DEPICTING THE EXACT LOCATIONS OF UTILITIES ON THESE DRAWINGS.

BM #1 REF. ELEVATION = 559.47  
SQUARE CUT IN TOP OF CURB, SOUTH MEDIAN END NOSE, MARSH LANE  
1127' NORTH OF VITRUVIAN WAY.

BM #2 REF. ELEVATION = 547.84  
SQUARE CUT IN TOP OF CURB, NORTH MEDIAN END NOSE, AT INTERSECTION OF VITRUVIAN WAY AND MARSH LANE.



NO.	REVISION	BY	DATE
<b>TOWN OF ADDISON</b> DALLAS COUNTY, TEXAS			
<b>PAVING, DRAINAGE &amp; UTILITY IMPROVEMENTS</b> PONTE AVENUE CIRCLE			
<b>DUCT BANK PLAN &amp; PROFILE</b> TELEPHONE			
<b>Consulting Engineers, Inc.</b> Civil Engineers - Designers - Planners			
250 W. Southlake Blvd., Suite 117		Southlake, TX 76092 (817) 552-6210	
PROJECT	DESIGN	DRAWN	DATE
5019-09	ICE	ICE	SEPT 22, 2011
FILE	SHEET		
PW# 2011-03	26		

PAVING, DRAINAGE, & UTILITY IMPROVEMENTS - PONTE AVENUE CIRCLE