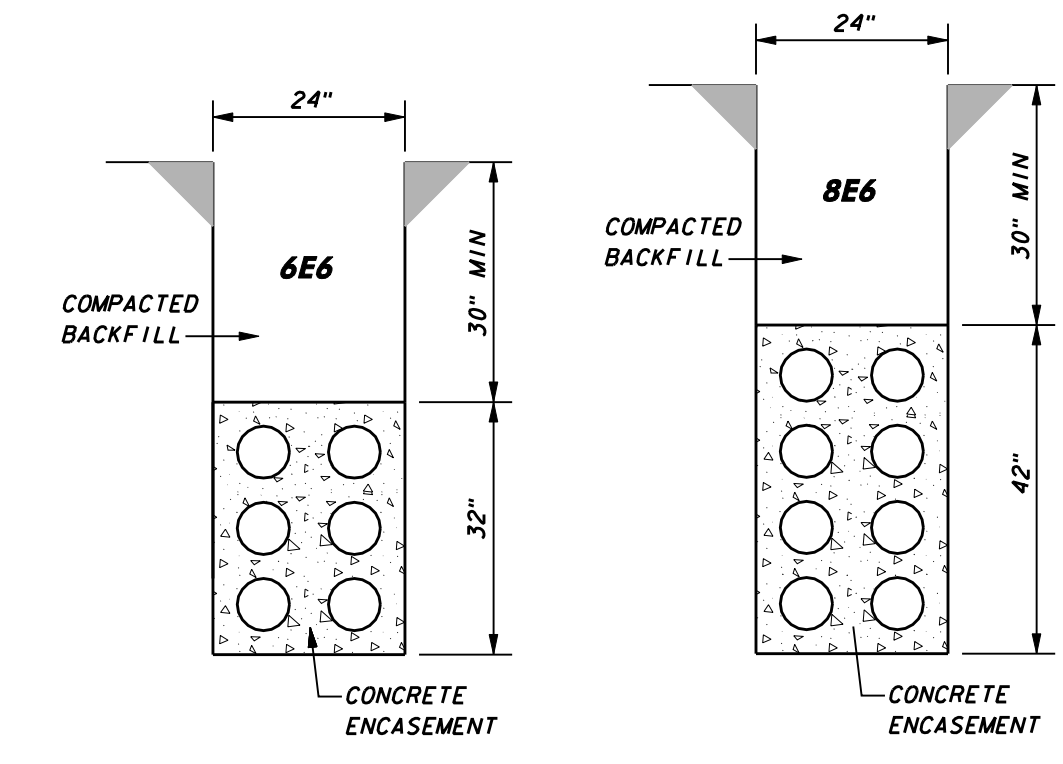
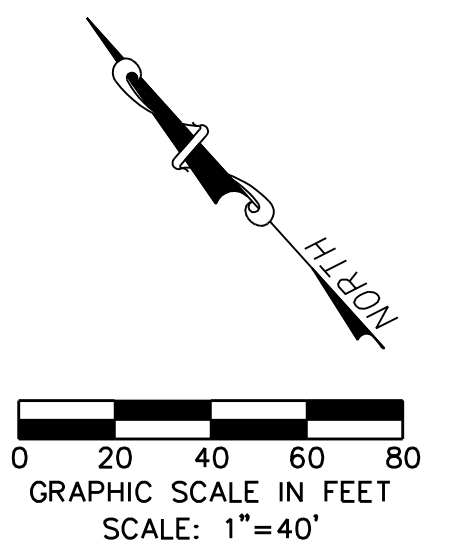


NO	DELTA	RADIUS	LENGTH
1	41° 02' 34"	100.00'	71.63'
2	06° 24' 55"	365.31'	40.90'



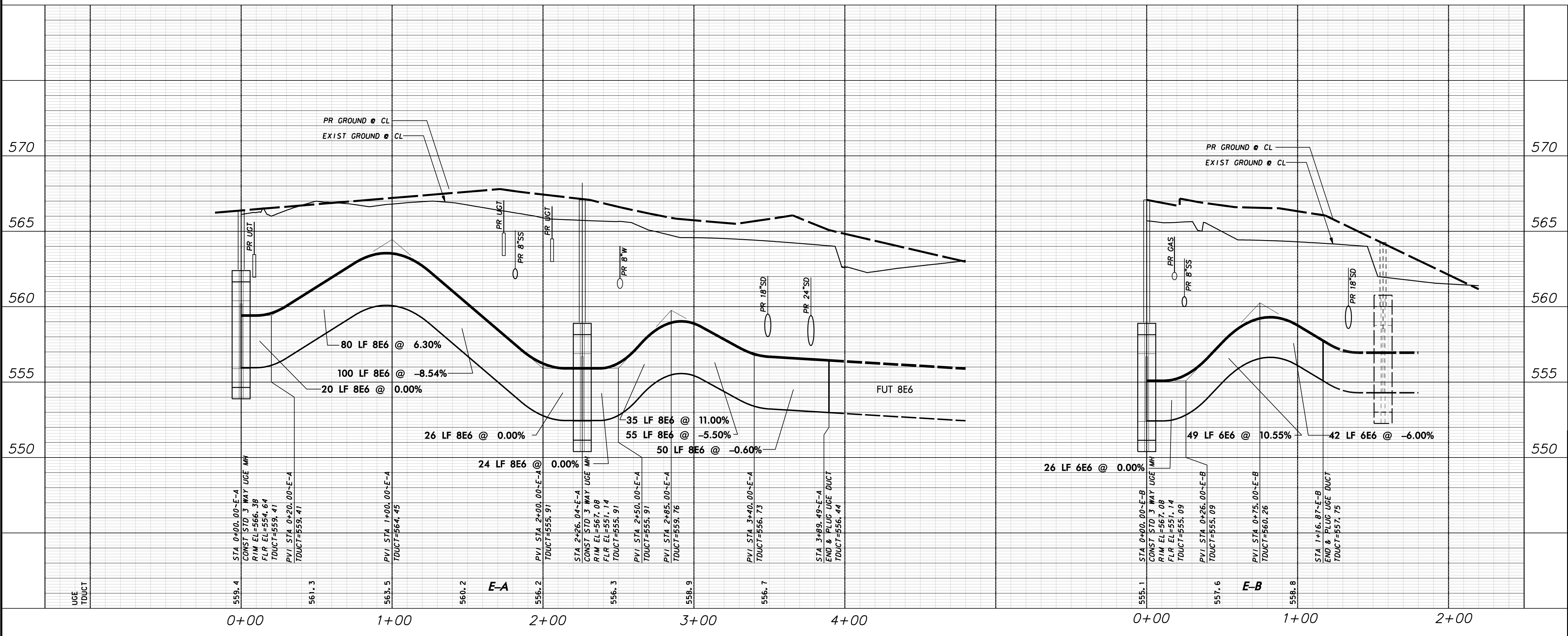
NOTE:  
1. SEE OVERALL DUCT BANK PLAN LAYOUT SHEET FOR UGE AND UGT GENERAL NOTES.

**WARNING**

CONTRACTOR IS TO CONTACT TEXAS ONE-CALL SYSTEM (1-800-245-4545) OR OTHER UTILITY LOCATING SERVICES AT LEAST 48 HOURS PRIOR TO CONSTRUCTION ACTIVITIES. ICON CONSULTING ENGINEERS, INC. IS NOT RESPONSIBLE FOR KNOWING ALL EXISTING UTILITIES IN THE PROJECT AREA NOR FOR DEPICTING THE EXACT LOCATIONS OF UTILITIES ON THESE DRAWINGS.

BM #1 REF. ELEVATION = 559.47  
 SQUARE CUT IN TOP OF CURB, SOUTH MEDIAN END NOSE, MARSH LANE  
 1127' NORTH OF VITRUVIAN WAY.  
 BM #2 REF. ELEVATION = 547.84  
 SQUARE CUT IN TOP OF CURB, NORTH MEDIAN END NOSE, AT INTERSECTION OF VITRUVIAN WAY AND MARSH LANE.

PROFILE SCALE:  
 0 20 40 60 80  
 SCALE: 1"=40' HORIZ  
 0 2 4 6 8  
 SCALE: 1"=4' VERT



NO.	REVISION	BY	DATE

**Addison!** TOWN OF ADDISON  
 DALLAS COUNTY, TEXAS

PAVING, DRAINAGE & UTILITY IMPROVEMENTS  
 PONTE AVENUE CIRCLE

**DUCT BANK PLAN & PROFILE  
 ELECTRIC**

**icon** Consulting Engineers, Inc. 250 W. Southlake Blvd., Suite 117  
 Civil Engineers - Designers - Planners Southlake, Tx 76092 (817) 552-6210

PROJECT	DESIGN	DRAWN	DATE	FILE	SHEET
5019-09	ICE	ICE	SEPT 22, 2011	PW# 2011-03	27