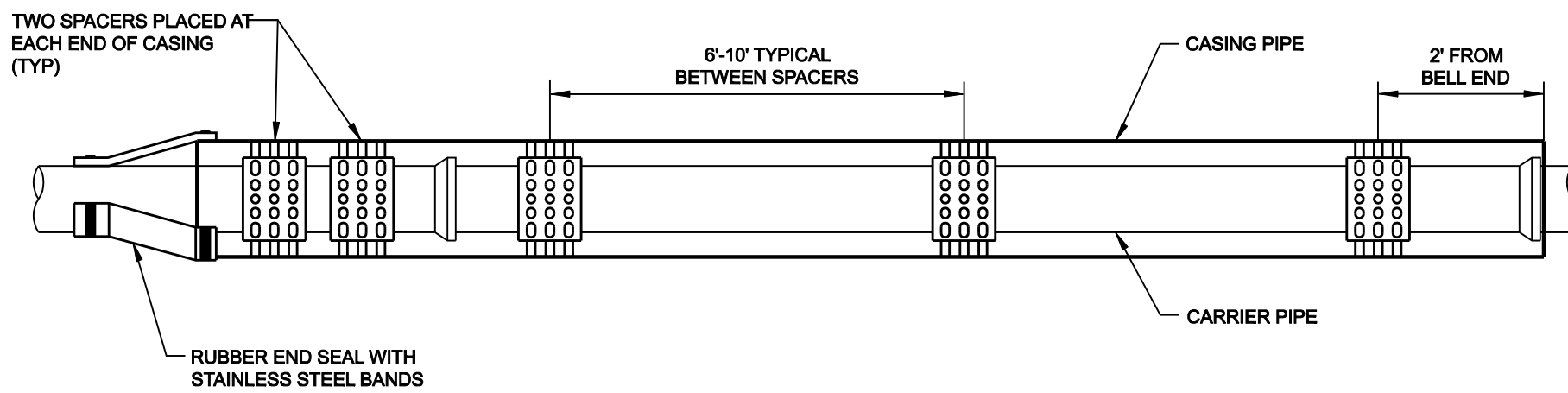


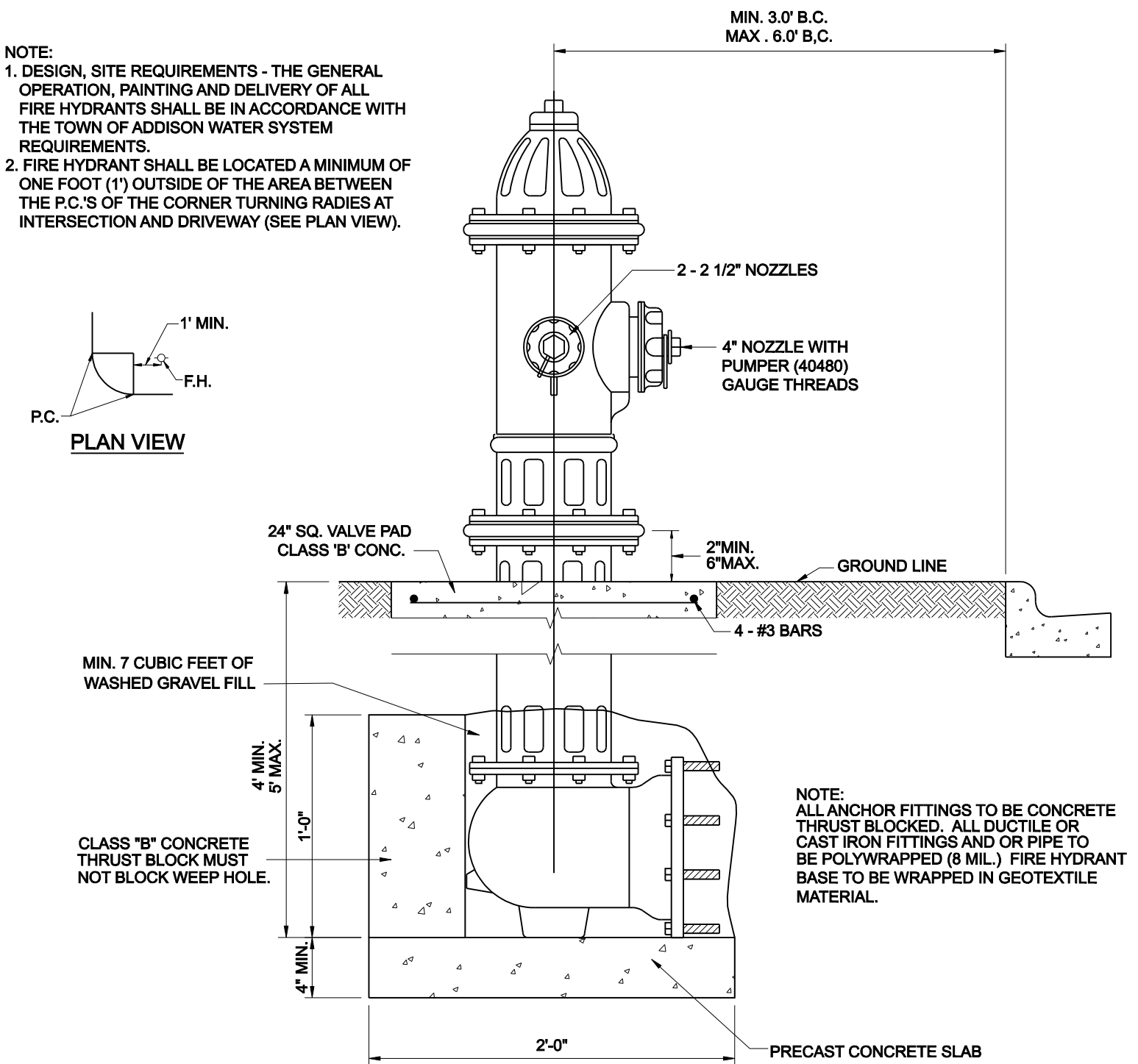
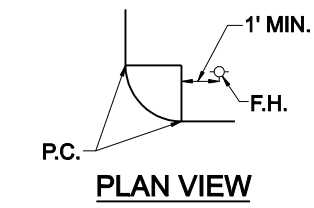
NOTES:
 (1) HIGH DENSITY POLYETHYLENE SPACERS, RACI OR EQUAL, SHALL BE USED. WHERE NO CASING PIPE IS REQUIRED OVERCUTTING AROUND UTILITY SHALL BE FILLED WITH HYDRAULICALLY PLACED NON-SHRINK GROUT AS PER ASTM C476.
 (2) END GROUTING FOR ALL ENCASEMENTS SHALL BE AS PER ASTM STANDARD C476 (1:7 GROUT WITH 5% TO 40% AIR ENTRAINMENT). GROUT SHALL BE PLACED BY HYDRAULIC PUMP FROM THE LOWER END OF THE ENCASEMENT PIPE, THEREBY INSURING COMPLETE FILLING OF ENCASEMENT PIPE.
 (3) ENCASEMENT PIPE SHALL BE EITHER DUCTILE IRON PIPE OR HIGH DENSITY STEEL PIPE. ALL JOINTS TO BE WELDED 100%.



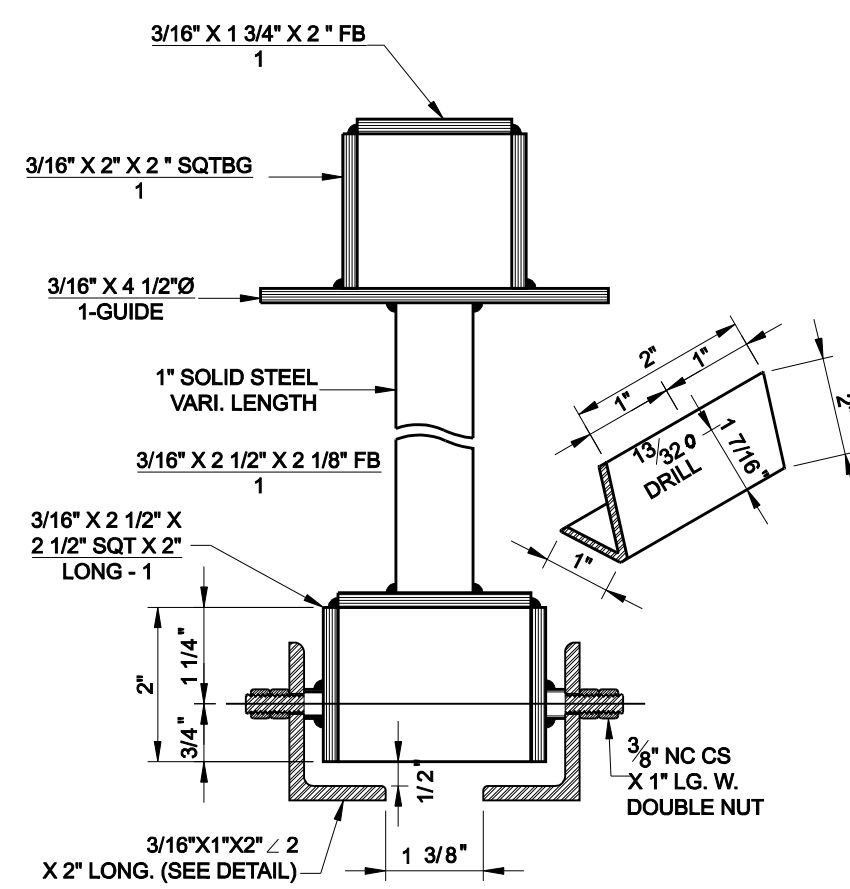
INSULATOR SPACING DETAIL

WATER OR WASTEWATER CASING

NOTE:
 1. DESIGN, SITE REQUIREMENTS - THE GENERAL OPERATION, PAINTING AND DELIVERY OF ALL FIRE HYDRANTS SHALL BE IN ACCORDANCE WITH THE TOWN OF ADDISON WATER SYSTEM REQUIREMENTS.
 2. FIRE HYDRANT SHALL BE LOCATED A MINIMUM OF ONE FOOT (1') OUTSIDE OF THE AREA BETWEEN THE P.C.'S OF THE CORNER TURNING RADIES AT INTERSECTION AND DRIVEWAY (SEE PLAN VIEW).

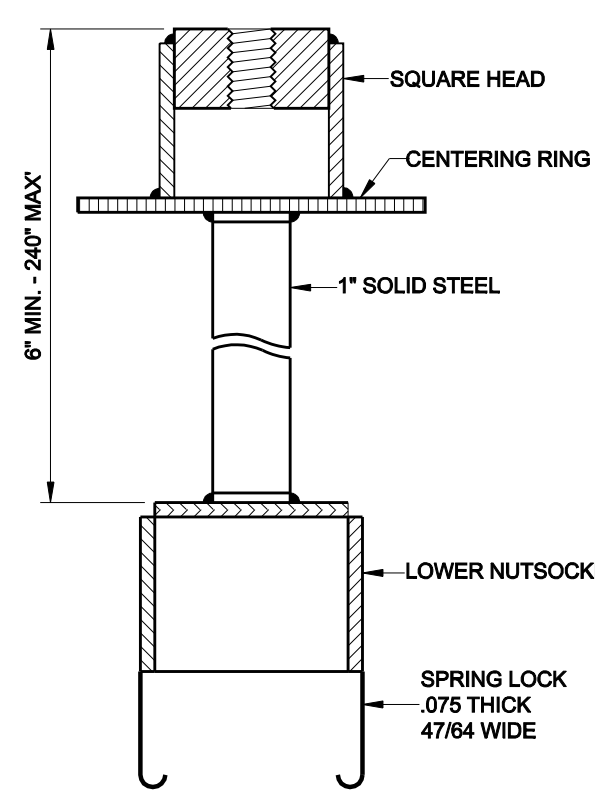


TYPICAL FIRE HYDRANT INSTALLATION

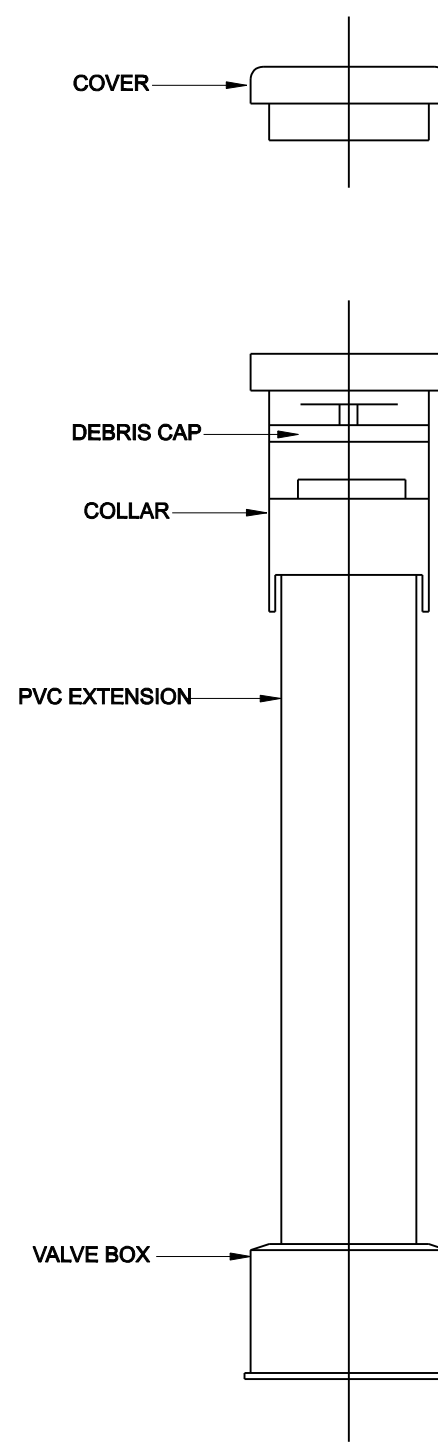


NOTE: TO BE USED ON ALL VALVES DEEPER THAN 5'-0".

TYPE - B VALVE EXTENSION

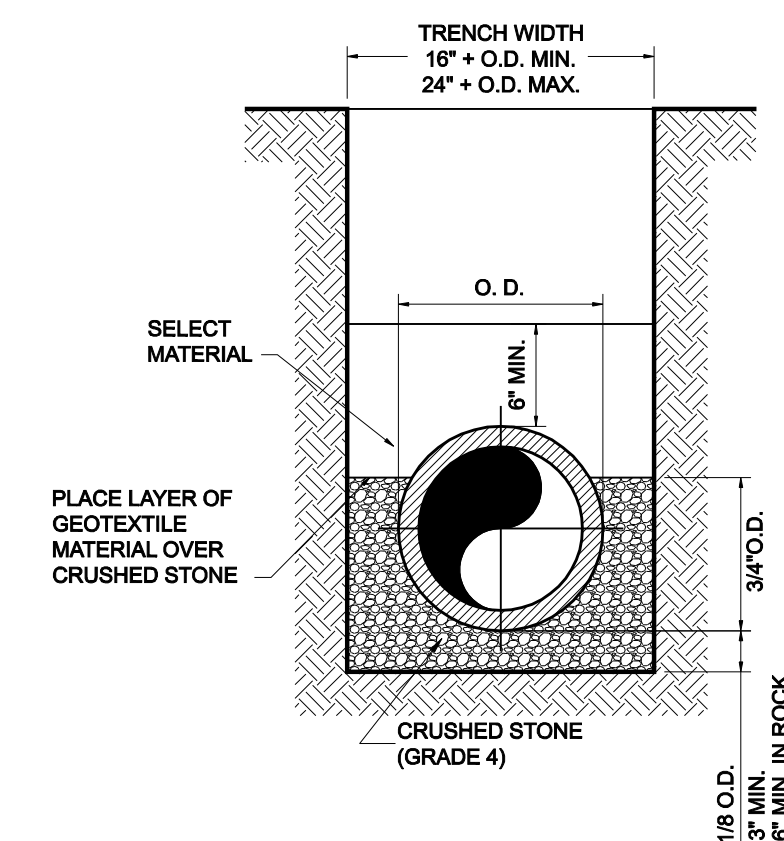


SPRING LOCK VALVE EXTENSION



TYPICAL VALVE SETTING & BOX

NOTE:
 1. 4"-12" R.S. GATE VALVES SHALL BE IN ACCORDANCE WITH TOWN OF ADDISON WATER SYSTEM REQUIREMENTS AND AWWA STD C509. ALL VALVES SHALL BE MUELLER OR APPROVED EQUAL.
 2. A PERMANENTLY ATTACHED VALVE EXTENSION STEM SHALL BE REQUIRED FOR ANY VALVE THAT'S OPERATING NUT IS LOCATED IN EXCESS OF 5 FEET BELOW THE TOP OF VALVE BOX. THIS EXTENSION SHALL BE OF SUFFICIENT LENGTH TO INSURE THAT ITS TOP IS WITHIN 5 FEET OF VALVE BOX LID.
 3. BLUE DOT (3") ON NEAREST CURB FACE TO VALVE.
 4. ALL IRON MATERIALS SHALL BE DOMESTIC.



CLASS "B+" EMBEDMENT TYPICAL BACKFILL WATER MAIN P.V.C. WATER PIPE



NO.	REVISION	BY	DATE
icon Consulting Engineers, Inc. 2840 W. Southlake Blvd., Suite 110 Civil Engineers - Designers - Planners Southlake, Tx 76092 (817) 552-6210 Engineering Firm Registration Number F-9007			
PAVING, DRAINAGE & UTILITY IMPROVEMENTS VITRUVIAN PARK PUBLIC INFRASTRUCTURE BLOCK 200 TOWN OF ADDISON, TEXAS WATER DETAILS			
DESIGN	DRAWN	DATE	SCALE
ICE	ICE	APR 17, 2019	AS NOTED
NOTES	Sheet No.		
	49		