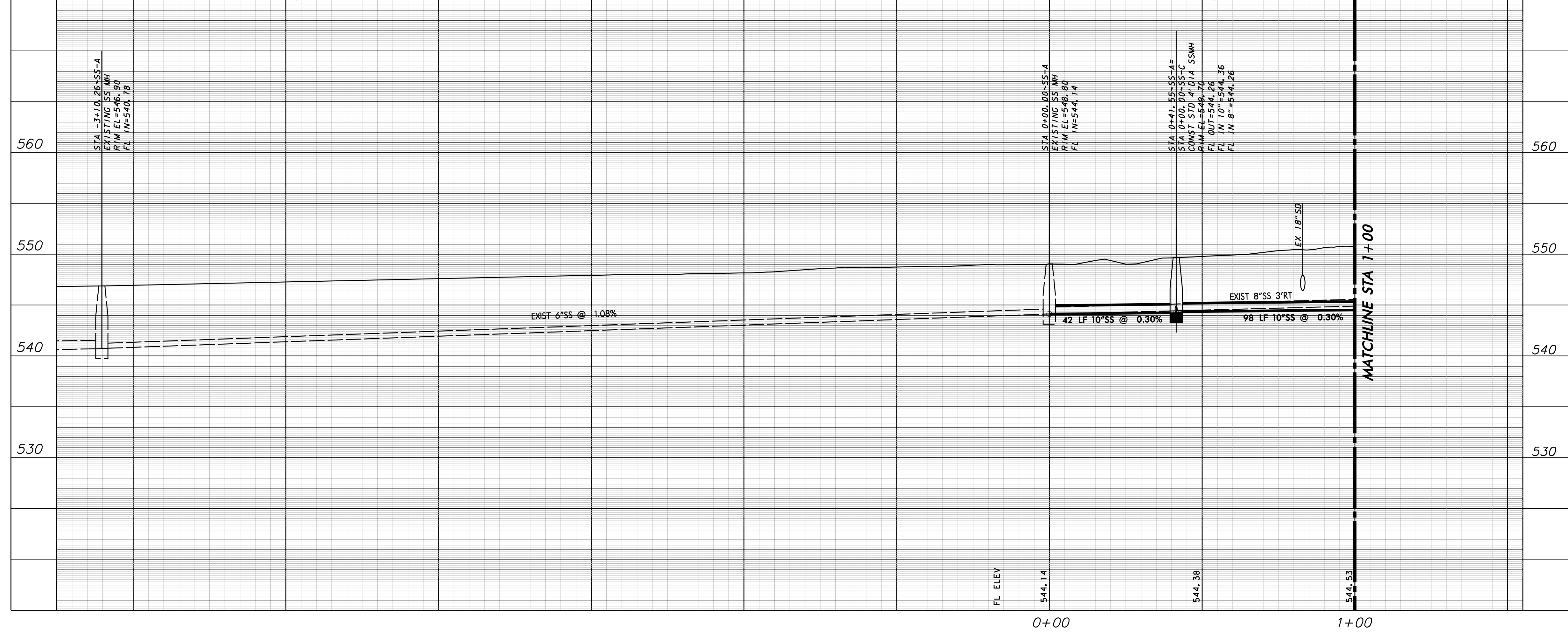
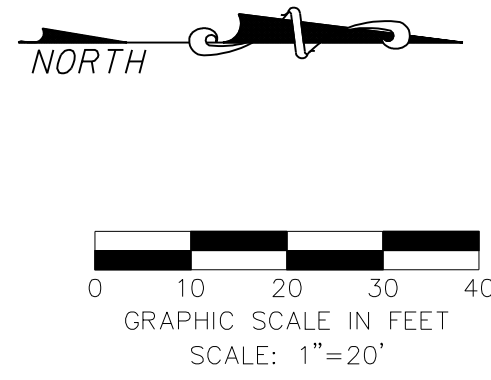


MATCHLINE STA 1+00

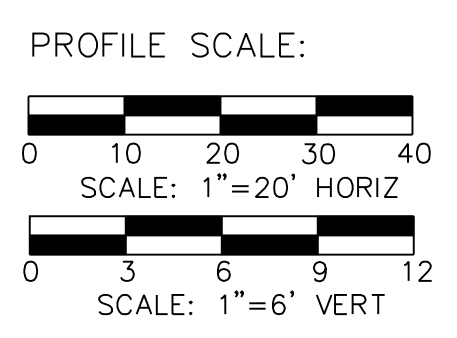


**WARNING**

CONTRACTOR IS TO CONTACT TEXAS ONE-CALL SYSTEM (1-800-245-4545) OR OTHER UTILITY LOCATING SERVICES AT LEAST 48 HOURS PRIOR TO CONSTRUCTION ACTIVITIES. ICON CONSULTING ENGINEERS, INC. IS NOT RESPONSIBLE FOR KNOWING ALL EXISTING UTILITIES IN THE PROJECT AREA NOR FOR DEPICTING THE EXACT LOCATIONS OF UTILITIES ON THESE DRAWINGS.

**BM #1 REF. ELEVATION = 547.84**  
 SQUARE CUT IN TOP OF CURB, NORTH MEDIAN END NOSE, AT INTERSECTION OF VITRUVIAN WAY AND MARSH LANE.

**BM #2 REF. ELEVATION = 559.47**  
 SQUARE CUT IN TOP OF CURB, SOUTH MEDIAN END NOSE, MARSH LANE 1127' NORTH OF VITRUVIAN WAY.



NO.	REVISION	BY	DATE

**icon Consulting Engineers, Inc.** 2840 W. Southlake Blvd., Suite 110  
 Civil Engineers - Designers - Planners Southlake, TX 76092 (817) 552-6210  
 Engineering Firm Registration Number F-9007

**PAVING, DRAINAGE & UTILITY IMPROVEMENTS**

VITRUVIAN PARK PUBLIC INFRASTRUCTURE BLOCK 200

TOWN OF ADDISON, TEXAS

**SANITARY SEWER PLAN & PROFILE**  
 LINE A - STA 0+00 TO 1+00

DESIGN	DRAWN	DATE	SCALE	NOTES	Sheet No.
ICE	ICE	APR 17, 2019	AS NOTED		51

VITRUVIAN PARK BLOCK 200 PUBLIC INFRASTRUCTURE - PROJECT NO. 5029-04