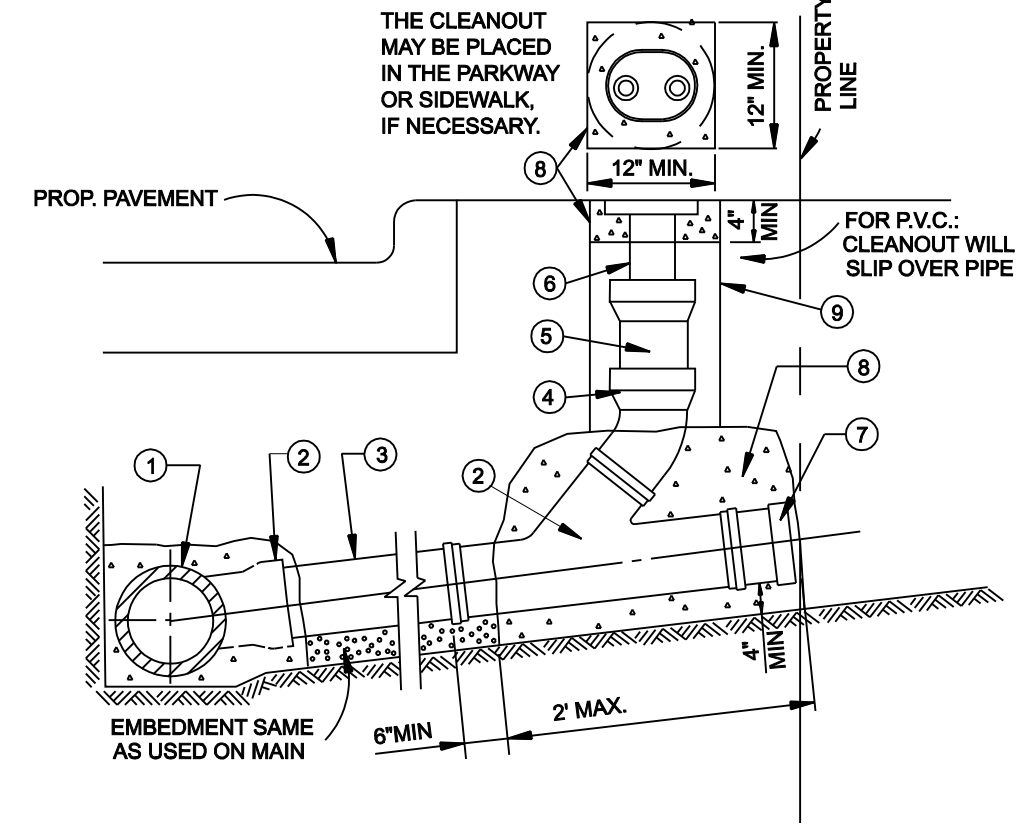
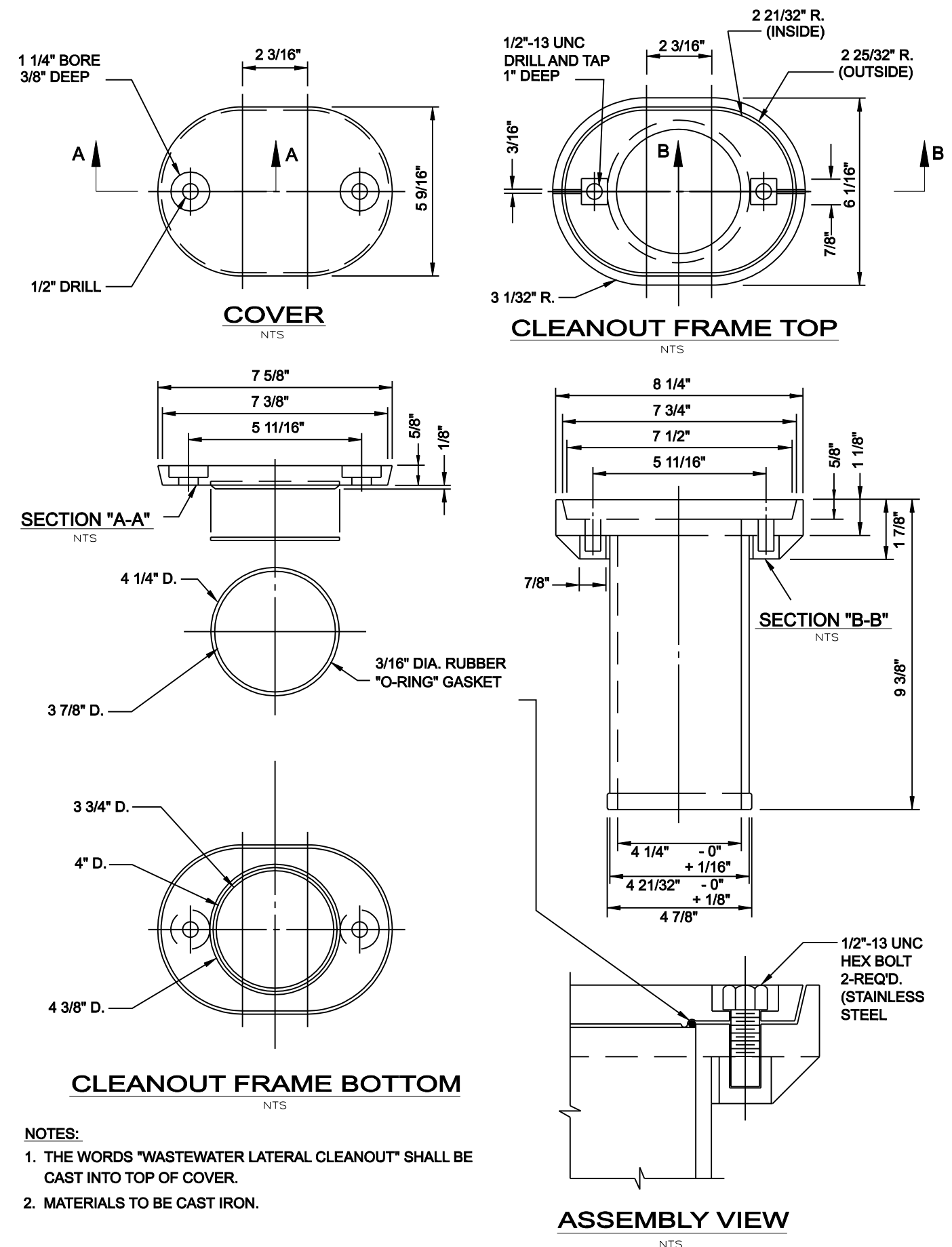


- KEY:
- ① WASTEWATER MAIN
 - ② WYE
 - ③ WASTEWATER LAT. (LENGTH VARIES)
 - ④ 4" LONG RADIUS 45° BEND
 - ⑤ 4" STACK (LENGTH VARIES)
 - ⑥ 4" WASTEWATER LAT. CLEANOUT CASTING
 - ⑦ PLUG
 - ⑧ CLASS "B" CONCRETE
 - ⑨ COMPACTED AS SPECIFIED, OR INUNDATED SAND



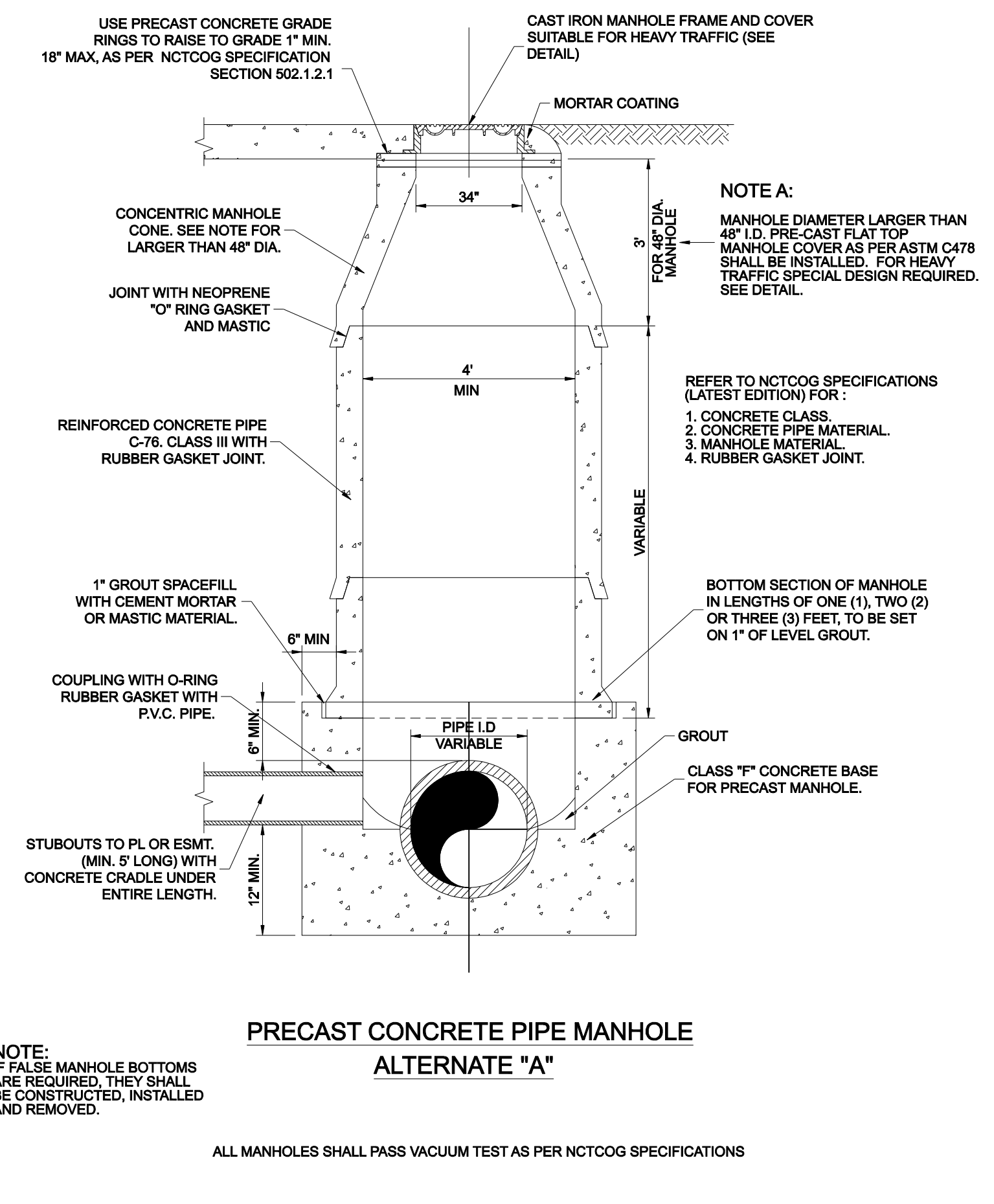
- NOTES:
- CLEANOUT CASTING TO BE FURNISHED AND PLACED PER SPECIAL CONDITIONS. IN VEHICLE TRAFFIC AREAS AND FOR COMMERCIAL MAINLINE LATERALS, WASTEWATER CLEANOUT SHALL BE OF CAST IRON.
 - SLOPE OF LATERAL TO BE 1% MIN., 2% MAX. UNLESS SHOWN OTHERWISE ON THE PLAN & PROFILE.
 - THE CLEANOUT STACK & CASTING MAY BE PLACED IN THE PARKWAY, VEHICLE TRAFFIC AREAS, OR SIDEWALK, IF NECESSARY.

SANITARY SEWER LATERAL CLEANOUT



- NOTES:
- THE WORDS "WASTEWATER LATERAL CLEANOUT" SHALL BE CAST INTO TOP OF COVER.
 - MATERIALS TO BE CAST IRON.

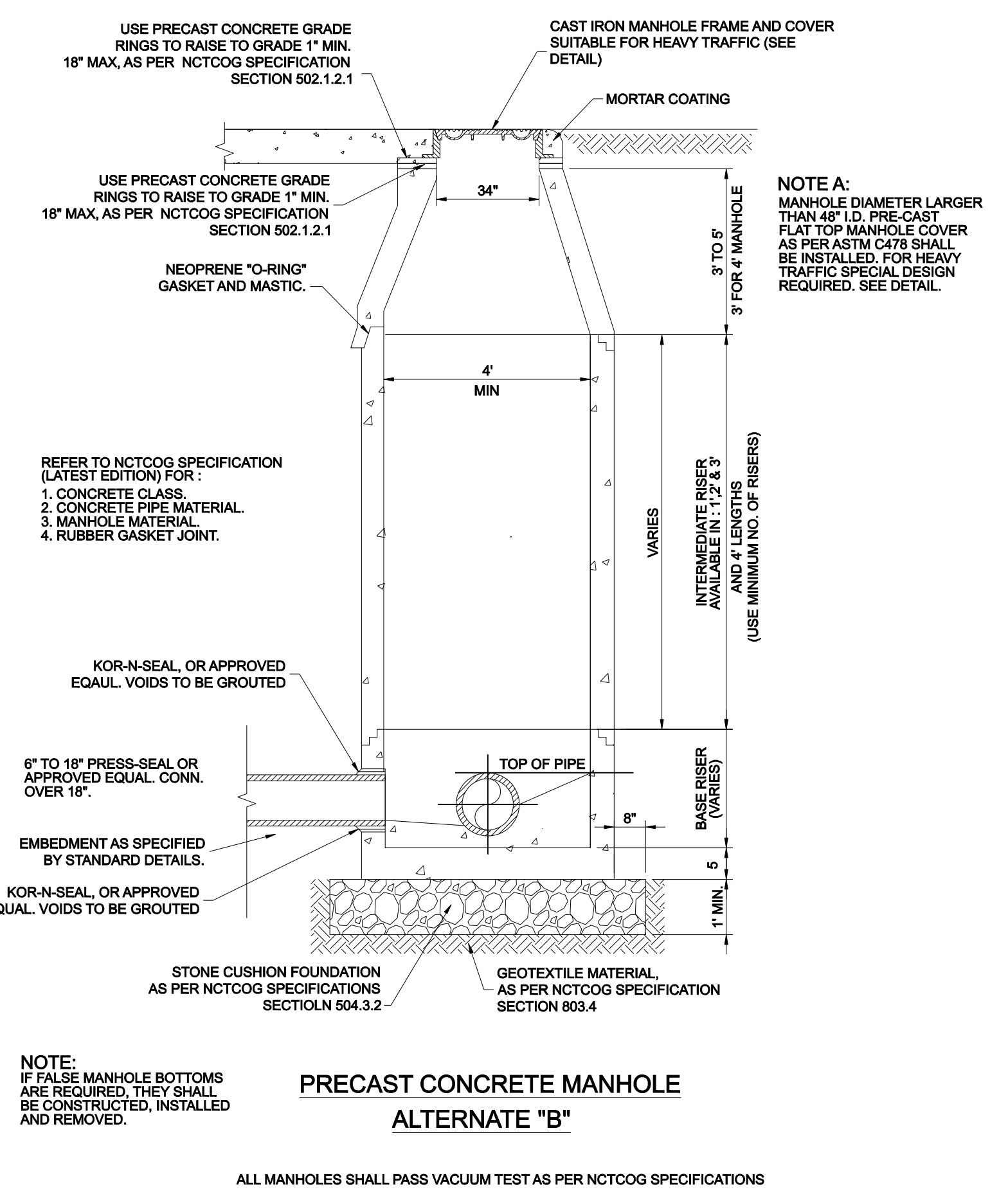
SANITARY SEWER LATERAL CLEANOUT FRAME & COVER



- NOTE:
- IF FALSE MANHOLE BOTTOMS ARE REQUIRED, THEY SHALL BE CONSTRUCTED, INSTALLED AND REMOVED.

PRECAST CONCRETE PIPE MANHOLE ALTERNATE "A"

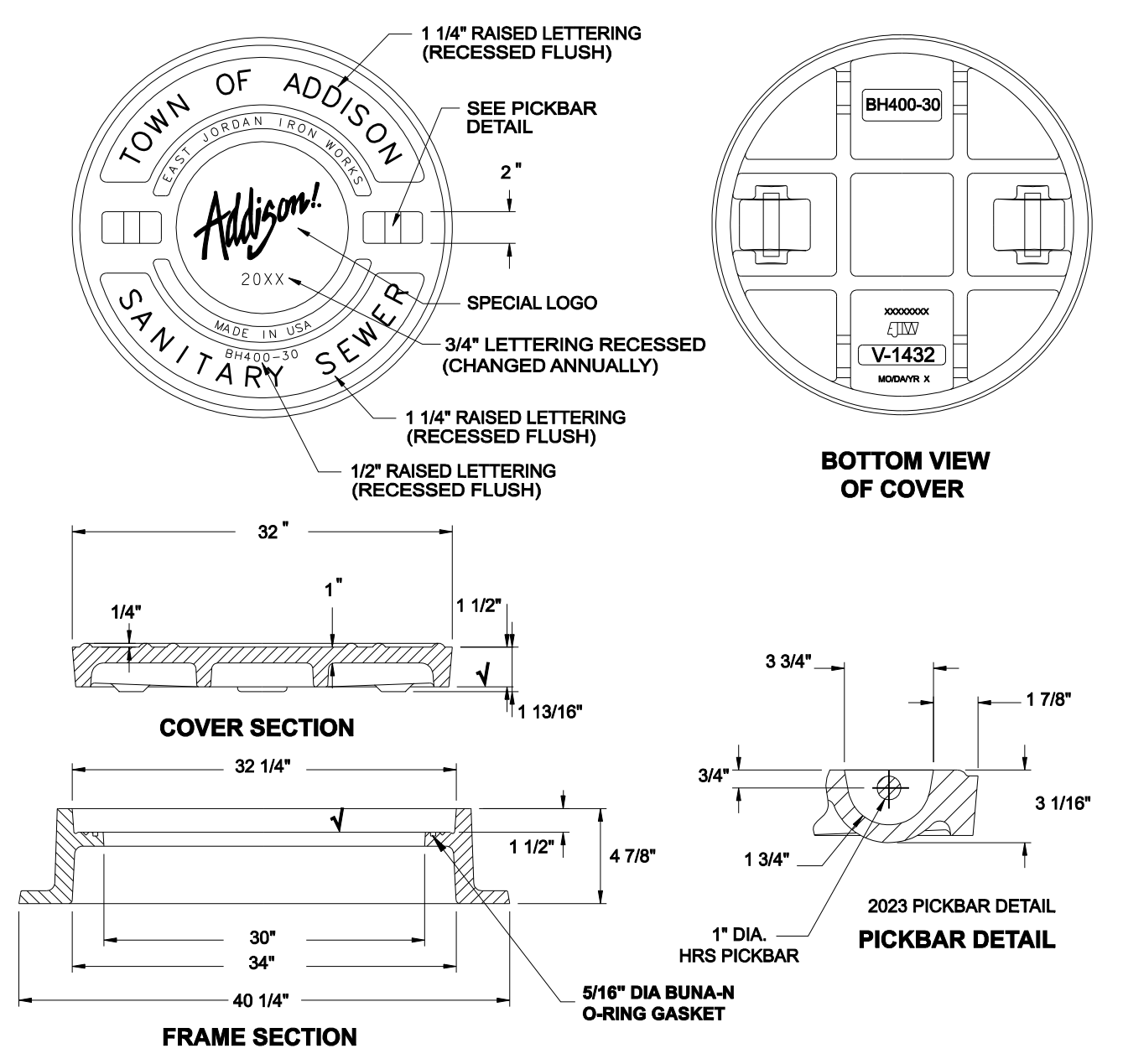
ALL MANHOLES SHALL PASS VACUUM TEST AS PER NCTCOG SPECIFICATIONS



- NOTE:
- IF FALSE MANHOLE BOTTOMS ARE REQUIRED, THEY SHALL BE CONSTRUCTED, INSTALLED AND REMOVED.

PRECAST CONCRETE MANHOLE ALTERNATE "B"

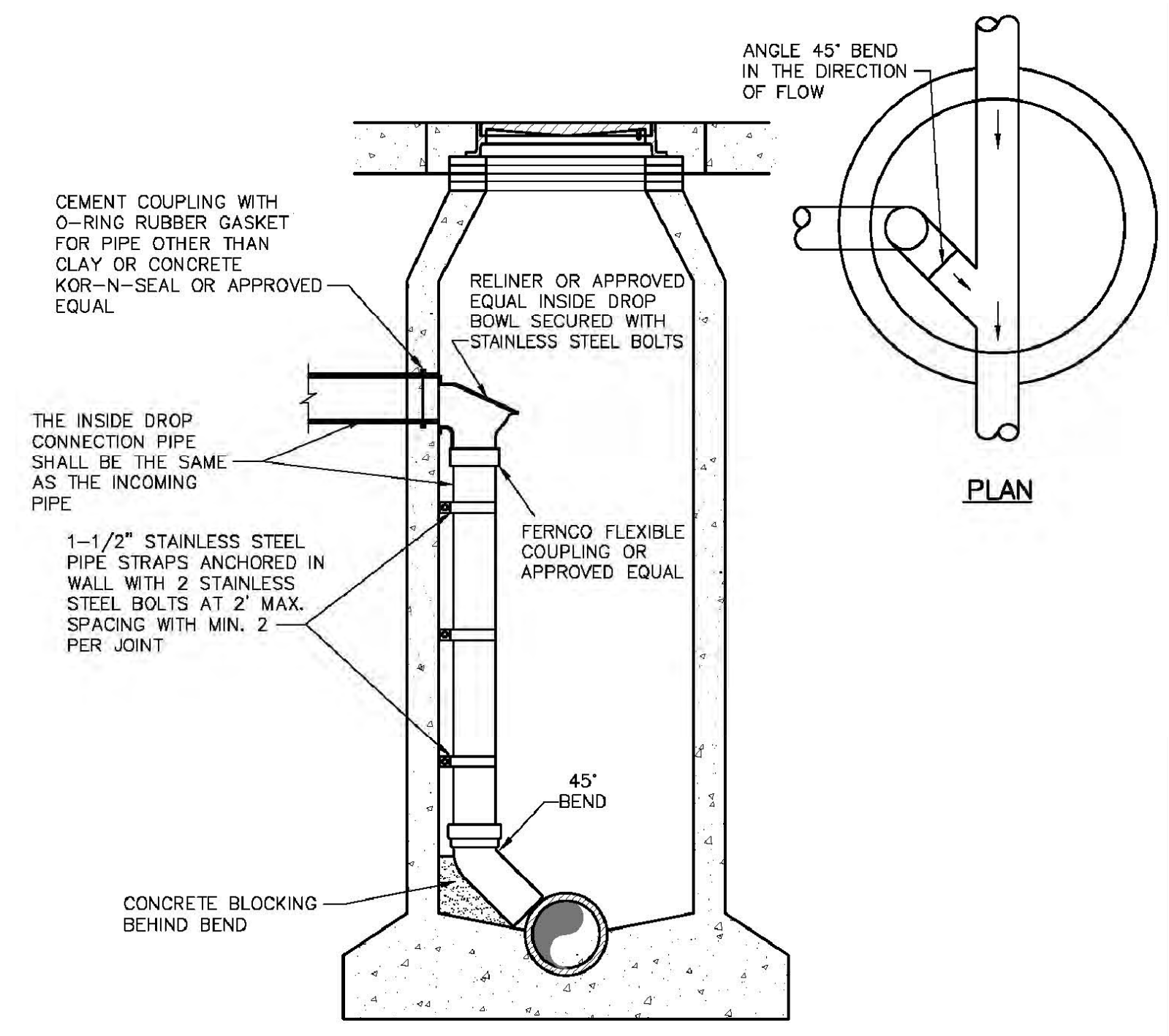
ALL MANHOLES SHALL PASS VACUUM TEST AS PER NCTCOG SPECIFICATIONS



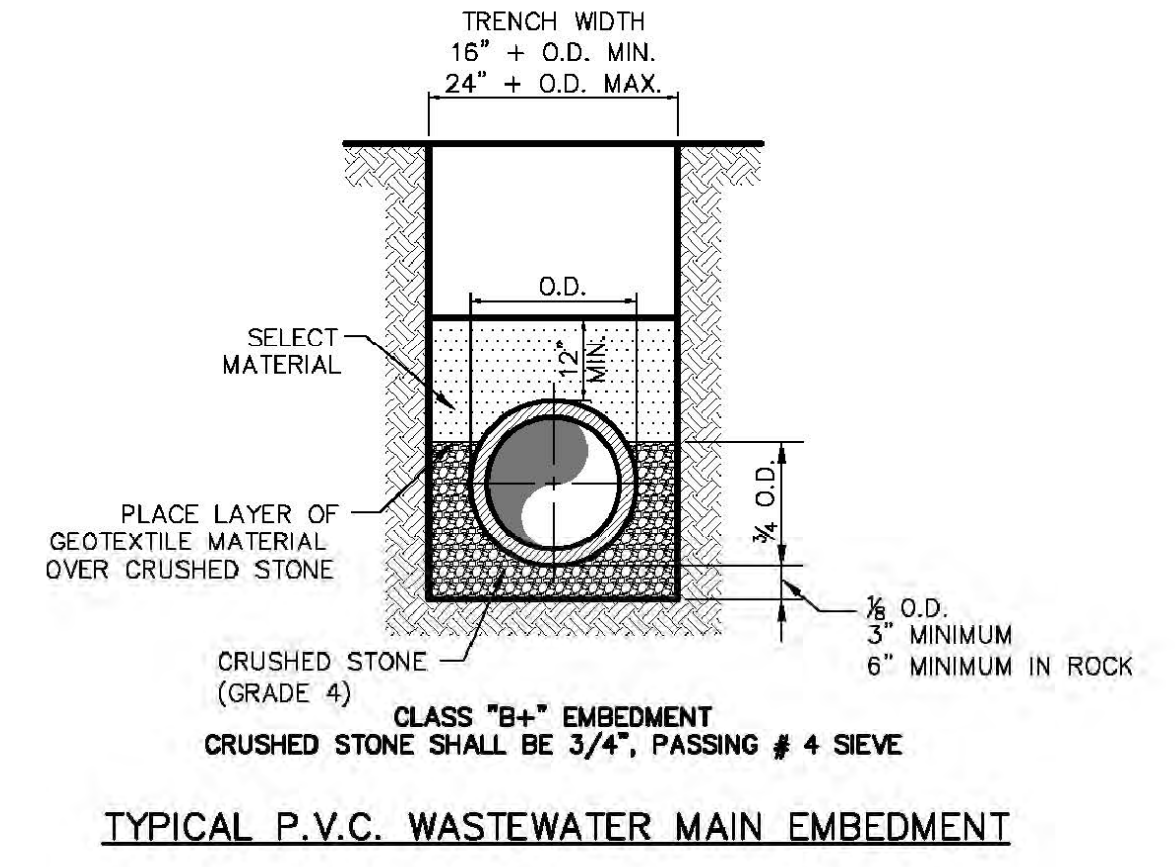
LOAD RATING HEAVY DUTY	COATING DIPPED	ESTIMATED WEIGHT COVER: LBS 86 kg	MATERIAL SPECIFICATION COVER - GRAY IRON ASTM A48 CL35B
---------------------------	-------------------	--------------------------------------	---

∇ DESIGNATES MACHINE SURFACE

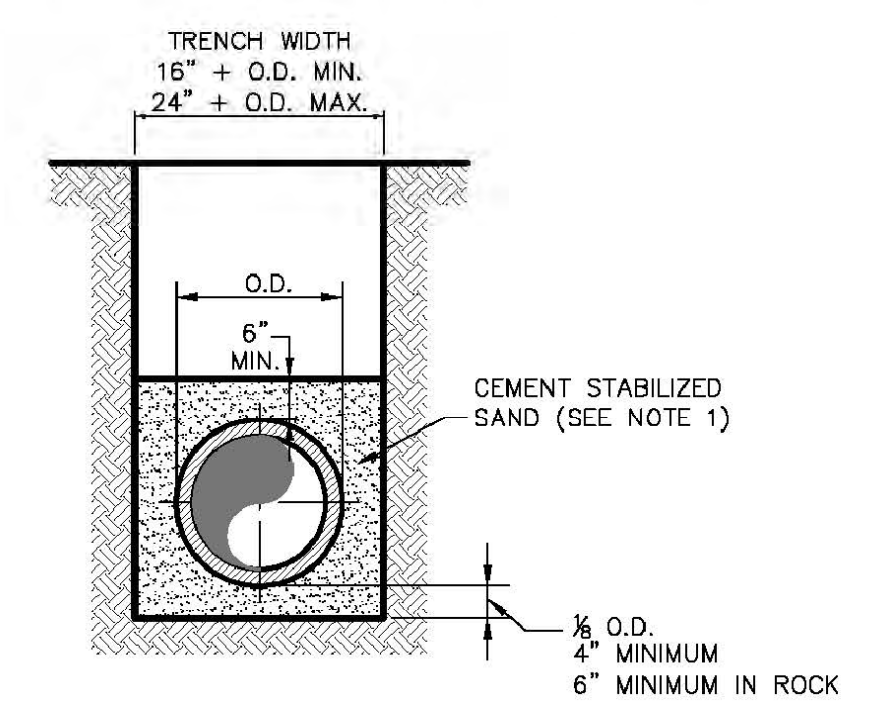
CAST IRON FRAME AND COVER



INTERIOR DROP MANHOLE CONNECTION



TYPICAL P.V.C. WASTEWATER MAIN EMBEDMENT



- NOTE:
- CEMENT STABILIZED SAND SHALL HAVE A MINIMUM OF 10% CEMENT PER CUBIC YARD OF CEMENT STABILIZED SAND MIXTURE, BASED ON LOOSE DRY WEIGHT VOLUME (AT LEAST 2.5 BAGS OF CEMENT PER CUBIC YARD OF MIXTURE). THE USE OF BROWN COLORING IN CEMENT STABILIZED SAND IS REQUIRED FOR PRESSURE RATED WASTEWATER MAIN AND LATERAL BEDDING.

P.V.C. WASTEWATER MAIN CEMENT STABILIZED SAND EMBEDMENT

PRELIMINARY
FOR REVIEW ONLY
NOT FOR CONSTRUCTION,
BID OR PERMIT PURPOSES
icon Consulting Engineers, Inc.
Civil Engineers - Designers - Planners
Southlake, TX 76092 (817) 552-6210
Engineer: BRUCE J. DUNNE
P.E. No. 114,62864 Date 08/05/16

NO.	REVISION	BY	DATE

icon Consulting Engineers, Inc. 2840 W. Southlake Blvd., Suite 110
Civil Engineers - Designers - Planners Southlake, TX 76092 (817) 552-6210
Engineering Firm Registration Number F-9007

PAVING, DRAINAGE & UTILITY IMPROVEMENTS
VITRUVIAN PARK PUBLIC INFRASTRUCTURE BLOCK 200
TOWN OF ADDISON, TEXAS

SANITARY SEWER DETAILS

DESIGN	DRAWN	DATE	SCALE	NOTES	Sheet No.
ICE	ICE	APR 17, 2019	AS NOTED		59

VITRUVIAN PARK BLOCK 200 PUBLIC INFRASTRUCTURE - PROJECT NO. 5029-04