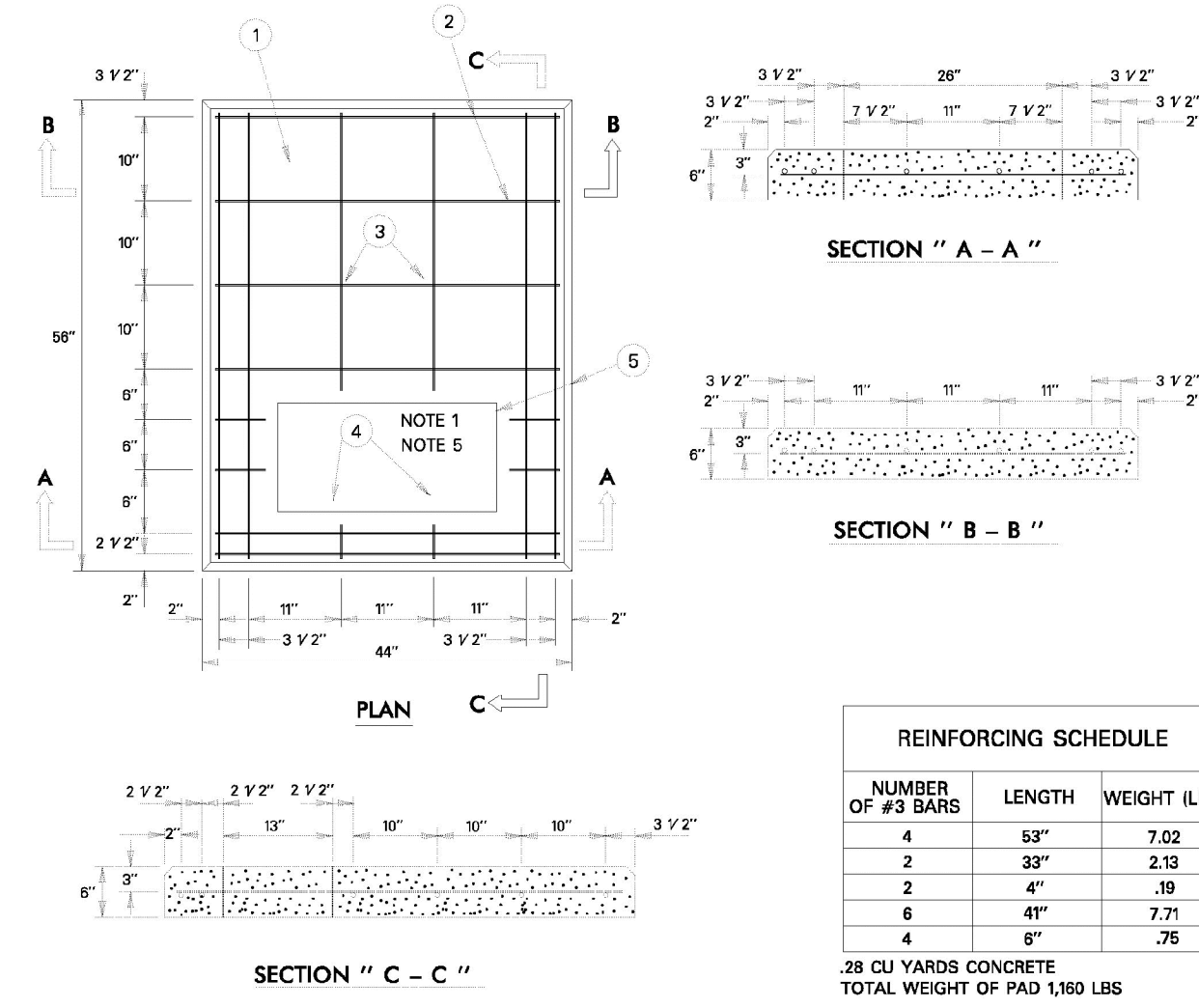


- NOTES:
1. PRECAST CONCRETE PAD SHALL BE USED UNLESS LIFTING EQUIPMENT IS UNAVAILABLE OR CANNOT ACCESS THE SITE. USE POLYMER PADS ONLY WHEN SETTING PAD BY HAND.
 2. THIS DIMENSION IS 6 INCHES FOR PRECAST CONCRETE PAD AND 4 INCHES FOR POLYMER CONCRETE PADS.
 3. REFERENCE STANDARD 202-360 FOR FOREIGN UTILITY COMPANY EQUIPMENT GROUND.
 4. PIERS SHALL BE INSTALLED UNDER PAD WHEN DIRT HAS BEEN DISTURBED UNDER THE LOAD BEARING AREA OF THE PAD. REFERENCE STANDARD 205-165 FOR PIER INSTALLATION.
 5. GROUTING DETAIL SEE STANDARD DRAWING 205-180.
 6. FOR TRANSFORMERS WITH 11 INCH CABINET DEPTH REDUCE THIS DIMENSION TO 4 INCHES.
 7. THE 3" FLEX CONDUIT (TSN 308206) SHALL HAVE A MINIMUM OF 8" OF COVER AS IT EXITS ON THE RIGHT HAND SIDE OF THE TRANSFORMER PAD.

ITEM	QTY	DESCRIPTION	TSN/REF	CU	MU
1	1	PAD, TRANSFORMER, PRECAST CONCRETE 44 x 56 IN.	304037	PPRCTII	
1	1	PAD, TRANSFORMER, POLYMER CONCRETE 44 x 56 IN.	305032	PPOCTII	
2	1	ROD, GROUND 5/8" x 8' CU	204-160		
3	1	ADAPTER, CABLE SPREADER, 2 IN. 2 PORT (INCLUDED W/PAD CU)	318742		
4	3	CONDUIT, HOPE, FLEX, 3"	308206		

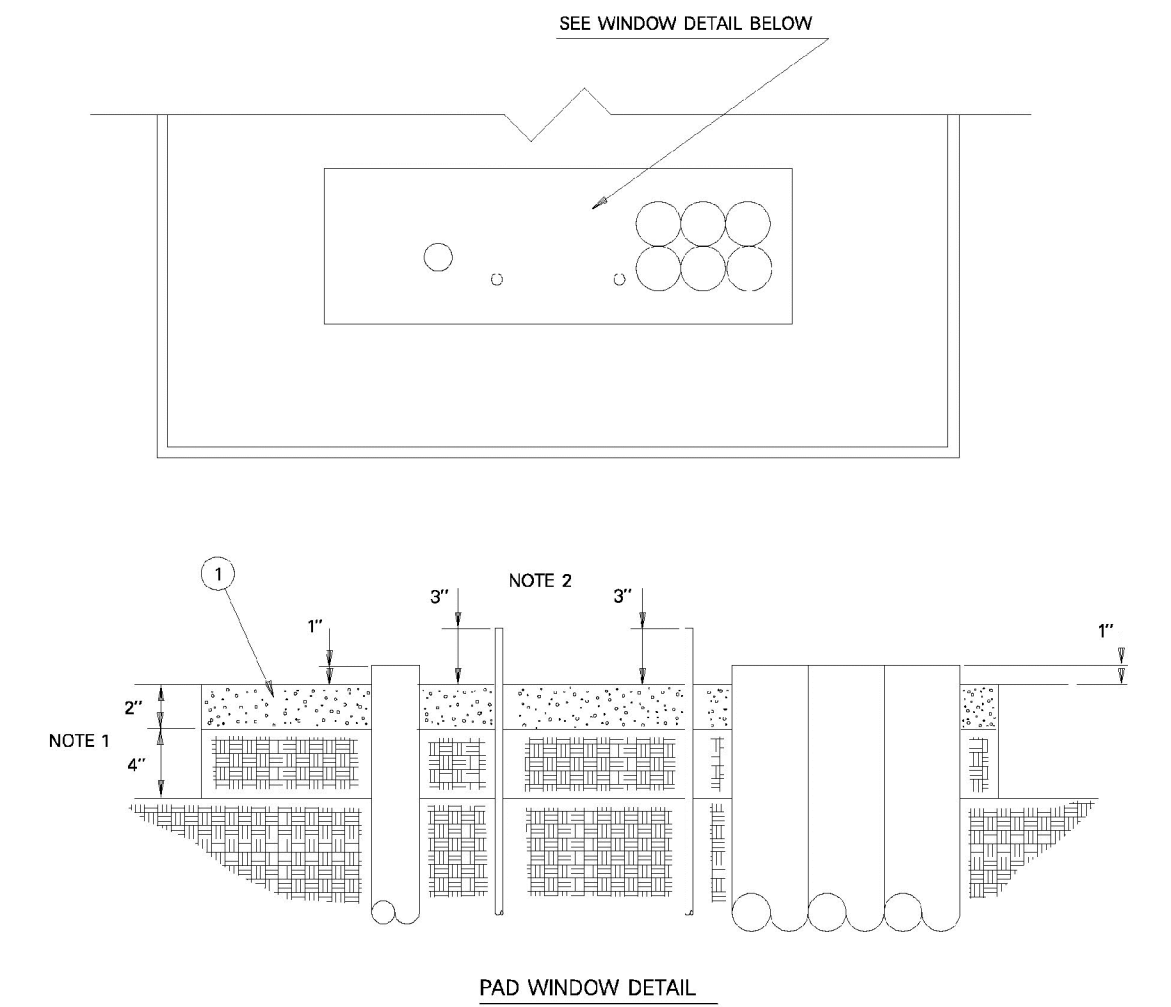
APPROVED BY TXU
Electric Delivery



- NOTES:
1. SEE STANDARD 205-150 OR 205-155 FOR LOCATIONS OF CONDUITS AND GROUND ROD.
 2. PIERS SHALL BE INSTALLED UNDER PAD WHEN DIRT HAS BEEN DISTURBED UNDER THE LOAD BEARING AREA OF THE PAD. REFERENCE STANDARD 205-165 FOR PIER INSTALLATION.
 3. ALL STEEL TO BE A MINIMUM OF 1/2" FROM SURFACE OF CONCRETE.
 4. ALL CHAMFERS TO BE 1/2" x 45 DEGREES. ROUNDING OF EDGES WITH ROUNDING TROWEL IS ACCEPTABLE IN lieu OF CHAMFERING.
 5. REFERENCE STANDARD 202-360 FOR FOREIGN UTILITY COMPANY EQUIPMENT GROUND.
 6. SEE ALSO STANDARD 205-305 FOR GENERAL NOTES.

ITEM	QTY	DESCRIPTION	TSN/ REF	CU	MU
1	0.28CY	CONCRETE			
2	47 FT	ROD, REINFORCING 3/8 IN.	303760		
3	AS REQD	WIRE, #16 STEEL, TIE SOLID BARE BLACK	311738		PCIPX
4	1	ROD, GROUND 5/8" x 8' CU	204-100, 150		
5	AS REQD	LUMBER			

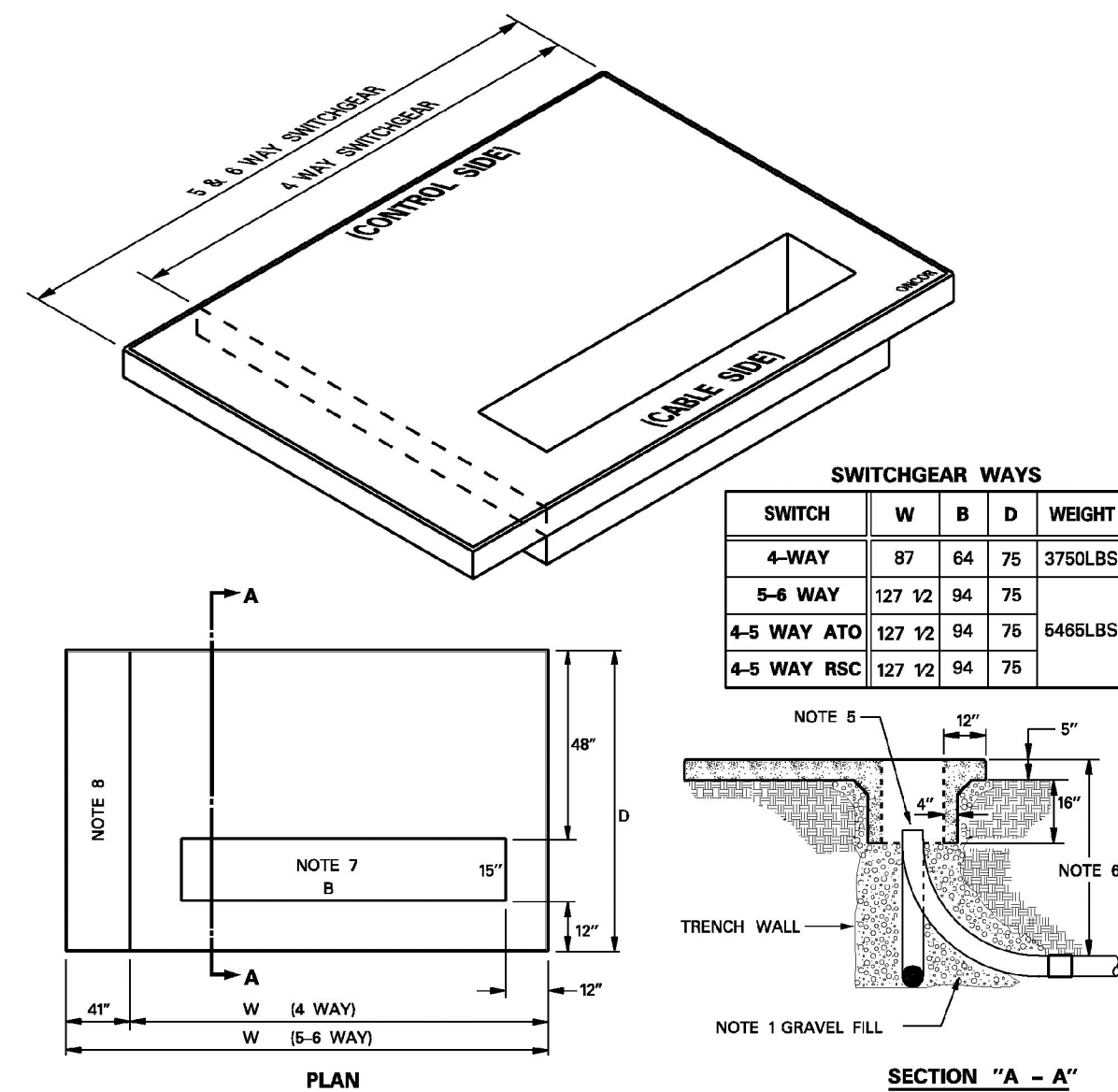
APPROVED BY TU ELECTRIC



- NOTES:
1. FILL IN PAD WINDOW WITH 4 INCHES OF EARTH BACKFILL AND 2" OF GROUT.
 2. GROUND RODS SHALL EXTEND A MAXIMUM OF 3 INCHES ABOVE GROUTING TO ASSURE ADEQUATE DRIVEN DEPTH AND ALLOW FOR ADEQUATE CONNECTING SPACE.

ITEM	QTY	DESCRIPTION	TSN	AUN	MACRO AUN
1	AS REQD	GROUT			

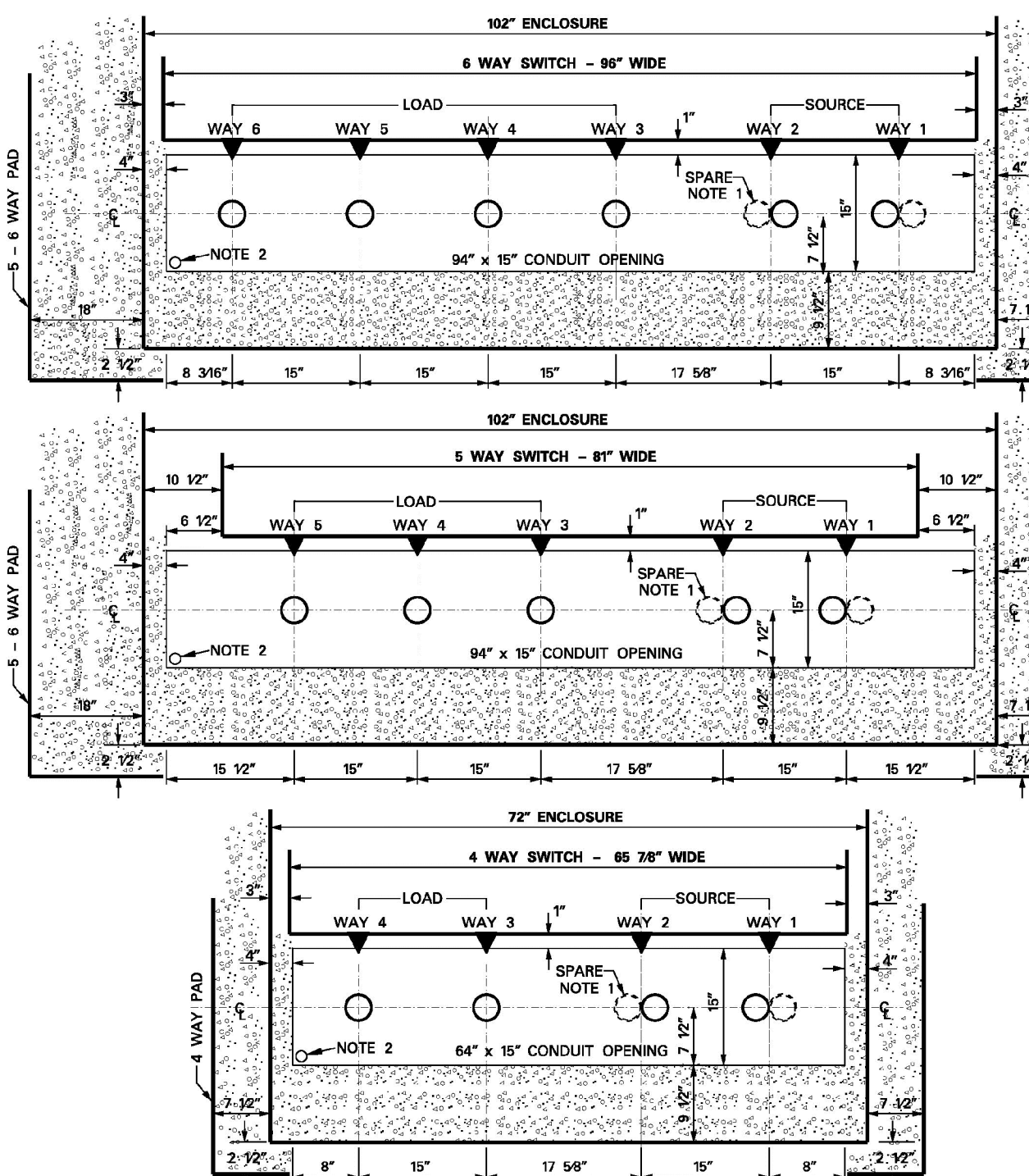
APPROVED BY TU ELECTRIC



- NOTES:
1. FOR STABILIZATION AND DRAINAGE INSTALL SMALL TO MEDIUM GRAVEL UNDER PAD DEEP WELL.
 2. FOR CLEARANCES ON ALL SIDES OF THE SWITCHGEAR SEE REFERENCE DRAWING 202-100.
 3. FOR PIER INSTALLATION SEE DRAWING #205-307.
 4. LIFT PAD WITH PROVIDED LIFTING POINTS ONLY. SEE LIFTING RINGS INSIDE WALL OF DEEP WELL.
 5. CONDUIT NOT TO EXTEND MORE THAN 3" ABOVE BOTTOM OF DEEP WELL.
 6. MINIMUM TRENCH DEPTH AT PAD TO TOP OF CONDUIT FOR THE FOLLOWING CONDUITS:
8" CONDUIT - 61"
4" CONDUIT - 47"
2" CONDUIT - 40"
 7. REFER TO STANDARD DWG #205-346 FOR CONDUIT LOCATIONS.
 8. ADDITIONAL AREA FOR CONTROL CABINET WHEN MOUNTING ATO (AUTO-TRANSFER) OR (RSC) REMOTE SUPERVISORY CONTROLLED SWITCHGEAR.

ITEM	QTY	DESCRIPTION	TSN/REF	CU	MU
1	1	PAD, PRECAST, 20" DEEP WELL, 4-WAY DEAD FRONT SWITCHGEAR	459291	FPDW250F	
2	1	PAD, PRECAST, 20" DEEP WELL, 5-WAY DEAD FRONT SWITCHGEAR	460221	FPDW250F6	

APPROVED BY ONCOR



- NOTE:
1. CONDUIT SHALL BE CENTERED ON CENTER BUSHING OF EACH SWITCHED WAY. IF SPARE CONDUIT IS REQUIRED, BOTH SHALL BE CENTERED AS SHOWN ON CENTER BUSHING OF SWITCHED WAY.
 2. FOR PADS PLUMBED INTO DUCT BANKS, INSTALL 3" COMMUNICATION CONDUIT FROM MANHOLE TO FRONT LEFT CORNER OF THE CONDUIT OPENING OF PAD.

APPROVED BY ONCOR

NO.	REVISION	BY	DATE

icon Consulting Engineers, Inc. 2840 W. Southlake Blvd., Suite 110
Civil Engineers - Designers - Planners Southlake, TX 76092 (817) 552-6210
Engineering Firm Registration Number F-9007

PAVING, DRAINAGE & UTILITY IMPROVEMENTS

VITRUVIAN PARK PUBLIC INFRASTRUCTURE BLOCK 200

TOWN OF ADDISON, TEXAS

ELECTRIC DUCT BANK DETAILS

DESIGN	DRAWN	DATE	SCALE	NOTES	Sheet No.
ICE	ICE	APR 17, 2019	AS NOTED		70