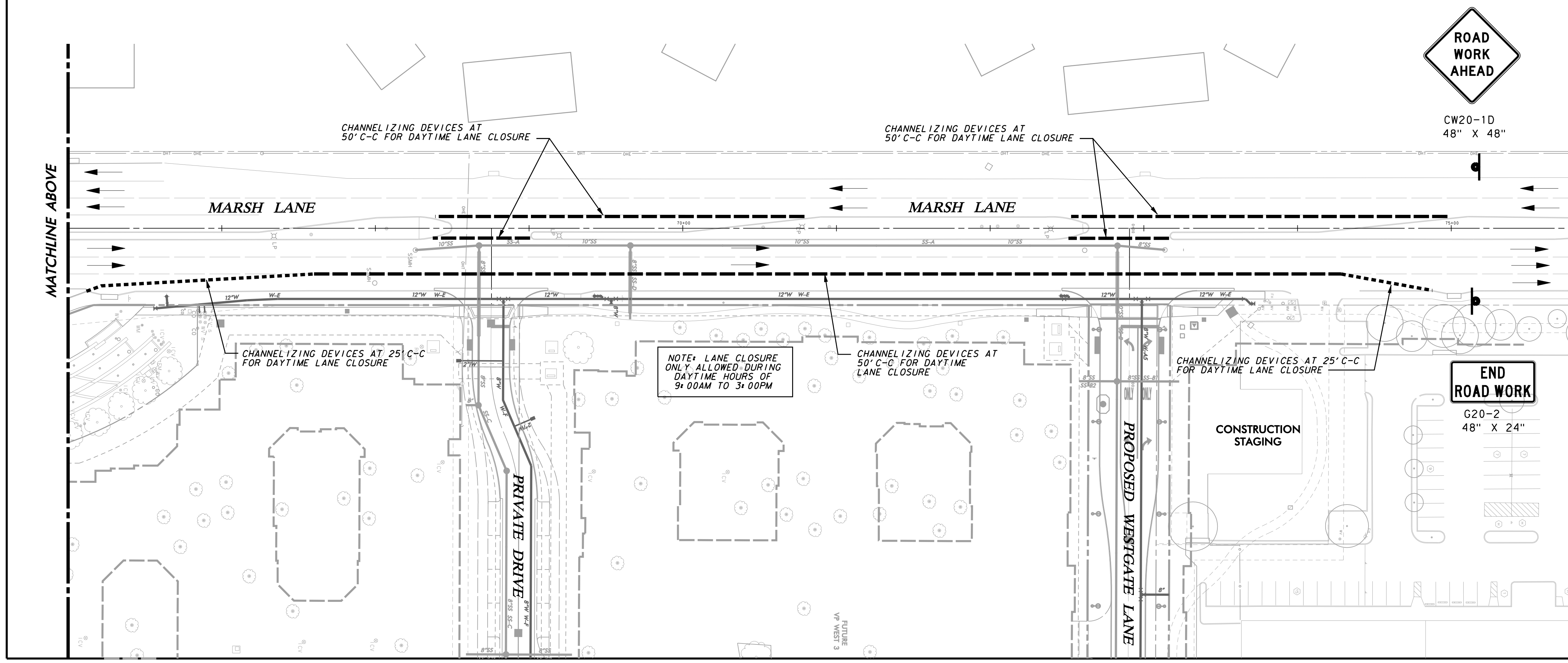
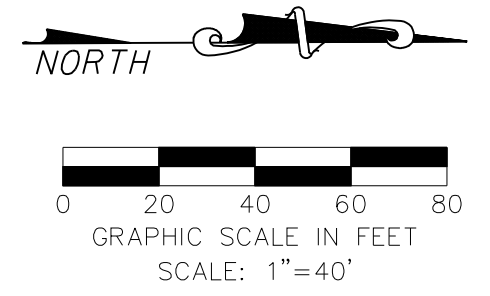


MATCHLINE BELOW



MATCHLINE ABOVE

**WARNING**

CONTRACTOR IS TO CONTACT TEXAS ONE-CALL SYSTEM (1-800-245-4545) OR OTHER UTILITY LOCATING SERVICES AT LEAST 48 HOURS PRIOR TO CONSTRUCTION ACTIVITIES. ICON CONSULTING ENGINEERS, INC. IS NOT RESPONSIBLE FOR KNOWING ALL EXISTING UTILITIES IN THE PROJECT AREA NOR FOR DEPICTING THE EXACT LOCATIONS OF UTILITIES ON THESE DRAWINGS.

BM #1 REF. ELEVATION = 547.84  
 SQUARE CUT IN TOP OF CURB, NORTH MEDIAN END NOSE, AT INTERSECTION OF VITRUVIAN WAY AND MARSH LANE.  
 BM #2 REF. ELEVATION = 559.47  
 SQUARE CUT IN TOP OF CURB, SOUTH MEDIAN END NOSE, MARSH LANE 1127' NORTH OF VITRUVIAN WAY.



NO.	REVISION	BY	DATE
<b>icon Consulting Engineers, Inc.</b> 2840 W. Southlake Blvd., Suite 110 Civil Engineers - Designers - Planners Southlake, TX 76092 (817) 552-6210 Engineering Firm Registration Number F-9007			
<b>PAVING, DRAINAGE &amp; UTILITY IMPROVEMENTS</b>			
VITRUVIAN PARK PUBLIC INFRASTRUCTURE BLOCK 200			
TOWN OF ADDISON, TEXAS			
<b>TRAFFIC CONTROL PLAN</b> <b>MARSH LANE - WATER</b>			
DESIGN	DRAWN	DATE	SCALE
ICE	ICE	APR 17, 2019	AS NOTED
NOTES	Sheet No.		74

VITRUVIAN PARK BLOCK 200 PUBLIC INFRASTRUCTURE - PROJECT NO. 5029-04