

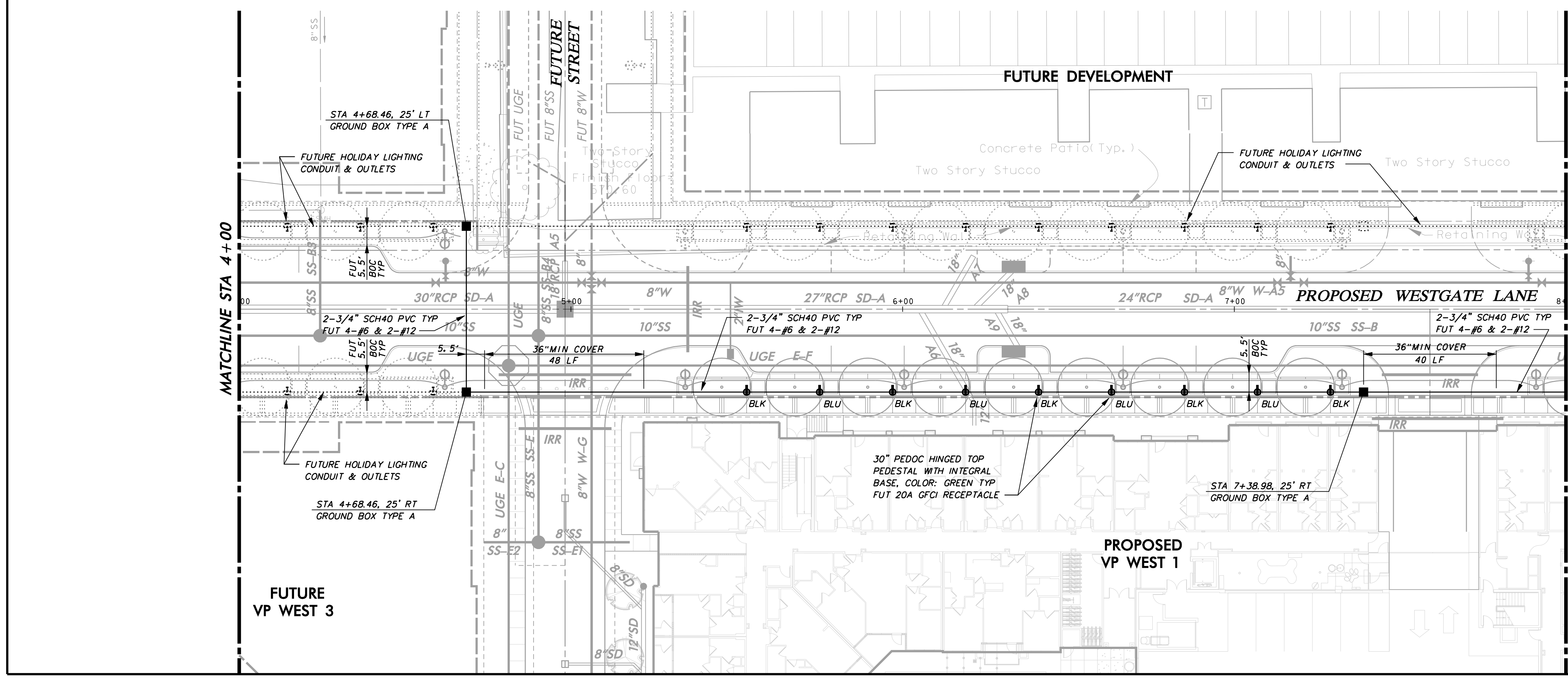
MATCHLINE STA 4+00

**LEGEND**

- |  |            |          |
|--|------------|----------|
| GROUND BOX   | PROPOSED   | FUTURE   |
| PVC CONDUIT  | —          | ---      |
| TRANSFORMER ON PAD   | * [Symbol] | [Symbol] |
| STREET LIGHT - TYPE 1  | [Symbol]   | [Symbol] |
| PEDOC OUTLET BOX PEDESTAL<br>30" HEIGHT SINGLE GANG HINGED<br>TOP WITH INTEGRAL BASE<br>COLOR: GREEN |            |          |
| FUTURE 20A GFCI RECEPTACLE<br>HUBBLE GFR53625GW OR EO  |            |          |
| * PROVIDED BY POWER COMPANY  |            |          |

**HOLIDAY LIGHTING & CONDUIT NOTES**

- REFER TO SHEET 3 "GENERAL CONSTRUCTION NOTES, LEGEND AND ABBREVIATIONS" FOR THE GENERAL CONSTRUCTION NOTES FOR THE PROJECT.
- REFER TO SHEET ED(3)-03 FOR ELECTRIC DETAILS - GROUND BOXES, RIGID METAL CONDUIT ELBOWS ARE NOT REQUIRED. CONCRETE APRON IS NOT REQUIRED.
- WATER, SANITARY SEWER, AND STORM DRAIN LINES ARE SHOWN FOR REFERENCE ONLY. CONTRACTOR SHALL LOCATE ALL UTILITY LINES IN THE AREA PRIOR TO DIGGING.
- INSTALL SCHEDULE 40 PVC UNDERGROUND (24" MIN COVER). ALL STREET AND DRIVEWAY CROSSINGS (36" MIN COVER). ALL BENDS TO BE LONG RADIUS.
- CONNECTION TO POWER COMPANY CIRCUITS TO BE MADE ONLY BY POWER COMPANY.
- UNLESS OTHERWISE INDICATED ALL WORK SHALL CONFORM TO THE 2008 NATIONAL ELECTRICAL CODE (NFPA 70) AND THE 2007 NATIONAL ELECTRICAL SAFETY CODE (ANSI C2).
- ALL EMPTY CONDUIT INSTALLED FOR FUTURE EXTENSION SHALL BE TURNED UP AND EXTENDED UP TO FINISHED GRADE. CAP ENDS OF ALL CONDUITS. ALL EMPTY CONDUIT SHALL CONTAIN A PULL LINE - 200 LB TEST NYLON.
- REFER TO REFERENCED SHEETS FOR ELECTRICAL DETAILS.

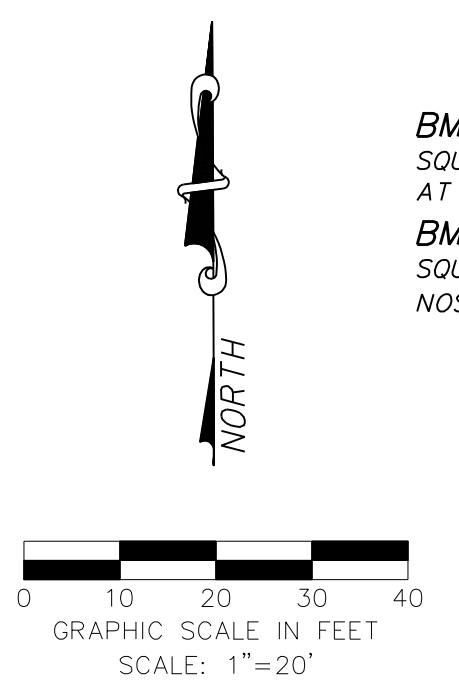


MATCHLINE STA 8+00

**WARNING**

CONTRACTOR IS TO CONTACT TEXAS ONE-CALL SYSTEM (1-800-245-4545) OR OTHER UTILITY LOCATING SERVICES AT LEAST 48 HOURS PRIOR TO CONSTRUCTION ACTIVITIES. ICON CONSULTING ENGINEERS, INC. IS NOT RESPONSIBLE FOR KNOWING ALL EXISTING UTILITIES IN THE PROJECT AREA NOR FOR DEPICTING THE EXACT LOCATIONS OF UTILITIES ON THESE DRAWINGS.

BM #1 REF. ELEVATION = 547.84  
 SQUARE CUT IN TOP OF CURB, NORTH MEDIAN END NOSE,  
 AT INTERSECTION OF VITRUVIAN WAY AND MARSH LANE.  
 BM #2 REF. ELEVATION = 559.47  
 SQUARE CUT IN TOP OF CURB, SOUTH MEDIAN END  
 NOSE, MARSH LANE 1127' NORTH OF VITRUVIAN WAY.



NO.	REVISION	BY	DATE

<b>icon</b> Consulting Engineers, Inc. 2840 W. Southlake Blvd., Suite 110 Civil Engineers - Designers - Planners Southlake, TX 76092 (817) 552-6210 Engineering Firm Registration Number F-9007					
<b>PAVING, DRAINAGE &amp; UTILITY IMPROVEMENTS</b>					
VITRUVIAN PARK PUBLIC INFRASTRUCTURE BLOCK 200					
TOWN OF ADDISON, TEXAS					
<b>HOLIDAY LIGHT &amp; CONDUIT PLAN</b> WESTGATE LANE - STA 0+00 TO 8+00					
DESIGN	DRAWN	DATE	SCALE	NOTES	Sheet No.
ICE	ICE	APR 17, 2019	AS NOTED		79

VITRUVIAN PARK BLOCK 200 PUBLIC INFRASTRUCTURE - PROJECT NO. 5029-04