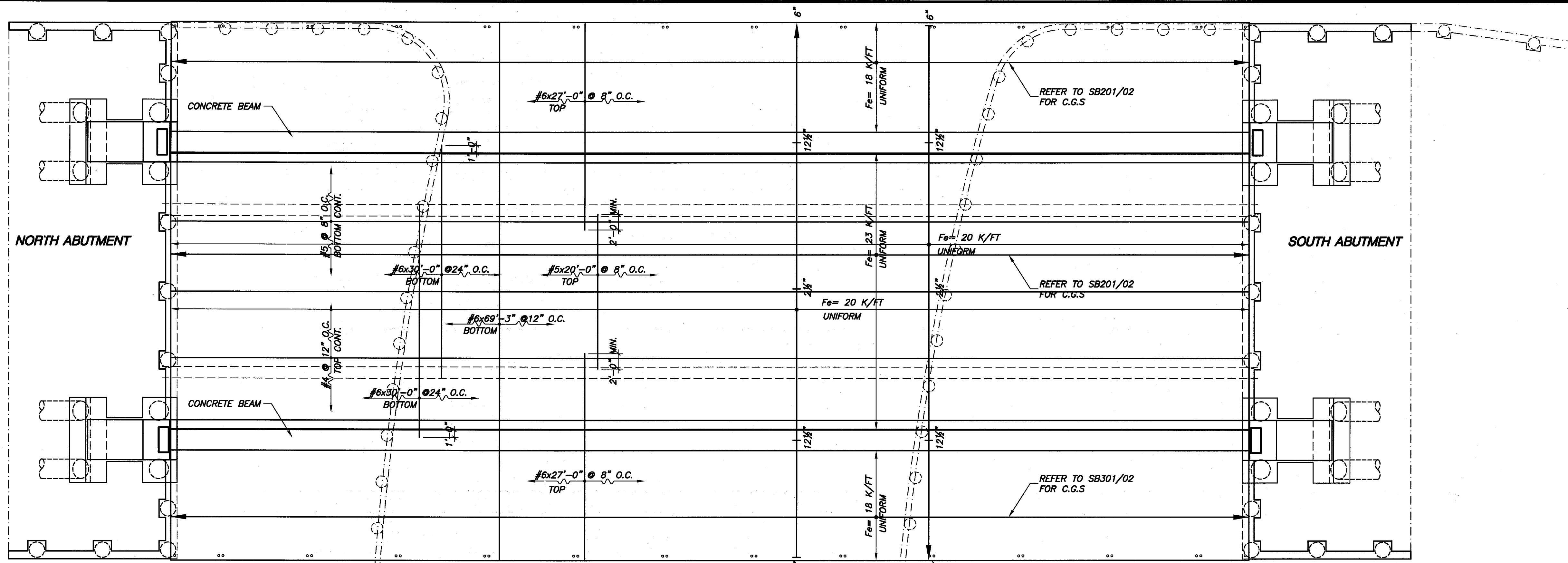
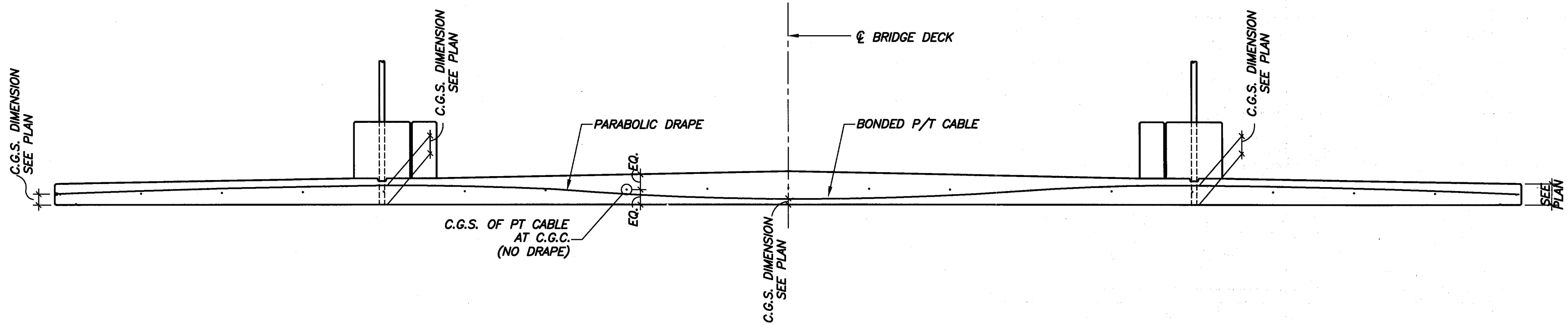


**PLAN NOTES:**

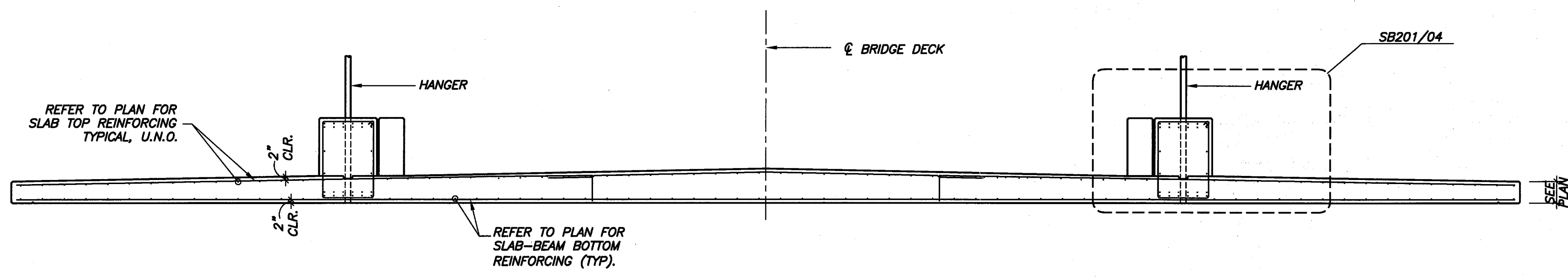
1. ALL POST-TENSIONING FORCES ARE EFFECTIVE.
2.  $3'' \leftarrow 1''$  REFER TO SB201/02 FOR CABLE DRAPE PROFILES.
3.  $\text{---}$  INDICATES CABLE DEAD END.
4.  $\text{---}$  INDICATES CABLE STRESSING END.
5. ALL CABLES NOTED AS UNIFORM SHALL BE GROUPED AND SPACED TO PROVIDE THE EFFECTIVE FORCE INDICATED PER LINEAL FOOT OF SLAB.



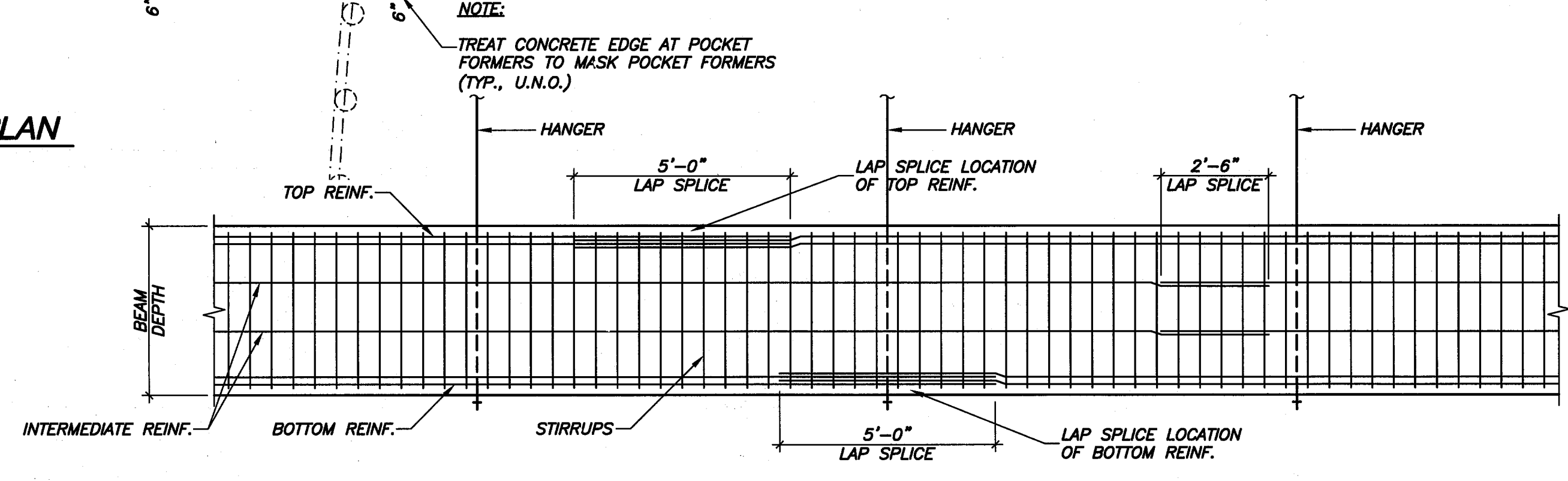
**01 TRAFFIC BRIDGE MILD STEEL & PT CABLE PLAN**  
 1/8" = 1'-0" NORTH



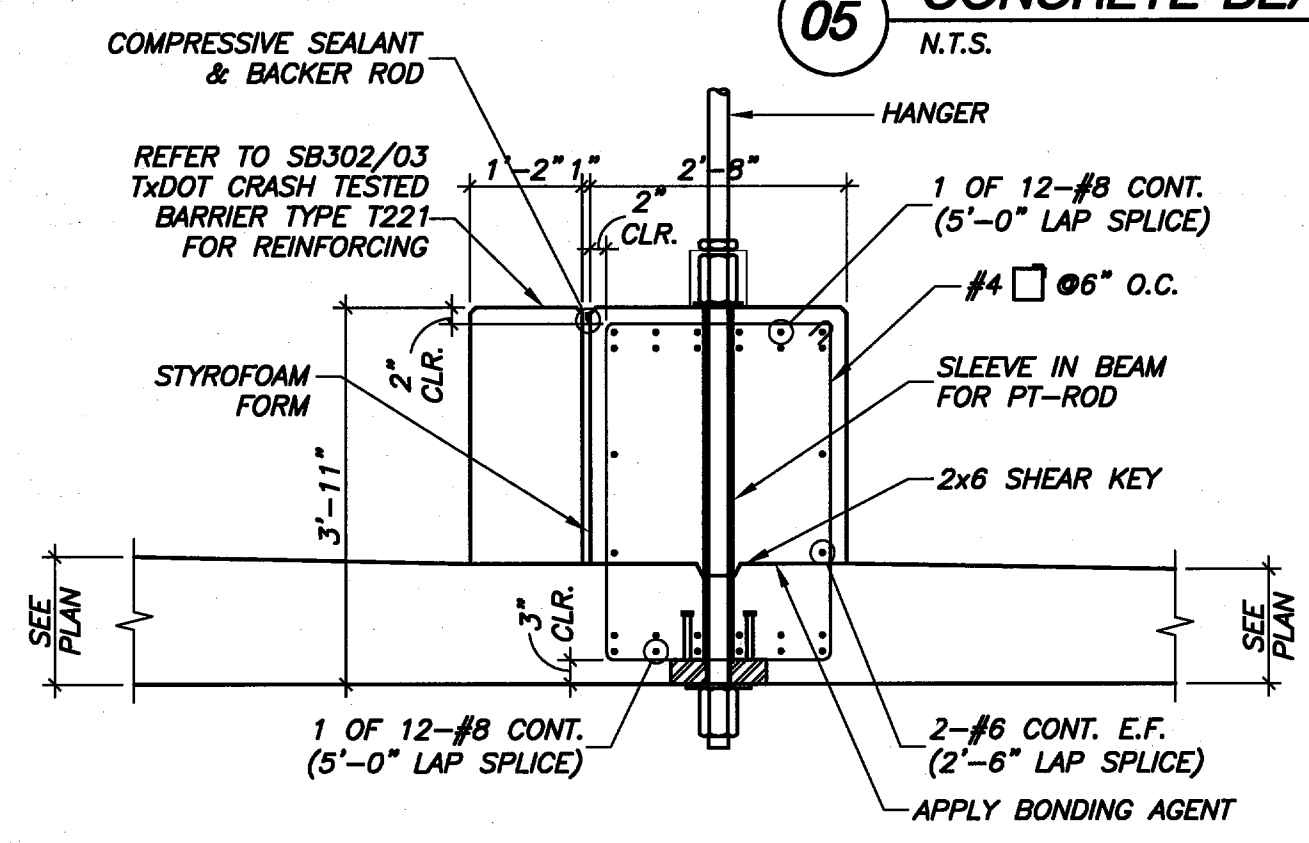
**02 POST-TENSIONED CABLE PROFILE**  
 N.T.S.



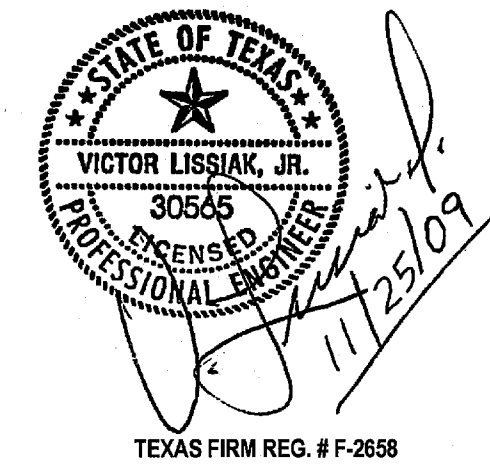
**03 MILD STEEL REINFORCING PROFILE**  
 N.T.S.



**05 CONCRETE BEAM REINFORCING PROFILE**  
 N.T.S.



**04 TYP. BEAM REINFORCING DETAIL**  
 N.T.S.



PRELIMINARY-FOR REVIEW ONLY				01/25/09
NO.	REVISION	BY	DATE	
TOWN OF ADDISON DALLAS COUNTY, TEXAS				
VITRUVIAN PARK BRIDGES BELLA LANE				
<b>MILD STEEL &amp; PT CABLE PLAN</b>				
<b>VIEWTECH, INC.</b> Structural Engineers		4205 Beltway Dr. - Addison, Texas 75001 (972) 681-8187 Fax (972) 681-8172		
PROJECT	DESIGN	DRAWN	DATE	SHEET
2007.144	VL	NERF	NOV. 25 2009	SB301

TEXAS FIRM REG. # F-2658