

02 BRIDGE ELEVATION
3/16"=1'-0"

PAINING FOR STEEL & CONCRETE

PART 1: GENERAL

1.1 SUMMARY

A. THIS SPECIFICATION IS INTENDED FOR PAINTING STEEL AND CONCRETE SURFACES AS INDICATED ON THE PAINT DRAWINGS.

1.2 REFERENCES

A. STEEL STRUCTURES PAINTING COUNCIL, NATIONAL ASSOCIATION OF CORROSION ENGINEERS (SSPC): STEEL STRUCTURES PAINTING MANUAL, VOLUME 2, SYSTEMS AND SPECIFICATIONS.

1.3 ACCEPTABLE MANUFACTURERS

MATERIALS MANUFACTURED BY THE FOLLOWING MANUFACTURERS LISTED BELOW ARE ACCEPTABLE:

- CARBOLINE
- CORONADO
- PORTER
- SHERWIN-WILLIAMS
- TNEMEC

1.4 SUBMITTALS

A. PRODUCT DATA: SUBMIT MANUFACTURER'S SPECIFICATIONS TO EVIDENCE COMPLIANCE WITH THESE SPECIFICATIONS. INCLUDE LABEL ANALYSIS OF FINISH COATING.

B. SAMPLES: FERROUS METAL: PROVIDE TWO 8" SQUARE SAMPLES OF SOLID METAL FOR EACH COLOR SELECTED. DEFINE PRIME AND FINISH COATS.

C. SUBMIT MANUFACTURER'S INSTALLATION INSTRUCTIONS.

1.5 QUALITY ASSURANCE

A. SINGLE SOURCE RESPONSIBILITY: PROVIDE PRIMER MATERIAL PRODUCED BY THE SAME MANUFACTURER AS THE FINISH COATS. USE ONLY THINNERS RECOMMENDED BY THE MANUFACTURER, AND ONLY WITHIN RECOMMENDED LIMITS.

1.6 JOB CONDITIONS

A. APPLY COATING ONLY WHEN THE TEMPERATURE OF SURFACES TO BE COATED AND SURROUNDING AIR TEMPERATURES ARE ABOVE 45 DEG. F (7 DEG. C), UNLESS OTHERWISE PERMITTED BY MANUFACTURER'S PRINTED INSTRUCTIONS.

B. DO NOT APPLY COATING IN SNOW, RAIN, FOG OR MIST, OR WHEN THE RELATIVE HUMIDITY EXCEEDS 85 PERCENT, OR AT TEMPERATURES LESS THAN 5 DEG. F (3 DEG. C) ABOVE THE DEW POINT, OR TO DAMP OR WET SURFACES UNLESS OTHERWISE PERMITTED BY MANUFACTURER'S PRINTED INSTRUCTION. ALLOW WET SURFACES TO DRY THOROUGHLY AND ATTAIN THE TEMPERATURE AND CONDITIONS SPECIFIED BEFORE PROCEEDING WITH OR CONTINUING THE COATING OPERATION.

PART 2: PRODUCTS

2.1 MATERIALS

A. PRIMER: ORGANIC ZINC RICH PRIMER: PROVIDE FACTORY FORMULATED PRIME COAT MATERIAL COMPATIBLE WITH THE SUBSTRATE AND FINISH COATS INDICATED. PRIMER SHALL BE A TWO OR THREE COMPONENT POLYAMIDE EPOXY ZINC-RICH COATING. PRIMERS SHALL CONTAIN NO LEAD.
CARBOLINE: NO 858
CORONADO: POLYAMIDE EPOXY ZINC RICH PRIMER, 101-152
PORTER: ZINC-LOCK NO 308
SHERWIN-WILLIAMS: ZINC CLAD IV
TNEMEC: 90-97

B. INTERMEDIATE COAT: HIGH BUILD EPOXY. PROVIDE FACTORY FORMULATED POLYAMIDE EPOXY INTERMEDIATE COAT COMPATIBLE WITH PRIME COAT AND TOPCOAT INDICATED.

CARBOLINE: NO 893
CORONADO: POLYAMIDE EPOXY 111-111
PORTER: "M.C.R. HIGH BUILD EPOXY" NO 4500
SHERWIN-WILLIAMS: "RECOATABLE EPOXY PRIMER", B67 SERIES
TNEMEC: SERIES 66 "HI-BUILD EPOXOLINE"

C. TOPCOAT: POLYURETHANE. PROVIDE FACTORY-FORMULATED POLYURETHANE. MATERIAL SHALL BE COMPATIBLE WITH THE INTERMEDIATE COAT INDICATED. SHEEN SHALL BE GLOSS.

CARBOLINE: 134 HS
CORONADO: SUPERTHANE, 827 SERIES
PORTER: "HYTHANE SUPER" NO. 8600
SHERWIN-WILLIAMS: "HIGH SOLIDS POLYURETHANE", B65 SERIES
TNEMEC: SERIES 75, "ENDURA-SHIELD" HIGH BUILD POLYURETHANE

D. COLOR OF TOPCOAT: AS SPECIFIED ON DRAWINGS.

PART 3: EXECUTION

3.1 EXAMINATION

A. EXAMINE: SUBSTRATE SURFACES TO RECEIVE SPECIAL COATINGS SYSTEM. STARTING WORK WITHIN A PARTICULAR AREA WILL BE CONSTRUED AS APPLICATOR'S ACCEPTANCE OF SURFACE CONDITIONS.

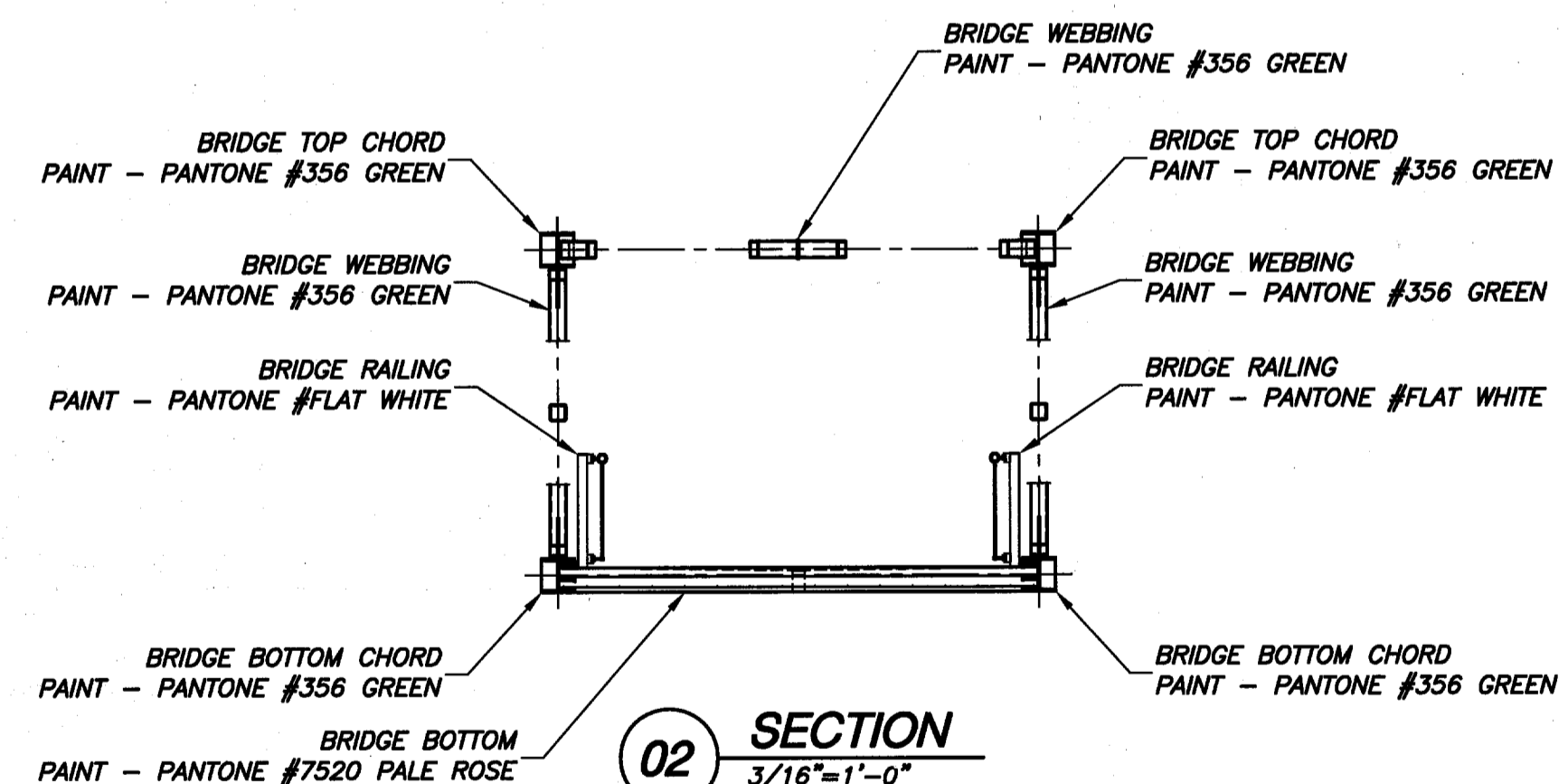
3.2 PREPARATION

A. REMOVE GREASE AND OIL BY SOLVENT CLEANING AS RECOMMENDED BY THE COATING MANUFACTURER AND IN ACCORDANCE WITH THE SSPC SP1.

B. SURFACES SHALL RECEIVE A COMMERCIAL BLAST CLEANING AS RECOMMENDED BY THE COATING SYSTEM MANUFACTURER AND IN ACCORDANCE WITH THE REQUIREMENTS OF SSPC SPECIFICATION SSPC SP6 AND SSPC -SP-COM.

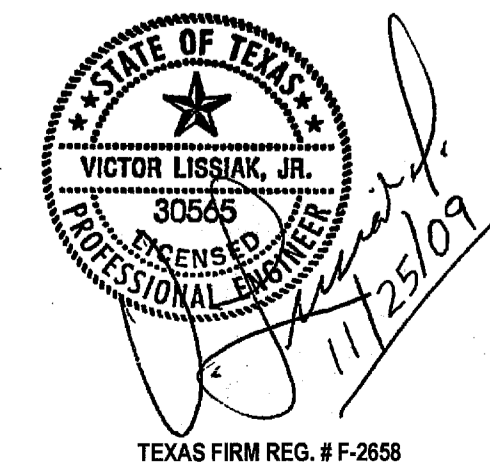
3.3 PROTECTION

A. PROTECT WORK OF OTHER TRADES, WHETHER TO BE COATED OR NOT, AGAINST DAMAGE FROM COATING. CORRECT DAMAGE BY CLEANING, REPAIRING, REPLACING AND RE-COATING.



02 SECTION
3/16"=1'-0"

PANTONE #356 GREEN:	PANTONE #7520 PALE ROSE:
C: 83	C: 7
M: 32	M: 25
Y: 79	Y: 22
K: 18	K: 0
R: 42	R: 234
G: 117	G: 195
B: 81	B: 184



PRELIMINARY-FOR REVIEW ONLY		NO.	REVISION	BY	DATE
					01/25/09
TOWN OF ADDISON DALLAS COUNTY, TEXAS					
VITRUVIAN PARK BRIDGES SOUTHERN PEDESTRIAN					
PAINT SCHEME					
VIEWTECH, INC.		4205 Beltway Dr. - Addison, Texas 75001			
Structural Engineers		(972) 661-8187 Fax (972) 661-8172			
PROJECT	DESIGN	DRAWN	DATE	FILE	SHEET
2007.144	VL	NERF	NOV. 25 2009	-	SB406

TEXAS FIRM REG. # F-2658