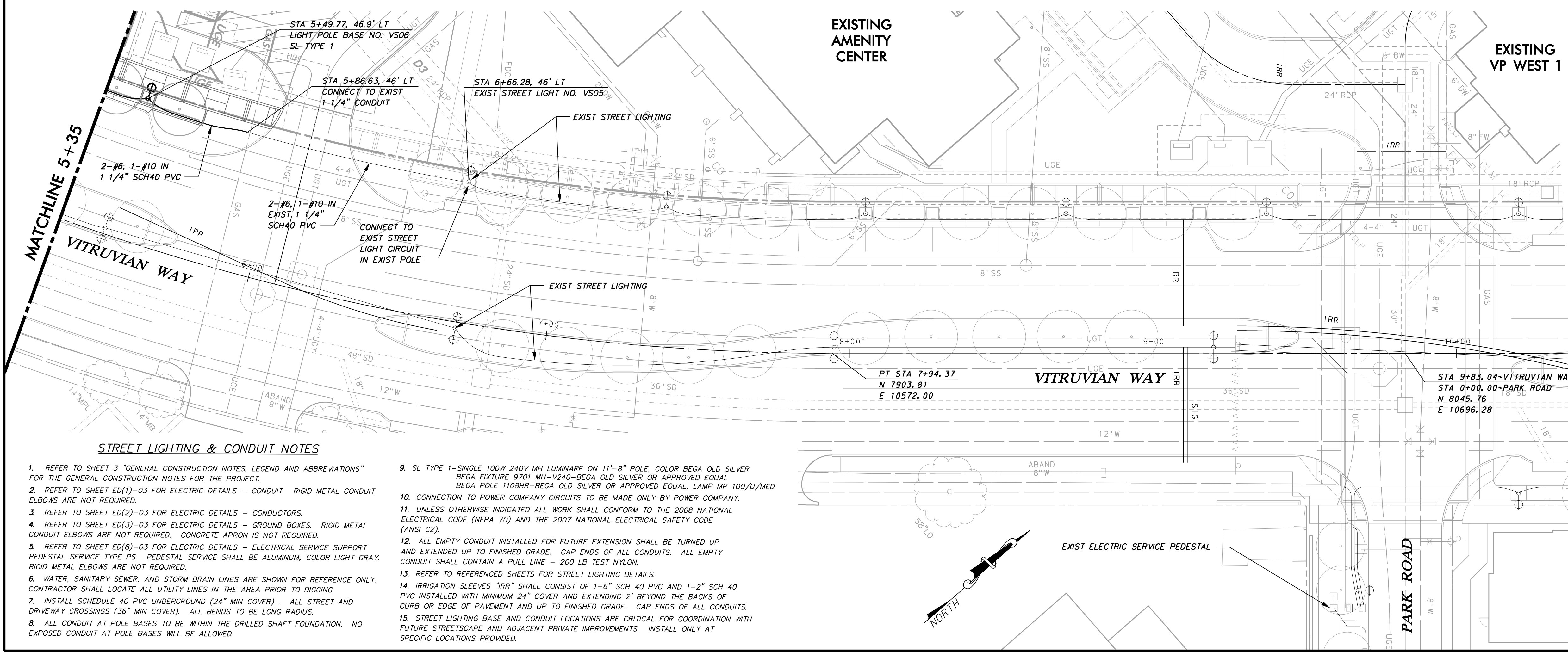
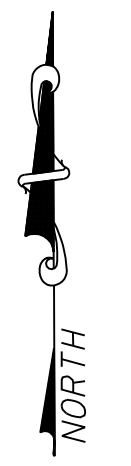


LEGEND

- PULL BOX (GROUND BOX)
- PVC CONDUIT (LIGHTING)
- TRANSFORMER ON PAD
- STREET LIGHT - TYPE 1
- STREET LIGHT - FUTURE TYPE 1
- * PROVIDED BY POWER COMPANY

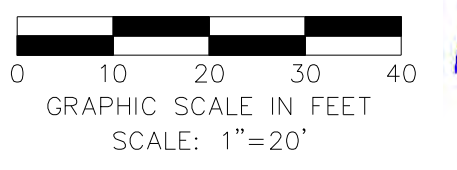


WARNING

CONTRACTOR IS TO CONTACT TEXAS ONE-CALL SYSTEM (1-800-245-4545) OR OTHER UTILITY LOCATING SERVICES AT LEAST 48 HOURS PRIOR TO CONSTRUCTION ACTIVITIES. ICON CONSULTING ENGINEERS, INC. IS NOT RESPONSIBLE FOR KNOWING ALL EXISTING UTILITIES IN THE PROJECT AREA NOR FOR DEPICTING THE EXACT LOCATIONS OF UTILITIES ON THESE DRAWINGS.

BM #1 REF. ELEVATION = 547.84
 SQUARE CUT IN TOP OF CURB, NORTH MEDIAN END NOSE,
 AT INTERSECTION OF VITRUVIAN WAY AND MARSH LANE.

BM #2 REF. ELEVATION = 559.47
 SQUARE CUT IN TOP OF CURB, SOUTH MEDIAN END
 NOSE, MARSH LANE 1127' NORTH OF VITRUVIAN WAY.



NO.	REVISION	BY	DATE

icon Consulting Engineers, Inc. 2840 W. Southlake Blvd., Suite 110
 Civil Engineers - Designers - Planners Southlake, TX 76092 (817) 552-6210
 Engineering Firm Registration Number F-9007

VW2 STREETSCAPE IMPROVEMENTS
 VP PUBLIC INFRASTRUCTURE - PHASE 5, BLOCK 200B
 TOWN OF ADDISON, TEXAS
STREET LIGHTING & CONDUIT PLAN
 VITRUVIAN WAY STA 6+30.83 TO 13+70.78

DESIGN	DRAWN	DATE	SCALE	NOTES	Sheet No.
ICE	ICE	NOV 17, 2020	AS NOTED		11

VW2 STREETSCAPE - VP PUBLIC INFRASTRUCTURE - PHASE 5, BLOCK 200B - PROJECT NO. 5029-06

STREET LIGHTING & CONDUIT NOTES

1. REFER TO SHEET 3 "GENERAL CONSTRUCTION NOTES, LEGEND AND ABBREVIATIONS" FOR THE GENERAL CONSTRUCTION NOTES FOR THE PROJECT.
2. REFER TO SHEET ED(1)-03 FOR ELECTRIC DETAILS - CONDUIT. RIGID METAL CONDUIT ELBOWS ARE NOT REQUIRED.
3. REFER TO SHEET ED(2)-03 FOR ELECTRIC DETAILS - CONDUCTORS.
4. REFER TO SHEET ED(3)-03 FOR ELECTRIC DETAILS - GROUND BOXES. RIGID METAL CONDUIT ELBOWS ARE NOT REQUIRED. CONCRETE APRON IS NOT REQUIRED.
5. REFER TO SHEET ED(8)-03 FOR ELECTRIC DETAILS - ELECTRICAL SERVICE SUPPORT PEDESTAL SERVICE TYPE PS. PEDESTAL SERVICE SHALL BE ALUMINUM, COLOR LIGHT GRAY. RIGID METAL ELBOWS ARE NOT REQUIRED.
6. WATER, SANITARY SEWER, AND STORM DRAIN LINES ARE SHOWN FOR REFERENCE ONLY. CONTRACTOR SHALL LOCATE ALL UTILITY LINES IN THE AREA PRIOR TO DIGGING.
7. INSTALL SCHEDULE 40 PVC UNDERGROUND (24" MIN COVER). ALL STREET AND DRIVEWAY CROSSINGS (36" MIN COVER). ALL BENDS TO BE LONG RADIUS.
8. ALL CONDUIT AT POLE BASES TO BE WITHIN THE DRILLED SHAFT FOUNDATION. NO EXPOSED CONDUIT AT POLE BASES WILL BE ALLOWED.
9. SL TYPE 1-SINGLE 100W 240V MH LUMINAIRE ON 11'-8" POLE, COLOR BEGA OLD SILVER BEGA FIXTURE 9701 MH-V240-BEGA OLD SILVER OR APPROVED EQUAL BEGA POLE 1108HR-BEGA OLD SILVER OR APPROVED EQUAL, LAMP MP 100/U/ME
10. CONNECTION TO POWER COMPANY CIRCUITS TO BE MADE ONLY BY POWER COMPANY.
11. UNLESS OTHERWISE INDICATED ALL WORK SHALL CONFORM TO THE 2008 NATIONAL ELECTRICAL CODE (NFPA 70) AND THE 2007 NATIONAL ELECTRICAL SAFETY CODE (ANSI C2).
12. ALL EMPTY CONDUIT INSTALLED FOR FUTURE EXTENSION SHALL BE TURNED UP AND EXTENDED TO FINISHED GRADE. CAP ENDS OF ALL CONDUITS. ALL EMPTY CONDUIT SHALL CONTAIN A PULL LINE - 200 LB TEST NYLON.
13. REFER TO REFERENCED SHEETS FOR STREET LIGHTING DETAILS.
14. IRRIGATION SLEEVES "IRR" SHALL CONSIST OF 1-6" SCH 40 PVC AND 1-2" SCH 40 PVC INSTALLED WITH MINIMUM 24" COVER AND EXTENDING 2' BEYOND THE BACKS OF CURB OR EDGE OF PAVEMENT AND UP TO FINISHED GRADE. CAP ENDS OF ALL CONDUITS.
15. STREET LIGHTING BASE AND CONDUIT LOCATIONS ARE CRITICAL FOR COORDINATION WITH FUTURE STREETSCAPE AND ADJACENT PRIVATE IMPROVEMENTS. INSTALL ONLY AT SPECIFIC LOCATIONS PROVIDED.