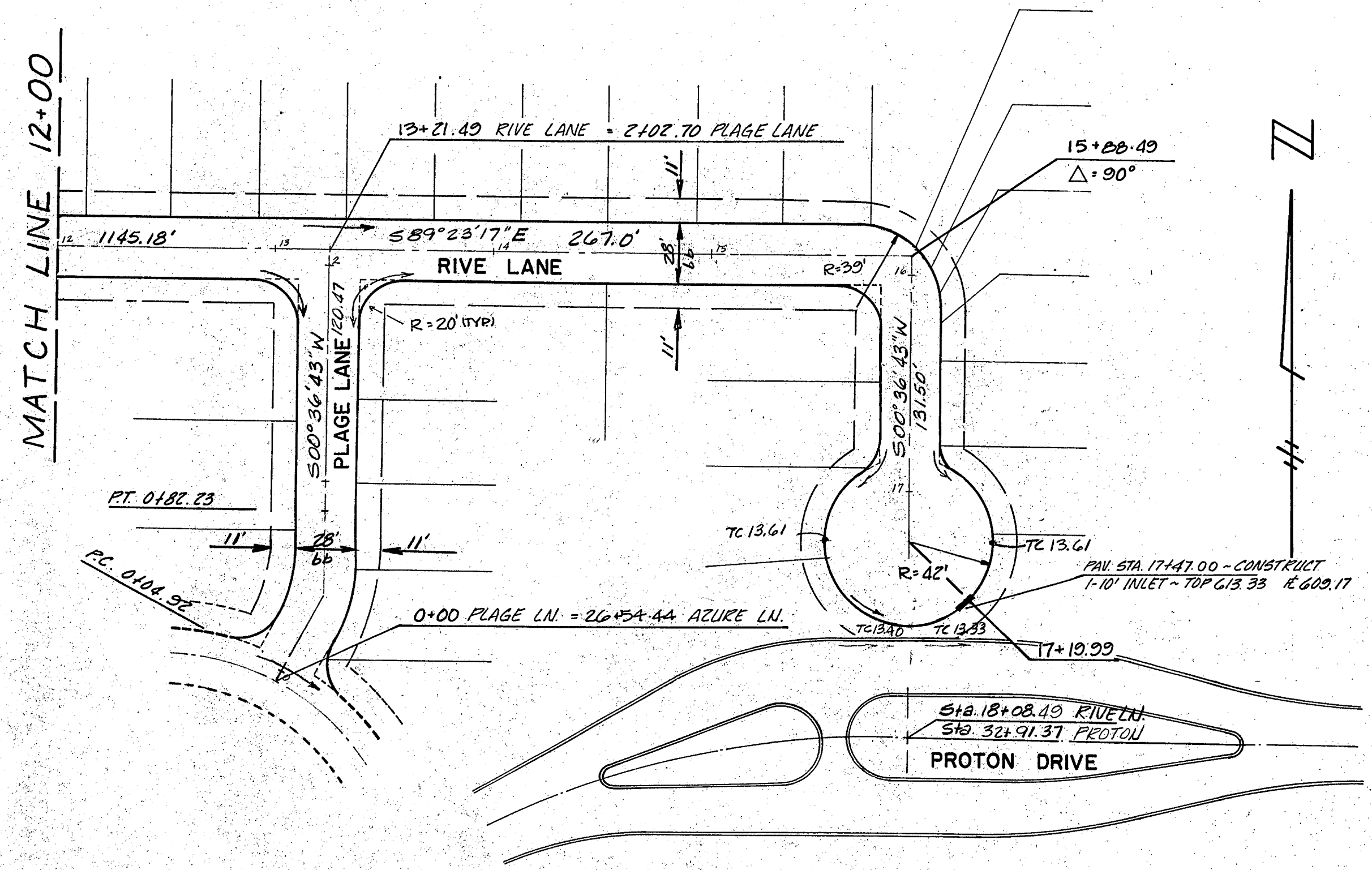
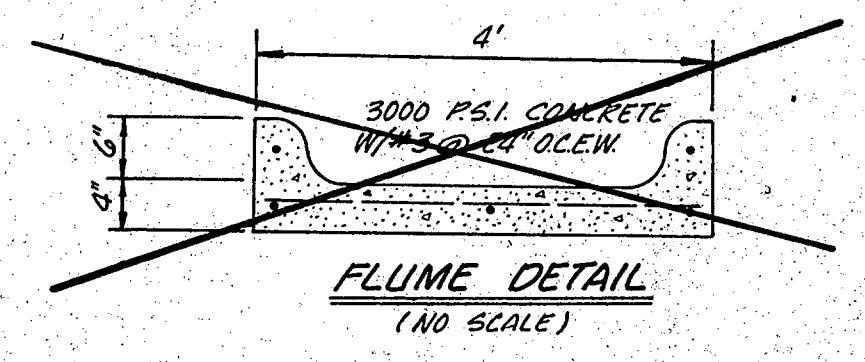


PLAN
 NOTE BOOK
 ALIGNMENT SHEET
 NO. 12



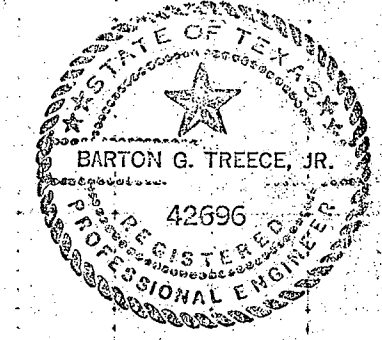
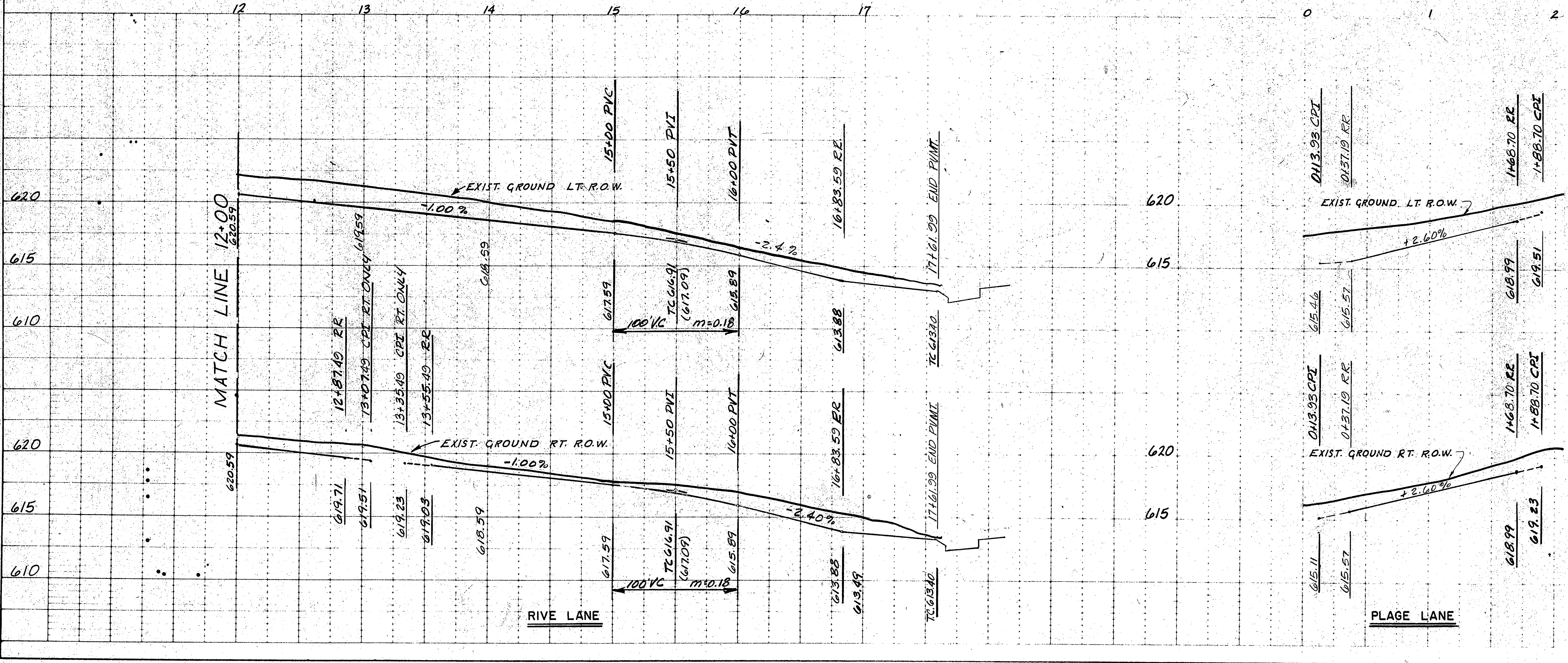
- GENERAL NOTES
- All material and workmanship shall conform to the City of Addison Standards and Specifications and to the Contract Documents.
 - All areas to receive fill shall be scarified to a depth of 6 inches and compacted to a density of 95% Standard Proctor Density. All fill shall be placed in horizontal layers not exceeding 8 inches (loose depth) and compacted to a density of 95% Standard Proctor with the moisture content within 4% of the optimum.
 - Plasticity Index (P.I.) will be determined for all streets and will be noted on paving plans. All streets will be lime stabilized if P.I. is equal to or greater than 15.
 - It will be the responsibility of the contractor to protect all utilities in the construction of this project. All manholes, cleanouts, valve boxes, fire hydrants, etc., must be adjusted to proper line and grade by the contractor prior to and after the placing of permanent paving. Utilities must be maintained to proper line and grade during the construction of the paving for this development.
 - The paving contractor shall be responsible for the adjustment of water and sanitary sewer appurtenances in accordance with the details shown on City of Dallas File 2510-8.
 - All street curb radii 20' unless otherwise indicated on the plans.
 - All lots are to be filled and/or graded to conform to street and alley grades.
 - All drainage structures shall be 3000 PSI concrete at 28 days and conform to THD Stds.
 - A minimum of Class III reinforced concrete pipe shall be used on all storm sewer systems. Ram neck shall be used on all pipe joints unless prior approval received.
 - Bedding for storm sewer shall be per City of Addison specifications.
 - The location of all utilities are taken from existing public records. The exact location must be determined by the Contractor. It is the duty of the Contractor to ascertain whether any additional facilities, other than those on the plans may be present.

- REVISIONS
- △ GENERAL REVISIONS AS PER CITY OF ADDISON - 11/13/81
 - △ STREET RADIUS REVISED - 11/13/81
 - △ STREET NAME CHANGES - 11/20/81



- BENCH MARKS
- Cut top of conc. footing at Northwest cor. Tower #12N-3W-T288
ELEV. 605.20
 - Cut top of conc. footing at Northwest cor. Tower #12N-3W-T290
located at the angle point of the line
ELEV. 613.16
 - Cut top of conc. footing at Southwest cor. Tower #12N-3W-T291
ELEV. 619.46

PROFILE
 NOTE BOOK
 GRADE SHEET
 NO. 13



PAVING PLAN					
LES LACS GARDEN HOMES					
RIVE LANE & PLAGE LANE					
CITY OF ADDISON, TEXAS					
HILL & CO. ENGINEERING SCIENCES INC.					
DESIGN	DRAWN	DATE	SCALE	NOTES	FILE NO
HILL & CO		AUG 81	HOR. 1"=50' VERT. 1"=5'	RLG	