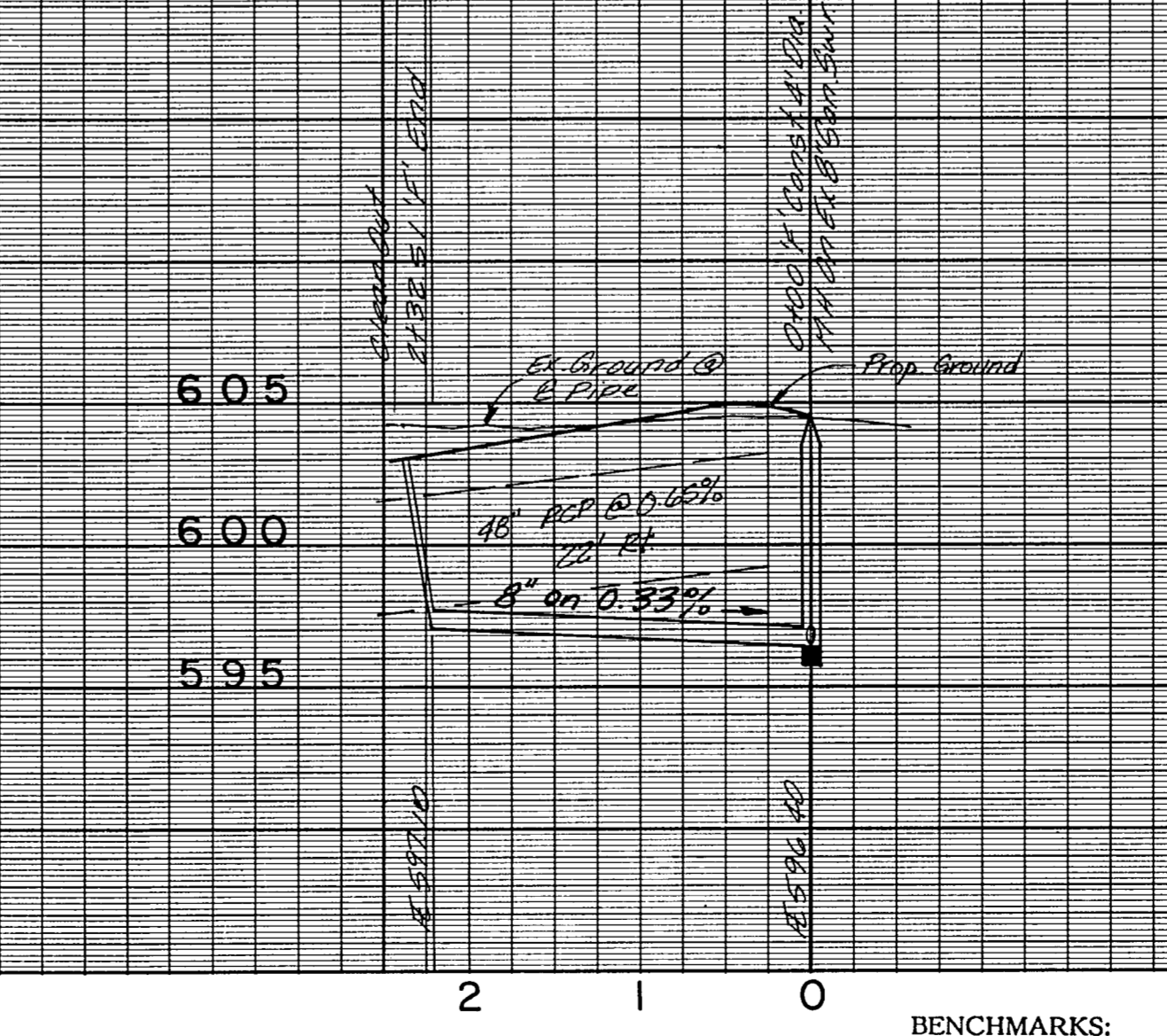
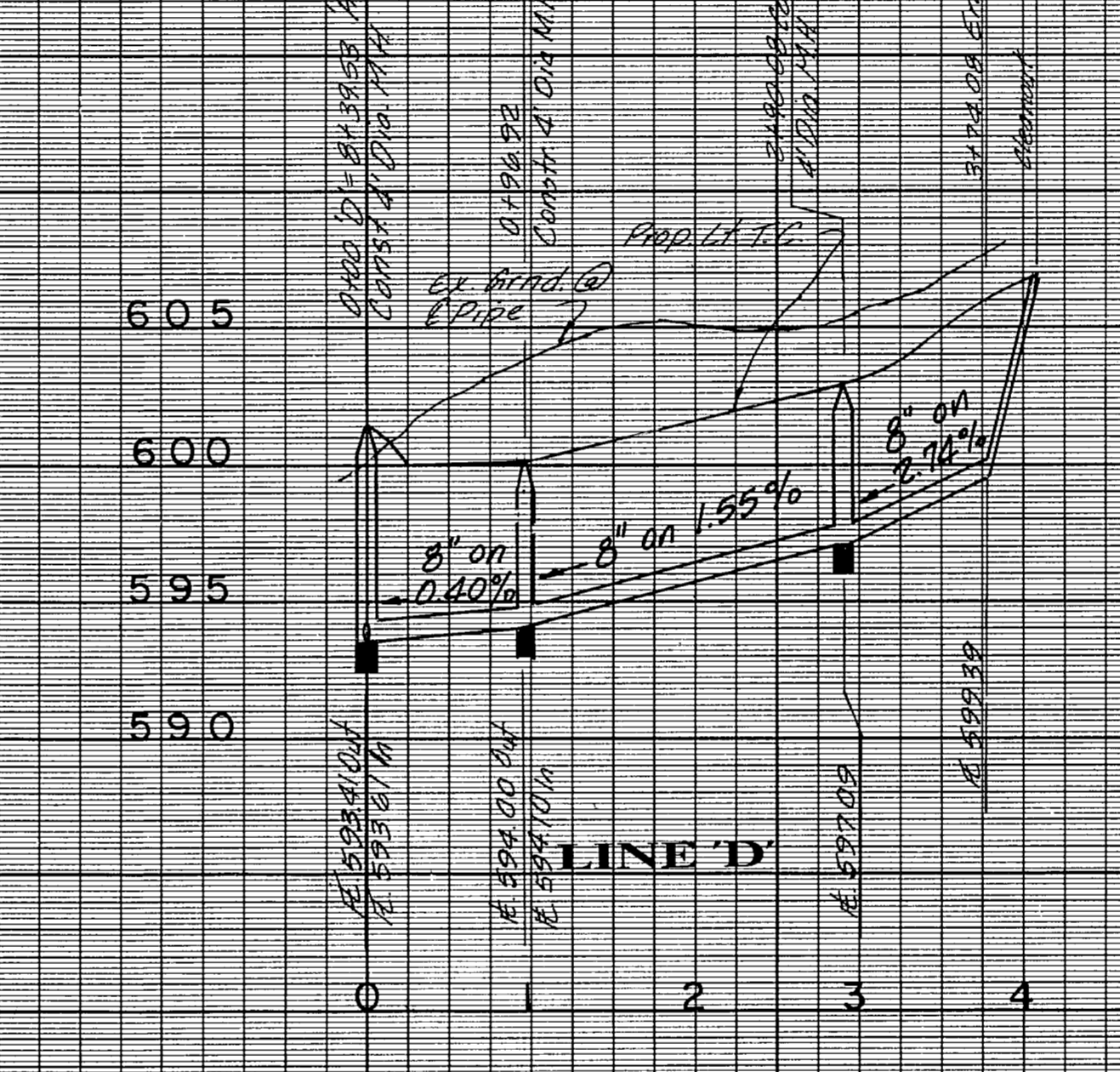
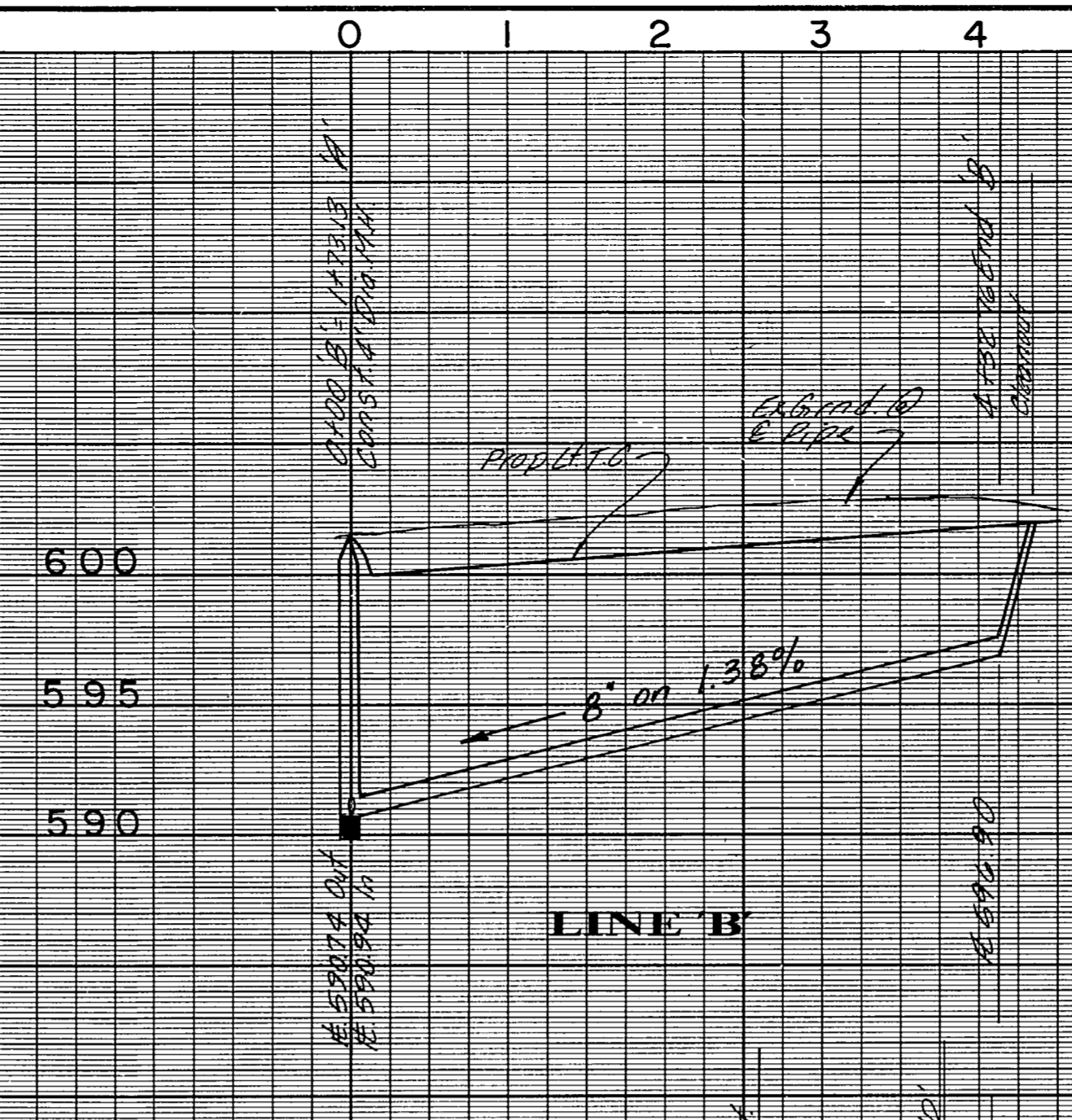
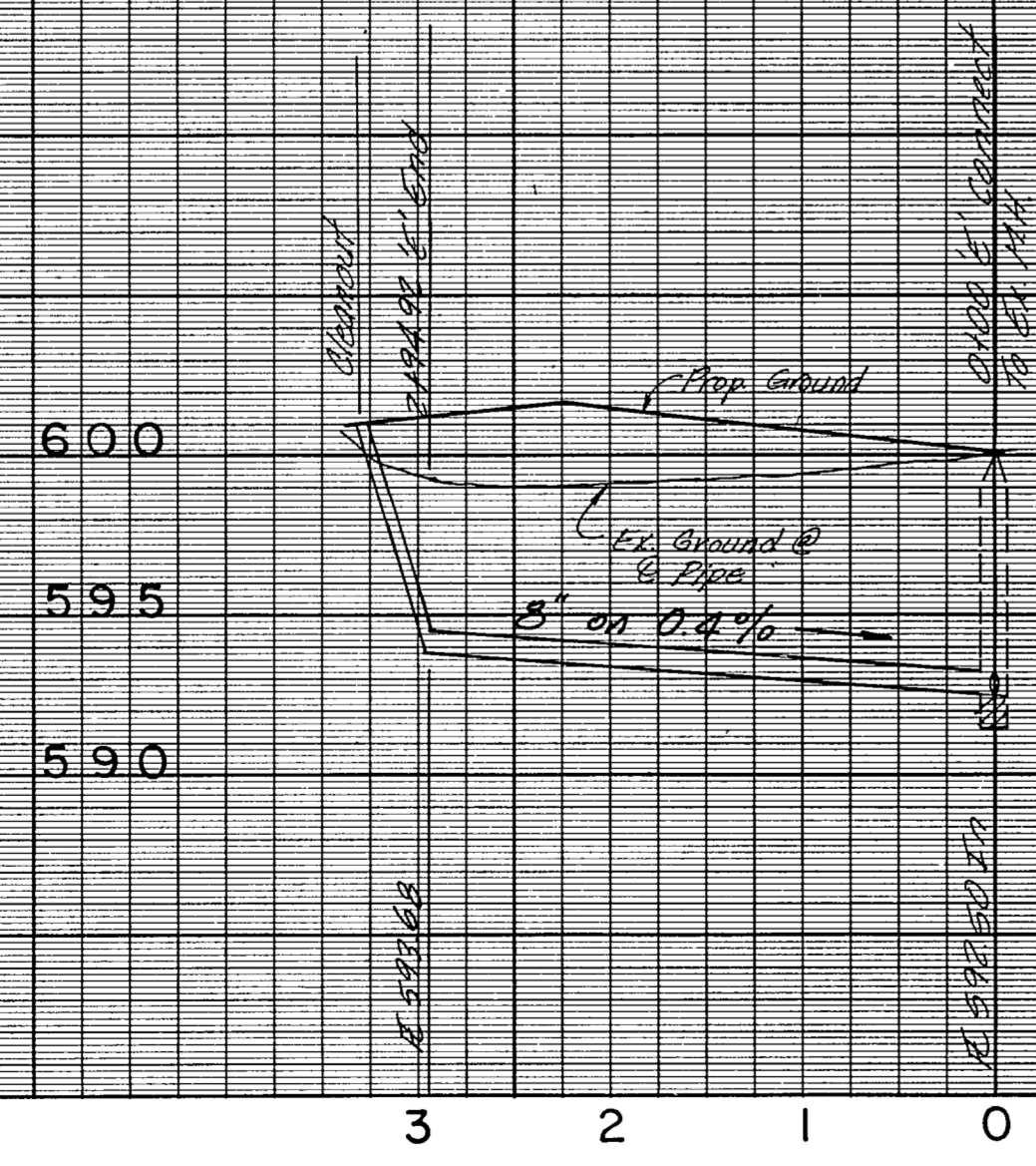
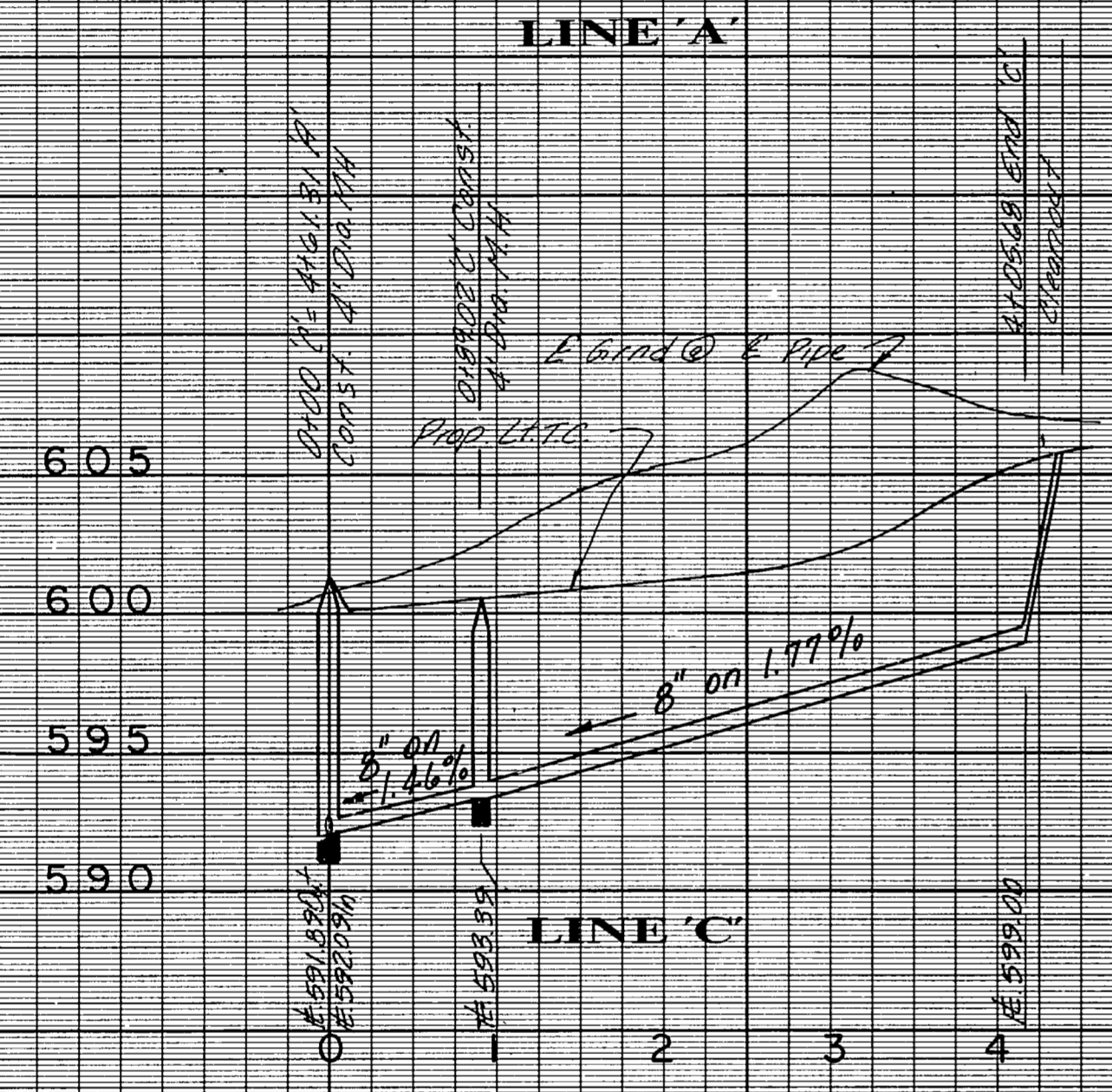
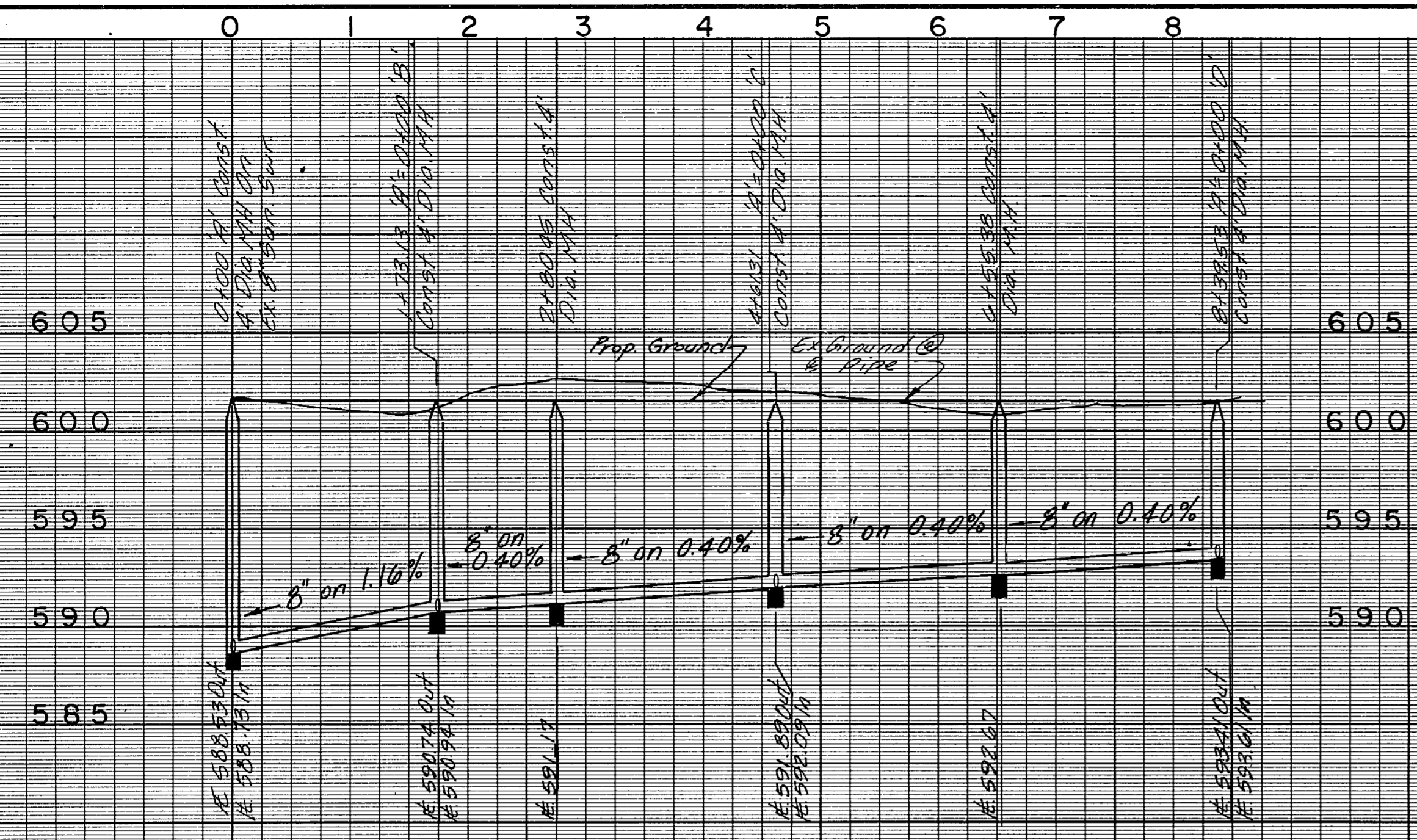
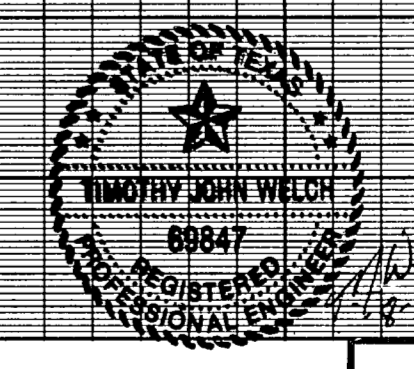


No.	DATE	REVISION	DRAWN	CHECKED
1	11-20-91	Revised Lines A, B, C & D	B.H.	T.N.C.
2	11-21-91	Revised Lines A, B, C & D	B.H.	T.N.C.



AS-BUILTS
 I CERTIFY THIS PROJECT WAS CONSTRUCTED IN GENERAL CONFORMANCE WITH THESE CONSTRUCTION PLANS AND WILL FUNCTION AS DESIGNED.



BENCHMARKS:
 Square cut on 14" recessed inlet on north curb line at the intersection of Beltway Drive and Proton Drive. Elev. 596.53
 Square cut on top of inlet at northwest corner of Proton Drive and Les Lacs Avenue. Elev. 607.35
 "X" cut in centerline of Les Lacs Avenue, 250' ± west of Proton Drive. Elev. 601.88

SANITARY SEWER PROFILE
WATERFORD PARK I

THE NELSON CORPORATION
 LAND PLANNING • ENGINEERING • SURVEYING
 5999 SUMMERSIDE DRIVE • SUITE 202 • DALLAS, TEXAS 75252 • (214) 380-2405

DESIGN	DRAWN	DATE	SCALE	NOTES	FILE	NO.
NRC	NRC	AUGUST 1991	1"=100' H 1/4" = 60' V	TNC	90025-5	WS-2